



IMPACT PROTECTION SYSTEMS



www.unitech-ikk.com
www.ikkgroup.com



UNITECH
For Building and Construction Materials

IMPACT PROTECTION SYSTEMS



Impact Protection Systems

Index

About UNITECH	4
ABOUT UGAURD	11
Uguard Range of Products	13
Contact Information	24



**ABOUT
UNITECH**

Unitech Introduction

Unitech is a Saudi based Multinational Company providing building and construction solutions that is empowering the region's construction industry for the past 40+ years. We have been successfully providing solutions through mastering our main business activities: Design, Manufacture and Trade.



Design:

Provide Design & Engineering Solution to the construction sector, complying with international & local standards.



Manufacture:

Operating with Global Standards, we are widely recognized for our advanced light steel solutions and Hot-Dip Galvanization Facility.



Trade:

We are one of the region's largest Importer/Exporter of Building & Construction Materials.

Unitech is an **ISO QMS 9001:2015** certified company and is a member of the US Green Building Council. Our experienced teams and operations are present across the Middle-East North Africa regions (MENA) and Pakistan, giving us an extensive regional network that benefits our clients and partners. We are also present in Europe via our design and engineering office in Stuttgart.

For more information, please visit: www.unitech-ikk.com

Mission & Vision

Mission

UNITECH is committed to transforming the construction and building sector by equipping engineers with advanced solutions and expert support at every project stage. As a leading industry provider, we empower our team to deliver exceptional service that consistently exceeds expectations. By fostering a cohesive and forward-focused culture, we attract and retain top talent, driving our mission forward. Our innovative, customer-centric products set new industry benchmarks and pave the way for future progress.

Vision

To be the Customer's First Choice...

Our Strategy

Unitech's strategy continues to focus on accelerating its business throughout the region, to service the construction sector via superior products & solutions, backed up by a group of highly experienced people in the field. Unitech also aims to enhance its geographical presence in its areas of interest and where opportunities exist.

We combine a deep understanding of building and construction materials markets with a successful history of upgrading our products and developing our processes.

We have the qualified employees, the know-how and the products to service major construction projects, medium sized to mega projects taking in care our positive contribution to our societies.

We thrive towards excellence by acknowledging:



Customer Satisfaction



Partner and Supplier Relations



Employee Retention



Positive Influence on Society and Environment

Our Employees

We are a company that prides itself on its 'family' culture and we seek out high-caliber people. We are a company that has, at its core, a team philosophy that is clearly apparent each and every day - there is a real sense of being there for one another.

We believe in nurturing the skills of our team members and providing growing levels of responsibility. Our people bring unique skills, energy, expertise, experience and perspectives to our workforce.

Unitech's family of employees consists of experienced, well-motivated and dedicated team of engineers, technicians, sales executives and management staff. This team is committed to serve our customers, with the best solutions available in the market.

Our Journey

40+ Years of Excellence

Since 1979, having been set to become an independent company under the framework developed by Sheikh Isam Kabbani, Unitech started its journey of success with confidence and enthusiasm, hard work and care to detail and a commitment to become the best within its industry.

Its dedicated people could only imagine what the future could bring to this newly established entity. Unitech's journey of success has been marked with outstanding achievements and superior accomplishments. Year by year, Unitech has been acknowledged as the "First Choice for Building & Construction Material" by major construction consultants in the region, governmental authorities, well-known contracting and project development corporations.

We have obtained invaluable knowledge about the construction industry in general, providing specialized solutions to construction projects throughout MENA region. From a couple of outlets in Saudi Arabia, Unitech today is present all over the Kingdom and in several countries throughout the region providing its products and solution to various locations worldwide.



Est. 1979

THE BEGINNING

Unitech was established in the Western Region of KSA as a Sales Company selling basic construction material.

During the same year, another branch was established in the heart of the kingdoms capital, Riyadh.



1980 to 1989

AGE OF GREAT RISK

Unitech Dammam was open for business in the oil-rich eastern coast of Saudi Arabia.

Within these 10 years the idea of in-house manufacturing facility was born and Specialized Factory for Steel Products (SFSP) was established in Riyadh.



1990 to 1999

AGE OF GROWTH

Branches of Unitech were established in Makkah, Madina, Khamis Mushayt and Jubail.

The need to increase its range of products and the necessity to have production lines for mass production lead to the decision to move the SFSP Factory from Riyadh to Jeddah.

Pioneering Construction Since 1979

We are constantly evolving in order to become more flexible in our operations, more sustainable in our societies, and more innovative in conducting our business.

By delivering superior products tailored to the specific construction needs, ambitious solutions, and an outstanding customer service, we serve today's needs through developing tomorrow's markets.

Helping construction projects experience success is what fueled its days. Unitech is keen to continue offering superior products, a wide spectrum of solutions, governed by our top-notch management style.

Such aspirations require trust in our responsibilities. Our Responsibilities for the future and with this in mind we continue to target excellence with committed efforts.



2000 to 2015

AGE OF CONSTRUCTION BOOM

Qassim, Hofuf and Yanbu Branches were inaugurated in KSA and branches outside KSA were established in UAE, Egypt, Lebanon, Oman, Jordan and Germany in order to facilitate the construction boom in the Middle East.

During this period SFSP state of the art facilities were launched in DIC UAE and Unitech thrived, marking some of the best years in business.



2016 to 2019

AGE OF GREAT CHANGE

This period, marked the age of great change in order to align with the economic shift in the GCC and the world in general.

Company wide right sizing initiatives were taken especially in KSA to align with the kingdom's ambitious vision 2030 and during this period the upgraded SFSP state of the art facilities were launched in JIC 3 KSA.



2020 & Beyond

NEW FRONTIER

This period marks the expansion of Unitech into the South and Central Asian territories. We aim to cater these markets and play an active role in these countries development.

During 2020, Unitech Pakistan was officially inaugurated and marked the entrance of Unitech into Asian Market.

Our Manufacturing Arm

SFSP

SFSP is a leading manufacturer and fabricator of light steel construction products in the region, servicing the construction sector through its state of the art facilities which are spread all over the MENA region. Products of SFSP are manufactured from quality raw material according to the relevant international standards to meet all kinds of construction projects requirements, such as MEP, façade, blockwork & waste management systems.

Commitment to Quality

Our commitment to quality is clearly revealed in the way we do our business; our processes, our close interaction with our clients as well as the strict product inspection procedures. To achieve this, we have implemented quality systems & processes that are continually being improved to satisfy our customer's needs.

Product Development

Product development process is substantial to the success of our business. We leverage all resources to provide up-to-date reliable products, environmentally friendly, durable to withstand the toughest weather conditions. Our engineers are constantly testing the products, seeking to present a combination of performance and quality across all our product ranges.

For more information, please visit:
www.sfsp-ikk.com

Value Chain

Our value chain starts up with the quality of the raw materials and ends up in client satisfaction. Our business practices backed up by all technologically essential business elements are supported by an efficient logistics, warehousing and delivery system that maintains a valuable supply chain for products.

The value chain is integrated in our business module, giving us strength and preserving our good reputation gained through the past 4 decades.

Engineering Specialty

Our products development engineers integrate their vast knowledge to provide the perfect solution to projects within the required specifications and time-frame.

The products development department maintains highly skilled calibers with a dedication towards efficient and reliable solutions even in the most complicated cases where delicacy and skillful approaches are indispensable.

Design and Product Safety

Our design and engineering office in Stuttgart ensures our products comply with relevant European and international standards of fabrication, taking into attention the safety factors which govern the public safety of projects.

Sustainability and Responsibility

We are constantly working hard to reduce our environmental footprints while maintaining the high quality and safety standards. We have set our targets to become three times more efficient in the next 10 years. Our responsibility towards our stakeholders is valued through our positive contributions towards our colleagues, our business partners and our communities as well.

Our Design Office



UNITECH DEUTSCHLAND is a "Design & Engineering" Office. Unitech Germany support Unitech & SFSP operations through well-informed cadre of engineers. They help our customers from conception to the completion by delivering design, engineering and project management services.

Thanks to our multidisciplinary team in Unitech Germany and their expertise, we assist you in your ambition to develop your innovation, your engineering and your organization. Our goal is to serve our clients through these elements:

- Excellent in engineering ideas and solutions
- High quality in performance
- Firmness on meeting deadlines

**ABOUT
UGUARD**

U-Guard provides the most suitable way to protect your facilities from damage caused by traffic. Through a large selection of heavy duty items designed to suit most applications, U-Guard offers a set of material, each serves to provide the required shield to the facility. Natural rubber, EPDM, SBR, Vinyl, and Urethane compounds are the materials used in manufacturing the distinguished products of uguard.

Elastomeric Building Protectors

Applications

- Car Parks
- Warehousing and Distribution Areas
- Delivery & Dispatch Areas
- Manufacturing Areas
- Loading Docks
- Parking Garages
- Storage Areas
- Archways & Columns
- Hotel & Motel Parking Lots
- Truck & Bus Terminals
- Villas

Benefits

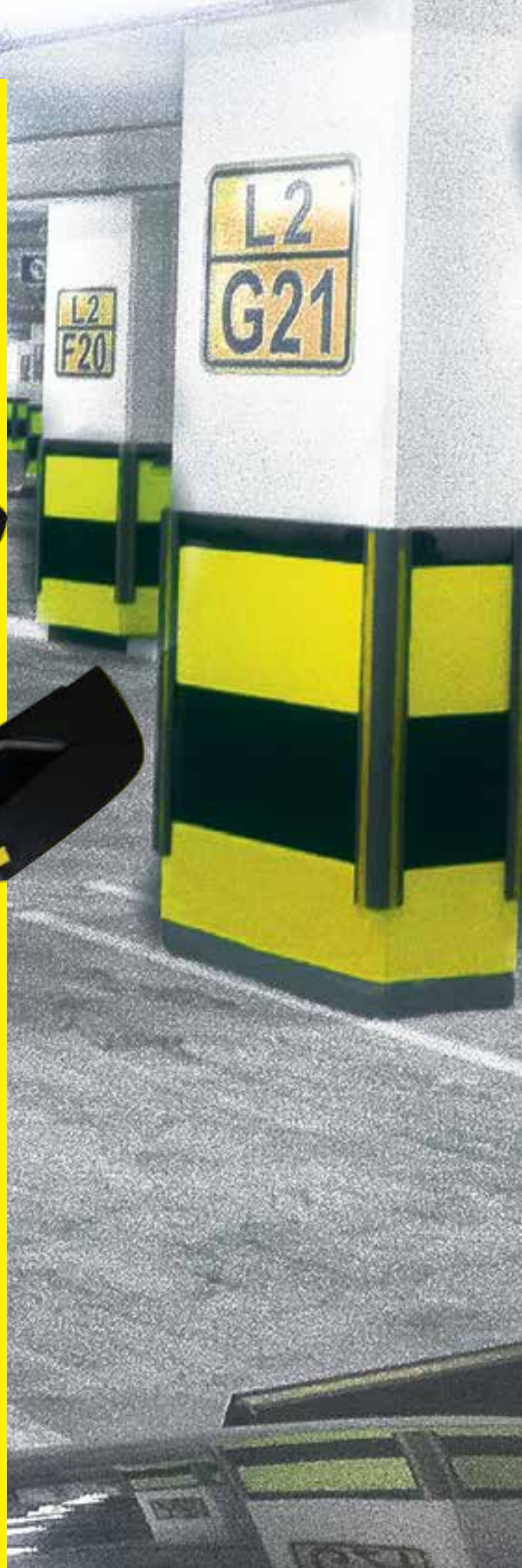
- Protection and preservation of the building
- Non Marking
- Aesthetic Design
- Minimizing maintenance cost
- Anti-stain
- Wide Temperature Range
- Ozone & UV Resistance
- Easy Fixing & Replacement Option

**THE IMPORTANCE
OF A SAFETY HELMET IS VIVID
as well as
the U GUARD
at your site !**



**UGUARD
RANGE OF PRODUCTS**

CORNER GUARDS



Corner Guards

Accidents hurt - safety does not.



Description

Corner Guards are made from High impact resistant material. They are designed to protect the edges of columns in structures. Corner Guards relieve the tension of chipped & broken corners of pillars / columns. They are mounted into the edges of, preferably all the 4 edges of square columns of basement parking as well as the edges of the walls in industrial premises. They are suitable for medium, and heavy traffic areas & also moving trolleys. Considered to be a perfect solution for chipped edges in car parks, hospitals, nursing homes, laboratories, hotel, schools, sports areas and a multitude of other commercial properties.

Materials

They are manufactured using high impact resistant SBR Rubber. They are also available in NEOPRENE and EPDM on request. Standard color is black. Designs are available with yellow strip. They are weather resistant, abrasion resistant, crack resistant and do not stain the vehicle.

SBR - Styrene - Butadiene Rubber

Good Abrasion Resistance

Good Aging Stability

Shore of Hardness [50 - 90]

Elongation [450 - 500 %]

Possible Temperature [-40 up to 100 C]

EPDM - Ethylene Propylene Diene Monomer [M-Class] Rubber

Shore of Hardness [40 - 90]

Tensile Failure Stress [25 M pa]

Possible Temperature [-50 up to 150 C]

Wing Sizes

65x65 mm ; 75x75 mm ; 90x90 mm ; 100x100 mm ; 120x120 mm

Standard Lengths

1 mtr and 1.2 mtr. Other lengths are available upon request.

Installation

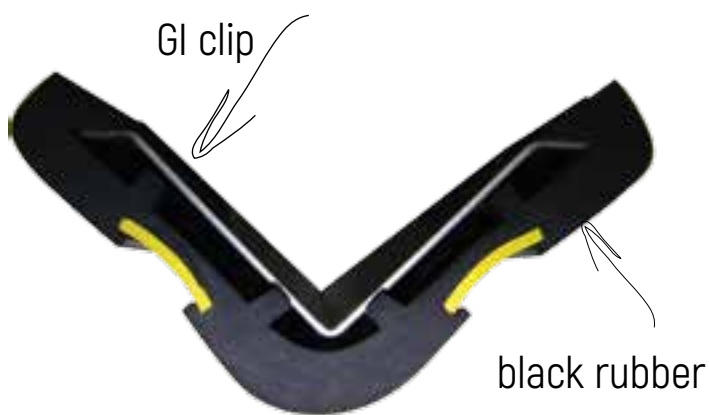
Clips normally come in GI (Pre Galvanized Steel), but can also be delivered in SS (Stainless Steel) and AL (Aluminum) upon request .

- 1- Clip to be fixed using 8 Screws M6 x 60 Nylon Wall plug
- 2- Rubber Corner Guard to be installed over the Metal Clip

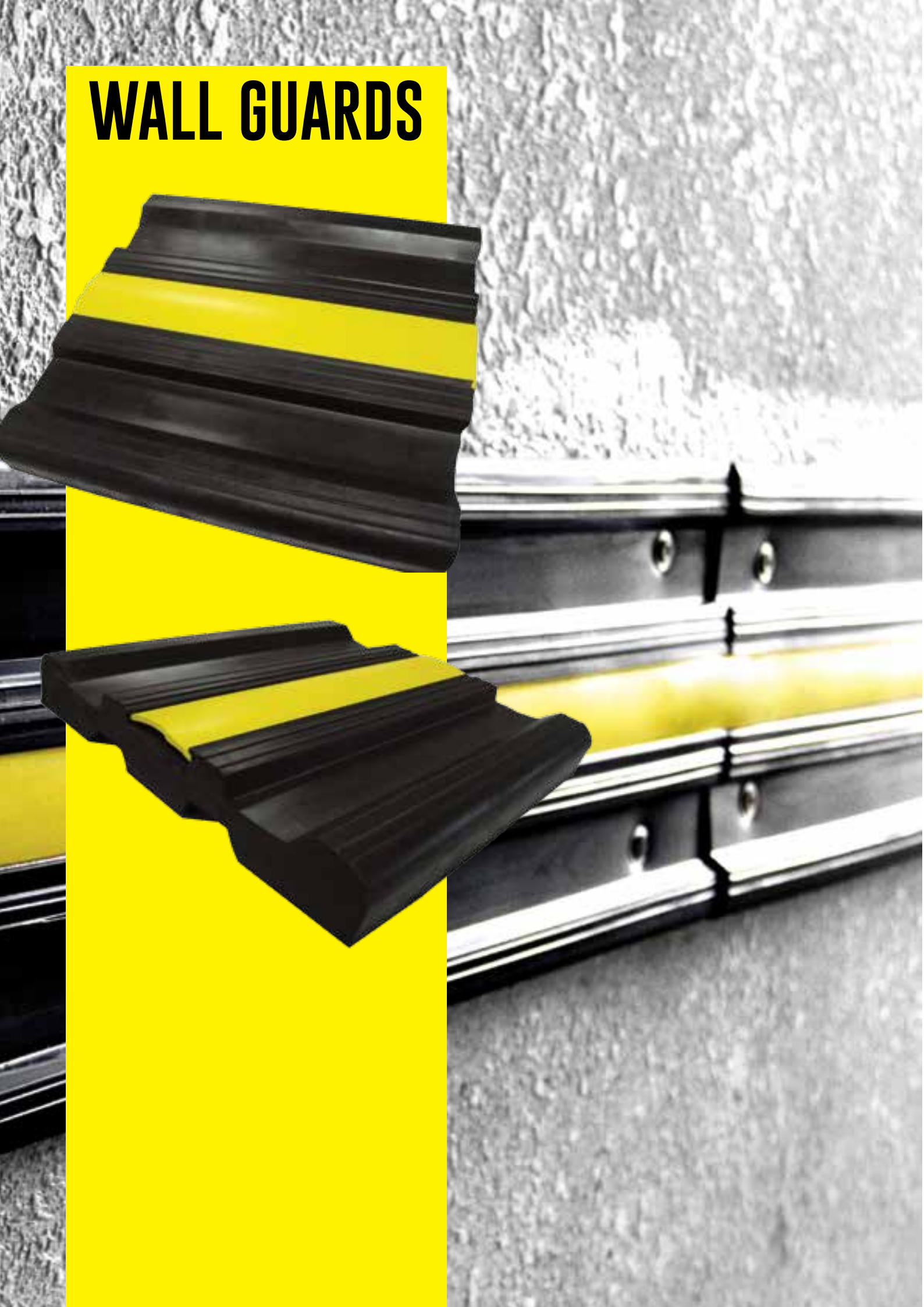
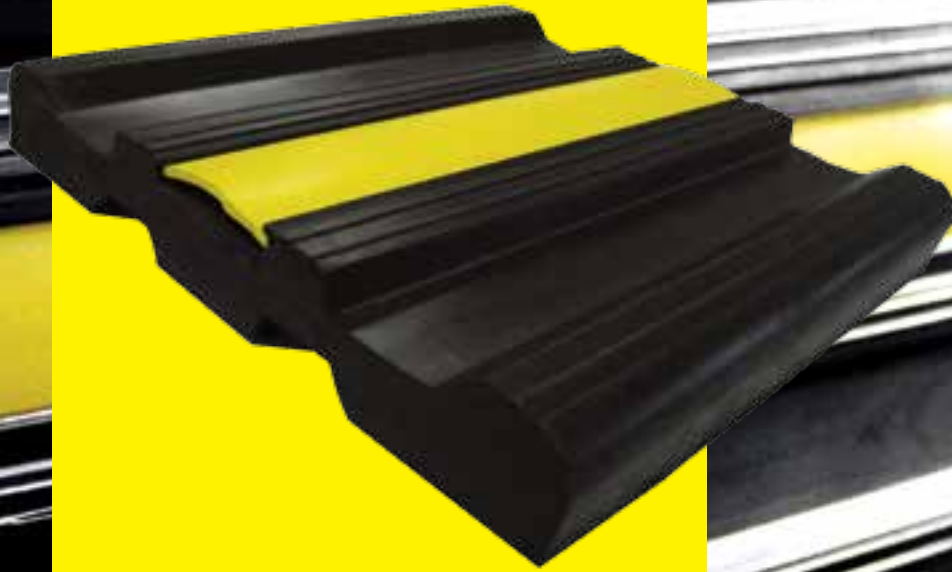


Black with yellow strip

Type	Wing Size (mm)
CG - BY1	65
CG - BY2	75
CG - BY3	90
CG - BY4	100
CG - BY5	120



WALL GUARDS



Wall Guards

Prepare and prevent, do not repair and repent.



Description

Wall Guards are designed to absorb, deflect and minimize the extent of wear, abrasion and impact from wheeled traffic such as trolleys, carts and vehicles. Wall guards are made of aluminum retainer and PVC or Rubber covers. Heavy duty rubber wall and circular profiles offer cost-effective protection for walls, circular columns in busy assembly and access areas. Wall guards are applicable by mechanical fixation or adhesive fixation to any substrate, including concrete, brickwork and block work, these robust and durable profiles can be used on both internal and external ramps by mitering on-site. It also be curved to accommodate surface variations.

Materials

Wall guards are applicable by mechanical fixation or adhesive fixation to any substrate. UV and ozone stabilizers for highly-resistant rubber/UV and ozone resistant rubber . They come black with a yellow strip.

Sizes

200 mm height x 25 mm width , 200 mm height x 50 mm width, 120 mm height x 30 mm width and other sizes upon request.

Standard Lengths

These products come in 2 mtr or 4 mtr Rolls.

Installation

They are installed to wall and column in vertical and horizontal position as per the requirement with the help of M8x80 mm size expansion bolts, at 50 cm distance from the other with washer and P.V.C. Fischer. Each 250mm.

SBR - Styrene - Butadiene Rubber

Good Abrasion Resistance

Good Aging Stability

Shore of Hardness [50 _ 90]

Elongation [450 _ 500 %]

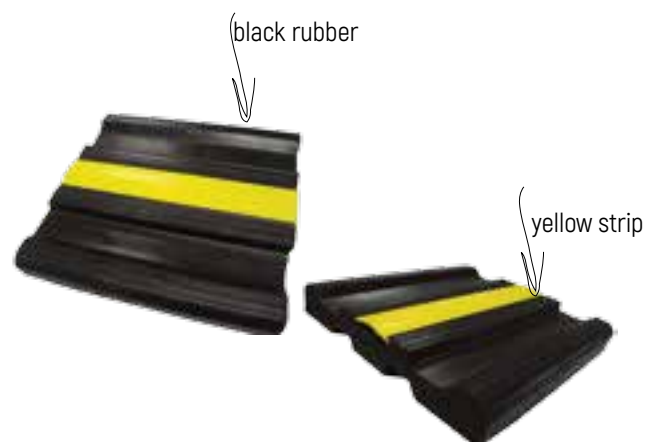
Possible Temperature [-40 up to 100 C]

Technical Table...Black

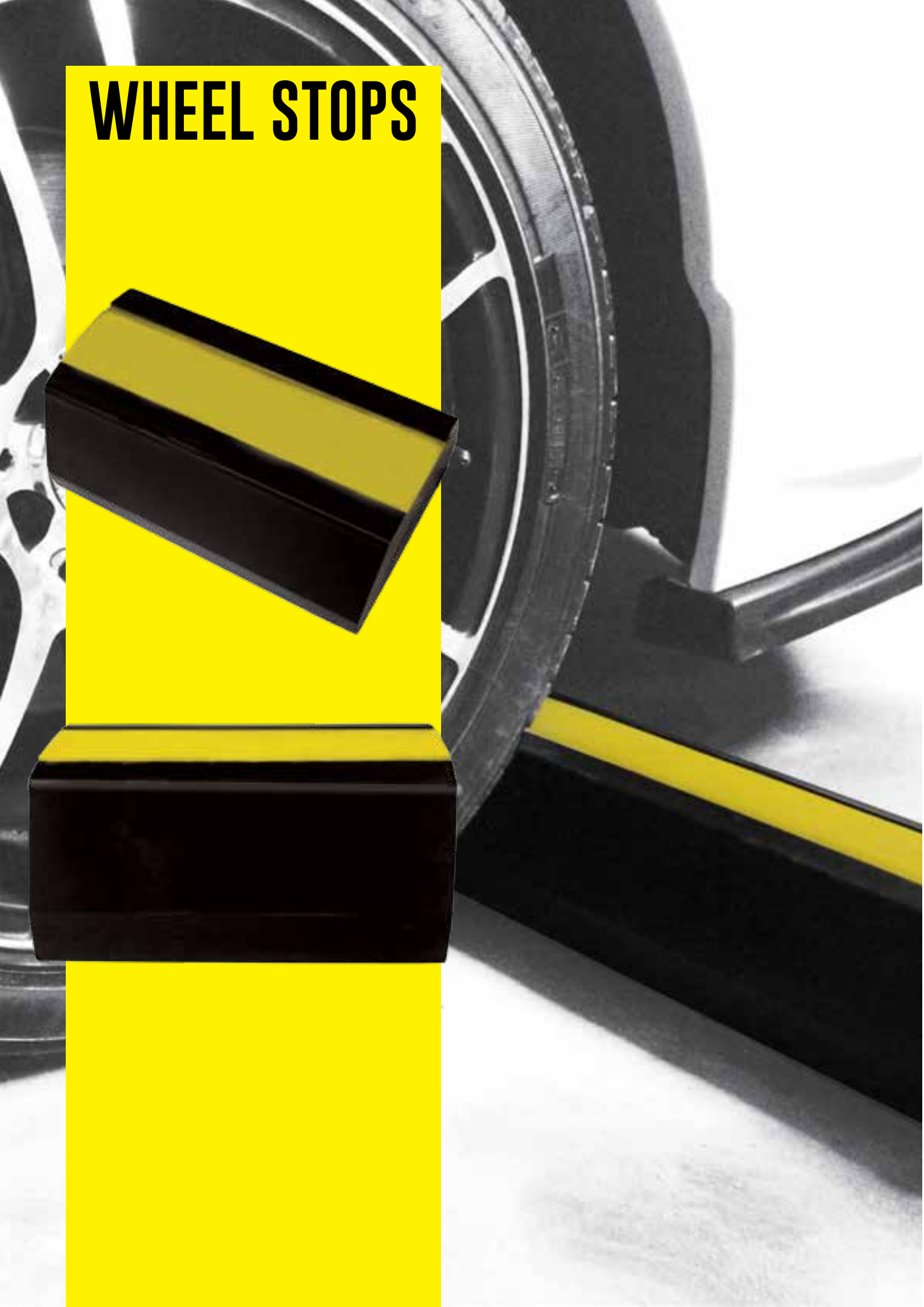
Type	Thickness (mm)	Width (mm)
WG - B1	30	120
WG - B2	25	200
WG - B3	50	200

Black with yellow strip

Type	Thickness (mm)	Width (mm)
WG- BY1	25	200
WG- BY2	50	200



WHEEL STOPS



WHEEL STOPS

Tomorrow is your reward for working safely today.



Description

Parking Blocks (Wheel Stop) are fabricated from premium quality Natural /EPDM rubber including: Shore of hardness: 40-90, Tensile failure stress: 25 M pa, and Possible temperature:-50 to 150 c. They have high resistance to severe impact & brutal weather conditions. Parking Blocks will help bring order to your residential and parking lots. These can be installed onto the ground of the allotted /painted Parking Slots to prevent the car from going beyond a certain limit thus protecting the wall / glass glazing structure & the car itself from damages. Solid coloring throughout means they never need painting and will retain an attractive appearance even under the harshest of conditions. These are installed with the help of epoxy & anchor bolts.

Materials

Wheel stoppers are made of high resistant extruded rubber with excellent weather resistance, crack resistance and abrasion resistance quality. It comes in black rubber with yellow strip.

EPDM - Ethylene Propylene Diene Monomer [M-Class] Rubber

Shore of Hardness [40 - 90]

Tensile Failure Stress [25 M pa]

Possible Temperature [-50 up to 150 C]

Sizes

Base width 130 mm by height of 100 mm

Base width 138 mm by height of 100 mm

Base width 150 mm by height of 150 mm

Standard Lengths

The standard length is 500 mm up to 2000 mm but the most running is 500 mm and 1800 mm

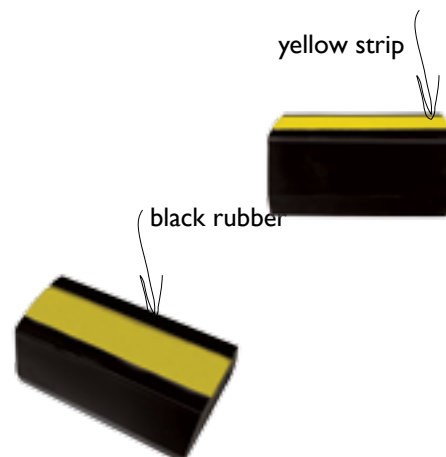
Installation

Wheel stopper can be fixed using rawl bolts by putting counter sunk in the stoppers. Our recommendation for fixing is through bolt M10 x 160 mm.

Technical Table...

Black with yellow strip

Type	Base Width (mm)	Height (mm)	Length (mm)
WS- BY1	130	100	500-2000
WS- BY2	138	100	500-2000
WS- BY3	150	150	500-2000



SPEED HUMPS



SPEED HUMPS

Protecting your site in your absence



Description

A speed hump is a gradual rise and fall of the pavement surface along the roadway extending across the pavement width. Speed humps cause a gentle vehicle rocking motion that causes driver discomfort, thus resulting in most vehicles slowing down to 20 kmh at each hump. Speed humps have the advantage of being self-enforcing. They are sometimes referred to as "sleeping police officers".

Materials

The speed humps are made of high impact resistance moulded rubber. They have excellent weather resistance and abrasion resistance quality.

Sizes

400 mm width x 500 mm length x 50 mm height
 400 mm width x 250 mm length x 68 mm height
 460 mm width x 500 mm length x 75 mm height

Standard Lengths

The standard length is 500 mm and 250 mm

Installation

Speed humps can be fixed using rawl bolts in alternate black and yellow humps with end caps. Our recommendation for fixing is through bolt M12x100 mm

EPDM - Ethylene Propylene Diene Monomer (M-Class) Rubber

Shore of Hardness [40 - 90]

Tensile Failure Stress [25 M pa]

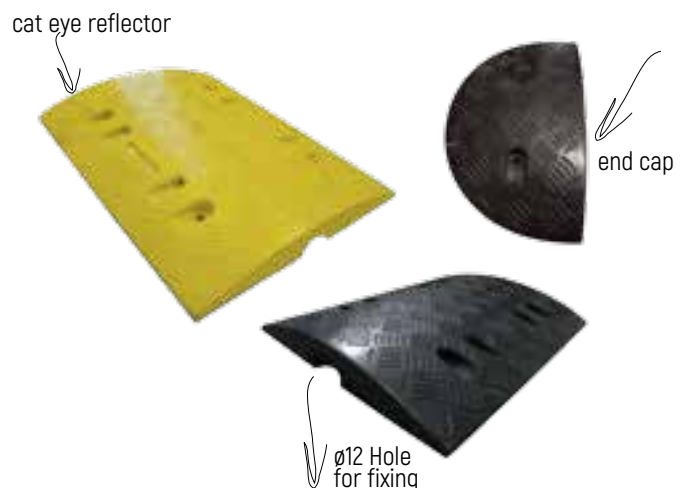
Possible Temperature [-50 up to 150 C]

Technical Table...

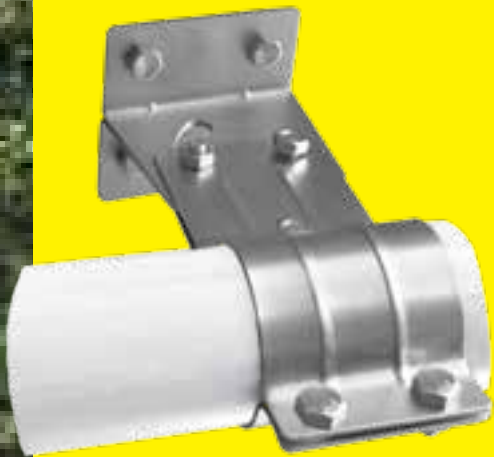
Black with yellow strip

Black with yellow strip

Type	Base Width (mm)	Height (mm)	Length (mm)
SH - 1	400	500	50
SH - 2	400	250	68
SH - 3	460	500	75



TRAFFIC MIRRORS



TRAFFIC MIRRORS

Safety does not happen by accident.



Description

Convex mirrors are commonly used for security and safety reasons to overcome sight restriction problems in visibility deficient areas. It sells high visibility for roads and highways when the speed of cars is low. It is ideal for viewing blind spots, driveways, garages, warehouses, shop, factories, schools, parking areas etc.. They are also increasingly being used in the public road environment by private individuals at sight restricted private property accesses. They are also adjusted to any angle to allow an optimal line of sight. Last but not least, they do not have normal or tough environmental conditions since they can be used widely.

Materials

U Guard convex acrylic mirrors with anti aging fiber glass mirror frame. It is made up of a composite aluminum (polyethylene). The thickness of the acrylic mirror is 2 mm. And the back side is 0.5 cm and it is 100 % UV stabilized component. It can be installed both on the wall and pole. Besides, it comes with large radius of curvature for minimum distance distortion.

Installation

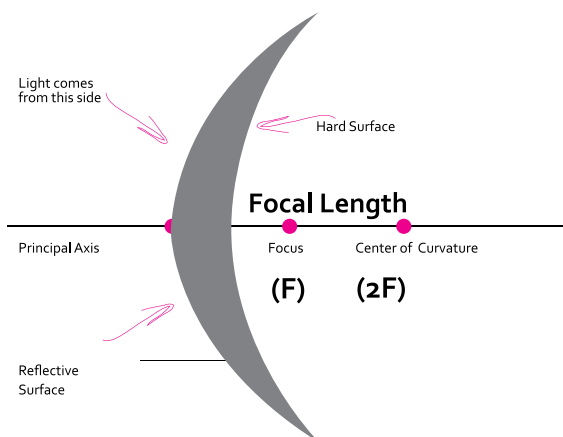
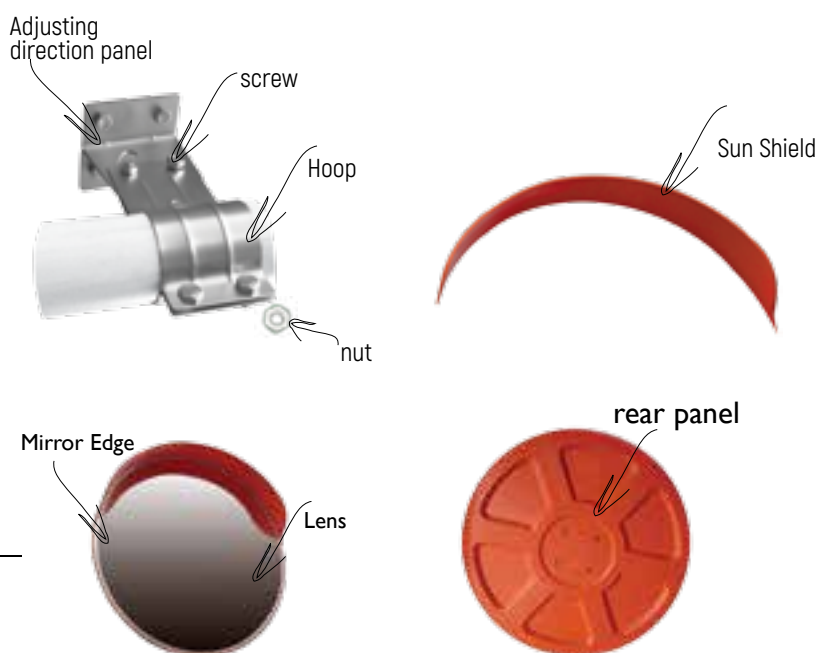
The convex mirror should be installed at a location that provides the best view of the road and the oncoming vehicles concerned. Mirrors should be positioned such that the motorist in the vehicle entering (ie. the one required to give-way) can see the opposing vehicle in approximately the center of the mirror. Ideal traffic solution for carparks and entrances.

Standard Diameter

The standard diameter is 600 mm. It also comes in 300 mm, 450 mm, 650 mm, 750 mm, 800 mm and 900 mm.

The bolt screw is M10.

The required distance of the general view is 7, 10 and 18 mtr.



Contact Information

Sales Offices/Entities

KINGDOM OF SAUDI ARABIA

unitech.ksa@ikkgroup.com

Jeddah

Tel : +966 12 627 8222

Mak kah/Taif

Tel : +966 12 541 1206

Mad inah

Tel : +966 14 8420959

Yanbu

Tel : +966 14 396 8885

Gizan

Tel : +966 17 321 6660

Riyadh

Tel : +966 11 292 8200

Qassim / Buraidah

Tel : +966 16 316 1122

Dammam

Tel : +966 13 8590097

Hufuf

Tel : +966 13 530 1474

Khamis Mushayt

Tel : +966 17 237 5929

Jubail

Tel : +966 13 361 4390

Tabuk

Tel : +966 56 808 2024

Skakah / Qurayyat

Tel : +966 16 382 3946

UNITED ARAB EMIRATES

Dubai - Al Rashidiyah

unitech.dubai@ikkgroup.com

Tel : +971 4 2591 773

Abu Dhabi - Musaffah

unitech.auh@ikkgroup.com

Tel: +971 2 552 3393

OMAN

Muscat

unitech.oman@ikkgroup.com

Tel : +968 24 591 006

EGYPT

Cairo

unitech.egypt@ikkgroup.com

Tel : +20 2 3820 6477

KUWAIT

Kuwait City

unitech.kuwait@ikkgroup.com

Tel : +965 2 4924 937

BAHRAIN

Manama

unitech.bahrain@ikkgroup.com

Tel : +973 17 874 897

QATAR

Amman

unitech.qatar@ikkgroup.com

Tel : +974 4451 3301

LEBANON

Beirut

unitech.lebanon@ikkgroup.com

Tel : +961 1 858 277

JORDAN

Amman

Tel : +962 6 5515905

PAKISTAN

Lahore

unitech.pakistan@ikkgroup.com

Tel: +92 42 3230157

INDIA

Kerala

Tel : +91 483 3578 558

SFSP Factories

SFSP - KSA

Specialized Factory for Steel Products

sfsp.jeddah@ikkgroup.com

3rd Industrial City / Jeddah

Tel: +966 12 637 4482

SFSP / EGYPT

Specialized Factory for Steel Products

sfsp.cairo@ikkgroup.com

6th of October City Giza

Tel : +20 2 3820 6477

SFSP / UAE

SIGMA Factory for Steel Products

sfsp.uae@ikkgroup.com

DIC (Dubai Industrial City)

Tel : +971 4 818 1919

SFSP / LEBANON

Specialized Factory for Steel Products / s.a.r.l

sfsp.lebanon@ikkgroup.com

Tanayel, Bekaa

Tel: +961 8 514 290

Engineering & Design

UNITED KINGDOM

unitech.uk@ikkgroup.com

Manchester

Tel : +44 77 325 00120

Marketing & Multimedia

Multi-D s.a.r.l

multi-d@ikkgroup.com

Multi-D

Beirut, Lebanon

Tel : +961 1 841 155

