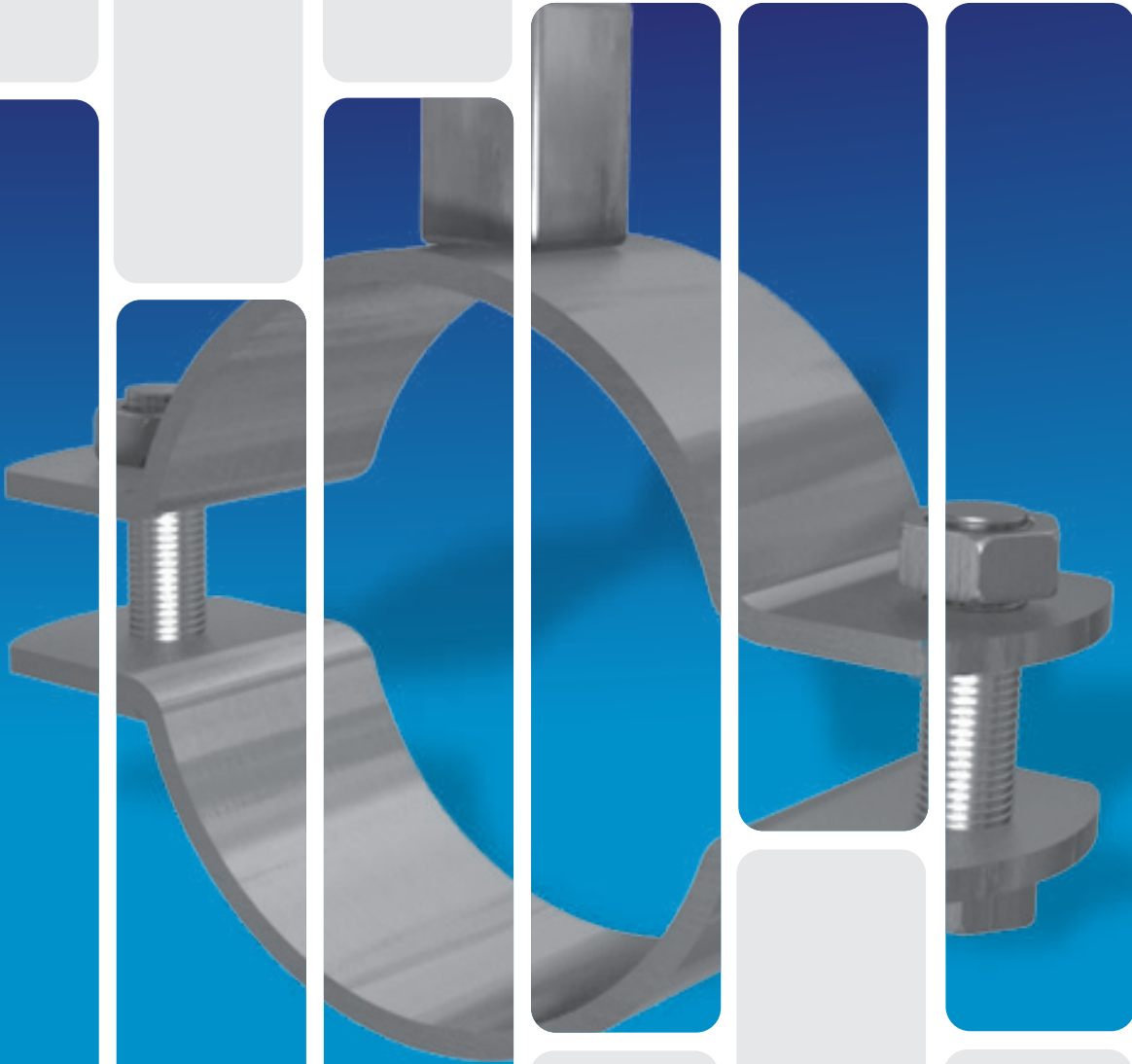




## PIPE CLAMPS & HANGERS WITH ACCESSORIES



[www.unitech-ikk.com](http://www.unitech-ikk.com)  
[www.sfsp-ikk.com](http://www.sfsp-ikk.com)  
[www.ikkgroup.com](http://www.ikkgroup.com)



**UNITECH**  
For Building and Construction Materials

## PIPE CLAMPS & HANGERS WITH ACCESSORIES

PRODUCED BY



SPECIALIZED FACTORY FOR STEEL PRODUCTS  
SIGMA FACTORY FOR STEEL PRODUCTS



# Pipe Clamps & Hangers With Accessories

## Index

About UNITECH	4
Pipe Clamps & Hangers	19
Support System	29
Threaded Accessories	33
Technical Data	35
Contact Information	44

**ABOUT  
UNITECH**

# Unitech Introduction

Unitech is a Saudi based Multinational Company providing building and construction solutions that is empowering the region's construction industry for the past 40+ years. We have been successfully providing solutions through mastering our main business activities: Design, Manufacture and Trade.

**Design:**

Provide Design & Engineering Solution to the construction sector, complying with international & local standards.

**Manufacture:**

Operating with Global Standards, we are widely recognized for our advanced light steel solutions and Hot-Dip Galvanization Facility.

**Trade:**

We are one of the region's largest Importer/Exporter of Building & Construction Materials.

Unitech is an **ISO QMS 9001:2015** certified company and is a member of the US Green Building Council. Our experienced teams and operations are present across the Middle-East North Africa regions (MENA) and Pakistan, giving us an extensive regional network that benefits our clients and partners. We are also present in Europe via our design and engineering office in Stuttgart.

For more information, please visit: [www.unitech-ikk.com](http://www.unitech-ikk.com)

---

# Mission & Vision

**Mission**

UNITECH is committed to transforming the construction and building sector by equipping engineers with advanced solutions and expert support at every project stage. As a leading industry provider, we empower our team to deliver exceptional service that consistently exceeds expectations. By fostering a cohesive and forward-focused culture, we attract and retain top talent, driving our mission forward. Our innovative, customer-centric products set new industry benchmarks and pave the way for future progress.

**Vision**

To be the Customer's First Choice...

# Our Strategy

Unitech's strategy continues to focus on accelerating its business throughout the region, to service the construction sector via superior products & solutions, backed up by a group of highly experienced people in the field. Unitech also aims to enhance its geographical presence in its areas of interest and where opportunities exist.

We combine a deep understanding of building and construction materials markets with a successful history of upgrading our products and developing our processes.

We have the qualified employees, the know-how and the products to service major construction projects, medium sized to mega projects taking in care our positive contribution to our societies.

**We thrive towards excellence by acknowledging:**



Customer Satisfaction



Partner and Supplier Relations



Employee Retention



Positive Influence on Society and Environment

# Our Employees

We are a company that prides itself on its 'family' culture and we seek out high-caliber people. We are a company that has, at its core, a team philosophy that is clearly apparent each and every day - there is a real sense of being there for one another.

We believe in nurturing the skills of our team members and providing growing levels of responsibility. Our people bring unique skills, energy, expertise, experience and perspectives to our workforce.

Unitech's family of employees consists of experienced, well-motivated and dedicated team of engineers, technicians, sales executives and management staff. This team is committed to serve our customers, with the best solutions available in the market.

# Our Journey

## 40+ Years of Excellence

Since 1979, having been set to become an independent company under the framework developed by Sheikh Isam Kabbani, Unitech started its journey of success with confidence and enthusiasm, hard work and care to detail and a commitment to become the best within its industry.

Its dedicated people could only imagine what the future could bring to this newly established entity. Unitech's journey of success has been marked with outstanding achievements and superior accomplishments. Year by year, Unitech has been acknowledged as the "First Choice for Building & Construction Material" by major construction consultants in the region, governmental authorities, well-known contracting and project development corporations.

We have obtained invaluable knowledge about the construction industry in general, providing specialized solutions to construction projects throughout MENA region. From a couple of outlets in Saudi Arabia, Unitech today is present all over the Kingdom and in several countries throughout the region providing its products and solution to various locations worldwide.



**Est. 1979**

### THE BEGINNING

Unitech was established in the Western Region of KSA as a Sales Company selling basic construction material.

During the same year, another branch was established in the heart of the kingdoms capital, Riyadh.



**1980 to 1989**

### AGE OF GREAT RISK

Unitech Dammam was open for business in the oil-rich eastern coast of Saudi Arabia.

Within these 10 years the idea of in-house manufacturing facility was born and Specialized Factory for Steel Products (SFSP) was established in Riyadh.



**1990 to 1999**

### AGE OF GROWTH

Branches of Unitech were established in Makkah, Madina, Khamis Mushayt and Jubail.

The need to increase its range of products and the necessity to have production lines for mass production lead to the decision to move the SFSP Factory from Riyadh to Jeddah.

# Pioneering Construction Since 1979

We are constantly evolving in order to become more flexible in our operations, more sustainable in our societies, and more innovative in conducting our business.

By delivering superior products tailored to the specific construction needs, ambitious solutions, and an outstanding customer service, we serve today's needs through developing tomorrow's markets.

Helping construction projects experience success is what fueled its days. Unitech is keen to continue offering superior products, a wide spectrum of solutions, governed by our top-notch management style.

Such aspirations require trust in our responsibilities. Our Responsibilities for the future and with this in mind we continue to target excellence with committed efforts.



## 2000 to 2015

### AGE OF CONSTRUCTION BOOM

Qassim, Hofuf and Yanbu Branches were inaugurated in KSA and branches outside KSA were established in UAE, Egypt, Lebanon, Oman, Jordan and Germany in order to facilitate the construction boom in the Middle East.

During this period SFSP state of the art facilities were launched in DIC UAE and Unitech thrived, marking some of the best years in business.



## 2016 to 2019

### AGE OF GREAT CHANGE

This period, marked the age of great change in order to align with the economic shift in the GCC and the world in general.

Company wide right sizing initiatives were taken especially in KSA to align with the kingdom's ambitious vision 2030 and during this period the upgraded SFSP state of the art facilities were launched in JIC 3 KSA.



## 2020 & Beyond

### NEW FRONTIER

This period marks the expansion of Unitech into the South and Central Asian territories. We aim to cater these markets and play an active role in these countries development.

During 2020, Unitech Pakistan was officially inaugurated and marked the entrance of Unitech into Asian Market.



# Our Manufacturing Arm

## SFSP

SFSP is a leading manufacturer and fabricator of light steel construction products in the region, servicing the construction sector through its state of the art facilities which are spread all over the MENA region. Products of SFSP are manufactured from quality raw material according to the relevant international standards to meet all kinds of construction projects requirements, such as MEP, façade, blockwork & waste management systems.

### Commitment to Quality

Our commitment to quality is clearly revealed in the way we do our business; our processes, our close interaction with our clients as well as the strict product inspection procedures. To achieve this, we have implemented quality systems & processes that are continually being improved to satisfy our customer's needs.

### Product Development

Product development process is substantial to the success of our business. We leverage all resources to provide up-to-date reliable products, environmentally friendly, durable to withstand the toughest weather conditions. Our engineers are constantly testing the products, seeking to present a combination of performance and quality across all our product ranges.

For more information, please visit:  
[www.sfsp-ikk.com](http://www.sfsp-ikk.com)

---

# Value Chain

Our value chain starts up with the quality of the raw materials and ends up in client satisfaction. Our business practices backed up by all technologically essential business elements are supported by an efficient logistics, warehousing and delivery system that maintains a valuable supply chain for products.

The value chain is integrated in our business module, giving us strength and preserving our good reputation gained through the past 4 decades.

# Engineering Specialty

Our products development engineers integrate their vast knowledge to provide the perfect solution to projects within the required specifications and time-frame.

The products development department maintains highly skilled calibers with a dedication towards efficient and reliable solutions even in the most complicated cases where delicacy and skillful approaches are indispensable.

## Design and Product Safety

Our design and engineering office in Stuttgart ensures our products comply with relevant European and international standards of fabrication, taking into attention the safety factors which govern the public safety of projects.

## Sustainability and Responsibility

We are constantly working hard to reduce our environmental footprints while maintaining the high quality and safety standards. We have set our targets to become three times more efficient in the next 10 years. Our responsibility towards our stakeholders is valued through our positive contributions towards our colleagues, our business partners and our communities as well.

---

# Our Design Office



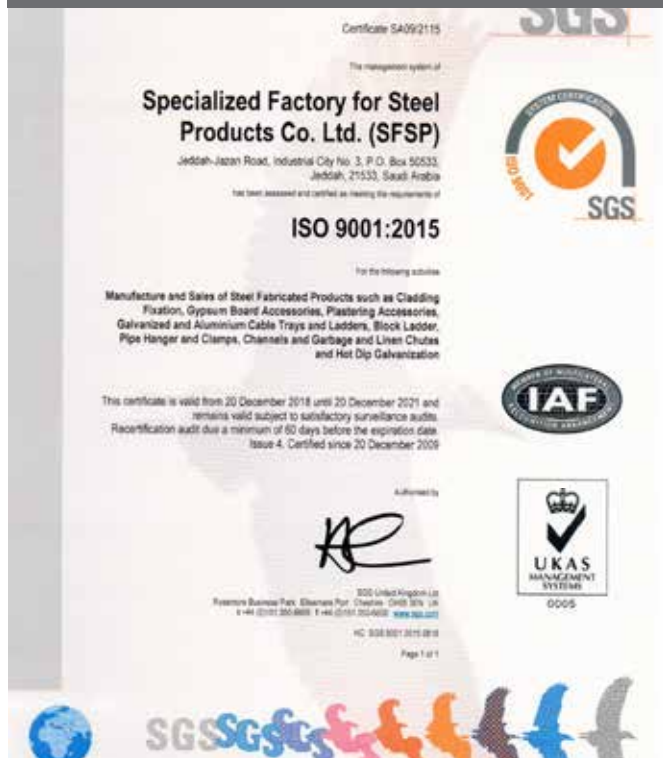
UNITECH DEUTSCHLAND is a "Design & Engineering" Office. Unitech Germany support Unitech & SFSP operations through well-informed cadre of engineers. They help our customers from conception to the completion by delivering design, engineering and project management services.

Thanks to our multidisciplinary team in Unitech Germany and their expertise, we assist you in your ambition to develop your innovation, your engineering and your organization. Our goal is to serve our clients through these elements:

- Excellent in engineering ideas and solutions
- High quality in performance
- Firmness on meeting deadlines

# SFSP Certifications

## ISO 9001 : 2015 (Quality Management Systems)



## 14001 : 2015 (Environmental Management System)



## ISO 45001 : 2018 (Occupational Health & Safety)



## STD 096 (Q-Mark Certificate)



**ISO 9001 : 2015**  
(Quality Management System)



## Certificate of Registration

This is to certify that the Management System of:

**Sigma Factory for Steel Products**

P.O. Box 37991, Saih Suhaib - 3, 4 Round About, Dubai Industrial City, Dubai,  
United Arab Emirates.

has been approved by Alcumus ISOQAR and is compliant with the requirements of:

**ISO 9001:2015**



**Certificate Number:** 22244-Q15-001  
**Initial Registration Date:** 23 February 2015  
**Previous Expiry Date:** 22 February 2024  
**Recertification Date:** 14 November 2023  
**Re-issue Date:** 30 November 2023  
**Current Expiry Date:** 22 February 2027

**Scope of Registration:**

Trading and Manufacturing of all kinds of Steel Related Construction Materials.

Signed:  
Alyn Franklin, Chief Executive Officer  
(on behalf of Alcumus ISOQAR)

**ISO 14001 : 2015**  
(Environmental Management System)



## Certificate of Registration

This is to certify that the Management System of:

**Sigma Factory for Steel Products**

P.O. Box 37991, Saih Suhaib - 3, 4 Round About, Dubai Industrial City  
Dubai, United Arab Emirates.

has been approved by Alcumus ISOQAR and is compliant with the requirements of:

**ISO 14001:2015**



**Certificate Number:** 22244-EMS-001  
**Initial Registration Date:** 22 September 2015  
**Previous Expiry Date:** 21 September 2024  
**Recertification Date:** 04 June 2024  
**Re-issue Date:** 04 July 2024  
**Current Expiry Date:** 21 September 2027

**Scope of Registration:**

Trading and Manufacturing of all kinds of Steel Related Construction Materials.

Signed:  
Alyn Franklin, Chief Executive Officer  
(on behalf of Alcumus ISOQAR)

This certificate will remain current subject to the company maintaining its system to the required standard.  
This will be monitored regularly by Alcumus ISOQAR. Further clarification regarding the scope of this certificate  
and the applicability of the relevant standards' requirement may be obtained by consulting Alcumus ISOQAR.

**OHSAS 45001 : 2018**  
(Health & Safety Management System)



## Certificate of Registration

This is to certify that the Management System of:

**Sigma Factory for Steel Products**

P.O. Box 37991, Saih Suhaib - 3, 4 Round About, Dubai Industrial City  
Dubai, United Arab Emirates.

has been approved by Alcumus ISOQAR and is compliant with the requirements of:

**ISO 45001:2018**



**Certificate Number:** 22244-OHS-001  
**Initial Registration Date:** 22 September 2015  
**Previous Expiry Date:** 21 September 2024  
**Recertification Date:** 10 June 2024  
**Re-issue Date:** 20 June 2024  
**Current Expiry Date:** 21 September 2027

**Scope of Registration:**

Trading and Manufacturing of all kinds of Steel Related Construction Materials.

Signed:  
Alyn Franklin, Chief Executive Officer  
(on behalf of Alcumus ISOQAR)

This certificate will remain current subject to the company maintaining its system to the required standard.  
This will be monitored regularly by Alcumus ISOQAR. Further clarification regarding the scope of this certificate  
and the applicability of the relevant standards' requirement may be obtained by consulting Alcumus ISOQAR.

Registered in United Arab Emirates as BM TRADA VENTURES LLC (TRADING AS BMTV)  
Unit 904, Business Avenue Building, PO Box 30945, Dubai, UAE



Alcumus ISOQAR Limited, Alcumus Certification, Cobra Court, 1 Blackmore Road, Stretford, Manchester M32 0QY.  
T: 0161 865 3699 F: 0161 865 3685 E: iso@alcumusgroup.com W: www.alcumusgroup.com/isoqar  
This certificate is the property of Alcumus ISOQAR and must be returned on request.

**BS EN 61537:2007 (KEMA - KEUR Certified For Cable Management Products)**

## CERTIFICATE

Issued to:  
Applicant:  
**Isam Kabbani Trading Est. (Unitech)**  
Rashidiya  
Dubai, United Arab Emirates

Manufacturer/Licensee:  
**Sigma Factory for Steel Products (SFSP)**  
Saih Suhaib 3, 4RA, Dubai Industrial City,  
Dubai, United Arab Emirates

Product : Cable management system  
Trade name : SFSP  
Types : IE-CT-X-10, IE-CT-X-12, IE-CT-X-15, IE-CT-X-20

The product and any acceptable variation thereto is specified in the Annex to this certificate and the documents therein referred to.

DEKRA hereby declares that the above-mentioned product has been certified on the basis of:  
- a type test according to the standard IEC 61537:2006 and EN 61537:2007  
- an inspection of the production location according to CENELEC Operational Document CIG 021  
- a certification agreement with the number 2156954

DEKRA hereby grants the right to use the KEMA-KEUR certification mark.

The KEMA-KEUR certification mark may be applied to the product as specified in this certificate for the duration of the KEMA-KEUR certification agreement and under the conditions of the KEMA-KEUR certification agreement.

This certificate is issued on: 20 January, 2014 and expires upon withdrawal of one of the above mentioned standards.

**Certificate number: 2156954.01**

DEKRA Certification B.V.

drs. G.J. Zoetbrood  
Managing Director

H.R.M. Barends  
Certification Manager

© Integral publication of this certificate is allowed

ACCREDITED BY THE  
DUTCH ACCREDITATION  
COUNCIL



DEKRA Certification B.V. Meander 1051, 6825 MJ Arnhem P.O. Box 5185, 6802 ED Arnhem The Netherlands  
T +31 88 96 83000 F +31 88 96 83100 www.dekra-certification.com Registered Arnhem 09085396



## UL Certification\* (Cable Trays)

### CERTIFICATE OF COMPLIANCE

Certificate Number 20160816-E483358  
Report Reference E483358-20160816  
Issue Date 2016-AUGUST-16

Issued to: Sigma Factory for Steel Products  
Saii Shuaib 3, 4 R/A Dubai Industrial City  
Opposite DEWA Substation  
Dubai UNITED ARAB EMIRATES

This is to certify that representative samples of CABLE TRAYS  
Steel Channel Cable Tray, Ventilated, Heavy Duty (HCT),  
Very Heavy Duty (VCT) cable trays.

Have been investigated by UL in accordance with the  
Standard(s) indicated on this Certificate.

Standard(s) for Safety: ANSI/NFPA 70, "National Electrical Code" (NEC)  
Additional Information: See the ULC Online Certification Directory at [www.ulc.ca](http://www.ulc.ca)  
for additional information

Only those products bearing the ULC Listing Mark should be considered as being covered by ULC's  
Listing and Follow-Up Service.

The ULC Listing Mark generally includes the following elements: the symbol ULC in a circle, with  
the word "LISTED", a control number (may be alphanumeric) assigned by ULC, and the product  
category name (product identifier) as indicated in the appropriate ULC Directory.

To confirm the status, validate the above information via the online directory.

Look for the ULC Listing Mark on the product.

*John Henry*  
John Henry, General Manager, Director of Sales - Canada  
UNDERWRITERS LABORATORIES OF CANADA INC.

Any information and documentation involving ULC Mark services are provided on  
behalf of ULC. For questions, please contact ULC's Customer Service Dept.

Page 1 of 1

## UL Certification\* (Chute Type Fire Doors)

### CERTIFICATE OF COMPLIANCE

Certificate Number 20170811-R38825  
Report Reference R38825-20170811  
Issue Date 2017-AUGUST-11

Issued to: Sigma Factory for Steel Products  
Saii Shuaib 3, 4 R/A Dubai Industrial City  
Opposite DEWA Substation  
Dubai UNITED ARAB EMIRATES

This is to certify that representative samples of CHUTE-TYPE FIRE DOORS  
Chute-type fire door and frame assembly of the insulated  
type, rated up to and including 2 hr, 450°F Temperature  
Rise Rating.

Have been investigated by UL in accordance with the  
Standard(s) indicated on this Certificate.

Standard(s) for Safety: ANSI/UL 10B, Fire Tests of Door Assemblies  
Additional Information: See the UL Online Certifications Directory at  
[www.ul.com/database](http://www.ul.com/database) for additional information

Only those products bearing the UL Certification Mark should be considered as being covered by UL's  
Certification and Follow-Up Service.

Look for the UL Certification Mark on the product.

## UL Certification\* (Fire Barrier)

### CERTIFICATE OF COMPLIANCE

Certificate Number R40146  
Report Reference R40146-20220524  
Date 2022-May-25

Issued to: Sigma Factory for Steel Products  
Saii Shuaib 3, 4 R/A Dubai Industrial City  
Opposite DEWA Substation  
Dubai AE

This is to certify that representative samples of MECHANICAL JOINT ASSEMBLIES  
The products covered by this Section are mechanical joint  
assemblies designated Nexus Fire Barrier (NFB) for use in  
various joint systems described in the Fire Resistance  
Directory.

Have been investigated by UL in accordance with the  
Standard(s) indicated on this Certificate.

Standard(s) for Safety: UL 2079, Tests for Fire Resistance of Building Joint  
Systems

Additional Information: See the UL Online Certifications Directory at  
<https://iq.ulprospector.com> for additional information

This Certificate of Compliance does not provide authorization to apply the UL Mark. Only the UL Follow-Up  
Services Procedure provides authorization to apply the UL Mark.

Only those products bearing the UL Mark should be considered as being UL Certified and covered under UL's  
Follow-Up Services.

Look for the UL Certification Mark on the product.

*Bruce Mahlenholz*  
Bruce Mahlenholz, Director North American Certification Program  
UL LLC

Any information and documentation involving UL Mark services are provided on behalf of UL LLC (UL) or any authorized licensee of UL. For questions, please  
contact a local UL Customer Service Representative at [ul.com/customer-service](http://ul.com/customer-service)



© UL or any authorized licensee of UL. For questions, please



# SFSP Products

SFSP produces a variety of products ranging from cable management systems; cable trays, cable ladders, basket trays, trunkings and support systems, to mechanical cladding fixations, steel lintels and block work accessories, plasterers' beads, expanded metal and block work reinforcement, strut channel systems, pipe clamps & hangers, gypsum profiles as well as garbage and linen chutes. With the introduction of new machines and the enhancement of production methods, SFSP continues to develop its production methods systematically as well as thoroughly. Its design office in Stuttgart, Germany provides a comprehensive design and calculation case studies, enabling the factory to have the safety factors required for the usage of its products.



## MEP Solutions

### Cable Management Systems

Cable Management Systems are economical and designed to meet most requirements of cable and electrical wire installations and comply to international standards of fabrication and finishing.



### Cable Trays & Accessories

Cable Trays are designed to meet most requirements of cable and electrical wire installations and comply to local and international standards of fabrications and finishes.



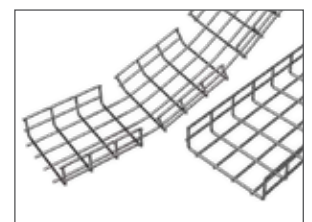
### Cable Ladders (Welded & Swaged)

Cable Ladders of different side heights are available upon request.



### Basket Trays & Accessories

SFSP's Basket Tray systems make connections fast and simple with limited need for tools. Its design allows for continuous airflow, and prevents heating up of cables. SFSP's Basket Tray comes in a full range of sizes and is made with high-strength welded steel wires.



### Cable Trunkings

Cable Trunkings and Accessories are offered in a comprehensive range. Mill galvanized, hot-dip galvanized, and powder coated are the various finishes produced in our factories.



### Underfloor Trunking

Underfloor Trunking Systems solutions incorporate a range of products for the distribution of power and data services, it is a coordinated set of containments that protect, segregate, contain, and route cables within a given environment.

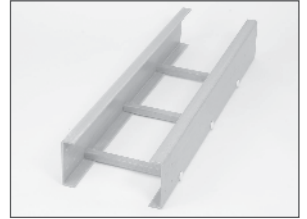
---



### Fiberglass Reinforced Plastic (FRP) Cable Tray / Ladder

SFSP Fiberglass Reinforced Plastic (FRP) Cable Management Systems are designed, manufactured, and tested to be installed in most harsh environmental conditions of onshore and offshore facilities for several industries including Oil and Gas, Petrochemicals, Manufacturing, Mining and others.

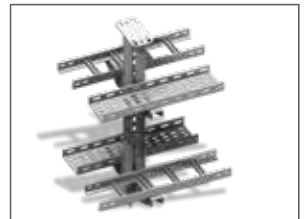
---



### Cable Management Support Systems

Cable Support Systems are well designed to provide necessary support for cable trays, cable ladders and trunkings. Cable supports are manufactured according to common standards from high quality raw materials.

---



### C-Channel Strut Systems

SFSP's Metal Framing Systems provide an economical solution for electrical, mechanical and industrial supports with a wide variety of applications in the construction industry.

Applications: - Pipe and Conduit Supports - Tunnel Pipe Stanchions - Racks and Shelvings - Wall Framings.

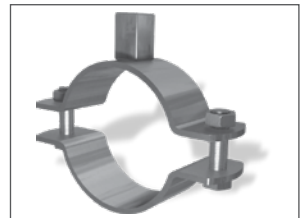
---



### Pipe Clamps & Hangers

Pipe Clamps and Hangers from SFSP used in the support of pipes and equipments are manufactured according to the highest standards of fabrication. A diversified choice of Pipe Hangers, Pipe Clamps, EMT Straps, Omega Clamps, Beam Clamps, J and U-Bolts and Threaded Accessories.

---



### Galvanized Threaded Rods and Accessories

Threaded rod, often referred to as a stud, is a rod of varying length that is threaded in a helical structure. Similar in appearance to a screw, the threading extends around and along the rod to cause rotational movements when in use.

---



### Access Panels by FEROX

Ferox Access Panels provides complete solutions of several types of access panels including Hook Type, Pivot Type, Tiled Type as well as fire rated access panels and hygienic access panels. A variety of finishes are available including stainless steel of different grades, galvanized steel with powder coating.

Ferox Access Panels are manufactured from high quality material and assembled with stainless steel hardware.

---



### Roof hatches by FEROX

Roof hatch provides safe and convenient access to commercial building roof areas using interior ladders and stairs for maintenance work. It can be installed on flat roofs with a maximum slope of 30°. Made of steel frames, doors and stainless steel hardware. Powder coated to provide corrosion resistance and outstanding exterior durability.

---





# Architectural & Finishing Solutions

## Mechanical Cladding Fixation (Stangle)

Stangle Cladding Fixation includes design, calculation and production of several types of mechanical fixings and accessories used for cladding purposes. Stainless and galvanized steel are among the various materials used in the fabrication.



## Aluminium System for Stone Cladding

SFSP aluminum systems are designed and calculated to provide a practical & safe solutions of stone cladding. Wide range of aluminum profiles with different shapes to support different types of stone cladding.



## Waste Management Sys. (Garbage & Linen Chutes)

Chutes from SFSP are very convenient, simple and low cost method of controlling and disposing of refuse and linen. Chutes meet the most stringent requirements of environmental health and safety.



## Dry Wall & Ceiling Profiles

Gypsum Boards are considered among the most economic and ideal way for wall partitioning. Easy to install, saves time and money, gypsum boards can be used as a backing for wall treatments such as wall paper, fabric, tile and wood paneling or it can simply be painted.



## Metal Ceiling Grid Systems

SFSP Ceiling Grid System is a practical, convenient ceiling system. It has a complete range of main c-channel sections and complementary parts so that you can adapt the modules to suit your design needs and load requirements.



## Expansion Joint System by Nexus

Our variety of expansion joints includes profiles for walls and floors, profiles for seismic movements, watertight profiles. Our products suit pedestrian as well as heavy load traffic areas.



## Entrance Matting System by Nexus

Nexus Entrance matting systems provides heavy duty entrance mats, composed of aluminium profiles with carpet, brushes or rubber inserts. For any design of any shape, being round, square, oval, or any other symmetrical or asymmetrical shape, Nexus offers a variety of entrance matting profiles





### Profiles by Nexus

Nexus offer comprehensive solutions for the construction industry ranging from Expansion Joint Covers and Fire Barriers to Entrance Matting Systems, Wall and Floor Profiles, Tactile Solutions, etc... NEXUS range of products is manufactured according to most common international standards to meet the requirements of commercial, residential, governmental, transportation, healthcare and educational projects.



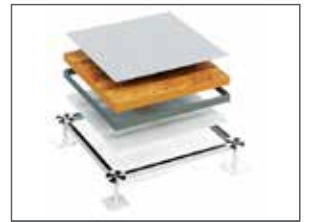
### Phenolic Compartment by CUBIX

CUBIX phenolic compartment and partition systems are manufactured and customized to meet the precise needs of simple to complicated projects with its top-notch finish, quality of material and within a timely delivery. A complete solution with a wide selection of colors and textures are available.



### Raised Access Flooring by PIXEL

PIXEL Raised Access Flooring offers comprehensive solutions of High Tech Raised Access Flooring Systems for the construction industry. PIXEL Raised Access Flooring are manufactured according to most common international standards to meet the requirements of commercial, residential, governmental, transportation, healthcare, and educational projects.



### Metal Doors by FEROX

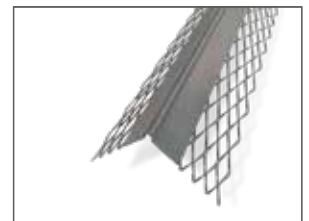
Ferox offers a wide variety of steel doors, manufactured according to international standards of fabrication and as per the legal requirement of commercial projects whether industrial environments, local authority buildings, leisure, hospitality, healthcare, transportation, education or retail offices, and shopping centers. Our range of steel doors includes fire rated steel doors, Insulated Doors, Acoustic Doors, Louvered Doors, Sliding Doors, Security Detonation Doors, Burglar Resistant Doors, Entry Gates and several other types to meet the requirements of all projects.



## Civil Solutions

### Expanded Metals, Plasterers' Beads

Expanded Metals help the formation of joints, protection of corners and resistance against cracks, chips and impact damage. SFSP manufactures in accordance with BS EN 13658 – 2, ASTM C847-18, BS EN 845-3:2003+A1:2008, ASTM A 951/A 951M - 2016 standards.



### Block Ladder Reinforcement

SFSP ladder and truss types are used for the reinforcement of brick and block masonry to give improved tensile strength to walls subjected to lateral loading e.g. wind and seismic. SFSP Block reinforcements reduces the risk of cracking either at stress concentration around opening.



### Steel Lintels & Block Work Accessories

Steel Lintels provide a combination of strength and light weight, resulting in efficient load bearing performance and increased productivity on site. They are characterized by their ease of installation in addition to time as well as money saving. SFSP manufactures Steel Lintel in accordance with BS EN 845-2:2013+A1:2016 and according to relevant standards BS 5977 Part 2:1983.



# SFSP Products are solely distributed by UNITECH for Building and Construction Materials

All Products Manufactured by Sfsp are Solely Distributed by SFSP Sister Companies in the Following Countries

## KSA

Isam Kabbani & Partners for Building and Construction Materials Co., Ltd.

شركة عصام قباني وشركاه لمواد الانشاء والتعمير المحدودة

## BAHRAIN

Isam Kabbani Trading Est.

مؤسسة عصام قباني التجارية

## UAE

Issam Kabbani Trading Company LL

شركة عصام قباني للتجارة

## EGYPT

Unitech Egypt for Building Materials

شركة يونيتك مصر لمواد البناء

## OMAN

Isam Kabbani & Partners Trading Co.

شركة عصام قباني وشركاه للتجارة

## QATAR

Unitech Qatar for Building & Construction Materials Ltd., W.L.L

شركة يونيتك قطر لمواد الانشاء والتعمير المحدودة

## KUWAIT

Hassan Kabbani for General Contracting Est.

مؤسسة حسان قباني للمقاولات العامة للمباني

## LEBANON

Unitech ME s.a.r.l

شركة يونيتك ميدل إيست ش.م.م

## PAKISTAN

Unitech IKK Pakistan (PVT.) LTD.

شركة يونيتك ميدل إيست ش.م.م

## SFSP CUSTOMER SERVICE CALL CENTER

### KSA

+966 13 8590097, Ext. 3214

### UAE

+971 4 8181925, Ext. 4269



# **PIPE CLAMPS & HANGERS**

# Pipe Clamps & Hangers

Pipe Clamps and Hangers from SFSP used in the support of pipes and equipment are manufactured according to the highest standards of fabrication. A diversified choice of Pipe Hangers, Pipe Clamps, EMT Straps, Omega Clamps, Beam Clamps, J and U-Bolts and Threaded Accessories.

Calculations are provided by our design office in Stuttgart, Germany.

## APPLICABLE STANDARDS

- BS 3974 Specifications for pipe hangers and support
- ASTM F 708 (standard practice for design and installation of rigid pipe hangers)
- Federal Specifications  
WW-H-171 E (Hanger and Support)  
A-A-1192 A (Bracket, Pipe)
- Manufacturers Standardization Society (MSS)

ANSI/MSS SP-58 Pipe Hangers and Supports - Materials, Design, Manufacture, Selection, Application, and Installation

MSS SP-69 Pipe Hangers and Support-Selection and Application

MSS SP-77 Guidelines for Pipe Support Contractual Relationships

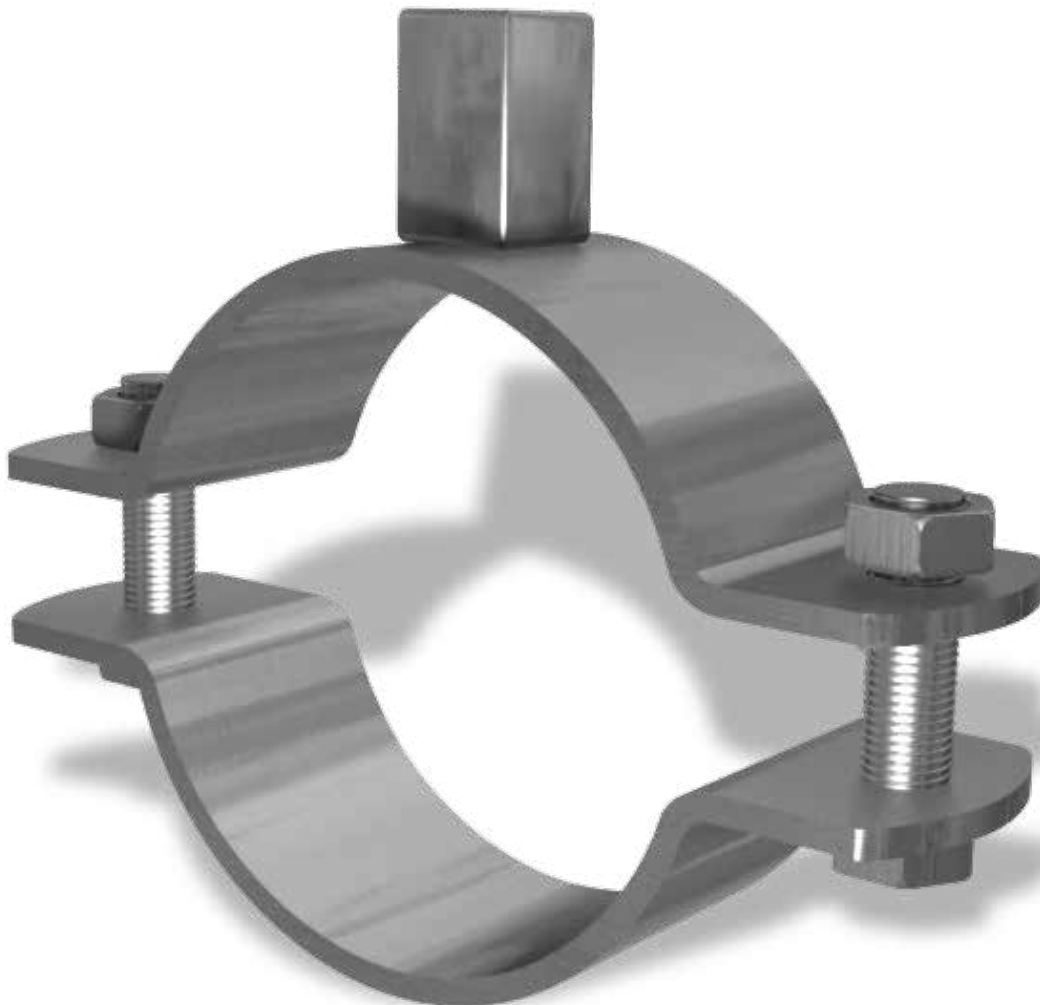
MSS SP-89 Pipe Hangers and Support-Fabrication and Installation Practices

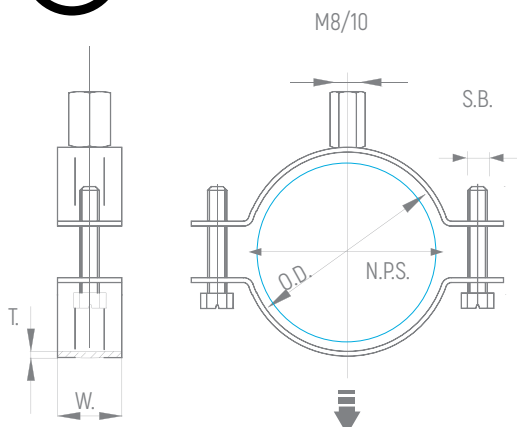
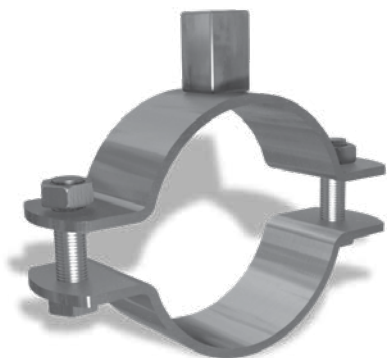
MSS SP-90 Guidelines for Terminology for Pipe Hangers and Support

MSS SP-127 Bracing for Piping Systems Seismic - Wind - Dynamic Design, Selection, Application

Pipe hangers offered in this section are designed to support pipes allowing for vertical adjustment and limited movement in the piping system.

- Material: Carbon Steels are used in the manufacturing of pipe hangers.
- Load Data: The load data published includes a safety factor of 4.0 unless noted (safety factor = ratio of ultimate load to the design load).

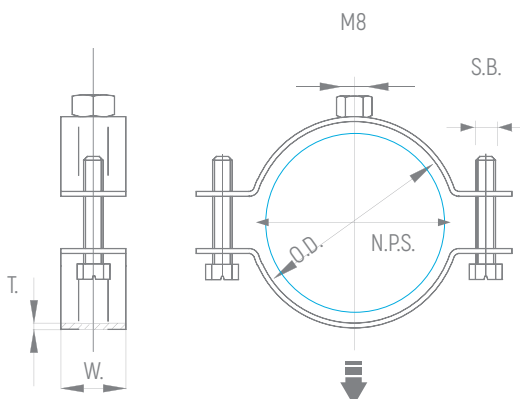
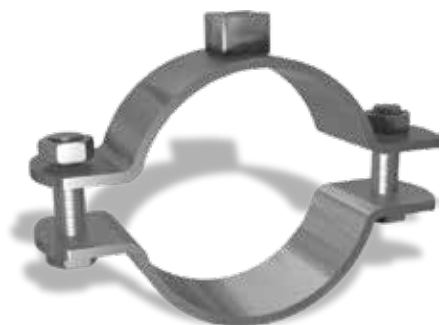




## Split Pipe Clamp with Long Nut M8/ M10 without rubber gasket

- **Material:** Steel S235
- **Service:** Multifunction screw with hexagonal combination head (slot & crosshead), c/ w retaining washer
- **Finish:** Electro Zinc Plated
- **Applications:**
  - Fresh water distribution pipes
  - Waste water distribution pipes
  - Gas distribution pipes
  - Heating pipes
  - Industrial pipe fitting
  - Mechanical installation
  - Process and control lines

	Nominal Pipe Size		Outside Diameter	Side Bolt	Thickness & Width	Load Capacity
Part No.	In	mm	mm	mm	mm	KN
PC-0010-C-HSPC0500810	1/2	15	20-25	M6x20	2.0x20	1.30
PC-0015-C-HSPC0750810	3/4	20	26-30	M6x20	2.0x20	1.30
PC-0020-C-HSPC1000810	1	25	32-36	M6x20	2.0x20	1.30
PC-0025-C-HSPC1250810	5/4	32	38-45	M6x20	2.0x20	1.30 1.30
PC-0030-C-HSPC1500810	3/2	40	47-51	M6x20	2.0x20	1.30
PC-0035-C-HSPC2000810	2	50	60-64	M6x20	2.0x20	1.90
PC-0040-C-HSPC2500810	5/2	65	74-80	M6x20	2.5x20	1.90
PC-0045-C-HSPC3000810	3	80	87-92	M6x20	2.5x20	1.90
PC-0150-C-HSPC4000810	4	100	113-118	M6x20	2.5x20	1.90
PC-0155-C-HSPC5000810	5	125	138-142	M6x20	2.5x20	1.90
PC-0160-C-HSPC6000810	6	150	159-166	M6x30	2.5x20	

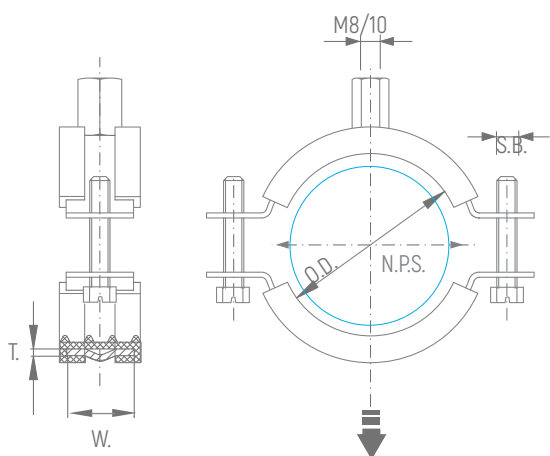
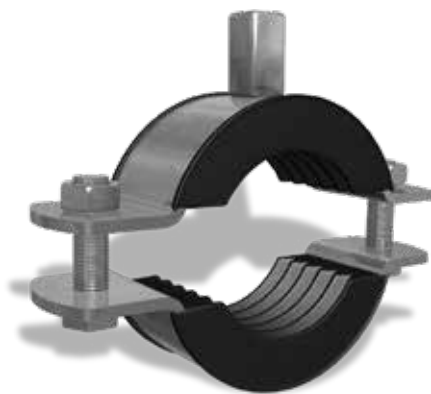


## Split Pipe Clamp with Standard Nut M8 without rubber gasket

- **Material:** Steel S235
- **Service:** Economy option
- **Finish:** Electro Zinc Plated
- **Applications:**
  - Unassembled in plastic bags per 2 sets
  - M6 screw with cross head

	Nominal Pipe Size		Outside Diameter	Side Bolt	Thickness & Width	Load Capacity
Part No.	In	mm	mm	mm	mm	KN
PC-0110-C-SPC05008	1/2	15	20-25	M6x20	2.0x20	1.30
PC-0115-C-SPC07508	3/4	20	26-30	M6x20	2.0x20	1.30
PC-0120-C-SPC10008	1	25	32-36	M6x20	2.0x20	1.30
PC-0125-C-SPC12508	5/4	32	38-45	M6x20	2.0x20	1.30 1.30
PC-0130-C-SPC15008	3/2	40	47-51	M6x20	2.0x20	1.30
PC-0135-C-SPC20008	2	50	60-64	M6x20	2.0x20	1.90
PC-0140-C-SPC25008	5/2	65	74-80	M6x20	2.5x20	1.90
PC-0145-C-SPC30008	3	80	87-92	M6x20	2.5x20	1.90
PC-0150-C-SPC40008	4	100	113-118	M6x20	2.5x20	1.90
PC-0155-C-SPC50008	5	125	138-142	M6x20	2.5x20	1.90
PC-0160-C-SPC60008	6	150	159-166	M6x20	2.5x20	

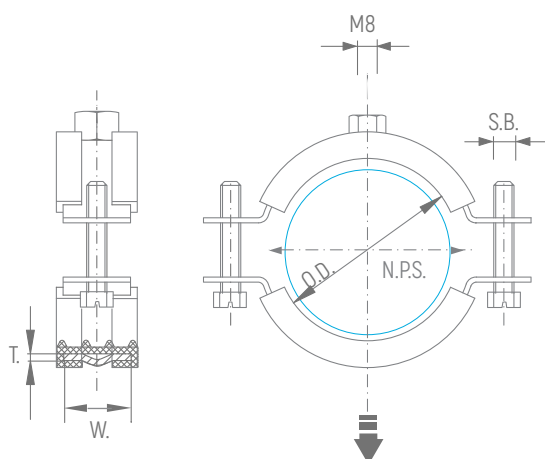
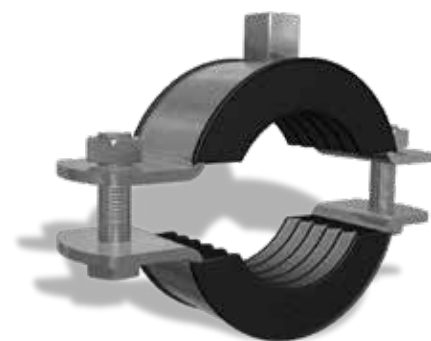
NPS: Nominal Pipe Size - OD: Outside Diameter - SB: Side Bolt - T-W: Thickness - Width



## Split Pipe Clamp with Rubber with Long Nut M8/ M10

- **Material:** Steel S235
- **Service:** EPDM rubber insulation for sound reduction compliant with DIN 4109
- **Finish:** Electro Zinc Plated

Part No.	Nominal Pipe Size		Outside Diameter	Side Bolt	Thickness & Width	Load Capacity
	In	mm	mm	mm	mm	KN
PC-0210-C-HSPCR0500810	1/2	15	20-25	M6x20	2.0x20	1.30
PC-0215-C-HSPCR0750810	3/4	20	26-30	M6x20	2.0x20	1.30
PC-0220-C-HSPCR1000810	1	25	32-36	M6x20	2.0x20	1.30
PC-0225-C-HSPCR1250810	5/4	32	38-45	M6x20	2.0x20	1.30 1.30
PC-0230-C-HSPCR1500810	3/2	40	47-51	M6x20	2.0x20	1.30
PC-0235-C-HSPCR2000810	2	50	60-64	M6x20	2.0x20	1.90
PC-0240-C-HSPCR2500810	5/2	65	74-80	M6x20	2.5x20	1.90
PC-0245-C-HSPCR3000810	3	80	87-92	M6x20	2.5x20	1.90
PC-0250-C-HSPCR4000810	4	100	113-118	M6x20	2.5x20	1.90
PC-0255-C-HSPCR5000810	5	125	138-142	M6x20	2.5x20	1.90
PC-0260-C-HSPCR6000810	6	150	159-166	M6x30	2.5x20	

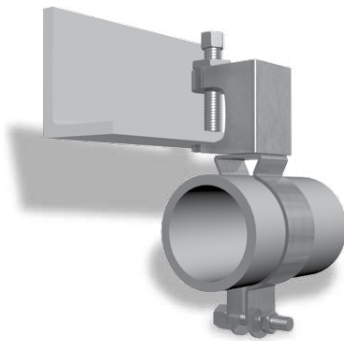


## Split Pipe Clamp with Rubber with Standard Nut M8

- **Material:** Steel S235
- **Service:** EPDM rubber insulation for sound reduction compliant with DIN 4109
- **Finish:** Electro Zinc Plated

Part No.	Nominal Pipe Size		Outside Diameter	Side Bolt	Thickness & Width	Load Capacity
	In	mm	mm	mm	mm	KN
PC-0310-C-SPCR05008	1/2	15	20-25	M6x20	2.0x20	1.30
PC-0315-C-SPCR07508	3/4	20	26-30	M6x20	2.0x20	1.30
PC-0320-C-SPCR10008	1	25	32-36	M6x20	2.0x20	1.30
PC-0325-C-SPCR12508	5/4	32	38-45	M6x20	2.0x20	1.30 1.30
PC-0330-C-SPCR15008	3/2	40	47-51	M6x20	2.0x20	1.30
PC-0335-C-SPCR20008	2	50	60-64	M6x20	2.0x20	1.90
PC-0340-C-SPCR25008	5/2	65	74-80	M6x20	2.5x20	1.90
PC-0345-C-SPCR30008	3	80	87-92	M6x20	2.5x20	1.90
PC-0350-C-SPCR40008	4	100	113-118	M6x20	2.5x20	1.90
PC-0355-C-SPCR50008	5	125	138-142	M6x20	2.5x20	1.90
PC-0360-C-SPCR60008	6	150	159-166	M6x20	2.5x20	

NPS: Nominal Pipe Size - OD: Outside Diameter - SB: Side Bolt - T-W: Thickness - Width



## Omega Conduit & Pipe Clamp

- **Material:** Steel S235
- **Service:** Designed for hanging conduit (rigid or EMT) to beam clamps, available with or without closure bolt
- **Finish:** Electro Zinc Plated

Part No.	Nominal Pipe Size		Outside Diameter		Side Bolt	Thickness & Width	Load Capacity
	In	mm	mm	mm			
PC-0410-C-OMCPC050	1/2	15	20-25	M6x20	2.0x20	1.30	1.30
PC-0415-C-OMCPC075	3/4	20	26-30	M6x20	2.0x20	1.30	1.30
PC-0420-C-OMCPC100	1	25	32-36	M6x20	2.0x20	1.30	1.30
PC-0425-C-OMCPC125	5/4	32	38-45	M6x20	2.0x20	1.30	1.30
PC-0430-C-OMCPC150	3/2	40	47-51	M6x20	2.0x20	1.30	1.30
PC-0435-C-OMCPC200	2	50	60-64	M6x20	2.0x20	1.90	1.90
PC-0440-C-OMCPC250	5/2	65	74-80	M6x20	2.5x20	1.90	1.90
PC-0445-C-OMCPC300	3	80	87-92	M6x20	2.5x20	1.90	1.90
PC-0450-C-OMCPC400	4	100	113-118	M6x20	2.5x20	1.90	1.90
PC-0455-C-OMCPC500	5	125	138-142	M6x20	2.5x20	1.90	1.90
PC-0460-C-OMCPC600	6	150	159-166	M6x20	2.5x20	1.90	1.90

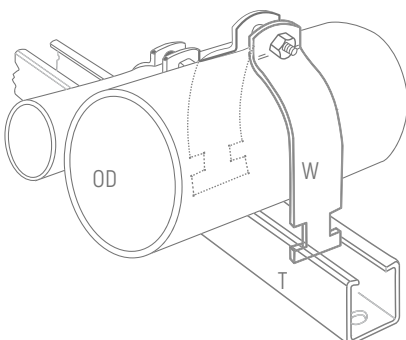


## Channel Clamp

- **Material:** Steel S235
- **Service:** For mounting (rigid or EMT) and steel pipes on C-Channels
- **Finish:** Electro Zinc Plated or Hot-dip Galvanized

Part No.	Nominal Pipe Size		Outside Diameter		Thickness & Width	Load Capacity
	In	mm	mm	mm		
PC-0510-C-CHC050	1/2	15	20	25	1.5x28	1.30
PC-0515-C-CHC075	3/4	20	26	30	1.5x28	1.30
PC-0520-C-CHC100	1	25	32	40	2.0x28	1.30
PC-0525-C-CHC100	5/4	32	42	45	2.0x28	1.30 1.30
PC-0530-C-CHC150	3/2	40	46	50	2.5x28	1.30
PC-0535-C-CHC200	2	50	60	64	2.5x28	1.90
PC-0540-C-CHC250	5/2	65	74	80	2.5x28	1.90
PC-0545-C-CHC300	3	80	86	92	2.8x28	1.90
PC-0550-C-CHC400	4	100	112	118	3.0x28	1.90
PC-0555-C-CHC500	5	125	138	142	3.0x28	1.90
PC-0560-C-CHC600	6	150	160	165	3.0x28	1.90

Pipe Straps for thin metallic wall conduits (EMT)  
(Electrical Metallic Tubing)



NPS: Nominal Pipe Size - OD: Outside Diameter - CB: Closure Bolt - T-W: Thickness - Width

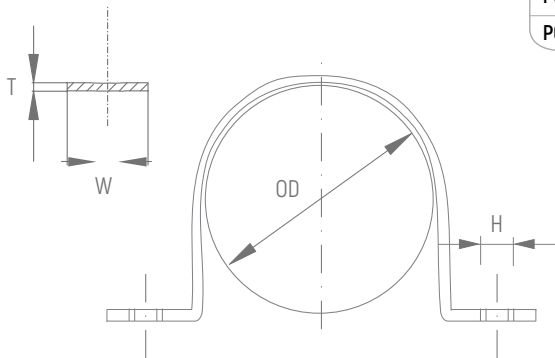


## Pipe Strap

### Two-Hole Pipe Strap/ U-Clip

- **Material:** Steel S235
- **Service:** Designed for supporting pipe runs on walls and on C-Channels
- **Finish:** Electro Zinc Plated

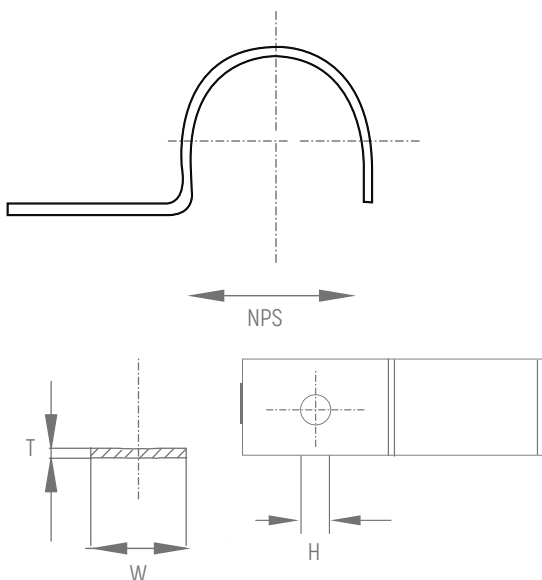
Part No.	Nominal Pipe Size		Outside Diameter	Thickness & Width	Hole Size	Load Capacity
	In	mm	mm	mm	mm	KN
PC-0510-C-PSUC050	1/2	15	22	1.5x25	6	1.30
PC-0515-C-PSUC075	3/4	20	28	1.5x25	6	1.30
PC-0520-C-PSUC100	1	25	35	1.5x25	6	1.30
PC-0525-C-PSUC150	5/4	32	42	1.5x25	6	1.30
PC-0530-C-PSUC200	3/2	40	54	1.5x25	6	1.30
PC-0535-C-PSUC250	2	50	60	2.0x30	8	1.90
PC-0540-C-PSUC300	5/2	65	75	2.0x30	8	1.90
PC-0545-C-PSUC350	3	80	90	2.0x40	8	1.90



## One-Hole Pipe Strap <Snap Type>

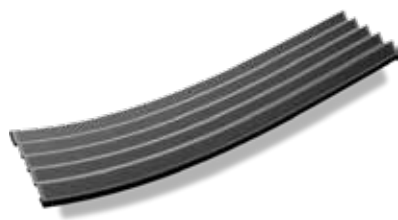
- **Material:** Steel S235
  - **Service:** Designed for supporting standard conduits, cable and steel pipes on walls or sides of beams or on C-Channels
  - **Finish:** Electro Zinc Plated
- Not recommended for use horizontally on ceilings, bottoms of beams and similar installations since the factor of safety is greatly reduced when so used

Part No.	Nominal Pipe Size		Thickness & Width	Hole Size	Load Capacity
	In	mm	mm	mm	KN
PC-0610-C-PSST050	1/2	15	1.0x25	6	0.40
PC-0615-C-PSST075	3/4	20	1.0x25	6	0.40
PC-0620-C-PSST100	1	25	1.0x25	6	0.40
PC-0625-C-PSST150	5/4	32	1.5x25	6	0.40
PC-0630-C-PSST200	3/2	40	1.5x25	6	0.40
PC-0635-C-PSST250	2	50	1.5x25	8	0.40
PC-0640-C-PSST300	5/2	65	2.0x25	8	0.45
PC-0645-C-PSST350	3	80	2.5x25	8	0.45



NPS: Nominal Pipe Size - OD: Outside Diameter - T-W: Thickness - Width  
H: Hole Size





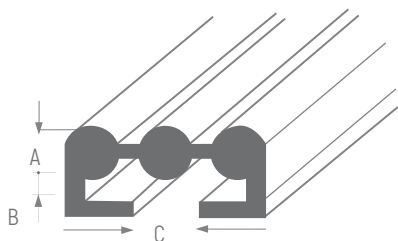
Rubber DIN 4109

## Noise Suppression Profile

SR noise-suppression strip for insertion in clamps and hangers

- **Material:** EPDM. Rubber
- **Load Data:** At normal frequency and pressure range, noise suppression 20 dB(A) & the temperature-resistant from -40 °C to + 100 °C
- **Electrical values:** Specific resistance:  $2 \times 10^9$  M ohm  $\text{cm}^2$  & the Surface resistance:  $2 \times 10^9$  M ohm

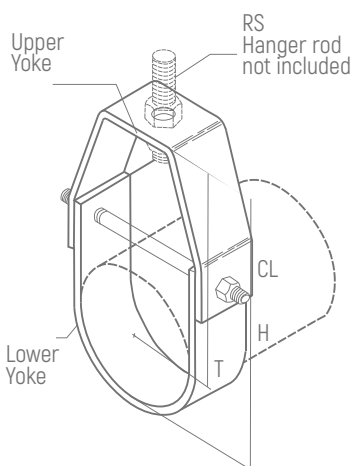
Part No.	Size	Dimension		
	mm	A	B	C
PC-0005-C-RNS	20x6	6	3	20



## Clevis Hanger

- **Material:** Steel S235
- **Finish:** Electro Zinc Plated or Hot-dip Galvanized
- **Application:** Designed for suspending pipes

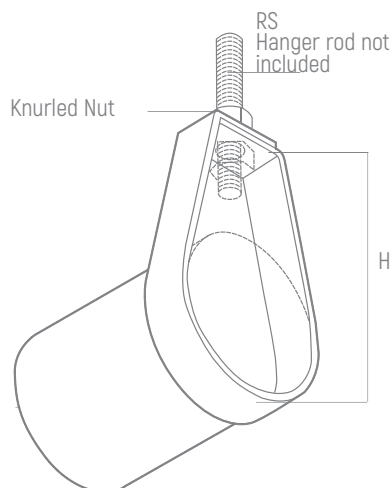
Part No.	Nominal Pipe Size		Rod Size	Center Line	Height	Transverse	Thickness & Width	Load Capacity
	In	mm	mm	mm	mm	mm	mm	KN
PC-0710-C-CLH050	1/2	15	M10	44	55	6	3x25	2.70
PC-0715-C-CLH075	3/4	20	M10	54	68	6	3x25	2.70
PC-0720-C-CLH100	1	25	M10	58	75	6	3x25	2.70
PC-0725-C-CLH100	5/4	32	M10	80	100	6	3x25	2.70
PC-0730-C-CLH150	3/2	40	M10	81	106	6	3x25	2.70
PC-0735-C-CLH200	2	50	M10	86	117	6	3x25	2.70
PC-0740-C-CLH250	5/2	65	M12	106	144	8	3x30	5.00
PC-0745-C-CLH300	3	80	M12	127	172	8	3x30	5.00
PC-0750-C-CLH400	4	100	M16	141	199	10	4x30	6.30
PC-0755-C-CLH500	5	125	M16	159	229	10	4x30	6.30
PC-0760-C-CLH600	6	150	M20	174	257	12	4x40	8.50



CL: Center Line - H: Height - T: Transverse



Swivel Hangers with rubber gaskets can be supplied also.



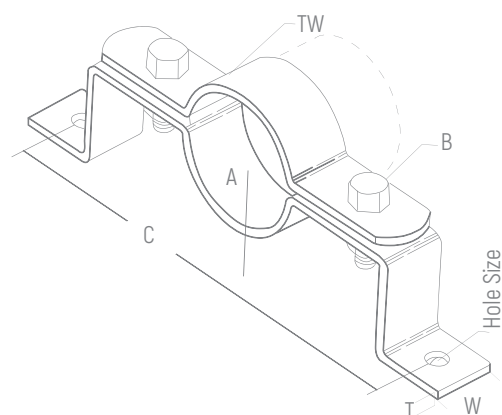
## Adjustable Band Hanger

- **Material:** Steel S235
- **Finish:** Electro Zinc Plated or Hot-dip Galvanized
- **Application:** Designed for suspending non-insulated stationary pipe line. Knurled nut can be supplied in 8 to 10 mm diameter

Part No.	Nominal Pipe Size		Rod Size	Height	Thickness & Width	Load Capacity
	In	mm	mm	mm	mm	KN
PC-0810-C-ADBH05008	1/2	15	M8	54	1.0x25	0.30
PC-0815-C-ADBH07508	3/4	20	M8	64	1.0x25	0.30
PC-0820-C-ADBH10008	1	25	M8	72	1.2x25	0.30
PC-0825-C-ADBH12508	5/4	32	M8	83	1.2x25	0.30
PC-0830-C-ADBH15008	3/2	40	M8	96	1.2x25	0.30
PC-0835-C-ADBH20008	2	50	M8	113	1.2x25	0.30
PC-0840-C-ADBH25010	5/2	65	M10	130	1.2x25	0.60
PC-0845-C-ADBH30010	3	80	M10	156	1.2x25	0.60
PC-0850-C-ADBH40010	4	100	M10	215	1.2x25	0.60
PC-0855-C-ADBH50010	5	125	M10	242	2.0x25	1.10
PC-0860-C-ADBH60010	6	150	M10	279	2.0x25	1.10

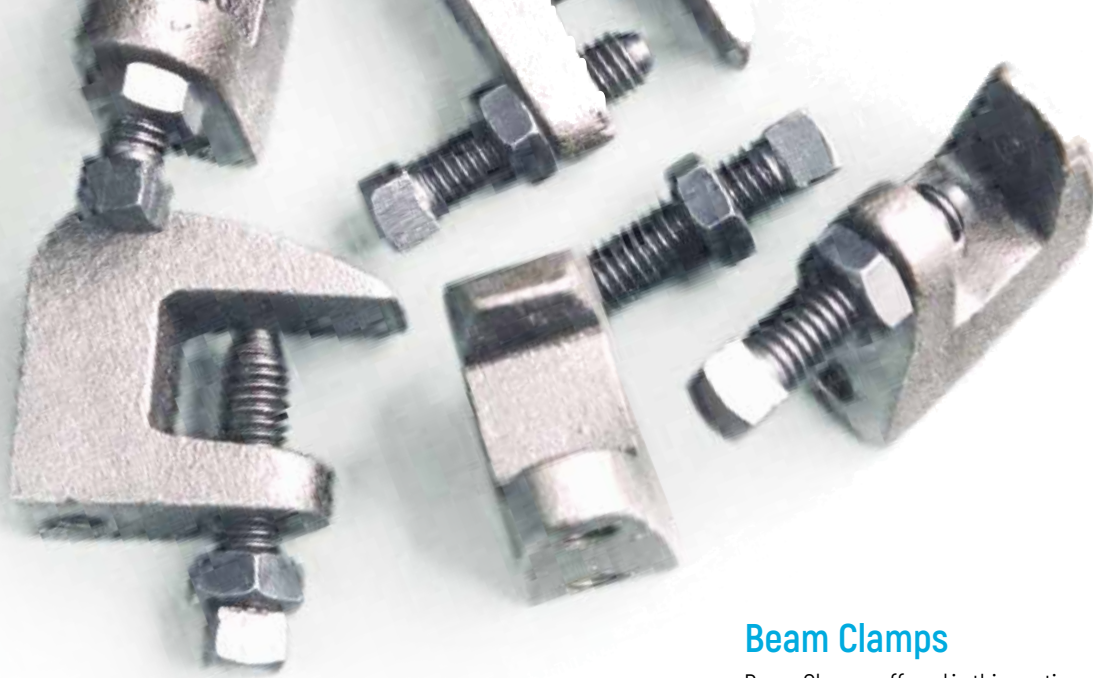
## Offset Pipe Clamp

- **Material:** Steel S235
- **Service:** Designed for supporting and stabilizing vertical pipe runs
- **Finish:** Electro Zinc Plated or Hot-dip Galvanized



Part No.	Nominal Pipe Size		A	B	C	Hole Size	Thickness & Width	Load Capacity
	In	mm	mm	mm	mm	mm	mm	KN
PC-0910-C-OFFP050	1/2	15	60	8x40	150	10	3x30	0.90
PC-0915-C-OFFP075	3/4	20	60	8x40	175	10	3x30	0.90
PC-0920-C-OFFP100	1	25	65	8x40	190	10	3x30	0.90
PC-0925-C-OFFP125	5/4	32	75	8x40	200	10	3x30	0.90
PC-0930-C-OFFP200	2	50	80	10x50	225	12	4.5x30	1.20
PC-0935-C-OFFP250	5/2	65	85	10x50	250	12	4.5x30	1.20
PC-0940-C-OFFP300	3	80	95	10x50	275	12	4.5x30	1.20
PC-0945-C-OFFP400	4	100	105	12x50	300	14	5x40	1.80
PC-0950-C-OFFP600	6	150	130	12x50	400	14	5x40	1.80
PC-0955-C-OFFP800	8	200	160	12x50	450	14	5x40	1.80

T-W: Thickness - Width



## Beam Clamps

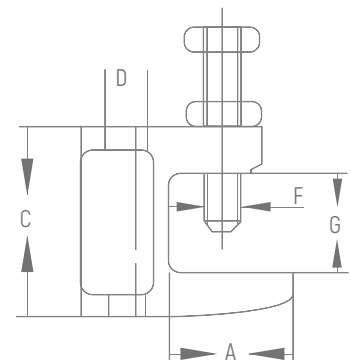
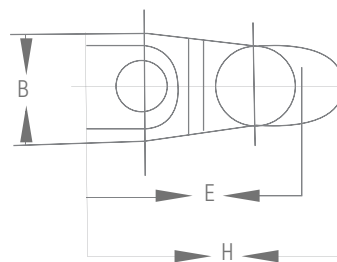
Beam Clamps offered in this section are designed to provide attachment of hanger rods to structures without drilling or welding. A wide range of types and sizes are available for various applications.



## C-Clamp

- **Material:** Malleable Cast Iron Zinc plated

Casting tolerance according to DIN 1684 GTA/17 with hexagon head screw DIN 933 8.8, threaded end with cup point according to EN ISO 4753 and locknut DIN 439 for sprinkler systems, heating, ventilation and air conditioning, acoustic tubes and sanitary installation machines and steel constructions.  
Safety Factor



	A	B	C	D	E	F	G	H	Load Capacity
Part No.	mm	mm	mm	mm	mm	mm	mm	mm	KN
PC-1105-C-MCC06	20	19	35	M6 Ø7	35	M8	17	36	1.1
PC-1110-C-MCC08	21	19	35	M8 Ø9	35	M8	18	38	1.2
PC-1115-C-MCC08	29	21	45	M8 Ø9	41	M10	23	50	2.5
PC-1120-C-MCC10	23	21	42	M10 Ø11	41	M10	20	44	2.5
PC-1125-C-MCC12	35	23.5	54	M12 Ø13	48	M10	26	58	3.5
PC-1130-C-MCC16	30	29.5	58	M16 Ø17	55.5	M12	28	58.3	5.5

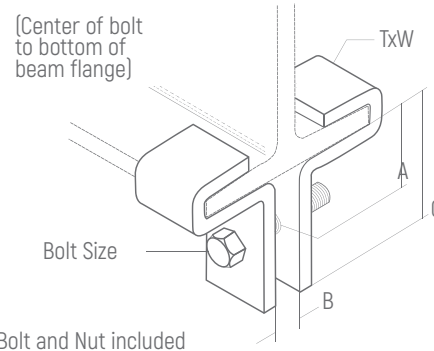
The Load Data the Load data includes a safety factor of 4, (safety factor = ratio of ultimate load divided to the design Load : Safety factor 4:1



Part No. PC-1160-C-SBC00530

## Steel Beam Clamp Open

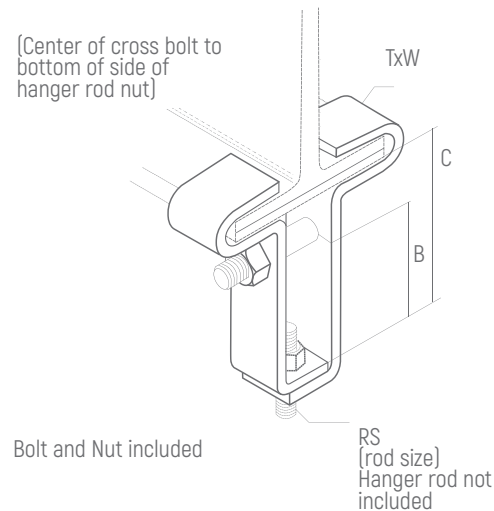
- **Material:** Steel S235
- **Service:** Designed for attaching hanger rods to the top or bottom flange of a beam
- **Finish:** Hot-dip Galvanized
- **Ordering:** Specify flange width and thickness
- **Steel Size:** 5X30 mm



Part No. PC-1170-C-SBCC0530

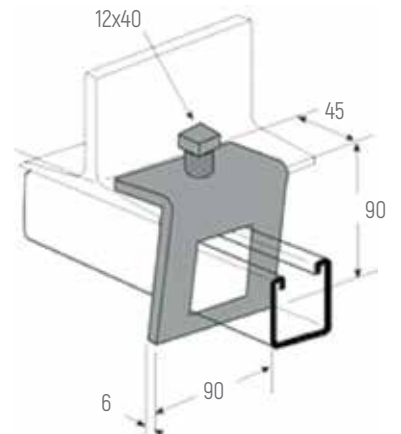
## Steel Beam Clamp Closed

- **Material:** Steel S235
- **Service:** Designed for attaching hanger rods to the top or bottom flange of a beam
- **Finish:** Hot-dip Galvanized
- **Ordering:** Specify flange width and thickness
- **Steel Size:** 5X30 mm, 5X40 mm



## Window Beam Clamp

- **Material:** Steel S235
- **Service:** Designed for attaching C-Channel to a top or bottom flange of a beam
- **Finish:** Electro Zinc Plated
- **Steel Size:** 6x90 mm



**SUPPORT  
SYSTEM**

## Channel

SFSP's metal framing channel is cold formed on modern rolling machines from low carbon steel manufactured according to BS 6946:1988. A continuous slot provides the ability to make attachments at any point.

## Lengths

Standard length: 3000mm with  $\pm 3.2$ mm length tolerance.  
Custom lengths vv available upon request.

## Finishes

Standard Finishes: Pre-Galvanized finish (ASTM A653M coating G90 and G60). Hot Dip Galvanized after fabrication (ASTM A123 or BS EN ISO1461:2009). Other custom coatings are available upon request.

# Metal Framing Channels

## Selection Chart

Part No	Channel Dimensions		Thickness
	Height "H"	Width "W"	
CCH - 220/221	21.0 mm	41.0 mm	1.5 mm
CCH - 240/241	41.0 mm	41.0 mm	1.5 mm
CCH - 260/261	25.0 mm	50.0 mm	1.5 mm
CCH - 320/321	21.0 mm	41.0 mm	2.0 mm
CCH - 340/341	41.0 mm	41.0 mm	2.0 mm
CCH - 360/361	25.0 mm	50.0 mm	2.0 mm
CCH - 420/421	21.0 mm	41.0 mm	2.5 mm
CCH - 440/441	41.0 mm	41.0 mm	2.5 mm
CCH - 460/461	25.0 mm	50.0 mm	2.5 mm

For Toothed Channel add "T" after the Part no. ex: CCH-220T

CCH 320

3

2

0

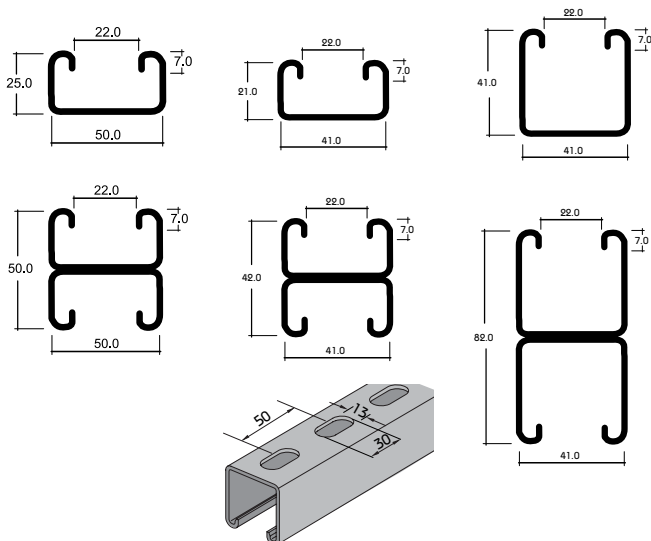
T

**Material Thickness**  
2 for 1.5 mm  
3 for 2.0 mm  
4 for 2.5 mm

**Size**  
2 - 21/41 mm  
4 - 41/41 mm  
6- 25/50 mm

**Channel Patterns**  
0 - PT  
1 - ST  
2 - B2B

**Toothed channel**



# Channel Hole Patterns

## PT Type Channel

Part No	Thick. mm.	Height "H"
CCH-220	1.5	21.0
CCH-240	1.5	41.0
CCH-260	1.5	25.0
CCH-320	2.0	21.0
CCH-340	2.0	41.0
CCH-360	2.0	25.0
CCH-420	2.5	21.0
CCH-440	2.5	41.0
CCH-460	2.5	25.0

PT Plain Type



## ST Type Channel

Part No	Thick. mm.	Height "H"
CCH-221	1.5	21.0
CCH-241	1.5	41.0
CCH-261	1.5	25.0
CCH-321	2.0	21.0
CCH-341	2.0	41.0
CCH-361	2.0	25.0
CCH-421	2.5	21.0
CCH-441	2.5	41.0
CCH-461	2.5	25.0

ST Slotted Type



## B2B Type Channel

Part No	Thick. mm.	Height "H"
CCH-222	1.5	42.0
CCH-242	1.5	82.0
CCH-262	1.5	50.0
CCH-322	2.0	42.0
CCH-342	2.0	82.0
CCH-362	2.0	50.0
CCH-422	2.5	42.0
CCH-442	2.5	82.0
CCH-462	2.5	50.0

B2B Type



## Toothed channel type

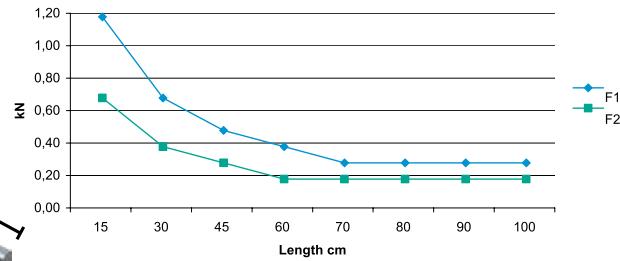
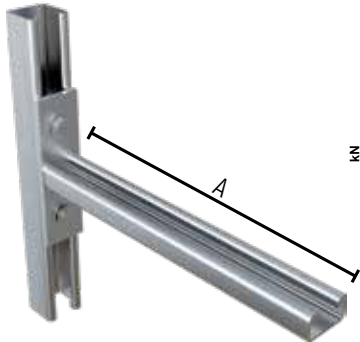


For Toothed Channel add "T" after the Part no.  
ex: CCH-220T

# Cantilever Arm Bracket

## Cantilever Arm Brackets - SCA

### CCH421 41x21x2.5

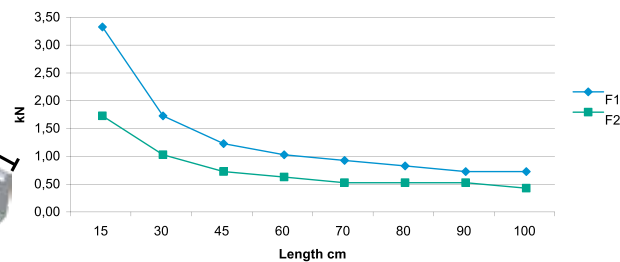
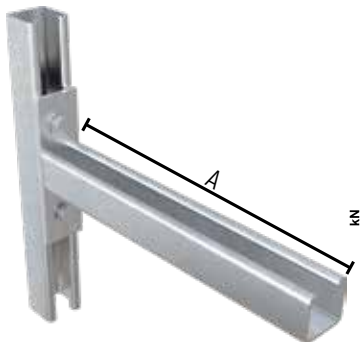


Length A (mm)	Allowable Load		
	F <sub>1</sub> *	F <sub>2</sub> *	F <sub>2</sub> **
150	1.10	0.60	3.10
300	0.60	0.30	3.10
450	0.40	0.20	3.10
600	0.30	0.10	3.10
700	0.20	0.10	3.10
800	0.20	0.10	3.10
900	0.20	0.10	3.10
1000	0.20	0.10	3.10

**Base plate** : height (h) x width (b) x thickness (t)  
100 50 8

- In the case of concrete support frame, use anchor M10
- In the case of concrete C-Channel frame, Hex bolt M8 .

\*\* Connection force (pull-out force) : 3.10 (kN)



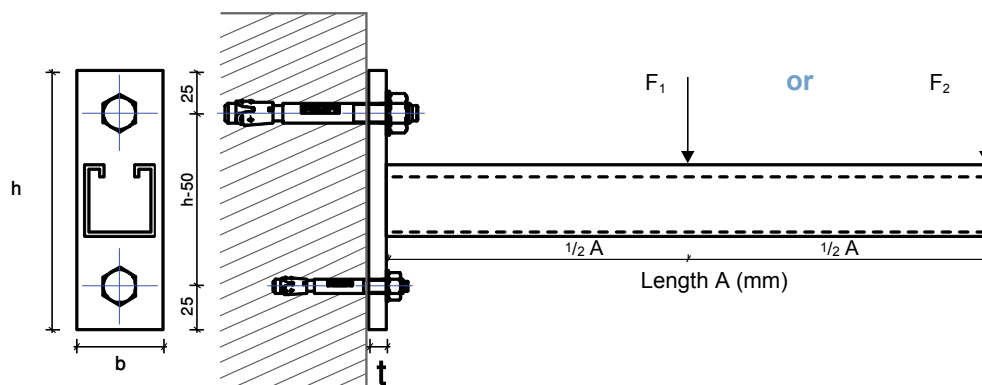
Length A (mm)	Allowable Load		
	F <sub>1</sub> *	F <sub>2</sub> *	F <sub>2</sub> **
150	3.10	1.50	7.50
300	1.50	0.80	7.50
450	1.00	0.50	7.50
600	0.80	0.40	7.50
700	0.70	0.30	7.50
800	0.60	0.30	7.50
900	0.50	0.30	7.50
1000	0.50	0.20	7.50

**Base plate** : height (h) x width (b) x thickness (t)  
140 50 10

- In the case of concrete support frame, use anchor M16 .
- In the case of concrete C-Channel frame, Hex bolt M8 .

\*\* Connection force (pull-out force) : 7.50 (kN)

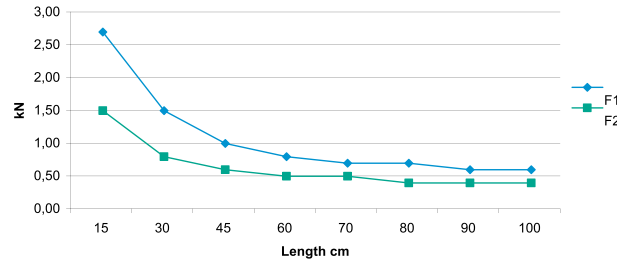
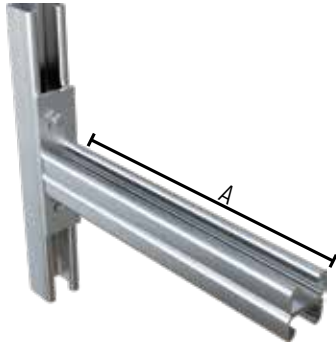
\* Given Loads are always in [kN] " Allowable characteristic live load "



# Cantilever Arm Bracket

## Cantilever Arm Brackets - SCA

### CCH422 41x21x2.5 B2B



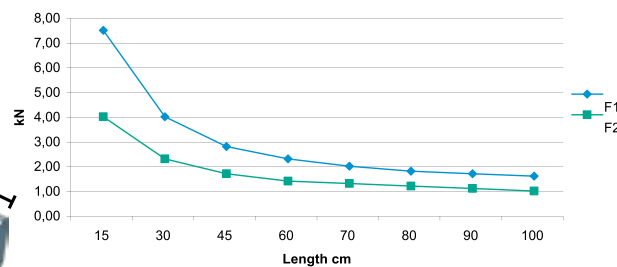
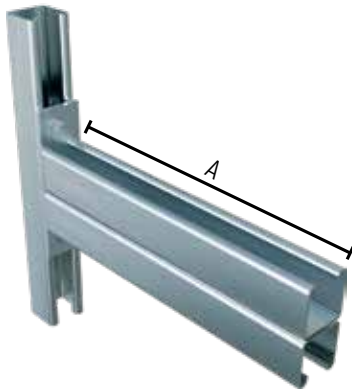
Length A (mm)	Allowable Load		
	F <sub>1</sub> *	F <sub>2</sub> *	F <sub>2</sub> **
150	2.50	1.30	4.80
300	1.30	0.60	4.80
450	0.80	0.40	4.80
600	0.60	0.30	4.80
700	0.50	0.30	4.80
800	0.50	0.20	4.80
900	0.40	0.20	4.80
1000	0.40	0.20	4.80

**Base plate** : height (h) x width (b) x thickness (t)  
140      50      10

- In the case of concrete support frame, use anchor M12.
- In the case of concrete C-Channel frame, Hexbolt M8.

\*\* Connection force (pull-out force) : 4,8 [kN]

### CCH442 41x41x2.5 B2B



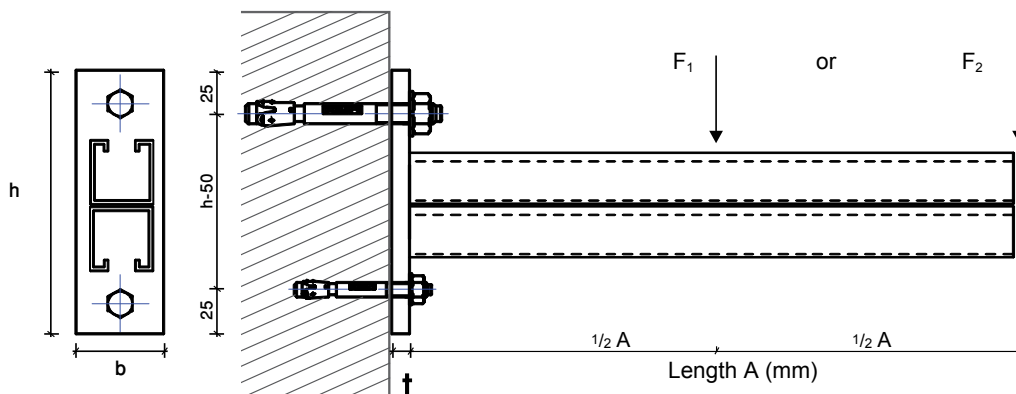
Length A (mm)	Allowable Load		
	F <sub>1</sub> *	F <sub>2</sub> *	F <sub>2</sub> **
150	7.00	3.50	8.30
300	3.50	1.80	8.30
450	2.30	1.20	8.30
600	1.80	0.90	8.30
700	1.50	0.80	8.30
800	1.30	0.70	8.30
900	1.20	0.60	8.30
1000	1.10	0.50	8.30

**Base plate** : height (h) x width (b) x thickness (t)  
180      60      12

- In the case of concrete support frame, use anchor M16.
- In the case of concrete C-Channel frame, Hex bolt M10 .

\*\* Connection force (pull-out force) : 8,30 [kN]

\* Given Loads are always in [kN] " Allowable characteristic live load "





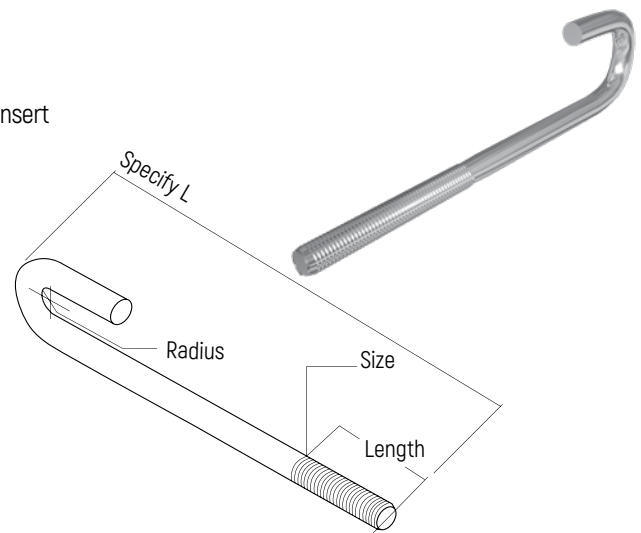
**THREADED  
ACCESSORIES**

## Anchor Bolts

### J - Bolt

- **Material:** Steel S235
- **Service:** Designed for attaching to beam flange or purlin and as a concrete insert
- **Finish:** Electro Zinc Plated

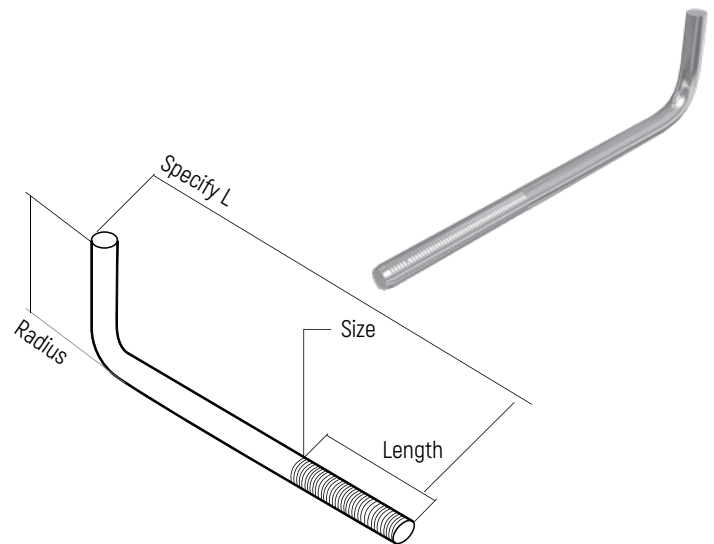
Part No.	Thread			
	Size	Length	Radius	Load Capacity
	mm	mm	mm	KN
PC-1220-C-JB1050	10	50	13.0	1.00
PC-1225-C-JB1250	12	50	16.0	1.90
PC-1230-C-JB1660	16	60	19.0	3.10
PC-1235-C-JB2060	20	60	22.1	4.60
PC-1240-C-JB2260	22	60	25.1	6.50
PC-1245-C-JB2575	25	75	35.0	7.00



### L - Bolt

- **Material:** Steel S235
- **Service:** Designed for use as an anchor embedded in concrete
- **Finish:** Electro Zinc Plated

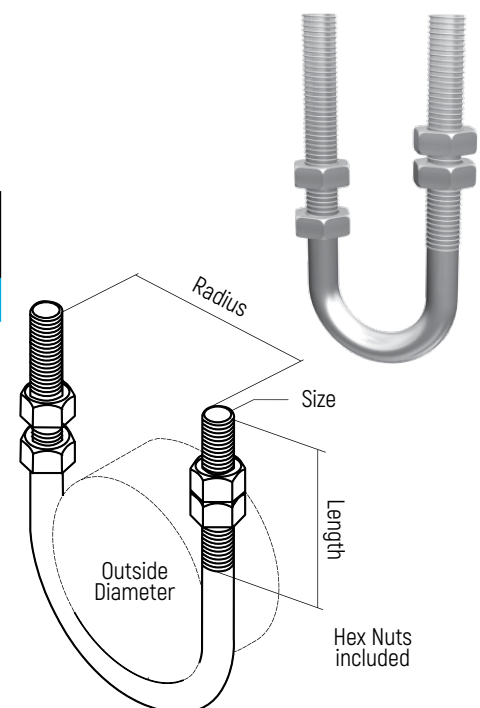
Part No.	Thread			
	Size	Length	Radius	Load Capacity
	mm	mm	mm	KN
PC-1320-C-AB1050	10	50	50	1.00
PC-1325-C-AB1250	12	50	60	1.90
PC-1330-C-AB1660	16	60	70	3.10
PC-1335-C-AB2060	20	60	75	4.60
PC-1340-C-AB2260	22	60	90	6.50
PC-1345-C-AB2575	25	75	35.0	7.00



### Light Duty U - Bolt

- **Material:** Steel S235
- **Finish:** Electro Zinc Plated
- **Application:** Designed as a support, guide, or anchor for light - duty pipes

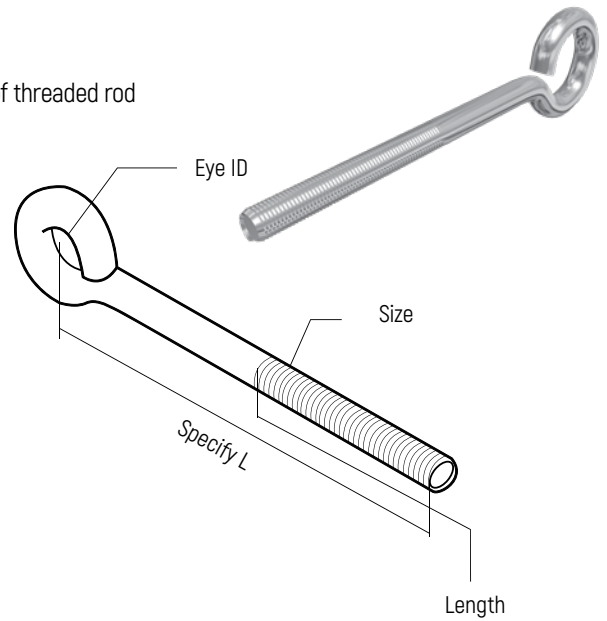
Part No.	Nominal Pipe Size		Thread		Outside Diameter	Load Capacity
	In	mm	Size	Length		
			mm	mm		
PC-1410-C-LDUB05006	1/2	15	6	20	22	0.40
PC-1415-C-LDUB07506	3/4	20	6	30	28	0.40
PC-1420-C-LDUB10006	1	25	6	30	35	0.40
PC-1425-C-LDUB12506	5/4	32	6	30	43	0.40
PC-1430-C-LDUB15006	3/2	40	6	35	50	0.40
PC-1435-C-LDUB20006	2	50	6	35	61	0.40
PC-1440-C-LDUB25008	5/2	65	8	35	78	0.90
PC-1445-C-LDUB30008	3	80	8	40	92	0.90
PC-1450-C-LDUB40010	4	100	10	50	116	1.00
PC-1455-C-LDUB60012	6	150	12	50	170	2.00



## Eye Rod

- **Material:** Steel S235
- **Finish:** Electro Zinc Plated
- **Application:** Designed for use in hanger supports to eliminate possible bending of threaded rod

Part No.	Thread		Eye	Load Capacity
	Size	Length		
Part No.	mm	mm	mm	KN
PC-1510-C-ERD0608	6	40	8	0.50
PC-1515-C-ERD0810	8	40	10	0.80
PC-1520-C-ERD1012	10	50	12	1.00
PC-1525-C-ERD1216	12	50	16	2.00
PC-1530-C-ERD1620	16	50	20	3.10
PC-1535-C-ERD2022	20	75	22	4.70
PC-1540-C-ERD2225	22	90	25	6.50
PC-1545-C-ERD2528	25	100	28	8.60
PC-1550-C-ERD2830	28	115	30	10.80
PC-1555-C-ERD3034	30	130	34	14.00

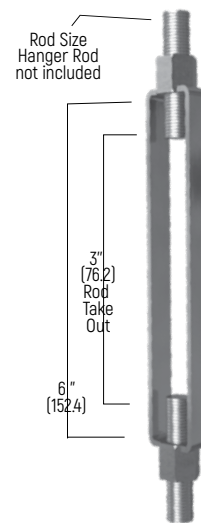


## Buckle

### Turnbuckle

- **Material:** Steel S235
- **Finish:** Electro Zinc Plated

Part No.	Rod Size
	mm
PC-1605-C-TBKL06	6
PC-1610-C-TBKL08	8
PC-1615-C-TBKL10	10
PC-1620-C-TBKL12	12
PC-1625-C-TBKL16	16
PC-1630-C-TBKL20	20
PC-1635-C-TBKL22	22
PC-1640-C-TBKL25	25
PC-1645-C-TBKL25	25
PC-1650-C-TBKL25	25
PC-1655-C-TBKL25	25
PC-1660-C-TBKL25	25



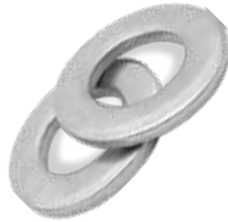
- Available in Zinc Plated Thread & Stainless Steel Thread

# Framing Systems

## ASTM F436

### Washers (SRW) | DIN 125 | ASTM F436

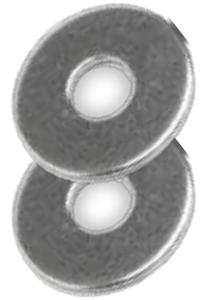
Zinc Plated	Stainless Steel	D	d	S
		(mm)	(mm)	(mm)
M6	M6	12	6.4	1.6
M8	M8	16	8.4	1.6
M10	M10	21	10.5	2
M12	M12	24	13	2.5
M16	M16	30	17	3
M18	M18	34	19	3.2
M20	M20	39	20.5	3.6



## Round Washers DIN 440, DIN 9021

### Washers (SRW) | DIN 440 | DIN 9021

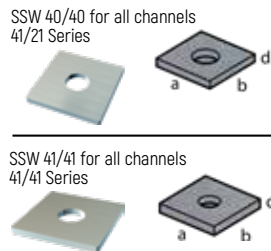
DIN	Zinc Plated	Stainless Steel	D	d	S
			(mm)	(mm)	(mm)
440	M6		22	6.6	2
9021	M8	M8	24	8.4	2
9021	M10	M10	30	10.5	2.5
440	M12		45	13.5	4
9021	M12	M12	37	13	3
9021	M16	M16	50	17	3



## Square Washers SSW

### Square Washers (SSW)

H.D. Galvanized Bolt	Stainless Steel Bolt	a x b x d
		(mm)
M8	M10	40 x 40 x (4-5-6)
M10	M12	40 x 40 x (4-5-6)
M12	M16	40 x 40 x (4-5-6)



## Fully Threaded Rods Grade 4.6 DIN 975 ASTM A 36, A193

### Threaded Rod (STR) - DIN 975 - ASTM A36

Zinc Plated Thread	Length	Load cap.
	(mm)	(kN)
M6	2000/3000	2.2
M8	2000/3000	4.0
M10	2000/3000	6.4
M12	2000/3000	12.9
M16	2000/3000	17.3
M18	2000	22.0
M20	2000	27.0



## Round Head Machine Screws

### Round Head (SRH) | DIN 7985

Zinc Plated Thread	Length	d
	(mm)	(mm)
M6	30-40	6.0
M8	30-40	8.0
M10	20-60	10.0



## Coupler Sleeves Rounded

### Coupler Sleeves (SCS)

Electro-plated Thread	Stainless Steel Thread	D	L	Load Capacity
		(mm)	(mm)	(kN)
M6	M6	10/10	15	2.2
M8	M8	12/14	20	4.0
M10	M10	13/16	25	6.4
M12	M12	16/20	30	9.3
M16	M16	21/25	40	17.3
M20	M20	26/32	50	27.0



## Roofing Bolts

### Roofing Bolts (SRB)

- Materials : low carbon steel , carbon steel
- Steel S235 , grade 4.6 , 4.8 and 8.8
- Surfaces : plain , black and zinc plated
- Length = X (mm) – Y (mm)

Thread Size	M4 x - y	M5 x - y	M6 x - y	M8 x - y
	(mm)	(mm)	(mm)	(mm)
Length	10 - 50	10 - 80	12 - 120	16 - 150



## Carriage Bolts with Nut Below Head DIN 603

### Carriage Bolts (STC)

Zinc Plated	H.D. Galvanized Grade 4.6	Head	Head	Square Width	Square Depth
(E)	(E)	(A) mm	(H) mm	(O) mm	(P) mm
M5	M5	12.0	3.0	5.0	3.2
M6	M6	15.1	3.70	6.40	4.0
M8	M8	18.3	4.50	8.23	4.75
M10	M10	21.44	5.30	9.86	5.56
M16	M16	34.14	8.74	16.3	8.74



## Hexagon Nuts DIN 934, DIN EN 24032, ASTM A 563

### Hexagon nut (SHN) | DIN 934 or ISO 4032 (= DIN EN 24032) | ASTM A563

Zinc Plated Thread	Stainless Steel Thread	S/m DIN (mm)	S/m ISO (mm)	e (mm)
M6	M6	10/5	10/6	11.5
M8	M8	13/6.5	13/7.5	15.0
M10	M10	17/8	16/9.5	19.6
M12	M12	19/10	18/12	21.9
M16	M16	24/13	24/15.5	27.7
M18	M18	26/16	26/16	22.0
M20	M20	30/18	29/20.5	27.0



## Hexagonal Rod Coupler Grade 8.8 ASTM a 563

### Hexagonal Rod Coupler with view hole (SHR)

Electro-plated Thread	Stainless Steel Thread	D (mm)	L (mm)	Load capacity (kN)
M10	M10	13	40	6.4
M12	M12	17	40	9.3
M16	M16	22	50	17.3
M 18	M 18	23	60	22.0
M 20	M 20	25	70	27.0
M18	M18	26/16	26/16	22.0
M20	M20	30/18	29/20.5	27.0



## DIN 933, DIN 24017, ASTM A307, A449

### Hex Head Bolt (SHB) | DIN 933 or EN 24017 ASTM A307, A449 (without nut)

Zinc Plated Dimension	Stainless Steel Dimension	S DIN (mm)	S EN (mm)	M 16 x 40	M 16 x 40	24	24
		(mm)	(mm)	M 16 x 60	M 16 x 60		
M 6 x 12		10	10	M 16 x 90	M 16 x 90	27	26
M 6 x 25				M 18 x 40	M 18 x 40		
M 8 x 25	M 8 x 25			M 18 x 50	M 18 x 50		
M 8 x 40		13	13	M 18 x 60	M 18 x 60		
M 10 x 20		17	16	M 18 x 80	M 18 x 80		
M 10 x 30	M 10 x 30			M 20 x 40	M 20 x 40	32	32
M 10 x 45	M 10 x 45			M 20 x 50	M 20 x 50		
M 10 x 60				M 20 x 60	M 20 x 60		
M 10 x 70				M 20 x 80	M 20 x 80		
M 12 x 22		19	18				
M 12 x 25	M 12 x 25						
M 12 x 30	M 12 x 30						
M 12 x 40	M 12 x 40						
M 12 x 50							
M 12 x 60	M 12 x 60						
M 12 x 80	M 12 x 80						
M 12 x 90							



**TECHNICAL  
DATA**

## Rigid Steel Conduit (Heavy Wall Conduit)

Nominal Conduit Size		Outside Diameter		Nominal Inside Diameter		Minimum Weight with Couplings Attached	
In	mm	In	mm	In	mm	Lbs/100 Ft.	Kg/10 m
3/8	10	0.67	17.1	0.49	12.5	51.5	7.8
1/2	15	0.84	21.3	0.63	16.0	79.0	11.6
3/4	20	1.05	26.7	0.83	21.3	105.0	15.8
1	25	1.31	33.4	1.06	27.0	153.0	23.1
5/4	32	1.66	42.2	1.39	35.4	201.0	30.4
3/2	40	1.90	48.3	1.62	41.3	249.0	37.6
2	50	2.37	60.3	2.08	52.9	332.0	50.2
5/2	65	2.87	73.0	2.48	63.2	527.0	79.7
3	80	3.50	88.9	3.09	78.5	682.6	103.2
7/2	90	4.00	101.6	3.57	90.7	831.0	125.6
4	100	4.50	114.3	4.05	102.9	972.3	147.0
5	125	5.56	141.3	5.07	128.9	1313.6	198.6
6	150	6.62	168.3	6.09	154.8	1745.3	263.9

## Intermediate Metal Conduit (IMC)

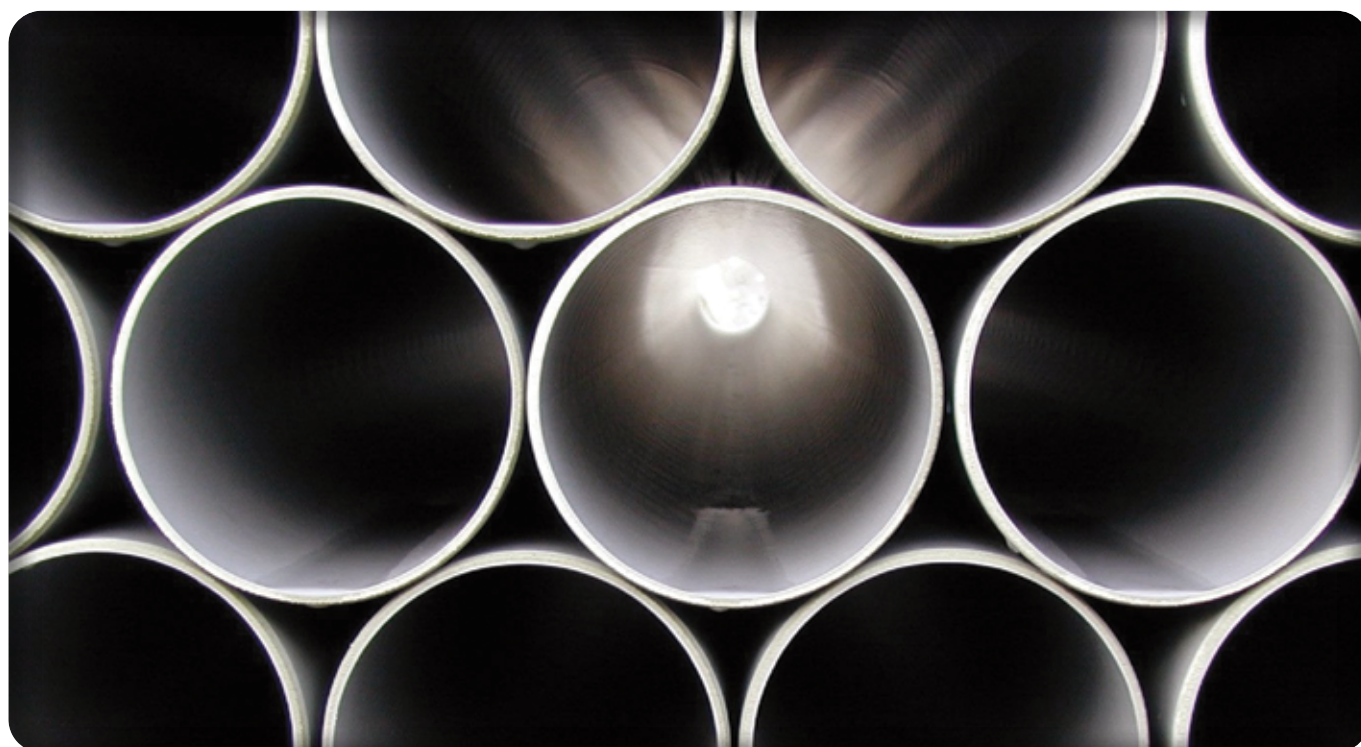
Nominal Conduit Size		Outside Diameter		Nominal Inside Diameter		Minimum Weight with Couplings Attached	
In	mm	In	mm	In	mm	Lbs/100 Ft.	Kg/10 m
1/2	15	0.81	20.7	0.74	18.9	60.0	0.7
3/4	20	1.02	26.1	0.95	24.2	82.0	12.4
1	25	1.29	32.7	1.20	30.6	116.0	17.5
5/4	32	1.63	41.6	1.55	38.9	150.0	22.6
3/2	40	1.88	47.8	1.79	45.5	182.0	27.3
2	50	2.36	59.9	2.26	57.5	242.0	36.5
5/2	65	2.85	72.5	2.72	69.2	401.0	60.6
3	80	3.47	88.3	3.34	85.0	493.0	74.5
7/2	90	3.97	100.8	3.84	97.5	573.0	86.6
4	100	4.46	113.4	4.33	110.1	638.0	96.4

Conduit Size		Maximum Support Span	
In	mm	Feet	Meters
1	25	12	3.60
5/4 - 3/2	32 - 40	14	4.30
2 - 5/2	50 - 65	16	4.90
3 - 6	80 - 150	20	6.00

Conduit plus weight of heaviest conductor combination as specified by the National Electrical Code. Rigid and Intermediate Metal Conduit shall be supported at least every 10 feet (3.05m) and within 3 feet (914mm) of each outlet box, junction box, cabinet, or fitting. Except for straight runs of conduit connected with couplings which may be supported in accordance with NEC Article 345 and 346, provided such supports prevent transmission of stresses to termination where conduit is deflected between supports.

## Pipe Comparison Data

Nominal Pipe Size		Outside Diameter	
In	mm	DIN(mm)	ISO(mm)
3/8	10	14	17.2
1/2	15	20	21.3
3/4	20	25	26.9
1	25	30	33.7
5/4	32	38	42.4
3/2	40	44.5	48.3
2	50	57	60.3
5/2	65	76.1	76.1
3	80	88.9	88.9
7/2	90	101.6	101.6
4	100	108	114.3
5	125	133	139.7
6	150	159	168.3
8	200	216	219.1
10	250	267	273.0
12	300	318	323.9
14	350	368	355.6
16	400	419	406.4
18	450	459	457.2
20	500	521	508.0
24	600	622	609.6
28	700	720	711.2
32	800	820	812.8
36	900	920	944
40	1000	1020	1016.0





## Electrical Metallic Tubing (EMT) Thinwall Conduit

Conduit plus weight of heaviest conductor combination as specified by the National Electrical Code. Electrical Metallic tubing shall be supported at least every 10 feet and within 3 feet (914mm) of each outlet box, junction box, cabinet, or fitting. See NEC Article 348.

Dimensions taken from ANSI C80.3-1977

Nominal Conduit Size		Outside Diameter		Nominal Inside Diameter		Minimum Weight with Couplings Attached	
In	mm	In	mm	In	mm	Lbs/100 Ft.	Kg/10m
3/8	10	0.57	14.7	0.49	12.5	23.0	3.4
1/2	15	0.70	17.9	0.62	15.8	28.5	4.3
3/4	20	0.92	23.4	0.82	20.9	43.5	6.5
1	25	1.16	29.5	1.04	26.6	64.0	9.6
5/4	32	1.51	38.3	1.38	35.1	95.0	14.3
3/2	40	1.74	44.2	1.61	40.9	110.0	16.6
2	50	2.19	55.8	2.06	52.5	140.0	21.1
5/2	65	2.87	73.0	2.73	69.4	205.0	31.0
3	80	3.50	88.9	3.35	85.2	250.0	37.8
7/2	90	4.00	101.6	3.83	97.4	325.0	49.1
4	100	4.50	114.3	4.33	110.1	370.0	55.9

## Rigid Aluminum Conduit

Dimensions taken from ANSI C80.5-1977

Nominal Conduit Size		Outside Diameter		Nominal Inside Diameter		Minimum Weight with Couplings Attached	
In	mm	In	mm	In	mm	Lbs/100 Ft.	Kg/10m
1/2	15	0.84	21.3	0.63	16.1	27.4	5.3
3/4	20	1.05	26.7	0.83	21.2	36.4	12.4
1	25	1.31	33.4	1.06	27.0	53.0	17.5
5/4	32	1.66	42.2	1.39	35.4	69.6	22.6
3/2	40	1.90	48.3	1.62	41.2	82.2	27.5
2	50	2.37	60.3	2.08	52.9	115.7	36.5
5/2	65	2.87	73.0	2.48	63.2	182.5	60.6
3	80	3.50	88.9	3.09	78.5	238.9	74.5
7/2	90	4.00	101.6	3.57	90.7	287.7	86.6
4	100	4.50	114.3	4.05	102.9	340.0	51.4
5	125	5.56	141.3	5.07	128.9	465.4	70.3
6	150	6.62	168.3	6.09	154.8	612.5	92.6

Conduit Size		Maximum Support Span	
In	mm	Feet	Meters
1/2 - 3/4	15-20	10	3.00
1	25	12	3.60
5/4 - 3/2	32-40	14	4.30
2 - 5/2	50-65	16	4.90
3-6	80-150	20	6.00

Conduit plus weight of heaviest conductor combination as specified by the National Electrical Code. Aluminum Rigid Conduit shall be supported at least every 10 feet (3.05m) and within 3 feet (914mm) of each outlet box, junction box, cabinet, or fitting. Except for straight runs of conduit connected with couplings which may be supported in accordance with NEC Table 346-12, provided such supports prevent transmission of stresses to termination where conduit is deflected between supports.

## Copper Tubing, Type L

Nominal Conduit Size		Outside Diameter		Nominal Inside Diameter		Minimum Weight with Couplings Attached	
In	mm	In	mm	In	mm	Lbs/100 Ft.	Kg/10m
3/8	10	0.67	17.1	0.49	12.5	57.0	8.6
1/2	15	0.84	21.3	0.62	15.8	85.0	12.8
3/4	20	1.05	26.7	0.82	20.9	113.0	17.1
1	25	1.31	33.4	1.04	26.6	168.0	26.0
5/4	32	1.66	42.2	1.38	35.1	227.0	34.3
3/2	40	1.90	48.3	1.61	40.9	272.0	41.1
2	50	2.37	60.3	2.06	52.5	365.0	55.2
5/2	65	2.87	73.0	2.46	62.7	579.0	87.5
3	80	3.50	88.9	3.06	77.9	758.0	114.6
7/2	90	4.00	101.9	3.54	90.1	911.0	137.6
4	100	4.50	114.3	4.02	102.3	1079.0	163.1
5	125	5.56	141.3	5.04	128.2	1462.0	221.0
6	150	6.62	168.3	6.06	154.1	1897.0	286.8
8	200	8.62	219.1	10.02	202.7	2855.0	431.6
10	250	10.75	271	7.98	254.5	4048.0	612.0
12	300	12.75	323.1	12.00	304.8	4956.0	749.3
14	350	14.00	355.6	13.25	336.6	5457.0	825.1
16	400	16.00	406.4	15.25	387.4	6258.0	946.2
18	450	18.00	457.2	17.20	438.2	7059.0	1067.3
20	500	20.00	508.0	19.25	489.0	7860.0	1188.4
24	600	24.00	609.6	23.25	590.6	9462.0	1430.6

## Schedule 40 PVC Plastic Pipe

Nominal Conduit Size		Outside Diameter		Nominal Inside Diameter		Minimum Weight with Couplings Attached	
In	mm	In	mm	In	mm	Lbs/100 Ft.	Kg/10m
1/8	3	0.40	10.3	0.26	6.8	4.7	0.7
1/4	6	0.54	13.7	0.36	9.2	8.2	1.2
3/8	10	0.67	17.1	0.49	12.5	10.9	1.6
1/2	15	0.84	21.3	0.62	15.8	16.4	2.4
3/4	20	1.05	26.7	0.82	20.9	21.8	3
1	25	1.31	33.4	1.04	26.6	32.1	4.8
5/4	32	1.66	42.2	1.38	35.1	43.4	6.5
3/2	40	1.90	48.3	1.61	40.9	51.8	7.8
2	50	2.37	60.3	2.06	52.5	69.5	10.3
5/2	65	2.87	73.0	2.46	62.7	109.6	16.5
3	80	3.50	88.9	3.06	77.9	143.5	21.7
7/2	90	4.00	101.6	3.54	90.1	175.6	26.5
4	100	4.50	114.3	4.02	102.3	204.3	30.9
5	125	5.56	141.3	5.04	128.2	281.7	42.6
6	150	6.62	168.3	6.06	154.1	360.9	54.5
8	200	8.62	219.1	7.98	202.7	545.3	82.4
10	250	10.75	273.1	10.02	254.5	791.3	119.6
12	300	12.75	323.9	11.93	303.2	1035.2	156.5

**CONTACT  
INFORMATION**

# Contact Information

## Sales Offices/Entities

---

### KINGDOM OF SAUDI ARABIA

unitech.ksa@ikkgroup.com

#### Jeddah

Tel : +966 12 627 8222

#### Mak kah/Taif

Tel : +966 12 541 1206

#### Mad inah

Tel : +966 14 8420959

#### Yanbu

Tel : +966 14 396 8885

#### Khamis Mushayt

Tel : +966 17 237 5929

#### Gizan

Tel : +966 17 321 6660

#### Riyadh

Tel : +966 11 292 8200

#### Qassim / Buraidah

Tel : +966 16 316 1122

#### Tabuk

Tel : +966 14 423 5203

#### Dammam

Tel : +966 13 859 0097

#### Hufuf

Tel : +966 13 530 1474

#### Jubail

Tel : +966 13 361 4390

### UNITED ARAB EMIRATES

#### Dubai - Al Rashidiyah

unitech.dubai@ikkgroup.com  
Tel : +971 4 2591 773

#### Abu Dhabi - Musaffah

unitech.auh@ikkgroup.com  
Tel: +971 2 552 3393

### BAHRAIN

#### Manama

unitech.bahrain@ikkgroup.com  
Tel : +973 17 874 897

### KUWAIT

#### Kuwait City

unitech.kuwait@ikkgroup.com  
Tel : +965 2 2459 984

### QATAR

#### Doha

info@unitech-qatar.com  
Tel: +974 4451 3301

### OMAN

#### Muscat

unitech.oman@ikkgroup.com  
Tel : +968 24 591 006

### LEBANON

#### Beirut

unitech.lebanon@ikkgroup.com  
Tel : +961 1 858 277

### EGYPT

#### Cairo 6<sup>th</sup> of October City

unitech.egypt@ikkgroup.com  
Tel : +20 2 3820 6477

### PAKISTAN

#### Lahore - Punjab

unitech.pakistan@ikkgroup.com  
Tel: +92 42 32301578

## SFSP Factories

---

### SFSP - KSA

Specialized Factory for Steel Products  
sfsp.jeddah@ikkgroup.com

#### 3<sup>rd</sup> Industrial City / Jeddah

Tel: +966 12 637 4482

### SFSP / UAE

SIGMA Factory for Steel Products  
sfsp.uae@ikkgroup.com

#### DIC (Dubai Industrial City)

Tel : +971 4 818 1919

### SFSP / EGYPT

Specialized Factory for Steel Products  
sfsp.cairo@ikkgroup.com

#### 6<sup>th</sup> of October City Giza

Tel : +20 2 3820 6477

### SFSP / LEBANON

Specialized Factory for Steel Products / s.a.r.l  
sfsp.lebanon@ikkgroup.com

#### Tanayel, Bekaa

Tel : +961 8 514 290

## Engineering & Design

---

### GERMANY

unitech.germany@ikkgroup.com

#### United Deutschland GmbH

Stuttgart, Germany  
Tel : +49 711 6868 7222

## Marketing & Multimedia

---

### Multi-D s.a.r.l

multi-d@ikkgroup.com

#### Multi-D

Beirut, Lebanon

Tel : +961 1 841 155

