

ENTRANCE MATTING SYSTEM

www.unitech-ikk.com
www.nexus-ikk.com
www.ikkgroup.com



UNITECH
For Building and Construction Materials

ENTRANCE MATTING SYSTEMS

NEXUS

PRODUCED BY



SPECIALIZED FACTORY FOR STEEL PRODUCTS
SIGMA FACTORY FOR STEEL PRODUCTS



Nexus Entrance Matting Systems

Index

About UNITECH	3
About NEXUS	10
Nexus Entrance Matting Systems	13
Contact Information	27



ABOUT UNITECH

Unitech Introduction

Unitech is a Saudi based Multinational Company providing building and construction solutions that is empowering the region's construction industry for the past 40+ years. We have been successfully providing solutions through mastering our main business activities: Design, Manufacture and Trade.

**Design:**

Provide Design & Engineering Solution to the construction sector, complying with international & local standards.

**Manufacture:**

Operating with Global Standards, we are widely recognized for our advanced light steel solutions and Hot-Dip Galvanization Facility.

**Trade:**

We are one of the region's largest Importer/Exporter of Building & Construction Materials.

Unitech is an **ISO QMS 9001:2015** certified company and is a member of the US Green Building Council. Our experienced teams and operations are present across the Middle-East North Africa regions (MENA) and Pakistan, giving us an extensive regional network that benefits our clients and partners. We are also present in Europe via our design and engineering office in Stuttgart.

For more information, please visit: www.unitech-ikk.com

Mission & Vision

Mission

UNITECH is committed to transforming the construction and building sector by equipping engineers with advanced solutions and expert support at every project stage. As a leading industry provider, we empower our team to deliver exceptional service that consistently exceeds expectations. By fostering a cohesive and forward-focused culture, we attract and retain top talent, driving our mission forward. Our innovative, customer-centric products set new industry benchmarks and pave the way for future progress.

Vision

To be the Customer's First Choice...

Our Strategy

Unitech's strategy continues to focus on accelerating its business throughout the region, to service the construction sector via superior products & solutions, backed up by a group of highly experienced people in the field. Unitech also aims to enhance its geographical presence in its areas of interest and where opportunities exist.

We combine a deep understanding of building and construction materials markets with a successful history of upgrading our products and developing our processes.

We have the qualified employees, the know-how and the products to service major construction projects, medium sized to mega projects taking in care our positive contribution to our societies.

We thrive towards excellence by acknowledging:



Customer Satisfaction



Partner and Supplier Relations



Employee Retention



Positive Influence on Society and Environment

Our Employees

We are a company that prides itself on its 'family' culture and we seek out high-caliber people. We are a company that has, at its core, a team philosophy that is clearly apparent each and every day - there is a real sense of being there for one another.

We believe in nurturing the skills of our team members and providing growing levels of responsibility. Our people bring unique skills, energy, expertise, experience and perspectives to our workforce.

Unitech's family of employees consists of experienced, well-motivated and dedicated team of engineers, technicians, sales executives and management staff. This team is committed to serve our customers, with the best solutions available in the market.

Our Journey

40+ Years of Excellence

Since 1979, having been set to become an independent company under the framework developed by Sheikh Isam Kabbani, Unitech started its journey of success with confidence and enthusiasm, hard work and care to detail and a commitment to become the best within its industry.

Its dedicated people could only imagine what the future could bring to this newly established entity. Unitech's journey of success has been marked with outstanding achievements and superior accomplishments. Year by year, Unitech has been acknowledged as the "First Choice for Building & Construction Material" by major construction consultants in the region, governmental authorities, well-known contracting and project development corporations.

We have obtained invaluable knowledge about the construction industry in general, providing specialized solutions to construction projects throughout MENA region. From a couple of outlets in Saudi Arabia, Unitech today is present all over the Kingdom and in several countries throughout the region providing its products and solution to various locations worldwide.



Est. 1979

THE BEGINNING

Unitech was established in the Western Region of KSA as a Sales Company selling basic construction material.

During the same year, another branch was established in the heart of the kingdoms capital, Riyadh.



1980 to 1989

AGE OF GREAT RISK

Unitech Dammam was open for business in the oil-rich eastern coast of Saudi Arabia.

Within these 10 years the idea of in-house manufacturing facility was born and Specialized Factory for Steel Products (SFSP) was established in Riyadh.



1990 to 1999

AGE OF GROWTH

Branches of Unitech were established in Makkah, Madina, Khamis Mushayt and Jubail.

The need to increase its range of products and the necessity to have production lines for mass production lead to the decision to move the SFSP Factory from Riyadh to Jeddah.

Pioneering Construction Since 1979

We are constantly evolving in order to become more flexible in our operations, more sustainable in our societies, and more innovative in conducting our business.

By delivering superior products tailored to the specific construction needs, ambitious solutions, and an outstanding customer service, we serve today's needs through developing tomorrow's markets.

Helping construction projects experience success is what fueled its days. Unitech is keen to continue offering superior products, a wide spectrum of solutions, governed by our top-notch management style.

Such aspirations require trust in our responsibilities. Our Responsibilities for the future and with this in mind we continue to target excellence with committed efforts.



2000 to 2015

AGE OF CONSTRUCTION BOOM

Qassim, Hofuf and Yanbu Branches were inaugurated in KSA and branches outside KSA were established in UAE, Egypt, Lebanon, Oman, Jordan and Germany in order to facilitate the construction boom in the Middle East. During this period SFSP state of the art facilities were launched in DIC UAE and Unitech thrived, marking some of the best years in business.



2016 to 2019

AGE OF GREAT CHANGE

This period, marked the age of great change in order to align with the economic shift in the GCC and the world in general.

Company wide right sizing initiatives were taken especially in KSA to align with the kingdom's ambitious vision 2030 and during this period the upgraded SFSP state of the art facilities were launched in JIC 3 KSA.



2020 & Beyond

NEW FRONTIER

This period marks the expansion of Unitech into the South and Central Asian territories. We aim to cater these markets and play an active role in these countries development.

During 2020, Unitech Pakistan was officially inaugurated and marked the entrance of Unitech into Asian Market.

Our Manufacturing Arm

SFSP

SFSP is a leading manufacturer and fabricator of light steel construction products in the region, servicing the construction sector through its state of the art facilities which are spread all over the MENA region. Products of SFSP are manufactured from quality raw material according to the relevant international standards to meet all kinds of construction projects requirements, such as MEP, façade, blockwork & waste management systems.

Commitment to Quality

Our commitment to quality is clearly revealed in the way we do our business; our processes, our close interaction with our clients as well as the strict product inspection procedures. To achieve this, we have implemented quality systems & processes that are continually being improved to satisfy our customer's needs.

Product Development

Product development process is substantial to the success of our business. We leverage all resources to provide up-to-date reliable products, environmentally friendly, durable to withstand the toughest weather conditions. Our engineers are constantly testing the products, seeking to present a combination of performance and quality across all our product ranges.

For more information, please visit:
www.sfsp-ikk.com

Value Chain

Our value chain starts up with the quality of the raw materials and ends up in client satisfaction. Our business practices backed up by all technologically essential business elements are supported by an efficient logistics, warehousing and delivery system that maintains a valuable supply chain for products.

The value chain is integrated in our business module, giving us strength and preserving our good reputation gained through the past 4 decades.

Engineering Specialty

Our products development engineers integrate their vast knowledge to provide the perfect solution to projects within the required specifications and time-frame.

The products development department maintains highly skilled calibers with a dedication towards efficient and reliable solutions even in the most complicated cases where delicacy and skillful approaches are indispensable.

Design and Product Safety

Our design and engineering office in Stuttgart ensures our products comply with relevant European and international standards of fabrication, taking into attention the safety factors which govern the public safety of projects.

Sustainability and Responsibility

We are constantly working hard to reduce our environmental footprints while maintaining the high quality and safety standards. We have set our targets to become three times more efficient in the next 10 years. Our responsibility towards our stakeholders is valued through our positive contributions towards our colleagues, our business partners and our communities as well.


Our Design Office



UNITECH DEUTSCHLAND is a "Design & Engineering" Office. Unitech Germany support Unitech & SFSP operations through well-informed cadre of engineers. They help our customers from conception to the completion by delivering design, engineering and project management services.

Thanks to our multidisciplinary team in Unitech Germany and their expertise, we assist you in your ambition to develop your innovation, your engineering and your organization. Our goal is to serve our clients through these elements:

- Excellent in engineering ideas and solutions
- High quality in performance
- Firmness on meeting deadlines



ABOUT NEXUS

NEXUS is a part of UNITECH's wide range of product and is solely produced by "SFSP" Factories around the region. Nexus offer comprehensive solutions for the construction industry ranging from Expansion Joint Covers and Fire Barriers to Entrance Matting Systems, Wall and Floor Profiles, Tactile Solutions, etc... NEXUS range of products is manufactured according to most common international standards to meet the requirements of commercial, residential, governmental, transportation, healthcare and educational projects. In addition to its wide array of profiles and variety of finishes, NEXUS provides the technical expertise via its qualified and dedicated team of engineers and industry-experts in the fields. NEXUS range of products is manufactured from high quality raw material and designed to withstand high volume of traffic as well as extreme weather conditions.

NEXUS

Expansion & Movement Joint Systems

Our variety of expansion joints includes profiles for walls and floors, profiles for seismic movements, watertight profiles. Our products suit pedestrian as well as heavy load traffic areas.



EXPANSION JOINT



SEISMIC EXPANSION JOINT



WATER PROOF
EXPANSION JOINT

Nexus Fire Barriers

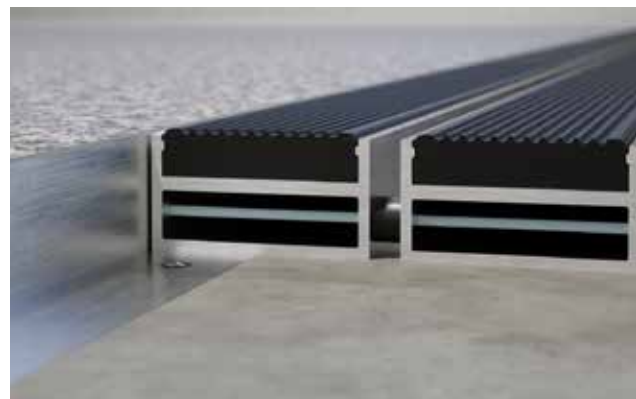
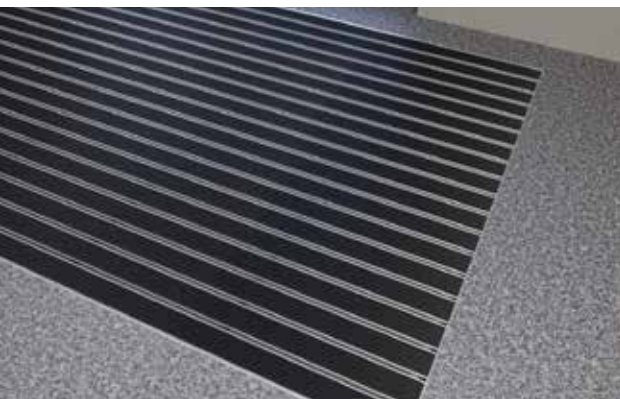
Nexus Fire Barriers for vertical and horizontal expansion joint gaps with minimum movement capacity of 50% of the joint width. Manufactured in accordance with ASTM E-1399 and UL-2079 testing requirements



NEXUS

Entrance Matting Systems

Nexus Entrance matting systems provides heavy duty entrance mats, composed of aluminium profiles with carpet, brushes or rubber inserts. For any design of any shape, being round, square, oval, or any other symmetrical or asymmetrical shape, Nexus offers a variety of entrance matting profiles



Nexus offer comprehensive solutions for the construction industry ranging from Expansion Joint Covers and Fire Barriers to Entrance Matting Systems, Wall and Floor Profiles, Tactile Solutions, etc... NEXUS range of products is manufactured according to most common international standards to meet the requirements of commercial, residential, governmental, transportation, healthcare and educational projects.



PROFILES FOR FLOORS AND WALLS



STAIR NOSING



SKIRTING



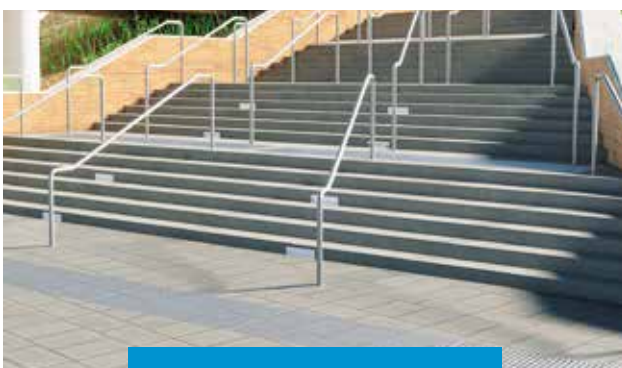
MOVEMENT JOINT



CHANNELS / STRIPS



LANDSCAPING



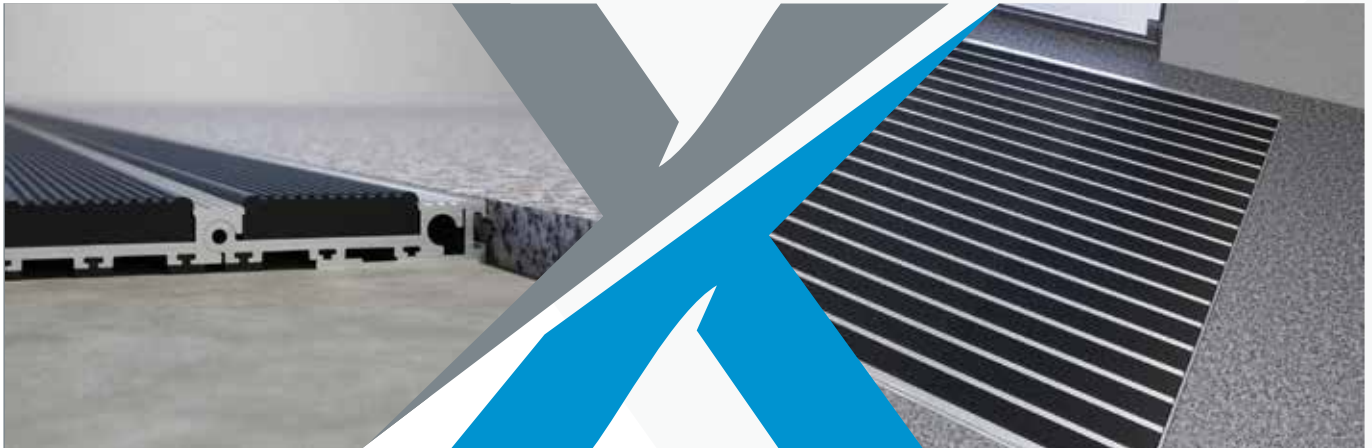
TACTILE SOLUTIONS



RUBBER GASKETS



NEXUS ENTRANCE MATTING SYSTEMS



ALUMINUM-RUBBER PROFILE

Anti-Slip Heavy-Duty

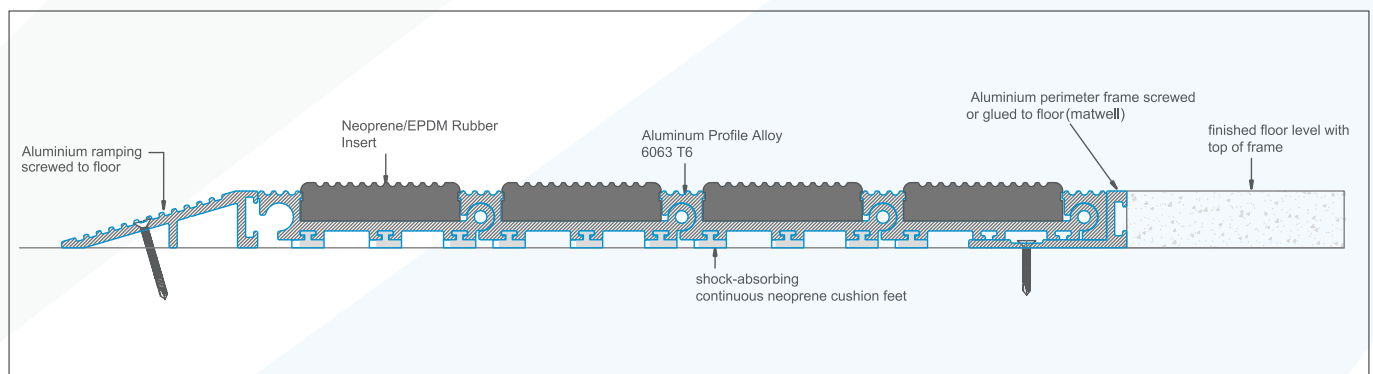
Entrance matting corrosion-resistant version can be used for outside as well as inside areas with normal to heavy traffic. It prevents dirt and moisture from entering the building and is available with anti-slip knurled rubber and aluminum. This type reduces noise generated from heavy traffic and is dimensionally stable and easy to clean.

ALUMINIUM PROFILE Aluminium profile alloy 6063-T6, wall thickness up to 2.5 mm for laying directly into existing or new matwells.

UPPER Anti-slip knurled EPDM Rubber or Neoprene, heavy-duty and UV-resistant conforming to DIN 7863.

UNDERNEATH Base of the mat is mechanically fitted with rubber inserts for anti-slip and noise reduction.

PROFILE COLOURS Material can be in mill finish aluminum or anodized silver, gold or bronze colors with black rubber insert.



Use in the outside area



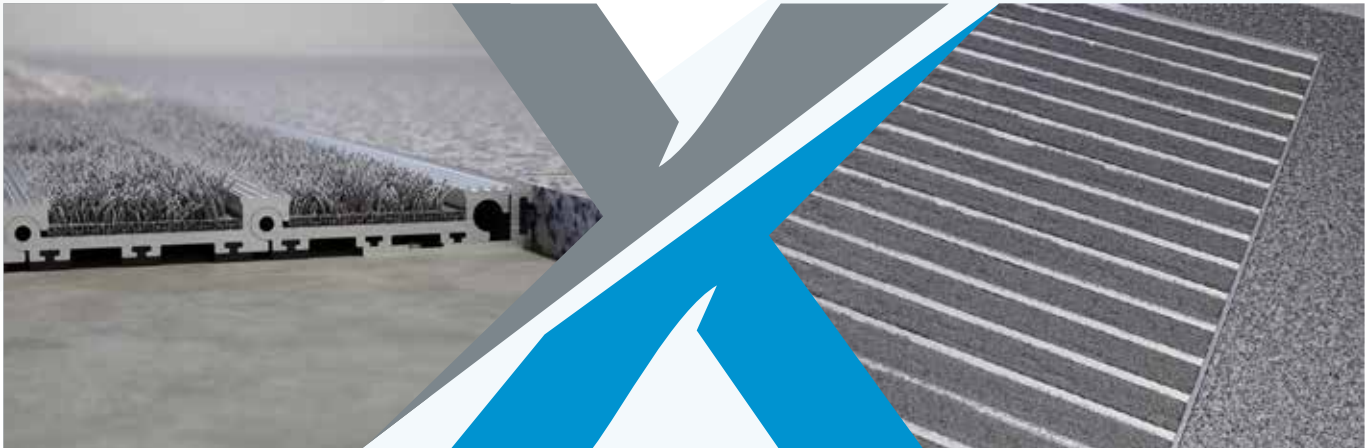
Use in the inside area



Wheelchair accessible



Recyclable

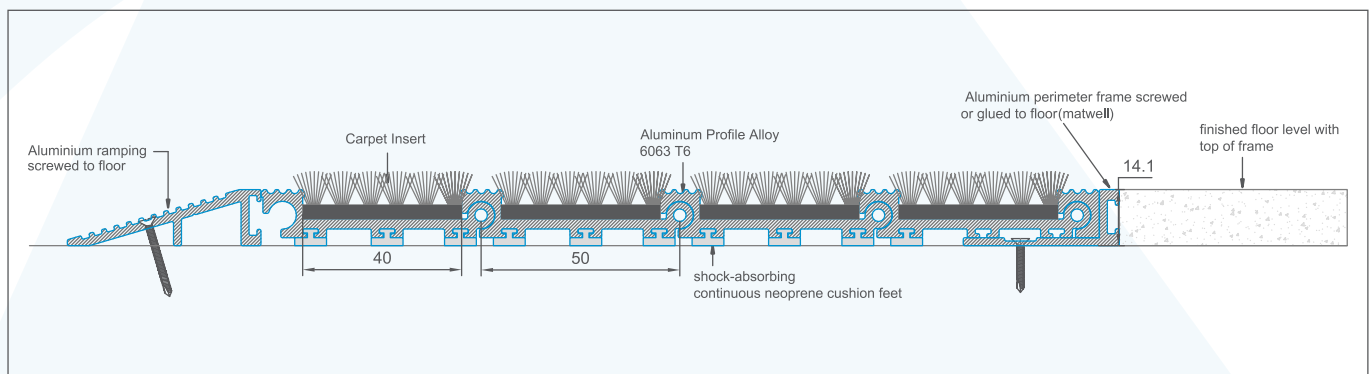


ALUMINUM-CARPET PROFILE

Anti-Slip Heavy-Duty

Entrance matting corrosion-resistant version for areas of heavy traffic. It prevents dirt and moisture from entering the building and is available with anti-slip knurled rubber and aluminum. This type reduces noise generated from heavy traffic and is dimensionally stable and easy to clean.

ALUMINIUM PROFILE	Aluminium profile alloy 6063-T6, wall thickness up to 2.5 mm for laying directly into existing or new matwells.
UPPER	Anto slip ribbed carpet insert, UV-resistant heavy-duty conforming to DIN 51130.
UNDERNEATH	Base of the mat is mechanically fitted with shock absorbing neoprene cushion pads for anti slip and noise reduction.
PROFILE COLOURS	Material can be in mill finish aluminum or anodized silver, gold or bronze colors with a variety of colors for carpet inserts.



Use in the outside area



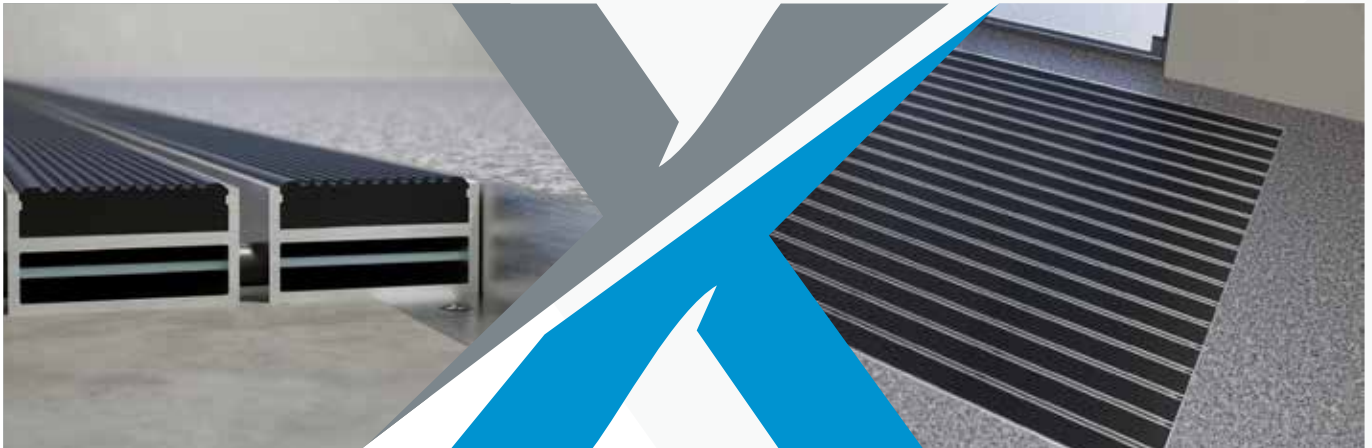
Use in the inside area



Wheelchair accessible



Recyclable



ALUMINUM-RUBBER HIGH PROFILE

Anti-Slip Aluminum Rubber Entrance

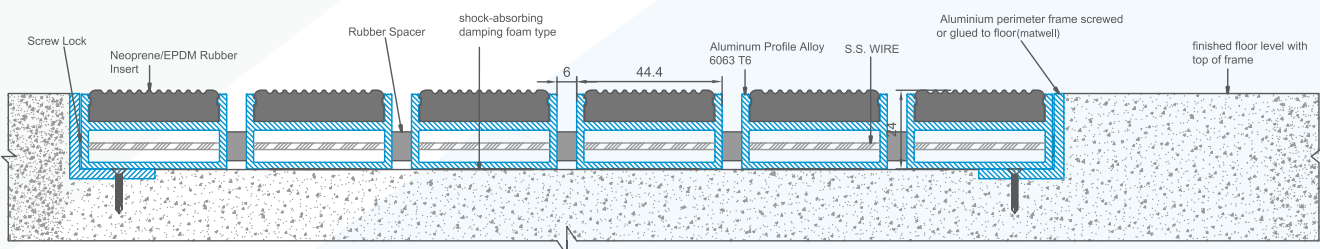
High Profile entrance matting corrosion-resistant version with Neoprene or EPDM rubber inserts can be used for outside as well as inside areas with normal to heavy traffic. It prevents dirt and moisture from entering the building and is layed on a shock absorbing damping foam. This type reduces noise generated from heavy traffic and is greatly capable of collecting dirt. The panels are connected to each other through a stainless steel wire.

ALUMINIUM PROFILE Aluminium profile alloy 6063-T6, wall thickness 1.1 mm for laying directly into existing or new matwells.

UPPER Anti-slip knurled EPDM Rubber or Neoprene, heavy-duty and UV-resistant conforming to DIN 7863.

UNDERNEATH Base of the mat is mechanically fitted with shock absorbing damping foam. Panels are connected with stainless steel wire.

PROFILE COLOURS Material can be in mill finish aluminum or anodized silver, gold or bronze colors with black rubber insert.



Use in the outside area



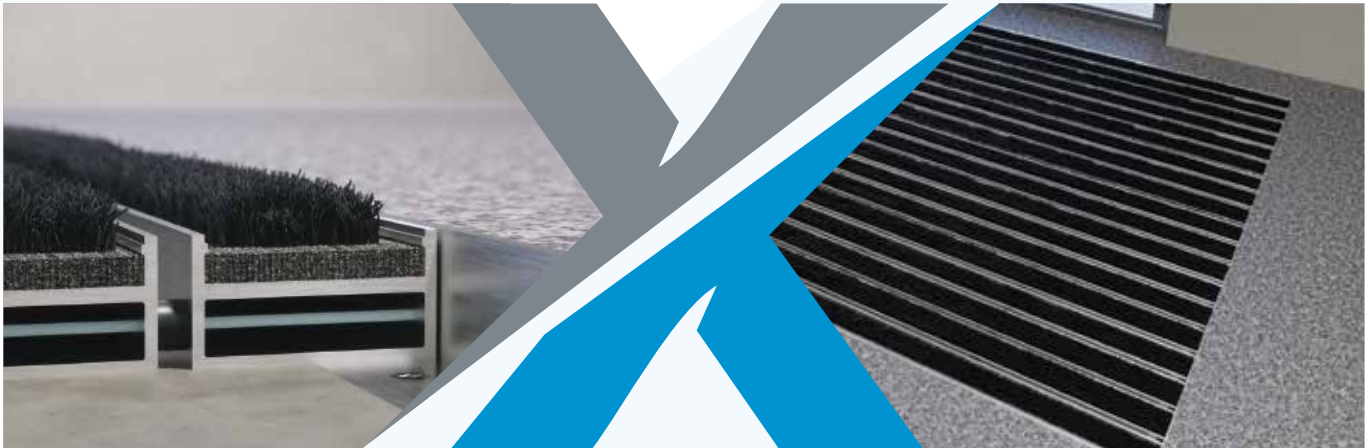
Use in the inside area



Wheelchair accessible



Recyclable



ALUMINUM-CARPET PROFILE

Anti-Slip Heavy-Duty

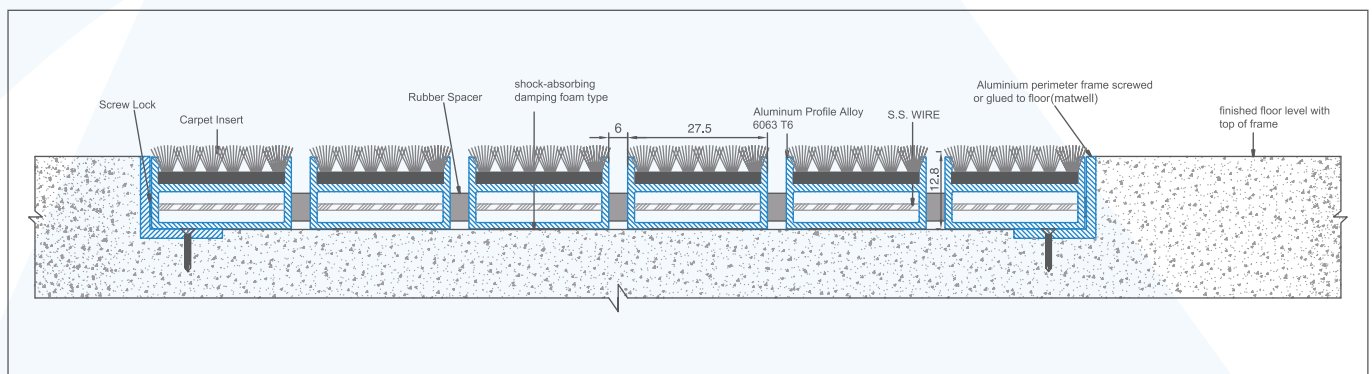
High Profile entrance matting corrosion-resistant version with Neoprene or EPDM rubber inserts can be used for outside as well as inside areas with normal to heavy traffic. It prevents dirt and moisture from entering the building and is layed on a shock absorbing damping foam. This type reduces noise generated from heavy traffic and is greatly capable of collecting dirt. The panels are connected to each other through a stainless steel wire.

ALUMINIUM PROFILE Aluminium profile alloy 6063-T6, wall thickness 1.1 mm for laying directly into existing or new matwells.

UPPER Anti-slip ribbed carpet insert, UV resistant heavy duty conforming to DIN 51130.

UNDERNEATH Base of the mat is mechanically fitted with shock absorbing damping foam. Panels are connected with stainless steel wire.

PROFILE COLOURS Material can be in mill finish aluminum or anodized silver, gold or bronze colors with a variety of colors for carpet inserts.



Use in the outside area



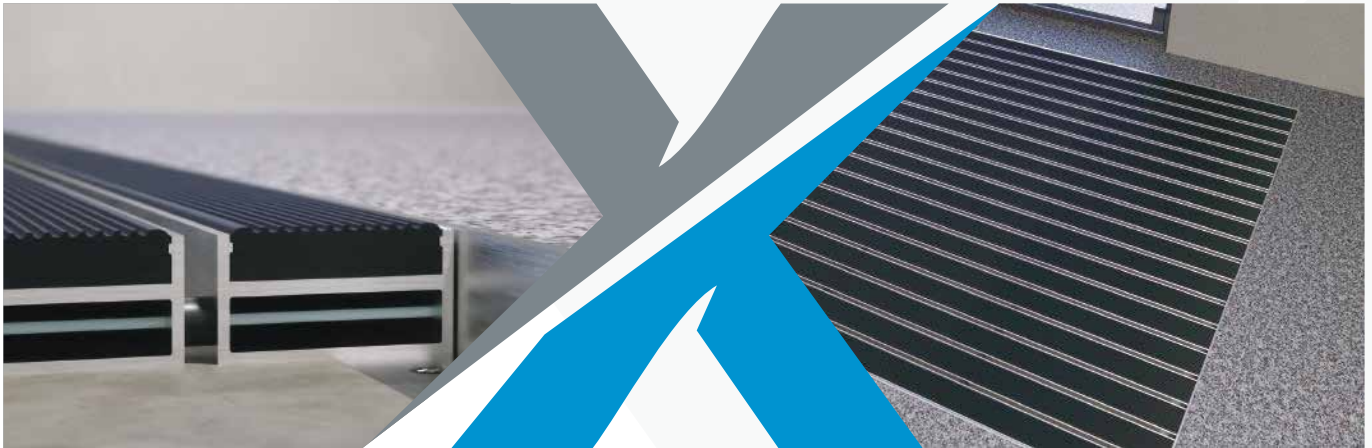
Use in the inside area



Wheelchair accessible



Recyclable



ALUMINUM-RUBBER HIGH PROFILE

Anti-Slip Aluminum Rubber Entrance

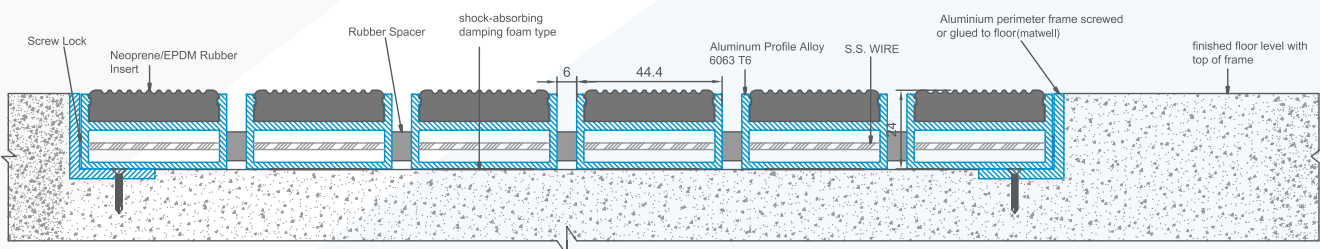
High Profile entrance matting corrosion-resistant version with Neoprene or EPDM rubber inserts can be used for outside as well as inside areas with normal traffic areas. It prevents dirt and moisture from entering the building and is layed on a shock absorbing damping foam. This type reduces noise generated from heavy traffic and is greatly capable of collecting dirt. The panels are connected to each other through a stainless steel wire.

ALUMINIUM PROFILE Aluminium profile alloy 6063-T6, wall thickness 1.1 mm for laying directly into existing or new matwells.

UPPER Anti-slip knurled EPDM Rubber or Neoprene, heavy-duty and UV-resistant conforming to DIN 7863.

UNDERNEATH Base of the mat is mechanically fitted with shock absorbing damping foam. Panels are connected with stainless steel wire.

PROFILE COLOURS Material can be in mill finish aluminum or anodized silver, gold or bronze colors with black rubber insert.



Use in the outside area



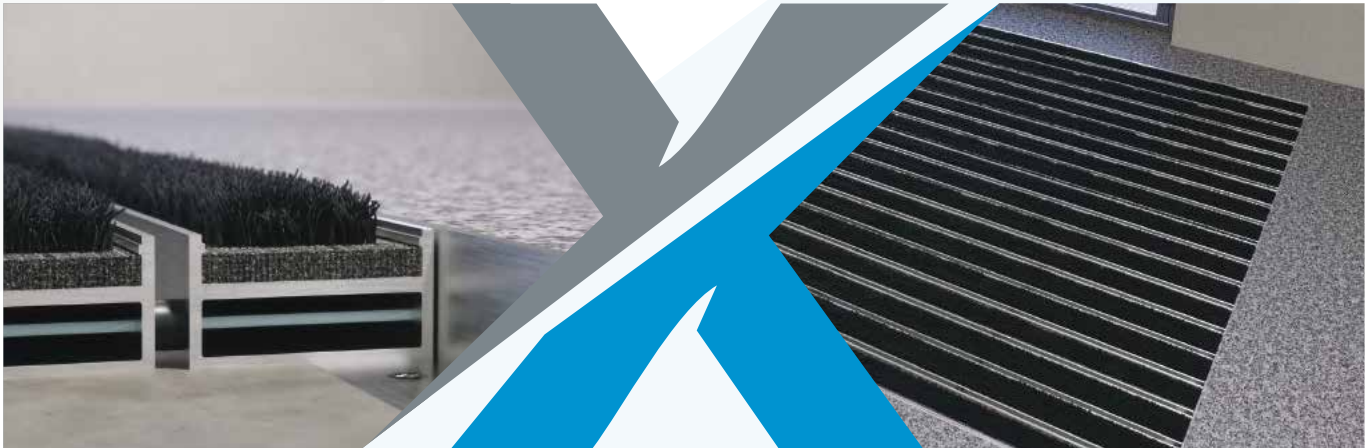
Use in the inside area



Wheelchair accessible



Recyclable



ALUMINUM-CARPET HIGH PROFILE

Anti-Slip Aluminum Carpet Entrance

High Profile entrance matting corrosion-resistant version can be used for outside as well as inside areas with normal traffic areas. It prevents dirt and moisture from entering the building and is laid on a shock absorbing damping foam. This type reduces noise generated from heavy traffic and is greatly capable of collecting dirt.

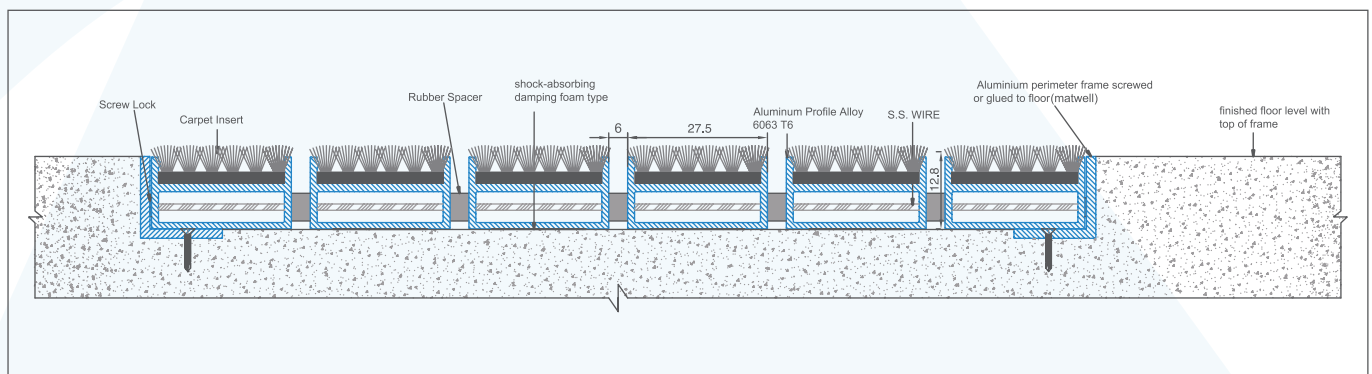
The panels are connected to each other through a stainless steel wire.

ALUMINIUM PROFILE Aluminium profile alloy 6063-TS, wall thickness 1.1 mm for laying directly into existing or new matwells.

UPPER Anti-slip ribbed carpet insert, UV-resistant heavy-duty conforming to DIN 51130.

UNDERNEATH Base of the mat is mechanically fitted with shock absorbing damping foam. Panels are connected with stainless steel wire.

PROFILE COLOURS Material can be in mill finish aluminum or anodized silver, gold or bronze colors with a variety of colors for carpet inserts.



Use in the outside area



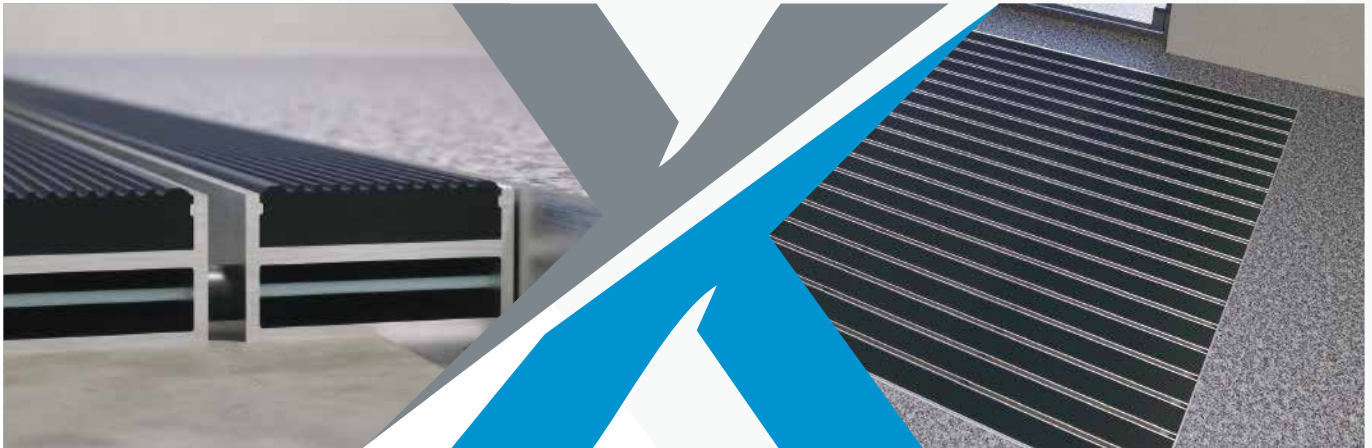
Use in the inside area



Wheelchair accessible



Recyclable



ALUMINUM-RUBBER HIGH PROFILE

Anti-Slip Aluminum Rubber Entrance

High Profile entrance matting corrosion-resistant version with Neoprene or EPDM rubber inserts can be used for outside as well as inside areas with normal traffic areas. It prevents dirt and moisture from entering the building and is laid on a shock absorbing damping foam.

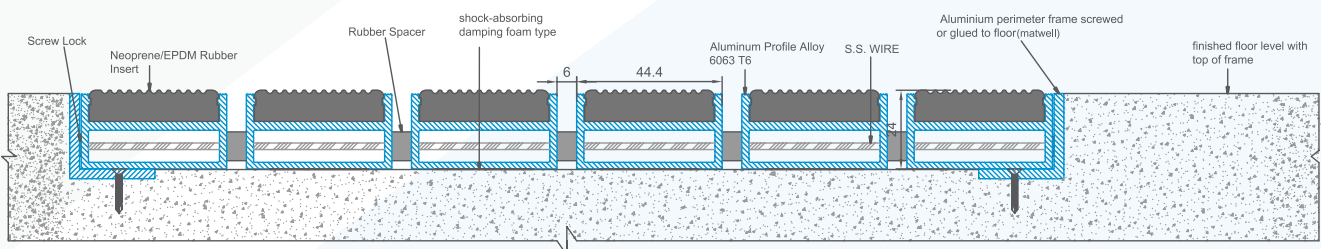
This type reduces noise generated from heavy traffic and is greatly capable of collecting dirt. The panels are connected to each other through a stainless steel wire.

ALUMINIUM PROFILE Aluminium profile alloy 6063-T6, wall thickness 1.1 mm for laying directly into existing or new matwells.

UPPER Anti-slip knurled EPDM Rubber or Neoprene, heavy-duty and UV-resistant conforming to DIN 7863.

UNDERNEATH Base of the mat is mechanically fitted with shock absorbing damping foam. Panels are connected with stainless steel wire.

PROFILE COLOURS Material can be in mill finish aluminum or anodized silver, gold or bronze colors with black rubber insert.



Use in the outside area



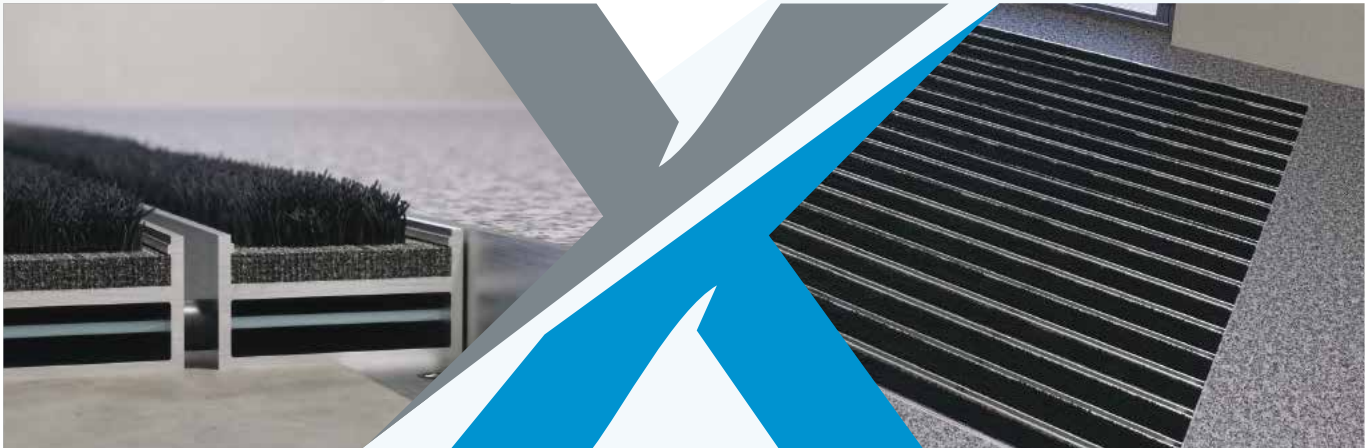
Use in the inside area



Wheelchair accessible



Recyclable

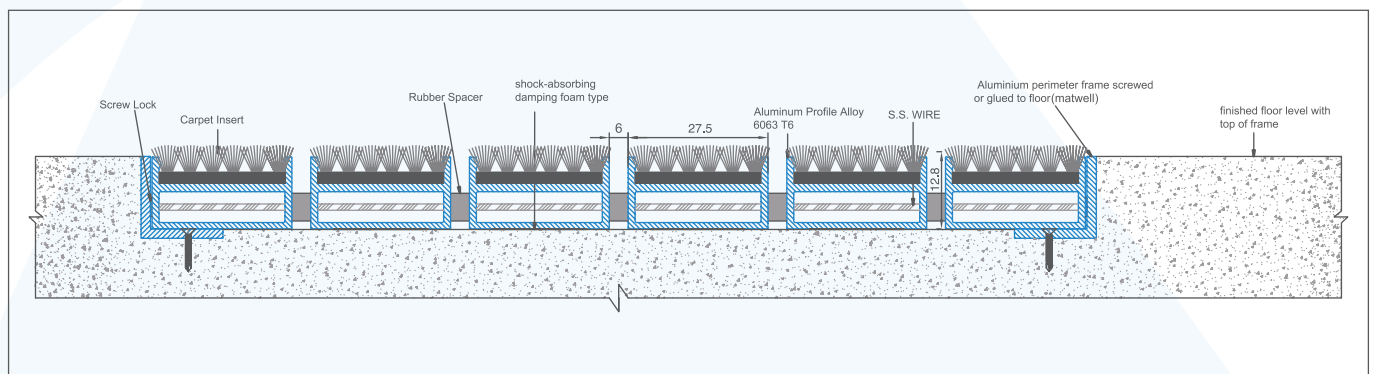


ALUMINIUM-CARPET HIGH PROFILE

Anti-Slip Aluminum Carpet Entrance

High Profile entrance matting corrosion-resistant version can be used for outside as well as inside areas with normal traffic areas. It prevents dirt and moisture from entering the building and is laid on a shock absorbing damping foam. This type reduces noise generated from heavy traffic and is greatly capable of collecting dirt. The panels are connected to each other through a stainless steel wire.

ALUMINIUM PROFILE	Aluminium profile alloy 6063-TS, wall thickness 1.1 mm for laying directly into existing or new matwells.
UPPER	Anti-slip ribbed carpet insert, UV-resistant heavy-duty conforming to DIN 51130.
UNDERNEATH	Base of the mat is mechanically fitted with shock absorbing damping foam. Panels are connected with stainless steel wire.
PROFILE COLOURS	Material can be in mill finish aluminum or anodized silver, gold or bronze colors with a variety of colors for carpet inserts.



Use in the outside area



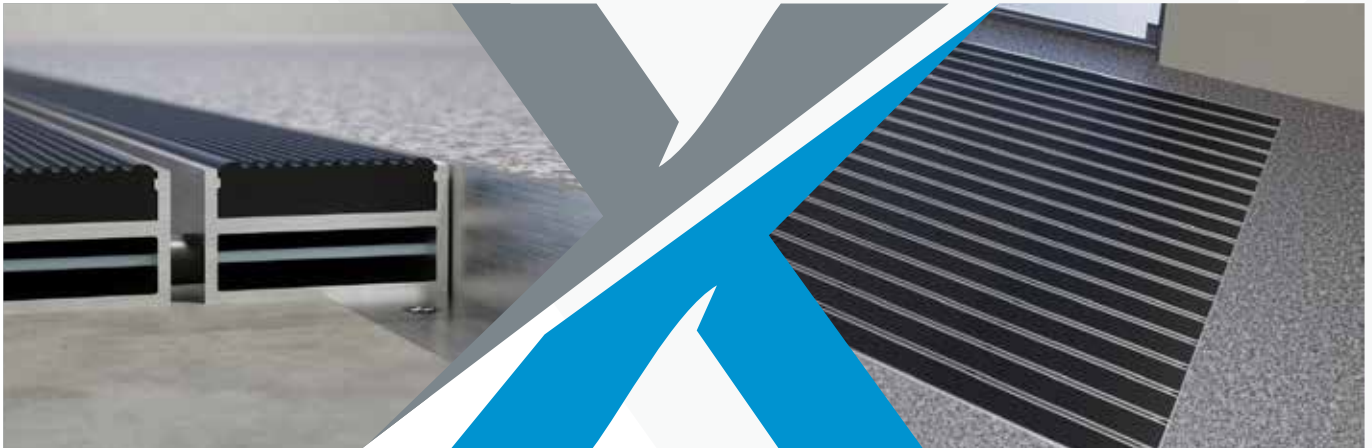
Use in the inside area



Wheelchair accessible



Recyclable



ALUMINUM-RUBBER HIGH PROFILE

ANTI-SLIP heavy duty

High Profile entrance matting corrosion-resistant version with Neoprene or EPDM rubber inserts can be used for outside as well as inside areas with normal traffic areas. It prevents dirt and moisture from entering the building and is layed on a shock absorbing damping foam.

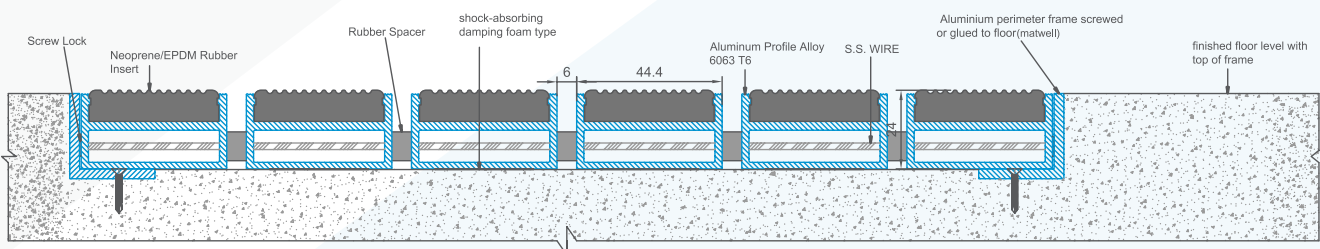
This type reduces noise generated from heavy traffic and is greatly capable of collecting dirt. The panels are connected to each other through a stainless steel wire.

ALUMINIUM PROFILE Aluminium profile alloy 6063-T6, wall thickness 1.1 mm for laying directly into existing or new matwells.

UPPER Anti-slip knurled EPDM Rubber or Neoprene, heavy-duty and UV-resistant conforming to DIN 7863.

UNDERNEATH Base of the mat is mechanically fitted with shock absorbing damping foam. Panels are connected with stainless steel wire.

PROFILE COLOURS Material can be in mill finish aluminum or anodized silver, gold or bronze colors with black rubber insert.



Use in the outside area



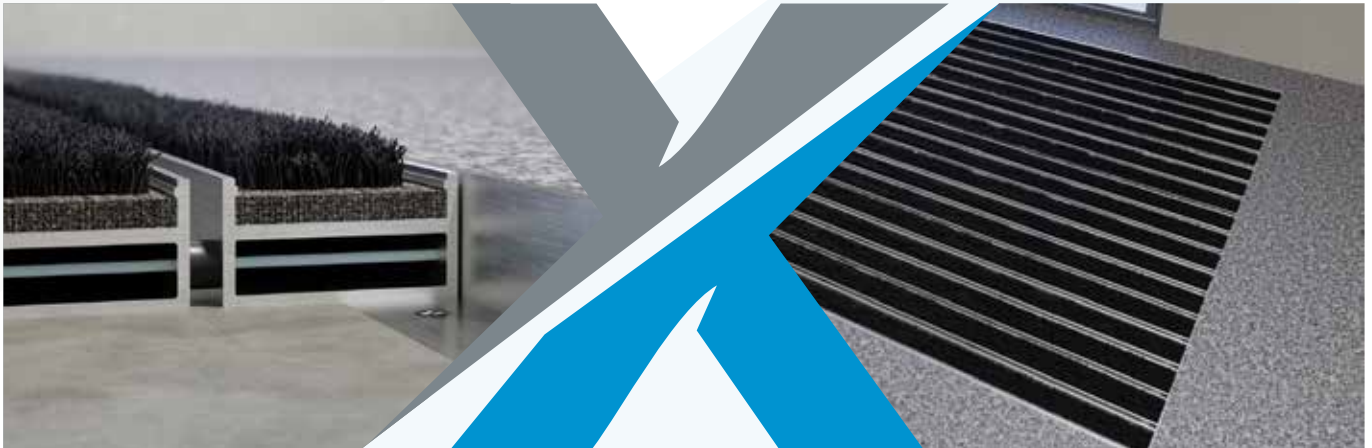
Use in the inside area



Wheelchair accessible



Recyclable



ALUMINUM-CARPET HIGH PROFILE

Anti-Slip Aluminum Carpet Entrance

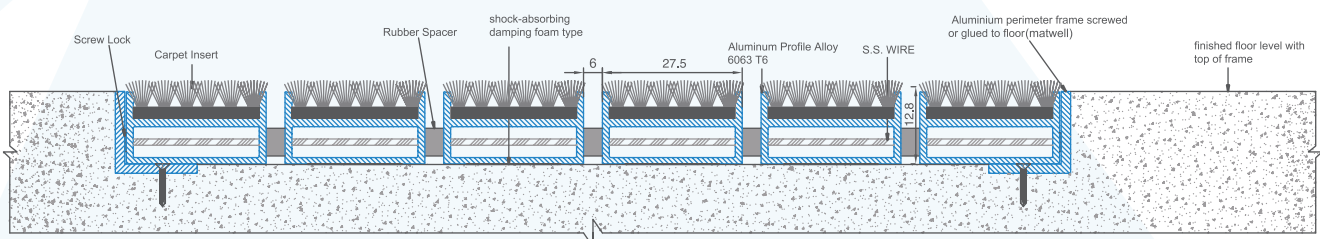
High Profile entrance matting corrosion-resistant version can be used for outside as well as inside areas with normal traffic areas. It prevents dirt and moisture from entering the building and is laid on a shock absorbing damping foam. This type reduces noise generated from heavy traffic and is greatly capable of collecting dirt. The panels are connected to each other through a stainless steel wire.

ALUMINIUM PROFILE Aluminium profile alloy 6063-TS, wall thickness 1.1 mm for laying directly into existing or new matwells.

UPPER Anti-slip ribbed carpet insert, UV-resistant heavy-duty conforming to DIN 51130.

UNDERNEATH Base of the mat is mechanically fitted with shock absorbing damping foam. Panels are connected with stainless steel wire.

PROFILE COLOURS Material can be in mill finish aluminum or anodized silver, gold or bronze colors with a variety of colors for carpet inserts.



Use in the outside area



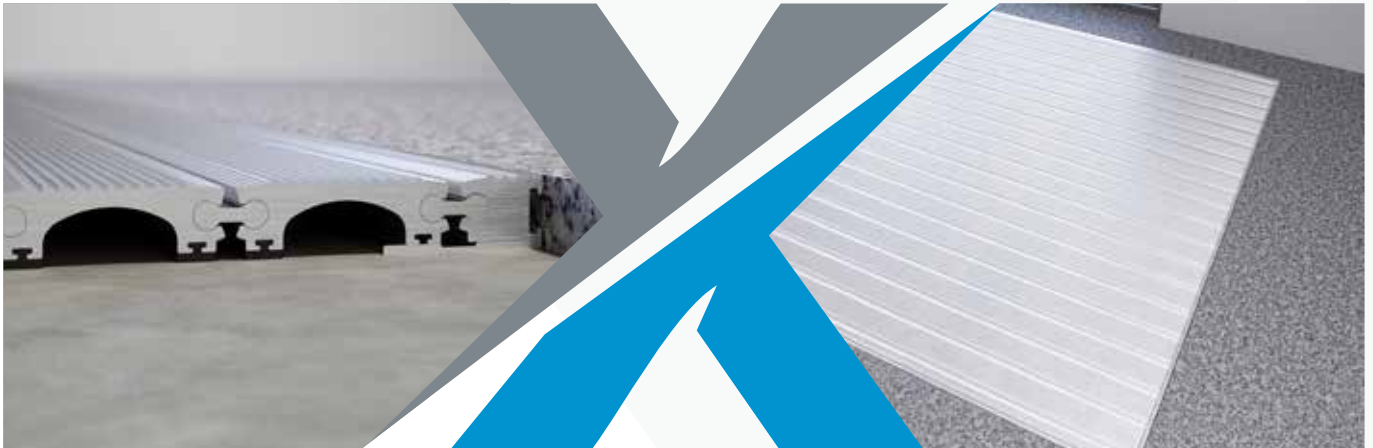
Use in the inside area



Wheelchair accessible



Recyclable



ALUMINIUM PROFILE

Corrosion resistant all aluminum matting panel can be used for outside as well as inside areas with normal to heavy traffic.

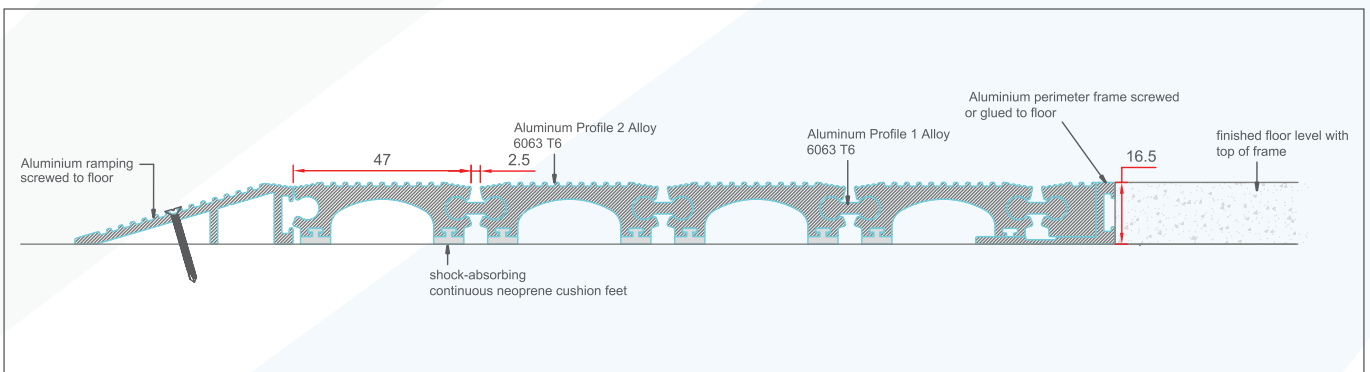
It prevents dirt and moisture from entering the building. Height of profile is 16.5 mm

ALUMINIUM PROFILE Aluminium profile alloy 6063-T6, wall thickness up to 2.5 mm for laying directly into existing or new matwells.

UPPER Aluminum strips alloy 6063-T6 attached through connectors. Size of each strip is 47 mm.

UNDERNEATH Base of the mat is mechanically fitted with shock absorbing neoprene cushion pads for anti slip and noise reduction.

PROFILE COLOURS Material can be in mill finish aluminum or anodized silver, gold or bronze colors.



Use in the outside area



Use in the inside area

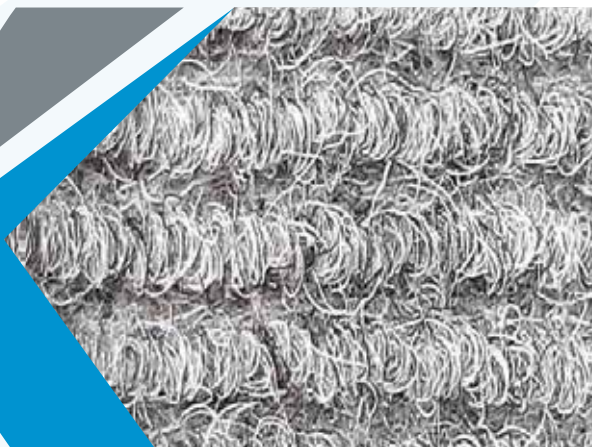


Wheelchair accessible



Recyclable

CARPET DATASHEET



Polypropylene blanket can absorb moisture and stains. Stable and beautiful color, high color fastness, dirt resistance and not easy to change color.

Cut down spacer arrangement structure has the effect of anti-slip and dust removal, wear resistance and durability.

Dust removal and anti skid, remove sole stains, reduce dust into the door.

Thick PVC bottom, adhere to the ground without sliding, soft and not easy to break, moisture-proof, environmentally safe and odorless.

- High temperature and Weather Resistance.
- Rubber back, solid and durable, not ageing.
- Clean dust, removal sand, water, hog and anti slip.

MATERIAL 100% Polypropylene

PILE HEIGHT 100mm

FIRE RESISTANCE EN95/28

COLORS As per Catalogue

APPLICATION Indoor Entrance



Use in the outside area



Use in the inside area

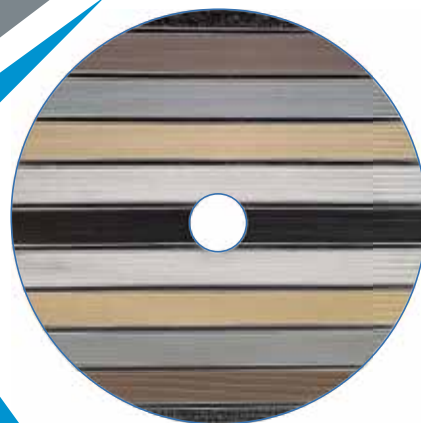


Wheelchair accessible



Recyclable

TECHNICAL DATASHEET




SR NO	PROPERTIES	TEST METHOD	UNIT	SPECIFICATION
1.	Base Polymer	EPDM		

Physical Properties

1	Hardness	ASTM D 2240	Shore A	70 ± 5
2	Tensile Strength, Min	ASTM D 412	Mpa	9
3	Elongation at Break, Min	ASTM D 412	%	220
4	Tear Strength, Min	ASTM D 624	kN/m	25
5	Specific Gravity	ASTM D 297	g/cm ³	1.30 ± 0.05
6	Compression Set, Max (22hrs@1000C)	ASTM D 395	%	28
7	After Aging Properties [Hot Air Aging 96 hrs at 70°C]			
a	Change In Hardness,Max	ASTM D 573	Shore A	± 10
b	Change In Tensile Strength,Max	ASTM D 573	%	-20
c	Change in Elongation at Break,Max	ASTM D 573	%	-25

Physical Properties

1	Resistance to UV & Ozone	Excellent
2	Resistance to Weather	Excellent
3	Water swell Resistance	Very Good
4	Resistance to Thermal Ageing	Excellent
5	Resistance to Chemicals	Excellent
6	Resistance to Mild acids	Good
7	Resistance to Alcohol	Good
8	Resistance to Petroleum Oil and Mineral Oils	Poor
9	Temperature Range(Dry Heat)	- 40 to +130 Deg C



CONTACT INFORMATION

Contact Information

Sales Offices/Entities

KINGDOM OF SAUDI ARABIA

unitech.ksa@ikkgroup.com

Jeddah

Tel : +966 12 627 8222

Mak kah/Taif

Tel : +966 12 541 1206

Mad inah

Tel : +966 14 8420959

Yanbu

Tel : +966 14 396 8885

Khamis Mushayt

Tel : +966 17 237 5929

Gizan

Tel : +966 17 321 6660

Riyadh

Tel : +966 11 292 8200

Qassim / Buraidah

Tel : +966 16 316 1122

Tabuk

Tel : +966 14 423 5203

Dammam

Tel : +966 13 859 0097

Hufuf

Tel : +966 13 530 1474

Jubail

Tel : +966 13 361 4390

UNITED ARAB EMIRATES

Dubai - Al Rashidiyah

unitech.dubai@ikkgroup.com
Tel : +971 4 2591 773

Abu Dhabi - Musaffah

unitech.aub@ikkgroup.com
Tel: +971 2 552 3393

BAHRAIN

Manama

unitech.bahrain@ikkgroup.com
Tel : +973 17 874 897

KUWAIT

Kuwait City

unitech.kuwait@ikkgroup.com
Tel : +965 2 2459 984

QATAR

Doha

info@unitech-qatar.com
Tel: +974 4451 3301

OMAN

Muscat

unitech.oman@ikkgroup.com
Tel : +968 24 591 006

LEBANON

Beirut

unitech.lebanon@ikkgroup.com
Tel : +961 1 858 277

EGYPT

Cairo 6th of October City

unitech.egypt@ikkgroup.com
Tel : +20 2 3820 6477

PAKISTAN

Lahore - Punjab

unitech.pakistan@ikkgroup.com
Tel: +92 42 32301578

SFSP Factories

SFSP - KSA

Specialized Factory for Steel Products
sfsp.jeddah@ikkgroup.com

3rd Industrial City / Jeddah

Tel: +966 12 637 4482

SFSP / UAE

SIGMA Factory for Steel Products
sfsp.uae@ikkgroup.com

DIC (Dubai Industrial City)

Tel : +971 4 818 1919

SFSP / EGYPT

Specialized Factory for Steel Products
sfsp.cairo@ikkgroup.com

6th of October City Giza

Tel : +20 2 3820 6477

SFSP / LEBANON

Specialized Factory for Steel Products / s.a.r.l
sfsp.lebanon@ikkgroup.com

Tanayel, Bekaa

Tel : +961 8 514 290

Engineering & Design

GERMANY

unitech.germany@ikkgroup.com

United Deutschland GmbH

Stuttgart, Germany
Tel : +49 711 6868 7222

Marketing & Multimedia

Multi-D s.a.r.l

multi-d@ikkgroup.com

Multi-D

Beirut, Lebanon

Tel : +961 1 841 155

