



UNITECH

For Building and Construction Materials



MEP Solutions



Architectural & Finishing Solutions



Civil Solutions



Construction Chemicals



Power, Industrial & Hand Tools



Sustainable Solution

PRODUCT PROFILE 2023

We strive everyday to be the customers First Choice

A Company with Values

Unitech's core values are based on:



Excellence
Highest
Quality



Integrity
Outstanding
Customer Service



Service with Pride
Highly Effective
Business Operation

We offer valuable products and services to our clients and work closely with them in a lasting business partnership that would give way to outstanding performance. A partnership based on trust, harmony, and a hard to beat service and solution.

Unitech Product Profile 2022

Index

Unitech Introduction	04
Our Journey 40+ Years of Excellence	06
Our Manufacturing Arm	08
Engineering Specialty	09
MEP Solutions	10
Architectural & Finishing Solutions	23
Civil Solutions	43
Construction Chemicals	54
Power, Industrial & Hand Tools	65
Sustainable Solution	73
IKK Group of Companies	80
IKK Group Major Activities	81
Contact Information	82

Unitech Introduction

Unitech is a proud Saudi company providing building and construction solutions that empower the regions' construction industry for the past 40+ years. We have been successfully providing solutions through mastering our main business activities: Design, Manufacture and Trade.

**Design:**

Provide Design & Engineering Solution to the construction sector, complying with international & local standards.

**Manufacture:**

Operating with Global Standards, we are widely recognized for our advanced light steel solutions and Hot-Dip Galvanization Facility.

**Trade:**

We are one of the region's largest Importer/Exporter of Building & Construction Materials

Unitech is an **ISO QMS 9001:2015** certified company and is a member of the US Green Building Council. Our experienced teams and operations are present across the Middle-East North Africa regions (MENA) and Pakistan, giving us an extensive regional network that benefits our clients and partners. We are also present in Europe via our design and engineering office in Stuttgart.

For more information, please visit: www.unitech-ikk.com

Mission & Vision

Mission

We have the conviction to be the leader in building & construction industry through:

- Providing excellence in services with passionate & educated sales force
- Strengthen culture through unified sense of purpose
- Innovative product range which is customer centric
- Reputable and quality service company
- Attracting, engaging and retaining talent

Vision

To be the Customer's First Choice...

Unitech Introduction

Unitech's strategy continues to focus on accelerating its business throughout the region, to service the construction sector via superior products & solutions, backed up by a group of highly experienced people in the field. Unitech also aims to enhance its geographical presence in its areas of interest and where opportunities exist.

We combine a deep understanding of building and construction materials markets with a successful history of upgrading our products and developing our processes. We have the qualified employees, the know-how and the products to service major construction projects, medium sized to mega projects taking in care our positive contribution to our societies.

We thrive towards excellence by acknowledging:



Customer
Satisfaction



Employee
Retention



Partner and Supplier
Relations



Positive Influence on
Society and Environment

Our Employees

We are a company that prides itself on its 'family' culture and we seek out high-caliber people. We are a company that has, at its core, a team philosophy that is clearly apparent each and every day - there is a real sense of being there for one another.

We believe in nurturing the skills of our team members and providing growing levels of responsibility. Our people bring unique skills, energy, expertise, experience and perspectives to our workforce.

Unitech's family of employees consists of experienced, well-motivated and dedicated team of engineers, technicians, sales executives and management staff. This team is committed to serve our customers, with the best solutions available in the market.

Our Journey 40+ Years of Excellence

Since 1979, having been set to become an independent company under the framework developed by Sheikh Isam Kabbani, Unitech started its journey of success with confidence and enthusiasm, hard work and care to detail and a commitment to become the best within its industry.

Its dedicated people could only imagine what the future could bring to this newly established entity. Unitech's journey of success has been marked with outstanding achievements and superior accomplishments. Year by year, Unitech has been acknowledged as the "First Choice for Building & Construction Material" by major construction consultants in the region, governmental authorities, well-known contracting and project development corporations.

We have obtained invaluable knowledge about the construction industry in general, providing specialized solutions to construction projects throughout MENA region. From a couple of outlets in Saudi Arabia, Unitech today is present all over the Kingdom and in several countries throughout the region providing its products and solution to various locations worldwide.



Est. 1979

THE BEGINNING

Unitech was established in the Western Region of KSA as a Sales Company selling basic construction material.

During the same year, another branch was established in the heart of the kingdom's capital, Riyadh.



1980 to 1989

AGE OF GREAT RISK

Unitech Dammam was open for business in the oil-rich eastern coast of Saudi Arabia.

Within these 10 years the idea of in-house manufacturing facility was born and Specialized Factory for Steel Products (SFSP) was established in Riyadh.



1990 to 1999

AGE OF GROWTH

Branches of Unitech were established in Makkah, Madina, Khamis Mushayt and Jubail.

The need to increase its range of products and the necessity to have production lines for mass production led to the decision to move the SFSP Factory from Riyadh to Jeddah.

Pioneering Construction Since 1979

We are constantly evolving in order to become more flexible in our operations, more sustainable in our societies, and more innovative in conducting our business.

By delivering superior products tailored to the specific construction needs, ambitious solutions, and an outstanding customer service, we serve today's needs through developing tomorrow's markets.

Helping construction projects experience success is what fueled its days. Unitech is keen to continue offering superior products, a wide spectrum of solutions, governed by our top-notch management style.

Such aspirations require trust in our responsibilities. Our Responsibilities for the future and with this in mind we continue to target excellence with committed efforts.



2000 to 2015

AGE OF CONSTRUCTION BOOM

Qassim, Hofuf and Yanbu Branches were inaugurated in KSA and branches outside KSA were established in UAE, Egypt, Lebanon, Oman, Jordan and Germany in order to facilitate the construction boom in the Middle East. During this period SFSP state of the art facilities were launched in DIC UAE and Unitech thrived, marking some of the best years in business.



2016 to 2019

AGE OF GREAT CHANGE

This period, marked the age of great change in order to align with the economic shift in the GCC and the world in general.

Company wide right sizing initiatives were taken especially in KSA to align with the kingdom's ambitious vision 2030 and during this period the upgraded SFSP state of the art facilities were launched in JIC 3 KSA.



2020 & Beyond

NEW FRONTIER

This period marks the expansion of Unitech into the South and Central Asian territories. We aim to cater these markets and play an active role in these countries development.

During 2020, Unitech Pakistan was officially inaugurated and marked the entrance of Unitech into Asian Market.

Our Manufacturing Arm SFSP



SFSP is a leading manufacturer and fabricator of light steel construction products in the region, servicing the construction sector through its state of the art facilities which are spread all over the MENA region. Products of SFSP are manufactured from quality raw material according to the relevant international standards to meet all kinds of construction projects requirements, such as MEP, façade, blockwork & waste management systems.

Commitment to Quality

Our commitment to quality is clearly revealed in the way we do our business; our processes, our close interaction with our clients as well as the strict product inspection procedures. To achieve this, we have implemented quality systems & processes that are continually being improved to satisfy our customer's needs.

Product Development

Product development process is substantial to the success of our business. We leverage all resources to provide up-to-date reliable products, environmentally friendly, durable to withstand the toughest weather conditions. Our engineers are constantly testing the products, seeking to present a combination of performance and quality across all our product ranges.

For more information, please visit:
www.sfsp-ikk.com

Value Chain

Our value chain starts up with the quality of the raw materials and ends up in client satisfaction. Our business practices backed up by all technologically essential business elements are supported by an efficient logistics, warehousing and delivery system that maintains a valuable supply chain for products.

The value chain is integrated in our business module, giving us strength and preserving our good reputation gained through the past 4 decades.

Engineering Specialty

Our products development engineers integrate their vast knowledge to provide the perfect solution to projects within the required specifications and timeframe.

The products development department maintains highly skilled calibers with a dedication towards efficient and reliable solutions even in the most complicated cases where delicacy and skillful approaches are indispensable.

Design and Product Safety

Our design and engineering office in Stuttgart ensures our products comply with relevant European and international standards of fabrication, taking into attention the safety factors which govern the public safety of projects.

Sustainability and Responsibility

We are constantly working hard to reduce our environmental footprints while maintaining the high quality and safety standards. We have set our targets to become three times more efficient in the next 10 years. Our responsibility towards our stakeholders is valued through our positive contributions towards our colleagues, our business partners and our communities as well.

Our Design Office

UNITECH DEUTSCHLAND is a "Design & Engineering" Office. Unitech Germany support Unitech & SFSP operations through well-informed cadre of engineers. They help our customers from conception to the completion by delivering design, engineering and project management services.



Thanks to our multidisciplinary team in Unitech Germany and their expertise, we assist you in your ambition to develop your innovation, your engineering and your organization. Our goal is to serve our clients through these elements:

- Excellent in engineering ideas and solutions
- High quality in performance
- Firmness on meeting deadlines



MEP Solutions

11 ► Cable Management System with Accessories

- 11 ► Cable Trays & Accessories
- 12 ► Cable Ladders (Welded & Swaged)
- 12 ► Basket Trays & Accessories
- 13 ► Cable Trunkings
- 13 ► Underfloor Trunkings
- 14 ► Fiberglass Reinforced Plastic (FRP) Cable Tray / Ladder
- 14 ► Cable Management Support Systems

- 15 ► C-Channels Strut Systems with Accessories
- 16 ► Pipe Clamps and Hangers with Accessories
- 17 ► PVC Electrical Conduits and Accessories
- 18 ► Mechanical Anchoring Systems
- 18 ► Chemical Anchoring Systems
- 19 ► Facade Insulation Fixings
- 19 ► Light Weight Fixings
- 20 ► Cable Fastening Systems (Cable Ties)
- 21 ► Galvanized Threaded Rods and Accessories
- 22 ► Access Panels & Roof Hatches

MEP Solutions

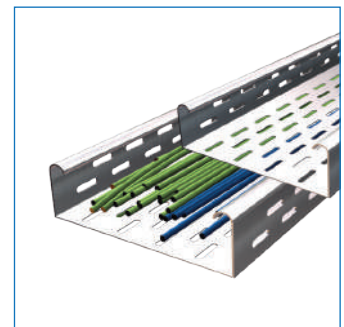


Cable Management Systems

Brand: SFSP

Cable Management Systems are economical and designed to meet most requirements of cable and electrical wire installations and comply to international standards of fabrication and finishing. The Cable Management System types, fittings and accessories from our factory (SFSP) are manufactured in compliance with :

- ▶ **IEC 61537:2006**
- ▶ **BS EN 61537:2007 International Electrotechnical Commission**
(Cable Management, Cable Tray Systems and Cable Ladder Systems)
- ▶ **SASO IEC (61537:2006) Saudi Standard**
(Cable Management, Cable Tray Systems and Cable Ladder Systems)
- ▶ **NEMA VE 1 - 2017 National Electrical Manufacturers Association**
(Metal Cable Tray Systems)
- ▶ **NEMA VE 2 - 2013 National Electrical Manufacturers Association**
(Metal Cable Tray Installation Guide Lines)
- ▶ **NEC (ANSI / NFPA 70) National Electric Code**
(Metal Cable Tray Guide Lines)



Cable Trays & Accessories

Brand: SFSP

Cable trays provide significant advantages in cable filling over other wiring methods, resulting in savings in the size or number of raceways required and reducing both material and labor costs

Material Thickness

1.0 mm, 1.20 mm, 1.50 mm, 2.00 mm

Side Heights

50mm, 75mm, 100mm

Available Widths

50, 100, 150, 200, 225, 300, 400, 450, 500, 600, 700, 800, 900, 1000 mm

Fittings

Bend 45°, Bend 90°, Intersection, Outside Riser Bend 45°, Inside Riser Bend 45°, Outside Riser Bend 90°, Inside Riser Bend 90°, Tee Branch, Reducer

Product Availability:

KSA, UAE, Bahrain, Kuwait, Oman, Lebanon, Egypt & Pakistan

MEP Solutions



Cable Ladders

Brand: SFSP

Rung Types (Swaged And Channel)

Material Thickness

1.50 mm, 2.00 mm, 2.50 mm and 3mm

Swaged Type (Aluminum & Steel)

Rounded tubular with 25 mm diameter

Rung standard spacing 229 mm

Channel Type (Steel)

Plain or slotted, and can be mounted upwards or downwards

Rung standard spacing 229 mm

Rail Types

C-Type, Z-Type and R-Type

Side Heights

150 mm, 225 mm, 300 mm, 450 mm, 600 mm, 750 mm, 900 mm

Fittings

Bend 45°, Bend 90°, Tee Branch, Horizontal Cross (Intersection), Inside Vertical Elbow (Inside Riser), Outside Vertical Elbow (Outside Riser), Straight Central Reducers, Right Hand Reducers, Left Hand Reducers.



Basket Trays & Accessories

Brand: SFSP

Basket Tray System enables fast and simple connections with limited need for tools. Its design allows continuous airflow, and prevents the buildup of dust, contaminants and bacterial proliferation.

Wire (dia.)

4 mm

Side Heights

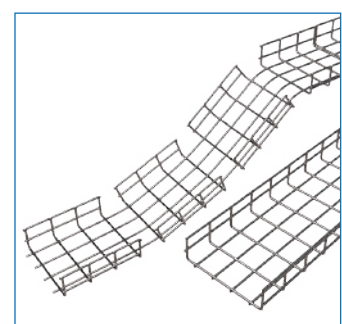
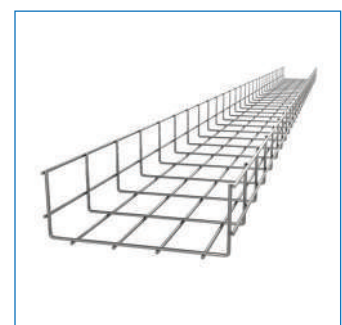
55mm, 80mm, 105mm, 150mm

Available Widths

50 mm, 100 mm, 150 mm, 200 mm, 300 mm, 400 mm, 500 mm, 600 mm

Fittings

90° Bends, Outside Inside Bends, Vertical Inside Bends, Horizontal Tees (Cross), Reducers - Central Reducers, Left & Right Reducers



Product Availability:

KSA, UAE, Bahrain, Kuwait, Oman, Lebanon, Egypt & Pakistan

MEP Solutions



Cable Trunkings

Brand: SFSP

Cable Trunkings are used to protect cables from damage & dust are square in shape. Our cable trunkings system comes in a variety of thickness and sizes and is available in three types: Single, double, and triple compartments

Available Thicknesses

1 mm, 1.2 mm, 1.5 mm

Length

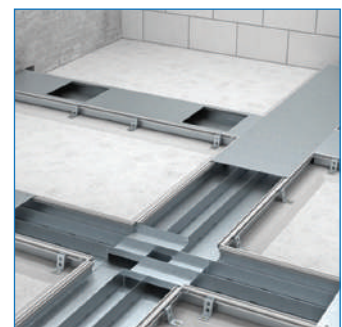
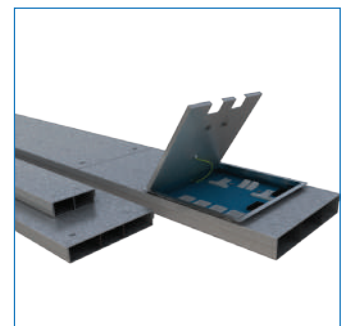
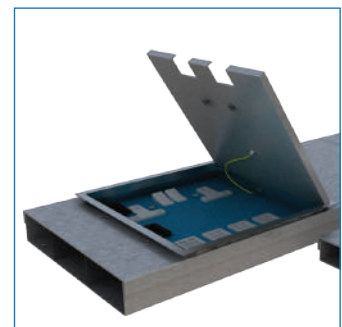
2400 mm and 3000 mm

Fittings

Bend 45° Top Lid, Bend 45° Inside Lid, Bend 45° Outside Lid, Bend 90° Top Lid, Bend 90° Inside Lid, Bend 90° Outside Lid, TEE Bend Top Lid, TEE Bend Inside Lid, TEE Bend Outside Lid, Intersection, Reducers

Dimensions

- ▶ 50 x 50 mm
- ▶ 75 x 75 mm
- ▶ 100 x 50 / 75 / 100 mm
- ▶ 150 x 50 / 75 / 100 / 150 mm
- ▶ 200 x 100 mm
- ▶ 300 x 100 mm
- ▶ 450 x 100 mm
- ▶ 600 x 100 mm



Underfloor Trunkings

Brand: SFSP

This solutions incorporate a range of products for the distribution of power & data services, it is a coordinated set of containments that protect, segregate, contain & route cables within a given environment

Flush Floor Trunking System includes

Trunking / End Cap / Junction box / Coupler & Leveling Kit / Fixing Bracket & Leveling for Trunking / Leveling for Junction Box / Riser / Floor Box (Support Plate + Lid & Trim)

Screed Floor Trunking System includes

Ducting / Coupler / Junction Box / Fixing Bracket / Vertical Trunking such as DLP / Riser / Floor Box (Back-Box + Lid and Trim)

Socket outlets and data sockets plates to be ordered separately.

Product Availability:

KSA, UAE, Bahrain, Kuwait, Oman, Lebanon, Egypt & Pakistan

MEP Solutions



Fiberglass Reinforced Plastic (FRP) Cable Tray

Brand: SFSP

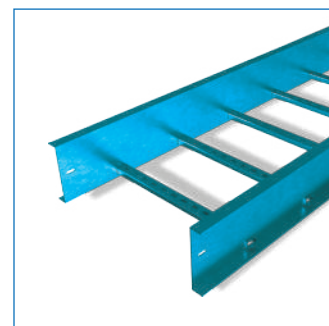
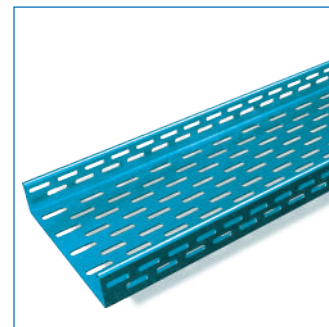
SFSP Fiberglass Reinforced Plastic (FRP) Cable Management Systems are designed, manufactured, and tested to be installed in most harsh environmental conditions of onshore and offshore facilities for several industries including Oil and Gas, Petrochemicals, Manufacturing, Mining and others.

- FRP Cable Trays & Accessories
- FRP Cable Ladder & Accessories
- Related Hardware & Fittings

These products are manufactured in conformance with NEMA FG-1. The Cable Management items are available in 3 colors: Grey, Blue & Yellow.

Production Time & Delivery Period for these products are listed below:

Origin	Quantities	Production Time	Logistics Period
Malaysia	1000 Mtr.	4 Weeks	6 Weeks
Malaysia	1000 - 2000 Mtr.	6 Weeks	6 Weeks
Malaysia	2000 - 5000 Mtr.	8 Weeks	6 Weeks
India	1000 Mtr.	2 Weeks	4 Weeks
India	1000 - 2000 Mtr.	3 Weeks	4 Weeks
India	2000 - 5000 Mtr.	4 Weeks	4 Weeks



Cable Management Support Systems

Brand: SFSP

Cable Management Support Systems are well designed to provide necessary support for cable trays, cable ladders and trunkings. Cable supports are manufactured according to common standards from high quality raw materials

Cantilever Arm Bracket (Sizes)

41x21x2.5 mm / 41x21x2.5 mm B2B / 41x41x2.5 mm B2B

50x20x2.5 mm / 50x25x2.5 mm / 50x20x2.5 mm B2B / 50x25x2.5 mm B2B

U - Support with Welded-On head plate

I - Support with Welded-On head plate

U - Support Wall Bracket

I - Support Wall Bracket



Product Availability:

KSA, UAE, Bahrain, Kuwait, Oman, Lebanon, Egypt & Pakistan

MEP Solutions



C Channel Strut System

Brand: SFSP

C-channel metal framing is cold formed on modern rolling machines from low carbon steel manufactured according to **BS 6946:1988**.

A continuous slot provides the ability to make attachments at any point.

Finishes

Pre-Galvanized, Hot Dip Galvanized and Stainless Steel

Thicknesses

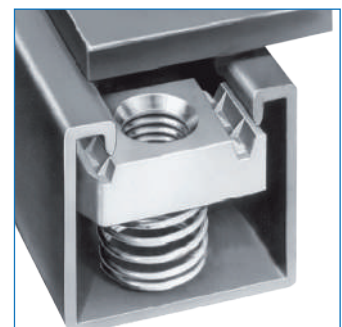
1.5, 2.0, 2.5 mm

Channel Dimensions & Thickness

Height "H"	Width "W"	Thickness
21.0 mm	41.0 mm	1.5 mm
41.0 mm	41.0 mm	1.5 mm
21.0 mm	50.0 mm	1.5 mm
21.0 mm	41.0 mm	2.0 mm
41.0 mm	41.0 mm	2.0 mm
25.0 mm	50.0 mm	2.0 mm
21.0 mm	41.0 mm	2.5 mm
41.0 mm	41.0 mm	2.5 mm
25.0 mm	50.0 mm	2.5 mm

Types of C Channel Strut Systems

- ▶ PT Plain Type
- ▶ ST Slotted Type
- ▶ B2B Type
- ▶ Cantilever Arm Brackets - SCA (41x21x2.5 & 41x41x2.5)
- ▶ Cantilever Arm Bracket B2B - SCA (41x21x2.5 B2B & 41x41x2.5 B2B)



Product Availability:

KSA, UAE, Bahrain, Kuwait, Oman, Lebanon, Egypt & Pakistan

MEP Solutions



Pipe Clamps & Hangers

Brand: SFSP

Pipe Clamps and Hangers are used in the support of pipes and equipment are manufactured according to the highest standards of fabrication.

A diversified choice of Pipe Hangers, Pipe Clamps, EMT Straps, Omega Clamps, Beam Clamps, J and U-Bolts and Threaded Accessories.

Applicable Standards

BS 3974

Specifications for pipe hangers and support

ASTM F 708

Standard practice for design and installation of rigid pipe hangers]

Federal Specifications

WW-H-171 E (Hanger and Support)

A-A-1192 A (Bracket, Pipe)

ANSI/MSS SP-58

Pipe Hangers and Supports - Materials, Design, Manufacture, Selection, Application and Installation

MSS SP-69

Pipe Hangers and Support-Selection and Application

MSS SP-77

Guidelines for Pipe Support Contractual Relationships

MSS SP-89 Pipe

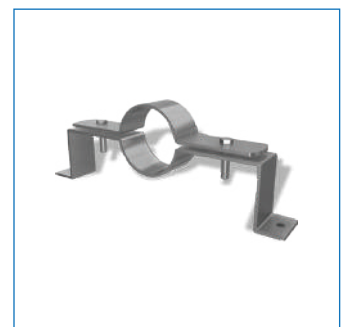
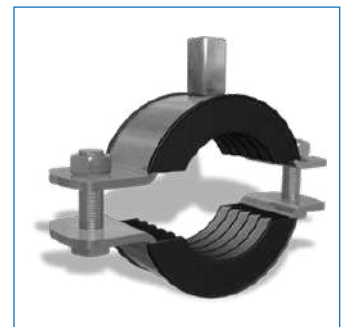
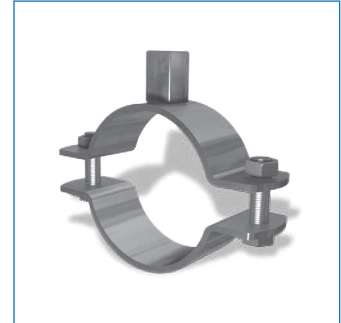
Hangers and Support-Fabrication and Installation Practices

MSS SP-90

Guidelines for Terminology for Pipe Hangers and Support

MSS SP-127

Bracing for Piping Systems Seismic - Wind - Dynamic Design, Selection, Application



Product Availability:

KSA, UAE, Bahrain, Kuwait, Oman, Lebanon, Egypt & Pakistan

MEP Solutions



PVC Electrical Conduits & Accessories

Brand: Uniduct | Manufactured in: IKKPF

UNIDUCT products are produces electrical cable management, conduit pipes and fittings as per Saudi, British & American standards.

UNIDUCT products meet the highest local and international standards. The modern manufacturing equipment and our expertise in plastic processing ensures that the utmost product standards and quality is maintained for all the items that are produced. Uniduct is dedicated in catering and delivering to our customer needs and strive hard in providing the right products at the right time.

Uniduct Product Markings

UNIDUCT conduit pipes and fittings meet the requirements prescribed by the following standards organizations: **SASO, BS, NEMA and ASTM.**

Our PVC pipe conduit range in straight runs of 2.9, 3, 6 meters are marked with standards specification requirements, logo, product name, standard, schedule/class, country of origin, manufacturer name, and a unique batch number that ensures traceability tracking and quality control.

Material Properties & Characteristics

UNIDUCTS products are non-flame propagating, combustion proof with good insulation properties having high anti-current puncture proof and lower thermal conductivity than that of metals. The products are also impact resistant, moisture proof, acids and alkalis-resistant and rust-free.

Since PVC conduit pipes have no smell to attract rodents, it does not cause any kind of biotic attacks. Easy to install and maintain with complete range of solvent cement fabricated electrical fittings, light in weight with a specific weight which is about one fifth of the steel pipe, resulting in a drop-down on the transportation cost, and facilitating pipes installation.

Our Product Range includes:

- ▶ Conduits
- ▶ Tubings
- ▶ Ducts
- ▶ Split Duct
- ▶ Long Radius Bends
- ▶ Coupling
- ▶ Bell Ends
- ▶ Plastic Pipe Cement (Weld On)

Product Availability:

KSA, UAE, Bahrain, Kuwait, Oman, Lebanon, Egypt & Pakistan



MEP Solutions

Mechanical Anchors

Brand: Rawlplug

Our mechanical anchors are designed to install easily and securely into a variety of base materials – from concrete to brick. They offer optimal performance even in the most demanding structural applications. For applications where there is a risk of concrete cracking, specific anchors have been designed and tested to offer reliability under these conditions.

Our Range Includes:

Heavy Duty Expansion Anchors

These anchors are suitable for demanding safety-critical applications

Shield Anchors

The worlds most popular all-purpose expanding shield anchor for use in cracked and non-cracked concrete

Throughbolt Anchors

These anchors are designed to be used in cracked and non-cracked concrete

Internally Threaded Anchors

Internally threaded drop in anchors for simple hammer-set installation

Concrete Screw Anchors

Self-Tapping and removable concrete screw anchors for through-fixing installation

Chemical (Bonded) Anchors

Brand: Rawlplug

Commonly referred to as chemical anchors or resin anchors they can be split into two main groups: capsule systems and injections systems. Both systems consist of two chambers, one filled with a polymer resin and the other with a hardener. Various resin types are available in each system from Polyester to Vinylester and Epoxy. These bonded anchors are offered in wide range of systems and these are Glass Capsules, Cartridges and Foils.

The Accessories available for the bonded anchoring systems are:

- ▶ Studs & Sockets (ITS)
- ▶ Hole Brushes
- ▶ Holepumps
- ▶ Dispensers

Product Availability:

KSA, UAE, Bahrain, Kuwait, Oman, Lebanon, Egypt & Pakistan

RAWLPLUG®



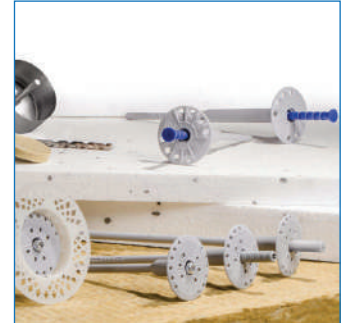
MEP Solutions

Facade Insulation Fixings

Brand: Rawlplug

Thermal Insulation Roofing Fixings are designed to be used on roofs with an inclination of up to 15 degrees. Various types of screw are available in the our range for fixing to trapezoidal metal sheet, concrete or timber. Similar to facade fixings for insulation, the fixings have a large circular or oval head to distribute and resist wind suction loads. This range includes Screw-in Facade Fixings, Hammer-in Facade Fixings, Insulation Washers, Insulation Retaining Plates and Steel Insulation Washers.

RAWLPLUG®



Light Weight Fixings

Brand: Rawlplug

The range of light weight fixings consist of:

Plastic Frame Fixing

Universal frame fixing for installation of door and window frames and many more applications



Metal Frame Anchor

These Anchors are used for distortion-free fixing of metal frames, directly through the fixture of the substrate



Ceiling Wedge Anchor

Cost-effective anchor for fixing lightweight ceilings and suspended ceilings to solid building materials

Metal Hammer Fixing

Lightweight metal anchor consisting of a zinc alloy expanding body with hammer-in steel pin. For light duty fastenings in concrete and masonry.

Hammer In Fixings

This fixing with mushroom head is for fast, simple and cost effective installations. Type of Screw heads include: Cylinder, Mushroom and Counter Sunk.



Universal Plug

High Performance universal nylon plug which expands on solid materials and forms a reliable knot formation in all cavities.



Product Availability:

KSA, UAE, Bahrain, Kuwait, Oman, Lebanon, Egypt & Pakistan

MEP Solutions

Cable Ties

Brand: Elematic

Cable Ties Standard

Technical cable ties, in polyamide 6.6, for professional application. Guaranteed quality and performances by numerous approvals according to different international product standard

Cable Ties 2-Lock

Professional cable ties, in polyamide 6.6, having an innovative double locking system in stainless steel: maximum performance and reliability. The special AISI 316 stainless steel locking system, directly incorporated into the head during the injection manufacturing process.

Belturing Cable Ties

Outside serrated cable ties with low profile head and manufactured with UV-resistant polymer. For high resistance outdoor application

Colspeed Cable Ties

Outside serrated cable ties with low profile head. Manufactured in polyamide 6.6, allow installation without any tool.

UV Resistant Cable Ties

Technical cable ties, in polyamide 6.6 uv-resistant, suitable for outdoor applications.

Heat Resistant Cable Ties

Technical cable ties, suitable for high temperature applications, up to 150°C. High temperatures resistance: up to 125°C in continuous, up to 150°C for 500h.

Detectable Cable Ties

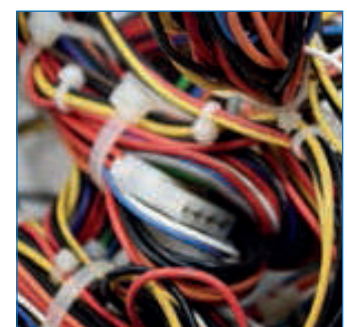
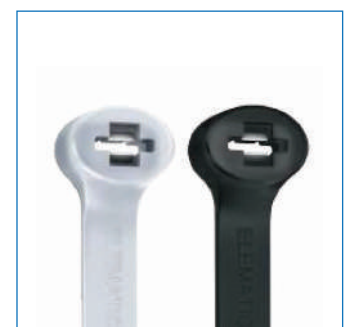
Detectable cable ties for food and pharmaceutical industries, The inclusion of an iron oxide additive in the polyamide material enables cable ties or related small sections to be detected by the metal detectors or X-ray inspection systems.

Colored Cable Ties

Technical cable ties, in colored polyamide 6.6, for an easy identification or differentiation. Available in four colors: red, yellow, green, blue.

Identification (Trasversal / Longitudinal Plate) Cable Ties

Technical cable ties with transversal/longitudinal identification plate allow bundles and cabling to be easily marked and identified.



Product Availability:

KSA, UAE, Bahrain, Kuwait, Oman, Lebanon, Egypt & Pakistan

MEP Solutions



Galvanized Threaded Rods and Accessories

Brand: SFSP

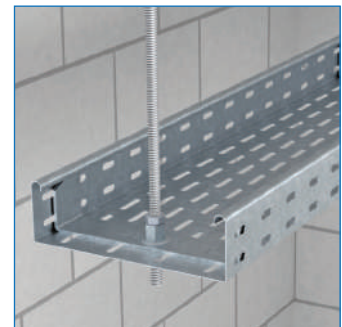
Threaded rod, often referred to as a stud, is a rod of varying length that is threaded in a helical structure. Similar in appearance to a screw, the threading extends around and along the rod to cause rotational movements when in use. Threaded rods combine linear and rotational movement to create strong resistance to pressure.

Threaded rods have many applications, effectively working as a pin to fasten or connect two materials together. There are several types of threaded rod that we supply and each is suited for different purposes, conditions and materials. They are often used to align structures or are embedded into materials, like concrete, as the threading provides good resistance.

The fully threaded rod that we supply are usually used when effective grip strength is required through the entire length of the rod. Our threaded rods are usually heavy-duty galvanized zinc-plated or stainless steel.

Threaded Rod Length & Load Capacity

Size	Length (mm)	Load Cap. (kN)
M6	2000 / 3000	2.2
M8	2000 / 3000	4.0
M10	2000 / 3000	6.4
M12	2000 / 3000	12.9
M16	2000 / 3000	17.3
M18	2000	22.0
M20	2000	27.0



Product Availability:

KSA, UAE, Bahrain, Kuwait, Oman, Lebanon, Egypt & Pakistan

MEP Solutions



Access Panels

Brand: BMG

Gypsum Board Access Panels - Hook Type

The Hook Type has powder coated extruded aluminum alloy frame, 6063-T6, with hook profiles, touch latch and safety chain. It is assembled with regular, moisture or fire resistant gypsum boards.

Gypsum Board Access Panels - Pivot Type

Gypsum Board Access Panel - Pivot Type is built with powder coated extruded aluminum alloy frame, 6063-T6, with pivot pins and end connectors. Installed with regular, moisture or fire resistant gypsum boards.

Tiled Access Panels

This type of access panel has been designed for areas where it is required to be discretely installed into a tiled wall. It is constructed with 1.20 - 1.50mm thick steel frame and client's ceramic tiles.

G.I. Access Panels

Designed for wall and ceiling applications, this fire rated Access Panel is made of 1.20-1.50mm thick sturdy lightweight steel frames, concealed hinges and locks. Available with exposed or concealed flange or beaded frame for a flushed finish.

Stainless Steel Access Panels

Stainless steel access panels are designed to ensure a flush surface throughout for cleanroom application. These are designed to be easily cleaned with tight smooth joints to the ceiling and wall finishes. Uses Type 304/316 L Stainless Steels which are extremely resistant to corrosion.

Roof Hatches

Brand: BMG

Roof hatch provides safe and convenient access to commercial building roof areas using interior ladders and stairs for maintenance work. It can be installed on flat roofs with a maximum slope of 30°. Made of steel frames, doors and stainless steel hardware. Powder coated to provide corrosion resistance and outstanding exterior durability.



Product Availability:

KSA, UAE, Bahrain, Kuwait, Oman, Lebanon, Egypt & Pakistan



Architectural & Finishing Solutions

- 24 ➤ Mechanical Cladding Fixation (Stangle)
- 25 ➤ Waste Management Systems (Garbage & Linen Chutes)
- 26 ➤ Drywall & Ceiling Profiles
- 26 ➤ Metal Ceiling Grid System
- 27 ➤ Architectural Expansion Joints
- 28 ➤ Tile Movement Joints
- 28 ➤ Wall Profiles
- 28 ➤ Stair Nosing
- 29 ➤ Entrance Matting System
- 30 ➤ Phenolic Partition Systems
- 31 ➤ Raised Access Floor System
- 33 ➤ Impact Protection Systems
- 34 ➤ Handrails
- 35 ➤ Metal Ceilings
- 36 ➤ Acoustical & Decorative Ceilings
- 37 ➤ Steel Doors
- 38 ➤ Gypsum System
- 39 ➤ Gypsum Boards & Accessories
- 40 ➤ Cement Boards and Accessories
- 41 ➤ Insulation Systems (Saudi Rockwool)
- 42 ➤ Insulation Systems (KIMMCO / SIIMCO)

Architectural & Finishing Solutions



Mechanical Cladding Fixation (Stangle)

Brand: SFSP

Stangle Cladding Fixation includes design, calculation and production of several types of mechanical fixings and accessories used for cladding purposes. Stainless and galvanized steel are among the various materials used in the fabrication.

Standards

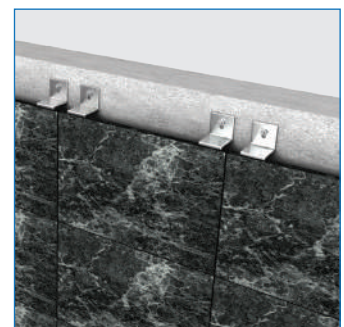
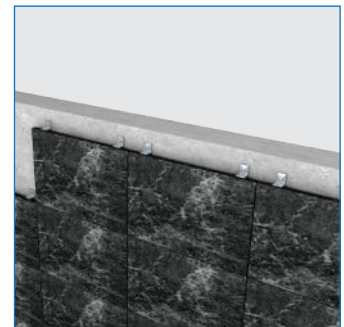
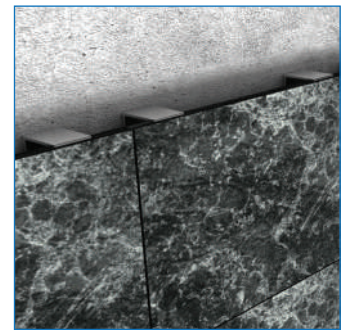
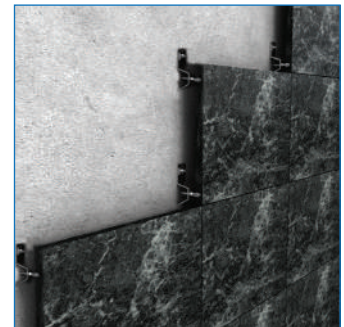
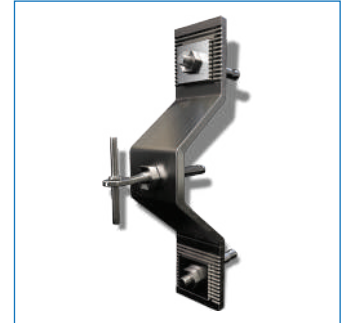
- ▶ ASTM A276 / A276M
- ▶ ASTM A666 - 15
- ▶ BS 8298-1:2010
- ▶ BS 1449-1.1:1991
- ▶ BS EN ISO 3506-1:1998
- ▶ BS 5950-1:2000
- ▶ BS EN 1991-1-4:2005+A1:2010
- ▶ BS EN 10277:2018
- ▶ DIN EN 1992-1-1: 2013
- ▶ DIN EN 1992-3: 2011
- ▶ DIN 1053-4: 2018
- ▶ DIN 18516-3: 2018
- ▶ DIN EN 1994-1-1: 2010
- ▶ DIN EN 1993-1-1: 2017-09

Material

- ▶ SS304
- ▶ SS316
- ▶ SS316L
- ▶ SS316TI
- ▶ S235JR-MG
- ▶ S235JR-HDG

Brackets

- ▶ L - Bracket (Standard & Serrated)
- ▶ L - Bracket (Standard & Serrated) Up Angle
- ▶ L - Bracket (Standard & Serrated) Down Angle
- ▶ L - Bracket (Standard & Serrated) Up and Down Angle
- ▶ Z - Bracket with Back Leg
- ▶ Omega Bracket
- ▶ Fishtail Up & Down
- ▶ Fishtail with Pin
- ▶ Load bearing and restraining corrugated stud



Product Availability:

KSA, UAE, Bahrain, Kuwait, Oman, Lebanon, Egypt & Pakistan

Architectural & Finishing Solutions



Waste Management Systems (Garbage & Linen Chutes)

Brand: SFSP

Chutes are very convenient, simple and low cost method of controlling and disposing of refuse and linen. SFSP Chutes meet the most stringent requirements of environmental health and safety. Chutes are used as original equipment in new buildings, such as: Hotels, Hospitals, High Rises and Residential Towers.

Finishes

- ▶ SS 304
- ▶ SS 316
- ▶ GI Galvanized Steel

SFSP provides the following material gauges

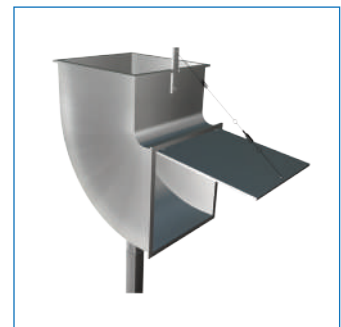
- ▶ 1.5mm (16 Gauge)
- ▶ 2.0mm (14 Gauge)
- ▶ 3.0mm (11 Gauge)

SFSP chutes are available with the following standard internal diameters

- ▶ 500mm (20")
- ▶ 550mm (22")
- ▶ 600mm (24")
- ▶ 700mm (28")
- ▶ 800mm (32")
- ▶ 900mm (36")

The System includes the following

- ▶ Chute Tube
- ▶ Intake Throat
- ▶ Hopper Door
- ▶ Clamp Ring & Supporting Frame
- ▶ Access Door
- ▶ Elbow
- ▶ Fire Cut Off Door
- ▶ Control Panel
- ▶ Disinfecting & Sanitizing Unit
- ▶ Solenoid Valve
- ▶ Tube with Insect Screen & Exhaust Fan
- ▶ Cleaning System & Brushing Device
- ▶ Cleaning & Fire Sprinklers
- ▶ Garbage Container Sorters
- ▶ Compactor



Product Availability:

KSA, UAE, Bahrain, Kuwait, Oman, Lebanon, Egypt & Pakistan

Architectural & Finishing Solutions



Drywall & Ceiling Profiles

Brand: SFSP

Gypsum Boards are considered among the most economic and ideal way for wall partitioning. Easy to install, saves time and money, gypsum boards can be used as a backing for wall treatments such as wall paper, fabric, tile and wood paneling or it can simply be painted. SFSP provides a complete product range for drywall and ceiling constructions. Studs, Runners, Furring Channels, Ceiling Channels, and Wall Angles are among the range of products produced according to relevant international standards to service the dry wall installers.

Type of Profiles for Dry Wall

- ▶ Studs
- ▶ Runners
- ▶ Ceiling Channels
- ▶ Omega Channels
- ▶ Deflection Track
- ▶ Shaft Wall Track

Type of Profiles for Ceiling

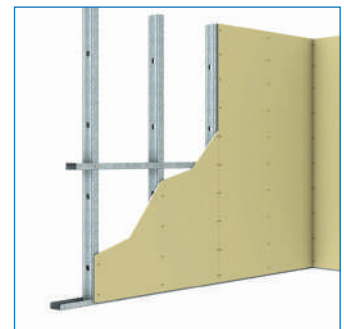
- ▶ Main Ceiling Channel
- ▶ Furring channels
- ▶ Wall Channels

Metal Ceiling Grid System

Brand: SFSP

SFSP Ceiling Grid System is a practical, convenient ceiling system. It has a complete range of main c-channel sections and complementary parts so that you can adapt the modules to suit your design needs and load requirements. The design of SFSP Ceiling Grid System components ensures easy seemly, reliability, and the ability to be adjusted or replaced without damage. All components have been designed and tested by SFSP engineers to meet the requirements of ceiling grid support systems. SFSP main c-channel is cold formed on modern rolling machines from low carbon steel manufactured according to BS 6946:1988. With a continuous slot type, it provides the ability to make attachments at any point.

The Types of Ceiling Grid Systems include Standard Ceiling / Advanced / Extreme / Back To Back Ceiling Grid System



Product Availability:

KSA, UAE, Bahrain, Kuwait, Oman, Lebanon, Egypt & Pakistan

Architectural & Finishing Solutions

NEXUS

Architectural Expansion Joints

Brand: NEXUS | Manufactured in: SFSP

Nexus Expansion Joint Solutions offer comprehensive ranges of durable Expansion Joint Solutions for a wide array of applications including commercial centers, shopping malls, railway stations, airports, bridges, schools, hospitals, and several other areas of application.

Our range of Expansion Joint Solutions are designed to safely absorb the heat-induced expansion and contraction of concrete slabs, to absorb vibration, and to allow movement due to ground settlement or earthquakes.

Our variety of expansion joints includes profiles for walls and floor, for pedestrian as well as heavy loads traffic, for seismic movements, and several other uses. Nexus Expansion Joint Solutions include aluminum profiles, rubber profiles, and a combination of aluminum profiles with rubber inserts.

Nexus Expansion Joint Solutions are designed to conceal areas of structural movement. Concrete Slabs are designed to move due of pressures from long-term shrinkage, thermal expansion, contraction of the structure and seismic activity.

Our floor expansion joint systems are suitable for applications with joint openings of several width, and up to 400 mm. Our Expansion Joint Solutions require minimum maintenance works throughout the year.

Selection Criteria for Expansion Joint Solutions Movement

When designing the building, there are three main types of movement to consider:

Thermal

Changes in temperature cause buildings to expand and contract which can leave broken flooring components resulting in damage to the building structure and design.

Seismic

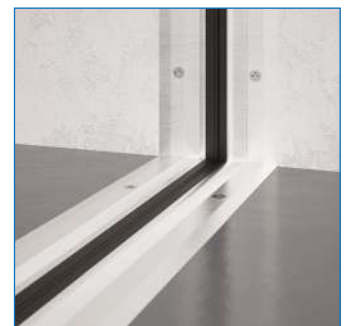
Earthquakes and seismic events cause movement and swaying for the architectural structure. Larger joint widths are suitable for buildings that are located in seismic zones.

Wind Sway

Tall buildings and structures with a large surface area are affected by wind sway that pushes against the building and causes tilt or swaying motions. Expansion Joints plays a vital role in safeguarding these buildings by permitting the structure to absorb these movements.

Product Availability:

KSA, UAE, Bahrain, Kuwait, Oman, Lebanon, Egypt & Pakistan



Architectural & Finishing Solutions

NEXUS

Tile Movement Joints

Brand: NEXUS | Manufactured in: SFSP

NEXUS Manufacture Tile Movement Joints that are used on floors to protect tile edges and to accommodate movements and local stresses. Using tile joints is a suitable and economic solution to avoid problems related to the fixing tiles. Sealants are used for the economic viability and easiness in application and due to their poor load bearing capacity, sealants often fail resulting in cracks and fissures along the line of application. Tile Movement Joints are best suited replacement for such situations and suitable for use with Ceramic, Terrazzo, Marble, Stone and other similar materials.

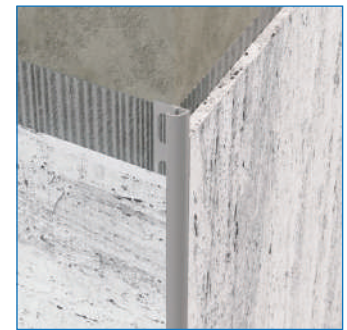


Wall Profiles

Brand: NEXUS | Manufactured in: SFSP

Nexus wall profiles offer modern solutions and guarantee finishing to the highest standard in all kinds of environment. Wall profiles come in different materials, shapes and finishes to suit the architectural space where they are used and to meet specific installation needs.

Our right angle and round profiles are ideal for protecting the inside and outside corners of walls, for finishing edges, linking treads and risers on stairs covered in ceramic tile or natural stone, and as decorative strips in floors and walls.



Stair Nosing

Brand: NEXUS | Manufactured in: SFSP

Nexus Stair Nosing help to make a stairway safe. As a slip resistant stair part fitted onto the nose of each step, they help to clearly define the steps on a stair when a contrasting color to the stair floor covering is chosen.

They also serve to protect the edges and floor covering on a stair, reducing the amount of potential wear and tear.

The correct stair nosing for a given application depends on several factors. Gauge (thickness) of stair floor covering, shape to match step profile, dimensions, tread cover, color and LRV difference.



Product Availability:

KSA, UAE, Bahrain, Kuwait, Oman, Lebanon, Egypt & Pakistan

Architectural & Finishing Solutions

NEXUS

Entrance Matting System

Brand: NEXUS | Manufactured in: SFSP

Entrance mats Reduce dirt and moisture and are perfectly suited for the busiest areas Their high dirt absorption rate and slip-resistant rubber backing make these mats the perfect solution for use in business entrances, receptions and where great levels of pedestrian traffic is causing dirt and moisture.

Nexus Entrance matting systems provides heavy duty entrance mats composed of aluminum profiles with a carpet, brushes or rubber inserts. The combined actions of these materials perform as a dirt barrier preserving the cleanliness of the facility's flooring.

Our durable matting systems provide the most suitable solution for removing, absorbing and retaining dirt and moisture. Our mats are manufactured from high quality raw materials to withstand heavy traffic in the busiest areas of each facility.

Our matting systems are easily maintained and serviced, and are built to last longer. Unlike other kinds of matting, Nexus entrance mats are very comfortable and silent. They have been designed to avoid problems with heels and are suitable for wheeled traffic such as wheelchairs, babies prams and pushchairs.

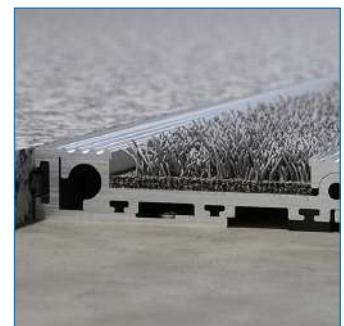
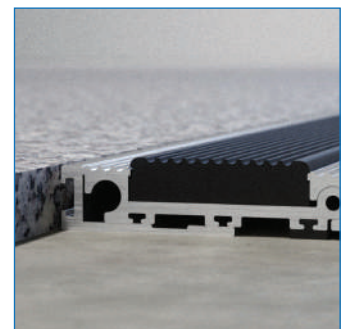
NEXUS Entrance Matting system is engineered to withstand heavy footfall, our range can be used in airports, shopping centers, supermarkets, department stores, cinemas, universities, healthcare centers, schools and universities, and is ideal for applications where performance under the severest of traffic conditions is required.

Types & Standards (Anti Slip Heavy Duty)

- ▶ URFM 16 Aluminum-Rubber Profile
- ▶ UCFM 16 Aluminum-Carpet Profile
- ▶ URFM 24 Aluminum-Rubber High Profile
- ▶ UCFM 24 Aluminum-Carpet High Profile
- ▶ UAFM 17 Aluminum Profile

Product Availability:

KSA, UAE, Bahrain, Kuwait, Oman, Lebanon, Egypt & Pakistan



Architectural & Finishing Solutions



Phenolic Partition Systems

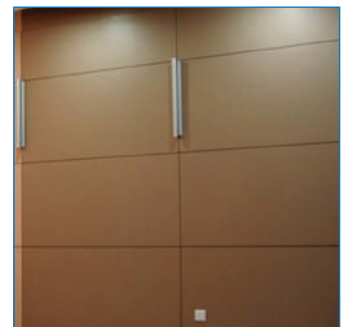
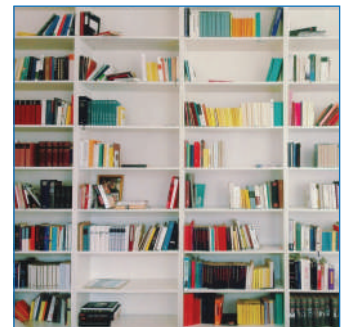
Brand: Cubix Toilet Partitions

CUBIX phenolic compartment and partition systems are manufactured and customized to meet the precise needs of simple to complicated projects with its top-notch finish, quality of material and within a timely delivery. A complete solution with a wide selection of colors and textures are available. Our panels are manufactured from Black Phenolic covered with HPL panels to withstand harsh utilization conditions, while accessories are installed in stainless-steel finish; Gravity hinges, indicators Rosette, Lock set, Knob, Coat Hook, Pedestal leg, tissue holder, Stainless Steel brackets and channels, Stainless steel Strips.

CUBIX phenolic compartment and partition systems provide strength, durability and design flexibility. These compartments offer 40 standard color selections and a choice of finishes.

Our systems are suitable for high traffic public buildings, malls, entertainment centers, gyms and sports, educational and healthcare, sports facilities, etc

- ▶ Kitchen Cabinets, Drawers, Platforms and Decorative Edges
- ▶ Wall to Wall Cabinets & Tables.
- ▶ Tables & Chairs (Restaurants, Schools, Colleges, Cafe, etc.)
- ▶ Outdoor Tables & Benches suitable for Resorts
- ▶ Bookshelves with various customized Designs & Color Combinations
- ▶ Wall to Wall Full Sized Shelves
- ▶ Internal Cladding (Designed with support systems)
- ▶ External Cladding (Housing, Villas, Restaurants, Food Chains etc.)
- ▶ Lockers (Gymnasiums, Factories & Recreation Centers etc.)
- ▶ Shoe Rack (Gymnasiums, Factories & Recreation Centers etc.)



Product Availability:

KSA, UAE, Bahrain, Kuwait, Oman, Lebanon, Egypt & Pakistan

Architectural & Finishing Solutions



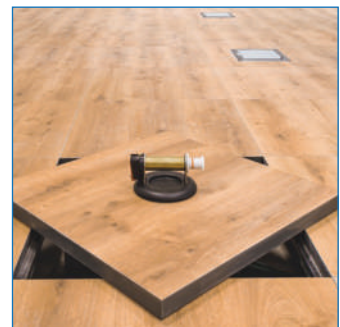
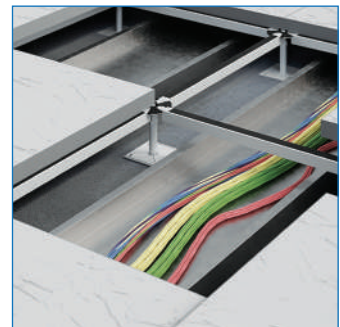
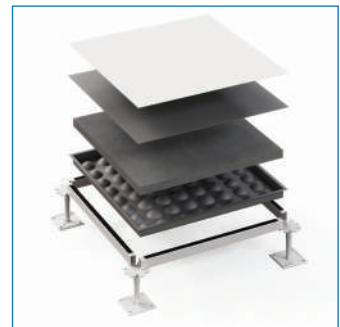
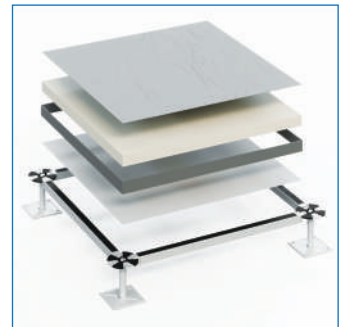
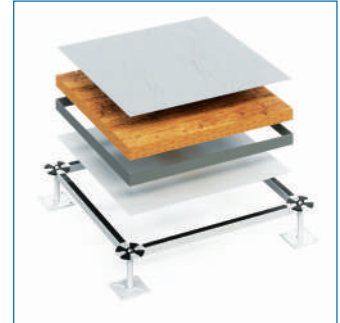
Raised Access Floor System

Brand: Pixel Access Flooring

PIXEL Raised Access Flooring offers comprehensive solutions of High Tech Raised Access Flooring Systems for the construction industry.

PIXEL Raised Access Flooring are manufactured according to most common international standards to meet the requirements of commercial, residential, governmental, transportation, healthcare, and educational projects.

In addition to its wide array of Raised Flooring panels and variety of finishes, PIXEL provides the technical expertise via its qualified and dedicated team of engineers and industry-experts in the field. PIXEL range of products is manufactured from high quality raw material and designed to meet all International Standards.



Product Availability:

KSA, UAE, Bahrain, Kuwait, Oman, Lebanon, Egypt & Pakistan

Architectural & Finishing Solutions

Raised Access Floor System

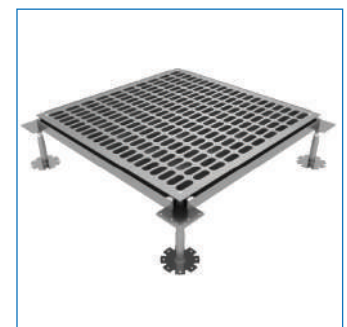
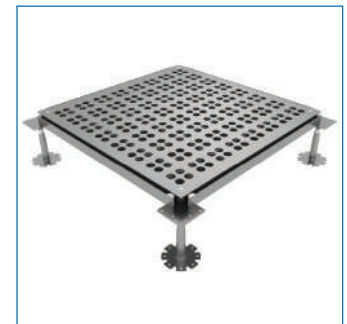
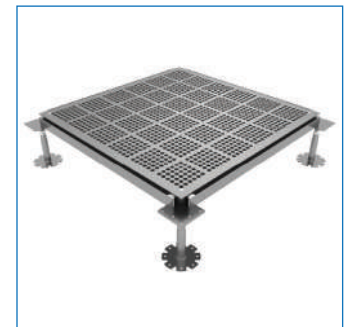
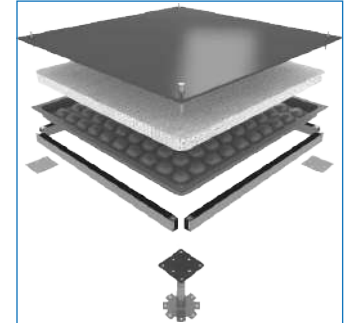
Brand: Tate / PolyGroup / Apsilon

Raised Access Floorings are used for general offices, call centers, computer rooms, pumping stations, control rooms, etc. The core of the panel is either from wood, calcium sulphate, or cementitious composite providing excellent lateral stability along with easy access for low, medium and heavy-duty applications with adjustable pedestals. Stringered or stringerless understructure with various types of coverings are available including high-pressure laminate panels.

Advantages of using a Access Floor System

- ▶ The ease access to the building installations from any place at the elevate floor.
- ▶ Power, energy, communication and data base systems can be housed at the plenum.
- ▶ Tiles allow changes in the distribution of the areas at the building according to the customer needs.
- ▶ The possibility of raising the system over a meter allows the leveling of the rooms at different heights.
- ▶ Highest heavy-load capacity systems that allow heavy equipment to rest on without the need of benches or any other supporting tool.
- ▶ There is an infinite number of finishes that can be used in the raised access floors, such as:
 - ▶ Light Finishes HPL
 - ▶ Granite
 - ▶ Porcelain
 - ▶ Natural wood
 - ▶ Carpet
 - ▶ Stainless steel
- ▶ This facilitates the possibilities of adaptation to the decoration and colors of the areas in which these are applied.
- ▶ It is a system characterized by its stability and durability, making it easier to make modifications rather than in normal floors.

POLYGROUP | Tate



Product Availability:

KSA, UAE, Bahrain, Kuwait, Oman, Lebanon, Egypt & Pakistan

Architectural & Finishing Solutions



Impact Protection Systems

Brand: U-GUARD

U-Guard provides the most suitable way to protect your facilities from damage caused by traffic. Through a large selection of heavy duty items designed to suit most applications, U-Guard offers a set of material, each serves to provide the required shield to the facility.

Natural rubber, EPDM, SBR, Vinyl, and Urethane compounds are the materials used in manufacturing the distinguished products of Uguard.

Applications: Car Parks, Warehousing and Distribution Areas, Delivery & Dispatch Areas, Manufacturing Areas, Loading Docks, Parking Garages, Storage Areas, Archways & Columns, Hotel & Motel Parking Lots, Truck & Bus Terminals, etc..



Product Availability:

KSA, UAE, Bahrain, Kuwait, Oman, Lebanon, Egypt & Pakistan

Architectural & Finishing Solutions

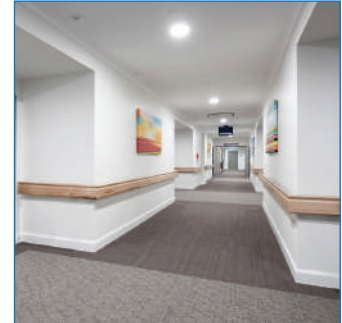


Handrails

Brand: Pawling

Pawling Systems range of Handrails offer a wide variety of styles, colors and materials for all types of facilities, applications and budgets. A near endless list of product options including PVC, Wood and Stainless Steel. Or a combination of these materials to provide you with the finish and design you want.

For the PVC Handrails, we offer 70 standard colors from which to choose or we provide custom color matching. The Wood Handrails are offered in Oak, Maple, Ash and Cherry. Standard stain colors or custom matched stain at no additional charge. There is a truly incredible wealth of design possibilities with Pawling Systems products.



Impact Protection Systems

Brand: Pawling

INTERNAL | Architectural & Industrial Impact Protection System:

- ▶ Handrails: Sculpted, Flat and Cylindrical Profiles
- ▶ Wall Guards: Flat and Sculpted - Accent Rails
- ▶ Chair Rub Rails: Flush and Surface-mounted
- ▶ Corner Guards: Flush and Surface-mounted
- ▶ Vinyl Doors and Frame Guards

Material: Vinyl, Aluminum, Wood, Clear Lexan and Stainless steel



EXTERNAL | Speed Bumps & Bumper Guards

Speed Bumps and Bumper Guards are used extensively in commercial parking garages and building service areas for vehicular, human and parking safety. These profiles are designed to maximize wall surface area protection and high impact absorption.

EXTERNAL | Heavy Duty Wall and Corner Guards

Heavy duty wall and corner guards are provided to withstand heavy impacts in parking, logistics and industrial facilities. Profiles are produced from EPDM Rubber, Natural Rubber, Styrene-Butadiene Rubber, Recycled Plastic, and Neoprene.



Product Availability:

KSA, UAE, Bahrain, Kuwait, Oman, Lebanon, Egypt & Pakistan

Architectural & Finishing Solutions



Metal Ceilings

Brand: BMG

Metal ceilings are usually specified in modern buildings for many valuable reasons. It is considered as high performance ceiling due to the increased life span and durability. The high recyclable content also makes it one of the most valuable ceiling solutions in the new building code.

The metal ceiling can be produced in different shapes, colors and patterns from plain to perforated, square, rectangular, trapezoidal, wave and curve. BMG Metal Ceiling range varies from our standard products up to any custom made designs specified by the architects and designers.

Acoustic Performance

In order to improve interior sound control, perforation pattern with an open area of 16% to 22% is required. These patterns are framed with a solid border of 10mm in order to ensure maximum flatness and product stability.

As a standard feature, perforated tiles are supplied with a sound absorbing non-woven acoustic felt for enhanced acoustical properties, tested in accordance to ASTM C423a. Rockwool insulation pads of 25-50mm thick, 40-110kg/m³ density can be applied.

Finishes

The panels are finished with an electrostatically polyester powder coat (thickness of 60-120 microns) and are available in standard color RAL9010. Other colors (RAL, NCS, made to match) are available as per architect's specifications.

These panels are salt spray tested for 1000 hours corrosion protection, as per ASTM B 117-73, and Anti- Bacterial finish, as per JIS 2801:2000, is also available upon request.

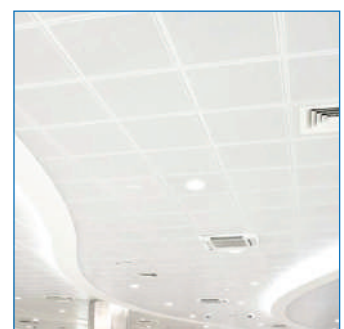
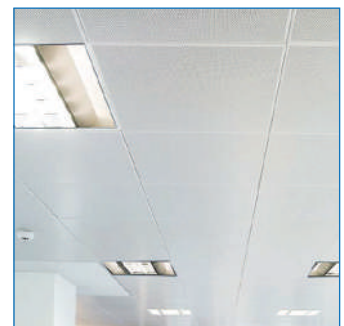
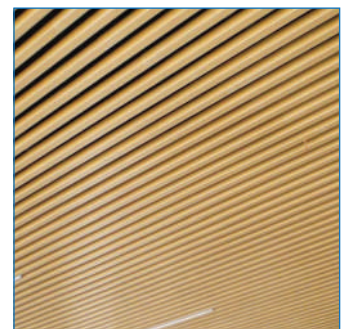
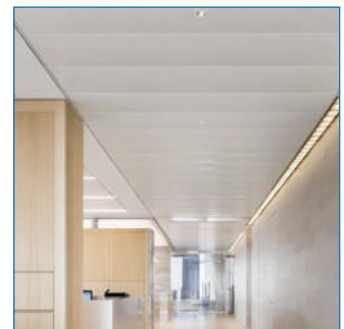
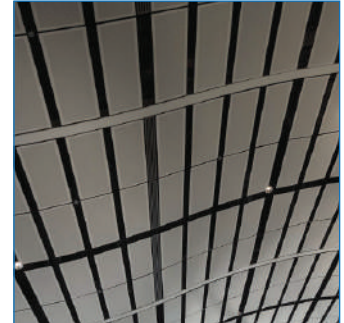
Fire Classification

Surface spread of flame class 1 as per BS 476 : part 7 1997. Non-combustible material tested in accordance to BS 476 : Part 4: 1970. Class 0 material surface of composite products as per building regulations 1991.

Fire propagation tested as per BS 476 : Part 6 1989. Additionally fire rated F90 system was tested for 115 minutes fire resistance in accordance to BS 476 : Part 23:1987, Clause 5.

Product Availability:

KSA, UAE, Bahrain, Kuwait, Oman, Lebanon, Egypt & Pakistan



Architectural & Finishing Solutions

Acoustical & Decorative Ceilings

Brand: Rockfon

Rockfon is a leading provider of acoustic stone wool and metal ceiling solutions and suspension systems. Rockfon complete ceiling systems are a fast and simple way to create beautiful, comfortable spaces. Easy to install and durable, they protect people from noise and the spread of fire, while making a constructive contribution toward a sustainable future. Rockfon develops acoustic ceiling solutions directly addressing important indoor environment considerations and requirements by balancing high technical performance demands with modern design trends.

Rockfon stone wool panels are known for their design, aesthetics and ease of installation coupled with their key performance features of superior fire safety and humidity resistance, optimum light reflection and acoustic control. These qualities ensure that Rockfon products are among the highest-performing, most cost-effective and less labor intensive to install on the market. Rockfon specialty metal ceilings are designed and fabricated to exact specifications and the highest manufacturing standards in local production facilities. They are available in a wide-range of shapes, sizes and finishes, and exist in standard and custom configurations.

Performance Attributes of Rockfon Stone Wool Ceilings

- ▶ Sound Absorption
- ▶ Fire Safety
- ▶ Light Reflectance
- ▶ Humidity Resistance
- ▶ Clean-ability
- ▶ Hygienic
- ▶ Quick & Easy Installation

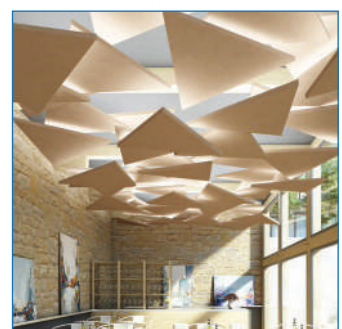
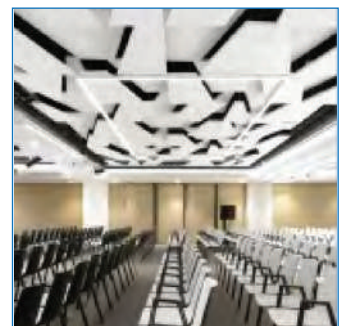
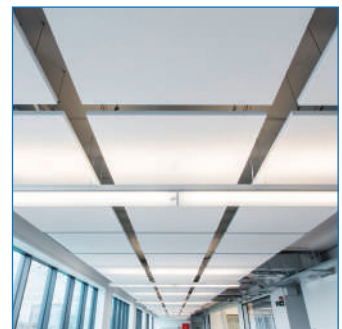
Installation Benefits

High quality results do not always require a lot of hard work. Rockfon ceiling tiles weigh less, are easy to cut with a standard utility knife, have a durable surface and edges and can even be installed before the building has been fully closed and finished. This speeds up the installation process and can contribute to the project remaining on time and on budget.

- ▶ Easy to Carry
- ▶ Easy to Cut
- ▶ No Acclimatization Necessary
- ▶ Integration of Services

Product Availability:

KSA, UAE, Bahrain, Kuwait, Oman, Lebanon, Egypt & Pakistan



Architectural & Finishing Solutions



Steel Doors

Brand: BMG

Doors are a legal requirement for all commercial properties, whether industrial environments, local authority buildings, leisure, hospitality, healthcare, education or retail offices.

We design every door to order, you can decide exactly which features you want it to include. From fire-rated protection and louvers to a soundproof filling, you will receive a specialist door purpose-built for your building.

Fabrication is at the core of everything we do. To make sure we're as good at it as possible, we've invested heavily into the latest manufacturing technology, so we can guarantee every door meets every customer's specifications, every time.

The benefits of error-free design mean that we can install your new door quickly, efficiently, and at your convenience, so you can sit back or concentrate on running your operations while we make your premises safe.

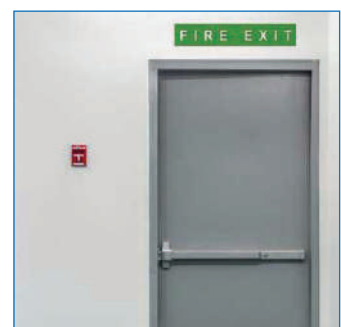
Steel Product Range:

- ▶ Fire rated steel Doors
- ▶ Non Fire rated steel Doors
- ▶ Insulated Doors
- ▶ Lead Lined Doors
- ▶ Acoustic Doors
- ▶ Personnel Doors
- ▶ Louvered Doors
- ▶ Glazed Doors
- ▶ Sliding Doors
- ▶ Glazed Screens
- ▶ Security Detonation Doors
- ▶ Prison Entrance Doors
- ▶ Grill / Cell Doors
- ▶ Blast Resistant Door
- ▶ Bullet Resistant Doors
- ▶ Vault Room Doors
- ▶ Burglar Resistant Doors
- ▶ Entry Gates



Product Availability:

KSA, UAE, Bahrain, Kuwait, Oman, Lebanon, Egypt & Pakistan



Architectural & Finishing Solutions

Gyproc System & Solutions

Brand: Gyproc



Gyproc systems have been purpose-designed by experienced technicians to meet the challenging needs of today's increasingly demanding buildings. Whether it is straight forward partitions or sophisticated shaft wall systems for high speed lift shafts - every aspect is taken into consideration, from performance to speed and ease of installation - and from safe handling to the ready availability of components across Middle East.

Partition & Wall Systems

Gyproc's lightweight partitions and wall system category extensively functions from a simple space division to high performance walls.

Wall Lining Systems

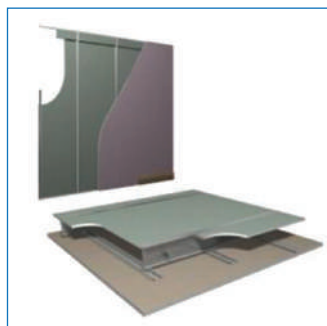
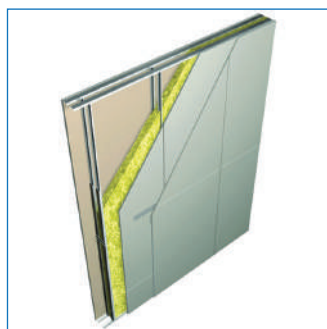
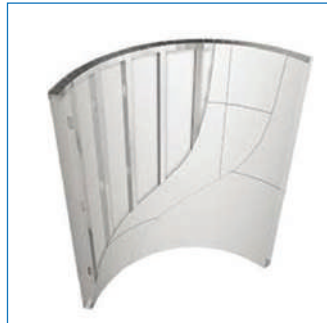
Gyproc's wall and roof lining system deals with all lining applications conforming to the thermal and sound insulation, fire protection, or impact resistance requirement.

Ceiling Systems

Gyproc's ceiling systems offers an extensive range of plasterboard ceilings suitable for all kinds of domain structures.

Finishing Systems

Gyproc's range of finishes provide everything needed to complete the wall lining, partition, floor and ceiling systems, regardless of the size and complexity of the project specification.



Mada Plus Systems

Brand: Mada



Drywall partitions are more than just a physical barrier. They are supposed to perform an array of functions ranging from fire, acoustics, impact, mold resistance and structural surety. Mada Plus Drywall systems are purposely designed to satisfy aforementioned range of projects requirements to ensure a safe and comfortable environment for the client. Each component of Mada Plus Drywall systems are thoroughly tested and system performance substantiated by internationally accredited 3rd party testing and certification agencies. The advantage of acquiring all components of a complete system from a single source (Closed system) guarantees the effectiveness of the system and ensures the performance as per the project specification.

System Selector

Mada e-selector is fast and easy tool that will assist you in selecting the most appropriate Mada Plus Drywall System for your application.

Product Availability:

KSA, UAE, Bahrain, Kuwait, Oman, Lebanon, Egypt & Pakistan

Architectural & Finishing Solutions

Gypsum Boards & Accessories

Brand: Gyproc / Mada / UMI / Gboard / UBoard

Plasterboard has become the most common dry lining material for walls and ceilings in modern building construction.

Manufactured on a continuous production line, plasterboard is comprised of a specially formulated gypsum core, encased between paper liners. Plasterboard products utilise naturally occurring gypsum and paper.

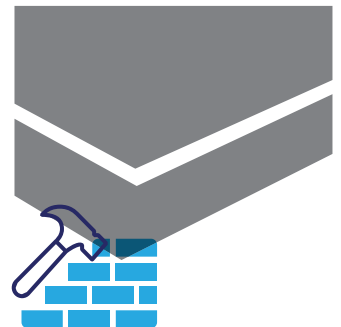
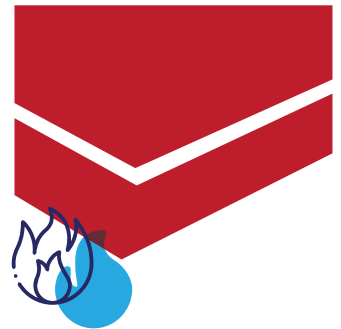
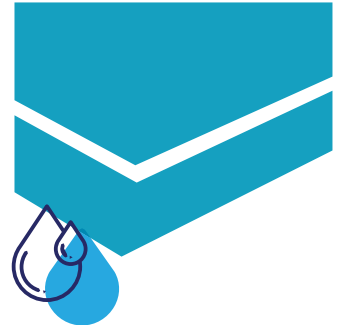
We supply extensive range of plasterboards, plasters, ceiling tiles and boards which are fully supported by high grade metal system components and accessories from SFSP.

Range of Plasterboards:

- ▶ Regular Boards
- ▶ Cement Boards (External)
- ▶ Fire Resistant Plasterboard
- ▶ Moisture Resistant Plasterboard
- ▶ Fire and Moisture Resistant Plasterboard
- ▶ Impact Resistant Board
- ▶ Acoustic Boards
- ▶ Ceiling Boards
- ▶ FireStop Boards
- ▶ Shaft Wall Board
- and more...

Range of Plasterboard Accessories:

- ▶ Joint Compound
- ▶ Plaster Board Adhesive
- ▶ Drywall Metal Tape for corner
- ▶ Drywall Glass Mat Tape
- ▶ Drywall Paper Tape
- ▶ Drywall Fiber Tape
- ▶ Drywall Screws



Product Availability:

KSA, UAE, Bahrain, Kuwait, Oman, Lebanon, Egypt & Pakistan

Architectural & Finishing Solutions

Cement Boards and Accessories

Brand: U Board

U-Boards products are manufactured according to international standards. Following is the U-Boards-Products Range:

Fiber Cement Boards

Fiber cement boards are manufactured from cellulose fiber, portland cement, quartz sand, additives and water; It is non asbestos, formaldehyde, benzene and other harmful substances and with excellent physical and chemical characteristics.

These boards are non combustible, fire and water resistant, green and environmental friendly, highly efficient and energy-saving.

Magnesium Oxide Boards

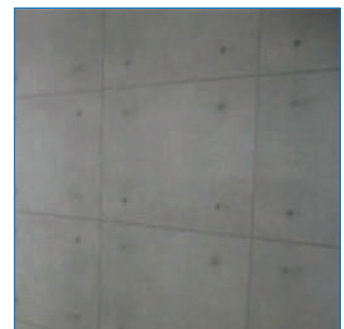
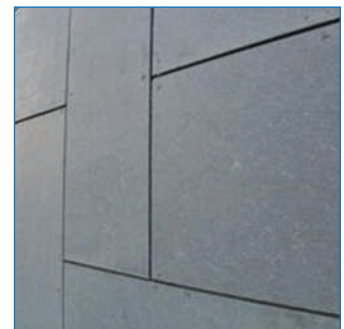
These boards are used in place of traditional gypsum drywall as wall and ceiling covering material and sheathing. It is also used in a number of other construction applications such as: Fascias, Soffit, Shaft-Liner & Area Separation, Wall Sheathing and as tile backing (backer board) or as substrates for coatings and insulated systems such as Finish Systems.

It is suitable for a wide range of general building uses and for applications that require fire resistance, mold and mildew control, as well as sound control applications and many other benefits. Magnesium oxide board are available in various sizes and thickness. It is not a paper faced material.

Calcium Silicate Boards

Calcium silicate board reinforced with selected cellulose fibers and fillers. It is 100% free from asbestos, sepiolite, inorganic fibers or formaldehyde. The board is versatile and suitable for use in a wide range of internal and semi exposed external applications in building construction projects.

Calcium silicate passive fire protection board being clad around steel structure in order to achieve a fire-resistance rating. It is an economical building board material with fireproofing perty to replace concrete or block wall for the construction of non load bearing elements.



Product Availability:

KSA, UAE, Bahrain, Kuwait, Oman, Lebanon, Egypt & Pakistan

Architectural & Finishing Solutions



Insulation Systems

Brand: Saudi Rockwool

Buildings are subjected to different climatic conditions like hot in summer and cold in winter as well rain which have adverse effect on the building structure and their strength as well causes discomfort to the occupant by heat gain in hot climatic conditions and Heat loss in Cold climate. External walls and Roof of the Building contribute to the heat gain and loss to external ambient and it easily disturbs the psychometrics inside of the Building.

In building insulation we have different dimensions to be covered majorly referred as Thermal Insulation, Acoustic Insulation and Fire Insulation. To serve the purpose market is flooded with various types of Insulation materials and the material is chosen to perform one or several functions at once. Rockwool Insulation is most suitable to perform multiple functions like Thermal Efficiency, Acoustic Comfort and Fire Safety.

Why use Rock Wool?

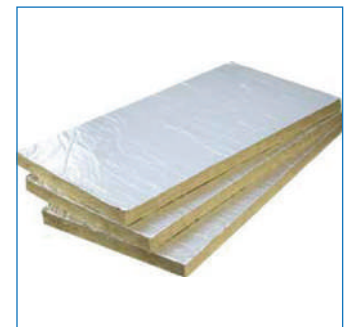
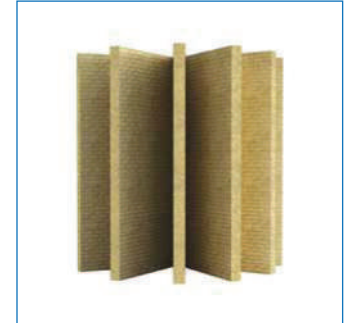
Rock Wool is a high performing material in the thermal insulation, acoustic insulation and fire resistance applications. Thermal insulation and energy saving (power/energy conservation) is one of our modern civilization concerns, for its positive role in conserving the environment and the national economy. Scientific research and studies proved that use of thermal insulation in buildings will dramatically reduce the heat transferred through the walls and roofs.

The open cell structure of Rock Wool makes it an ideal product as a sound absorber or acoustic insulator, with high absorbing/insulating coefficients over a wide sound frequency range, the acoustical insulation can be achieved by installing Saudi Rock Wool in wall partitions, thus providing significant improvement in their Sound Transmission Class (STC).

Due to its open cell structure, Saudi Rock Wool has superior sound absorption properties. (NRC>0.95), Using Rock Wool against sound waves decreases the sound reverberation time rooms/spaces, thus providing comfort and sound intelligibility to the occupants.

The most important characteristic of Rock Wool is its exceptional resistance against fire; Rock Wool is non-combustible and does not ignite. It is therefore internationally specified as a fire rated material.

Rock Wool restricts the fire to spread from a zone to another; it also acts as a protection for load bearing elements in steel structures and thus prevents the building from collapsing under fire conditions.



Product Availability:

KSA, UAE, Bahrain, Kuwait, Oman, Lebanon, Egypt & Pakistan

Architectural & Finishing Solutions

Insulation Systems

Brand: KIMMCO / SIIMCO -ISOVER

KIMMCO-ISOVER products offer solutions to enable the construction sector to meet the increasing demand for ecofriendly and energy efficient building materials. Stone Wool (Rock Wool) insulation products play a key role in the successful development of green and fire safe building solutions, as well as efficiently insulated industrial equipment.

KIMMCO-ISOVER products are made of high quality Stone Wool insulation materials in different shapes (slab, Wired Mat, roll, pipe section & loose wool) for all types of buildings (residential & non-residential) and industrial facilities.

The factory is located in Yanbu, in the western region of Saudi Arabia. In addition to Stone Wool insulation, KIMMCO-ISOVER manufactures and supplies Glass Wool insulation from its factory located in Kuwait.

What is Stone Wool?

KIMMCO-ISOVER Stone Wool products is made from volcanic rock – a natural material present in large quantities throughout the Earth. It combines mechanical resistance with good thermal performance, fire safety and high temperature suitability.

Why Insulation in Buildings?

KIMMCO-ISOVER products are application based solutions to satisfy a wide range of demanding requirements, covering various building and industry applications, to providing safety, efficiency, and thermal and acoustical comfort.

Savings & Thermal Comfort

With proper insulation, our buildings need smaller and less expensive heating and cooling devices to keep us comfortable.

Optimized Acoustic Comfort

Insulation also contributes to limiting sound pollution. In our modern world, noise has become one of the major sources of discomfort.

Excellent Fire Protection

It is crucial to have construction products that, in case of fire, don't contribute to the spread of fire and don't produce a harmful amount of smoke.

Sustainability

Buildings have a massive impact on the environment, both in their construction and throughout their life.

Product Availability:

KSA, UAE, Bahrain, Kuwait, Oman, Lebanon, Egypt & Pakistan

KIMMCO ISOVER
SAINT-GOBAIN



Civil Solutions



- 44 ➤ Expanded Metals, Plaster Beads
- 44 ➤ Block Ladder Reinforcements
- 44 ➤ Steel Lintels & Block Work Accessories
- 45 ➤ Concrete Reinforcement
- 46 ➤ Geotextiles
- 47 ➤ Concrete Accessories
- 47 ➤ PVC WaterStop
- 48 ➤ Extruded Polystyrene Thermal Insulation Boards
- 49 ➤ Expanded Polystyrene (EPS) Thermal Insulation Boards
- 50 ➤ Polypropylene Protection Boards
- 51 ➤ Bitumen Impregnated Fillers and Protection Boards
- 52 ➤ Lead Sheet
- 53 ➤ Polyethylene Roll / Film

Civil Solutions

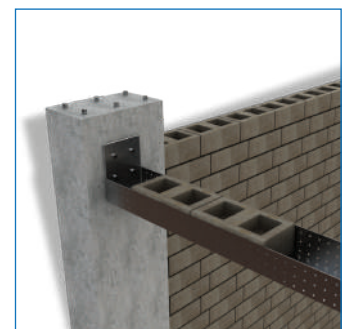
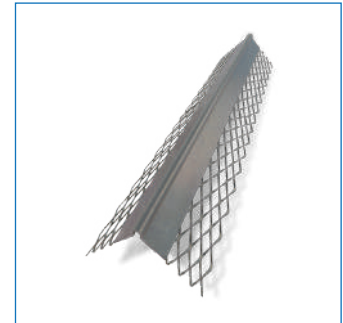


Expanded Metals, Plaster Beads

Brand: SFSP

Expanded Metals help the formation of joints, protection of corners and resistance against cracks, chips and impact damage. SFSP manufactures in accordance with BS EN 13658 - 2, ASTM C847-18, BS EN 845-3:2003+A1:2008, ASTM A 951/A 951M - 2016 standards. Following is the list of all Expanded Metals manufactured in SFSP:

- ▶ Angle / Micro Angle Bead
- ▶ Plaster / Micro Plaster Stop Bead
- ▶ Control Joint Bead
- ▶ Architrave Bead (With & Without Flange)
- ▶ Movement Bead
- ▶ Aluminum Channel
- ▶ Corner/ Strip Mesh
- ▶ Metal Sheet / Coil / Metal Rib / Hy-Rib Lath



Block Ladder Reinforcements

Brand: SFSP

SFSP ladder and truss types are used for the reinforcement of brick and block masonry to give improved tensile strength to walls subjected to lateral loading e.g. wind and seismic. SFSP Block reinforcements reduces the risk of cracking either at stress concentration around opening.



Steel Lintels & Block Work Accessories

Brand: SFSP

Steel Lintels provide a combination of strength and light weight, resulting in efficient load bearing performance and increased productivity on site. They are characterized by their ease of installation in addition to time as well as money saving. SFSP manufactures Steel Lintel in accordance with BS EN 845-2:2013+A1:2016 and according to relevant standards BS 5977 Part 2:1983.

SFSP manufactures Block Work Accessories in accordance with BS EN 845-1:2013+A1:2016 and according to relevant standards BS 1243:1978. Following is the list of all Block Work Accessories manufactured in SFSP:

- ▶ Debonding Cavity Block Tie
- ▶ Dove Tails
- ▶ Wall Ties (Adjustable, Cavity, Double Triangle)
- ▶ Debonding Control Joints Flat Tie
- ▶ Hammer-On Section
- ▶ Butterfly Wall Tie
- ▶ And More....



Product Availability:

KSA, UAE, Bahrain, Kuwait, Oman, Lebanon, Egypt & Pakistan

Civil Solutions

Concrete Reinforcement

Brand: Mateenbar

IKK Mateenbar manufactures a structurally durable & high performance product called Mateenbar™, a new standard of reinforcement, which is Glass Fiber Reinforced Polymer (GFRP) rebar, also known as Fiberglass rebar. It's the first Aramco approved GFRP Rebar Facility.

Our products remove the risk of concrete corrosion in highly aggressive environments. They provide large cost savings by eliminating maintenance costs and increasing the design life of concrete structures to 100+ years.

 mateenbar™



Product Availability:

KSA, UAE, Bahrain, Kuwait, Oman, Lebanon, Egypt & Pakistan

Civil Solutions

Geosynthetics

Brand: Terram

Terram are creators, innovators and industry pioneers in geosynthetic solutions worldwide.

Terrams Target Industries

(Please click the respective sector to access current information)

- ▶ Civil Engineering & Building
- ▶ Railways
- ▶ Landscaping
- ▶ Landfill
- ▶ Coastal & Waterways
- ▶ Pipelines & Utilities]

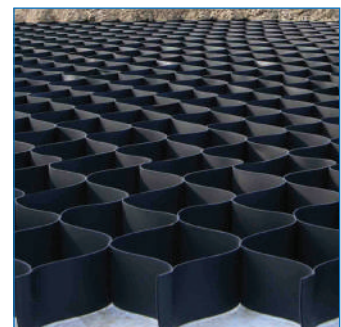
Terrams Product Range

(Please click the product name to access current information)

- ▶ Standard Geotextiles
- ▶ Interlocking Porous Plastic Paving System (Bodpave™ 85)
- ▶ Interlocking Porous Plastic Paving System (Bodpave™ 40)
- ▶ Fine Soil Geocomposite (Hydrotex™)
- ▶ Trackbed Separators
- ▶ Drainage Trackbed Separators
- ▶ Reinforced Trackbed Separator
- ▶ Permeable Paving Grids (Truckpave™)
- ▶ Specialist Geotextile (Inbitex)
- ▶ Heavy Duty Grass Reinforcement Mesh (GrassProtecta™)
- ▶ Heavy Duty Pipeline Protection Mesh (Protectamesh™)
- ▶ Drainage Geocomposites
- ▶ Geocells
- ▶ Hi-Vis Geotextile
- ▶ Weed-Control Fabric (WeedGuard™)
- ▶ Permeable Geotextile (RootGuard™)
- ▶ Impermeable Geotextile Coated with HDPE (RootGuard™ Plus)
- ▶ Minipak (50m2 of TERRAM Standard Geotextile)
- ▶ Heavy Duty Needle-Punched Geotextiles (Robust Geotextiles)
- ▶ Frost Blanket
- ▶ Salt Barrier
- ▶ Temporary Reusable Grass Covering (GrassCarpet™)
- ▶ Turf Reinforcement Mesh for Grass (TurfProtecta™)
- ▶ Barrier Mesh
- ▶ Protection and Warning Trench Mesh (Maxigrid)
- ▶ Underground Warning Mesh
- ▶ Safety Rubber Mat

Product Availability:

KSA, UAE, Bahrain, Kuwait, Oman, Lebanon, Egypt & Pakistan



Civil Solutions

Concrete Accessories

Brand: Unicrete

We supply full line of cost effective Concrete Accessories of the highest quality for concrete manufacturers and contractors. Our Offerings are divided into FormWork Accessories and PVC Products.

FormWork Accessories:

- ▶ Tie Rods
- ▶ Galvanized Waler Plates
- ▶ Galvanized Wing Nuts / SW 27
- ▶ Galvanized Waler Nuts / SW 27
- ▶ Galvanized Counter Plates / Plain
- ▶ Hexagon Nuts / SW 30
- ▶ Water Stoppers Or Barriers / SW 36
- ▶ PVC Tubes - Thruty Sleeves
- ▶ PVC Tubes - Thruty Cones

PVC Products:

- ▶ PVC Chamfer Strips
- ▶ PVC Chair Spacer
- ▶ PVC Wheel Spacer
- ▶ Shim Pad

PVC WaterStop

Brand: Unicrete

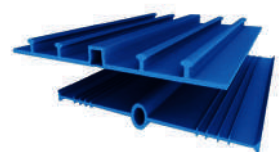
WaterStop is designed for use in any concrete structure which contains joints and is subjected to a hydrostatic load on one face of the structure. It prevents water movement through concrete joints in water reservoirs, canals, dams, sewage treatment plants, bridges, stadiums, basements, floor slabs, parking garages, and similar structures.

Areas of Application:

- ▶ Structural Engineering
- ▶ Water Excluding
- ▶ Water Retaining

Product Availability:

KSA, UAE, Bahrain, Kuwait, Oman, Lebanon, Egypt & Pakistan



Civil Solutions

Extruded Polystyrene Thermal Insulation Boards

Brand: Esscofoam

Insulation system reduces the heat transfer through the envelope of a building. Extruded polystyrene boards have closed cells with common sides and is produced with fully automated extrusion process in accordance with international specifications and standards. Extruded polystyrene has a high resistance to water absorption.

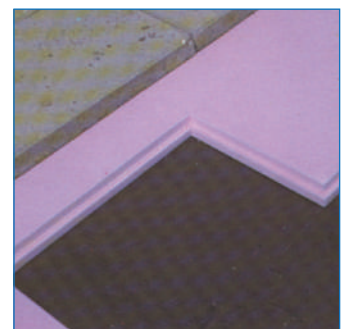
The manufacturing process, combined with intrinsic qualities of the static component thermoplastic material gives it predictable performance and high insulating value. Ideal for Roof Insulation, Interior Wall Insulation, Exterior Insulation and Floor Insulation.

Advantages

Thermal Insulation Boards have several advantages, amongst are:

- ▶ Closed and uniform cell structure
- ▶ Extremely low moisture absorption
- ▶ Very good mechanical strength
- ▶ Long-term high insulation, performance efficiency
- ▶ Good dimensional stability
- ▶ High resistance to temperature cycling
- ▶ High resistance to aging
- ▶ Very high resistance to water absorption
- ▶ Does not require a vapor barrier
- ▶ Not affected by cavity masonry wall construction
- ▶ High long-term insulation value
- ▶ Protects the inner walls from condensation
- ▶ Strong rigid board, not easily damaged
- ▶ Easy to handle, cut and install
- ▶ Available in a wide range of thicknesses
- ▶ It does not rot or settle
- ▶ It is extremely cost-effective in cavity wall applications

ESSCOFOAM



Product Availability:

KSA, UAE, Bahrain, Kuwait, Oman, Lebanon, Egypt & Pakistan

Civil Solutions

Expanded Polystyrene (EPS) Thermal Insulation Boards

Brand: Local Brands

EEL Expanded Polystyrene is rigid and light - weighted. By controlling the density of expanding beads during the manufacturing process, EEL can custom produce insulation materials according to the specific requirements of customers applications.

EEL production of Expanded Polystyrene boards and injection molded boards are in conformity with the British Standard specification BS 3837 : 1977 for expanded Polystyrene boards, DIN and ASTM (American Society for Testing and Materials).

Type N (Normal)

It consists of 100% of closed cell polystyrene expandable beads.

Type A (Fire Retardant)

It is similar to Type N, but meets additional requirements for the extent of burn when tested with the method given by virtue of BS 4735. This requirement is met by the incorporation of flame retardant additives and other appropriate modifications.

EPS Characteristics

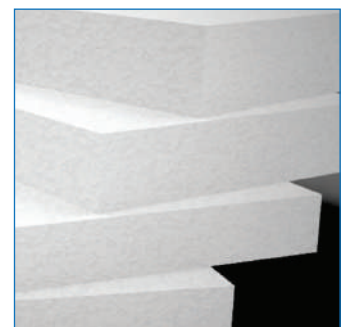
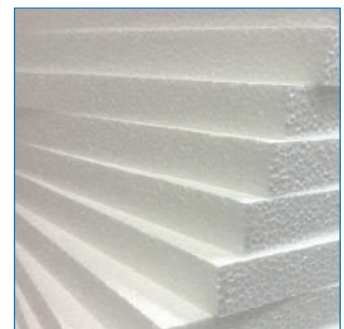
- ▶ Heat resistant
- ▶ Low thermal conductivity
- ▶ High permanent R - value
- ▶ High compressive strength
- ▶ Excellent shock absorption
- ▶ Excellent dimensional stability
- ▶ Low water absorption
- ▶ Reflective white color
- ▶ Will not rot, mildew or support bacterial growth
- ▶ Resistant to most acids and alkalis

EPS Advantages

- ▶ Energy saving
- ▶ Low material / installation costs
- ▶ Broad range of densities and sizes
- ▶ Easy to handle and apply
- ▶ Simple to cut and shape
- ▶ Tolerates broad range of temperatures
- ▶ Doesn't irritate skin
- ▶ Restricts moisture penetration
- ▶ Does not deplete the Earth ozone layer

Product Availability:

KSA, UAE, Bahrain, Kuwait, Oman, Lebanon, Egypt & Pakistan



Civil Solutions

Polypropylene Protection Boards

Brand: Polyboard

PolyBoard is a semi-flexible polypropylene based board for waterproofing membrane protection.

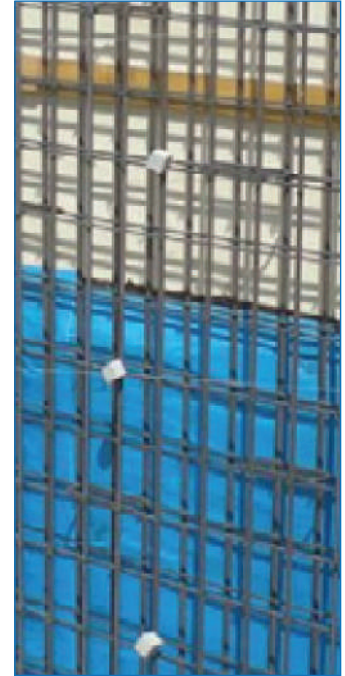
POLYBOARD is extremely strong in puncture and injury resistance. It is engineered to resist puncture at over 1100, 1300, 1500, 2000, 24000 and 2600 Newton as per ASTM E-154. It differs from any other materials used to protect the waterproofing membrane as it enjoys flexibility which enables its use for tacking corners, protrusions, rounded surfaces and also uneven surfaces.

It is not affected by mineral oils, solvents, acids, bases, and salts. These elements are usually found in contaminated water tables and soil compositions. This product does not absorb water, which adds to the impermeability of the waterproofing membrane.

Applications:

PolyBoard is applied on hot asphalt liquid membranes, torched applied asphalt membranes and on rubber based waterproofing membranes.

1. Hot applied liquid membrane: PolyBoard is simply laid down on top of hot asphalt before it cools down.
2. Torched applied asphalt membrane: before application of PolyBoard, the exposed side of the membrane shall be lightly torched in separate spots. When the top exposed layer of the membrane changes into a sticky shiny layer, PolyBoard protection boards are applied with gentle pressure.
3. Rubber waterproofing membrane: a solvent based glue (Patex or similar) is applied as an adhering agent between the waterproofing membrane and the protection board.
4. PolyBoard is also used as a protection boards for tiles of various finishes during construction phases.



Product Availability:

KSA, UAE, Bahrain, Kuwait, Oman, Lebanon, Egypt & Pakistan

Civil Solutions

Bitumen Impregnated Fillers and Protection Boards

Brand: BITUBOARD / Local Brands

Filler Boards are manufactured from highly resilient softwood fibers coated with bitumen. Filler Boards are dry and clean, and cannot extrude any form of staining matter. They are resistant to moisture penetration and ice formation in the joint. They are immune to dry and wet rot, fungus and most forms of insect attack or similar forms of deterioration.

They completely fills joints under repeated cycles of expansion and contraction with minimum extrusion. They are also a good insulating vapor barrier which is easily handled without breakage.

Basic Use

Filler Boards are designed as a standard, Low cost, pre-moulded joint filler for expansion joints in civil engineering and building construction works of all types. The main uses for Bituboard in the construction industry are: roads, bridges, runways, pedestrian areas, basements, retaining walls and site slabs.

Protection Work

Filler Boards are recommended for the protection of different materials, particularly waterproofing below-grade where abrasive and sharp backfill material could puncture or otherwise damage the waterproofing.



Product Availability:

KSA, UAE, Bahrain, Kuwait, Oman, Lebanon, Egypt & Pakistan

Civil Solutions



Lead Sheet

Brand: UBI / AMRay

Lead is generally the most cost-effective radiation shielding material that protects against the effects of gamma rays and x-rays. The properties of lead shielding which makes it an excellent shielding material is its density, high atomic number, high level of stability, ease of fabrication, high degree of flexibility in application and its availability.

Characteristics

Our Lead Sheets are extremely resistant to corrosion from the atmosphere, salt water and most industrial chemicals. Lead Sheets are built into a variety of structures such as walls, doors, window frames and cabinetry to provide the necessary shielding protection. Lead Sheets can be readily manipulated with standard hand tools without the risk of fracture.

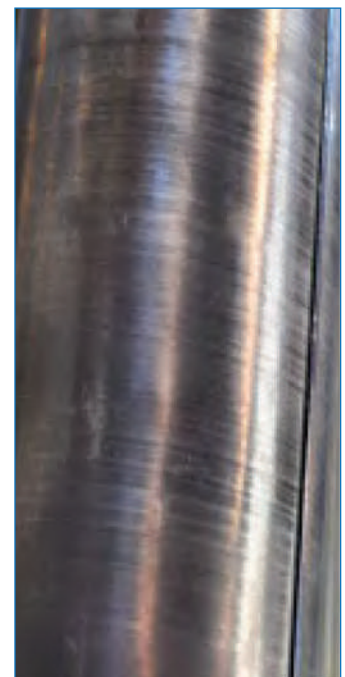
Specification

Standard Size	: 1 x 2 m *
Sheet Thickness	: mm, 2.5mm ²
Weight	: kg/Sqm, 28.35 Kg/Sqm 22.68
Standards	: ASTM B29-, BSEN 12588:2006
Fire Resistance	: Melts at 327.4 °C

Usage

Lead Sheets are offered for many applications that include:

- ▶ Radiation Shielding
- ▶ Hospitals
- ▶ Dental Offices and Veterinary Clinics
- ▶ Construction
- ▶ Roofing, Flashing and Waterproofing
- ▶ Corrosion Protection
- ▶ Acid Storage and Handling
- ▶ Autoclaves
- ▶ Precipitators
- ▶ Movable Lead Screens
- ▶ Sound Barriers and Soundproofing
- ▶ Nuclear Energy Shielding
- ▶ Tank Lining
- ▶ Vibration Absorbers



Product Availability:

KSA, UAE, Bahrain, Kuwait, Oman, Lebanon, Egypt & Pakistan

Civil Solutions

Polyethylene Roll / Film

Brand: Poliane

Poliane is a polyethylene vapor barrier to alkalis, salts, acids and chemicals found in sub-soils. Fully stable and waterproof.

Basic Use

Used as a vapor barrier and damp proof membrane in concrete slabs, floors, insulation boards shuttering , etc... For corrosion protection of water and oil pipelines. Protects from the sun, wind, rain, dust and damage.

Dimensions

Supplied in rolls of different lengths, widths and thicknesses.

- ▶ Film Thickness: From 100 gauges (25 Mic.) to 1200 gauges (300 Mic.)
- ▶ Film Length: up to 25 meters
- ▶ Film Width: up to 4 meters

Composition and Materials

Poliane is an anti-corrosive and weather resistant polyethylene vapor barrier.

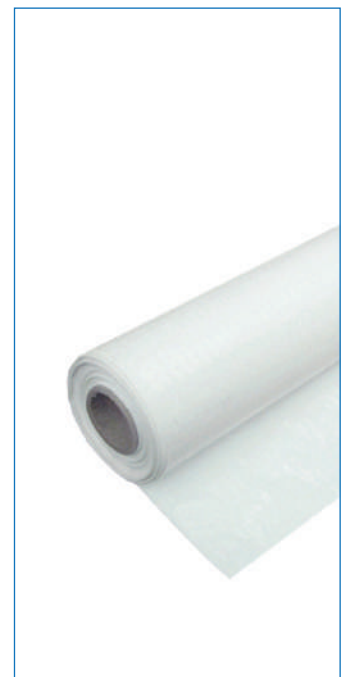
Application

Sleeves for corrosion protection of water and oil pipelines. Agricultural film for greenhouses, plastic tunnels & other agro-techniques. Construction film used as a vapor barrier and damp proof membrane in concrete slabs, floors, over insulation boards, shuttering etc.

Durability

It retains its physical properties and remains chemically resistant to aggressive soil organism, plant and other soil fauna as well as domestic sewage and retains its flexibility in temperatures over 80 deg. C.

POLIANE



Product Availability:

KSA, UAE, Bahrain, Kuwait, Oman, Lebanon, Egypt & Pakistan



Construction Chemicals

- 55 ➤ **STI Firestop Systems (STI)**
- 56 ➤ **Adhesives (BISON)**
- 57 ➤ **Adhesives, Sealants & Construction Chemicals (Mapei)**
- 58 ➤ **Construction Specialty Chemicals (Tremco)**
- 59 ➤ **Waterproofing Membranes & Sealants (POLY TI)**
- 62 ➤ **Construction Sealants & Molding Systems (Eagle Seal)**
- 64 ➤ **Construction Foams (Al Muqarram Group)**

Construction Chemicals

Firestop Systems

Brand: STI

STI leads the industry in developing innovative fire protection systems that help stop the spread of fire, smoke and hot gases. For over 25 years, their team has worked hand in hand with the construction industry to create simple solutions to complex firestopping problems.

The SpecSeal® and EZ Path® product lines are engineered to deliver powerful performance. Because their system designs are user-driven, they are easier to apply. The result is simply designed, outstanding fire protection systems which often result in lower installed costs. STI products and systems offer innovative firestop solutions for all types of new construction and retrofit applications. Since firestopping is their only business, we concentrate all our resources on providing the highest quality, fully tested, innovative firestopping solutions.

STI Product Range

At STI, products are but one component of their value package. As a fully focused manufacturer they are committed to providing complete solutions to your Firestop needs and challenges.

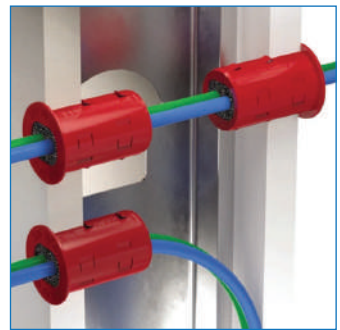
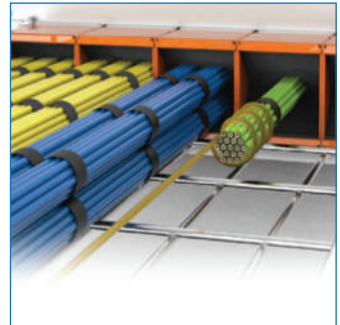
STI has invested the time to understand the unique needs of specific construction segments and applicators and then develop products, systems, and programs tailored to meet these needs.

STI Product Range include the following products:

- ▶ LCI Intumescent Firestop Sealant
- ▶ LC Endothermic Firestop Sealant
- ▶ SIL Silicone Firestop Sealant
- ▶ SSP Putty & Putty Pads
- ▶ SSW Intumescent Wrap Strips
- ▶ LCC Intumescent Firestop Collars
- ▶ EZ Path® Series 44+ Fire-Rated Pathway
- ▶ EZ Path® Cable Tray Retrofit Device
- ▶ EZ-Firestop Grommet
- ▶ CS Cable Spray
- ▶ SSB Intumescent Firestop Pillows
- ▶ CS Composite Sheet
- ▶ SSM Firestop Mortar

Product Availability:
KSA & UAE

 Specified
STI Technologies Inc.



Construction Chemicals



Adhesives

Brand: Bison

Bison is in part the basis for every job because of the unparalleled product range. For [critical] do-it-yourselfers. Securing, repairing, assembling and sealing. Indoors, outdoors, in the garden, the caravan and on the boat.

Well-known products are Poly Max®, Montagekit, Bison Kit® and Nexus® Glue.

Quality and Innovation

Bison means quality and innovation. Bison works with a quality assurance system in order to guarantee constant quality.

This involves the entire process, from incoming raw materials and production, right through to the end product and delivery, and all carried out according to the given procedures. The system is ISO 9001 certified. This means that users can be sure of guaranteed quality at all times.

Bison Adhesive Range

- ▶ Construction Adhesives
- ▶ Polymer Adhesives
- ▶ Contact Adhesives
- ▶ Epoxy Adhesives
- ▶ Wood Glues
- ▶ Polyurethane Wood Adhesives
- ▶ Super Glues
- ▶ LED Light Booster
- ▶ Specialties
- ▶ Rigid PVC Adhesives
- ▶ Household- and hobby Glues
- ▶ Wallpaper Pastes
- ▶ Flooring Adhesives



Product Availability:
KSA & UAE

Construction Chemicals

Adhesives, Sealants & Construction Chemicals

Brand : Mapei

For more than 80 years, the Mapei team has been providing solutions of excellence for the building market. All around the world, we take part in both the construction and the restoration and preservation of buildings of historical and artistic value.

Mapei Adhesive Range

An incomparable range offered for every site around the world.

- ▶ Products for ceramics and stone material
- ▶ Products for building
- ▶ Products for structural strengthening
- ▶ Products for waterproofing
- ▶ Products for Resilient, Textile Materials and Sports Flooring
- ▶ Products for wooden flooring
- ▶ Products for masonry restoration
- ▶ Products for underground constructions UTT
- ▶ Cementitious and Resin Floor Coverings
- ▶ Admixtures for concrete
- ▶ Wall protective and decorative coatings
- ▶ Cement additives C-ADD



Product Availability:
KSA, UAE & Lebanon

Construction Chemicals

Construction Specialty Chemicals

Brand: Tremco

For generations, Tremco has successfully provided products and services to architects, distributors, building owners and contractors worldwide. Today, they are uniquely positioned to provide single-source, high-performance products, services and solutions.

Tremco Product Range

TREMproof® 250GC | Fluid Applied Waterproofing Membranes

TREMproof® 250GC is a rapid-curing, high-solids, VOC compliant modified polyurethane waterproofing membrane. It can be applied to damp and green concrete.

Dymeric 240 | Two Parts Polyurethane Sealants Self Leveling

This is a multi-component high performance epoxidised polyurethane sealant which provides a durable, weather tight seal in dynamically moving joints. THC-900 & THC-901 are multi-component, high performance joint sealants which on thorough mixing, provide trafficable, durable seals in dynamically moving joints.

TREMproof® 60 | Bitumen Modified Moisture Curing PU Membranes

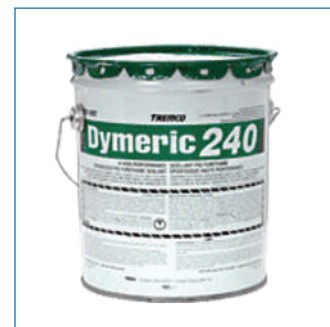
It is a single component, bitumen modified, moisture curing polyurethane fluid applied waterproofing membrane. It is used in the waterproofing of Roofs, Tunnels, Terraces, Balconies, Plaza Decks, Planter Boxes, Retaining Walls, Fountains and Pools.

Dymonic® 100 | High-Perf. / Movement, Single-Component, PU Sealant

Dymonic 100 is a durable, flexible sealant that offers excellent performance in moving joints and exhibits tenacious adhesion once fully cured. Typical applications for Dymonic 100 include expansion and control joints, precast concrete panel joints, perimeter caulking (windows, doors, and panels), aluminum, masonry and vinyl siding.

Product Availability:

KSA, UAE, Bahrain, Kuwait, Oman, Lebanon, Egypt & Pakistan



Construction Chemicals

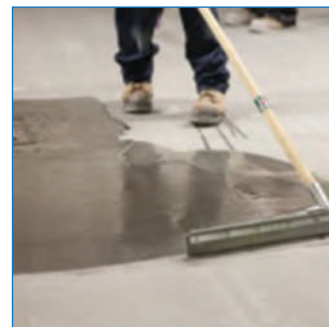


Waterproofing Membranes & Sealants

Brand: Poly TI

Liquid Applied Polyurethane Waterproofing Membrane

Premium, liquid-applied, highly permanent elastic, cold applied and cold curing, one component polyurethane membrane used for long-lasting waterproofing.



Top Coats For Waterproofing Membranes

It is a pigmented, color- and UV-stable, highly permanent elastic, cold applied & cold curing, one component aliphatic polyurethane coating, used as a top-coat for protection over exposed, polyurethane waterproofing coatings. We offer two variations



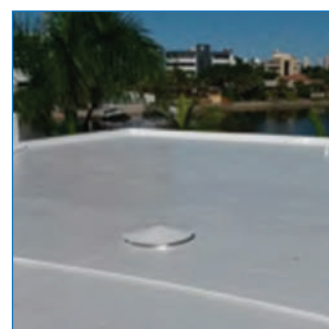
Primers For Liquid-applied Waterproofing Membranes

It is a transparent, rigid, deep penetrating, one component, quick drying polyurethane primer. It comes in two variations:



Water Based, Polyurethane Waterproofing Membrane

POLY TI Aqua is a Liquid-applied, highly permanent elastic, cold applied and cold curing, water based, one component, modified polyurethane membrane used for long-lasting waterproofing.



Polyurethane Floor Primer

POLY TI 7000 is a transparent, semi-rigid, deep penetrating, one component polyurethane primer. Solvent based. Cures by reaction with ground and air moisture.

Polyurethane Floor Coating

POLY TI 7100 is a colored, one component, highly durable, heavy duty aromatic polyurethane floor coating.



Product Availability:

KSA, UAE, Bahrain, Kuwait, Oman, Lebanon, Egypt & Pakistan

Construction Chemicals

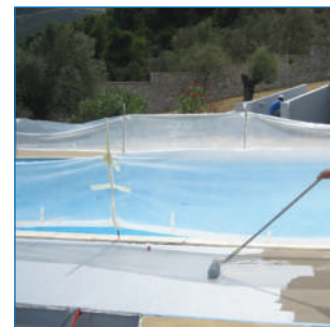


Waterproofing Membranes & Sealants

Brand: Poly TI

Aliphatic Polyurethane Floor Coating UV-Stable

POLY TI 7200 is a colored, one component, highly durable, aliphatic polyurethane thin-layer floor coating. This coating is specially designed for use as a floor coating in external surfaces, providing high mechanical strength, high abrasion and chemical resistance.



One Part Polyurethane Sealants

Poly TI is a high performance one-part polyurethane sealant elastomeric weather-resistant, non-sagging, and water tight with excellent adhesion properties designed for use in all types of joints, vertically and horizontally.



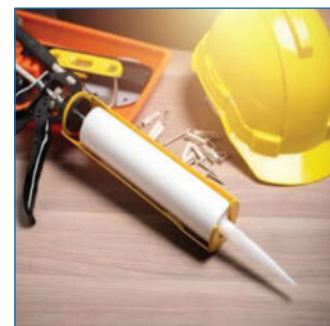
Joint Sealants Mastics

POLY JOINT 30 is a thixotropic, permanent elastic, cold applied and cold curing, one component, low modulus polyurethane elastomer (mastic) used for chalking and joint-sealing. Cures by reaction with ground and air moisture.



Poly TI Low Modulus PU Sealant

POLY TI PU is a moisture-curing, 1-component, polyurethanebased, non-sag elastomeric sealant. It is highly resilient and has excellent recovery characteristics. It can function under wide range of temperatures.



One Component Aliphatic Polyurethane Sealant

Single component moisture curing extended polyurethane liquid applied elastomeric membrane for waterproofing and protection of a wide range of surfaces. Available in two variants



Product Availability:

KSA, UAE, Bahrain, Kuwait, Oman, Lebanon, Egypt & Pakistan

Construction Chemicals



Waterproofing Membranes & Sealants

Brand: Poly TI

Poly TI Elastomers

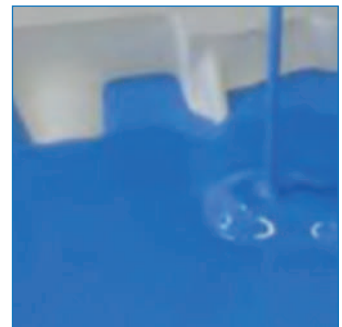
Solvent free, high modulus, polyurethane elastomer, providing excellent elasticity and high tear resistance properties with minimum shrinkage.

Specialized elastomeric resin for the production of molds for use in producing Concrete and Gypsum objects.

It is also used in the production of medium-elastic pressing molds for use in the stamped concrete procedure (edge stamps), production of medium-elastic objects & filling / casting applications.

Following is the POLY TI Molding Series:

- ▶ POLY TI AKD20
- ▶ POLY TI AKD20A
- ▶ POLY TI AKD30
- ▶ POLY TI AKD30A
- ▶ POLY TI AKD45
- ▶ POLY TI AKD50A
- ▶ POLY TI AKD65
- ▶ POLY TI AKD80
- ▶ POLY TI AKD95
- ▶ POLY TI AKD98
- ▶ POLY TI AKD99
- ▶ POLY TI AKD99 Silicone Oil Release Agent
- ▶ POLY TI AKD Sealer



Product Availability:

KSA, UAE, Bahrain, Kuwait, Oman, Lebanon, Egypt & Pakistan

Construction Chemicals



Construction Sealants & Molding Systems

Brand: Eagle Seal / Eagle Mastic

Silicone Sealant

Medium modulus acetoxysilicone sealant. This sealant is ready to use. After suitable joint preparation and masking, the sealant is gunned into place and tooled within 5 minutes, using a spatula which has been dipped in a soapy water.



Acrylic Sealant

Eagle Seal Acrylic Sealant is mono-component, water based acrylic sealant and caulking compound for professional decorators. It is tough, elastic, odorless and provides a durable seal gives good waterproofing property after drying.



Acetoxysilicone Sealant (Bath and Kitchen)

Eagle Seal for Bath and Kitchen is a 100% one-component acetoxysilicone cure, non-sag silicone sealant specially formulated to resist mold and mildew when fully cured. Eagle Seal for Bath and Kitchen has excellent adhesion to ceramics, tile board, corian, arborite and most acrylics.



Neutral Weather Sealant

Eagle seal weather Sealant is a neutral curing one component silicone sealant that has excellent weather, aging and UV resistance properties and is specially developed for the weather sealing of structural glazing, angled glazing, wood-glass composite units, roof glazing and conservatories.



Eagle Seal Pro Silicone Joint Sealant

Eagle Seal Pro is a multi purpose acetic one component silicone sealant for application in sanitary areas, ready-to-use in PE cartridges, applicable with silicone application guns. This product is made in Germany.



Product Availability:

KSA, UAE, Bahrain, Kuwait, Oman, Lebanon, Egypt & Pakistan

Construction Chemicals



Construction Sealants & Molding Systems

Brand: Eagle Seal \ Eagle Mastic

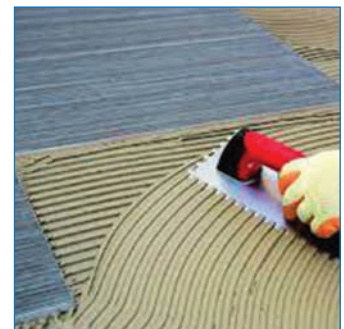
Eagle Seal RTV Silicone Rubber Molding Systems

Condensation tin cure molding RTV silicone rubber, tinbased silicone, also called condensation-cure silicone, are two-component materials which cure at room temperature and making this system flexible with high tear-strength rubbers.



Eagle Seal RTV AKD 40A for GRC Mold Making

AKD 40 A is a two-part condensation cure silicone rubber. It is used for mold making where it is mixed with its catalyst and then poured around a pattern to create a flexible silicone mold.



Tile Grout, Adhesive & Glue

Brand: Eagle Mastic / Unifix / UniGrout

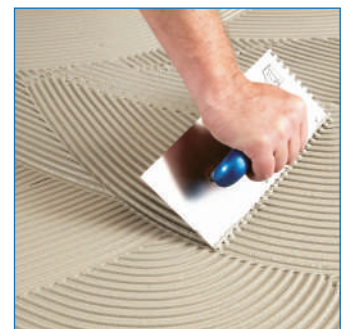
Glue for Marble Granite

Eagle Mastic (2-components polyester) is a synthetic resin-based adhesive with a specific weight between 1.1 and 1.65 gram/cm³.



Tile Adhesive

Unifix 401 and 402 are premixed cement-based water resistant mortars for fixing ceramics and glass tiles on walls and floors, applied internally and externally on fair face concrete, bricks and blocks.



Tile Grout

UniGrout 201 is a cement-based, polymer-modified tile grout mortar, for filling grout joints of ceramic wall and floor tiles, porcelain tiles, and mosaic tiles, for walls, floors, showrooms and swimming pools.



Product Availability:

KSA, UAE, Bahrain, Kuwait, Oman, Lebanon, Egypt & Pakistan

Construction Chemicals



Construction Foams

Brand: Dolphin (Al Muqarram Group)

HI Stick – PU Foam

Single component, moisture curing PU foam. Mainly used for sealing and insulation, filling of joints and cavities.



PU Foam Premium

Dolphin PU Foam is the premium quality Polyurethane Foam. It has excellent bonding strength, that adheres to the wide range of surfaces. Building insulation that can fill and enclose spaces between roof tiles, concrete slabs, wall cavities, drilled holes, frame construction, gaps around windows and other substrates.

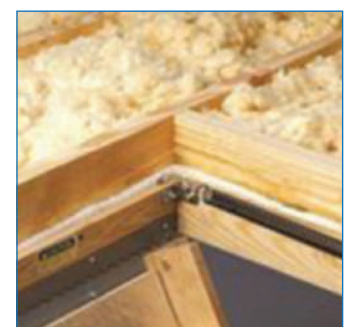
It is a single component material; has moisture resistance and self-expanding properties.



Fire Retardant PU Foam

Dolphin B2 Fire Retardant (Flame Retardant) PU Foam is a premium quality Polyurethane Foam. It has excellent bonding strength, that adheres to the wide range of surfaces. Building insulation that can fill and enclose spaces between roof tiles, concrete slabs, wall cavities, drilled holes, frame construction, gaps around windows and other substrates. It is a single component material; has moisture resistance and self-expanding properties.

It exerts a strong cohesive force on most material (Excluding gypsum, grease, and oily materials). Giving high performance of heat preservation and sound insulation without compromising the performance.



Product Availability:

KSA, UAE, Bahrain, Kuwait, Oman, Lebanon, Egypt & Pakistan

Power, Industrial & Hand Tools



- 66 ➤ Power Tools & Accessories
- 67 ➤ Industrial Tools
- 68 ➤ Cutting & Grinding Abrasive Disc
- 69 ➤ Generators & Air Compressors
- 70 ➤ Concrete Coring
- 71 ➤ Professional Hand Tools & Equipments
- 72 ➤ Generators, Chain Saws & Pressure Washers

Power, Industrial & Hand Tools

Power Tools & Accessories

Brand: AEG

POWERING PROFESSIONALS SINCE 1898.

AEG POWERTOOLS promises to draw upon its heritage and deliver exciting, high performance, innovative working solutions for the professional tradesmen of today and the future.

When we say they last, We mean it.

Best in class longevity. Unmatched power. Professional performance. We're prepared to put our money where our mouth is when it comes to our range of AEG power tools.

That's why we've extended the warranties across our entire power tool range. With an incredible 6 year tool warranty and 3 year guarantee for batteries and chargers, trade professionals trust its legendary durability. AEG Power tools are available to purchase in trade outlets across Europe, the Middle East and Africa.

AEG specializes in Lithium-Ion cordless drills and other battery powertools, hammer drills, metalworking equipment, woodworking equipment, percussion drills and accessories.

AEG Product Range

- ▶ Drilling And Breaking
- ▶ Fastening
- ▶ Woodworking
- ▶ Metalworking
- ▶ Site Equipment
- ▶ Accessories
- ▶ Combo Kits
- ▶ Batteries and Chargers

Product Availability:

KSA, UAE, Bahrain, Kuwait, Oman, Lebanon, Egypt & Pakistan

AEG

POWERTOOLS



Power, Industrial & Hand Tools

Industrial Tools

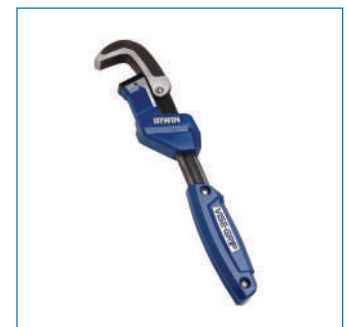
Brand: IRWIN

IRWIN Industrial Tools manufacture and distributes professional grade hand tools and power tool accessories worldwide for trade professionals who demand superior performance and durability on the job. IRWIN Industrial Tools brand portfolio features user-preferred category leaders such as VISE-GRIP® locking tools, MARATHON® circular saw blades, QUICK-GRIP® clamping tools, SPEEDBOR® wood boring drill bits, STRAIT-LINE® marking tools, UNIBIT® step drill bits and HANSON® taps and dies.

IRWIN Range Industrial Tools include:

- ▶ Accessory Storage Cases
- ▶ Chisels
- ▶ Circular Saw Blades
- ▶ Clamps
- ▶ Drill Bits
- ▶ Fastener Drive
- ▶ Hammers
- ▶ Handsaws
- ▶ Impact Accessories
- ▶ Levels & Squares
- ▶ Linear Edge
- ▶ Locking Tools
- ▶ Marking Tools
- ▶ Pipe Wrenches
- ▶ Pliers & Adjustable Wrenches
- ▶ Screw & Bolt Extractors
- ▶ Screwdrivers
- ▶ Snips
- ▶ Taps, Dies, & Sets
- ▶ Utility Knives & Blades
- ▶ Worksite Products
- ▶ Vises

IRWIN[®] TOOLS



Product Availability:

KSA, UAE, Bahrain, Kuwait, Oman, Lebanon, Egypt & Pakistan

Power, Industrial & Hand Tools

Cutting & Grinding Abrasive Disc

Brand: GRANDINETTI SRL

GRANDINETTI SRL is a company specialized in the production of abrasive discs and grinding wheels, founded in 1963 by Grandinetti brethren, by the name of GMA (GRANDINETTI GRINDING).

The earlier manufacturing technique of abrasive discs involved reinforcing an iron core and glass fiber. In 1982, to meet the needs of its customers and the market opportunities, the company specializes in building cate glass bulk with the acquisition of the MOLE PATRONE and the historic brand SISA (Italian Society Emery and Afni).

In the early '90s, the GRANDINETTI strengthens its presence in foreign markets through the acquisition of BIG-NET brand. Since 2000, following a logic product approach, the production of lamellar disks started.

In these fifty years we have always kept its roots by developing a cutting-edge entrepreneurial mindset. We made known in many foreign markets without neglecting the domestic market. A company open to the full service of our dealers, the importers and the most demanding consumers as regards the special production.

Today the GRANDINETTI, led by the second generation, is among the few companies on the national scene can boast the production of about 50,000 pieces daily, products with fully automatic machinery.

The company is distinguished by having different market according to the needs of three line production market:

- ▶ Abrasive Discs
- ▶ Flap Discs
- ▶ Mole Cate Glass

All the production is built in compliance with current following regulations

- ▶ EN 12413
- ▶ EN 13743
- ▶ FEPA

GRANDINETTI complies with UNI EN ISO 9001 and is also a member of the OAS (Organization for the Safety of Abrasives)

Product Availability:

KSA, UAE, Bahrain, Kuwait, Oman, Lebanon, Egypt & Pakistan

GRANDINETTI



Power, Industrial & Hand Tools

Generators & Air Compressors

Brand: Dynamik (Powered by Honda & FIAC)

Dynamik provides a complete range of Portable Power Generators and Air Compressors

Portable Power Generators

Our Dynamik portable power generators are powered by HONDA®. We offer a remarkable range of models and features, Our Portable Power Generators set the standard for portable power. From the jobsite to the campground, the stadium parking lot to the raceway infield, Our Generators work and play as hard as you do.

When the lights go out, it's more than just an inconvenience. Power outages can also result in financial loss due to spoiled food, lost work time, broken pipes, and even water damage to buildings and furniture. A quiet, reliable Generator can easily help keep your family safe and secure through power-related emergencies.

Legendary Honda reliability makes our generators the ideal backup power source for homes and businesses alike. Equipped with Honda engines, our generators have earned a hard-won reputation for smooth, quiet operation, and outstanding fuel efficiency.

It's no wonder, Honda Generators are prized in the construction and rental trades, and designated as official suppliers to many professional sporting events.

Portable Air Compressors

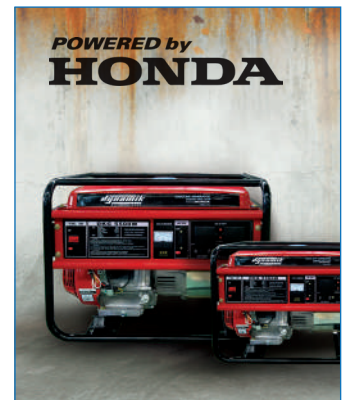
Our Dynamik portable air compressors are powered by FIAC - the company that is widely recognized for introducing the portable compressor is to the world back in 1977.

FIAC S.p.A. is a Italian Company recognized as a protagonists in the evolution of compressed air for 40+ years (1977 - Present). FIAC S.p.A. has always been renowned in the world of compressed air for the high quality of its products and for its customer service.

The UNI EN ISO 9001-2008 norms perfectly complement the policy of quality control that FIAC has adopted, based on continuous improvements aimed at the complete satisfaction of the final customer.

It is for this reason that, since 2003, with the assistance of the authorised body CERMET, FIAC adopted these norms for its quality control service.

dynamik®
Werkzeuge GmbH



Product Availability:

KSA, UAE, Bahrain, Kuwait, Oman, Lebanon, Egypt & Pakistan

Power, Industrial & Hand Tools

Concrete Coring

Brand: B+BTec

B+BTec introduce a complete new line of drilling systems, anchoring and saws. These machines are entirely designed, manufactured and assembled in our production facilities in the Netherlands and packed with new quality features.

The B+BTec R&D Division has developed a wide range of Bonds (the metal in which the diamond crystals are sintered) that are engineered for optimal cutting performance and blade life in Concrete, Brick, Masonry and Porotherm Brick & Blocks and are specially designed for today's construction materials that, due to their configuration or size, are difficult or impossible to cut using traditional methods.

Stainless Steel Cutting and Drilling Equipment

Brand: B+BTec (Diamond3)

Diamond3® is the premier manufacturer of Professional Equipment, Tools & Accessories for Tile, Stone, Sanitary Ware, Masonry, Concrete & Brick. Our product line includes: Stainless Steel Cutting Equipment, Drilling & Grinding Equipment, Specialty Diamond Blades, Diamond Drill (Core) Bits and Grinding Wheels.

Diamond3® offers a complete range of the following:

- ▶ Manual Tile Cutters
- ▶ Tile Cutting Systems
- ▶ Diamond Tile Saws
- ▶ Diamond Tile Blades
- ▶ Diamond Tile Drills

B+BTec



Product Availability:

KSA, UAE, Bahrain, Kuwait, Oman, Lebanon, Egypt & Pakistan

Power, Industrial & Hand Tools

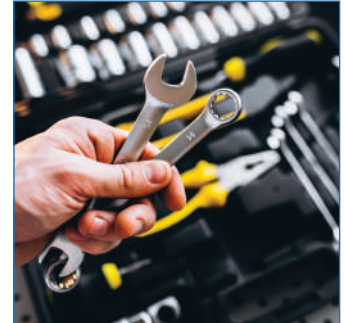
Professional Hand Tools & Equipments

Brand: UNIXACT / FANTOM / BMI

We distribute professional grade hand tools and equipments throughout the MENA region for trade professionals who demand superior performance and durability on the job.

Our Range include the following hand tools & equipments:

- ▶ Wood Cutting Saw
- ▶ Metal Cutting Saw
- ▶ Chisels
- ▶ Screw Drivers
- ▶ Spanners
- ▶ Adjustable Wrenches
- ▶ Torque Wrenches
- ▶ Lug Wrenches
- ▶ Planes
- ▶ Corner Clamps
- ▶ F-Shaped Clamps
- ▶ G-Shaped Clamps
- ▶ F-Type Trigger Clamp
- ▶ Spring Clamps
- ▶ Knives & Blades
- ▶ Filling Scrapers
- ▶ Filling Knives
- ▶ Steel Trowels
- ▶ Hammers
- ▶ Mallets
- ▶ Measuring Tape
- ▶ Channel Lock Pliers
- ▶ Top Cutting Pliers
- ▶ Locking Pliers
- ▶ Aviation snips
- ▶ Hex & Trox
- ▶ Wire stripping and crimping tools
- ▶ Drill Bits
- ▶ Saw Blades
- ▶ Spirit Levels
- ▶ Pressure Lubricators
- ▶ Spray Gun
- ▶ Guns for Sealing Compounds
- ▶ Paint Brushes
- ▶ Masking Tape
- ▶ Safety Tape
- ▶ Safety Equipment & Tools



Product Availability:

KSA, UAE, Bahrain, Kuwait, Oman, Lebanon, Egypt & Pakistan

Power, Industrial & Hand Tools



Generators, Chain Saws & Pressure Washers

Brand: BlackMax

BlackMax offers a complete range of the following:

- ▶ Chainsaw
- ▶ Generators
- ▶ Pressure Washer



Product Availability:

KSA, UAE, Bahrain, Kuwait, Oman, Lebanon, Egypt & Pakistan

Sustainable Solutions



- 74 ▶ **Lighting Systems**
- 75 ▶ **Solar Panels**
- 76 ▶ **Paints**
- 77 ▶ **Specialized Coating Solutions**
- 78 ▶ **Oil Spill Recovery**
- 79 ▶ **Oil Spill Tackle**

Sustainable Solutions

Lighting Systems

Brand: Tungsram

Tungsram is an innovative global technology service and manufacturing company, headquartered in Hungary. For nearly 123 year, Tungsram is playing a leading role in manufacturing technology and service solutions.

Tungsram Group offers premium quality lighting solutions for indoor and outdoor applications, traditional lamps, automotive, as well as drivers & transformers. Tungsram is present in 22 countries with 23 subsidiaries and exporting 98% of its production, the company leverages sales into more than 100 global markets. Its highly-productive supply chain is centered around its 5 factories in Hungary working to the highest quality standards with its 4000+ employees and a network of 1600 suppliers and partners around the globe.

Tungsram Group invests into future-safe technologies and dynamically growing global markets, such as smart solutions, smart cities, indoor farming and healthcare, while still strengthening the lighting core of its business.

Tungsram Product Range

Light Sources

- ▶ LED Lamps
- ▶ High Intensity Discharge
- ▶ Linear Fluorescent
- ▶ Compact Fluorescent Non-Integrated
- ▶ Compact Fluorescent Integrated
- ▶ Halogen
- ▶ Incandescent
- ▶ Special Applications
- ▶ Showbiz™ Lamps
- ▶ Automotive

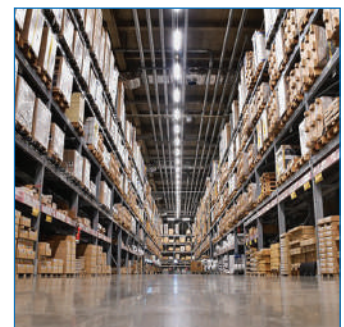
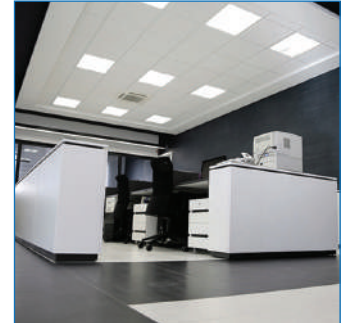
Luminaires & Systems

- ▶ Indoor Luminaires
- ▶ Industrial Luminaires
- ▶ Outdoor Luminaires
- ▶ Agritech Series
- ▶ LED Systems

Product Availability:

KSA, UAE, Bahrain, Kuwait, Oman, Lebanon, Egypt & Pakistan

TUNGSRAM™



Sustainable Solutions

Solar Panels

Brand: ZN Shine

A leading PV Module Manufacturer. Founded in 1988, a BNEF Tier 1 module manufacturer with over 32 years of manufacturing excellence, ZNSHINE SOLAR has developed as a PV plant partner and investor having delivered bespoke EPC solutions and O&M services.

ZNSHINE aims to become one of the largest utility-scale solar project developers, having its global footprints in Japan, India, Germany, Italy, Switzerland, UK, the USA, Canada, Chile, Australia and Africa.

ZNSHINE Solar has championed fast implementation of latest PV technologies in its manufacture hence shortened time of best featured modules to PV projects globally. Awarded as a 'Green Plant' and "China Well-known Brand", ZNSHINE aims to become one of the largest utility scale solar Project developers, having its global footprints in Japan, India, Germany, Italy, Switzerland, UK, USA, Canada, Chile, Australia and Africa.

Innovative Technology

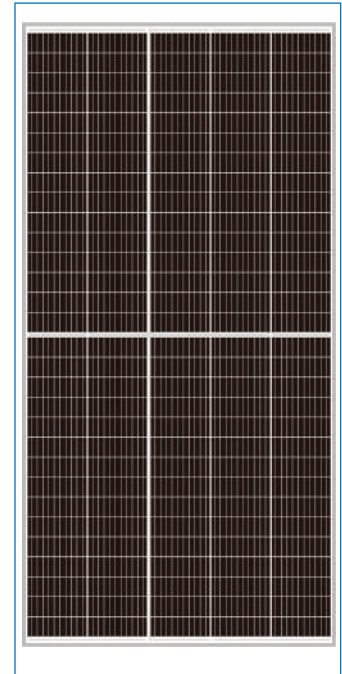
ZNShine Solar R&D team in cooperation with China University of Science and Technology developed the Graphene Coating Solar Modules Series.

An innovative, self-cleaning technology capable to reduce Operation and Maintenance costs and increase power generation capacity.

Graphene is the world's thinnest, lightest, most flexible, strongest, and most conductive nano material. Tests have shown that graphene has hydrophilic, self-cleaning and photocatalyst properties: great benefits for solar modules.

ZN Shine Product Range

- ▶ Bifacial Half Cells-Light Double Glass
- ▶ Light Double Glass with Half Cells
- ▶ Single Glass with Full Cells
- ▶ Single Glass with Half Cells



Product Availability:

KSA, UAE, Bahrain, Kuwait, Oman, Lebanon, Egypt & Pakistan

Sustainable Solutions



Paints

Brand: Caparol

Caparol, the premium brand of DAW entered the Middle East market in 1998 with its technologically advanced, modern and sustainable product range. Headquartered in Ober-Ramstadt, Germany, DAW Group is one of the largest private paint manufacturer in Europe and has a global presence through various brands of which Caparol is the leading brand for Architectural and Decorative paints in Germany.

With a production plant in Dubai, Caparol is spearheading the drive of architectural creativity in the Middle East and African Countries. The striped elephant has been synonymous with reliability, technical expertise and outstanding product performance. Some of our prestigious projects include GEMS International School, Akoya by Damac, Rove Hotels, Nshama Town Square, La Ville Hotel and Resorts - citywalk, BoxPark, The Ritz Carlton DIFC, Sofitel Hotel JBR, Shorooq Mirdif, Jumeirah Village Triangle Villas, etc. and we look forward to supporting the region with innovative, Eco-friendly and sustainable solutions for a healthier living.

Caparol Range

Interior Paints

A wide selection of premium interior emulsions and designer finishes which inspire a healthy living.

Exterior Paint Solution

Environmentally friendly exterior finishes and insulation solutions with excellent UV protection and outstanding durability.

Flooring Solutions

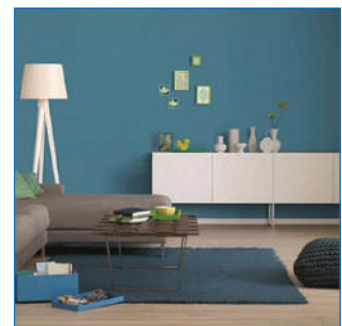
Functional Epoxy and Polyurethane coatings to protect floors and building spaces.

Miscellaneous

A comprehensive range of quality fillers, adhesives and base coats to ensure effective substrate preparation.

Application Solutions

A wide variety of high-quality tools to ensure the effective application of interior and exterior emulsions.



Product Availability:

KSA, UAE, Bahrain, Kuwait, Oman, Lebanon, Egypt & Pakistan

Sustainable Solutions



Specialized Coating Solutions

Brand: Numastec

Astec - Numastec, a joint venture created and based in the USA, combined their expertise in development and manufacturing, to bring their proven new technology to markets all over the world.

The company is registered under ISO 9001: 2000. We manufacture and distribute: Re-Ply Roofing systems and fluid-applied membrane systems for the renovation of roofs, walls, and other industrial surfaces. Our elastomeric products and systems provide seamless waterproof and weather tight barriers, as well as offering high reflectivity and dissipation of heat, all while reducing UV light degradation.

Numastec ceramic membranes, roofing, wall and industrial systems have been tested beyond typical standards for longevity, wind resistance, durability, pliability, abrasion resistance, salt, chemical, and corrosives resistance, all while reducing thermal shock damage and the high cost of temperature control.

Numastec offer solutions for:

- ▶ Energy Savings in Industrial, Commercial & Residential Facilities.
- ▶ Insulation of Roofing, Walls, Equipment Over all Materials.
- ▶ Prevention and Protection Against Rusting & Corrosion.
- ▶ Blocking Heat Loss or Gain.
- ▶ Stopping Condensation.
- ▶ Concrete Protection & Sealing.
- ▶ Prevent Deterioration from Harsh Environments.
- ▶ Refrigerated Trucks & Facilities.
- ▶ Fire Resistance and Proofing.
- ▶ Underwater Protection.
- ▶ Chemical Protection.
- ▶ Create a seamless, weather tight barrier.
- ▶ Stays Pliable and weather tight in all climates.
- ▶ Creates an easy care, linen like satin finish.
- ▶ Can be bonded with pre-painted surfaces.
- ▶ Reflects away heat and harmful UV radiation.
- ▶ Surpasses R19 heat gain testing.
- ▶ Does not shrink or crack in temperature extremes.
- ▶ Withstands sea mist and airborne corrosives.
- ▶ Resists Fungi and algae growth.
- ▶ Saves temperature control and cooling costs.
- ▶ Greatly reduces risk of thermal shock damage.
- ▶ Restores and extends the life of original walls.
- ▶ Cures to a highly fire resistant surface.



Product Availability:

KSA, UAE, Bahrain, Kuwait, Oman, Lebanon, Egypt & Pakistan

Sustainable Solutions



Oil Spill Recovery

Brand: Directa Plus

G+® Technology

G+® is a Directa Plus brand, we offer a range of graphene nanoplatelets-based products – either ready-to-use or custom-blended to meet customers' specific technical requirements.

Benefits of G+® products:

- ▶ Chemical Free
- ▶ Certified as non-toxic
- ▶ High Purity
- ▶ Consistent Quality
- ▶ Taylor-made particles shape
- ▶ Production capacity: 30 tonnes/year
- ▶ Abundant, safe and non-toxic raw material

Patented, Modular process

Our production process uses a unique technique we call Plasma Super Expansion. Starting from natural graphite, each step of the process – expansion, exfoliation and drying – creates graphene nanoplatelets-based materials ready for a variety of uses and available in different forms such as powder, liquid and paste.

Our production process produces a highly consistent graphene nanoplatelets product - an important factor for commercial customers - and does not need any chemical or solvent additives.

Oil-Spill recovery

GRAFYSORBER® is an innovative graphene-based material ideal for tackling environmental emergencies, including both historical and recent pollution

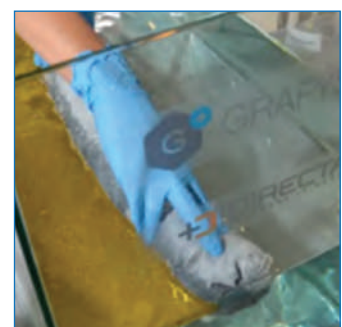
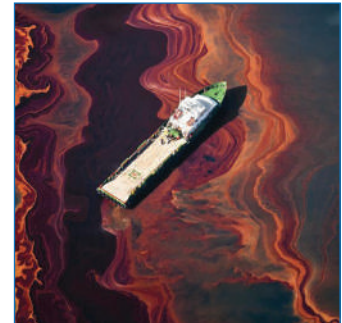
- ▶ At least five times better than conventional solutions
- ▶ Very fast adsorption kinetics
- ▶ Recovery of adsorbed hydrocarbons and re-use of the material

Commercial Products

A wide range of oil adsorbent barriers and pillows is available in different sizes and formats. Directa plus has the expertise required to setup a mobile production unit and able to produce on site and on-demand the GRAFYSORBER® needed to clean up the contamination

Product Availability:

KSA, UAE, Bahrain, Kuwait, Oman, Lebanon, Egypt & Pakistan



Sustainable Solutions

Oil Spill Tackle

Brand : Spill Tackle

Spill Tackle is a superior performing absorbent for business, industry and home use alike. Offering an extremely sustainable, high performing product, that is cost effective for all levels of application.

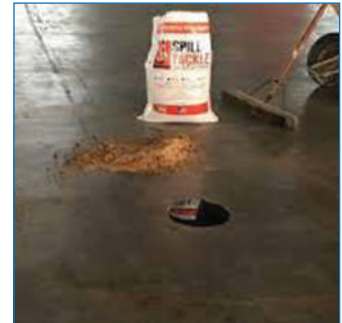
Spill Tackle is USDA bio-preferred, up to 6x more absorbent and safer than clay and is USEPA leachate tested. Offering less expensive and more productive options to clients in a wide range of industries across the nation.

Industries "Spill Tackle" Serves:

- ▶ Aviation Industry
- ▶ City & State Municipalities
- ▶ Environmental Response & Recovery
- ▶ Food Processing Companies
- ▶ Hazardous Waste Hauling
- ▶ Hydraulic Industry
- ▶ Manufacturing & Fabrication Facilities
- ▶ Oil and Gas Exploration
- ▶ Power/Utility Companies
- ▶ Rendering Plants
- ▶ School Districts and Bus Barns
- ▶ Transportation & Logistics
- ▶ Wastewater Plants

Spill Tackle Product Range

- ▶ Super Sack (1200-1400 lbs Super Sacks)
- ▶ Drum (55 gal Drums)
- ▶ Bucket (5 gal Buckets)
- ▶ Spill Kit (Emergency and Refill Spill Kits)
- ▶ Bag (20lbs, 5lbs, & 2lbs bags)
- ▶ Sock (4' & 10' Socks)



Product Availability:

KSA, UAE, Bahrain, Kuwait, Oman, Lebanon, Egypt & Pakistan

IKK Group of Companies

The IKK Group is a major business institution serving the majority of the MENA region in the Industrial, Construction, Manufacturing and Trading fields, as well as in Specialized Maintenance and Services. After almost five decades in the business, the IKK Group is recognized as one of the leading private business corporations in the region with a major focus on the Construction Industry in general. With a consolidated turnover in excess of 4 billion SAR, the group has figured consistently in the top 50 private Saudi groups over the past decade.

Today, the Group is a pioneer in waterproofing, weather proofing, construction and building material supplies, construction steel products, manufacturing and the fabrication and sales of UPVC, CPVC and high density polyethylene pipes and fittings, as well as in the sales of sanitary products, accessories and many other items and technologies used in the industry. The Group is also present in the food, decoration, and multimedia business domains.

"Hire well, Train well, Pay well and Treat well."

These are the words of our founder Shk. Isam K. Kabbani and our business philosophy revolves around these principals.

For more information, please visit:
www.ikkgroup.com

Mission & Vision

Mission

Is to provide our part of the Arab World with local and reliable services in a variety of sectors and products. To create employment to thousands of personnel and in-house training for hundreds of young Arab graduates in crucial sectors to the benefit of the IKK Group, the graduates themselves and their own communities. To set a good example of our basic business philosophy: "Hire well, train well, pay well and treat well."

Vision

Is to maintain and improve our leading position as a group whose reputation is built on the ability to completely satisfy customers by providing high quality services. As specialists in their respective fields, our teams of professionals are dedicated to a standard of excellence for quality and performance, through continuous development, which will set standards in our industry. We are simply providing solutions for a future of success.

IKK Group of Companies



+100
Divisions



+20
Companies



+14,000
Employees



13
Countries

Major Activities



Contracting



Manufacturing



Trading



Services



Multimedia

Contact Information

- **UNITECH Sales Offices / Entities**
- **SFSP Factories**
- **Engineering & Design**
- **Marketing & Multimedia**

Contact Information

Sales Offices/Entities

KINGDOM OF SAUDI ARABIA

unitech.ksa@ikkgroup.com

Jeddah

Tel : +966 12 627 8222

Mak kah/Taif

Tel : +966 12 541 1206

Mad inah

Tel : +966 14 842 1095

Yanbu

Tel : +966 14 390 1499

Khamis Mushayt

Tel : +966 17 237 5929

Gizan

Tel : +966 17 321 6660

Riyadh

Tel : +966 11 292 8200

Qassim / Buraidah

Tel : +966 16 382 3946

Skakah / Qurayyat

Tel : +966 14 626 3904

Tabuk

Tel : +966 14 423 5203

Dammam

Tel : +966 13 859 0097

Hufuf

Tel : +966 13 530 1474

Jubail

Tel : +966 13 361 4390

UNITED ARAB EMIRATES

Dubai - Al Rashidiyah

unitech.dubai@ikkgroup.com

Tel : +971 4 2591 773

Abu Dhabi - Musaffah

unitech.auh@ikkgroup.com

Tel : +971 2 552 3393

BAHRAIN

Manama

unitech.bahrain@ikkgroup.com

Tel : +973 17 874 897

KUWAIT

Kuwait City

unitech.kuwait@ikkgroup.com

Tel : +965 2 4924 937

JORDAN

Amman

unitech.jordan@ikkgroup.com

Tel : +962 6 556 3030

Aqaba

unitech.jordan@ikkgroup.com

Tel : +962 6 556 3030

OMAN

Muscat

unitech.oman@ikkgroup.com

Tel : +968 24 591 006

LEBANON

Beirut

unitech.lebanon@ikkgroup.com

Tel : +961 1 858 277

EGYPT

Cairo 6th of October City

unitech.egypt@ikkgroup.com

Tel : +20 2 3820 6477

PAKISTAN

Lahore

unitech.pakistan@ikkgroup.com

Tel : +92 42 32301578

SFSP Factories

SFSP - KSA

Specialized Factory for Steel Products

sfsp.jeddah@ikkgroup.com

3rd Industrial City / Jeddah

Tel: +966 12 637 4482

SFSP / UAE

SIGMA Factory for Steel Products

sfsp.uae@ikkgroup.com

DIC (Dubai Industrial City)

Tel : +971 4 818 1919

SFSP / EGYPT

Specialized Factory for Steel Products

sfsp.cairo@ikkgroup.com

6th of October City Giza

Tel : +20 2 3820 6477

SFSP / LEBANON

Specialized Factory for Steel Products / s.a.r.l

sfsp.lebanon@ikkgroup.com

Tanayel, Bekaa

Tel: +961 8 514 290

Engineering & Design

GERMANY

unitech.germany@ikkgroup.com

Unitech Deutschland GmbH

Stuttgart, Germany

Tel : +49 711 6868 7222

Marketing & Multimedia

Multi-D s.a.r.l

multi-d@ikkgroup.com

Multi-D

Beirut, Lebanon

Tel : +961 1 841 155

Customer's First Choice for Building and Construction Materials

40⁺ SINCE 1979
**YEARS
OF EXPERIENCE**

www.unitech-ikk.com

Connect with us on Social Media:



UNITECH

For Building and Construction Materials

