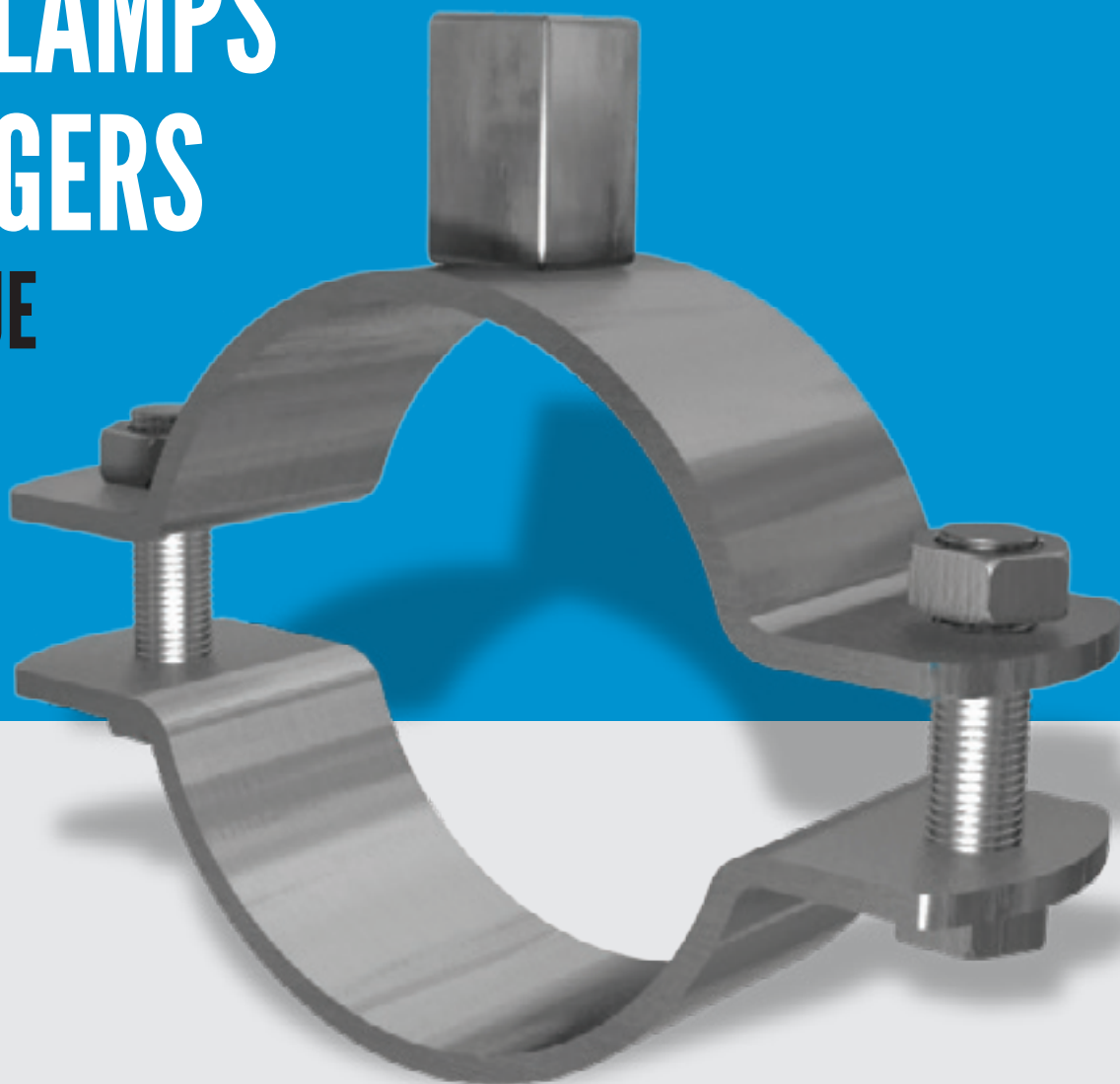


Specialized Factory for Steel Products
SIGMA Factory for Steel Products



PIPE CLAMPS & HANGERS CATALOGUE

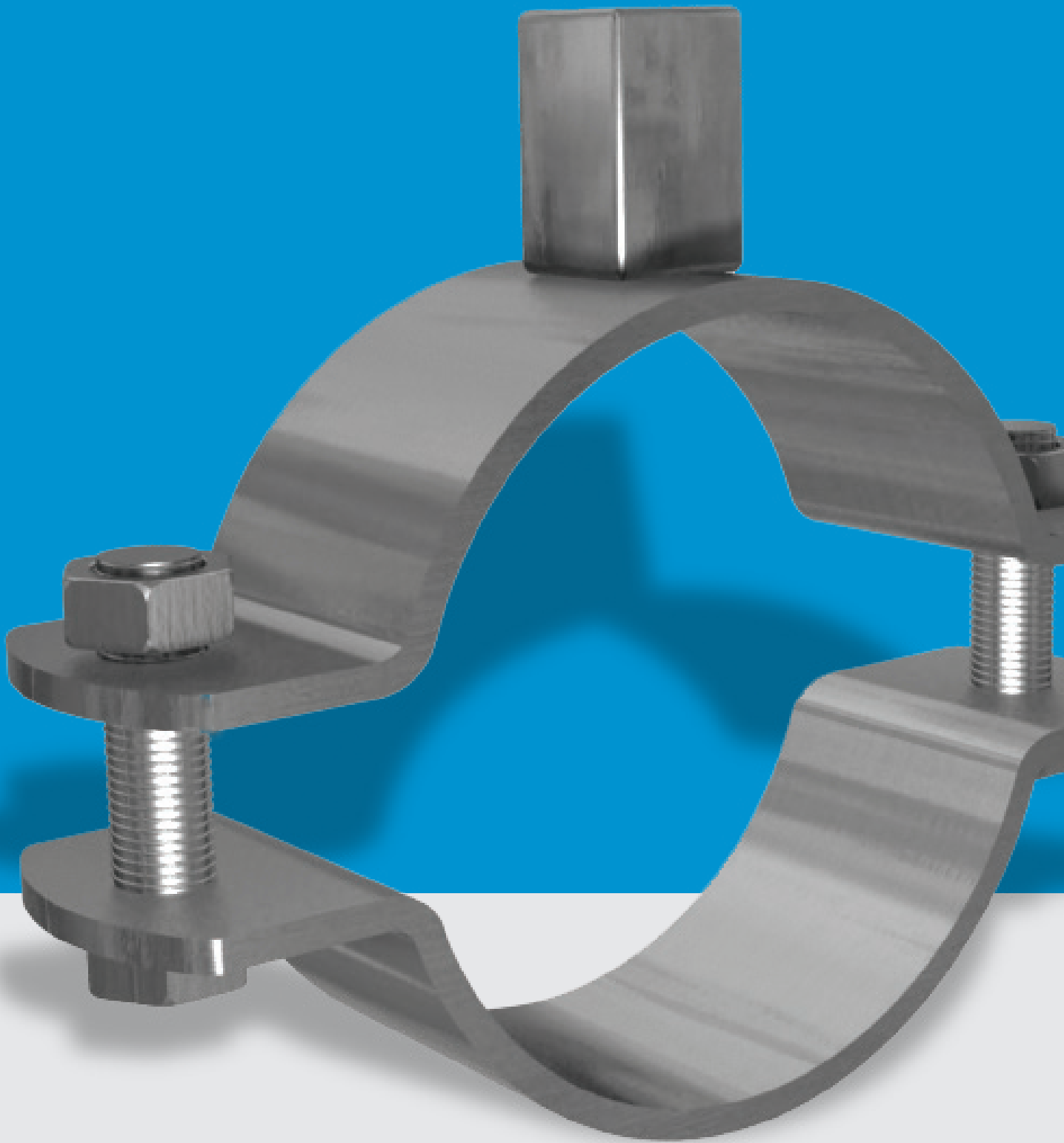


www.ikkgroup.com

INDEX

Pipe Clamps & Hangers

- About SFSP	4
- Pipe Clamps & Hangers	22
- Cable Tray Support System	32
- Threaded Accessories	36
- Technical Data	42
- Locations	46



www.sfsp-ikk.com



ABOUT SFSP



Specialized/Sigma Factory for Steel Products (SFSP) was first established in KSA in 1989 and has been expanding ever since through a variety of products and through its geographical presence.

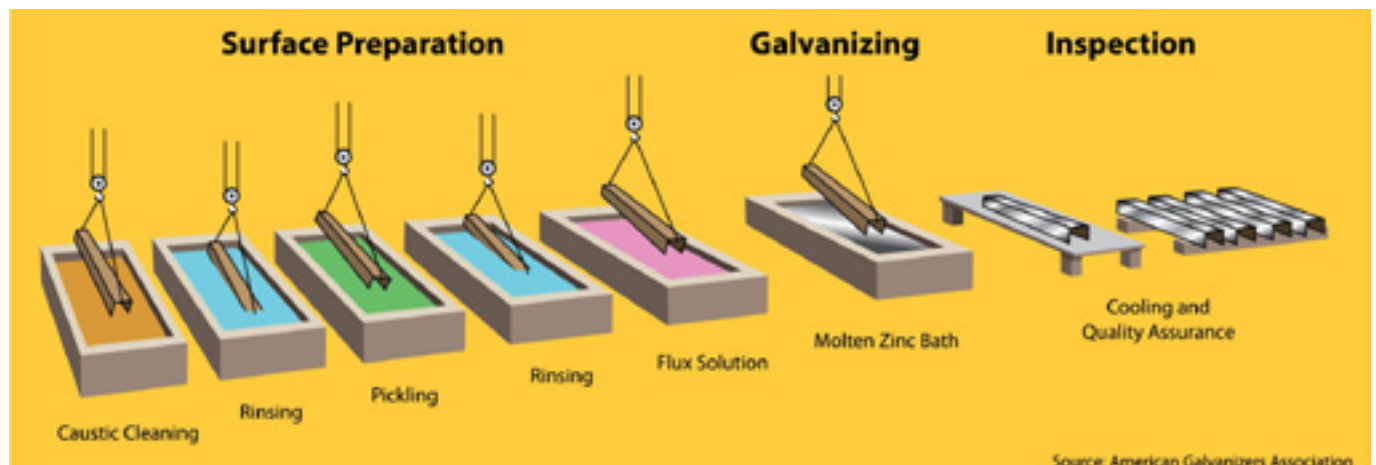
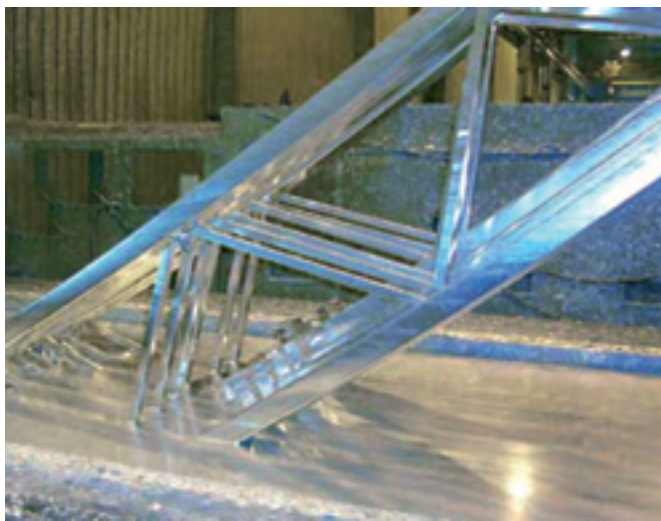
Production at the factory is observed using modern practices of manufacturing methods in the steel construction industry with a definite compliance to international standards of fabrication.

SFSP has manufacturing facilities in KSA, UAE, Egypt, and Lebanon. SFSP adapts quickly and easily to market demands and requirements. The factory is operating a top of the line production machinery, fully automated with highest technology to ensure quality and maintain speed with delicacy.

Quality at SFSP is uncompromised; the factories have been able to acquire ISO 9001: 2015 Quality Management System, ISO 14001:2015 Environmental Management certified factory, and OHSAS 18001:2007 Occupational Health and Safety Management factory.

HOT-DIP GALVANIZATION

SFSP has an in-house state of the art Hot-Dip Galvanization facility, which permits a full control of the quality of its finished products, offering better services to our clients globally.





Specialized Factory for Steel Products Co. Ltd

www.sfsp-ikk.com

Specialized Factory for Steel Products Co., Ltd, which is part of Isam Khairi Kabbani Group of companies is a leading fabricator of steel construction products serving the kingdom of Saudi Arabia since 1989.

The factory operates under TQM ISO modules, using the latest modern technology in the steel fabrication and manufacturing industry in conformity with International standards for safety and in compliance with the environmental regulations in the Kingdom.

The factory has inaugurated its new manufacturing facilities which is located in the 3rd Industrial Area of Jeddah with a total built facilities of 37,000 squared meters.



The facilities include two manufacturing areas, a hot dip galvanization advanced section, warehousing areas and administrative building. The project is an advanced environmental low emissions factory built with a definite consideration of the safety of its workers and visitors.



TECHNICAL SERVICES

A crucial factor in the job of a factory is to provide continuous technical services and consultations. That's why SFSP has invested in a professional team of researchers and specialists.

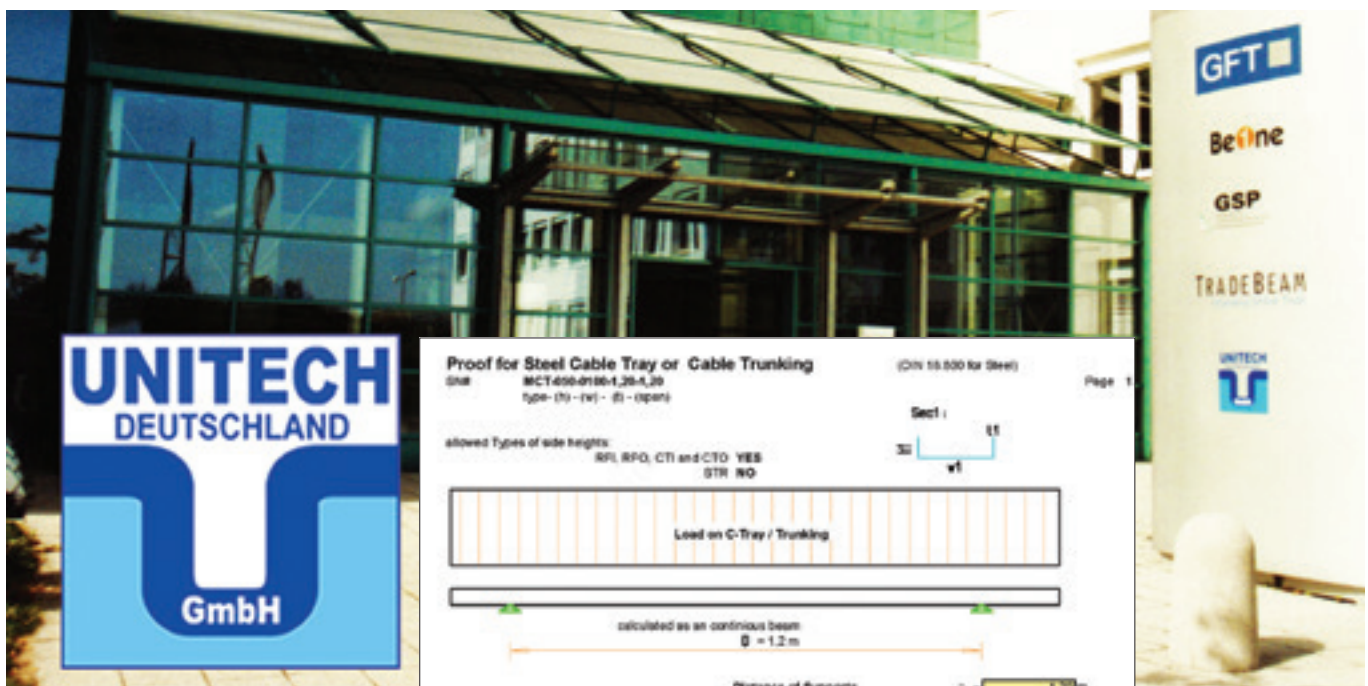
SFSP has recruited brilliant graduates and experienced engineers having the appropriate knowhow on the on latest technology changes and development in the steel building materials industry.

The product range is developed and updated according to the relevant standards of fabrication across markets, whilst the business processes are evaluated to achieve maximum efficiency.

SFSP R&D Core Objectives

- Carry out responsibilities effectively in a safe and healthy work environment.
- Develop and implement research programs relevant to the products and solutions introduced and ensure that the results are communicated clearly in-house and among the clients , concisely and accurately.

DESIGN AND ENGINEERING OFFICE - GERMANY



Unitech Deutschland GmbH is the design office of Unitech for Building and Construction Materials and is situated in Stuttgart, Germany.

Proof for Steel Cable Tray or Cable Trunking			
(CIN 15.030 for Steel)			
Page 1			
allowed Types of side heights: RFL, RPD, CTI and CTD: YES STR: NO			
Load on C-Tray / Trunking			
calculated as an continuous beam $\ell = 1.2 \text{ m}$			
Distance of Supports Load on Cable Tray			
Cable Tray Sec 5:			
*** Center Load only possible for $wf \leq 300 \text{ mm}$!!			
SN	Mechanical Properties	Equations	Figures unit
1	Type of materials used	$DIN 50153$	5.255.2802
2	Allow. 0.2 Yield Stress up to 50°C	$F_{0.2} = F_{0.2} / 1.5$	21.82 N/mm ²
3	Allow. Shear Stress		12.60 N/mm ²
4	Allow. Deflection	$\delta / 200 =$	6.00 mm
5	Modulus of Elasticity		21.000 N/mm ²
Applied Loads			
1	Distance of Supports	$D =$	120.00 cm
2	Self Weight Cable	$W_{c} =$	1.74 N/mm
3	Self Weight Cable Tray	$W_{tr} <$	0.02 N/mm
4	Self Weight	$W_{tr} = W_{c} + W_{tr}$	1.76 N/mm
Design of Elements			
1	Cable Tray / Trunking		
1	Description	Equations	Figures unit
Structural Properties of Sec. 5			

SOCIAL RESPONSIBILITY

Being socially responsible is a part of who we are and how we do our business. We aim to provide useful products and services, to provide jobs and development opportunities for our communities, and to gain satisfaction through meaningful work.

We make a difference by acting on the values and principles of our societies and we inspire others to do so. At SFSP, we anticipate and reduce threats caused by environmental changes or natural disasters, and we are well adapted to significant social changes.

We contribute to a more sustainable society by means of value and support to our consumers, supply chains, and stakeholders. We are keen to identify ways they can improve our impacts on the people and places we work and live in, and thereby become more valuable and valued members of society.

- Organizational governance: We promote accountability and transparency at all levels, thus, promoting responsibility
- Human care: We treat individuals with respect; and make efforts to help members of vulnerable groups
- Labor practices: We provide just, safe and favorable conditions to workers
- Environment: At SFSP, we identify and improve environmental impacts of our operations, including the resource use of natural resources and waste disposal.



- Fair operating practices: Practicing accountability and fairness in dealings with other businesses

At SFSP, we are committed to continuous improvement ongoing learning, process review and innovative thinking that foster new initiatives; and better practices. Our environmental programs evolve to meet today's changing needs while; protecting resources for future generations.

HEALTH AND SAFETY

The Factory Management regard the health and safety of the employees, clients and all others that may be affected by their operations to be of a major importance.

In support of this, the management promotes health and safety throughout the Factory's operations and endeavour to engender a positive attitude in all employees towards the prevention of accidents and maintenance of healthy working arrangements.

The Factory satisfies the requirements of the Health, Safety and related legislation by setting out the responsibilities of all levels of staff and the arrangements for carrying out those responsibilities and in particular do what is reasonably practicable to:

1. Maintains safe & healthy working conditions.

2. Ensures that all facilities and equipment are safe and properly maintained.
3. Provides products that can be applied and used safely and without risk to health.
4. Provides and maintain working procedures, that are safe and without risk to health, throughout the its operations in respect of:
 - The use, handling, storage, transports and disposal of materials and substances.
 - The use of factory equipment.
 - Potential emergency situations, including first aid, fire and escape of substances.
5. Ensure the competence of employees.

The factory is an OHSAS 18001:2007 Occupational, Health and Safety Management certified Factory.



ENVIRONMENTAL AWARENESS

SFSP is committed to the following:

- Compliance with all statutory and regulatory requirements related to its activities, products and services and the environmental aspects.
- Identifying quality and environmental objectives by review and audit of the processes both in-house and on-site.
- Formally setting objectives based on the results of the process reviews and their significance in relation to their impact on the environment and the continual improvement of the quality and environmental management system.
- Implementing management programs to achieve these objectives.
- Investing in a well-trained and motivated workforce.
- Working closely with suppliers and customers to ensure mutual understanding and benefits of the environmental aspects consideration.
- Reviewing our policy and objectives as part of the Management Review Process.
- Communicating this policy to all persons working for or on behalf of the organization.
- Preventing and minimizing Pollution to the environment.



SFSP operates under environmental management system certification BS EN ISO 14001:2004 and maintain it through registration and annual review.



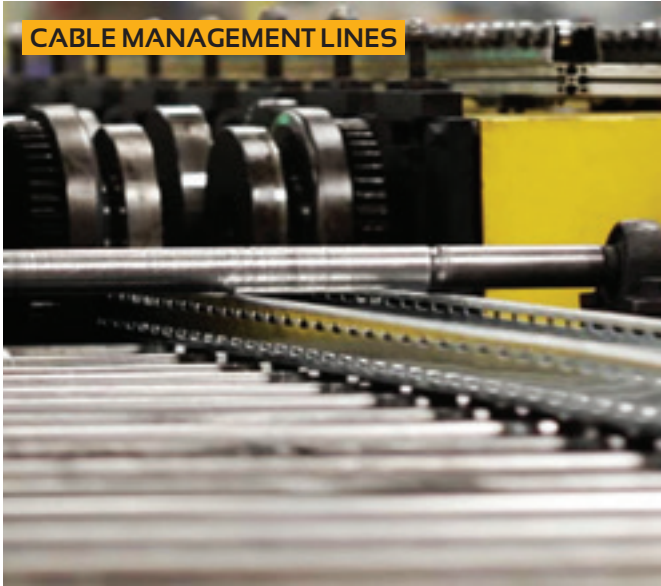
SFSP facilities are equipped with the most technologically advanced machinery amongst are Laser Cut Machines, Robot Bending Sets, Welding Robot Sets, sophisticated Cable Management Production Lines, as well as Specialized Industrial Sections for its Hot Dip Galvanization facilities.



SFSP MACHINES

SFSP latest machineries ensure a top - notch high end products delivered with accuracy and within a timely manner.

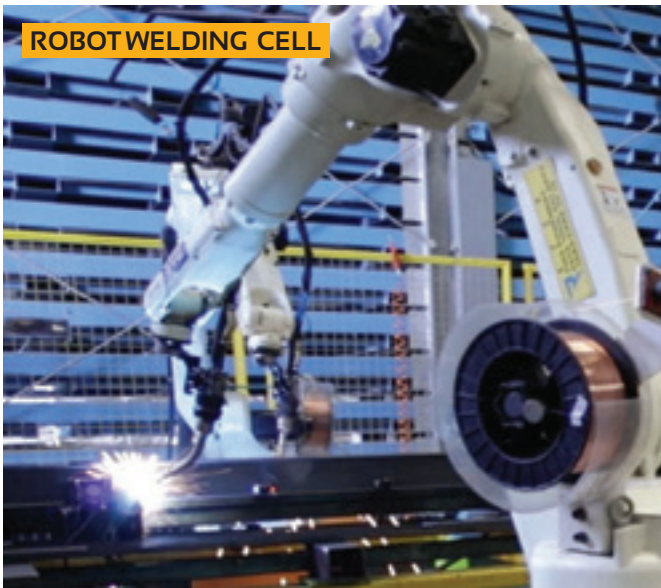
CABLE MANAGEMENT LINES



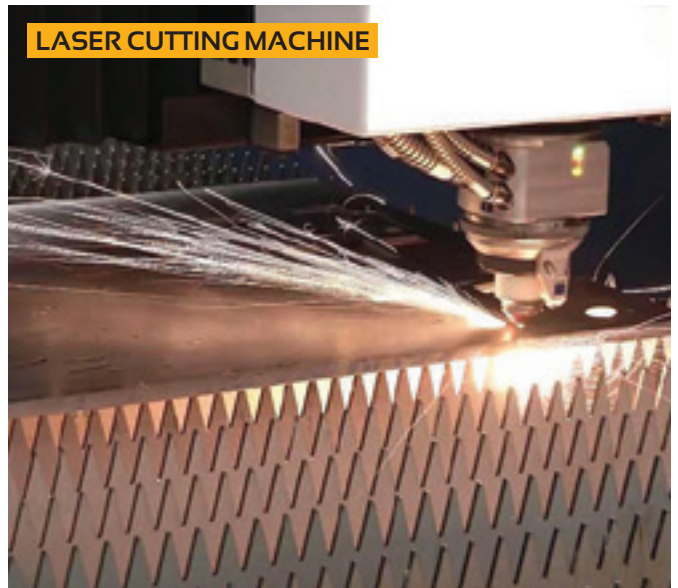
ROBOT BENDING CELL



ROBOT WELDING CELL



LASER CUTTING MACHINE



CUSTOM BENDING



FULLY AUTOMATIC





LASER DESIGN & CUTTING



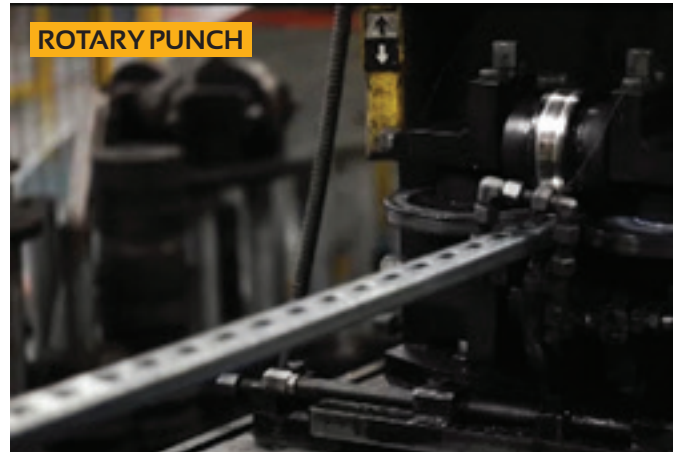
ROBOT WELDING



ROBOT BENDING



ROTARY PUNCH



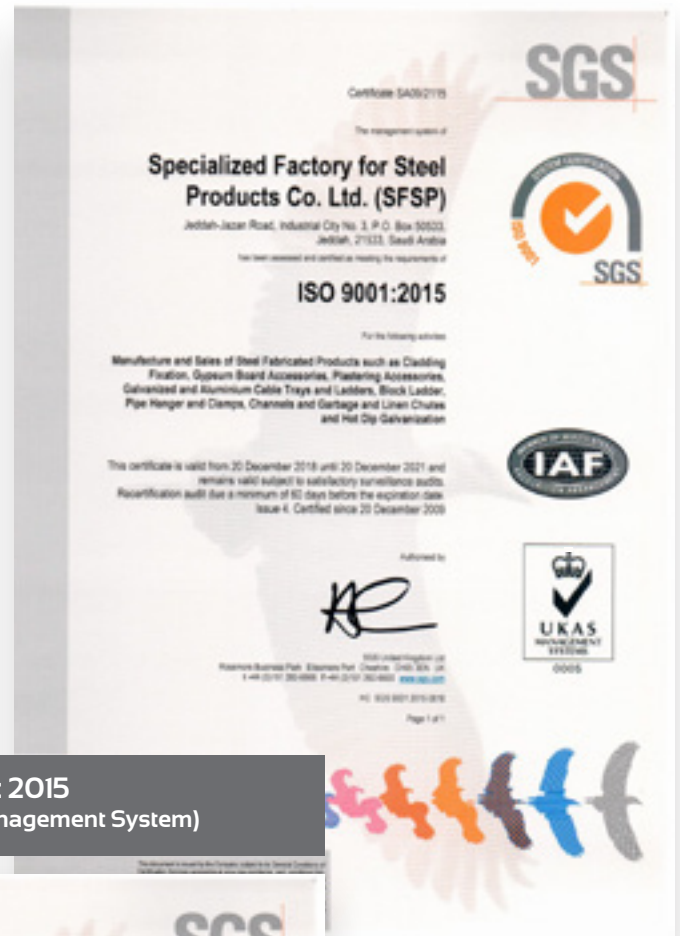
WELDED WIRE MESH



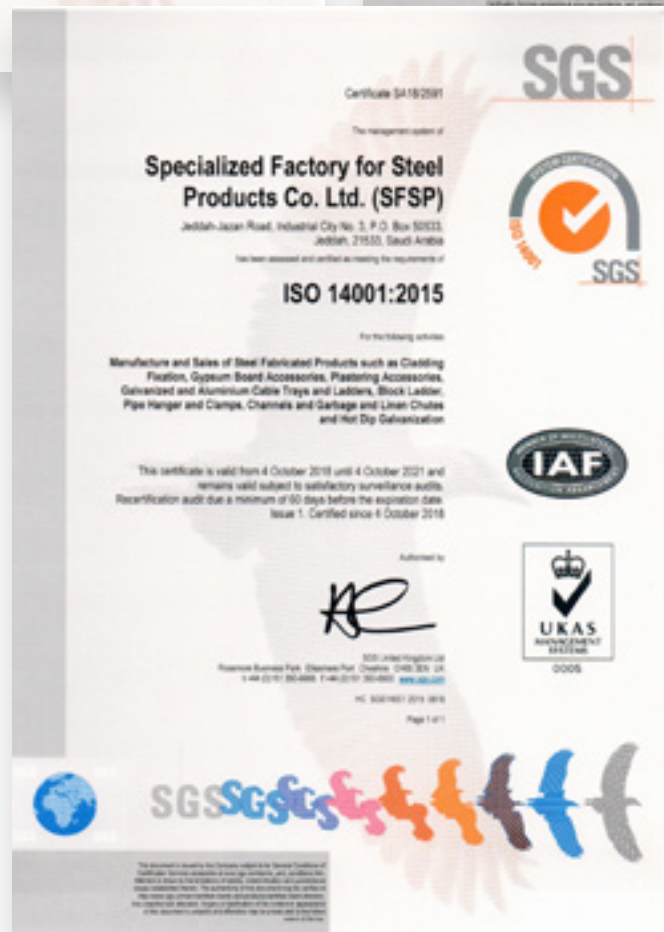
ISO 45001: 2018
(Occupational Health & Safety)



ISO 9001: 2015
(Quality Management Systems)



14001: 2015
(Environmental Management System)



STD 096 (Q-Mark Certificate)



CERTIFICATE OF REGISTRATION

This is to certify that

Sigma Factory for Steel Products

P.O. Box 37991
Dubai Industrial City
Dubai
United Arab Emirates

Meets the requirements of the Exova BM TRADA Q-Mark International Fire Door Manufacture scheme to STD 096 - Issue 3 - 01/12/2015 which only operates in Bahrain, Egypt, Iraq, Jordan, Kuwait, Lebanon, Libya, Oman, Qatar, Saudi Arabia and The products on the attached schedule

Certificate Number

476

Date of Initial Certification

16 June 2014

Date of last issue

13 October 2017

Date of Expiry

15 June 2020

Exova (UK) Ltd, (T/A Exova BM TRADA), Chilten
Registered Office: Exova (UK) Ltd, Lochend Industrial Est

This certificate remains the property of Exova (UK) Ltd. This certificate
Exova (UK) Ltd or destroyed if requested. Further clarification is
available through

The use of the UKAS accreditation mark indicates accreditation in
Multisite clients - The scope of certification shown



ISO 14001: 2015 (Environmental Management System)

CERTIFICATE OF REGISTRATION

This is to certify that

Sigma Factory for Steel Products

P.O. Box 37991
Saih Suhaib - 3, 4 Round About
Dubai Industrial City
Dubai
United Arab Emirates

has been audited and found to meet the requirements of standard
ISO 14001:2015 Environmental Management System

Scope of certification

Trading and Manufacturing of all kinds of Steel related Construction
Materials



Certificate number: 2524

Issue number: 2018-02

Certificate start date: 22 September 2018

Certificate expiry date: 21 September 2021

Date of initial certification: 22 September 2015

Karen Prendergast

Karen Prendergast
Sector Director - Certification
Exova BM TRADA

Exova (UK) Ltd, (T/A Exova BM TRADA), Chilten House, Stocking Lane, High Wycombe, Buckinghamshire, HP14 4HD, UK
Registered Office: Exova (UK) Ltd, Lochend Industrial Estate, Newbridge, Midlothian EH28 8PL, United Kingdom. Reg No. SC070429.

This certificate remains the property of Exova (UK) Ltd. This certificate and all copies or reproductions of the certificate shall be returned
to Exova (UK) Ltd or destroyed if requested. Further clarification regarding the scope of this certificate and verification of the certificate is
available through Exova BM TRADA or at the above address or at www.exovabmtrada.com

The use of the UKAS accreditation mark indicates accreditation in respect of those activities covered by the accreditation certification 012

OHSAS 18001 : 2018
(Health & Safety Management System)



CERTIFICATE OF REGISTRATION

This is to certify that

Sigma Factory for Steel Products

P.O. Box 37991
Saih Suhaib - 3, 4 Round About
Dubai Industrial City
Dubai
United Arab Emirates

has been audited and found to meet the requirements of standard
OHSAS 18001:2007 Health & Safety Management System

Scope of certification

Trading and Manufacturing of all kinds of Steel related Construction
Materials

Certificate number: 1006

Issue number: 2018-01

Certificate start date: 22 September 2018

Certificate expiry date: 11 March 2021

Date of initial certification: 22 September 2015

Exova (UK) Ltd, (T/A Exova BM TRADA), Chiltern House,
Registered Office: Exova (UK) Ltd, Lochend Industrial Estate, N
This certificate remains the property of Exova (UK) Ltd. This certificate
to Exova (UK) Ltd or destroyed if requested. Further clarification regardi
available through Exov
The use of the UKAS accreditation mark indicates accreditation in respo



ISO 9001 : 2015
(Quality Management System)



CERTIFICATE OF REGISTRATION

This is to certify that

Sigma Factory for Steel Products

P.O. Box 37991
Saih Suhaib - 3, 4 Round About
Dubai Industrial City
Dubai
United Arab Emirates

has been audited and found to meet the requirements of standard
ISO 9001:2015 Quality Management System

Scope of certification

Trading and Manufacturing of all kinds of Steel Related Construction
Materials


Certificate number: 5965

Issue number: 2018-02

Certificate start date: 23 February 2018

Certificate expiry date: 22 February 2021

Date of initial certification: 23 February 2015


Karen Prendergast
Sector Director - Certification
Exova BM TRADA

Exova (UK) Ltd, (T/A Exova BM TRADA), Chiltern House, Stocking Lane, High Wycombe, Buckinghamshire, HP14 4ND, UK
Registered Office: Exova (UK) Ltd, Lochend Industrial Estate, Newbridge, Midlothian EH28 8PL United Kingdom. Reg No. SC070429.
This certificate remains the property of Exova (UK) Ltd. This certificate and all copies or reproductions of the certificate shall be returned
to Exova (UK) Ltd or destroyed if requested. Further clarification regarding the scope of this certificate and verification of the certificate is
available through Exova BM TRADA or at the above address or at www.exovabmtrada.com
The use of the UKAS accreditation mark indicates accreditation in respect of those activities covered by the accreditation certification 012

SFSP CERTIFICATION

BS EN 61537:2007 (KEMA - KEUR Certified For Cable Management Products)

CERTIFICATE

Issued to:
Applicant: Isam Kabbani Trading Est. (Unitech)
Rashidiya
Dubai, United Arab Emirates

Manufacturer/Licensee:
Sigma Factory for Steel Products (SFSP)
Saii Shuaib 3, 4 R/A, Dubai Industrial City,
Dubai, United Arab Emirates

Product : Cable management system
Trade name : SFSP
Types : IE-CT-X-10, IE-CT-X-12, IE-CT-X-15, IE-CT-X-20

The product and any acceptable variation thereto is specified in the Annex to this certificate and the documents therein referred to.

DEKRA hereby declares that the above-mentioned product has been certified on the basis of:
- a type test according to the standard IEC 61537:2007 and EN 61537:2007
- an inspection of the production location according to CENELEC Operational Document CIG 021
- a certification agreement with the number 2156954

DEKRA hereby grants the right to use the KEMA-KEUR certification mark.

The KEMA-KEUR certification mark may be applied to the product as specified in this certificate for the duration of the KEMA-KEUR certification agreement and under the conditions of the KEMA-KEUR certification agreement.

This certificate is issued on: 20 January, 2014 and expires upon withdrawal of one of the above mentioned standards.

Certificate number: 2156954.01

DEKRA Certification B.V.

drs. G.J. Zoetbrood
Managing Director

H.R.M. Barends
Certification Manager

© Integral publication of this certificate is allowed

ACCREDITED BY THE
DUTCH ACCREDITATION
COUNCIL



DEKRA Certification B.V. Meander 1051, 6825 MJ Arnhem P.O. Box 5185, 6802 ED Arnhem The Netherlands
T +31 88 96 83000 F +31 88 96 83100 www.dekra-certification.com Registered Arnhem 09085396

BS EN 61537:2007 (KEMA - KEUR BS Certified For Cable Management Products)

CERTIFICATE

Issued to:
Applicant: Isam Kabbani Trading Est. (Unitech)
Rashidiya
Dubai, United Arab Emirates

Manufacturer/Licensee:
Sigma Factory for Steel Products (SFSP)
Saii Shuaib 3, 4 R/A, Dubai Industrial City,
Dubai, United Arab Emirates

Product : Cable management system
Trade name : SFSP
Types : IE-CT-X-10, IE-CT-X-12, IE-CT-X-15, IE-CT-X-20

The product and any acceptable variation thereto is specified in the Annex to this certificate and the documents therein referred to.

DEKRA hereby declares that the above-mentioned product has been certified on the basis of:
- a type test according to the standard BS EN 61537:2007 based on IEC 61537:2006
- an inspection of the production location according to CENELEC Operational Document CIG 021
- a certification agreement with the number 2156954

DEKRA hereby grants the right to use the KEMA-KEUR BS certification mark.

The KEMA-KEUR BS certification mark may be applied to the product as specified in this certificate for the duration of the KEMA-KEUR BS certification agreement and under the conditions of the KEMA-KEUR BS certification agreement.

This certificate is issued on: 3 February, 2014 and expires upon withdrawal of one of the above mentioned standards.

Certificate number: 2156954.02

DEKRA Certification B.V.

drs. G.J. Zoetbrood
Managing Director

H.R.M. Barends
Certification Manager

© Integral publication of this certificate is allowed

ACCREDITED BY THE
DUTCH ACCREDITATION
COUNCIL



DEKRA Certification B.V. Meander 1051, 6825 MJ Arnhem P.O. Box 5185, 6802 ED Arnhem The Netherlands
T +31 88 96 83000 F +31 88 96 83100 www.dekra-certification.com Registered Arnhem 09085396

UL Certification* (Cable Trays)

CERTIFICATE OF COMPLIANCE

Certificate Number: 20160816-E483358
Report Reference: E483358-20160816
Issue Date: 2016-AUGUST-16

Issued to: Sigma Factory for Steel Products
Saii Shuaib 3, 4 R/A Dubai Industrial City
Opposite DEWA Substation
Dubai UNITED ARAB EMIRATES

This is to certify that
representative samples of CABLE TRAYS
Steel Channel Cable Tray, Ventilated, Heavy Duty (HCT),
Very Heavy Duty (VCT) cable trays.

Have been investigated by UL in accordance with the
Standard(s) indicated on this Certificate.

Standard(s) for Safety: ANSI/NFPA 70, "National Electrical Code" (NEC)
Additional Information: See the ULC Online Certification Directory at www.ulc.ca
for additional information

Only those products bearing the ULC Listing Mark should be considered as being covered by ULC's
Listing and Follow-Up Service.

The ULC Listing Mark generally includes the following elements: the symbol ULC in a circle with
the word "LISTED", a control number (only be alphanumeric) assigned by ULC, and the product
category name (product identifier) as indicated in the appropriate ULC Directory.

To confirm the status, validate the above information via the online directory.

Look for the ULC Listing Mark on the product.

Shahin Kabbani, Director (Manager) Director (Manager)
Director (Manager) Director (Manager) Director (Manager)

Any information and documentation involving UL Mark services are provided on behalf of UL, LLC (UL) or any authorized licensee of UL. For questions, please
contact a local UL Customer Service Representative at www.ul.com/customer-service



UL Certification* (Chute Type Fire Doors)

CERTIFICATE OF COMPLIANCE

Certificate Number: 20170811-R38825
Report Reference: R38825-20170811
Issue Date: 2017-AUGUST-11

Issued to: Sigma Factory for Steel Products
Saii Shuaib 3, 4 R/A Dubai Industrial City
Opposite DEWA Substation
Dubai UNITED ARAB EMIRATES

This is to certify that
representative samples of CHUTE-TYPE FIRE DOORS
Chute-type fire door and frame assembly of the insulated
type, rated up to and including 2 hr, 450°F Temperature
Rise Rating.

Have been investigated by UL in accordance with the
Standard(s) indicated on this Certificate.

Standard(s) for Safety: ANSI/UL 10B, Fire Tests of Door Assemblies
Additional Information: See the UL Online Certifications Directory at
www.ul.com/database for additional information

Only those products bearing the UL Certification Mark should be considered as being covered by UL's
Certification and Follow-Up Service.

Look for the UL Certification Mark on the product.

Shahin Kabbani, Director (Manager) Director (Manager)
Director (Manager) Director (Manager) Director (Manager)

Any information and documentation involving UL Mark services are provided on behalf of UL, LLC (UL) or any authorized licensee of UL. For questions, please
contact a local UL Customer Service Representative at www.ul.com/customer-service



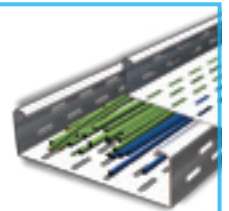


SFSP PRODUCTS

SFSP produces a variety of products ranging from cable management systems; cable trays, cable ladders, basket trays, trunkings and support systems, to mechanical cladding fixations, steel lintels and block work accessories, plasterers' beads, expanded metal and block work reinforcement, strut channel systems, pipe clamps & hangers, gypsum profiles as well as garbage and linen chutes. With the introduction of new machines and the enhancement of production methods, SFSP continues to develop its production methods systematically as well as thoroughly. Its design office in Stuttgart, Germany provides a comprehensive design and calculation case studies, enabling the factory to have the safety factors required for the usage of its products.

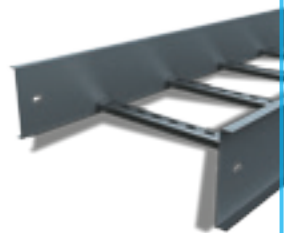
CABLE TRAYS & ACCESSORIES

Cable Trays are designed to meet most requirements of cable and electrical wire installations and comply to local and international standards of fabrications and finishes.



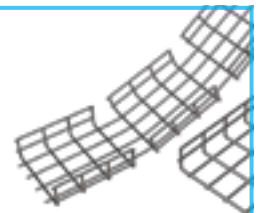
CABLE LADDERS (WELDED & SWAGED)

Cable Ladders of different side heights are available upon request.



BASKET TRAYS & ACCESSORIES

SFSP's Basket Tray systems make connections fast and simple with limited need for tools. Its design allows for continuous airflow, and prevents heating up of cables. SFSP's Basket Tray comes in a full range of sizes and is made with high-strength welded steel wires.



CABLE TRUNKINGS

Cable Trunkings and Accessories are offered in a comprehensive range. Mill galvanized, hot-dip galvanized, and powder coated are the various finishes produced in our factories.



UNDERFLOOR TRUNKING

Underfloor Trunking Systems solutions incorporate a range of products for the distribution of power and data services, it is a coordinated set of containments that protect, segregate, contain, and route cables within a given environment.



CABLE MANAGEMENT SUPPORT SYSTEMS

Cable Support Systems are well designed to provide necessary support for cable trays, cable ladders and trunkings. Cable supports are manufactured according to common standards from high quality raw materials.



C-CHANNEL STRUT SYSTEMS

SFSP's Metal Framing Systems provide an economical solution for electrical, mechanical and industrial supports with a wide variety of applications in the construction industry.

Applications: - Pipe and Conduit Supports - Tunnel Pipe Stanchions - Racks and Shelvings - Wall Framings.



EXPANDED METALS, PLASTERERS' BEADS

Expanded Metals help the formation of joints, protection of corners and resistance against cracks, chips and impact damage.

BLOCK LADDER REINFORCEMENT

SFSP ladder and truss types are used for the reinforcement of brick and block masonry to give improved tensile strength to walls subjected to lateral loading e.g. wind and seismic. SFSP block reinforcements reduces the risk of cracking either at stress concentration around opening.

STEEL LINTELS & BLOCK WORK ACCESSORIES

Steel Lintels provide a combination of strength and light weight, resulting in efficient load bearing performance and increased productivity on site. They are characterized by their ease of installation in addition to time as well as money saving.



PIPE CLAMPS & HANGERS

Pipe Clamps and Hangers from SFSP used in the support of pipes and equipments are manufactured according to the highest standards of fabrication. A diversified choice of Pipe Hangers, Pipe Clamps, EMT Straps, Omega Clamps, Beam Clamps, J and U-Bolts and Threaded Accessories.



MARBLE & GRANITE FIXINGS

Stangle Cladding Fixation includes design, calculation and production of several types of mechanical fixings and accessories used for cladding purposes. Stainless and galvanized steel are among the various materials used in the fabrication.



DRY WALL & CEILING PROFILES

SFSP provides a complete product range for dry wall and ceiling constructions. Studs, Runners, Furring Channels, Ceiling Channels and Wall Angles are among the range of products produced to service the dry wall installers.



GARBAGE & LINEN CHUTES

Chutes from SFSP are very convenient, simple and low cost method of controlling and disposing of refuse and linen. Chutes meet the most stringent requirements of environmental health and safety. Chutes are used as original equipment in new buildings, such as : Hotels, Hospitals, High Rises and Residential Towers.





SFSP Products are solely distributed by UNITECH for Building and Construction Materials

All Products Manufactured by SFSP are Solely Distributed by SFSP Sister Companies in the Following Countries

KSA

Isam Kabbani & Partners for Building and Construction Materials Co., Ltd.

شركة عصام قباني وشركاه لمواد الإنشاء والتعمير المحدودة

BAHRAIN

Isam Kabbani Trading Est.

مؤسسة عصام قباني التجارية

UAE

Issam Kabbani Trading Est.

مؤسسة عصام قباني للتجارة

KUWAIT

Hassan Kabbani for General Contracting Est.

مؤسسة حسان قباني للمقاولات العامة للمباني

OMAN

Isam Kabbani & Partners Trading Co.

شركة عصام قباني وشركاه للتجارة

EGYPT

UNITECH Egypt for Building Materials

شركة يونيتك مصر لمواد البناء

JORDAN

Jordan Build Co. for Building & Construction Materials

شركة بناء الأردن لمواد الإنشاء والتعمير والكهرباء

LEBANON

UNITECH ME s.a.r.l

شركة يونيتك ميدل إيست ش.م.م

SFSP CUSTOMER SERVICE CALL CENTER

KSA

+966 13 8590097, Ext. 3214

UAE

+971 4 8181925, Ext. 4269



IKK

Group of Companies

The IKK Group is a major business institution, serving most of the Arab World in the industrial, construction and trading fields, as well as in specialized maintenance and services.

Today, the IKK Group of Companies is a pioneer in waterproofing, weatherproofing, building material supplies, UPVC and CPVC and high density polyethylene pipes and fittings and several other products for the construction industry.

The Group is also represented in the sanitary products, steel production, kitchen manufacturing, telecommunications, food, decoration, re-insurance and real estate business domain.

Composed of 60 companies, the IKK Group operates through almost 200 divisions, branches and outlets; it is spread over 12 countries, covering all major cities in the region and employing around 13,000 employees.

Our vision is to maintain and improve our leading position as a contractor whose reputation is built on the ability to completely satisfy customers by providing high quality services. As specialists in their respective fields, our teams of professionals are dedicated to a standard of excellence for quality and performance, through continuous development, which will set standards in our industry. We are simply providing solutions for a future of success.

Our mission is to provide our part of the Arab World with local and reliable services in a variety of sectors and products.

To create employment to thousands of personnel and in-house training for hundreds of young Arab graduates in crucial sectors to the benefit of the IKK Group, the graduates themselves and their own communities.

To set a good example of our basic business philosophy: "Hire well, train well, pay well and treat well."

UNITECH

ISAM KABBANI & PARTNERS FOR BUILDING & CONSTRUCTION MATERIALS

Isam Kabbani & Partners for buildings & construction materials co. Ltd (UNITECH) which is part of the IKK group of companies is recognized and acknowledged for the quality and reliability of its products and services as well as for the commitment, professionalism and experience of its employees.

Isam Kabbani & partners for buildings & construction materials co. Ltd (UNITECH) core values are to offer value products and services to its clients, to work closely with them in a lasting business partnership that provides an outstanding performance.

A partnership based on trust, harmony, and a hard to beat services and solutions.

Our Factories have acquired, in addition to ISO 9001:2008 Quality Management System, the ISO 14001:2004 Environmental Management System.

Our care for the environment has been translated via Isam Kabbani & partners for buildings & construction materials co. Ltd (UNITECH)'s membership in the US Green Building Council as a Golden Member.

Our Vision

UNITECH to be the Customer's First Choice.

Our Mission

We have the conviction to be the leader in building & construction industry through:

- Providing Excellence in Services with Passionate and Educated Sales Force
- Strengthen Culture through Unified Sense of Purpose
- Innovative Product Range which is Customer Centric
- Reputable and Quality Service Company
- Attracting, Engaging and Retaining Talent

PIPE CLAMPS & HANGERS

Pipe Clamps and Hangers from SFSP used in the support of pipes and equipment are manufactured according to the highest standards of fabrication. A diversified choice of Pipe Hangers, Pipe Clamps, EMT Straps, Omega Clamps, Beam Clamps, J and U-Bolts and Threaded Accessories.

Calculations are provided by our design office in Stuttgart, Germany.

APPLICABLE STANDARDS

- BS 3974 Specifications for pipe hangers and support
- ASTM F 708 (standard practice for design and installation of rigid pipe hangers)
- Federal Specifications
WW-H-171 E (Hanger and Support)
A-A-1192 A (Bracket, Pipe)
- Manufacturers Standardization Society (MSS)

ANSI/MSS SP-58 Pipe Hangers and Supports

- Materials, Design, Manufacture, Selection, Application, and Installation

MSS SP-69 Pipe Hangers and Support-Selection and Application

MSS SP-77 Guidelines for Pipe Support Contractual Relationships

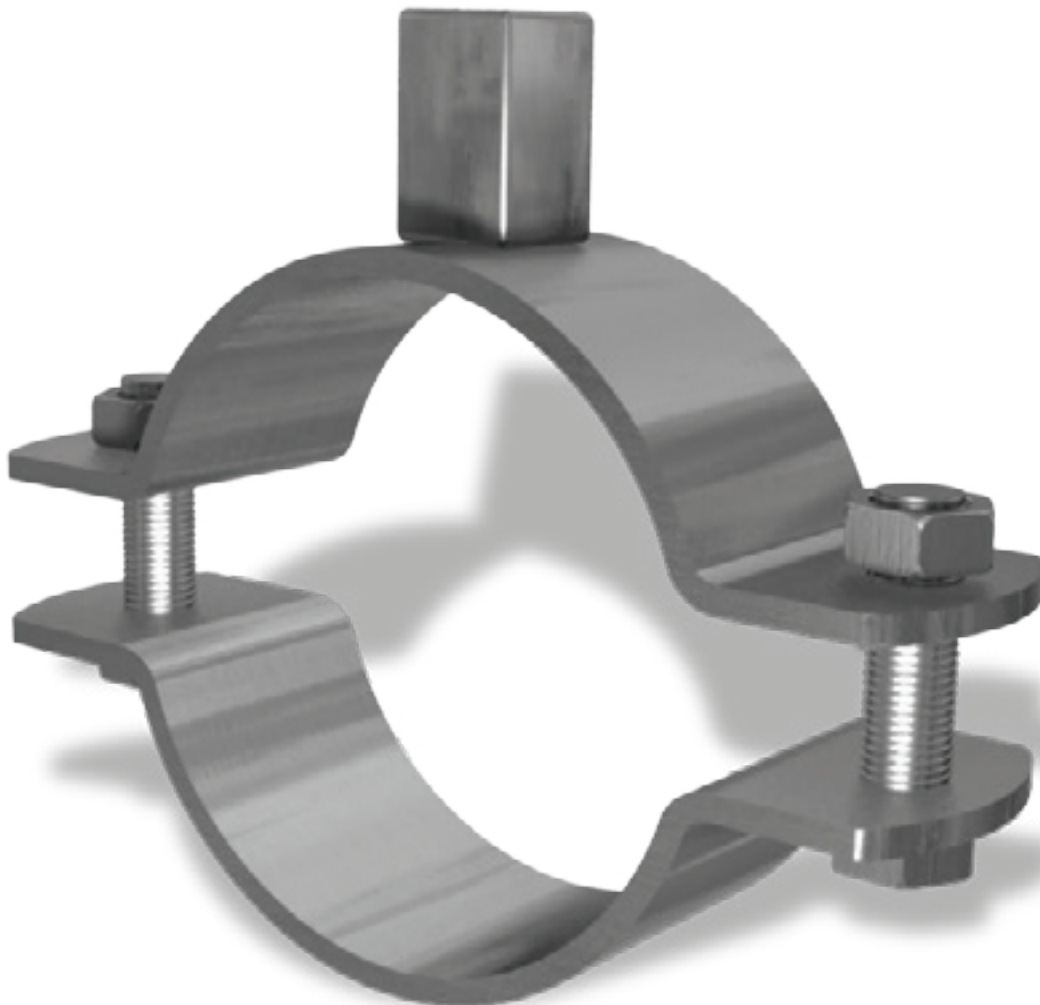
MSS SP-89 Pipe Hangers and Support-Fabrication and Installation Practices

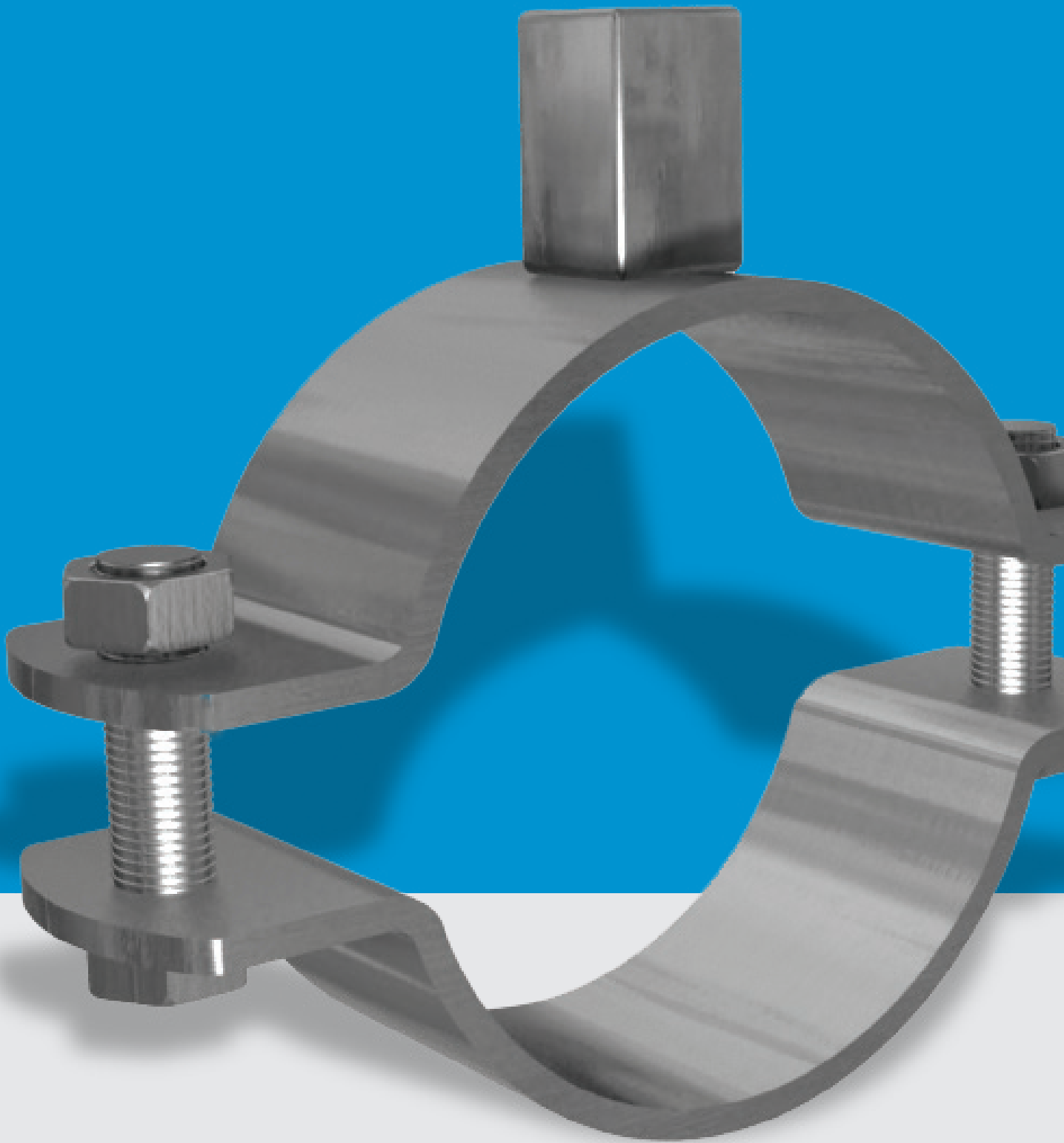
MSS SP-90 Guidelines for Terminology for Pipe Hangers and Support

MSS SP-127 Bracing for Piping Systems Seismic - Wind - Dynamic Design, Selection, Application

Pipe hangers offered in this section are designed to support pipes allowing for vertical adjustment and limited movement in the piping system.

- Material: Carbon Steels are used in the manufacturing of pipe hangers.
- Load Data: The load data published includes a safety factor of 4.0 unless noted (safety factor = ratio of ultimate load to the design load).

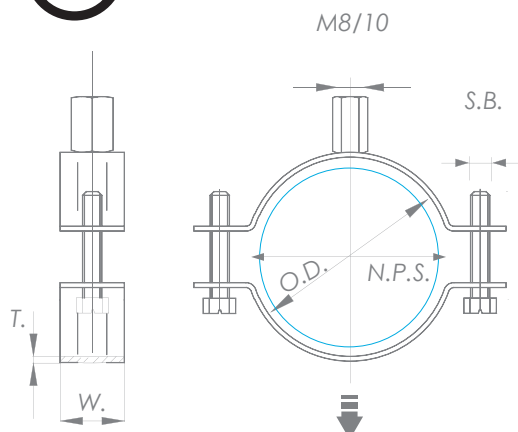
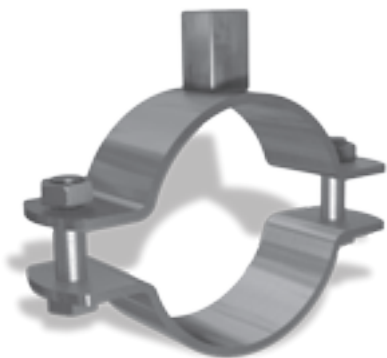




www.sfsp-ikk.com



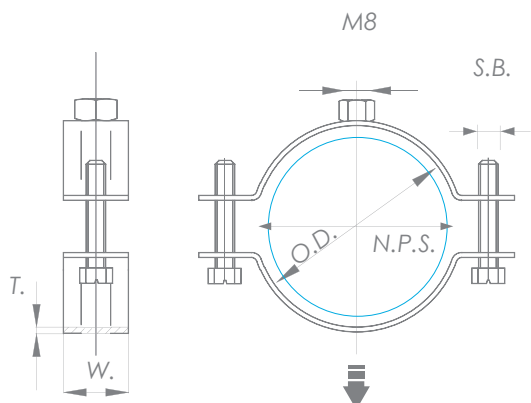
PIPE CLAMPS & HANGERS



Split Pipe Clamp with Long Nut M8/ M10 without rubber gasket

- **Material:** Steel S235
- **Service:** Multifunction screw with hexagonal combination head (slot & crosshead), c/ w retaining washer
- **Finish:** Electro Zinc Plated
- **Applications:**
 - Fresh water distribution pipes
 - Waste water distribution pipes
 - Gas distribution pipes
 - Heating pipes
 - Industrial pipe fitting
 - Mechanical installation
 - Process and control lines

Part No.	Nominal Pipe Size		Outside Diameter	Side Bolt	Thickness & Width	Load Capacity
	In	mm	mm	mm	mm	KN
PC-0010-C-HSPC0500810	1/2	15	20-25	M6x20	2.0x20	1.30
PC-0015-C-HSPC0750810	3/4	20	26-30	M6x20	2.0x20	1.30
PC-0020-C-HSPC1000810	1	25	32-36	M6x20	2.0x20	1.30
PC-0025-C-HSPC1250810	5/4	32	38-45	M6x20	2.0x20	1.30
PC-0030-C-HSPC1500810	3/2	40	47-51	M6x20	2.0x20	1.30
PC-0035-C-HSPC2000810	2	50	60-64	M6x20	2.0x20	1.30
PC-0040-C-HSPC2500810	5/2	65	74-80	M6x20	2.5x20	1.90
PC-0045-C-HSPC3000810	3	80	87-92	M6x20	2.5x20	1.90
PC-0150-C-HSPC4000810	4	100	113-118	M6x20	2.5x20	1.90
PC-0155-C-HSPC5000810	5	125	138-142	M6x20	2.5x20	1.90
PC-0160-C-HSPC6000810	6	150	159-166	M6x30	2.5x20	1.90



Split Pipe Clamp with Standard Nut M8 without rubber gasket

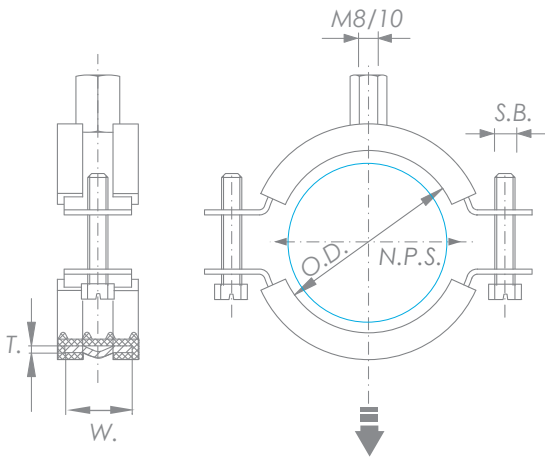
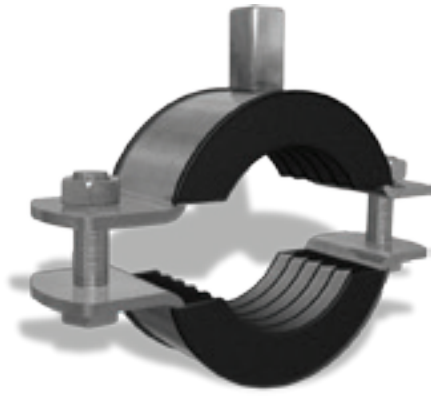
- **Material:** Steel S235
- **Service:** Economy option
- **Finish:** Electro Zinc Plated
- **Applications:**
 - Unassembled in plastic bags per 2 sets
 - M6 screw with cross head

Part No.	Nominal Pipe Size		Outside Diameter	Side Bolt	Thickness & Width	Load Capacity
	In	mm	mm	mm	mm	KN
PC-0110-C-SPC05008	1/2	15	20-25	M6x20	2.0x20	1.30
PC-0115-C-SPC07508	3/4	20	26-30	M6x20	2.0x20	1.30
PC-0120-C-SPC10008	1	25	32-36	M6x20	2.0x20	1.30
PC-0125-C-SPC12508	5/4	32	38-45	M6x20	2.0x20	1.30
PC-0130-C-SPC15008	3/2	40	47-51	M6x20	2.0x20	1.30
PC-0135-C-SPC20008	2	50	60-64	M6x20	2.0x20	1.30
PC-0140-C-SPC25008	5/2	65	74-80	M6x20	2.5x20	1.90
PC-0145-C-SPC30008	3	80	87-92	M6x20	2.5x20	1.90
PC-0150-C-SPC40008	4	100	113-118	M6x20	2.5x20	1.90
PC-0155-C-SPC50008	5	125	138-142	M6x20	2.5x20	1.90
PC-0160-C-SPC60008	6	150	159-166	M6x20	2.5x20	1.90

NPS: Nominal Pipe Size - OD: Outside Diameter - SB: Side Bolt - T-W: Thickness - Width

Split Pipe Clamp with Rubber with Long Nut M8/ M10

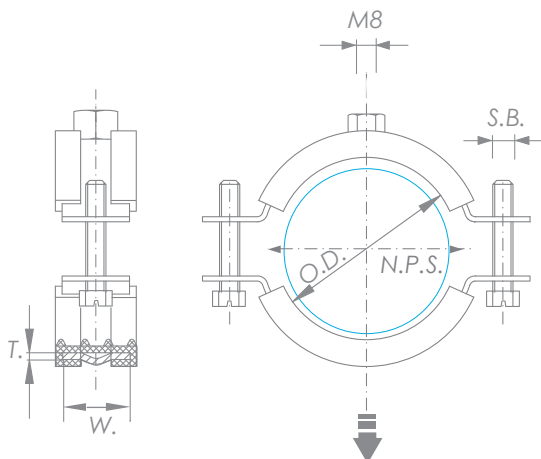
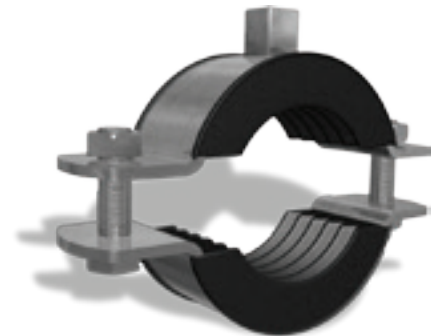
- **Material:** Steel S235
- **Service:** EPDM rubber insulation for sound reduction compliant with DIN 4109
- **Finish:** Electro Zinc Plated



Part No.	Nominal Pipe Size		Outside Diameter	Side Bolt	Thickness & Width	Load Capacity
	In	mm	mm	mm	mm	KN
PC-0210-C-HSPCR0500810	1/2	15	20-25	M6x20	2.0x20	1.30
PC-0215-C-HSPCR0750810	3/4	20	26-30	M6x20	2.0x20	1.30
PC-0220-C-HSPCR1000810	1	25	32-36	M6x20	2.0x20	1.30
PC-0225-C-HSPCR1250810	5/4	32	38-45	M6x20	2.0x20	1.30
PC-0230-C-HSPCR1500810	3/2	40	47-51	M6x20	2.0x20	1.30
PC-0235-C-HSPCR2000810	2	50	60-64	M6x20	2.0x20	1.30
PC-0240-C-HSPCR2500810	5/2	65	74-80	M6x20	2.5x20	1.90
PC-0245-C-HSPCR3000810	3	80	87-92	M6x20	2.5x20	1.90
PC-0250-C-HSPCR4000810	4	100	113-118	M6x20	2.5x20	1.90
PC-0255-C-HSPCR5000810	5	125	138-142	M6x20	2.5x20	1.90
PC-0260-C-HSPCR6000810	6	150	159-166	M6x30	2.5x20	1.90

Split Pipe Clamp with Rubber with Standard Nut M8

- **Material:** Steel S235
- **Service:** EPDM rubber insulation for sound reduction compliant with DIN 4109
- **Finish:** Electro Zinc Plated



Part No.	Nominal Pipe Size		Outside Diameter	Side Bolt	Thickness & Width	Load Capacity
	In	mm	mm	mm	mm	KN
PC-0310-C-SPCR05008	1/2	15	20-25	M6x20	2.0x20	1.30
PC-0315-C-SPCR07508	3/4	20	26-30	M6x20	2.0x20	1.30
PC-0320-C-SPCR10008	1	25	32-36	M6x20	2.0x20	1.30
PC-0325-C-SPCR12508	5/4	32	38-45	M6x20	2.0x20	1.30
PC-0330-C-SPCR15008	3/2	40	47-51	M6x20	2.0x20	1.30
PC-0335-C-SPCR20008	2	50	60-64	M6x20	2.0x20	1.30
PC-0340-C-SPCR25008	5/2	65	74-80	M6x20	2.5x20	1.90
PC-0345-C-SPCR30008	3	80	87-92	M6x20	2.5x20	1.90
PC-0350-C-SPCR40008	4	100	113-118	M6x20	2.5x20	1.90
PC-0355-C-SPCR50008	5	125	138-142	M6x20	2.5x20	1.90
PC-0360-C-SPCR60008	6	150	159-166	M6x20	2.5x20	1.90

NPS: Nominal Pipe Size - OD: Outside Diameter - SB: Side Bolt -
T-W: Thickness - Width

Omega Conduit & Pipe Clamp

- **Material:** Steel S235
- **Service:** Designed for hanging conduit (rigid or EMT) to beam clamps, available with or without closure bolt
- **Finish:** Electro Zinc Plated



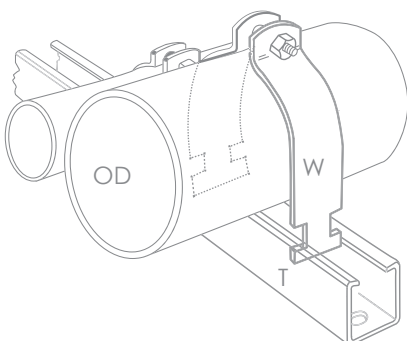
Part No.	Nominal Pipe Size		Outside Diameter	Side Bolt	Thickness & Width	Load Capacity
	In	mm	mm	mm	mm	KN
PC-0410-C-OMCPC050	1/2	15	20-25	M6x20	2.0x20	1.30
PC-0415-C-OMCPC075	3/4	20	26-30	M6x20	2.0x20	1.30
PC-0420-C-OMCPC100	1	25	32-36	M6x20	2.0x20	1.30
PC-0425-C-OMCPC125	5/4	32	38-45	M6x20	2.0x20	1.30
PC-0430-C-OMCPC150	3/2	40	47-51	M6x20	2.0x20	1.30
PC-0435-C-OMCPC200	2	50	60-64	M6x20	2.0x20	1.30
PC-0440-C-OMCPC250	5/2	65	74-80	M6x20	2.5x20	1.90
PC-0445-C-OMCPC300	3	80	87-92	M6x20	2.5x20	1.90
PC-0450-C-OMCPC400	4	100	113-118	M6x20	2.5x20	1.90
PC-0455-C-OMCPC500	5	125	138-142	M6x20	2.5x20	1.90
PC-0460-C-OMCPC600	6	150	159-166	M6x20	2.5x20	1.90

Channel Clamp

- **Material:** Steel S235
- **Service:** For mounting (rigid or EMT) and steel pipes on C-Channels
- **Finish:** Electro Zinc Plated or Hot-dip Galvanized



Pipe Straps for thin metallic wall conduits (EMT)
(Electrical Metallic Tubing)



Part No.	Nominal Pipe Size		Outside Diameter		Thickness & Width	Load Capacity
	In	mm	EMT	Rigid	mm	KN
PC-0510-C-CHC050	1/2	15	20	25	1.5x28	1.30
PC-0515-C-CHC075	3/4	20	26	30	1.5x28	1.30
PC-0520-C-CHC100	1	25	32	40	2.0x28	1.30
PC-0525-C-CHC100	5/4	32	42	45	2.0x28	1.30
PC-0530-C-CHC150	3/2	40	46	50	2.5x28	1.30
PC-0535-C-CHC200	2	50	60	64	2.5x28	1.30
PC-0540-C-CHC250	5/2	65	74	80	2.5x28	1.90
PC-0545-C-CHC300	3	80	86	92	2.8x28	1.90
PC-0550-C-CHC400	4	100	112	118	3.0x28	1.90
PC-0555-C-CHC500	5	125	138	142	3.0x28	1.90
PC-0560-C-CHC600	6	150	160	165	3.0x28	1.90

NPS: Nominal Pipe Size - OD: Outside Diameter - CB: Closure Bolt - T-W: Thickness - Width

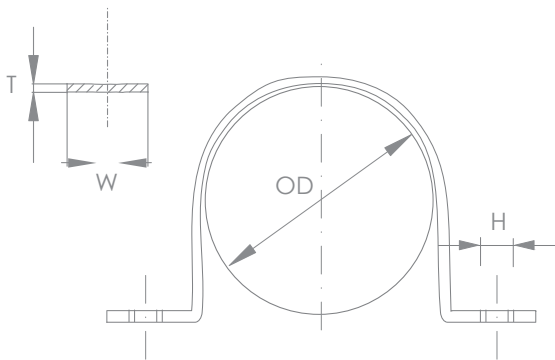
Pipe Strap

Two-Hole Pipe Strap/ U-Clip

- **Material:** Steel S235
- **Service:** Designed for supporting pipe runs on walls and on C-Channels
- **Finish:** Electro Zinc Plated



Part No.	Nominal Pipe Size		Outside Diameter	Thickness & Width	Hole Size	Load Capacity
	In	mm	mm	mm	mm	KN
PC-0510-C-PSUC050	1/2	15	22	1.5x25	6	1.30
PC-0515-C-PSUC075	3/4	20	28	1.5x25	6	1.30
PC-0520-C-PSUC100	1	25	35	1.5x25	6	1.30
PC-0525-C-PSUC150	5/4	32	42	1.5x25	6	1.30
PC-0530-C-PSUC200	3/2	40	54	1.5x25	6	1.30
PC-0535-C-PSUC250	2	50	60	2.0x30	8	1.90
PC-0540-C-PSUC300	5/2	65	75	2.0x30	8	1.90
PC-0545-C-PSUC350	3	80	90	2.0x40	8	1.90

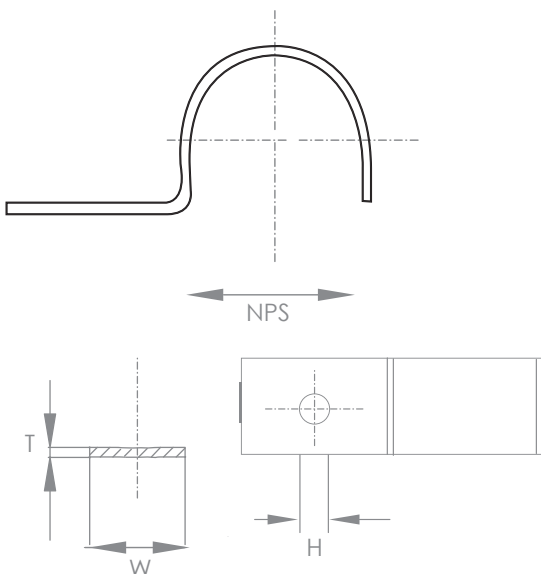


One-Hole Pipe Strap <Snap Type>

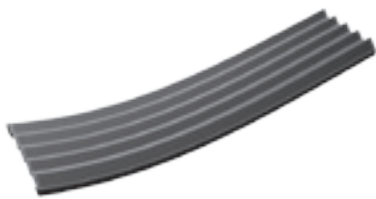
- **Material:** Steel S235
 - **Service:** Designed for supporting standard conduits, cable and steel pipes on walls or sides of beams or on C-Channels
 - **Finish:** Electro Zinc Plated
- Not recommended for use horizontally on ceilings, bottoms of beams and similar installations since the factor of safety is greatly reduced when so used



Part No.	Nominal Pipe Size		Thickness & Width	Hole Size	Load Capacity
	In	mm	mm	mm	KN
PC-0610-C-PSST050	1/2	15	1.0x25	6	0.40
PC-0615-C-PSST075	3/4	20	1.0x25	6	0.40
PC-0620-C-PSST100	1	25	1.0x25	6	0.40
PC-0625-C-PSST150	5/4	32	1.5x25	6	0.40
PC-0630-C-PSST200	3/2	40	1.5x25	6	0.40
PC-0635-C-PSST250	2	50	1.5x25	8	0.40
PC-0640-C-PSST300	5/2	65	2.0x25	8	0.45
PC-0645-C-PSST350	3	80	2.5x25	8	0.45



NPS: Nominal Pipe Size - OD: Outside Diameter - T-W: Thickness - Width
H: Hole Size

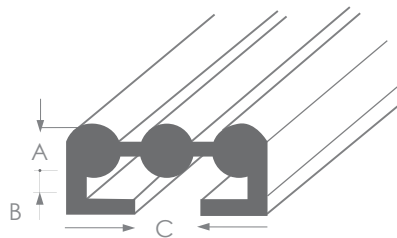


Rubber DIN 4109

Noise Suppression Profile

SR noise-suppression strip for insertion in clamps and hangers

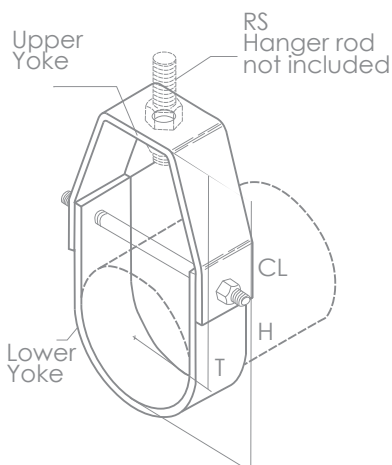
- **Material:** EPDM. Rubber
- **Load Data:** At normal frequency and pressure range, noise suppression 20 dB(A) & the temperature-resistant from -40 °C to + 100 °C
- **Electrical values:** Specific resistance: 2×10^9 M ohm cm^2 & the Surface resistance: 2×10^9 M ohm



Part No.	Size mm	Dimension		
		A mm	B mm	C mm
PC-0005-C-RNS	20x6	6	3	20

Clevis Hanger

- **Material:** Steel S235
- **Finish:** Electro Zinc Plated or Hot-dip Galvanized
- **Application:** Designed for suspending pipes

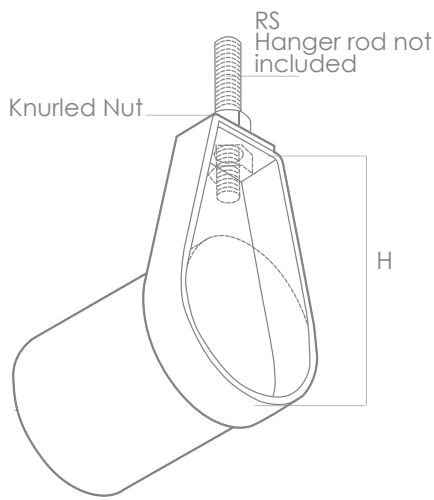


Part No.	Nominal Pipe Size		Rod Size	Center Line	Height	Transverse	Thickness & Width	Load Capacity
	In	mm	mm	mm	mm	mm	mm	KN
PC-0710-C-CLH050	1/2	15	M10	44	55	6	3x25	2.70
PC-0715-C-CLH075	3/4	20	M10	54	68	6	3x25	2.70
PC-0720-C-CLH100	1	25	M10	58	75	6	3x25	2.70
PC-0725-C-CLH100	5/4	32	M10	80	100	6	3x25	2.70
PC-0730-C-CLH150	3/2	40	M10	81	106	6	3x25	2.70
PC-0735-C-CLH200	2	50	M10	86	117	6	3x25	2.70
PC-0740-C-CLH250	5/2	65	M12	106	144	8	3x30	5.00
PC-0745-C-CLH300	3	80	M12	127	172	8	3x30	5.00
PC-0750-C-CLH400	4	100	M16	141	199	10	4x30	6.30
PC-0755-C-CLH500	5	125	M16	159	229	10	4x30	6.30
PC-0760-C-CLH600	6	150	M20	174	257	12	4x40	8.50

CL: Center Line - H: Height - T: Transverse



Swivel Hangers with rubber gaskets can be supplied also.



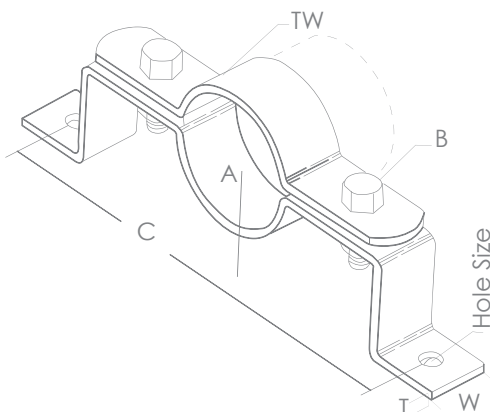
Adjustable Band Hanger

- **Material:** Steel S235
- **Finish:** Electro Zinc Plated or Hot-dip Galvanized
- **Application:** Designed for suspending non-insulated stationary pipe line. Knurled nut can be supplied in 8 to 10 mm diameter

	Nominal Pipe Size		Rod Size	Height	Thickness & Width	Load Capacity
Part No.	In	mm	mm	mm	mm	KN
PC-0810-C-ADBH05008	1/2	15	M8	54	1.0x25	0.30
PC-0815-C-ADBH07508	3/4	20	M8	64	1.0x25	0.30
PC-0820-C-ADBH10008	1	25	M8	72	1.2x25	0.30
PC-0825-C-ADBH12508	5/4	32	M8	83	1.2x25	0.30
PC-0830-C-ADBH15008	3/2	40	M8	96	1.2x25	0.30
PC-0835-C-ADBH20008	2	50	M8	113	1.2x25	0.30
PC-0840-C-ADBH25010	5/2	65	M10	130	1.2x25	0.60
PC-0845-C-ADBH30010	3	80	M10	156	1.2x25	0.60
PC-0850-C-ADBH40010	4	100	M10	215	1.2x25	0.60
PC-0855-C-ADBH50010	5	125	M10	242	2.0x25	1.10
PC-0860-C-ADBH60010	6	150	M10	279	2.0x25	1.10

Offset Pipe Clamp

- **Material:** Steel S235
- **Service:** Designed for supporting and stabilizing vertical pipe runs
- **Finish:** Electro Zinc Plated or Hot-dip Galvanized



	Nominal Pipe Size		A	B	C	Hole Size	Thickness & Width	Load Capacity
Part No.	In	mm	mm	mm	mm	mm	mm	KN
PC-0910-C-OFFP050	1/2	15	60	8x40	150	10	3x30	0.90
PC-0915-C-OFFP075	3/4	20	60	8x40	175	10	3x30	0.90
PC-0920-C-OFFP100	1	25	65	8x40	190	10	3x30	0.90
PC-0925-C-OFFP125	5/4	32	75	8x40	200	10	3x30	0.90
PC-0930-C-OFFP200	2	50	80	10x50	225	12	4.5x30	1.20
PC-0935-C-OFFP250	5/2	65	85	10x50	250	12	4.5x30	1.20
PC-0940-C-OFFP300	3	80	95	10x50	275	12	4.5x30	1.20
PC-0945-C-OFFP400	4	100	105	12x50	300	14	5x40	1.80
PC-0950-C-OFFP600	6	150	130	12x50	400	14	5x40	1.80
PC-0955-C-OFFP800	8	200	160	12x50	450	14	5x40	1.80

T-W: Thickness - Width



Beam Clamps

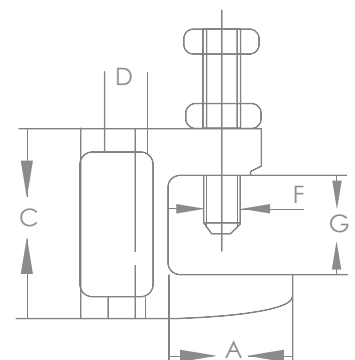
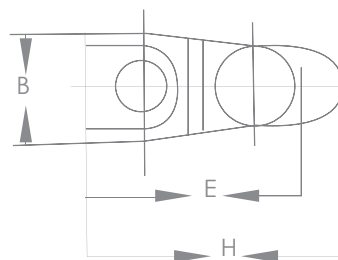
Beam Clamps offered in this section are designed to provide attachment of hanger rods to structures without drilling or welding. A wide range of types and sizes are available for various applications.



C-Clamp

- **Material:** Malleable Cast Iron Zinc plated

Casting tolerance according to DIN 1684 GTA/17 with hexagon head screw DIN 933 8.8, threaded end with cup point according to EN ISO 4753 and locknut DIN 439 for sprinkler systems, heating, ventilation and air conditioning, acoustic tubes and sanitary installation machines and steel constructions. Safety Factor



Part No.	A	B	C	D	E	F	G	H	Load Capacity
mm	mm	mm	mm	mm	mm	mm	mm	mm	KN
PC-1105-C-MCC06	20	19	35	M6 Ø7	35	M8	17	36	1.1
PC-1110-C-MCC08	21	19	35	M8 Ø9	35	M8	18	38	1.2
PC-1115-C-MCC08	29	21	45	M8 Ø9	41	M10	23	50	2.5
PC-1120-C-MCC10	23	21	42	M10 Ø11	41	M10	20	44	2.5
PC-1125-C-MCC12	35	23.5	54	M12 Ø13	48	M10	26	58	3.5
PC-1130-C-MCC16	30	29.5	58	M16 Ø17	55.5	M12	28	58.3	5.5

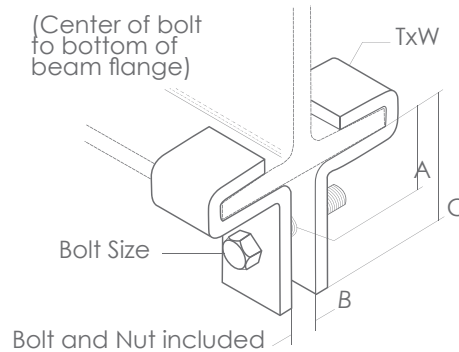
The Load Data the Load data includes a safety factor of 4, (safety factor = ratio of ultimate load divided to the design Load : Safety factor 4:1)



Part No. **PC-1160-C-SBCO0530**

Steel Beam Clamp Open

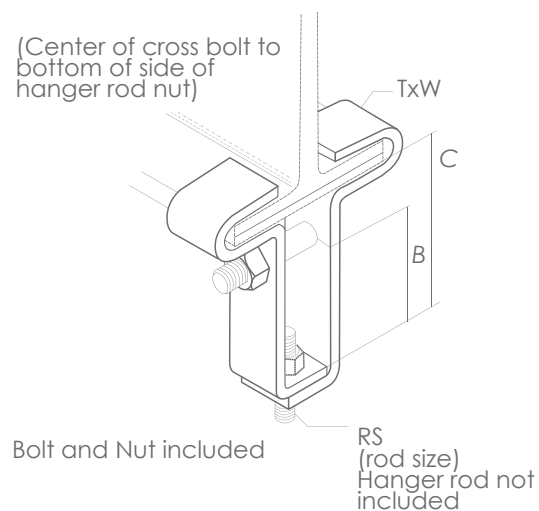
- **Material:** Steel S235
- **Service:** Designed for attaching hanger rods to the top or bottom flange of a beam
- **Finish:** Hot-dip Galvanized
- **Ordering:** Specify flange width and thickness
- **Steel Size:** 5X30 mm



Part No. **PC-1170-C-SBCC0530**

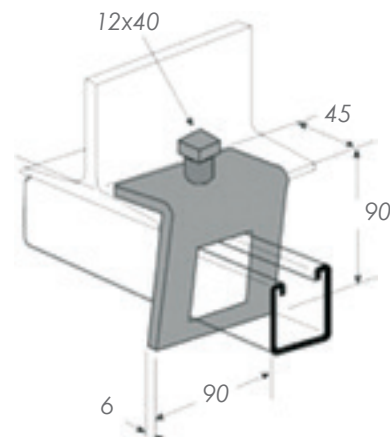
Steel Beam Clamp Closed

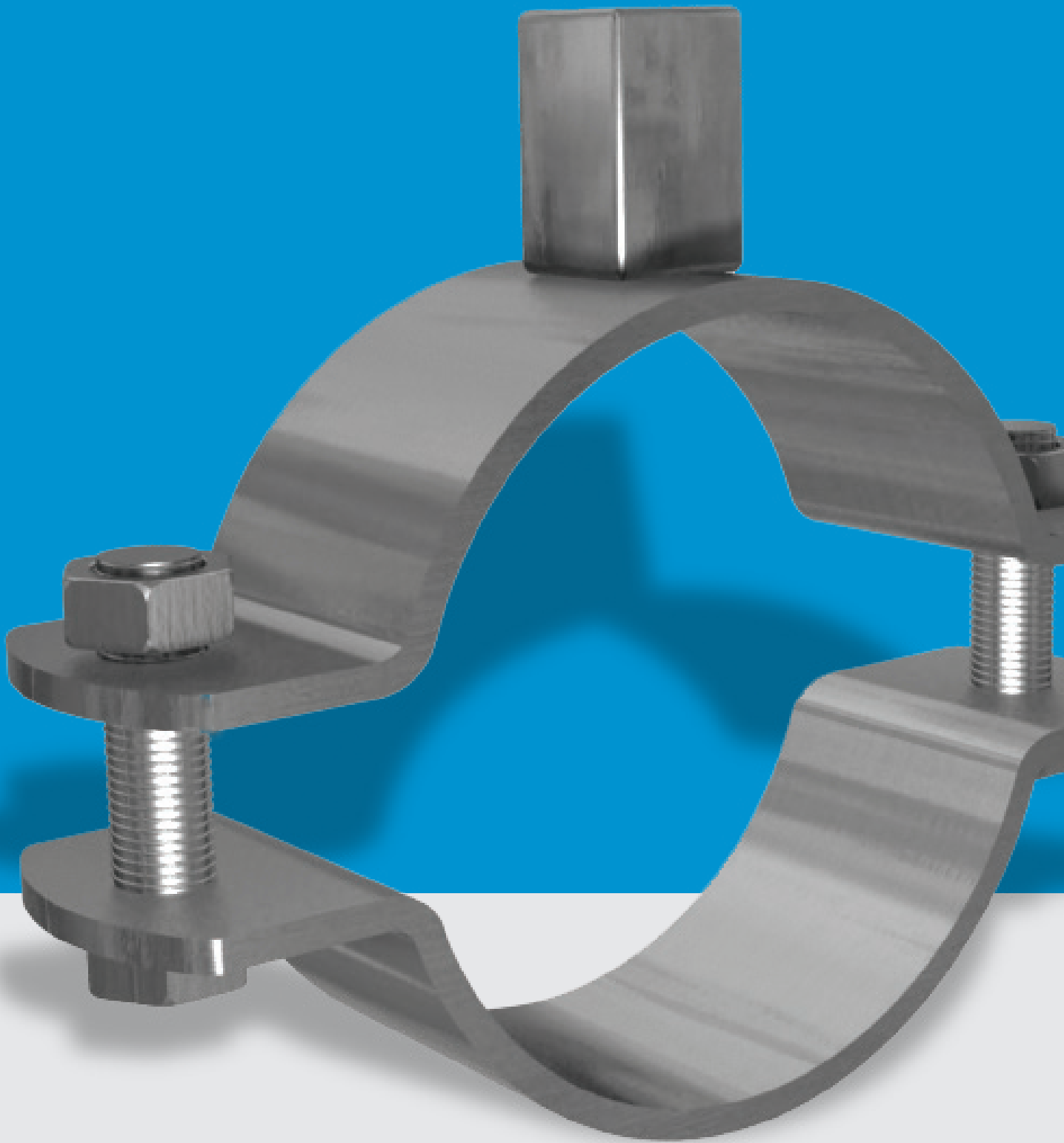
- **Material:** Steel S235
- **Service:** Designed for attaching hanger rods to the top or bottom flange of a beam
- **Finish:** Hot-dip Galvanized
- **Ordering:** Specify flange width and thickness
- **Steel Size:** 5X30 mm, 5X40 mm



Window Beam Clamp

- **Material:** Steel S235
- **Service:** Designed for attaching C-Channel to a top or bottom flange of a beam
- **Finish:** Electro Zinc Plated
- **Steel Size:** 6x90 mm





www.sfsp-ikk.com



SUPPORT SYSTEM

GENERAL INFORMATION

CHANNEL

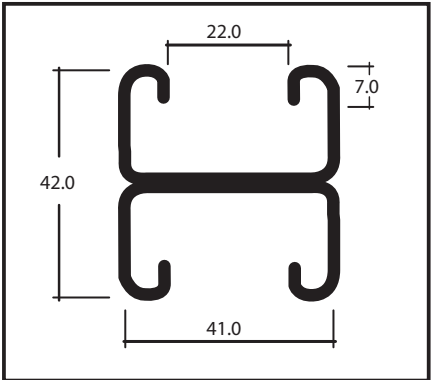
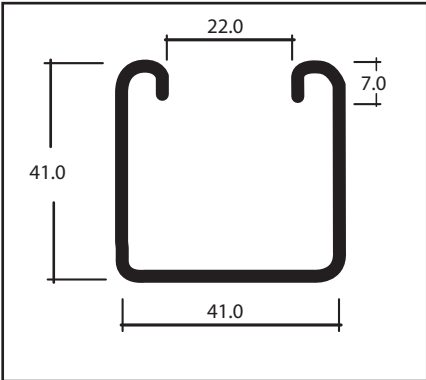
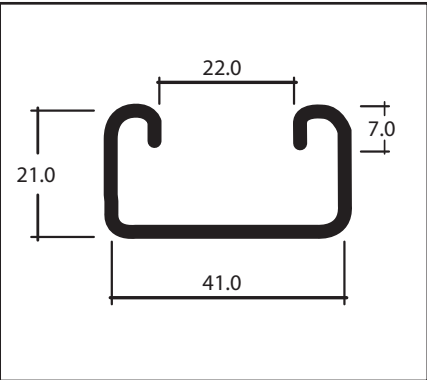
SFSP's metal framing channel is cold formed on modern rolling machines from low carbon steel manufactured according to BS 6946:1988. A continuous slot provides the ability to make attachments at any point.

LENGTHS

Standard length: 3000mm with ± 3.2 mm length tolerance.
Custom lengths are available upon request.

FINISHES

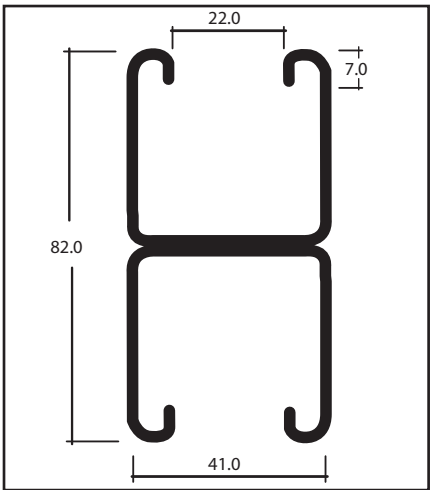
Standard Finishes: Pre-Galvanized finish (ASTM A653M coating G90 and G60). Hot Dip Galvanized after fabrication (ASTM A123 or BSEN ISO1461:2009) . Other custom coatings are available upon request.



Metal Framing Channels

SELECTION CHART

Part No	Channel Dimensions		Thickness
	Height "H"	Width "W"	
CCH - 220/221	21.0 mm	41.0 mm	1.5 mm
CCH - 240/241	41.0 mm	41.0 mm	1.5 mm
CCH - 320/321	21.0 mm	41.0 mm	2.0 mm
CCH - 340/341	41.0 mm	41.0 mm	2.0 mm
CCH - 420/421	21.0 mm	41.0 mm	2.5 mm
CCH - 440/441	41.0 mm	41.0 mm	2.5 mm



For Toothed Channel add "T" after the Part no. ex.: CCH-220T

CCH 320

3

2

0

T

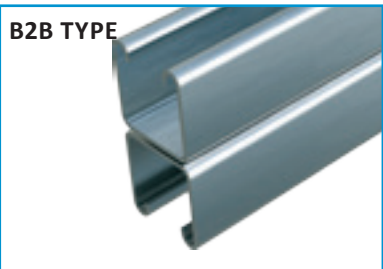
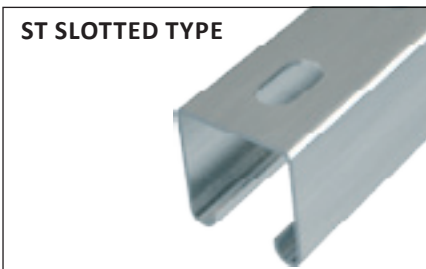
Material Thickness
for 1.5 mm 2
for 2.0 mm 3
for 2.5 mm 4

Size
mm 21/41 - 2
mm 41/41 - 4

Channel Patterns
PT - 0
ST - 1
B2B - 2

Toothed channel

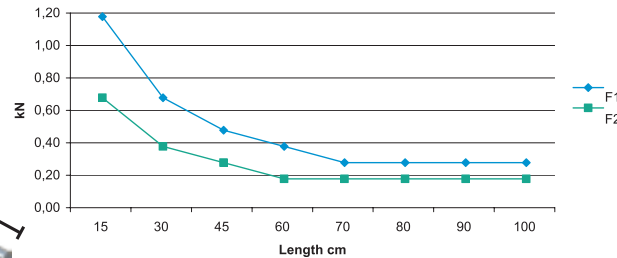
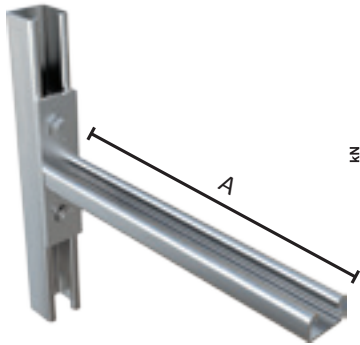
Channel Hole Patterns



CANTILEVER ARM BRACKET

Cantilever Arm Brackets - SCA

CCH421 41x21x2.5

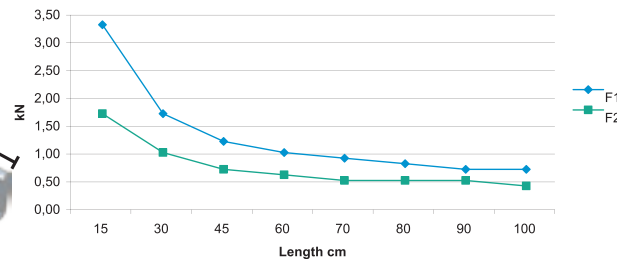
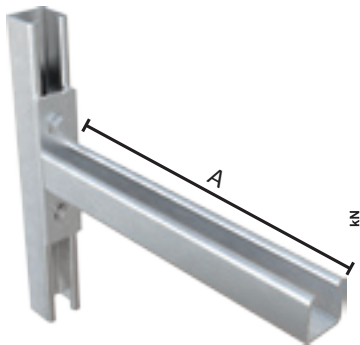


Length A (mm)	Allowable Load		
	F ₁ *	F ₂ *	F _z **
150	1.10	0.60	3.10
300	0.60	0.30	3.10
450	0.40	0.20	3.10
600	0.30	0.10	3.10
700	0.20	0.10	3.10
800	0.20	0.10	3.10
900	0.20	0.10	3.10
1000	0.20	0.10	3.10

Base plate : height (h) x width (b) x thickness (t)
100 50 8

- In the case of concrete support frame, use anchor M10
- In the case of concrete C-Channel frame, Hex bolt M8 .

** **Connection force (pull-out force) : 3.10 (kN)**



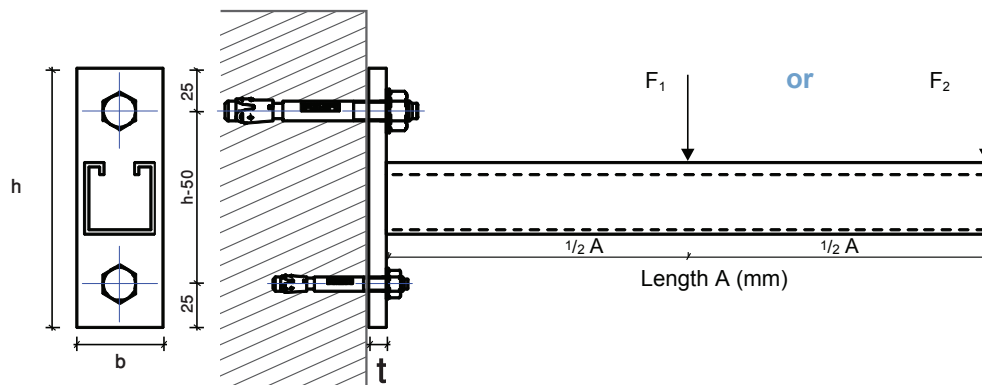
Length A (mm)	Allowable Load		
	F ₁ *	F ₂ *	F _z **
150	3.10	1.50	7.50
300	1.50	0.80	7.50
450	1.00	0.50	7.50
600	0.80	0.40	7.50
700	0.70	0.30	7.50
800	0.60	0.30	7.50
900	0.50	0.30	7.50
1000	0.50	0.20	7.50

Base plate : height (h) x width (b) x thickness (t)
140 50 10

- In the case of concrete support frame, use anchor M16 .
- In the case of concrete C-Channel frame, Hex bolt M8.

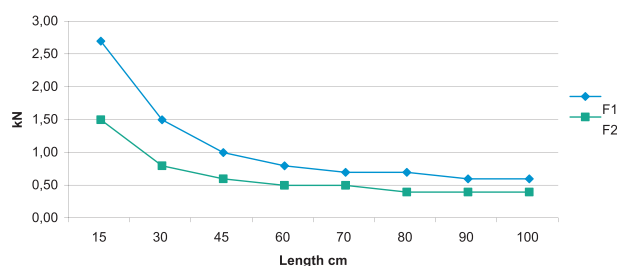
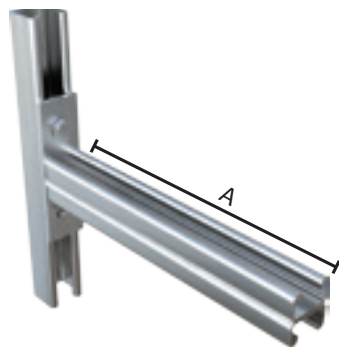
** **Connection force (pull-out force) : 7.50 (kN)**

* Given Loads are always in [kN] " Allowable characteristic live load "



Cantilever Arm Brackets - SCA

CCH422 41x21x2.5 B2B



Length A (mm)	Allowable Load		
	F ₁ *	F ₂ *	F _z **
150	2.50	1.30	4.80
300	1.30	0.60	4.80
450	0.80	0.40	4.80
600	0.60	0.30	4.80
700	0.50	0.30	4.80
800	0.50	0.20	4.80
900	0.40	0.20	4.80
1000	0.40	0.20	4.80

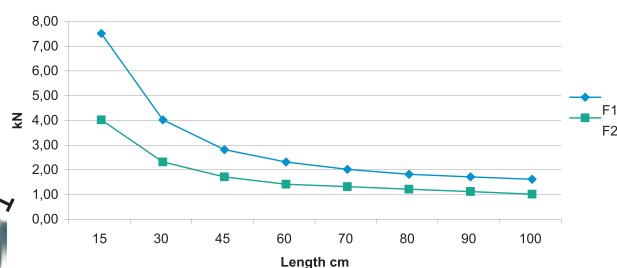
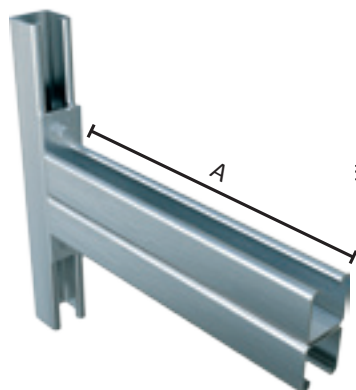
Base plate : height (h) x width (b) x thickness (t)

140 50 10

- In the case of concrete support frame, use anchor M12.
- In the case of concrete C-Channel frame, Hexbolt M8.

** Connection force (pull-out force) : 4,8 (kN)

CCH442 41x41x2.5 B2B



Length A (mm)	Allowable Load		
	F ₁ *	F ₂ *	F _z **
150	7.00	3.50	8.30
300	3.50	1.80	8.30
450	2.30	1.20	8.30
600	1.80	0.90	8.30
700	1.50	0.80	8.30
800	1.30	0.70	8.30
900	1.20	0.60	8.30
1000	1.10	0.50	8.30

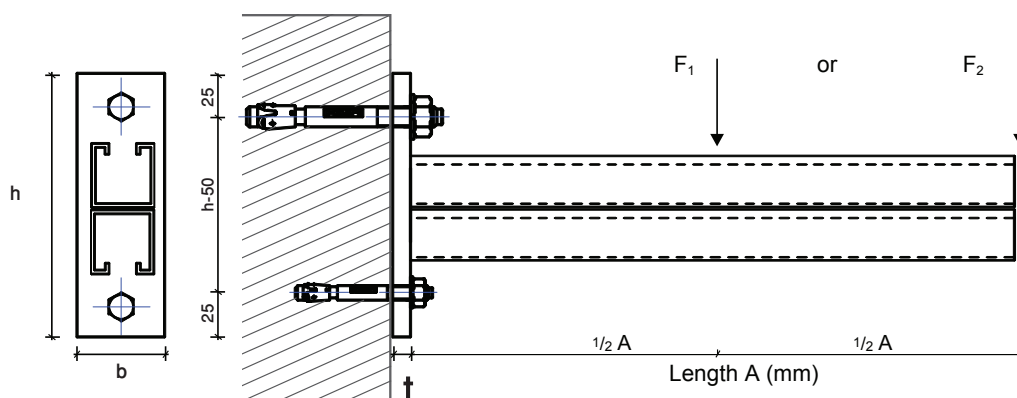
Base plate : height (h) x width (b) x thickness (t)

180 60 12

- In the case of concrete support frame, use anchor M16.
- In the case of concrete C-Channel frame, Hex bolt M10 .

** Connection force (pull-out force) : 8,30 (kN)

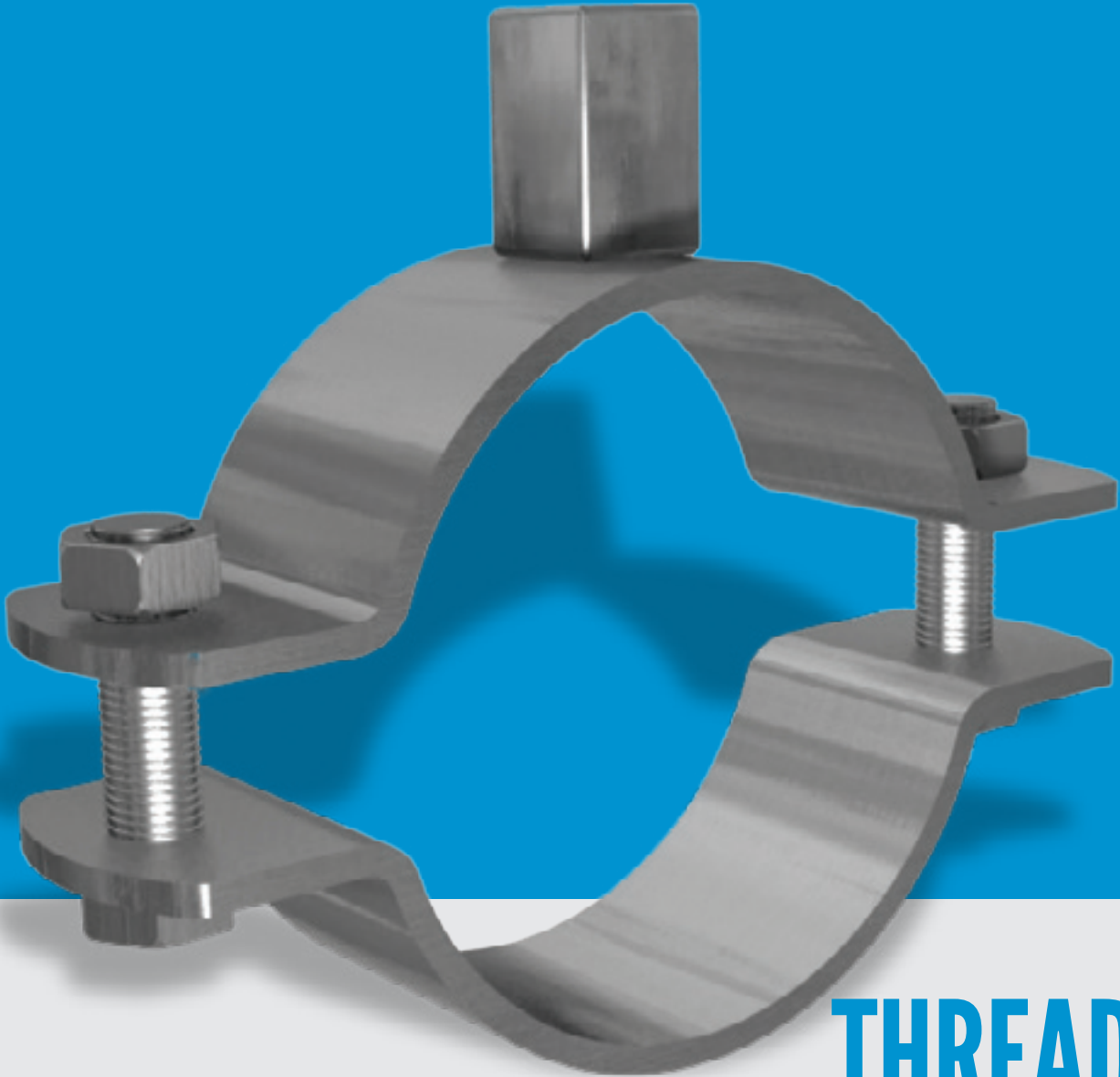
* Given Loads are always in [kN] " Allowable characteristic live load "



Accessories offered in this section are designed to reduce installation time.
- **Material:** For maximum loading design, carbon steel is used in the manufacturing of threaded accessories. Stainless steel and other material are available.

- **Finish:** Standard finishes are plain steel and Electro Plated zinc (ASTM B633 SCl)
(BS 1706)

- **Load Data:** The load data published includes a safety of 5.0 unless noted (safety factor = ratio of ultimate load to the design load) .



THREADED ACCESSORIES

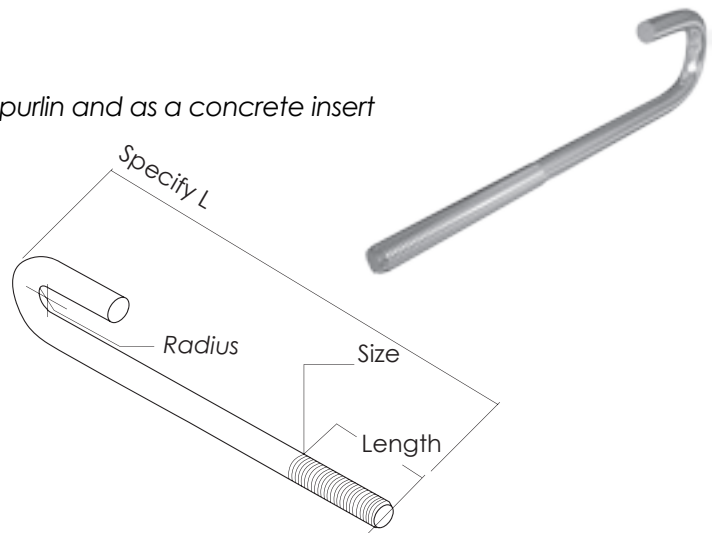


Anchor Bolts

J - Bolt

- **Material:** Steel S235
- **Service:** Designed for attaching to beam flange or purlin and as a concrete insert
- **Finish:** Electro Zinc Plated

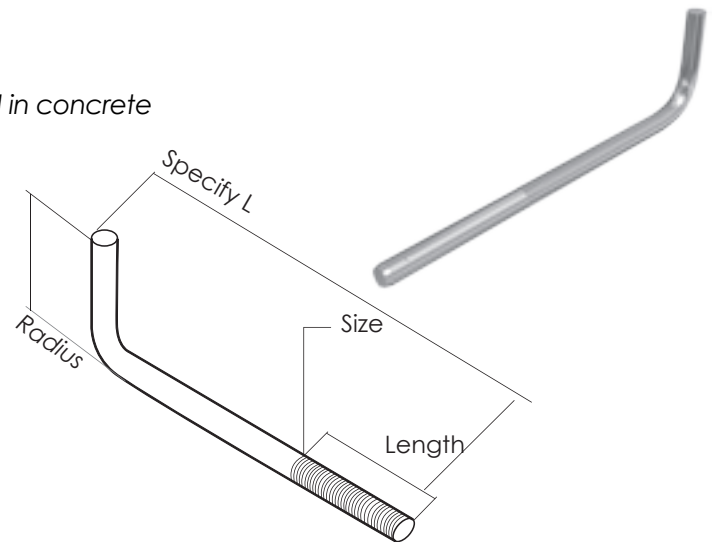
Part No.	Thread		Radius	Load Capacity
	Size	Length		
	mm	mm	mm	KN
PC-1220-C-JB1050	10	50	13.0	1.00
PC-1225-C-JB1250	12	50	16.0	1.90
PC-1230-C-JB1660	16	60	19.0	3.10
PC-1235-C-JB2060	20	60	22.1	4.60
PC-1240-C-JB2260	22	60	25.1	6.50
PC-1245-C-JB2575	25	75	35.0	7.00



L - Bolt

- **Material:** Steel S235
- **Service:** Designed for use as an anchor embedded in concrete
- **Finish:** Electro Zinc Plated

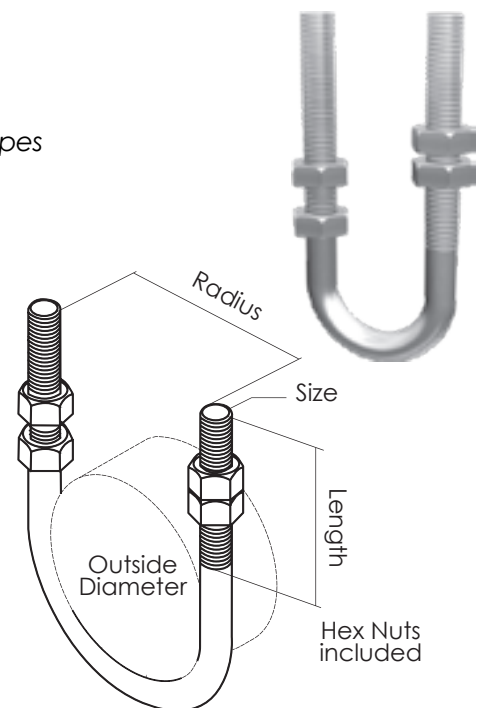
Part No.	Thread		Radius	Load Capacity
	Size	Length		
	mm	mm	mm	KN
PC-1320-C-AB1050	10	50	50	1.00
PC-1325-C-AB1250	12	50	60	1.90
PC-1330-C-AB1660	16	60	70	3.10
PC-1335-C-AB2060	20	60	75	4.60
PC-1340-C-AB2260	22	60	90	6.50
PC-1345-C-AB2575	25	75	35.0	7.00



Light Duty U - Bolt

- **Material:** Steel S235
- **Finish:** Electro Zinc Plated
- **Application:** Designed as a support, guide, or anchor for light - duty pipes

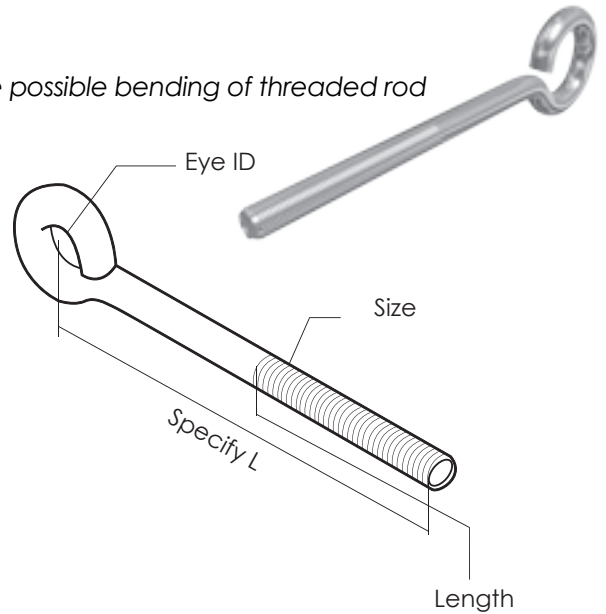
Part No.	Nominal Pipe Size		Thread		Outside Diameter	Load Capacity
	In	mm	Size	Length		
			mm	mm	mm	KN
PC-1410-C-LDUB05006	1/2	15	6	20	22	0.40
PC-1415-C-LDUB07506	3/4	20	6	30	28	0.40
PC-1420-C-LDUB10006	1	25	6	30	35	0.40
PC-1425-C-LDUB12506	5/4	32	6	30	43	0.40
PC-1430-C-LDUB15006	3/2	40	6	35	50	0.40
PC-1435-C-LDUB20006	2	50	6	35	61	0.40
PC-1440-C-LDUB25008	5/2	65	8	35	78	0.90
PC-1445-C-LDUB30008	3	80	8	40	92	0.90
PC-1450-C-LDUB40010	4	100	10	50	116	1.00
PC-1455-C-LDUB60012	6	150	12	50	170	2.00



Eye Rod

- **Material:** Steel S235
- **Finish:** Electro Zinc Plated
- **Application:** Designed for use in hanger supports to eliminate possible bending of threaded rod

Part No.	Thread		Eye	Load Capacity
	Size	Length		
Part No.	mm	mm	mm	KN
PC-1510-C-ERD0608	6	40	8	0.50
PC-1515-C-ERD0810	8	40	10	0.80
PC-1520-C-ERD1012	10	50	12	1.00
PC-1525-C-ERD1216	12	50	16	2.00
PC-1530-C-ERD1620	16	50	20	3.10
PC-1535-C-ERD2022	20	75	22	4.70
PC-1540-C-ERD2225	22	90	25	6.50
PC-1545-C-ERD2528	25	100	28	8.60
PC-1550-C-ERD2830	28	115	30	10.80
PC-1555-C-ERD3034	30	130	34	14.00

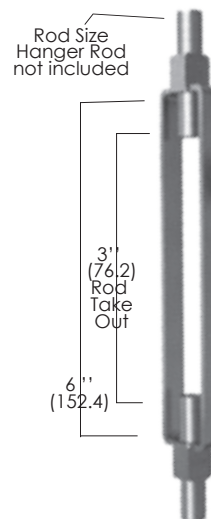


Buckle

Turnbuckle

- **Material:** Steel S235
- **Finish:** Electro Zinc Plated

Part No.	Rod Size
	mm
PC-1605-C-TBKL06	6
PC-1610-C-TBKL08	8
PC-1615-C-TBKL10	10
PC-1620-C-TBKL12	12
PC-1625-C-TBKL16	16
PC-1630-C-TBKL20	20
PC-1635-C-TBKL22	22
PC-1640-C-TBKL25	25
PC-1645-C-TBKL25	25
PC-1650-C-TBKL25	25
PC-1655-C-TBKL25	25
PC-1660-C-TBKL25	25



- Available in Zinc Plated Thread & Stainless Steel Thread

ASTM F436

Washers (SRW) | DIN 125 | ASTM F436

Zinc Plated	Stainless Steel	D	d	S
		(mm)	(mm)	(mm)
M6	M6	12	6.4	1.6
M8	M8	16	8.4	1.6
M10	M10	21	10.5	2
M12	M12	24	13	2.5
M16	M16	30	17	3
M18	M18	34	19	3.2
M20	M20	39	20.5	3.6



Order Example: SRW - M 12 -DIN 115

Round Washers DIN 440, DIN 9021

Washers (SRW) | DIN 440 | DIN 9021

DIN	Zinc Plated	Stainless Steel	D	d	S
			(mm)	(mm)	(mm)
440	M6		22	6.6	2
9021	M8	M8	24	8.4	2
9021	M10	M10	30	10.5	2.5
440	M12		45	13.5	4
9021	M12	M12	37	13	3
9021	M16	M16	50	17	3



Order Example: SRW - M 12 DIN 9021

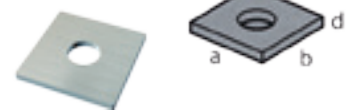
Square Washers SSW

Square Washers (SSW)

H.D. Galvanized Bolt	Stainless Steel Bolt	a x b x d
		(mm)
M8	M10	40 x 40 x (4-5-6)
M10	M12	40 x 40 x (4-5-6)
M12	M16	40 x 40 x (4-5-6)

Order Example: SSW 41/41 M 12 - d

SSW 40/40 for all channels
41/21 Series



SSW 41/41 for all channels
41/41 Series



Round Head Machine Screws

Round Head (SRH) | DIN 7985

Zinc Plated Thread	Length	d
	(mm)	(mm)
M6	30-40	6.0
M8	30-40	8.0
M10	20-60	10.0

SRH - M10 DIN 7985



Coupler Sleeves Rounded

Coupler Sleeves (SCS)

Electro-plated Thread	Stainless Steel Thread	D	L	Load Capacity
		(mm)	(mm)	(kN)
M6	M6	10/10	15	2.2
M8	M8	12/14	20	4.0
M10	M10	13/16	25	6.4
M12	M12	16/20	30	9.3
M16	M16	21/25	40	17.3
M20	M20	26/32	50	27.0

SCS - M16



Fully Threaded Rods Grade 4.6 DIN 975 ASTM A 36, A193

Threaded Rod (STR) - DIN 975 - ASTM A36

Zinc Plated Thread	Length	Load cap.
	(mm)	(kN)
M6	2000/3000	2.2
M8	2000/3000	4.0
M10	2000/3000	6.4
M12	2000/3000	12.9
M16	2000/3000	17.3
M18	2000	22.0
M20	2000	27.0



Roofing Bolts

Roofing Bolts (SRB)

- Materials : low carbon steel , carbon steel
- Steel S235 , grade 4.6 , 4.8 and 8.8
- Surfaces : plain , black and zinc plated
- Length = X (mm) – Y (mm)



Thread Size	M4 x - y	M5 x - y	M6 x - y	M8 x - y
	(mm)	(mm)	(mm)	(mm)
Length	10 - 50	10 - 80	12 - 120	16 - 150

Order Example: SRB - M6

Hexagon Nuts DIN 934, DIN EN 24032, ASTM A 563

Hexagon nut (SHN) | DIN 934 or ISO 4032 (= DIN EN 24032) | ASTM A563



Zinc Plated Thread	Stainless Steel Thread	S/m DIN	S/m ISO	e
		(mm)	(mm)	(mm)
M6	M6	10/5	10/6	11.5
M8	M8	13/6.5	13/7.5	15.0
M10	M10	17/8	16/9.5	19.6
M12	M12	19/10	18/12	21.9
M16	M16	24/13	24/15.5	27.7
M18	M18	26/16	26/16	22.0
M20	M20	30/18	29/20.5	27.0

Order Example: SHN - M12

Hexagonal Rod Coupler Grade 8.8 ASTM a 563

Hexagonal Rod Coupler with view hole (SHR)



Electroplated Thread	Stainless Steel Thread	D	L	Load capacity
		(mm)	(mm)	(kN)
M10	M10	13	40	6.4
M12	M12	17	40	9.3
M16	M16	22	50	17.3
M 18	M 18	23	60	22.0
M 20	M 20	25	70	27.0

Order Example: HRC - GV - M 12

Carriage Bolts with Nut Below Head DIN 603

Carriage Bolts (STC)



Zinc Plated	H.D. Galvanized Grade 4.6	Length	Head	Square Width	Square Depth
(E)	(E)	(A) mm	(H) mm	(O) mm	(P) mm
M5	M5	12.0	3.0	5.0	3.2
M6	M6	15.1	3.70	6.40	4.0
M8	M8	18.3	4.50	8.23	4.75
M10	M10	21.44	5.30	9.86	5.56
M16	M16	34.14	8.74	16.3	8.74

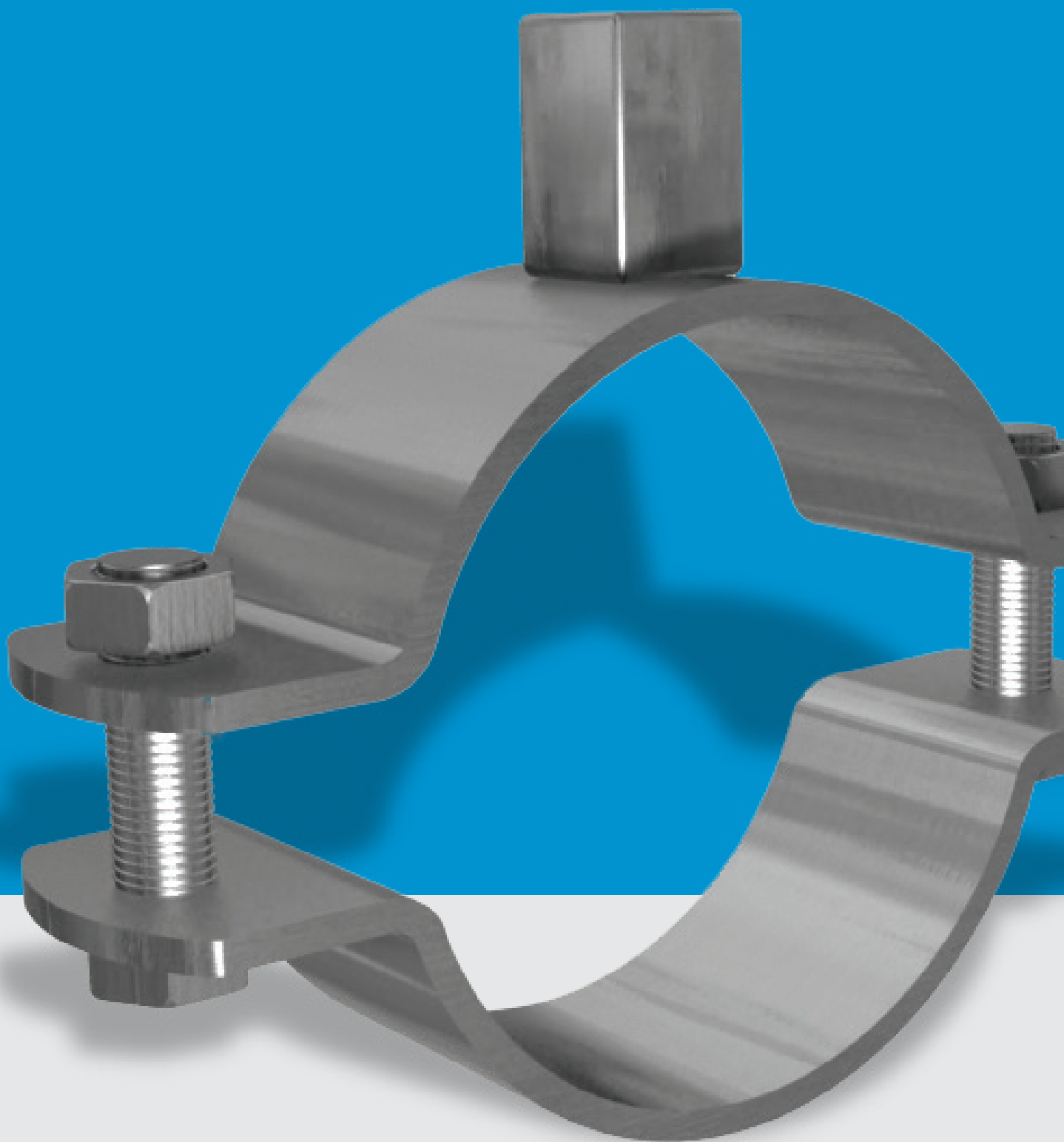
Order Example: STC - M6

DIN 933, DIN 24017, ASTM A307, A449

Hex Head Bolt (SHB) | DIN 933 or EN 24017 ASTM A307, A449 (without nut)

Zinc Plated Dimension	Stainless Steel Dimension	S DIN	S EN
		(mm)	(mm)
M 6 x 12		10	10
M 6 x 25			
M 8 x 25	M 8 x 25		
M 8 x 40		13	13
M 10 x 20		17	16
M 10 x 30	M 10 x 30		
M 10 x 45	M 10 x 45		
M 10 x 60			
M 10 x 70			
M 12 x 22		19	18
M 12 x 25	M 12 x 25		
M 12 x 30	M 12 x 30		
M 12 x 40	M 12 x 40		
M 12 x 50			
M 12 x 60	M 12 x 60		
M 12 x 80	M 12 x 80		
M 12 x 90		24	24
M 16 x 40	M 16 x 40		
M 16 x 60	M 16 x 60		
M 16 x 90	M 16 x 90		
M 18 x 40	M 18 x 40		
M 18 x 50	M 18 x 50	27	26
M 18 x 60	M 18 x 60		
M 18 x 80	M 18 x 80		
M 20 x 40	M 20 x 40	32	32
M 20 x 50	M 20 x 50		
M 20 x 60	M 20 x 60		
M 20 x 80	M 20 x 80		





www.sfsp-ikk.com



TECHNICAL DATA

Rigid Steel Conduit (Heavy Wall Conduit)

Nominal Conduit Size		Outside Diameter		Nominal Inside Diameter		Minimum Weight with Couplings Attached	
In	mm	In	mm	In	mm	Lbs/100 Ft.	Kg/10 m
3/8	10	0.67	17.1	0.49	12.5	51.5	7.8
1/2	15	0.84	21.3	0.63	16.0	79.0	11.6
3/4	20	1.05	26.7	0.83	21.3	105.0	15.8
1	25	1.31	33.4	1.06	27.0	153.0	23.1
5/4	32	1.66	42.2	1.39	35.4	201.0	30.4
3/2	40	1.90	48.3	1.62	41.3	249.0	37.6
2	50	2.37	60.3	2.08	52.9	332.0	50.2
5/2	65	2.87	73.0	2.48	63.2	527.0	79.7
3	80	3.50	88.9	3.09	78.5	682.6	103.2
7/2	90	4.00	101.6	3.57	90.7	831.0	125.6
4	100	4.50	114.3	4.05	102.9	972.3	147.0
5	125	5.56	141.3	5.07	128.9	1313.6	198.6
6	150	6.62	168.3	6.09	154.8	1745.3	263.9

Intermediate Metal Conduit (IMC)

Nominal Conduit Size		Outside Diameter		Nominal Inside Diameter		Minimum Weight with Couplings Attached	
In	mm	In	mm	In	mm	Lbs/100 Ft.	Kg/10 m
1/2	15	0.81	20.7	0.74	18.9	60.0	0.7
3/4	20	1.02	26.1	0.95	24.2	82.0	12.4
1	25	1.29	32.7	1.20	30.6	116.0	17.5
5/4	32	1.63	41.6	1.55	38.9	150.0	22.6
3/2	40	1.88	47.8	1.79	45.5	182.0	27.3
2	50	2.36	59.9	2.26	57.5	242.0	36.5
5/2	65	2.85	72.5	2.72	69.2	401.0	60.6
3	80	3.47	88.3	3.34	85.0	493.0	74.5
7/2	90	3.97	100.8	3.84	97.5	573.0	86.6
4	100	4.46	113.4	4.33	110.1	638.0	96.4

Conduit Size		Maximum Support Span	
In	mm	Feet	Meters
1	25	12	3.60
5/4 - 3/2	32 - 40	14	4.30
2 - 5/2	50 - 65	16	4.90
3 - 6	80 - 150	20	6.00

Conduit plus weight of heaviest conductor combination as specified by the National Electrical Code. Rigid and Intermediate Metal Conduit shall be supported at least every 10 feet (3.05m) and within 3 feet (914mm) of each outlet box, junction box, cabinet, or fitting. Except for straight runs of conduit connected with couplings which may be supported in accordance with NEC Article 345 and 346, provided such supports prevent transmission of stresses to termination where conduit is deflected between supports.

Pipe Comparison Data

Nominal Pipe Size		Outside Diameter	
In	mm	DIN(mm)	ISO(mm)
3/8	10	14	17.2
1/2	15	20	21.3
3/4	20	25	26.9
1	25	30	33.7
5/4	32	38	42.4
3/2	40	44.5	48.3
2	50	57	60.3
5/2	65	76.1	76.1
3	80	88.9	88.9
7/2	90	101.6	101.6
4	100	108	114.3
5	125	133	139.7
6	150	159	168.3
8	200	216	219.1
10	250	267	273.0
12	300	318	323.9
14	350	368	355.6
16	400	419	406.4
18	450	459	457.2
20	500	521	508.0
24	600	622	609.6
28	700	720	711.2
32	800	820	812.8
36	900	920	944
40	1000	1020	1016.0

Electrical Metallic Tubing (EMT) Thinwall Conduit

Conduit plus weight of heaviest conductor combination as specified by the National Electrical Code. Electrical Metallic tubing shall be supported at least every 10 feet and within 3 feet (914mm) of each outlet box, junction box, cabinet, or fitting. See NEC Article 348.

Dimensions taken from ANSI C80.3-1977

Nominal Conduit Size		Outside Diameter		Nominal Inside Diameter		Minimum Weight with Couplings Attached	
In	mm	In	mm	In	mm	Lbs/100 Ft.	Kg/10m
3/8	10	0.57	14.7	0.49	12.5	23.0	3.4
1/2	15	0.70	17.9	0.62	15.8	28.5	4.3
3/4	20	0.92	23.4	0.82	20.9	43.5	6.5
1	25	1.16	29.5	1.04	26.6	64.0	9.6
5/4	32	1.51	38.3	1.38	35.1	95.0	14.3
3/2	40	1.74	44.2	1.61	40.9	110.0	16.6
2	50	2.19	55.8	2.06	52.5	140.0	21.1
5/2	65	2.87	73.0	2.73	69.4	205.0	31.0
3	80	3.50	88.9	3.35	85.2	250.0	37.8
7/2	90	4.00	101.6	3.83	97.4	325.0	49.1
4	100	4.50	114.3	4.33	110.1	370.0	55.9

Rigid Aluminum Conduit

Dimensions taken from ANSI C80.5-1977.

Nominal Conduit Size		Outside Diameter		Nominal Inside Diameter		Minimum Weight with Couplings Attached	
In	mm	In	mm	In	mm	Lbs/100 Ft.	Kg/10m
1/2	15	0.84	21.3	0.63	16.1	27.4	5.3
3/4	20	1.05	26.7	0.83	21.2	36.4	12.4
1	25	1.31	33.4	1.06	27.0	53.0	17.5
5/4	32	1.66	42.2	1.39	35.4	69.6	22.6
3/2	40	1.90	48.3	1.62	41.2	82.2	27.5
2	50	2.37	60.3	2.08	52.9	115.7	36.5
5/2	65	2.87	73.0	2.48	63.2	182.5	60.6
3	80	3.50	88.9	3.09	78.5	238.9	74.5
7/2	90	4.00	101.6	3.57	90.7	287.7	86.6
4	100	4.50	114.3	4.05	102.9	340.0	51.4
5	125	5.56	141.3	5.07	128.9	465.4	70.3
6	150	6.62	168.3	6.09	154.8	612.5	92.6

Conduit Size		Maximum Support Span	
In	mm	Feet	Meters
1/2 -3/4	15-20	10	3.00
1	25	12	3.60
5/4-3/2	32-40	14	4.30
2-5/2	50-65	16	4.90
3-6	80-150	20	6.00

Conduit plus weight of heaviest conductor combination as specified by the National Electrical Code. Aluminum Rigid Conduit shall be supported at least every 10 feet (3.05m) and within 3 feet (914mm) of each outlet box, junction box, cabinet, or fitting. Except for straight runs of conduit connected with couplings which may be supported in accordance with NEC Table 346-12, provided such supports prevent transmission of stresses to termination where conduit is deflected between supports.



Copper Tubing, Type L

Nominal Conduit Size		Outside Diameter		Nominal Inside Diameter		Minimum Weight with Couplings Attached	
In	mm	In	mm	In	mm	Lbs/100 Ft.	Kg/10m
3/8	10	0.67	17.1	0.49	12.5	57.0	8.6
1/2	15	0.84	21.3	0.62	15.8	85.0	12.8
3/4	20	1.05	26.7	0.82	20.9	113.0	17.1
1	25	1.31	33.4	1.04	26.6	168.0	26.0
5/4	32	1.66	42.2	1.38	35.1	227.0	34.3
3/2	40	1.90	48.3	1.61	40.9	272.0	41.1
2	50	2.37	60.3	2.06	52.5	365.0	55.2
5/2	65	2.87	73.0	2.46	62.7	579.0	87.5
3	80	3.50	88.9	3.06	77.9	758.0	114.6
7/2	90	4.00	101.9	3.54	90.1	911.0	137.6
4	100	4.50	114.3	4.02	102.3	1079.0	163.1
5	125	5.56	141.3	5.04	128.2	1462.0	221.0
6	150	6.62	168.3	6.06	154.1	1897.0	286.8
8	200	8.62	219.1	10.02	202.7	2855.0	431.6
10	250	10.75	271.1	7.98	254.5	4048.0	612.0
12	300	12.75	323.1	12.00	304.8	4956.0	749.3
14	350	14.00	355.6	13.25	336.6	5457.0	825.1
16	400	16.00	406.4	15.25	387.4	6258.0	946.2
18	450	18.00	457.2	17.20	438.2	7059.0	1067.3
20	500	20.00	508.0	19.25	489.0	7860.0	1188.4
24	600	24.00	609.6	23.25	590.6	9462.0	1430.6

Schedule 40 PUC Plastic Pipe

Nominal Conduit Size		Outside Diameter		Nominal Inside Diameter		Minimum Weight with Couplings Attached	
In	mm	In	mm	In	mm	Lbs/100 Ft.	Kg/10m
1/8	3	0.40	10.3	0.26	6.8	4.7	0.7
1/4	6	0.54	13.7	0.36	9.2	8.2	1.2
3/8	10	0.67	17.1	0.49	12.5	10.9	1.6
1/2	15	0.84	21.3	0.62	15.8	16.4	2.4
3/4	20	1.05	26.7	0.82	20.9	21.8	3
1	25	1.31	33.4	1.04	26.6	32.1	4.8
5/4	32	1.66	42.2	1.38	35.1	43.4	6.5
3/2	40	1.90	48.3	1.61	40.9	51.8	7.8
2	50	2.37	60.3	2.06	52.5	69.5	10.3
5/2	65	2.87	73.0	2.46	62.7	109.6	16.5
3	80	3.50	88.9	3.06	77.9	143.5	21.7
7/2	90	4.00	101.6	3.54	90.1	175.6	26.5
4	100	4.50	114.3	4.02	102.3	204.3	30.9
5	125	5.56	141.3	5.04	128.2	281.7	42.6
6	150	6.62	168.3	6.06	154.1	360.9	54.5
8	200	8.62	219.1	7.98	202.7	545.3	82.4
10	250	10.75	273.1	10.02	254.5	791.3	119.6
12	300	12.75	323.9	11.93	303.2	1035.2	156.5

LOCATIONS

KINGDOM OF SAUDI ARABIA

unitech.ksa@ikkgroup.com

Jeddah

Tel : +966 12 627 8222
Fax: +966 12 627 8722

Mak kah/Taif

Tel : +966 12 541 1206
Fax: +966 12 532 1675

Riyadh

Tel : +966 11 292 8200
Fax: +966 11 456 6627

Qassim / Buraidah

Tel : +966 16 382 3946
Fax: +966 16 385 2186

Skakah / Qurayyat

Tel : +966 14 626 3904
Fax: +966 14 626 3905

Tabuk

Tel : +966 14 423 5203
Fax: +966 14 423 5203

Khamis Mushayt

Tel : +966 17 237 5929
Fax: +966 17 237 8783

Gizan

Tel : +966 17 321 6660
Fax: +966 17 321 0665

Mad inah

Tel : +966 14 842 1095
Fax: +966 14 842 1090

Yanbu

Tel : +966 14 390 1499
Fax: +966 14 322 7101

Dammam

Tel : +966 13 859 0097
Fax: +966 13 857 8177

Jubail

Tel : +966 13 361 4390
Fax: +966 13 362 4499

Hofuf

Tel : +966 13 530 1474
Fax: +966 13 530 7144

FACTORIES

SFSP - KSA

sfsp.jeddah@ikkgroup.com

Specialized Factory for Steel Products
3rd Industrial City / Jeddah

Tel: +966 12 637 4482
Fax: +966 12 636 1963

SFSP / UAE

sfsp.uae@ikkgroup.com

SIGMA Factory for Steel Products
DIC (Dubai Industrial City)

Tel : +971 4 818 1919

SFSP / Egypt

sfsp.cairo@ikkgroup.com

Specialized Factory for Steel Products
6th of October City Giza

Tel : +20 2 3820 6477
Fax: +20 2 3820 6036

SFSP / Lebanon

sfsp.lebanon@ikkgroup.com

Specialized Factory for Steel Products
Tanayel, Bekaa

Tel: +961 8 514 290
Fax: +961 8 514 291

BAHRAIN

unitech.bahrain@ikkgroup.com

Manama

Tel : +973 17 874 897
Fax: +973 17 789 470

KUWAIT

unitech.kuwait@ikkgroup.com

Kuwait City

Tel : +965 2 4924 937
Fax: +965 2 4924 938

UNITED ARAB EMIRATES

unitech.uae@ikkgroup.com

Dubai - Al Rashidiyah

Tel : +971 4 2591 773
Fax: +971 4 2591 774

Abu Dhabi - Musaffah

Tel: +971 2 552 3393
Fax: +971 2 552 5499

OMAN

unitech.oman@ikkgroup.com

Muscat

Tel : +968 24 591 006
Fax : +968 24 597 006

JORDAN

unitech.jordan@ikkgroup.com

Amman

Tel : +962 6 556 3030
Fax: +962 6 554 7911

Aqaba

Tel : +962 6 556 3030
Fax: +962 6 554 7911

PAKISTAN

unitech.pakistan@ikkgroup.com

Lahore - Punjab

Tel: +92 42 32301578

EGYPT

unitech.egypt@ikkgroup.com

Cairo 6th of October City

Tel : +20 2 3820 6477
Fax: +20 2 3820 6036

LEBANON

unitech.lebanon@ikkgroup.com

Beirut

Tel : +961 1 858 277
Fax: +961 1 858 276

ENGINEERING, DESIGN, MARKETING & MULTIMEDIA

Unitech Deutschland GmbH

Germany

unitech.germany@ikkgroup.com

Stuttgart

Tel : +49 711 6868 7222
Fax: +49 711 6868 7223

Multi-D s.a.r.l

Lebanon

multi-d@ikkgroup.com

Multi-d Beirut

Tel : +961 1 841 155
Fax: +961 1 841 156

SFSP makes every effort to maintain the accuracy and quality of the information provided in this Catalogue.

However, SFSP cannot guarantee and assumes legal liability or responsibility for the accuracy or completeness of the information provided.

Whilst every care has been exercised in the preparation of this catalogue to ensure that any advice, recommendations or information is accurate, no liability or responsibility of any kind is accepted.

Project working details should be entrusted to appropriately qualified and experienced persons, case by case.

With a policy of continuous product development, SFSP may modify product design and specification without due notice.

In case of any questions or remarks, feel free to contact the R&D Department.

DISTRIBUTED BY:



www.sfsp-ikk.com