

Specialized Factory for Steel Products  
SIGMA Factory for Steel Products



# EXPANDED METALS, PLASTER BEADS CATALOGUE

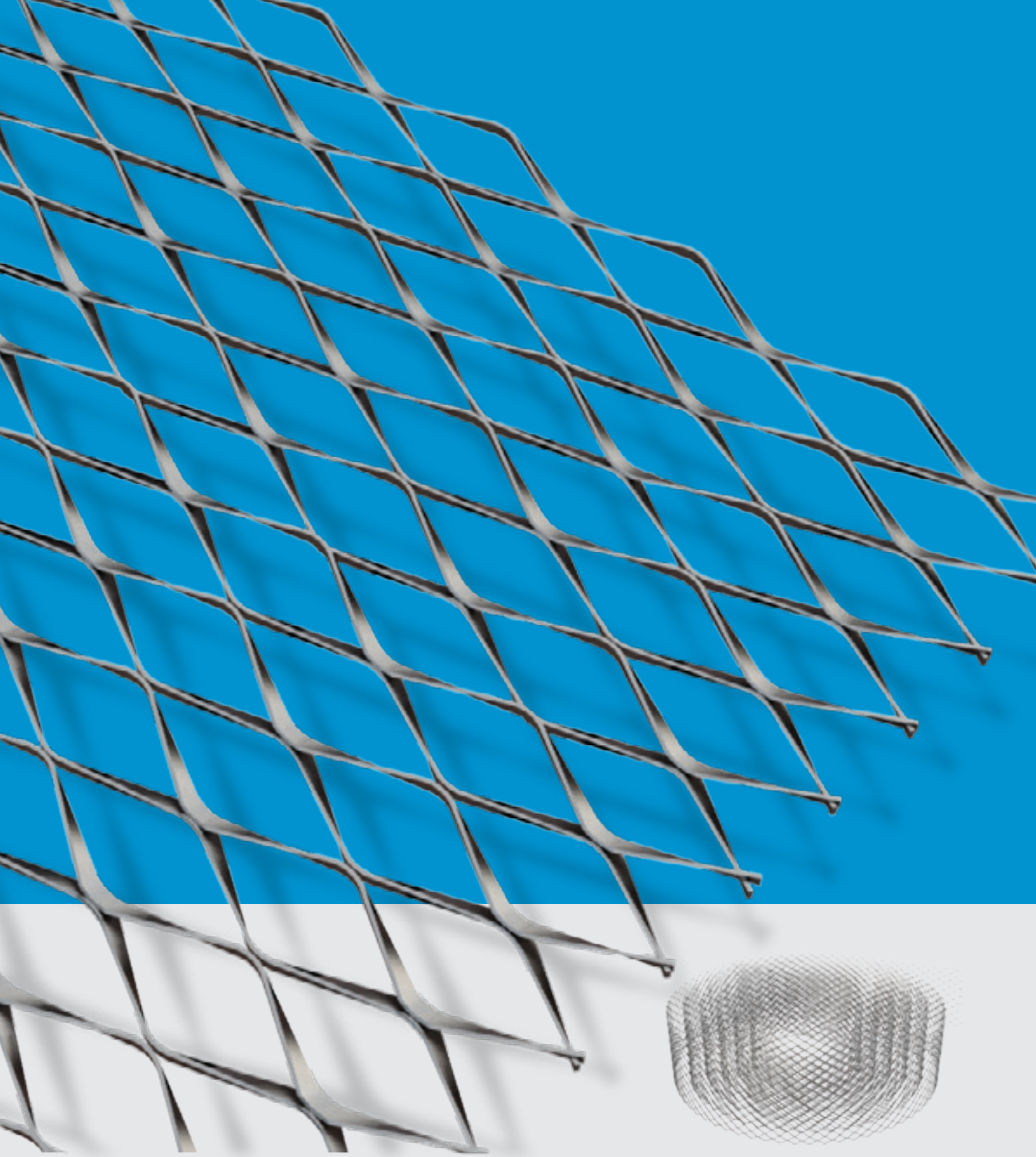


[www.ikkgroup.com](http://www.ikkgroup.com)

# INDEX

## Expanded Metals, Plaster Beads Catalogue

About SFSP	4
Expanded Metals, Plaster Beads	20
Locations	38



[www.sfsp-ikk.com](http://www.sfsp-ikk.com)



# ABOUT SFSP





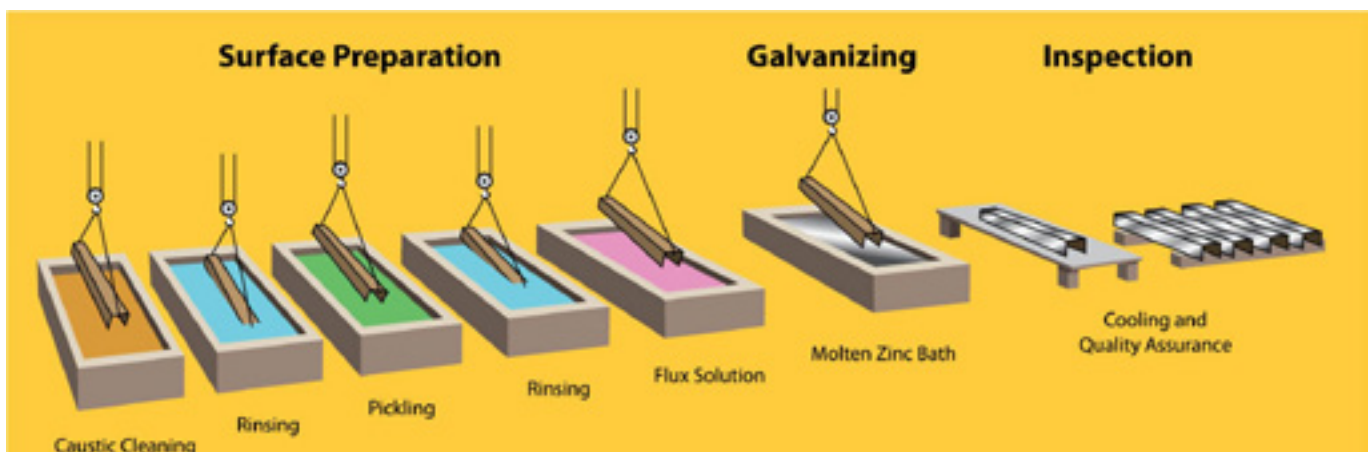
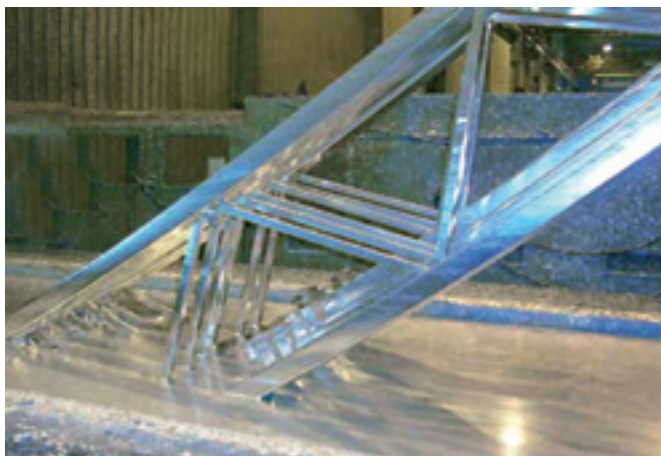
Specialized/Sigma Factory for Steel Products (SFSP) was first established in KSA in 1989 and has been expanding ever since through a variety of products and through its geographical presence. Production at the factory is observed using modern practices of manufacturing methods in the steel construction industry with a definite compliance to international standards of fabrication.

SFSP has manufacturing facilities in KSA, UAE, Egypt, and Lebanon. SFSP adapts quickly and easily to market demands and requirements. The factory is operating a top of the line production machinery, fully automated with highest technology to ensure quality and maintain speed with delicacy.

Quality at SFSP is uncompromised; the factories have been able to acquire ISO 9001: 2015 Quality Management System, ISO 14001:2015 Environmental Management certified factory, and OHSAS 18001:2015 Occupational, Health and Safety Management factory.

## HOT-DIP GALVANIZATION

SFSP has an in-house state of the art Hot-Dip Galvanization facility, which permits a full control of the quality of its finished products, offering better services to its clients globally.





## Specialized Factory for Steel Products Co. Ltd

[www.sfsp-ikk.com](http://www.sfsp-ikk.com)

Specialized Factory for Steel Products Co., Ltd, which is part of Isam Khairi Kabbani Group of companies is a leading fabricator of steel construction products serving the kingdom of Saudi Arabia since 1989.

The factory operates under TQM ISO modules, using the latest modern technology in the steel fabrication and manufacturing industry in conformity with International standards for safety and in compliance with the environmental regulations in the Kingdom.

The factory has inaugurated its new manufacturing facilities which is located in the 3rd Industrial Area of Jeddah with a total built facilities of 37,000 squared meters.



The facilities include two manufacturing areas, a hot dip galvanization advanced section, warehousing areas and administrative building. The project is an advanced environmental low emissions factory built with a definite consideration of the safety of its workers and visitors.



## TECHNICAL SERVICES

A crucial factor in the job of a factory is to provide continuous technical services and consultations. That's why SFSP has invested in a professional team of researchers and specialists.

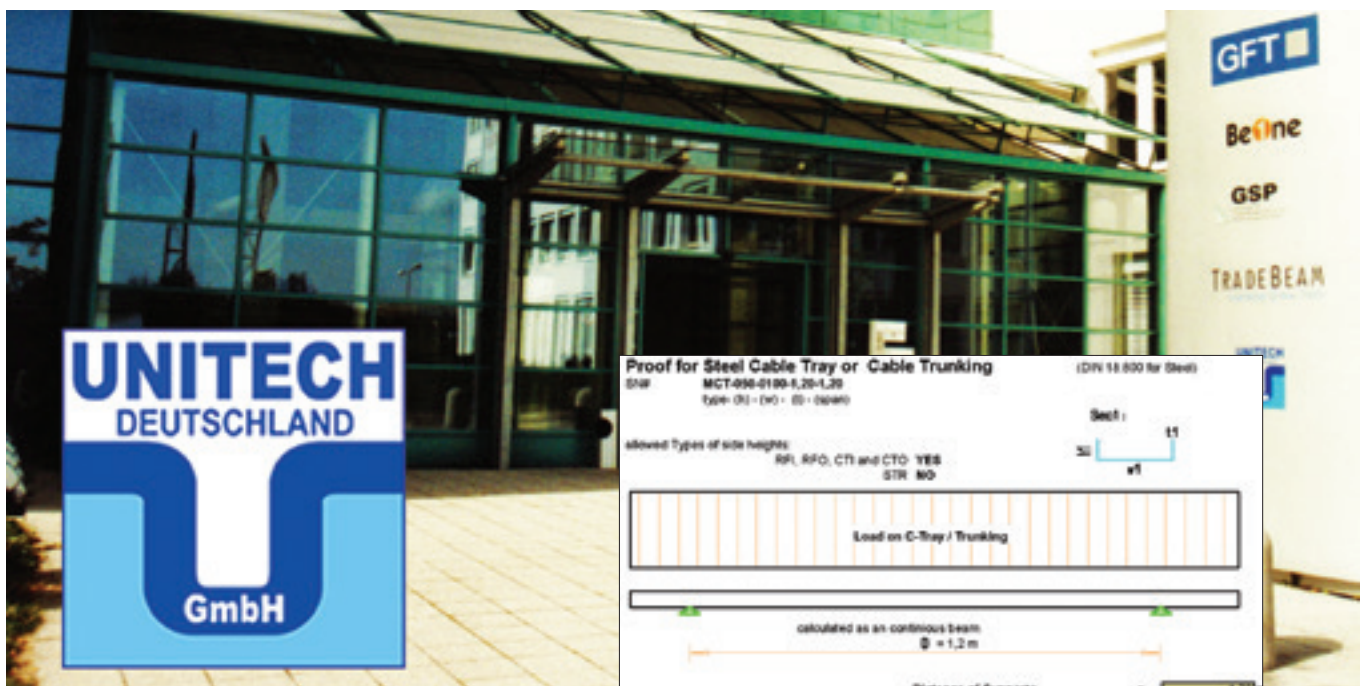
SFSP has recruited brilliant graduates and experienced engineers having the appropriate know on the on latest technology changes and development in the steel building materials industry.

The product range is developed and updated according to the relevant standards of fabrication across markets, whilst the business processes are evaluated to achieve maximum efficiency.

### SFSP R&D Core Objectives

- Carry out responsibilities effectively in a safe and healthy work environment.
- Develop and implement research programs relevant to the products and solutions introduced and ensure that the results are communicated clearly in-house and among the clients , concisely and accurately.

## DESIGN AND ENGINEERING OFFICE - GERMANY



Unitech Deutschland GmbH is the design and engineering office of Unitech for Building and Construction Materials and is situated in Stuttgart, Germany.

# Proof for Steel Cable Tray or Cable Trunking

(DIN 18 050 for Steel)

SNR

MCT-090-0190-1,20-1,20

Type: (R) - (W) - (S) - (S) - (S)

Sec 1:

allowed Types of side heights:

RFL, RFO, CFI and CTO: YES

STR: NO

Load on C-Tray / Trunking

calculated as an continuous beam

$\Phi = 1,2 \text{ m}$

Distance of Supports  
Load on Cable Tray

D	1,20
L	0,74
	0,09

Cable Tray  
Sec 1:

w	100
b	50
t	1,20

\*\* Center Load only possible for  $w_t \leq 200 \text{ mm}$  !!

SN	Mechanical Properties	Equations	Figures	unit
1	Type of materials used	$\sigma_{10} = \sigma_{10} \cdot 1,0015$	6 235	JRG2
2	Allow. 0.2 Yield Stress up to 50°C	$R_{0,2} = F_{0,2} / 1,1$	21,82	N/mm <sup>2</sup>
3	Allow. Shear Stress		12,80	N/mm <sup>2</sup>
4	Allow. Deflection	$\delta / 200 =$	8,90	mm
5	Modulus of Elasticity		21.000	N/mm <sup>2</sup>

## Applied Loads

1	Distance of Supports	D =	120,00	cm
2	Self Weight Cable	$G_{10}$	1,74	N/mm
3	Self Weight Cable Tray	$G_{10} +$	8,92	N/mm
4	Self Weight	$G_{10} + G_{10} + G_{10}$	1,76	N/mm



## SOCIAL RESPONSIBILITY

Being socially responsible is a part of who we are and how we do our business. We aim to provide useful products and services, to provide jobs and development opportunities for our communities, and to gain satisfaction through meaningful work.

We make a difference by acting on the values and principles of our societies and we inspire others to do so. At SFSP, we anticipate and reduce threats caused by environmental changes or natural disasters, and we are well adapted to significant social changes.

We contribute to a more sustainable society by means of value and support to our consumers, supply chains, and stakeholders. We are keen to identify ways they can improve our impacts on the people and places we work and live in, and thereby become more valuable and valued members of society.

- Organizational governance: We promote accountability and transparency at all levels, thus, promoting responsibility
- Human care: We treat individuals with respect; and make efforts to help members of vulnerable groups
- Labor practices: We provide just, safe and favorable conditions to workers
- Environment: At SFSP, we identify and improve environmental impacts of our operations, including the resource use of natural resources and waste disposal.



- Fair operating practices: Practicing accountability and fairness in dealings with other businesses

At SFSP, we are committed to continuous improvement ongoing learning, process review and innovative thinking that foster new initiatives; and better practices. Our environmental programs evolve to meet today's changing needs while; protecting resources for future generations.

## HEALTH AND SAFETY

The Factory Management regard the health and safety of the employees, clients and all others that may be affected by their operations to be of a major importance.

In support of this, the management promotes health and safety throughout the Factory's operations and endeavour to engender a positive attitude in all employees towards the prevention of accidents and maintenance of healthy working arrangements.

The Factory satisfies the requirements of the Health, Safety and related legislation by setting out the responsibilities of all levels of staff and the arrangements for carrying out those responsibilities and in particular do what is reasonably practicable to:

1. Maintains safe & healthy working conditions.

2. Ensures that all facilities and equipment are safe and properly maintained.
3. Provides products that can be applied and used safely and without risk to health.
4. Provides and maintain working procedures, that are safe and without risk to health, throughout the its operations in respect of:
  - The use, handling, storage, transports and disposal of materials and substances.
  - The use of factory equipment.
  - Potential emergency situations, including first aid, fire and escape of substances.
5. Ensure the competence of employees.

**The factory is an OHSAS 18001:2007 Occupational, Health and Safety Management certified Factory.**





## ENVIRONMENTAL AWARENESS

### SFSP is committed to the following:

- Compliance with all statutory and regulatory requirements related to its activities, products and services and the environmental aspects.
- Identifying quality and environmental objectives by review and audit of the processes both in-house and on-site.
- Formally setting objectives based on the results of the process reviews and their significance in relation to their impact on the environment and the continual improvement of the quality and environmental management system.
- Implementing management programs to achieve these objectives.
- Investing in a well-trained and motivated workforce.
- Working closely with suppliers and customers to ensure mutual understanding and benefits of the environmental aspects consideration.
- Reviewing our policy and objectives as part of the Management Review Process.
- Communicating this policy to all persons working for or on behalf of the organization.
- Preventing and minimizing Pollution to the environment.



SFSP operates under environmental management system certification BS EN ISO 14001:2004 and maintain it through registration and annual review.



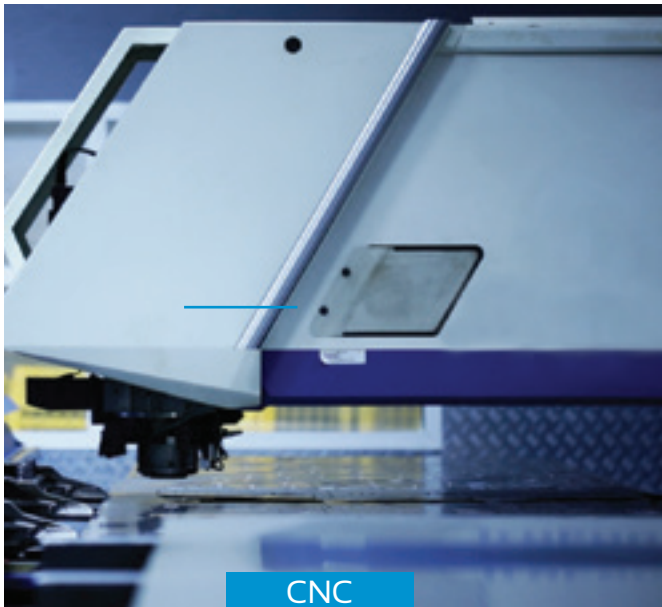
SFSP facilities are equipped with the most technologically advanced machinery amongst are Laser Cut Machines, Robot Bending Sets, Welding Robot Sets, sophisticated Cable Management Production Lines, as well as Specialized Industrial Sections for its Hot Dip Galvanization facilities.



## CNC MACHINES



WELDING  
ROBOT  
SETS



CNC  
PUNCHING



FIBER LASER  
CUT



ROBOTIC  
BENDING  
CELL



# SFSP CERTIFICATION

**ISO 14001 Certified**  
(Environment Management System)

**ISO 18001 Certified**  
(Health & Safety Management system)



**ISO 9001 certified**  
(Quality Management System)





# CERTIFICATE

Issued to:  
Applicant:  
Isam Kabbani Trading Est. (Unitech)  
Rashidiya  
Dubai, United Arab Emirates

Manufacturer/Licensee:  
Sigma Factory for Steel Products (SFSP)  
Saiih Shuaib 3, 4R/A, Dubai Industrial City,  
Dubai, United Arab Emirates

Product : Cable management system  
Trade name : SFSP  
Types : IE-CT-X-10, IE-CT-X-12, IE-CT-X-15, IE-CT-X-20

The product and any acceptable variation thereto is specified in the Annex to this certificate and the documents therein referred to.

DEKRA hereby declares that the above-mentioned product has been certified on the basis of:

- a type test according to the standard BS EN 61537:2007 based on IEC 61537:2006
- an inspection of the production location according to CENELEC Operational Document CIG 021
- a certification agreement with the number 2156954

DEKRA hereby grants the right to use the KEMA-KEUR BS certification mark.

The KEMA-KEUR BS certification mark may be applied to the product as specified in this certificate for the duration of the KEMA-KEUR BS certification agreement and under the conditions of the KEMA-KEUR BS certification agreement.

This certificate is issued on: 3 February, 2014 and expires upon withdrawal of one of the above mentioned standards.

Certificate number: 2156954.02

DEKRA Certification B.V.

drs. G.J. Zoetbrood  
Managing Director

H.R.M. Barends  
Certification Manager

© Integral publication of this certificate is allowed

ACCREDITED BY THE  
DUTCH ACCREDITATION  
COUNCIL





## CERTIFICATE OF COMPLIANCE

Certificate Number 20160816-E483358  
Report Reference E483358-20160816  
Issue Date 2016-AUGUST-16

Issued to: Sigma Factory for Steel Products  
Saii Shuaib 3, 4 R/A Dubai Industrial City  
Opposite DEWA Substation  
Dubai UNITED ARAB EMIRATES

This is to certify that representative samples of CABLE TRAYS  
Steel Channel Cable Tray, Ventilated, Heavy Duty (HCT),  
Very Heavy Duty (VCT) cable trays.

Have been investigated by UL in accordance with the  
Standard(s) indicated on this Certificate.

Standard(s) for Safety: ANSI/NFPA 70, "National Electrical Code" (NEC)  
Additional Information: See the ULC Online Certification Directory at [www.ulc.ca](http://www.ulc.ca)  
for additional information

Only those products bearing the ULC Listing Mark should be considered as being covered by ULC's  
Listing and Follow-Up Service.

The ULC Listing Mark generally includes the following elements: the symbol ULC in a circle, with  
the word "LISTED", a control number (may be alphanumeric) assigned by ULC, and the product  
category name (product identifier) as indicated in the appropriate ULC Directory.

To confirm the status, validate the above information via the online directory.

Look for the ULC Listing Mark on the product.

*Joseph P. Kelly*  
Joseph P. Kelly, General Manager, Director of Sales - Canada  
UL CORPORATION, LABORATORIES OF CANADA INC.

Any information and documentation involving ULC Mark systems are provided on behalf of Underwriters Laboratories of Canada Inc. (ULC),  
a division of UL. For questions, please contact your local UL Customer Service Representative at <http://www.ul.com/aboutus/contact>

Page 1 of 1

## CERTIFICATE OF COMPLIANCE

Certificate Number 20170811-R38825  
Report Reference R38825-20170811  
Issue Date 2017-AUGUST-11

Issued to: Sigma Factory for Steel Products  
Saii Shuaib 3, 4 R/A Dubai Industrial City  
Opposite DEWA Substation  
Dubai UNITED ARAB EMIRATES

This is to certify that representative samples of CHUTE-TYPE FIRE DOORS  
Chute-type fire door and frame assembly of the insulated  
type, rated up to and including 2 hr, 450°F Temperature  
Rise Rating.

Have been investigated by UL in accordance with the  
Standard(s) indicated on this Certificate.

Standard(s) for Safety: ANSI/UL 10B, Fire Tests of Door Assemblies  
Additional Information: See the UL Online Certifications Directory at  
[www.ul.com/database](http://www.ul.com/database) for additional information

Only those products bearing the UL Certification Mark should be considered as being covered by UL's  
Certification and Follow-Up Service.

Look for the UL Certification Mark on the product.

*Bruce Mahrenholz*  
Bruce Mahrenholz, Director North American Certification Program  
UL LLC

Any information and documentation involving UL Mark systems are provided on behalf of UL LLC (UL) or any authorized licensee of UL. For questions, please  
contact a local UL Customer Service Representative at <http://www.ul.com/aboutus/contact>



Page 1 of 1

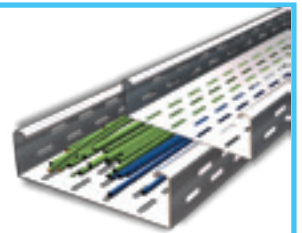


## SFSP PRODUCTS

SFSP produces a variety of products ranging from cable management systems; cable trays, cable ladders, basket trays, trunkings and support systems, to mechanical cladding fixations, steel lintels and block work accessories, Plaster beads, expanded metal and block work reinforcement, strut channel systems, pipe clamps & hangers, gypsum profiles as well as garbage and linen chutes. With the introduction of new machines and the enhancement of production methods, SFSP continues to develop its production methods systematically as well as thoroughly. Its design office in Stuttgart, Germany provides a comprehensive design and calculation case studies, enabling the factory to have the safety factors required for the usage of its products.

### Cable Trays & Accessories

Cable Trays are designed to meet most requirements of cable and electrical wire installations and comply to local and international standards of fabrications and finishes.



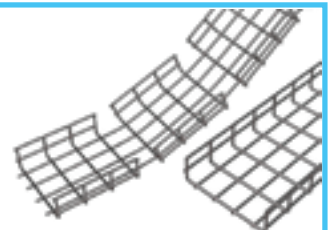
### Cable Ladders (Welded & Swaged)

Cable Ladders of different side heights are available upon request.



### Basket Trays & Accessories

SFSP's Basket Tray systems make connections fast and simple with limited need for tools. Its design allows for continuous airflow, and prevents heating up of cables. SFSP's Basket Tray comes in a full range of sizes and is made with high-strength welded steel wires.



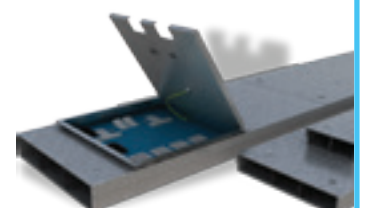
### Cable Trunkings

Cable Trunkings and Accessories are offered in a comprehensive range. Mill galvanized, hot-dip galvanized, and powder coated are the various finishes produced in our factories.



### Underfloor Trunking

Underfloor Trunking Systems solutions incorporate a range of products for the distribution of power and data services, it is a coordinated set of containments that protect, segregate, contain, and route cables within a given environment.



### Cable Management Support Systems

Cable Support Systems are well designed to provide necessary support for cable trays, cable ladders and trunkings. Cable supports are manufactured according to common standards from high quality raw materials.



### C-Channel Strut Systems

SFSP's Metal Framing Systems provide an economical solution for electrical, mechanical and industrial supports with a wide variety of applications in the construction industry.

Applications: - Pipe and Conduit Supports - Tunnel Pipe Stanchions - Racks and Shelvings - Wall Framings.



### Expanded Metals, Plasterers' Beads

Expanded Metals help the formation of joints, protection of corners and resistance against cracks, chips and impact damage.

### Block Ladder Reinforcement

SFSP ladder and truss types are used for the reinforcement of brick and block masonry to give improved tensile strength to walls subjected to lateral loading e.g. wind and seismic. SFSP block reinforcements reduces the risk of cracking either at stress concentration around opening.

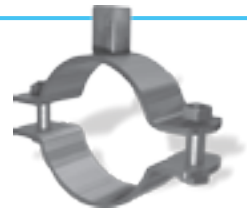
### Steel Lintels & Block Work Accessories

Steel Lintels provide a combination of strength and light weight, resulting in efficient load bearing performance and increased productivity on site. They are characterized by their ease of installation in addition to time as well as money saving.



### Pipe Clamps & Hangers

Pipe Clamps and Hangers from SFSP used in the support of pipes and equipments are manufactured according to the highest standards of fabrication. A diversified choice of Pipe Hangers, Pipe Clamps, EMT Straps, Omega Clamps, Beam Clamps, J and U-Bolts and Threaded Accessories.



### Marble & Granite Fixings

Stangle Cladding Fixation includes design, calculation and production of several types of mechanical fixings and accessories used for cladding purposes. Stainless and galvanized steel are among the various materials used in the fabrication.



### Dry Wall & Ceiling Profiles

SFSP provides a complete product range for dry wall and ceiling constructions. Studs, Runners, Furring Channels, Ceiling Channels and Wall Angles are among the range of products produced to service the dry wall installers.



### Garbage & Linen Chutes

Chutes from SFSP are very convenient, simple and low cost method of controlling and disposing of refuse and linen. Chutes meet the most stringent requirements of environmental health and safety. Chutes are used as original equipment in new buildings, such as : Hotels, Hospitals, High Rises and Residential Towers.





SFSP Products are solely distributed by UNITECH for Building and Construction Materials

All Products Manufactured by SFSP are Solely Distributed by SFSP Sister Companies in the Following Countries

## KSA

**Isam Kabbani & Partners for Building and Construction Materials Co., Ltd.**

شركة عصام قباني وشركاه لمواد الإنشاء والتعمير المحدودة

## BAHRAIN

**Isam Kabbani Trading Est.**

مؤسسة عصام قباني التجارية

## UAE

**Issam Kabbani Trading Est.**

مؤسسة عصام قباني للتجارة

## KUWAIT

**Hassan Kabbani for General Contracting Est.**

مؤسسة حسان قباني للمقاولات العامة للمباني

## OMAN

**Isam Kabbani & Partners Trading Co.**

شركة عصام قباني وشركاه للتجارة

## EGYPT

**UNITECH Egypt for Building Materials**

شركة يونيتك مصر لمواد البناء

## JORDAN

**Jordan Build Co. for Building & Construction Materials**

شركة بناء الأردن لمواد الإنشاء والتعمير والكهرباء

## LEBANON

**UNITECH ME s.a.r.l**

شركة يونيتك ميدل إيست ش.م.م

## SFSP CUSTOMER SERVICE CALL CENTER

## KSA

+966 13 8590097, Ext. 3214

## UAE

+971 4 8181925, Ext. 4269





## IKK

### Group of Companies

The IKK Group is a major business institution, serving most of the Arab World in the industrial, construction and trading fields, as well as in specialized maintenance and services.

Today, the IKK Group of Companies is a pioneer in waterproofing, weatherproofing, building material supplies, UPVC and CPVC and high density polyethylene pipes and fittings and several other products for the construction industry.

The Group is also represented in the sanitary products, steel production, kitchen manufacturing, telecommunications, food, decoration, re-insurance and real estate business domain.

Composed of 60 companies, the IKK Group operates through almost 200 divisions, branches and outlets; it is spread over 12 countries, covering all major cities in the region and employing around 13,000 employees.

**Our vision** is to maintain and improve our leading position as a contractor whose reputation is built on the ability to completely satisfy customers by providing high quality services. As specialists in their respective fields, our teams of professionals are dedicated to a standard of excellence for quality and performance, through continuous development, which will set standards in our industry.

We are simply providing solutions for a future of success.

**Our mission** is to provide our part of the Arab World with local and reliable services in a variety of sectors and products.

To create employment to thousands of personnel and in-house training for hundreds of young Arab graduates in crucial sectors to the benefit of the IKK Group, the graduates themselves and their own communities.

To set a good example of our basic business philosophy: "Hire well, train well, pay well and treat well."

## UNITECH

### ISAM KABBANI & PARTNERS FOR BUILDING & CONSTRUCTION MATERIALS

Isam Kabbani & Partners for buildings & construction materials co. Ltd (UNITECH) which is part of the IKK group of companies is recognized and acknowledged for the quality and reliability of its products and services as well as for the commitment, professionalism and experience of its employees.

Isam Kabbani & partners for buildings & construction materials co. Ltd (UNITECH) core values are to offer value products and services to its clients, to work closely with them in a lasting business partnership that provides an outstanding performance.

A partnership based on trust, harmony, and a hard to beat services and solutions.

Our Factories have acquired, in addition to ISO 9001:2008 Quality Management System, the ISO 14001:2004 Environmental Management System.

Our care for the environment has been translated via Isam Kabbani & partners for buildings & construction materials co. Ltd (UNITECH)'s membership in the US Green Building Council as a Golden Member.

# PLASTER BEADS

## SFSP manufactures Plaster Beads in accordance with:

- BS EN 13658-1:2005 For Internal Plastering
- BS EN 13658-2:2005 For External Rendering

## Relevant Standards

- BS EN 13914-1:2016 For External Rendering
- BS EN 13914-2:2016 For Internal Rendering
- BS 6452:Part 1:1984
- BS 5262:1991
- BS 8212:1995

## Finishing

- Galvanized Steel according to BS EN 10346:2015
- Stainless Steel according to BS EN 10088-2:2014

### • For interior applications:

Galvanized Steel according to BS EN 10327 superseded by BS EN 10346:2009, zinc coated on both sides.

### • For exterior applications and humid environment:

Austenitic stainless steel according to BS EN 10088- Mat.No.1.4301

## TECHNICAL SPECIFICATIONS

### METAL BEADS

#### Relevant Standards:

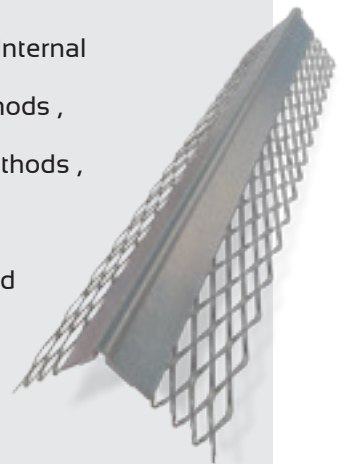
- BS EN 13914- 2 : 2005 Design , Preparation and Application of External Rendering and Internal Plastering
- BS EN 13658-1 : 2005 Metal Lath and Beads Definitions , Requirements and Test Methods , Internal Plastering Supersedes BS 1369-1 :1987 and BS 6452-1 : 1984
- BS EN 13658 2 : 2005 Metal Lath and Beads Definitions , Requirements and Test Methods , External Plastering Supersedes BS 1369-2 :1987 and BS 6452-2 : 1984
- ASTM C841 Standard Specification for Installation of Interior Lathing and Furring
- ASTM C847 - Standard Specification for Metal Lath
- ASTM C1063 Standard Specification for Installation of Lathing and Furring for Portland Cement Based Plaster
- International Building Code , ( IBC ) Chapter 25
- International Residential Code , ( IRC ) Chapter 7

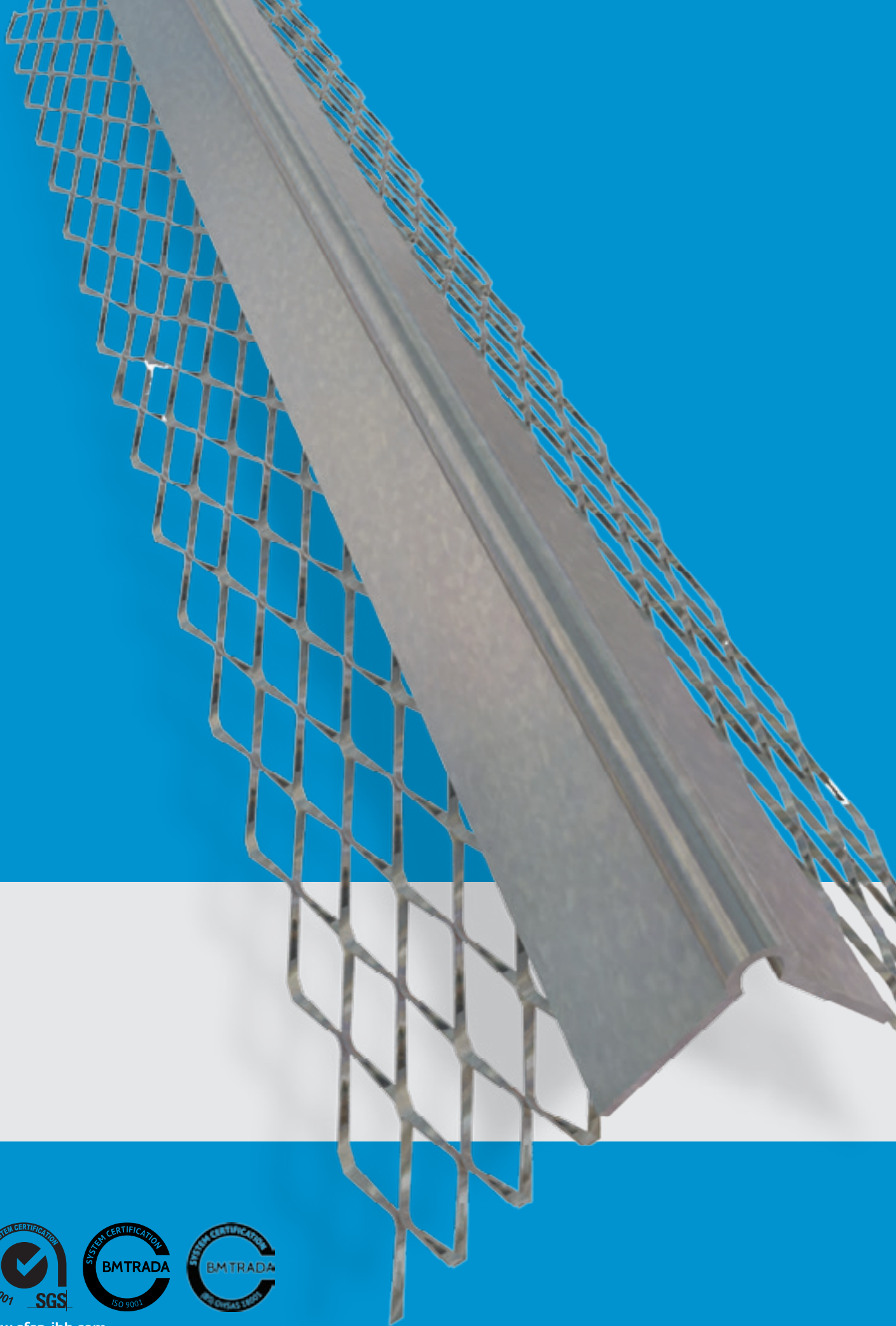
### GALVANIZED STEEL:

- BS EN 10346:2009 (formerly BS EN 10142: 1991) ASTM A 653/A 653M

### STAINLESS STEEL:

- BS EN 10088-2:2005 (which was directly equivalent to formerly BS 1449:Part 2:1983
- ASTM A240/A240M





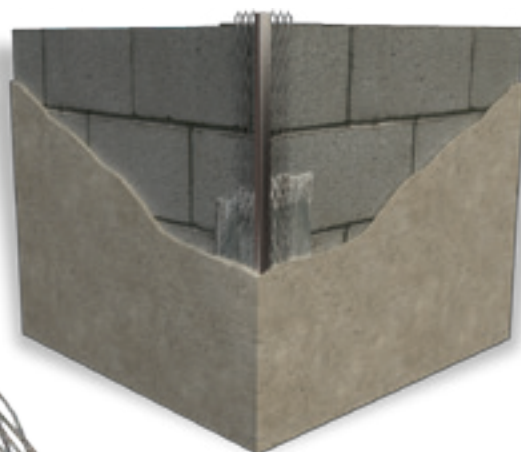
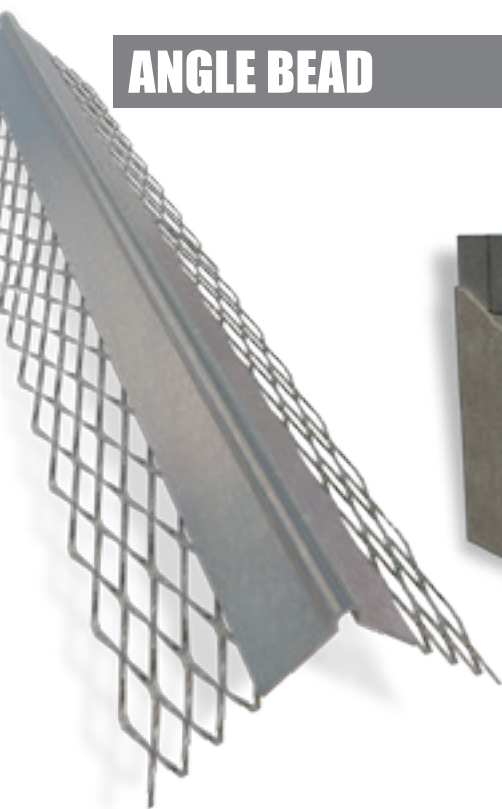
[www.sfsp-ikk.com](http://www.sfsp-ikk.com)



# PLASTER BEADS



# ANGLE BEAD



Angle beads provide with its solid metal nose a straight corner. Expanded diamond mesh wings allow for keying the plaster right up to the nose of the bead. It is designed to protect the corners.

The flanges can be easily fixed over irregular, uneven surfaces. Guarantees a perfect bond and provides better effective reinforcement at corners where it is mostly needed.

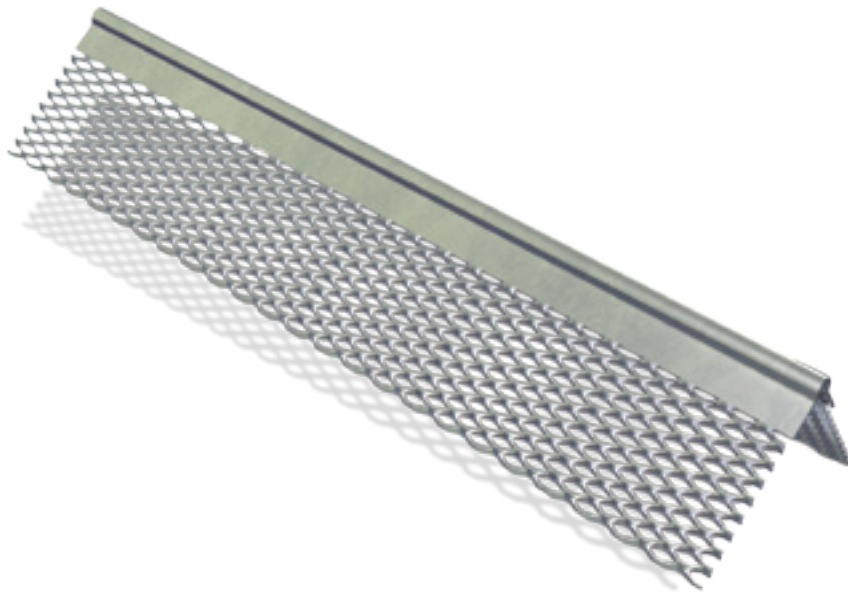
Angle bead is recommended for a greater corner protection and a precise straight line. Available in galvanized finish for internal use, and in stainless steel for external use.

Item Number	Description	Length of wings (mm)	Plaster Depth (mm)	Length (mm)	Material
SMAB_F_00054403	Angle Bead	50	12 - 19	2700	GI (Galvanized Steel)
SMAB_F_00054405	Angle Bead	50	12 - 19	2850	GI (Galvanized Steel)
SMAB_F_00054411	Angle Bead	50	12 - 19	3000	GI (Galvanized Steel)
SMAB_F_00054439	Angle Bead	65	12 - 19	2700	GI (Galvanized Steel)
SMAB_F_00054451	Angle Bead	65	12 - 19	2850	GI (Galvanized Steel)
SMAB_F_00054437	Angle Bead	65	19	3000	GI (Galvanized Steel)
SMAB_F_00054463	Angle Bead	70	19	2700	GI (Galvanized Steel)
SMAB_F_00054467	Angle Bead	70	19	2850	GI (Galvanized Steel)
SMAB_F_00054459	Angle Bead	70	19	3000	GI (Galvanized Steel)
SMAB_F_00220409	Angle Bead	75	19	2700	GI (Galvanized Steel)
SMAB_F_00136231	Angle Bead	75	19	2850	GI (Galvanized Steel)
SMAB_F_00054483	Angle Bead	75	19	3000	GI (Galvanized Steel)

Item Number	Description	Length of wings (mm)	Plaster Depth (mm)	Length (mm)	Material
SMAB_F_00054523	Angle Bead	50	12 - 19	2700	SS A4 (Stainless Steel)
SMAB_F_00054525	Angle Bead	50	12 - 19	2850	SS A4 (Stainless Steel)
SMAB_F_00057795	Angle Bead	50	12 - 19	3000	SS A4 (Stainless Steel)
SMAB_F_00076979	Angle Bead	65	12 - 19	2700	SS A4 (Stainless Steel)
SMAB_F_00054525	Angle Bead	65	12 - 19	2850	SS A4 (Stainless Steel)
SMAB_F_00054567	Angle Bead	65	19	3000	SS A4 (Stainless Steel)
SMAB_F_00081501	Angle Bead	70	19	2700	SS A4 (Stainless Steel)
SMAB_F_00054569	Angle Bead	70	19	3000	SS A4 (Stainless Steel)
SMAB_F_00054573	Angle Bead	75	19	3000	SS A4 (Stainless Steel)

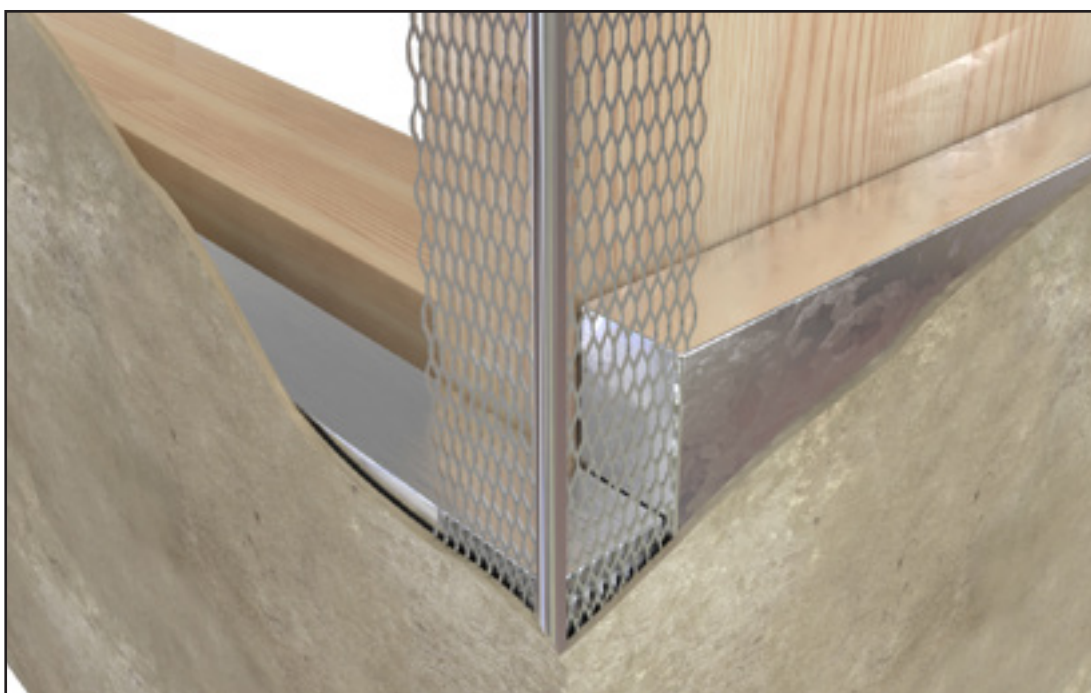
## MICRO ANGLE BEAD

Micro angle beads are designed for thin coat plaster and are used at corners for protection. Micro angle beads are popular thin coat beads with fine mesh wings. Fix either by galvanized nails or using plaster dabs.



Item Number	Description	Wing Width (mm)	Length (mm)	Material
SMMC_F_00054489	Micro Angle Bead	40	2000	GI (Galvanized Steel)
SMMC_F_00054491	Micro Angle Bead	40	3000	GI (Galvanized Steel)

Item Number	Description	Wing Width (mm)	Length (mm)	Material
SSMMC_F_00054577	Micro Angle Bead	40	3000	SS A4 (Stainless Steel)



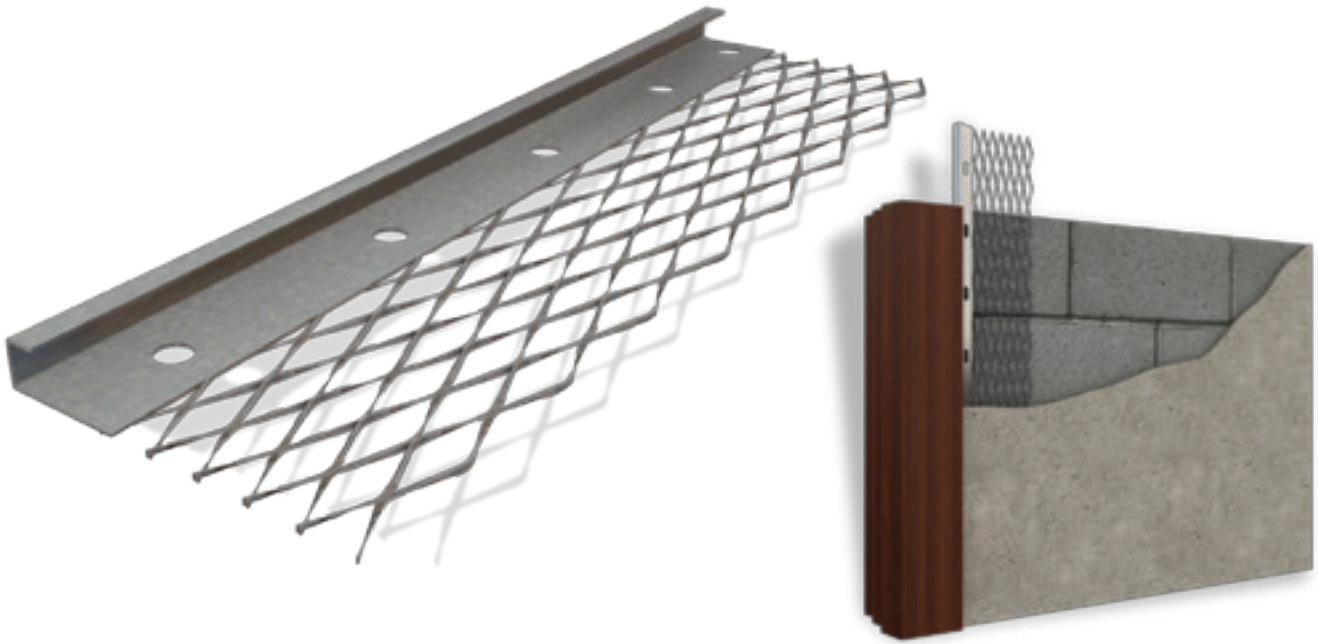
# PLASTER STOP BEAD

Plaster stop bead provides a straight accurate line, it is used to reinforce the plaster or render on its edge. Plaster stop bead is designed as a universal plaster stop used at wall ends, door and window openings to make a neat, flush frame.

Plaster stop bead protects the edge from damage and helps corner shrinkage cracks. Plaster stop bead can be used for many different applications and can also be less expensive compared to other construction methods.

The beads are designed with a ridge of nail holes to provide easy installation.

Plaster stop beads can be used in all types of buildings and constructions and all types of cement plastering works. Plaster stop beads help in improving the quality of the building with reference to the abutments of the wall surfaces to other dissimilar surfaces. Plaster stop beads are used between wall surfaces and abutment of doors and window frames and in places wherever the plaster ends.



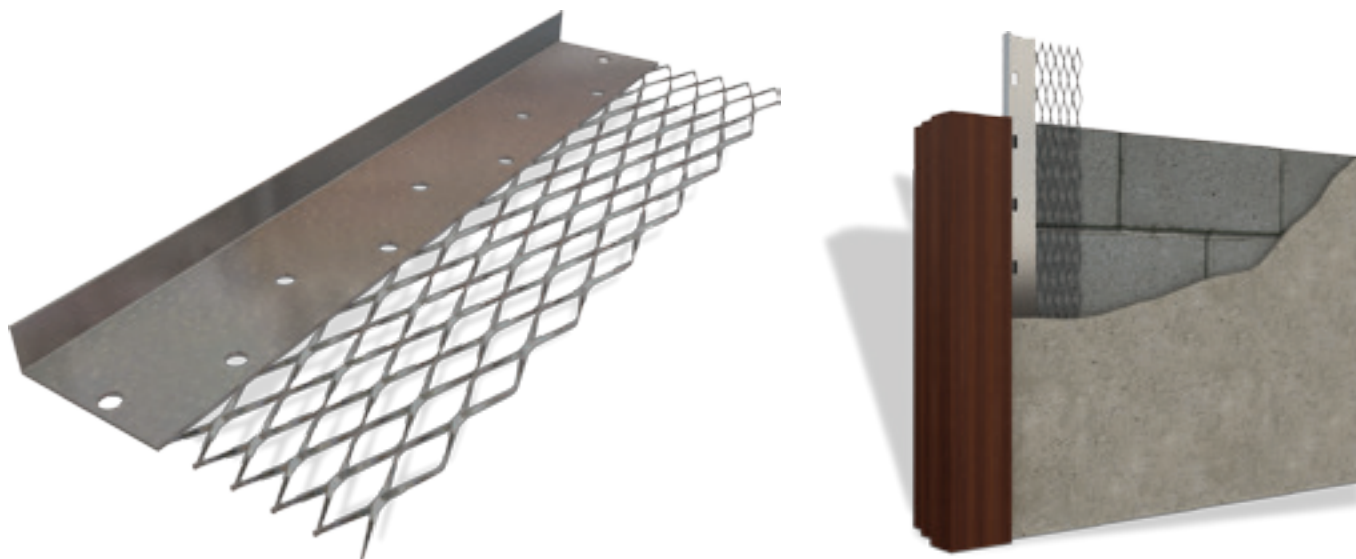
Item Number	Description	Plaster Depth (mm)	Length (mm)	Material
SMPS_F_00182673	Plaster Stop Bead	10	2850	GI (Galvanized Steel)
SMPS_F_00067475	Plaster Stop Bead	10	3000	GI (Galvanized Steel)
SMPS_F_00056943	Plaster Stop Bead	13	2700	GI (Galvanized Steel)
SMPS_F_00054495	Plaster Stop Bead	13	3000	GI (Galvanized Steel)
SMPS_F_00074207	Plaster Stop Bead	16	2700	GI (Galvanized Steel)
SMPS_F_00174499	Plaster Stop Bead	16	3000	GI (Galvanized Steel)
SMPS_F_00179899	Plaster Stop Bead	19	2850	GI (Galvanized Steel)
SMPS_F_00059997	Plaster Stop Bead	19	3000	GI (Galvanized Steel)

Item Number	Description	Plaster Depth (mm)	Length (mm)	Material
SMPS_F_00101505	Plaster Stop Bead	13	2700	SS A4 (Stainless Steel)
SMPS_F_00054579	Plaster Stop Bead	13	3000	SS A4 (Stainless Steel)
SMPS_F_00160133	Plaster Stop Bead	16	2850	SS A4 (Stainless Steel)
SMPS_F_00141547	Plaster Stop Bead	16	3000	SS A4 (Stainless Steel)
SMPS_F_00065423	Plaster Stop Bead	19	3000	SS A4 (Stainless Steel)

# MICRO PLASTER STOP BEAD

Micro plaster stops are designed for thin coat edge protection at openings. They provide abutment of plastered areas of other wall finishes. Micro plaster stops provide efficient keying and excellent finishes.

Micro plaster stops make neat, flush frames for windows and other openings.



Item Number	Description	Plaster Depth (mm)	Length (mm)	Material
SM-3850-C-GIPS032700	Micro Plaster Stop Bead	3	2700	GI (Galvanized Steel)
SM-3860-C-GIPS032850	Micro Plaster Stop Bead	3	2850	GI (Galvanized Steel)
SM-3870-C-GIPS032900	Micro Plaster Stop Bead	3	2900	GI (Galvanized Steel)
SM-3880-C-GIPS033000	Micro Plaster Stop Bead	3	3000	GI (Galvanized Steel)
SM-4050-C-GIPS062700	Micro Plaster Stop Bead	6	2700	GI (Galvanized Steel)
SM-4060-C-GIPS062850	Micro Plaster Stop Bead	6	2850	GI (Galvanized Steel)
SM-4070-C-GIPS062900	Micro Plaster Stop Bead	6	2900	GI (Galvanized Steel)
SM-4080-C-GIPS063000	Micro Plaster Stop Bead	6	3000	GI (Galvanized Steel)

Item Number	Description	Plaster Depth (mm)	Length (mm)	Material
SM-4450-C-SSPS032700	Micro Plaster Stop Bead	3	2700	SS A4 (Stainless Steel)
SM-4460-C-SSPS032850	Micro Plaster Stop Bead	3	2850	SS A4 (Stainless Steel)
SM-4470-C-SSPS032900	Micro Plaster Stop Bead	3	2900	SS A4 (Stainless Steel)
SM-4480-C-SSPS033000	Micro Plaster Stop Bead	3	3000	SS A4 (Stainless Steel)
SM-4750-C-SSPS062700	Micro Plaster Stop Bead	6	2700	SS A4 (Stainless Steel)
SM-4760-C-SSPS062850	Micro Plaster Stop Bead	6	2850	SS A4 (Stainless Steel)
SM-4770-C-SSPS062900	Micro Plaster Stop Bead	6	2900	SS A4 (Stainless Steel)
SM-4780-C-SSPS063000	Micro Plaster Stop Bead	6	3000	SS A4 (Stainless Steel)



# CONTROL JOINT BEAD

Designed to minimize the plaster cracking and to allow movement in the plaster. Control Joint Bead overcomes movement tolerances in plaster Expansion / Control joints provide excellent expansion control for both walls and ceiling and offers positive locking of the stucco to the edge of the joint.

Control joint bead helps reducing stucco separation at the edge of the joint.

They provide for the basic expansion and contraction that can be expected in the stucco membrane, such as initial shrinkage during curing and minor thermal expansion and contraction.

Available in galvanized finish for internal use and in stainless steel for external use.



Item Number	Description	Plaster Depth (mm)	Length (mm)	Material
SMAB_F_00098581	Control Joint Bead	13	3000	GI (Galvanized Steel)
SMAB_F_00260665	Control Joint Bead	16	3000	GI (Galvanized Steel)
SMAB_F_00098811	Control Joint Bead	19	3000	GI (Galvanized Steel)

Item Number	Description	Plaster Depth (mm)	Length (mm)	Material
SMAB_F_00062559	Control Joint Bead	13	3000	SS A4 (Stainless Steel)
SMAB_F_00260673	Control Joint Bead	16	3000	SS A4 (Stainless Steel)
SMAB_F_00065455	Control Joint Bead	19	3000	SS A4 (Stainless Steel)

## ARCHITRAVE BEAD

Mainly used for decorative purposes to give a channel gap or a shadow between different walls finishes.

Item Number	Description	Plaster Depth (mm)	Length (mm)	Material
SMAB_F_00223703	Architrave Bead	10	3000	GI (Galvanized Steel)
SMPS_F_00056943	Architrave Bead	13	3000	GI (Galvanized Steel)
SMPS_F_00074207	Architrave Bead	16	3000	GI (Galvanized Steel)
SMAB_F_00158719	Architrave Bead	19	3000	GI (Galvanized Steel)

Item Number	Description	Plaster Depth (mm)	Length (mm)	Material
SMAB_F_00223701	Architrave Bead	13	3000	SS A4 (Stainless Steel)
SSMPS_F_00101505	Architrave Bead	13	3000	SS A4 (Stainless Steel)
SSMPS_F_00059993	Architrave Bead	16	3000	SS A4 (Stainless Steel)
SMAB_F_00174501	Architrave Bead	19	3000	SS A4 (Stainless Steel)

## ARCHITRAVE BEAD WITHOUT FLANGE

Mainly used for decorative purposes to give a shadow between different walls finishes.

Item Number	Description	Plaster Depth (mm)	Length (mm)	Material
SMAB_F_00223703	Architrave Bead	10	3000	GI (Galvanized Steel)
SMPS_F_00056943	Architrave Bead	13	3000	GI (Galvanized Steel)
SMPS_F_00074207	Architrave Bead	16	3000	GI (Galvanized Steel)
SMAB_F_00158719	Architrave Bead	19	3000	GI (Galvanized Steel)

Item Number	Description	Plaster Depth (mm)	Length (mm)	Material
SMAB_F_00223701	Architrave Bead	13	3000	SS A4 (Stainless Steel)
SMAB_F_00061617	Architrave Bead	13	3000	SS A4 (Stainless Steel)
SSMPS_F_00059993	Architrave Bead	16	3000	SS A4 (Stainless Steel)
SMAB_F_00174501	Architrave Bead	19	3000	SS A4 (Stainless Steel)

# MOVEMENT BEAD

Movement Beads are used to relieve the stress and strain in large plaster areas of wall and ceiling stucco areas and to allow for movement between adjoining surface finishes.

Movement Beads overcome movement tolerance in plaster and render finishes and minimize the cracking in plaster. Movement Beads act as stop barriers when a change in finish is required.

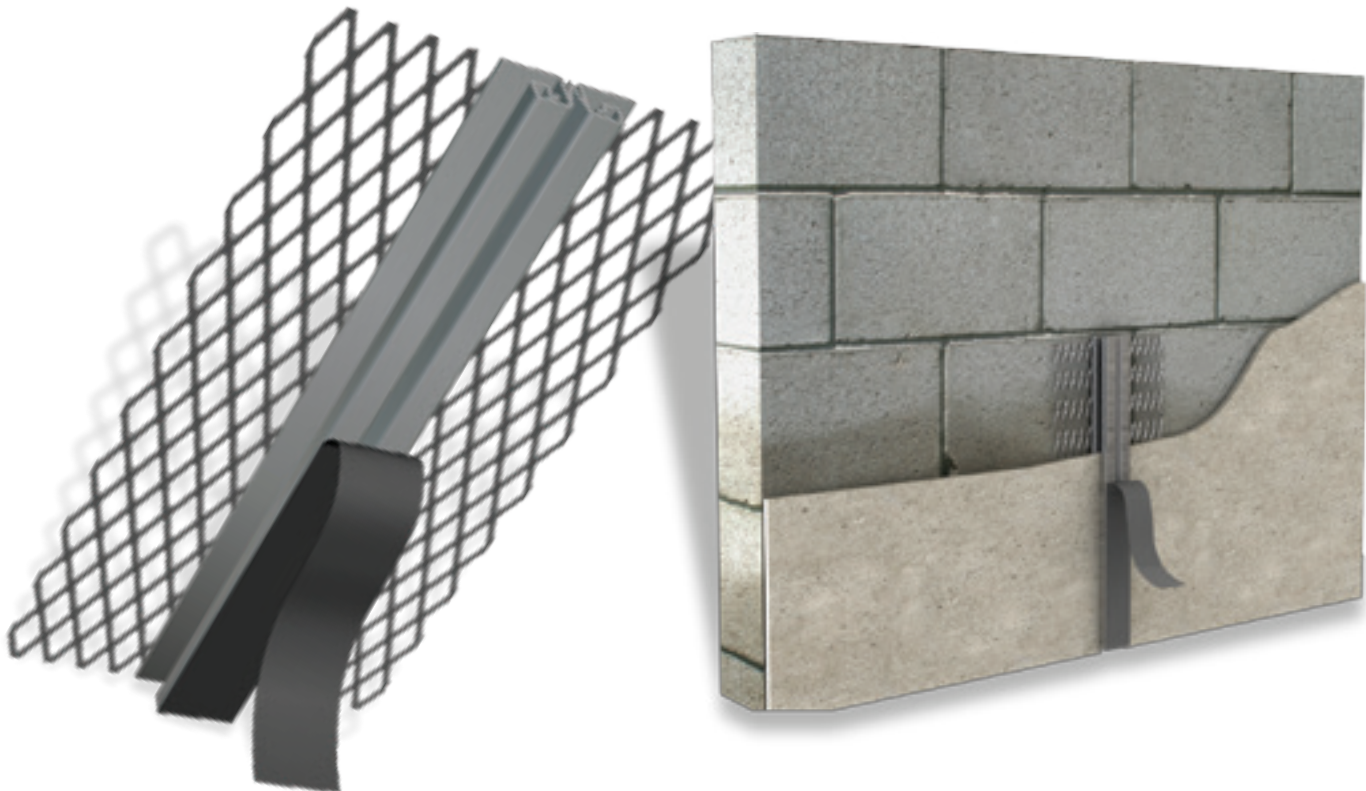
The purpose of the movement joint is to assure the proper plaster or stucco thickness also.

Movement Beads are used in all types of building construction wherever expansion joints are present, for all types and kinds of bricks and reinforced concrete.

It helps in improving the quality of the building with respect to the openings that are invariably created because of the space provided for expansion.

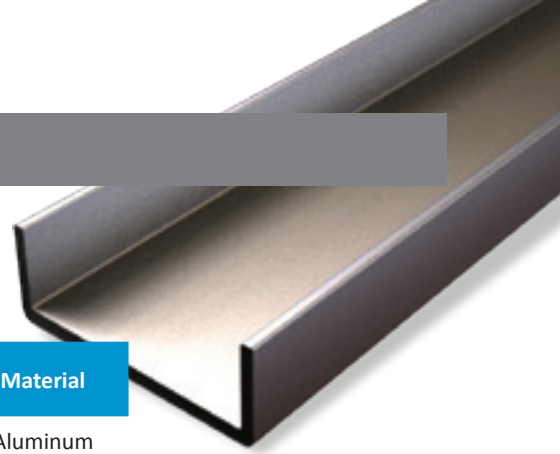
Item Number	Description	Plaster Depth (mm)	Length (mm)	Material
SMPS_F_00267609	Movement Bead	10	3000	GI (Galvanized Steel)
SMPS_F_00267607	Movement Bead	13	3000	GI (Galvanized Steel)
SMPS_F_00213239	Movement Bead	16	3000	GI (Galvanized Steel)
SMPS_F_00207927	Movement Bead	19	3000	GI (Galvanized Steel)

Item Number	Description	Plaster Depth (mm)	Length (mm)	Material
SMPS_F_00267613	Movement Bead	10	3000	SS A4 (Stainless Steel)
SMPS_F_00267611	Movement Bead	13	3000	SS A4 (Stainless Steel)
SMPS_F_00267615	Movement Bead	16	3000	SS A4 (Stainless Steel)
SMPS_F_00098539	Movement Bead	19	3000	SS A4 (Stainless Steel)



## ALUMINUM CHANNEL

The Aluminum Channel is a versatile product, commonly used for groove making; a decorative purpose for plaster finishes.



Item Number	Description	Size (mm)	Length (mm)	Thickness (mm)	Material
SCUC_F_00260675	Aluminum Channel	8x8x8	6000	1.5	Aluminum
SSTFP_F_00142393	Aluminum Channel	10x10x10	6000	1.5	Aluminum
SSTFP_F_00142411	Aluminum Channel	10x20x10	6000	1.5	Aluminum
SSTFP_F_00142423	Aluminum Channel	12.5x23x12.5	6000	1.5	Aluminum
SCUC_F_00260681	Aluminum Channel	15x15x15	6000	1.5	Aluminum
SCUC_F_00260687	Aluminum Channel	15x20x15	6000	1.5	Aluminum
SCUC_F_00260693	Aluminum Channel	20x20x20	6000	1.5	Aluminum
SCUC_F_00260699	Aluminum Channel	25x25x25	6000	1.5	Aluminum

## CORNER MESH

Corner Mesh lathes are used to prevent cracking in the plaster of the corner, and by protecting the inner corner against various factors. Corner Mesh lathes helps the formation of proper plastering.



Item Number	Description	Length of wings (mm)	Length (mm)	Material
SMCL_F_00058335	Corner Mesh	50	3000	GI (Galvanized Steel)
SMCL_F_00058513	Corner Mesh	75	3000	GI (Galvanized Steel)
SMCL_F_00058337	Corner Mesh	100	3000	GI (Galvanized Steel)

Item Number	Description	Length of wings (mm)	Length (mm)	Material
SMCL_F_00076903	Corner Mesh	50	3000	SS A4 (Stainless Steel)
SMCL_F_00091325	Corner Mesh	75	3000	SS A4 (Stainless Steel)
SMCL_F_00058339	Corner Mesh	100	3000	SS A4 (Stainless Steel)



## STRIP MESH

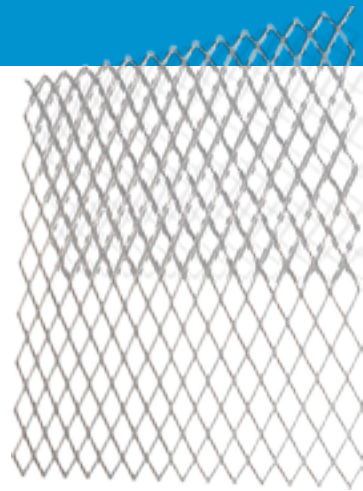
Strip Mesh Lathes are used along stress lines where cracking is likely. Strip mesh provides reinforcement to the plaster to prevent crack over joints of different materials.



Item Number	Description	Strip Mesh Width (mm)	Length (mm)	Weight (kg/m <sup>2</sup> )	Material
SMCL_F_00094049	Strip Mesh	152	2440	0.75	GI (Galvanized Steel)
SMCL_F_00083779	Strip Mesh	152	2440	0.80	GI (Galvanized Steel)
SMCL_F_00094047	Strip Mesh	102	2440	0.75	GI (Galvanized Steel)
SMCL_F_00083777	Strip Mesh	102	2440	0.80	GI (Galvanized Steel)
SMCL_F_00081503	Strip Mesh	102	2440	1.91	GI (Galvanized Steel)
SMCL_F_00101119	Strip Mesh	152	2500	1.92	GI (Galvanized Steel)
SMCL_F_00095555	Strip Mesh	152	3000	1.10	GI (Galvanized Steel)
SMCL_F_00057853	Strip Mesh	203	2440	0.79	GI (Galvanized Steel)
SMCL_F_00108855	Strip Mesh	203	2440	0.90	GI (Galvanized Steel)
SMCL_F_00065989	Strip Mesh	203	2440	1.10	GI (Galvanized Steel)
SMCL_F_00079613	Strip Mesh	203	2440	1.60	GI (Galvanized Steel)
SMCL_F_00056955	Strip Mesh	203	3000	1.10	GI (Galvanized Steel)

## METAL SHEET LATH

Sheet lath is produced as a key for plaster when applied on suspended ceiling and walls. Sheet lath is used for encasing steel column and beams, assisting in the protection from fire. Sheet lath is used to reinforce plaster between dissimilar areas and at crack-prone areas adjacent to openings.



Item Number	Description	Strip Mesh Width (mm)	Length (mm)	Weight (kg/m <sup>2</sup> )	Material
SMCL_F_00083781	Metal Sheet Lath	500	2440	0.75	GI (Galvanized Steel)
SMCL_F_00066147	Metal Sheet Lath	610	2440	0.9	GI (Galvanized Steel)
SMCL_F_00064001	Metal Sheet Lath	610	2440	1.22	GI (Galvanized Steel)
SMCL_F_00079611	Metal Sheet Lath	610	2440	1.60	GI (Galvanized Steel)
SMCL_F_00094051	Metal Sheet Lath	610	2440	1.85	GI (Galvanized Steel)
SMCL_F_00058517	Metal Sheet Lath	610	2440	1.90	GI (Galvanized Steel)
SMCL_F_00057851	Metal Sheet Lath	610	2440	2.84	GI (Galvanized Steel)
SMCL_F_00065985	Metal Sheet Lath	150	2440	1.10	GI (Galvanized Steel)

# COIL LATH

An easy to fix lath, provides a secure key for plaster and render applications as well as offering effective joint and crack reinforcement.



Item Number	Description	Coil Lath Width (mm)	Length (mm)	Material
SMCL_F_00066105	Coil Lath	102	5000	GI (Galvanized Steel)
SMCL_F_00055117	Coil Lath	152	5000	GI (Galvanized Steel)
SMCL_F_00055119	Coil Lath	203	5000	GI (Galvanized Steel)
SMCL_F_00055145	Coil Lath	305	5000	GI (Galvanized Steel)

Item Number	Description	Coil Lath Width (mm)	Length (mm)	Material
SMCL_F_00058045	Coil Lath	102	5000	SS A4 (Stainless Steel)
SMCL_F_00058047	Coil Lath	152	5000	SS A4 (Stainless Steel)
SMCL_F_00058049	Coil Lath	203	5000	SS A4 (Stainless Steel)
SMCL_F_00058051	Coil Lath	305	5000	SS A4 (Stainless Steel)

## METAL RIB LATH

Rib lathes are expanded metal lathes stiffened with longitudinal ribs. The furring design of the mesh provides efficient background plaster for construction of partition, suspend ceiling and refurbishment works. Rib lath is ideal for refurbishing damaged or old masonry walls, when a key for rendering is not certain due to disintegration or softening of the wall face.

### Installation:

Rib lath should be fixed with apexes of ribs against the wall, edge ribs of sheet nesting into each other should be wire-tied every 150mm and ends fixing should be used at sufficient intervals to hold the lath firmly in position.

### Fixing of Rib lath sheets:

Rib lath is fixed so that the tip of the rib is placed against the supporting background. The rib of the sheet should run at right angles to any supports. Ensure that sheets are overlapped by a minimum of 50mm end to end and by 25mm width ways and that the ribs are nestled together.

### Timber Support:

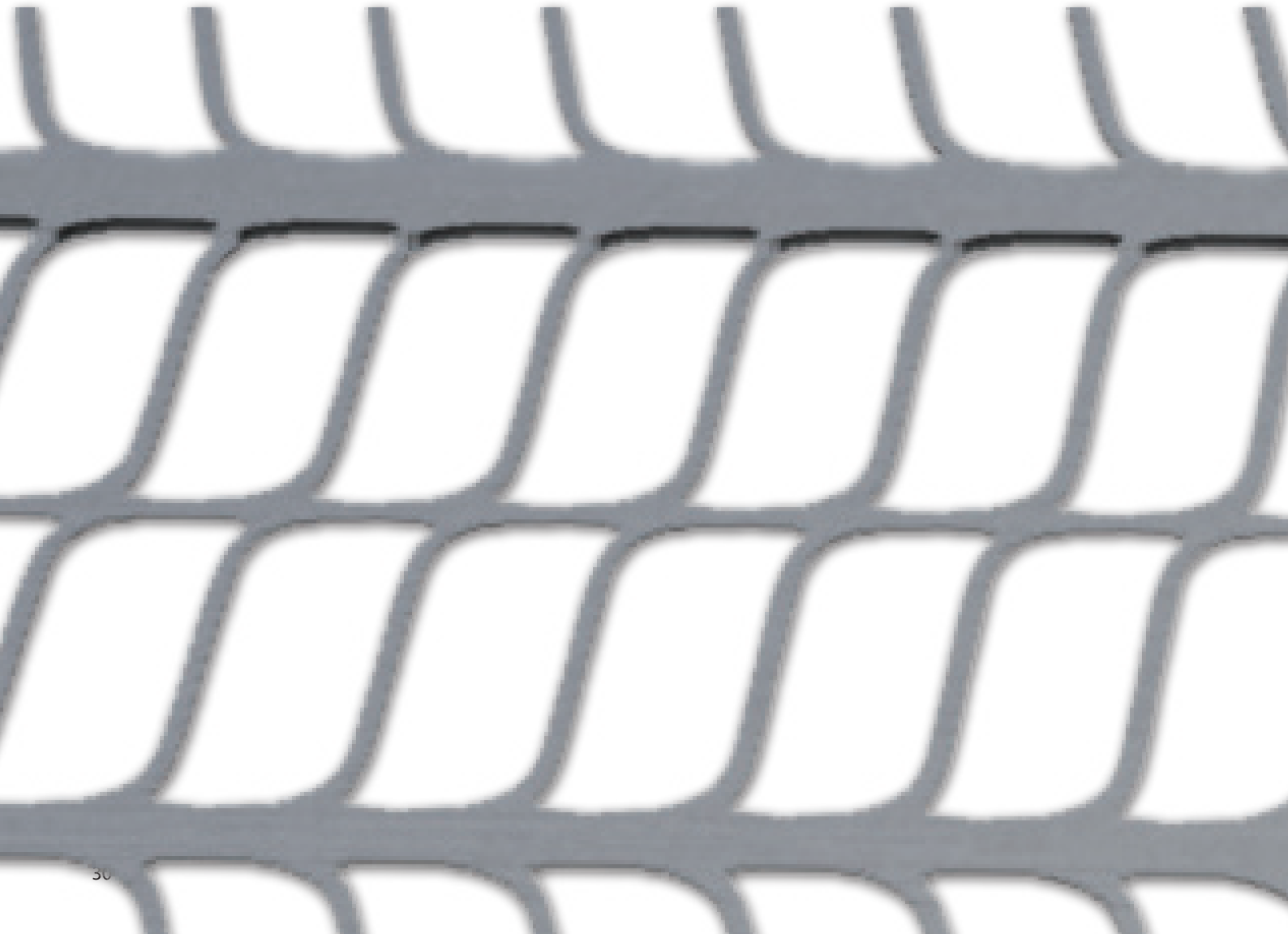
Rib lath is fixed at each rib to timber supports using Plaster nails or staples. Ensure that compatible corrosion resistant fixings are used, i.e. Do not use galvanized fixings for stainless steel.

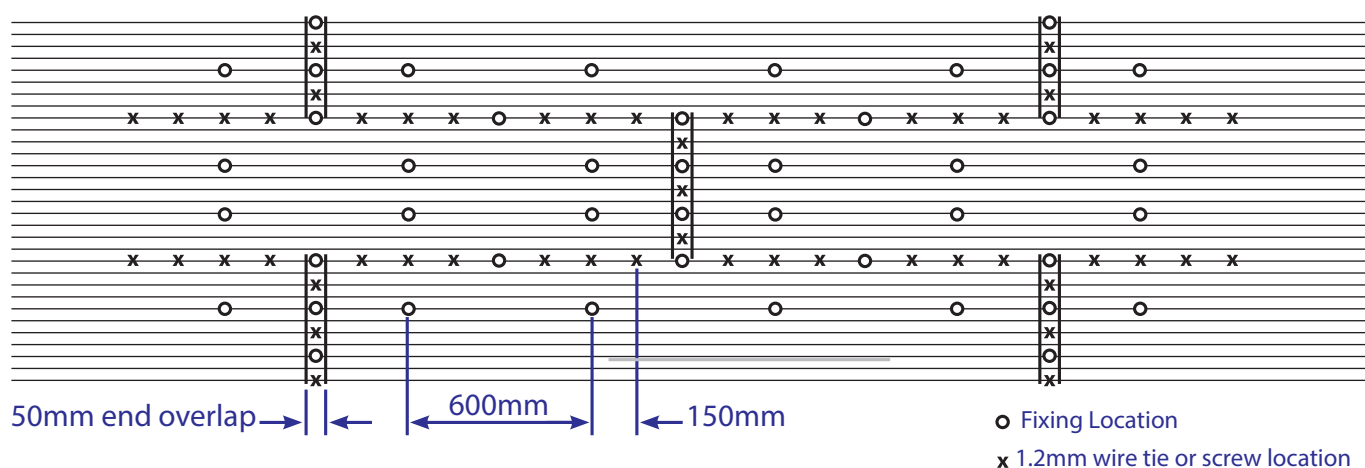
### Metal support:

Rib lath is fixed at each rib to metal support using 1.63mm galvanized or stainless steel tying wire. When joining Rib lath sheets overlap the edge ribs and tie the edges with 1.22mm tying wire at 150mm centers.

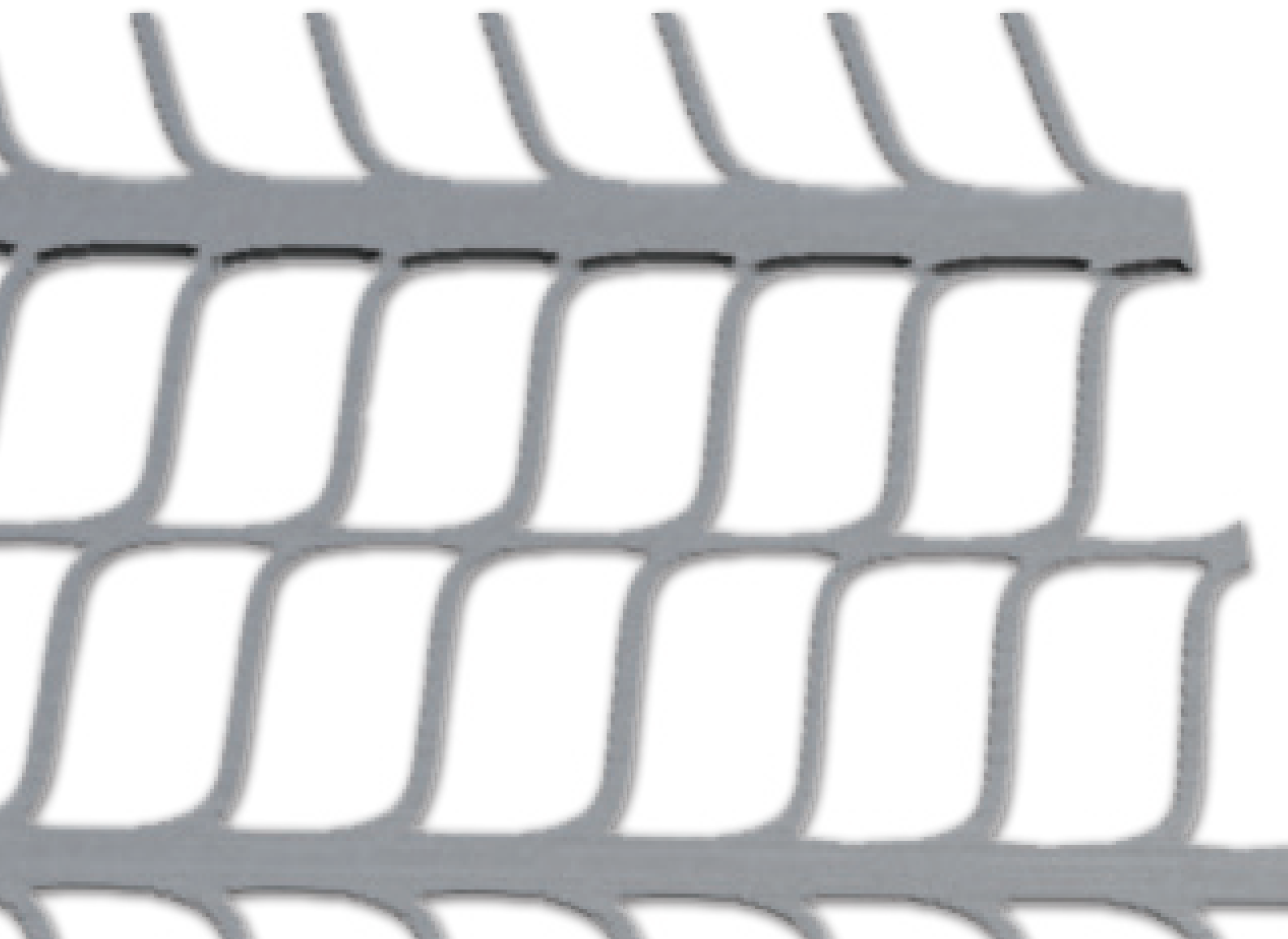
### Solid Background:

Rib lath can be fixed to a solid background using a suitable fixing which holds the ribs firmly against the background. Where sheets are installed vertically, fixings should be positioned through all ribs at 600mm centers to ensure adequate stability.





Reference	Weight (kg/m <sup>2</sup> )	Rib Height (mm)	Size (mm)	Material
RBL 148 - GS	1.48	10	2500 x 700	Galvanized
RBL 184 - GS	1.84	10	2500 x 700	Galvanized
RBL 222 - GS	2.22	10	2500 x 700	Galvanized
RBL 148 - SS	1.48	10	2500 x 700	Stainless Steel
RBL 184 - SS	1.84	10	2500 x 700	Stainless Steel
RBL 222 - SS	2.22	10	2500 x 700	Stainless Steel





# HY-RIB LATH

Hy Rib lath is manufactured from Pre-galvanized steel according to BSEN 10327 as well as stainless steel to BSEN 10088-2 type 1.4301 .

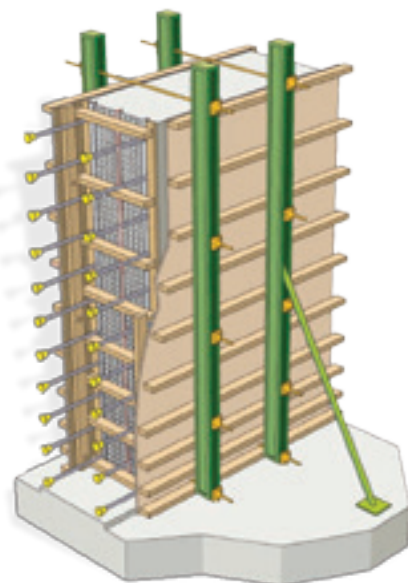
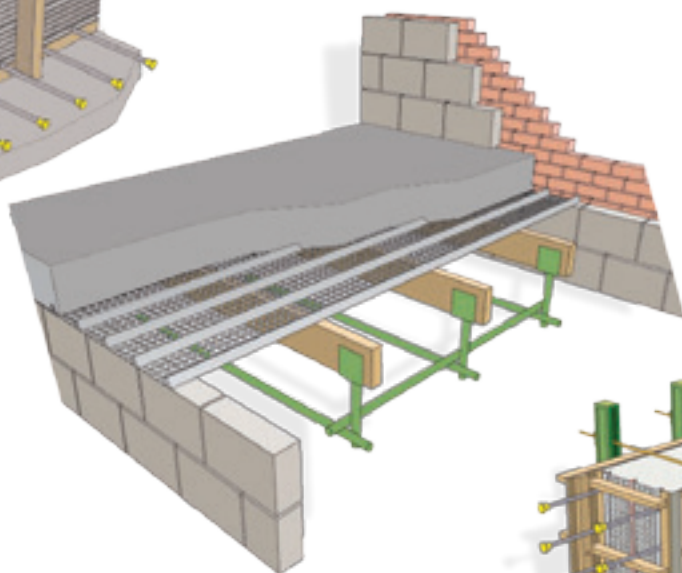
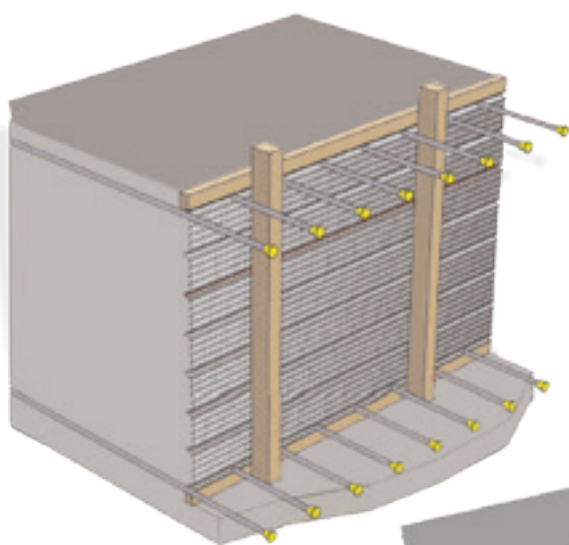
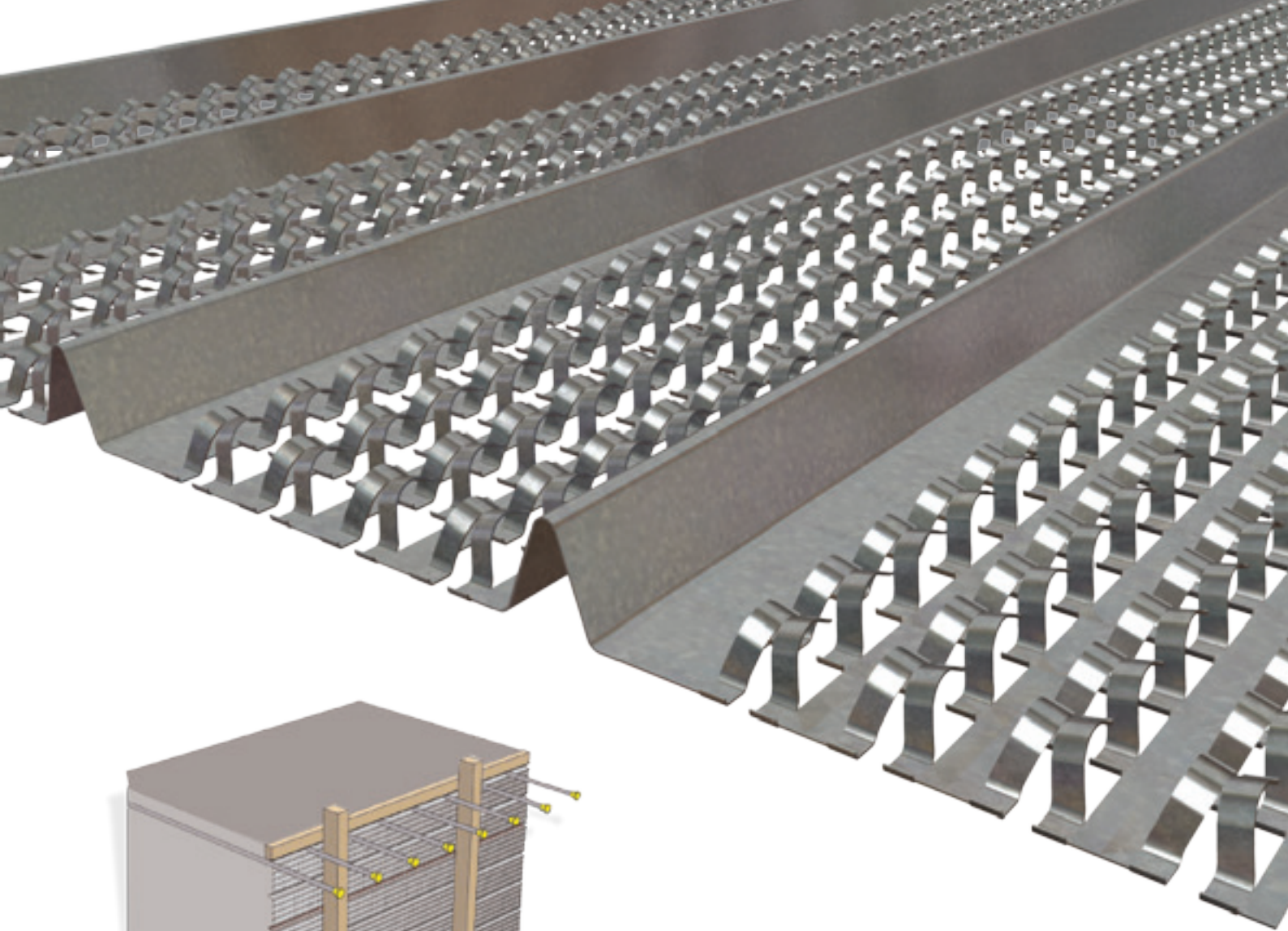
The profile of Hy Rib open mesh in combination with its ribs provide an inherently stiff sheet along its length.

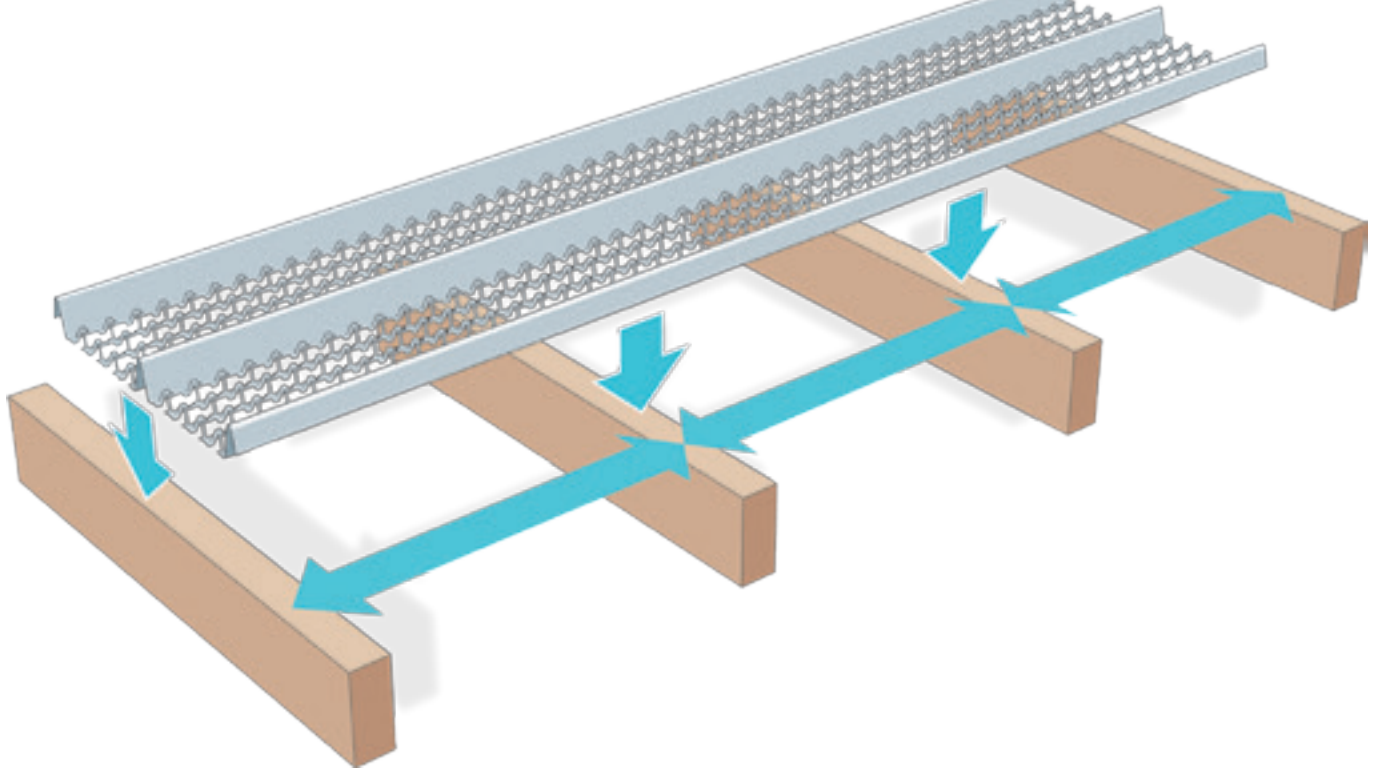
It can be used for flat and curved surfaces.

Depth of joint (D)	Concrete Pressure		Clear Distance Between Supports (A) for Hy-Rib		
	Ciria 108	Assumed for Hy-Rib	2411	2611	2811
mm	kN/m <sup>2</sup>	kN/m <sup>2</sup>	mm	mm	mm
250	6.25	3.2	1250	1025	950
500	12.5	6.3	900	725	675
750	18.75	9.5	725	600	550
1000	25.0	12.7	625	500	475
1250	31.25	15.8	575	450	425
1500	37.5	19.0	525	425	400
2000	50.0	25.3	450	375	350
2500	62.5	31.7	400	325	300
3000	75.0	38.0	375	300	275

Reference	Rib Height (mm)	Material	Length (mm)	Width (mm)	Thickness (mm)	Weight (kg/sqm)
HRB 16 - GS	16	Galvanized	2500	450	0.5	3.25/3.39
HRB 18 - GS	18	Galvanized	2500	450	0.5	4.00/4.86

Thickness (mm)	Width (mm)	Rib Height (mm)	Rib Distance (mm)	Length
0.25	445	13	89	According to Order
0.3	445	13	89	According to Order
0.3	445	20.5	89	According to Order
0.35	445	13	89	According to Order
0.35	445	20.5	89	According to Order
0.4	445	13	89	According to Order
0.4	445	20.5	89	According to Order
0.5	445	20.5	89	According to Order





## Hy Rib: Fields Of Application and Advantage

### Application in concrete construction

- For expansion joints as lost form.
- For flat spread even or moulded construction units as lost form.

### Advantages in concrete construction

- Perfect bonding of the concreting sections without any further treatment of the expansion joint.
- Reduction of the concrete pressure during the concreting process.
- Minimizing of hollow spaces and visual supervision of the process possible.
- Hy Rib reduces the risk of trapped air and voids within the concrete.
- The range of narrower sheet widths improves site productivity and minimizes wastage.

### Application with plastering works

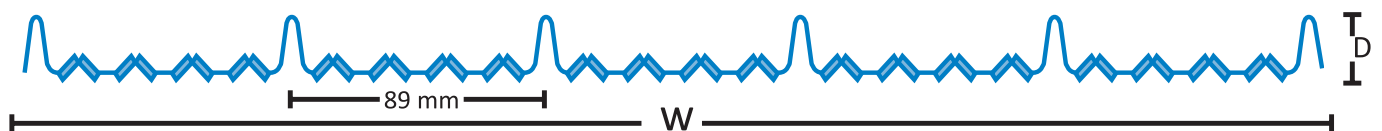
- For wire lattice construction with spans up to 1200mm.

### Advantages with plastering works

- High Stability.
- Especially economical with great spans.

### Hy Rib Processing Placing:

- Ribs must not be damaged or deformed when fastened.
  - The sheets are placed overlapping rib in rib.
  - With concrete works the rib back of the metal mesh always point to the first concreting section.
- The open ribs on the other side ensure reliable bonding to the second concreting section.



Reference	Weight (kg/sqm)	Rib Depth (mm)	Width (mm)	Length (m)	Material
HR 3	3.39	21	445	2 up to 5	Galvanized
HR 4	4.86	21	445	2 up to 5	Galvanized
HR 6	4.86	21	445	2 up to 5	Galvanized

The connection reinforcement (5) required is guided through the metal mesh. For this purpose Hy Rib is incised with sheet shears or RSM special cam shears. Rib cutting in should be avoided if possible.

Joint bands can be mounted is placed between two Hy Rib strips. For this purpose Hy Rib is incised with sheet shears or RSM special cam shears. The stiffening wood beams are provided with cut outs for the joint band.

Hy Rib is nailed to angular or profiled stiffening wood beams (2).

Ribs should not be damaged when they are deformed The closed ribs points towards the first concreting section, since at this point the ribs are exposed to the greater pressure. The ribs are placed cross to the stiffening wood beams.

- Hy Rib requires the same concrete covering as reinforcing steel. In order to maintain the prescribed concrete covering timber rails (3) are nailed to the upper and lower sides of the construction unit as range spacers and to the stiffening woods beams.
- The stiffening wood beams (2) themselves are nailed to the sheathing and held by wooden ledges (4), which are propped against the existing reinforcement.

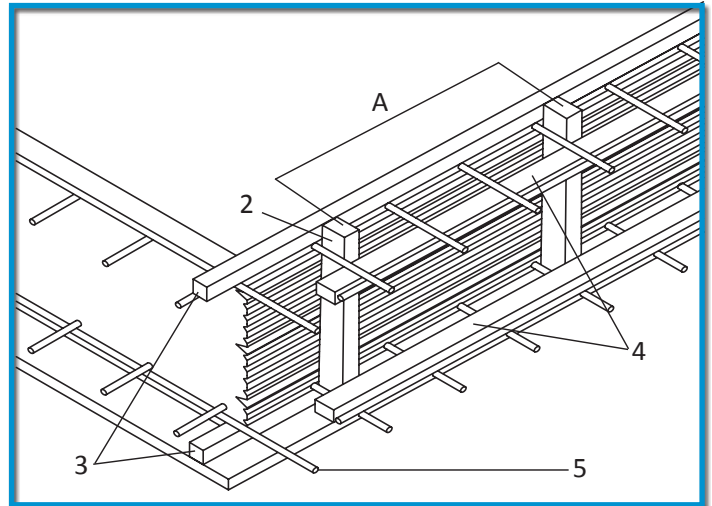


Fig 1 Straight expansion joint with Hy-Rib

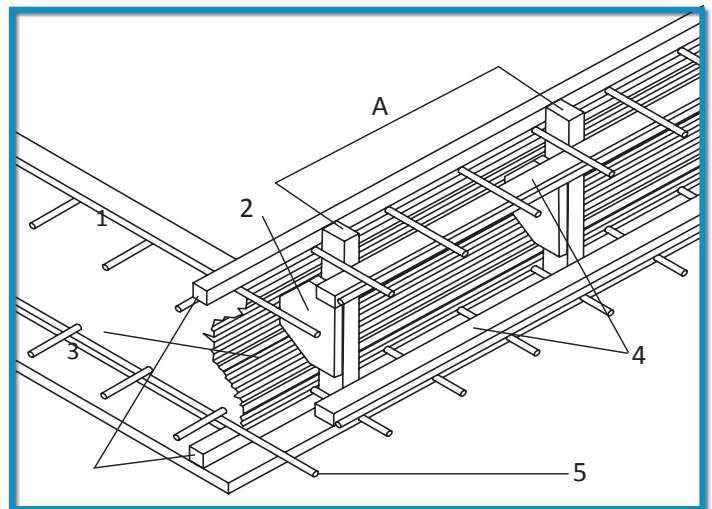


Fig 2 Profiled expansion joint with Hy-Rib

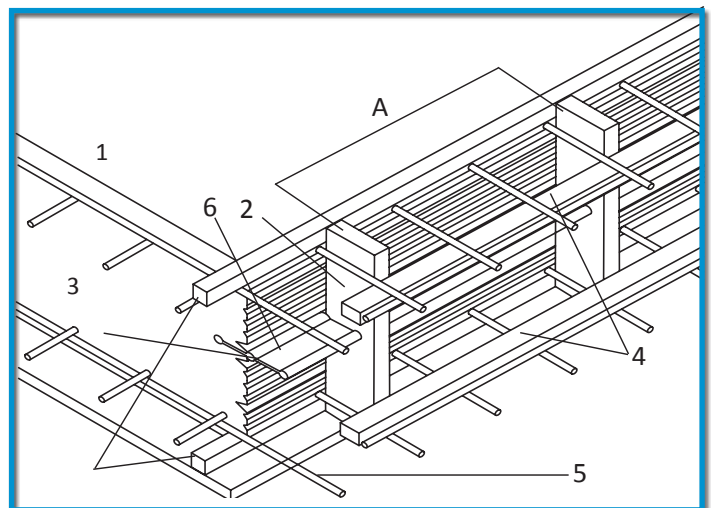
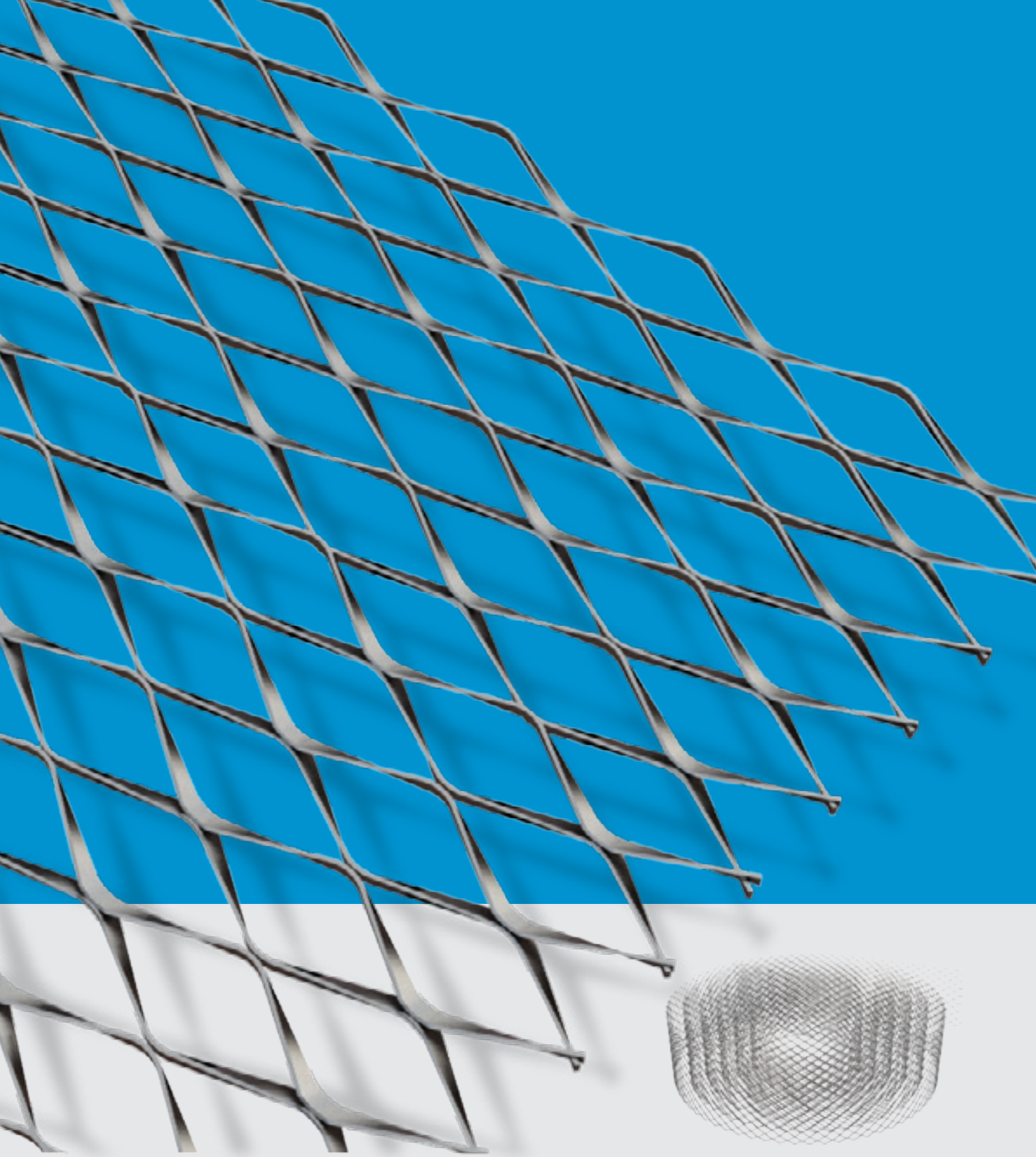


Fig 3 Expansion joint with Hy-Rib and joint band





[www.sfsp-ikk.com](http://www.sfsp-ikk.com)

# LOCATIONS

## KINGDOM OF SAUDI ARABIA

unitech.ksa@ikkgroup.com

### Jeddah

Tel : +966 12 627 8222  
Fax: +966 12 627 8722

### Mak kah/Taif

Tel : +966 12 541 1206  
Fax: +966 12 532 1675

### Riyadh

Tel : +966 11 292 8200  
Fax: +966 11 456 6627

### Qassim / Buraidah

Tel : +966 16 382 3946  
Fax: +966 16 385 2186

### Skakah / Qurayyat

Tel : +966 14 626 3904  
Fax: +966 14 626 3905

### Tabuk

Tel : +966 14 423 5203  
Fax: +966 14 423 5203

### Khamis Mushayt

Tel : +966 17 237 5929  
Fax: +966 17 237 8783

### Gizan

Tel : +966 17 321 6660  
Fax: +966 17 321 0665

### Mad inah

Tel : +966 14 842 1095  
Fax: +966 14 842 1090

### Yanbu

Tel : +966 14 390 1499  
Fax: +966 14 322 7101

### Dammam

Tel : +966 13 859 0097  
Fax: +966 13 857 8177

### Jubail

Tel : +966 13 361 4390  
Fax: +966 13 362 4499

### Hofuf

Tel : +966 13 530 1474  
Fax: +966 13 530 7144

## FACTORIES

### SFSP - KSA

sfsp.jeddah@ikkgroup.com

Specialized Factory for Steel Products  
**3rd Industrial City / Jeddah**

Tel: +966 12 637 4482  
Fax: +966 12 636 1963

### SFSP / UAE

sfsp.uae@ikkgroup.com

SIGMA Factory for Steel Products  
**DIC (Dubai Industrial City)**

Tel : +971 4 818 1919

### SFSP / Egypt

sfsp.cairo@ikkgroup.com

Specialized Factory for Steel Products  
**6th of October City Giza**

Tel : +20 2 3820 6477  
Fax: +20 2 3820 6036

### SFSP / Lebanon

sfsp.lebanon@ikkgroup.com

Specialized Factory for Steel Products  
**Tanayel, Bekaa**

Tel: +961 8 514 290  
Fax: +961 8 514 291

## BAHRAIN

unitech.bahrain@ikkgroup.com

### Manama

Tel : +973 17 874 897  
Fax: +973 17 789 470

## KUWAIT

unitech.kuwait@ikkgroup.com

### Kuwait City

Tel : +965 2 4924 937  
Fax: +965 2 4924 938

## UNITED ARAB EMIRATES

unitech.uae@ikkgroup.com

### Dubai - Al Rashidiyah

Tel : +971 4 2591 773  
Fax: +971 4 2591 774

### Abu Dhabi - Musaffah

Tel: +971 2 552 3393  
Fax: +971 2 552 5499

## OMAN

unitech.oman@ikkgroup.com

### Muscat

Tel : +968 24 591 006  
Fax : +968 24 597 006

## JORDAN

unitech.jordan@ikkgroup.com

### Amman

Tel : +962 6 556 3030  
Fax: +962 6 554 7911

### Aqaba

Tel : +962 6 556 3030  
Fax: +962 6 554 7911

## PAKISTAN

unitech.pakistan@ikkgroup.com

### Lahore - Punjab

Tel: +92 42 32301578

## EGYPT

unitech.egypt@ikkgroup.com

### Cairo 6<sup>th</sup> of October City

Tel : +20 2 3820 6477  
Fax: +20 2 3820 6036

## LEBANON

unitech.lebanon@ikkgroup.com

### Beirut

Tel : +961 1 858 277  
Fax: +961 1 858 276

## ENGINEERING, DESIGN, MARKETING & MULTIMEDIA

### Unitech Deutschland GmbH

#### Germany

unitech.germany@ikkgroup.com

### Stuttgart

Tel : +49 711 6868 7222  
Fax: +49 711 6868 7223

### Multi-D s.a.r.l

#### Lebanon

multi-d@ikkgroup.com

### Multi-d Beirut

Tel : +961 1 841 155  
Fax: +961 1 841 156



# LOCATIONS

SFSP makes every effort to maintain the accuracy and quality of the information provided in this Catalogue.

However, SFSP cannot guarantee and assumes legal liability or responsibility for the accuracy or completeness of the information provided.

Whilst every care has been exercised in the preparation of this catalogue to ensure that any advice, recommendations or information is accurate, no liability or responsibility of any kind is accepted.

Project working details should be entrusted to appropriately qualified and experienced persons, case by case.

With a policy of continuous product development, SFSP may modify product design and specification without due notice.

In case of any questions or remarks, feel free to contact the R&D Department.

**DISTRIBUTED BY:**



[www.sfsp-ikk.com](http://www.sfsp-ikk.com)