

COGNIZANCE

A UNITECH NEWSLETTER | APR 2021 | ISSUE 04

RAMADAN KAREEM

01

SAINT GOBAIN

02

Product Family Guide

BUILDING MATERIAL GUIDE

03

Cinema Construction

PRODUCT SPOTLIGHT

05

Nexus Website Development

CORPORATE NEWSLETTER

06

Under Development

THE NEW NORMAL

07

COVID-19 Precautions



OUR SOCIAL MEDIA

PAGE 08

رمضان كريم Ramadan Kareem



The Holy Month of Ramadan is a time to reflect not only on our own blessings but celebrate those who we live and work with to appreciate their love, support and loyalty. As we recognize and practice the true meaning of Ramadan, we are reminded of our duties to mankind and our responsibilities to those closest to us.

The last 10 Days of Ramadan are here, They are a chance to benefit from the immense blessings of Ramadan and seek salvation before the month comes to an end.

Ramadan Kareem and may Allah (Subhanahu wa ta'ala) bless you and your loved ones.



SAINT GOBAIN PRODUCT FAMILY GUIDE



SAINT GOBAIN INTRODUCTION

Saint-Gobain designs, manufactures and distributes materials and solutions for the construction, mobility, healthcare and other industrial application markets. Developed through a continuous innovation process, they can be found everywhere in our living places and daily life, providing wellbeing, performance and safety, while addressing the challenges of sustainable construction, resource efficiency and the fight against climate change.

This strategy of responsible growth is guided by the Saint-Gobain purpose, "Making the world a better home", which responds to the shared ambition of all the women and men in the Group to act every day to make the world a more beautiful and sustainable place to live in.

The Saint Gobain Product Basket offered in the MENA region is as follows:

▶ GYPROC



- › Plasterboards & Accessories
- › Fixings
- › GYPROC Access Panels
- › GYPFRAME Metal Components
- › GYPFRAME X Metal Components

▶ KIMMCO ISOVER®



- › Roof Insulation
- › Partition Wall Insulation
- › Ceiling Insulation
- › Floor Insulation
- › Facade Insulation
- › Insulation for Ducting System (Internal / External)

- ▶ CLIMAVER® Self-Supporting Duct Systems
- ▶ Acoustic Gypsum Products
- ▶ GYPREX Tiles

Saint Gobain is a strategic partner for Unitech - IKK Group in the MENA Region region. For many years we have worked together on many of the regions prestigious projects.

Combining Saint Gobains innovation capability, product quality with Unitech's Market Dominance makes this partnership very strong & long lasting.



BUILDING MATERIAL GUIDE

CINEMA CONSTRUCTION

MOVIE THEATER CONSTRUCTION

Introduction

We at Unitech, understand the complexity and unique aspects of movie theater construction.

Building materials that are specific to cinema are being included in Unitech product basket. Few of these products are introduced for the first time.

In KSA, The spaces offered for cinema development tend to be existing spaces within shopping malls – spaces previously designed for retail. Cinema has many differing requirements for key design parameters, such as structural loading, acoustics, spatial heights and column arrangements. A square metre of cinema generally needs more electrical power supply than a comparable square metre of retail.

All of this makes designing and constructing a cinema much more of a challenge in comparison to a purpose-built project elsewhere. However, this will change as existing retail spaces are built out and new purpose-built developments come on stream.



MOVIE THEATER CONSTRUCTION

The Future

Shortly after AMC opened KSA's first cinema, VOX Cinemas opened their four-screen cinema at Riyadh Park. Since then, multiple cinema licenses have been awarded and many cinemas have opened.

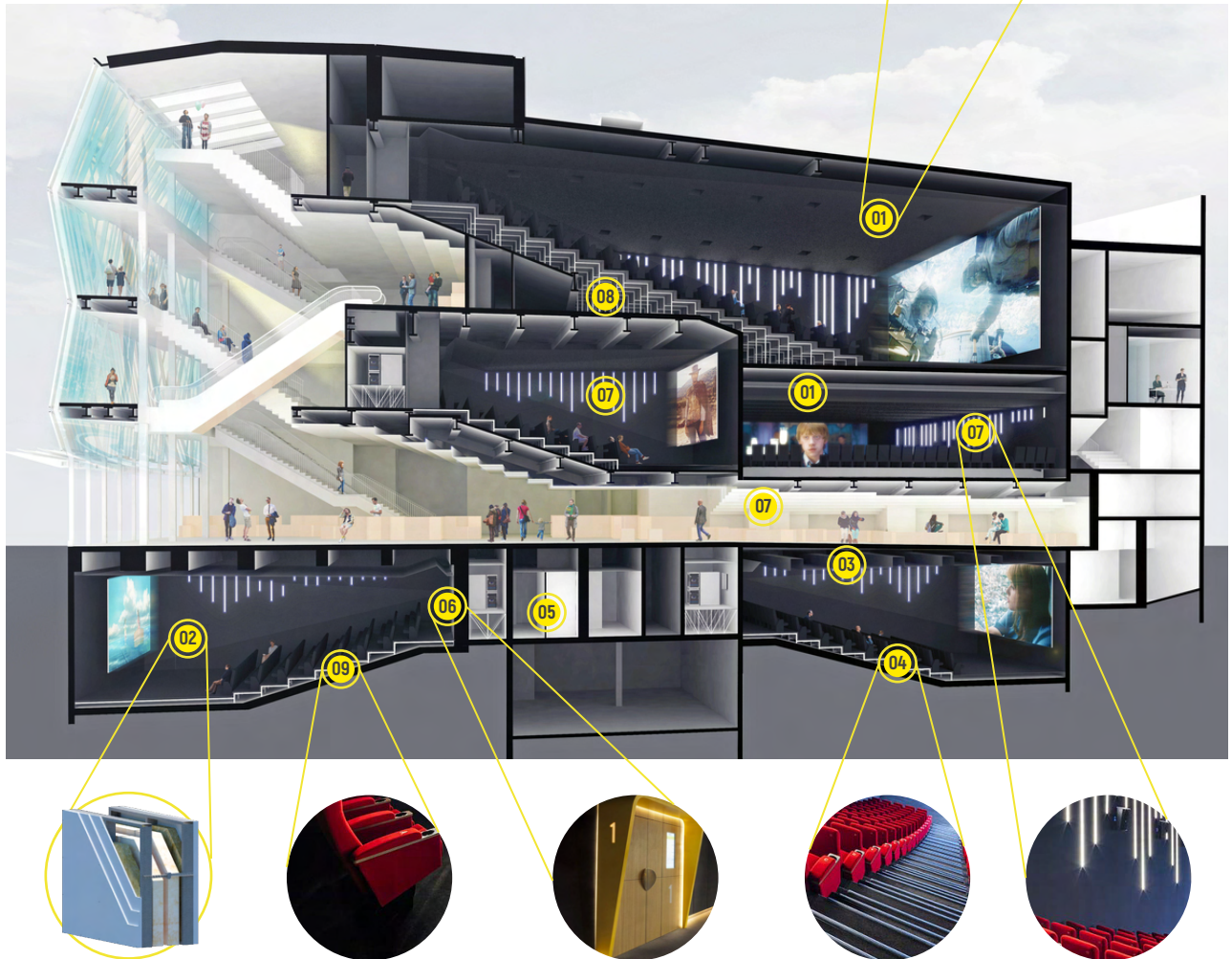
The KSA authorities have announced that 300 locations, hosting 2,000 screens, will be built before 2030. AMC has announced plans to open 50 locations before 2023, and VOX will open 600 screens before 2023.

The KSA's stated aim of opening 300 locations by 2030 is not just possible, it is well under way.



BUILDING MATERIAL GUIDE CINEMA CONSTRUCTION

APPLICABLE PRODUCTS From Unitech Product Basket



- 01 ▶ Rockfon Acoustical Ceiling System
- 02 ▶ Gyproc Partition System (GYPWALL AUDIO)
- 03 ▶ CLIMAVER® Self-Supporting Ducts
- 04 ▶ Nexus Stair Nosing
- 05 ▶ SFSP Phenolic Toilet Partition Systems
- 06 ▶ BMG Doors
- 07 ▶ Tungsram Lighting Systems
- 08 ▶ Raised Access Flooring
- 09 ▶ Rawlplug Anchoring Systems



Click the Products to get instant access
to their Information / Technical Data

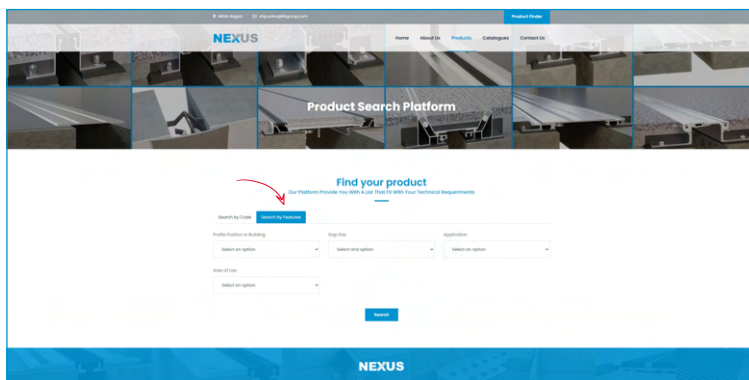
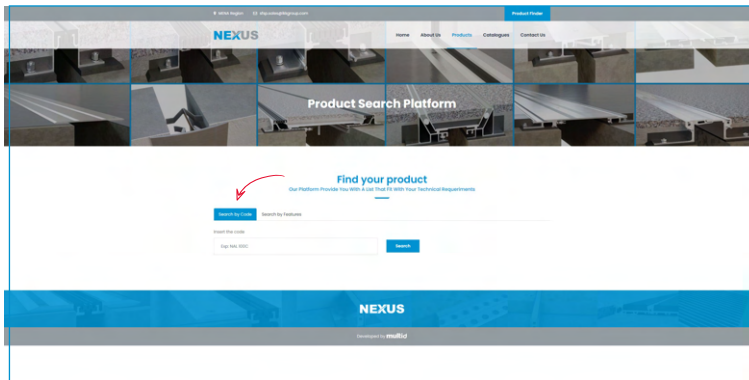
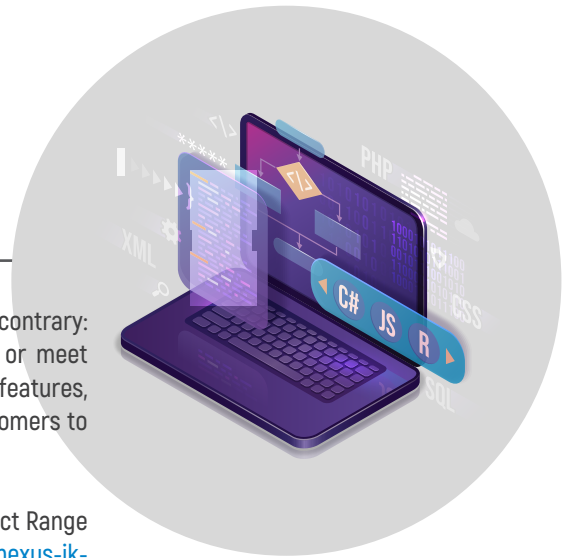


PRODUCT SPOTLIGHT NEXUS

NEXUS WEBSITE DEVELOPMENT Product Selector Page

Customers are no longer satisfied with what's standard. On the contrary: They expect customised products that reflect their own wishes or meet their specific needs. Product attributes such as colour, size, shape, features, and technical details can already be selected online, allowing customers to configure a tailor-made product.

We have designed a robust product selector page for Nexus Product Range and you can experience it while visiting the website: <https://nexus-ik.com/product-search.php> or by clicking this [button](#) on the Nexus Website.



The customers can utilize this platform to search the solution that will fit their technical requirements, either by product code or by product features.

IKK GROUP & PARTNERS CORPORATE NEWSLETTER

CORPORATE NEWSLETTER DEVELOPMENT

Your Opinion Matters

IKK Group & Partners would like to announce that the corporate marketing team is coming up with a newsletter. We invite you to click on the link below and take this short questionnaire to better understand what you would like to read in the newsletter.

Newsletter Link:

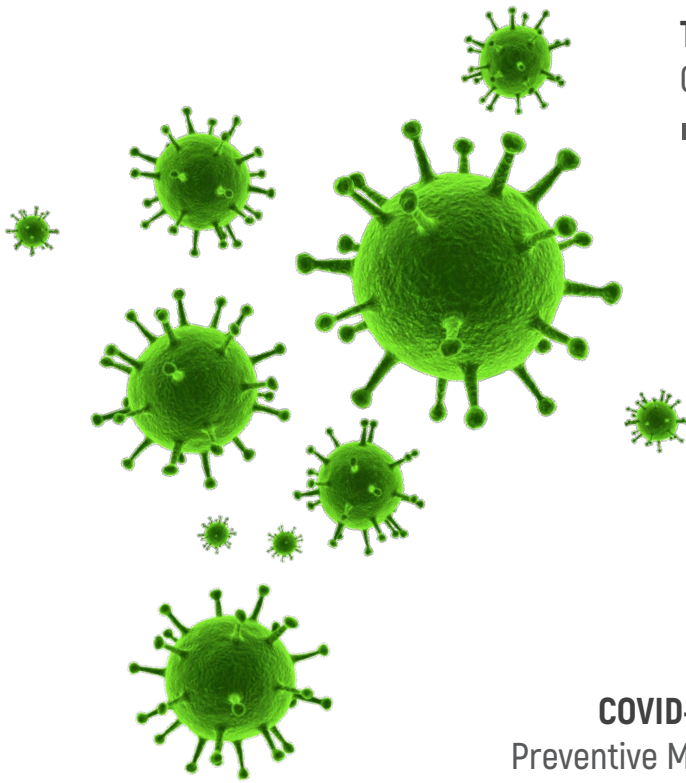
<https://forms.gle/mF73j8mu6xBmmguA7>

نود إعلامكم أن فريق التسويق الخاص بمجموعة شركات عصام قباني سوف يصدر نشرة إخبارية جديدة للمجموعة. وحرصاً منا على ابتكار نشرة تخدم الموظفين وتساهم في توفير المعلومات بشكل أفضل قهنا بتصميم هذا الإستبيان للحصول على آراء جميع الموظفين وستظل جميع الإجابات سرية. نرجوا تعبئة الإستبيان وشكراً لتعاونكم،

رابط نشرة إخبارية:

<https://forms.gle/mF73j8mu6xBmmguA7>





The New Normal COVID-19 Precautions

During the holy month of Ramadan, we would like to remind you to stay cautious and keep practicing COVID-19 precautionary measures.

The challenge of one of the worst health crisis the world has ever faced is still with us, we must help overcome this challenge by fulfilling our responsibilities towards our societies, and families through consistently abiding by the simple directions highlighted below:

COVID-19 Preventive Measures



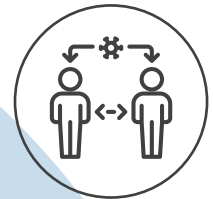
WASH THE HANDS WITH SOAP AND WATER FOR AT LEAST 40 TO 60 SEC.



USE HAND SANITIZER FOR 20 SEC. (WITH AT LEAST 60% ALCOHOL)



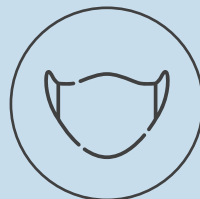
AVOID TOUCHING YOUR FACE (EYES, NOSE & MOUTH)



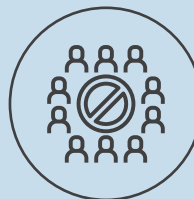
MAINTAIN A DISTANCE OF 2 METERS FROM OTHERS



COUGH OR SNEEZE INTO YOUR SHOULDER



ALWAYS WEAR A FACE MASK IN PUBLIC



AVOID GATHERINGS



AVOID SHARING ITEMS (FOOD, PERIPHERALS, ETC...)



AVOID HANDSHAKES



ALWAYS COMPLY WITH THE DIRECTIVES OF LOCAL HEALTH AUTHORITIES



DISINFECT THE SHARED SPACE FREQUENTLY

Follow Us Unitech Social Media Channels

Do you already follow us on our social media channels? If not, please follow us on the following social media channels, just click the icons below to land on the respective pages:



**FIND US ON
INSTAGRAM**



**FIND US ON
LINKED IN**



**FIND US ON
FACEBOOK**

The mission of our social media channels is to provide you with posts and short publications that will highlight the products, services, brands and teams that make up the Unitech family.





COGNIZANCE

A UNITECH NEWSLETTER



www.unitech-ikk.com

COG.APR21.INIS04

