

COGNIZANCE

A UNITECH NEWSLETTER | MAR 2021 | ISSUE 03

MD's MESSAGE

01

Our MD's message on our manufacturing facility (SFSP KSA) being approved for Saudi Aramco as an authorized vendor.

PRODUCT SPOTLIGHT

03

KIMMCO ISOVER Insulation Systems

BUILDING MATERIAL GUIDE

03

Precast Introduction
Precast Construction History
Precast Construction Today
Applicable Products from Unitech Basket

- ▶ Precast Housing Construction (External)
- ▶ Precast Housing Construction (External)
- ▶ Precast Hangar & Storage Construction

THE NEW NORMAL

08

COVID-19 PRECAUTIONS

08



OUR SOCIAL MEDIA

PAGE 09

IMPORTANT ANNOUNCEMENT

MD's Word on ARAMCO Approval For SFSP Cable Management System

Dear All,

As we all heard the news that Specialized Factory for Steel Products (SFSP) is included in the Saudi Aramco Supplier Information System.

What does this mean to us?

This means that we are one of the few recognized suppliers to manufacture as per Saudi Aramco Standards. Saudi Aramco only qualifies the suppliers with high-quality standards, innovative products and services, competitive prices, and on-time delivery. Adding value to the supply chain in this way, and having the ability to scale up to meet growth challenges within the business, are also recognized.

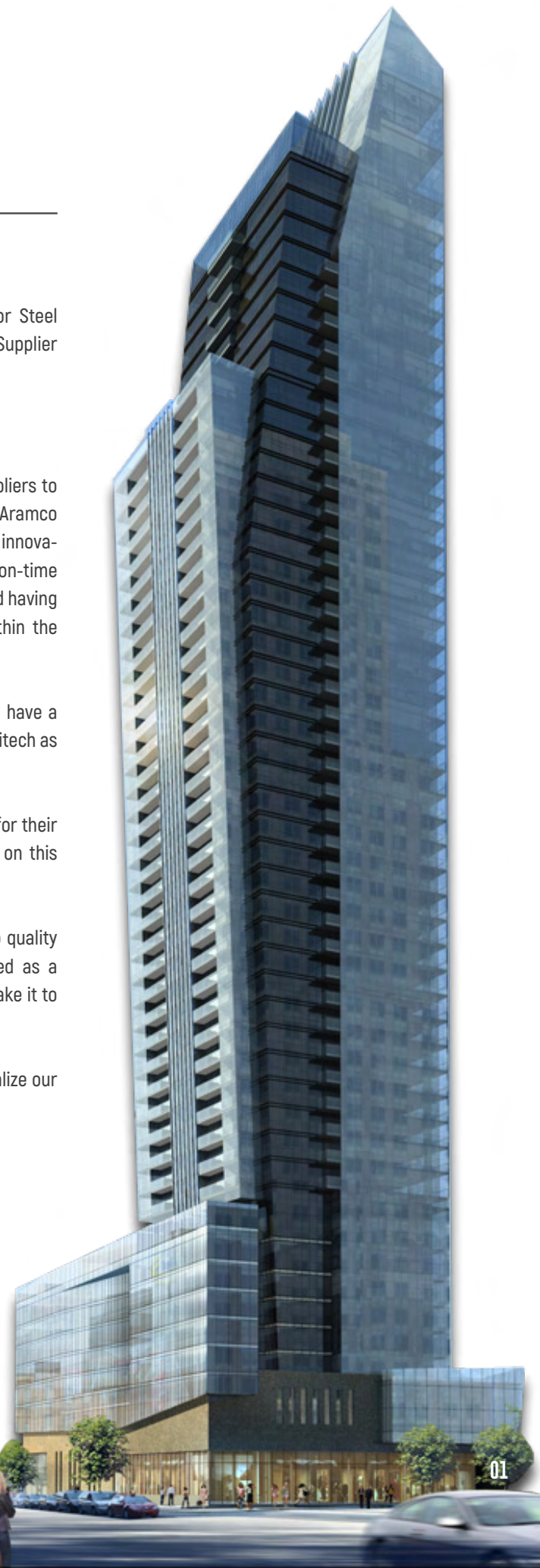
This is, in general, very good news for all of us, for we have a new sales channel opened for us and this will benefit Unitech as a whole.

I am especially pleased with the SFSP & Unitech teams for their valued efforts - who collaborated & worked tirelessly on this assignment and made sure it was a success.

However, our job has just started - the commitment to quality and high standards based on which we have qualified as a supplier for Saudi Aramco, we need to maintain it and take it to the next level.

Together and united, we can reach new heights and realize our vision to be the customers first choice.

Best Regards,
Saqib Altaf.



PRODUCT SPOTLIGHT

Product Spotlight | Mar 2021

KIMMCO - ISOVER

They design, manufacture, and distribute Glass Wool and Stone Wool insulation materials for building and industrial projects under the combined, KIMMCO-ISOVER brand.

KIMMCO-ISOVER products provide solutions that make life more comfortable, more economical, and environmentally sustainable. KIMMCO-ISOVER Glass Wool and Stone Wool products (Slabs, Blankets, Pipe and Mattresses) is an innovative addition to the diverse product basket of MEP Solutions that Unitech has offered the region's construction industry for over 40+ years.

KIMMCO-ISOVER products are installed within several components of a building such as:

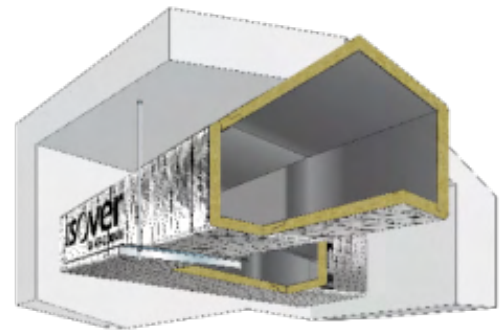
- ▶ External Walls
- ▶ Facade and Curtain Walls
- ▶ Dry-Wall Partitions
- ▶ Metallic Building Roofs and Walls Insulation
- ▶ HVAC Duct and Pipe Insulation
- ▶ Ceiling and Soffit Insulation

Taking the strategic partnership between IKK-Unitech and KIMMCO-ISOVER one step ahead, various training session have been conducted by the technical team of KIMMCO-ISOVER to the sales force within IKK-Unitech. Training certificate is under process to be issued for all the attendance.

During these training sessions, the Climaver system has been introduced to Unitech's sales force. This patented systems from KIMMCO-ISOVER are self-supporting ductwork systems, which are quick and easy to install. They perfectly replace conventional insulated metal ducts. They provide excellent thermal, fire, acoustic and air quality performance.

KIMMCO ISOVER
SAINT-GOBAIN

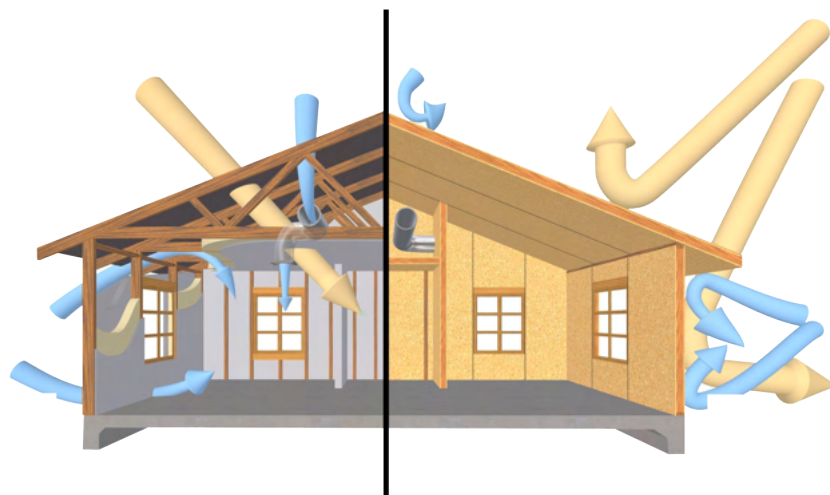
The "KIMMCO-ISOVER" brand is the result of the joint venture between Alghanim Industries & SAINT - GOBAIN in Kuwait Insulating Material Manufacturing Company S.A.K. (Closed) & Saudi International Insulation Manufacturing Co.



CLIMAVER

For any information, requirements or clarification please feel free to contact:

Ahmad Dahhan
Product Development Manager

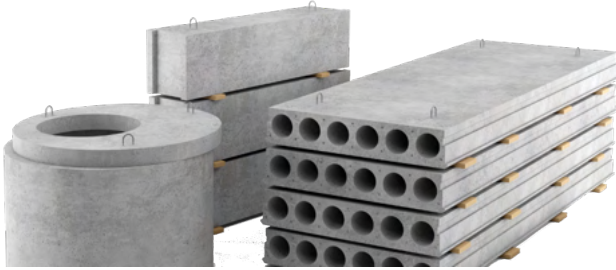


BUILDING MATERIAL GUIDE

PRECAST CONSTRUCTION

Precast Concrete

Introduction



Precast concrete is a construction product produced by casting concrete in a reusable mold or "form" which is then cured in a controlled environment, transported to the construction site and lifted into place ("tilt up"). In contrast, standard concrete is poured into site-specific forms and cured on site.

Precast Construction

History



Precast concrete has been around just about as long as concrete itself. Around 1300 BC, builders in the Middle East discovered how to make a hard cement-like coating by covering their clay homes with burned limestone – the precursor to modern cement.

Just a few centuries later, the Romans had begun to mix crushed limestone and other soft rocks with sand and water to create an early form of concrete. Pouring this concrete into molds or wooden forms helped form the intricate aqueduct systems and catacombs that required precision of measurement and durability of construction. Without the ability to pre-mold concrete and install multiple slabs at once despite inclement weather or other environmental obstacles, it's unlikely the ancient Romans would have been able to construct the extensive underground tunnels that still exist today. In this respect, the earliest versions of precast concrete were instrumental in inspiring the expansion of many large cities in Europe and Asia. It's also a testament for how truly durable concrete is as a building structure.

Let's fast forward to today.



BUILDING MATERIAL GUIDE

PRECAST CONSTRUCTION

Precast Construction

Today

Despite these early uses, precast concrete didn't become common or popular in much of Western Europe and North America until the early 1900s.

Just prior to World War I, British city engineer John Alexander Brodie patented the process of constructing precast paneled buildings, what was then a ground-breaking innovation in construction.

He ended up paving the way for future construction innovations.

On June 18th, 1954, the Precast Concrete Institute was formed to serve as the technical sounding board for all information and practices related to precast/pre-stressed concrete.

Since its founding, PCI has developed, maintained and disseminated the body of knowledge for the precast and prestressed concrete structures industry, and hence created and maintained many industry standards.

Today, precast is widely used in the construction of the superstructure or frame of a building. And due to its versatility in shape, texture and color, it's often used as architectural cladding designed to mimic the appearance of more costly materials such as limestone, granite or stone.

But perhaps the greatest benefit of precast concrete is that it can serve as both the structural and architectural element at the same time, providing a total precast concrete building.



BUILDING MATERIAL GUIDE PRECAST CONSTRUCTION

Applicable Products

From Unitech Product Basket



Precast Housing Construction (External)

- ▶ Thermal Insulation (Extruded)
- ▶ Thermal Insulation (Expanded)
- ▶ EIFS System (PLEKO)
- ▶ EIFS System (Caparol)
- ▶ External Paints (Caparol)
- ▶ Mechanical Cladding (SFSP)
- ▶ Doors (BMG)
- ▶ Earthing and Lightning Products (Tungsram)
- ▶ Geosynthetic for Landscaping (Terram)
- ▶ Mechanical / Chemical Anchoring System (Rawlplug)
- ▶ Facade Fixation (Rawlplug)
- ▶ Sealants (Eagle Seal)



[Click the Products to get instant access
to their Information / Technical Data](#)



BUILDING MATERIAL GUIDE PRECAST CONSTRUCTION

Applicable Products

From Unitech Product Basket



Precast Housing Construction (Internal)

- ▶ Cable Conduit System (Uniduct)
- ▶ Sockets and Switches
- ▶ Steel Boxes
- ▶ Internal Paints (Caparol)
- ▶ Dry Wall Gypsum (Gyproc)
- ▶ Dry Wall Gypsum (Mada)
- ▶ Dry Wall Gypsum (UMI)
- ▶ Dry Wall Gypsum (Gboard)
- ▶ Tile Adhesive (Eagle Mastic)
- ▶ Tile Grout (Unifix)
- ▶ Cementitious Waterproofing (POLY TI)
- ▶ Toilet Partition (SFSP)
- ▶ Polyethelene Sheets
- ▶ Light Weight Fixing (Elematic)
- ▶ Light Weight Fixing (Rawlplug)
- ▶ Sealants (Eagle Seal)
- ▶ Earthing and Lightning Products (Tungsram)



[Click the Products to get instant access to their Information / Technical Data](#)

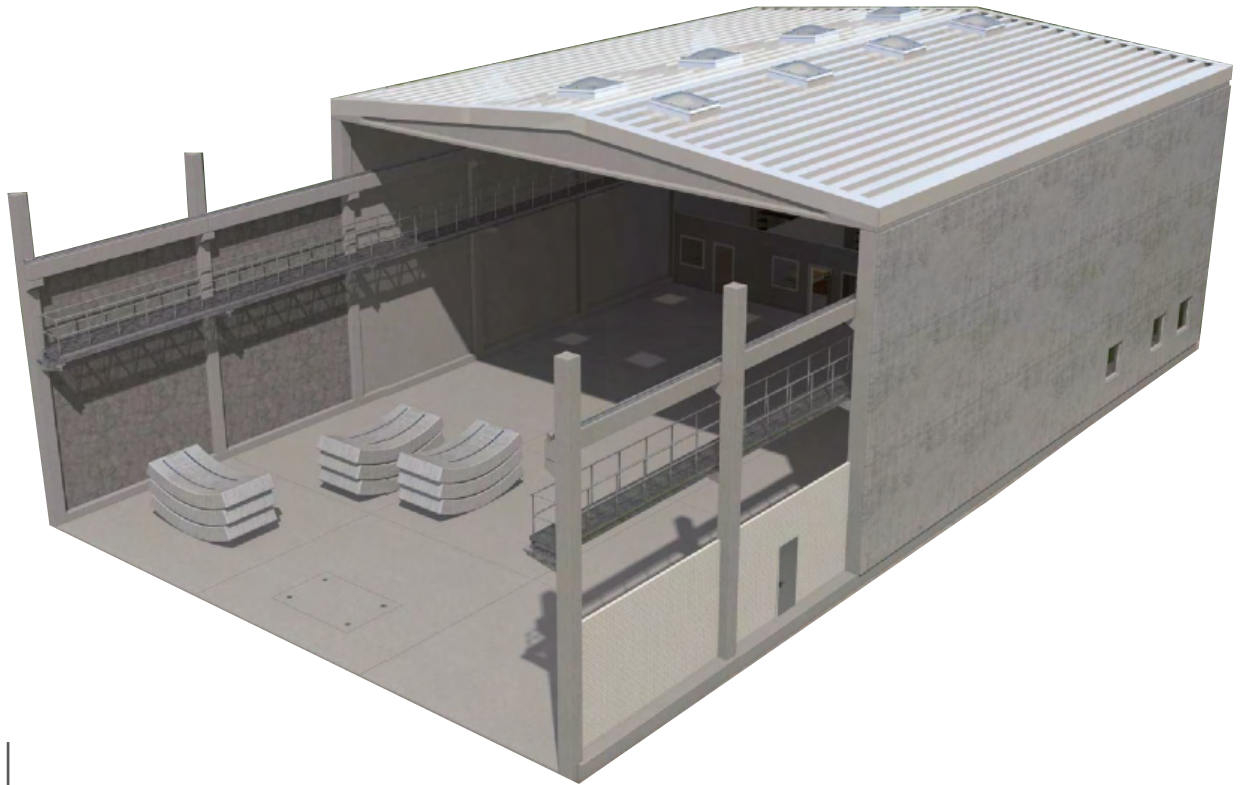


BUILDING MATERIAL GUIDE

PRECAST CONSTRUCTION

Applicable Products

From Unitech Product Basket



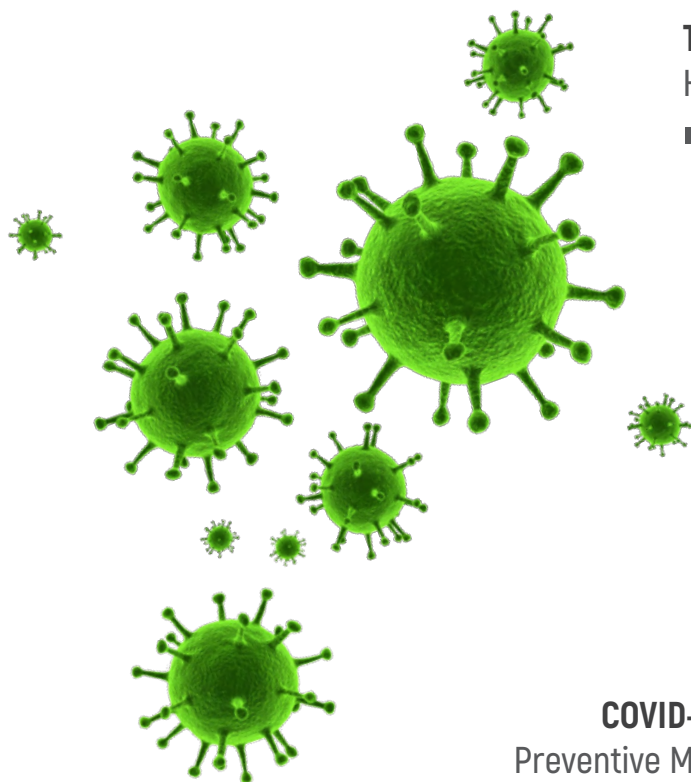
Precast Hangar & Storage Construction

- ▶ Cable Management Systems (SFSP)
- ▶ Pipe Clamp & Hangars (SFSP)
- ▶ Cable Conduit System (Uniduct)
- ▶ Speed & Guards Bumpers (Pawling)
- ▶ Wall and Corner Guard (Pawling)
- ▶ Technical Profile (Nexus)
- ▶ Safety Flooring
- ▶ Access Panels (BMG)
- ▶ Roof Hatches (BMG)
- ▶ Concrete Accessories (Unicrete)
- ▶ Polyethylene Rolls
- ▶ Waterproofing (Tremco)
- ▶ Waterproofing (Poly Ti)
- ▶ Earthing and Lightning Products (Tungsram)
- ▶ Odour Control System
- ▶ Power Tools (AEG Powertools)
- ▶ Facade Fixing (Rawlplug)
- ▶ Mechanical / Chemical Anchoring System (Rawlplug)
- ▶ Thermal Insulation (Extruded)
- ▶ Thermal Insulation (Expanded)
- ▶ C Channels (SFSP)



[Click the Products to get instant access to their Information / Technical Data](#)





The New Normal

How life has changed due to COVID-19

As the holy month of Ramadan approaches, we would like to remind you to stay cautious and keep practicing COVID-19 precautionary measures.

The challenge of one of the worst health crisis the world has ever faced is still with us, we must help overcome this challenge by fulfilling our responsibilities towards our societies, and families through consistently abiding by the simple directions highlighted below:

COVID-19

Preventive Measures



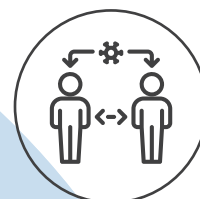
WASH THE HANDS WITH SOAP AND WATER FOR AT LEAST 40 TO 60 SEC.



USE HAND SANITIZER FOR 20 SEC. (WITH AT LEAST 60% ALCOHOL)



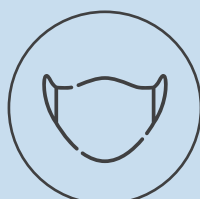
AVOID TOUCHING YOUR FACE (EYES, NOSE & MOUTH)



MAINTAIN A DISTANCE OF 2 METERS FROM OTHERS



COUGH OR SNEEZE INTO YOUR SHOULDER



ALWAYS WEAR A FACE MASK IN PUBLIC



AVOID GATHERINGS



AVOID SHARING ITEMS (FOOD, PERIPHERALS, ETC...)



AVOID HANDSHAKES



ALWAYS COMPLY WITH THE DIRECTIVES OF LOCAL HEALTH AUTHORITIES



DISINFECT THE SHARED SPACE FREQUENTLY

Follow Us

Unitech Social Media Channels

Do you already follow us on our social media channels? If not, please follow us on the following social media channels, just click the icons below to land on the respective pages:



**FIND US ON
INSTAGRAM**



**FIND US ON
LINKED IN**



**FIND US ON
FACEBOOK**

The mission of our social media channels is to provide you with posts and short publications that will highlight the products, services, brands and teams that make up the Unitech family.





COGNIZANCE

A UNITECH NEWSLETTER



www.unitech-ikk.com

COG.MAR21.INIS03



40⁺ SINCE 1979
YEARS
OF EXPERIENCE