

COGNIZANCE

A UNITECH NEWSLETTER | NOV-DEC 2021 | ISSUE 10

PRODUCT REFRESH

Nexus Profiles, Comprehensive Designs and Color Assortments **03**

Weatherproof Cable Trunking **04**

PRODUCT NEWS

Pixel Raised Access Flooring Catalog **05**

NEWS UPDATE

Formula 1 Development in Jeddah **06**

Unitech-SFSP Skills Competition Training - UAE Sales Team **07**

“WE CARE CAMPAIGN” **08**

8 RULES OF CRISIS COMMUNICATION **09**

COVID19 HEALTH INSTRUCTIONS **10**



OUR SOCIAL MEDIA

PAGE 11.

2022

H a p p y N e w Y e a r

"Thank you all for your dedication and hard work over the past year.

Wishing you all a very Happy & Prosperous New Year!

Let's embark upon the year 2022 with devotion to our goals and aspirations that we will actually cling this year!"

PRODUCT REFRESH: NEXUS PROFILES, COMPREHENSIVE DESIGNS AND COLOR ASSORTMENTS

NEXUS

Nexus Profiles are well designed to meet design requirements of multiple projects. Nexus Profiles include profiles for floors and walls, stair nosing, wall skirting, movement joints, channels and strips, tactile solutions, and rubber gaskets.

A wide selection of profiles from multiple materials and finishes including stainless steel, aluminum, PVC, natural and EPDM rubber is available. Available colors are perfectly selected to suit the ambiance of each facility, providing elegance in shape, rigidity of usage, and durability over long time.

► Tile Trims

Nexus Trims neatly cover the unglazed edges of tiles and corners of floors, walls, staircases, tables, and others with a variety of elegant colors to match or contrast with the tiled surfaces. It is available in PVC, Aluminum, and stainless steel materials with a selection of fine finishes for a wide spectrum of applications.

► Stair Nosing

Nexus Stair Nosing Profiles increase the lifespan of the stairs, providing a long lasting and safe staircase. Nexus Stair Nosing helps increase safety by offering slip-resistant tread for the leading edge of stairs that promote foot traction to protect steps from wear and tear.

► Skirting

Nexus Skirting provides an elegant connection between the floor and the wall. Nexus Skirting is knock resistant and water resistant and comes in a selection of materials including anodized aluminum, stainless steel of polished and brush finished.

► Movement Joints

Nexus Tile Movement Joints protect tile edges and to accommodate movements and local stresses. Tile Movement Joints are best suited replacement for such situations and suitable for use with Ceramic, Terrazzo, Marble, Stone and other similar materials.

► Channels and Strips

Nexus Channel and Strip products for walls are available through different materials and finishes including Aluminum and Stainless Steel. Additional customized RAL color selection is available to meet the design requirements of projects.

► TACTILE

Nexus provides tactile solutions via a versatile range of tactile products and a variety of designs and colors to suit the requirements of each project.

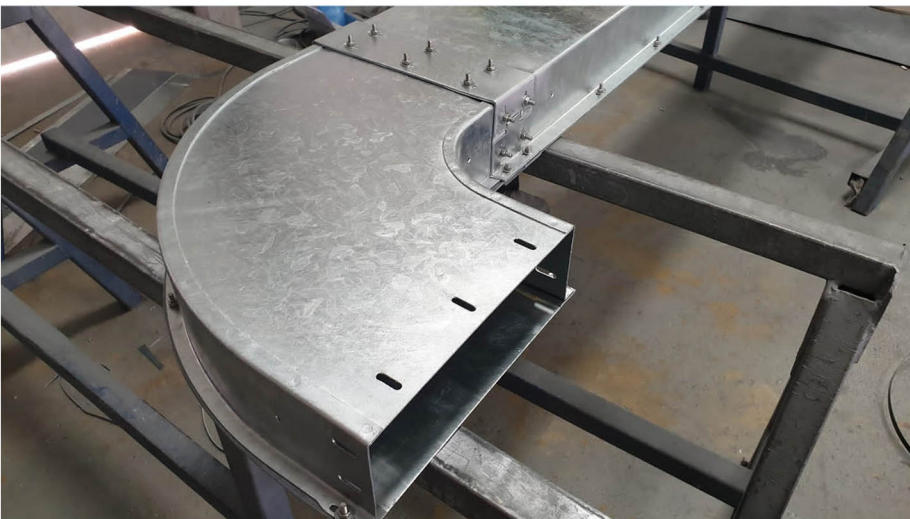
Nexus Tactile Solutions provide a perfect guide for detectable warning surface and indicators



PRODUCT REFRESH: WEATHERPROOF CABLE TRUNKING

Cable Trunkings are used to protect cables from damage & dust. Our cable trunkings system comes in a variety of thickness and sizes and is available in three types: Single, double, and triple compartments

Cable Trunkings and Accessories are offered in a comprehensive range. Mill galvanized, hot-dip galvanized, and powder coated are the various finishes produced in our factories.



Available Thicknesses	Fittings	Dimensions
1 mm, 1.2 mm, 1.5 mm	Bend °45 Top Lid,	50 x 50 mm
	Bend °45 Inside Lid,	75 x 75 mm
	Bend °45 Outside Lid,	100 x 100 / 75 / 50 mm
	Bend °90 Top Lid,	150 x 150 / 100 / 75 / 50 mm
	Bend °90 Inside Lid,	200 x 100 mm
	Bend °90 Outside Lid,	300 x 100 mm
	TEE Bend Top Lid,	450 x 100 mm
	TEE Bend Inside Lid,	600 x 100 mm
	TEE Bend Outside Lid,	
	Intersection, Reducers	



PRODUCT NEWS: PIXEL RAISED ACCESS FLOORING CATALOG



We proudly announce the introduction of our in-house raised flooring products, designed, manufactured by Specialized/Sigma factory for steel products, and promoted under our new brand name Pixel Raised Flooring. Pixel Raised Flooring system will be available soon within our markets.

The new range of innovative high performance system will include multiple types of panels and pedestals as well as ventilation and electrical accessories

Pixel raised access flooring products are manufactured in accordance with local international norms of fabrication to meet demanding commercial, residential, governmental, transportation, healthcare, and educational projects, and to withstand heavy pedestrian and rolling loads.

OUR RANGE OF PIXEL RAISED FLOORING INCLUDES:

Woodcore Raised Floor System:

High density chipboard core material with multiple anti-static floor coverings including HPL, Vinyl, Carpet, as well as Ceramic

Steel - Cementitious system:

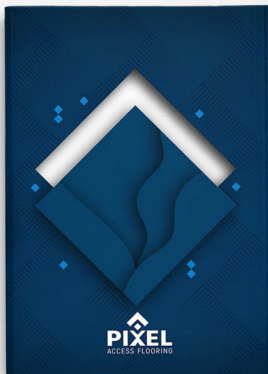
Epoxy coated teel Composite material with cementitious infill for heavy traffic and high loads. The system comes in bare finish or with anti-static finishes

Calcium Sulphate System:

High strength, non-combustible Calcium sulphate, made of environmental-friendly material with variety of floor coverings according to the application

Pixel raised flooring understructure system allows elevation of flooring from 15cm up to 2000 cm, with our durable electro galvanized pedestals and steel stringer.

Perforated panels specially constructed to allow for air flow distribution from under the raised access floor, PIXEL Access flooring offers a wide range of steel perforated panels with or without a damper for regulating air flow.



BENEFITS OF RAISED FLOORING

- Raised access flooring system is an elevated floor that is laid above a sub floor, in order to leave an open space or void between.
- Raised floor system was originally used in data centers and computer rooms. Due to the increased application of advance technology which need proper cable management, Raised floors through their infinite flexibility became the key element required for today's intelligent buildings and an effective solution in general offices, data centers, schools, universities, Power stations, and others.
- The most common usage for access floors is to run cables, electrical wiring and HVAC ducts. Running cables and electrical wiring through the accessible space between the panels and the subfloor allows easy access and flexibility; wiring can be rerouted, repaired and upgraded without construction and minimal interference to the business' everyday activity. When combined with modular electrical systems and modular walls, the entire building can be reconfigured in a fraction of the time it would traditionally take.
- Heating and cooling a building with a raised flooring system is also more efficient. The empty space between the panels and the subfloor acts as a plenum chamber to dispense conditioned air evenly throughout the building.

NEWS UPDATE: FORMULA 1 DEVELOPMENT IN JEDDAH

After months of relentless work, we are extremely proud to have successfully provided the Saudi Arabian Grand Prix – the longest F1 circuit in the world - with our MEP solutions to manage and contain 200,000 meters of power and data cables. A large portion of the quantity supplied was Cable Trunkings.

Our achievements are a result of the great efforts we have collectively made, and a reflection of our commitment and strong framework.

**JEDDAH
CORNICHE
CIRCUIT**



NEWS UPDATE: UNITECH-SFSP SKILLS COMPETITION TRAINING – UAE SALES TEAM



For many years IKK group has been committed to training, empowering, and developing the leaders of tomorrow with various programs enhancing teamwork, leadership and decision making.

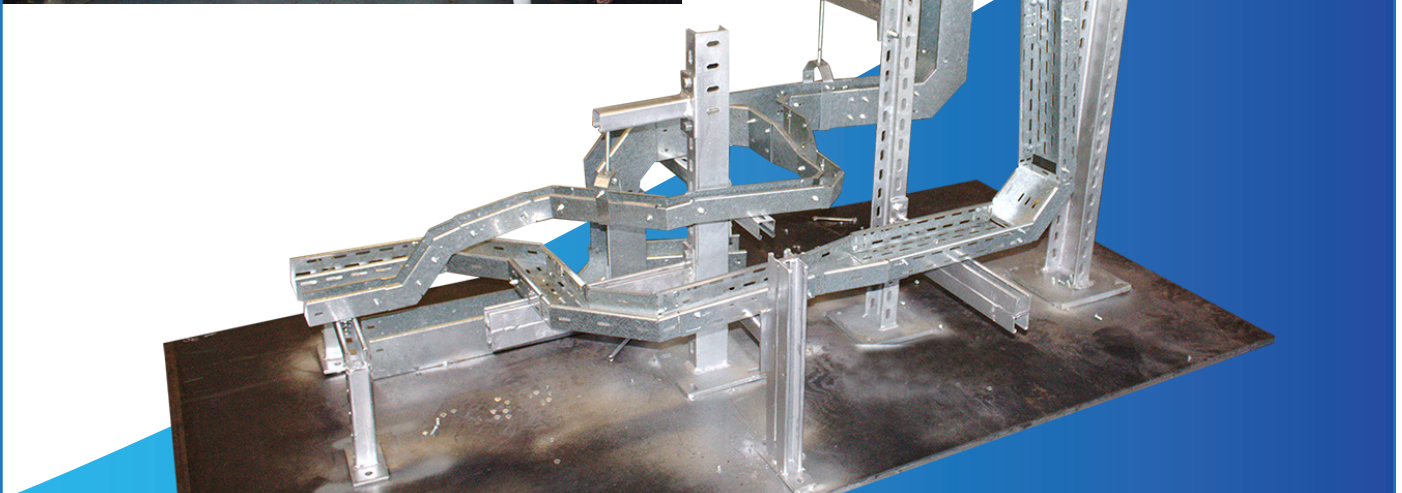
Passion, Energy and Drive: These were the ingredients of Unitech "Skills Competition" training with Sigma Factory for Steel Products. The training was held on 16th November 2021 in UAE for the sales team. The main goals of this training were to improve the level of team collaboration and communication as well as boosting products' knowledge, ensuring we provide a consistent level of excellence & generate value to all our stakeholders.

The 3 hour session commenced with a Health & Safety orientation towards the 16 participants, and safety uniforms were distributed

prior the event. They were divided into four groups Falcons, Lions, Eagles, and Deer. Each team was entailed to manufacture & assemble a cable management system along with several techniques within a fixed timeframe. With SFSP technical team to assistance and support; our champions had an insightful look into the incredible efforts and daily work done by SFSP team.

At the end of the session, a jury of SFSP quality team, Unitech Management, and the Learning & Business Process Manager have evaluated the teams based on criteria such as technical knowhow and teamwork.

We would like to take this opportunity to congratulate the Lion team for winning the competition and share these exciting photos with you.



“WE CARE CAMPAIGN”

Armed with a powerful vision from our MD and a set of strategic objectives that align with both, the vision and organization-wide goals, we have laid out a road map for developing and strengthening our sales force, this campaign is an initiative by Unitech’s Product Development Dept. and this initiative is carried out because “We Care”.



A UNITECH
PRODUCT DEV.
INITIATIVE

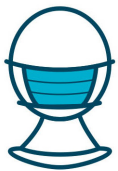
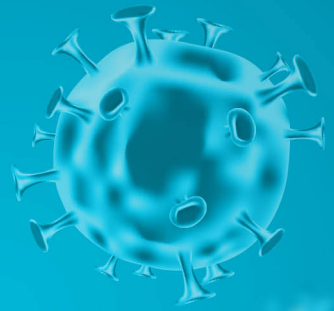
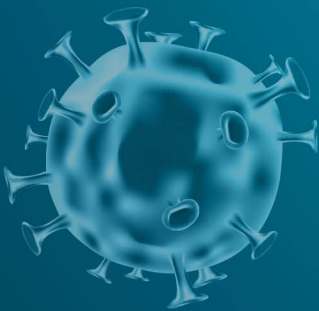


8 RULES OF CRISIS COMMUNICATION

1	Communication are now a two-way street, whether you want them to be or not.	
2	Real-time is not just a suggestion but an expectation of our audience - an expectation that will not turn in your favor if unmet.	
3	Being informative is the only way. If you're not informative somebody else will be - on a channel that your organization has zero control over.	
4	Listen , listen, listen! Listen to what others are saying and publishing, to what they're not saying, and where they are not saying it.	
5	When you properly combine real-time and two-way you get responsive your audience will be responsive and so must you.	
6	Sincerity, honesty and meaningful apologies go a long way. But remember: actions speak so much louder than words you have to say what you mean and prove it.	
7	Human dealing with humans. Forget the corporate and legal talk. Forget hiding behind a logo. Your audience expects to hear from the humans behind the brand.	
8	Adaptability and flexibility need to be incorporated into your corporate culture - not to mention your crisis communications strategy. The digital landscape changes often and quickly. Staying stagnant will leave you vulnerable.	

LET'S ALL DO OUR PART

TO PREVENT THE SPREAD
OF CORONAVIRUS



Wear a Mask



Wash Your Hand



Contactless



Avoid Crowds

STAY SAFE, STAY HEALTHY

Follow Us Unitech Social Media Channels

Do you already follow us on our social media channels? If not, please follow us on the following social media channels, just click the icons below to land on the respective pages:



The mission of our social media channels is to provide you with posts and short publications that will highlight the products, services, brands and teams that make up the Unitech family.

Follow Us, So you can be updated with our new developments, news and more...





COGNIZANCE

A UNITECH NEWSLETTER



www.unitech-ikk.com

COG. NOV-DEC 21. IN 10

