

NEXUS

Stair Nosing Profiles

AST 5030

Features

- Protect Step Edge.
- Provide Slip Resistance.
- Provide Visual Contrast for step edge.

Surface

- Anodized Aluminium with Interchangeable Rubber Insert.
- Colours : Silver, Gold & Bronze with Black Rubber.

Material

- Aluminium Alloy 6063, T6
- EPDM Rubber

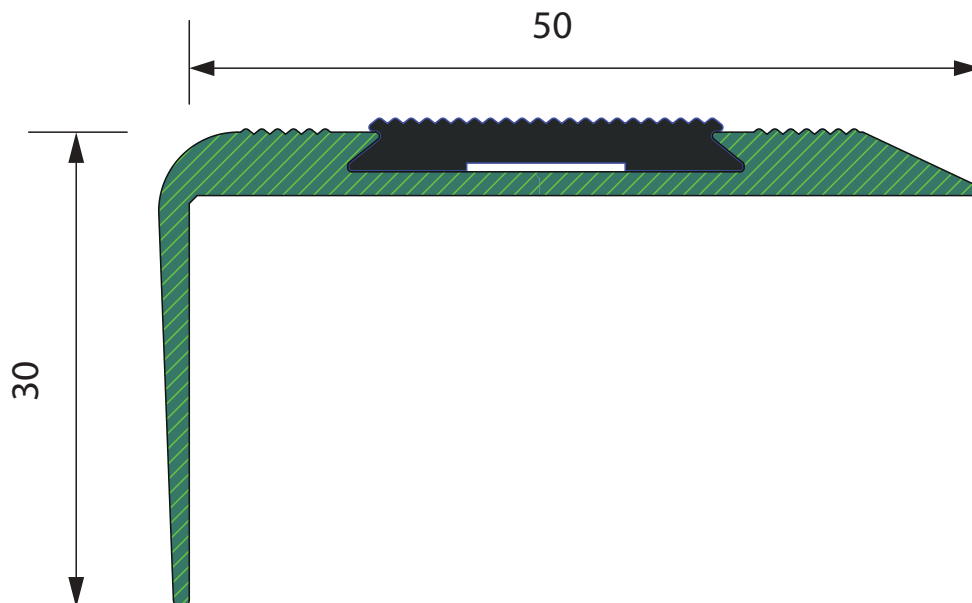
Functions

- The upper side is knurled to increase slip and slide resistance.
- Rubber part Changeable.



NEXUS
CODE
AST 5030

APPLICATIONS STEP NOSING



NEXUS

Stair Nosing Profiles

AST 5530

Features

- Protect Step Edge.
- Provide Slip Resistance.
- Provide Visual Contrast for step edge.

Surface

- Anodized Aluminium with Interchangeable Carborundum Non-Slip Strip.
- Colours : Silver, Gold & Bronze with Black Carborundum.

Material

- Aluminium Alloy 6063, T6
- 20mm Self-Adhesive Carborundum.

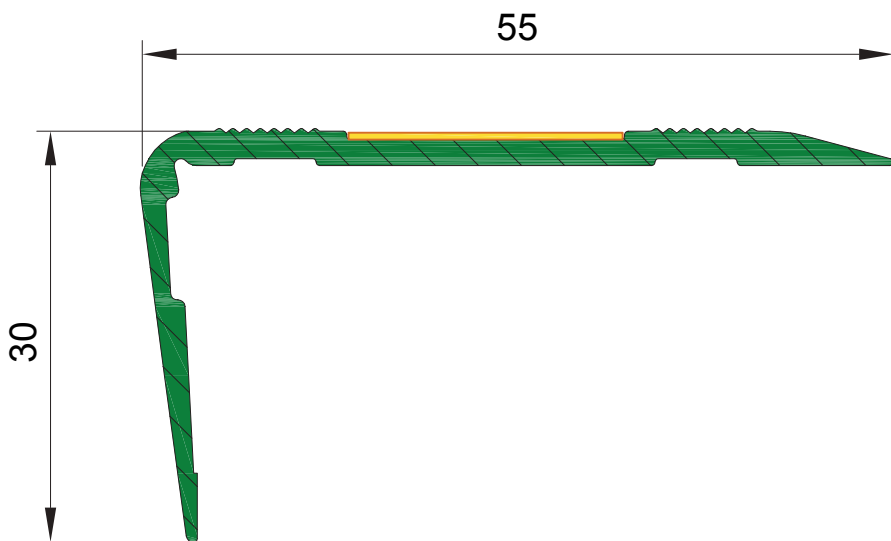
Functions

- The upper side is knurled to increase slip and slide resistance.
- Carborundum part Changeable.



NEXUS
CODE
AST 5530

APPLICATIONS STEP NOSING



NEXUS

Stair Nosing Profiles

AST 4525

Features

- Protect Step Edge.
- Provide Slip Resistance.
- Provide Visual Contrast for step edge.

Surface

- Anodized Aluminium.
- Colours :
Silver, Gold & Bronze.

Material

- Aluminium Alloy 6063, T6.

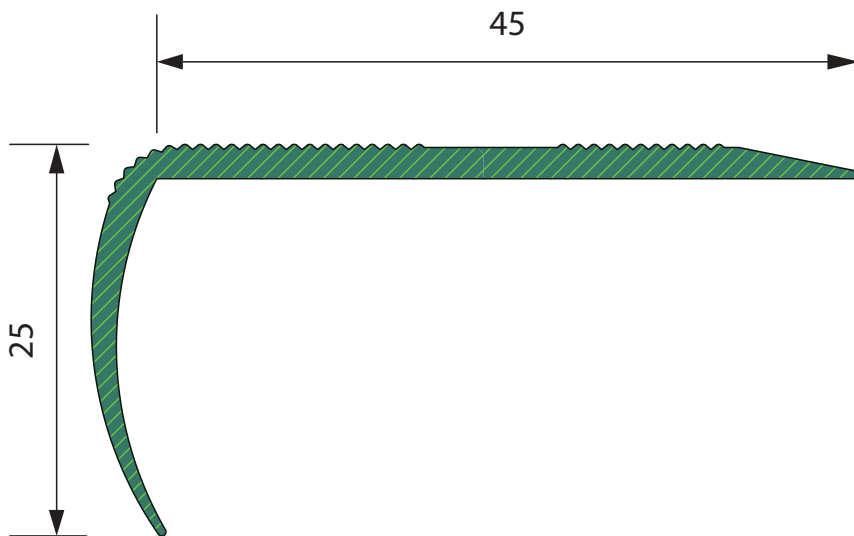
Functions

- The upper side is knurled to increase slip and slide resistance with curved vertical part.
- This profile applicable for steps from 87° upto 90°.



**NEXUS
CODE
AST 4525**

APPLICATIONS STEP NOSING



NEXUS

Stair Nosing Profiles

AST 7028

Features

- Protect Step Edge.
- Provide Slip Resistance.
- Provide Visual Contrast for step edge.

Surface

- Anodized Aluminium.
- Colours :
Silver, Gold & Bronze.

Material

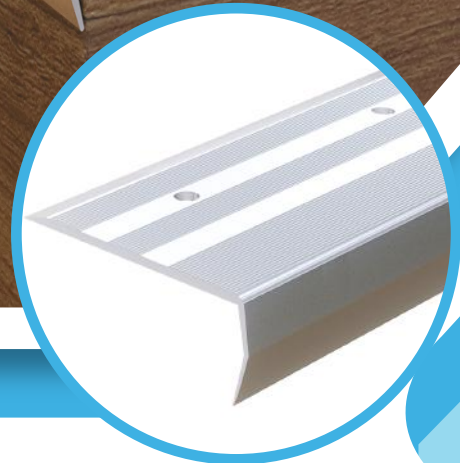
- Aluminium Alloy 6063, T6.

Functions

- The upper side is knurled to increase slip and slide resistance.



NEXUS
CODE
AST 7028



APPLICATIONS STEP NOSING

