

NEXUS

Entrance Matting Systems

NEXUS ENTRANCE MATTING SYSTEMS

Edition 2019-2020



NEXUS

Entrance Matting Systems





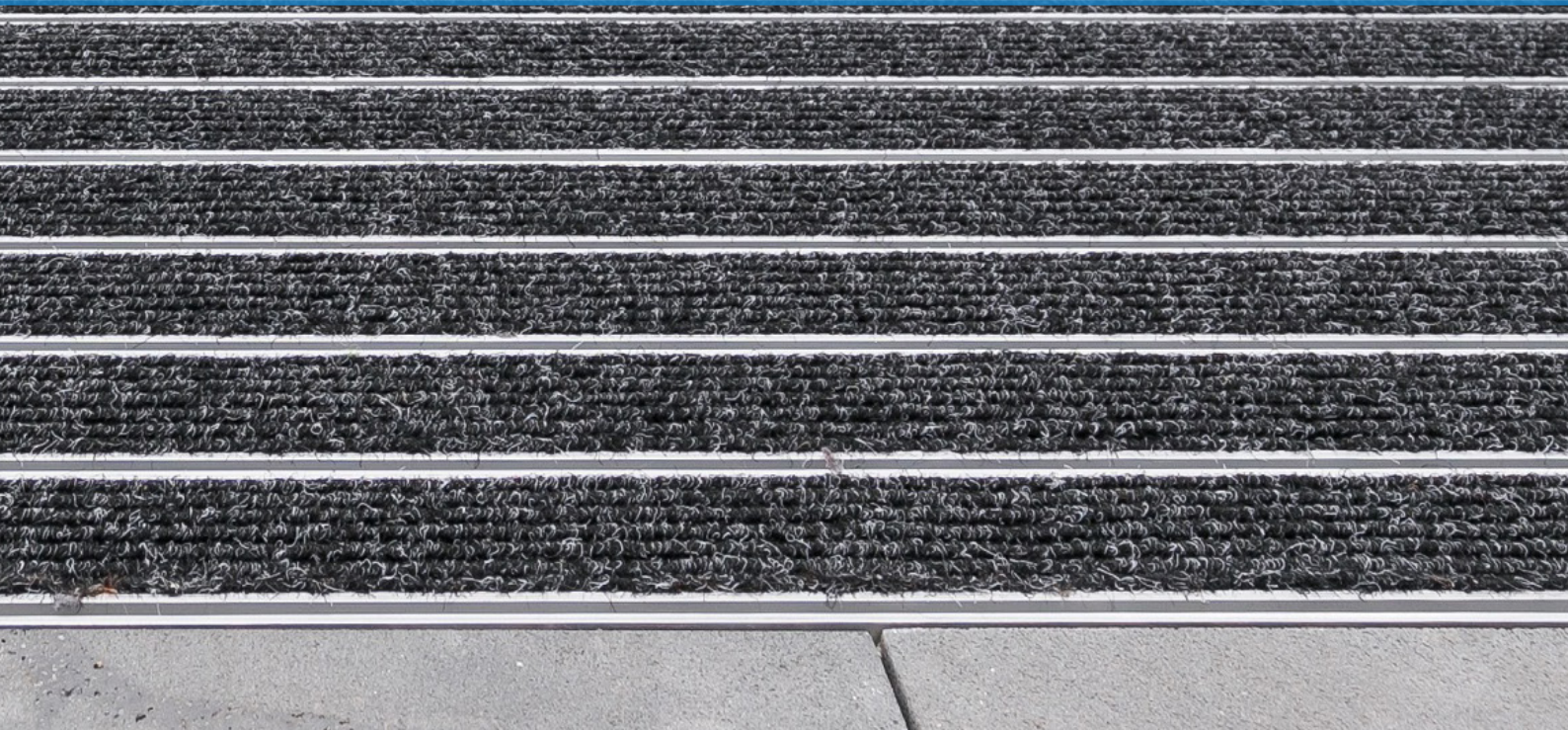
Entrance mats Reduce dirt and moisture and are perfectly suited for the busiest areas. Their high dirt absorption rate and slip-resistant rubber backing make these mats the perfect solution for use in business entrances, receptions and where great levels of pedestrian traffic is causing dirt and moisture.

Nexus Entrance matting systems provide heavy duty entrance mats composed of aluminium profiles with a carpet, brushes or rubber inserts. The combined actions of these materials perform as a dirt barrier preserving the cleanliness of the facility's flooring. Our durable matting systems provide the most suitable solution for removing, absorbing and retaining dirt and moisture.

Our mats are manufactured from high quality raw materials to withstand heavy traffic in the busiest areas of each facility. Our matting systems are easily maintained and serviced, and are built to last longer.

Unlike other kinds of matting, Nexus entrance mats are very comfortable and silent. They have been designed to avoid problems with heels and are suitable for wheeled traffic such as wheelchairs, babies' prams and pushchairs.

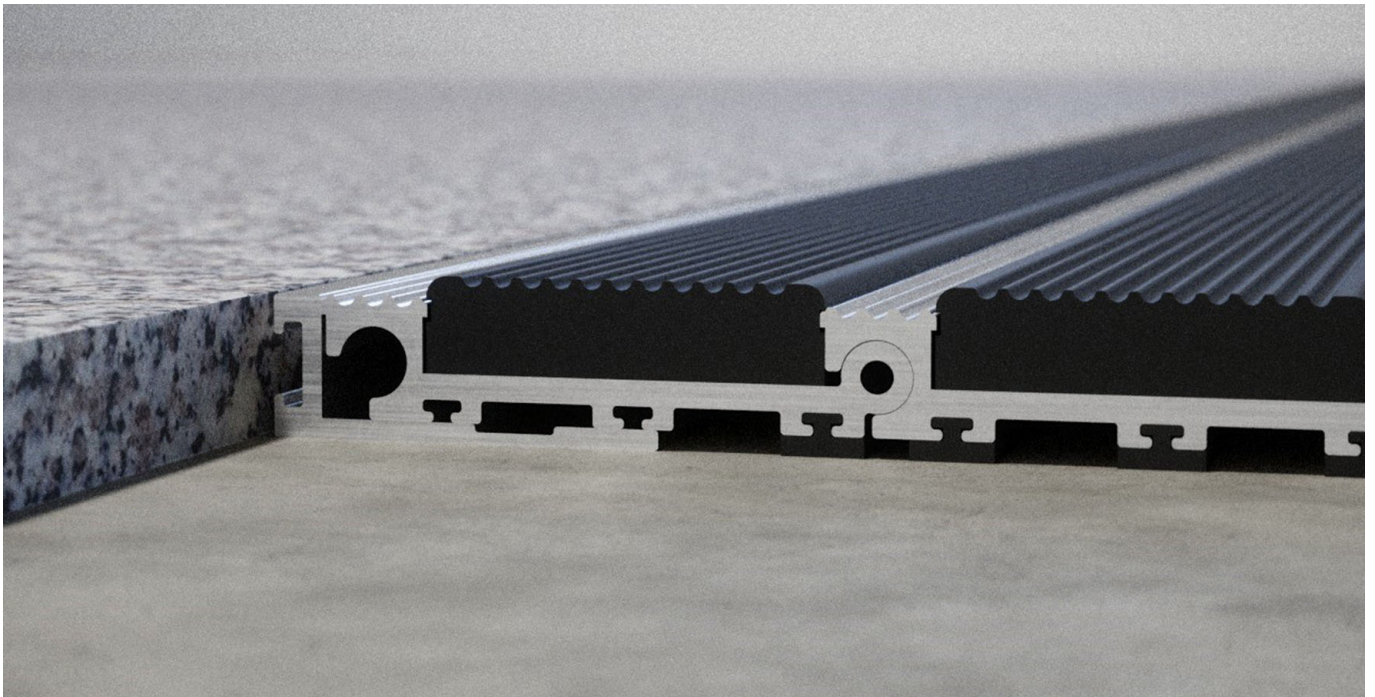
NEXUS Entrance Matting system is engineered to withstand heavy footfall, our range can be used in airports, shopping centers, supermarkets, department stores, cinemas, universities, healthcare centers, schools and universities, and is ideal for applications where performance under the severest of traffic conditions is required.



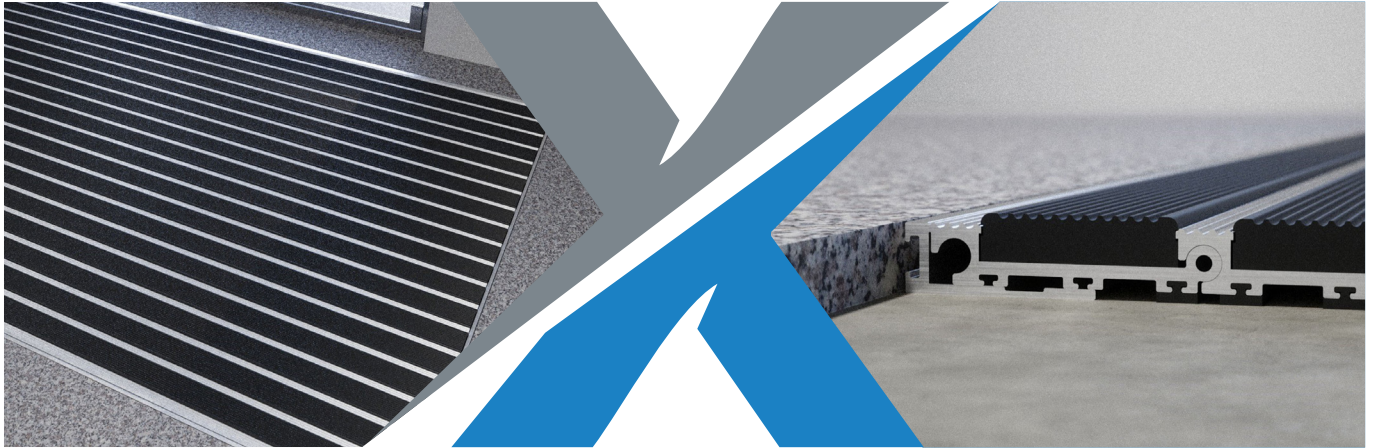
ANTI-SLIP HEAVY-DUTY

URFM 16

Aluminum-Rubber Profile



URFM 16



Entrance matting corrosion-resistant version can be used for outside as well as inside areas with normal to heavy traffic. It prevents dirt and moisture from entering the building and is available with anti-slip knurled rubber and aluminum. This type reduces noise generated from heavy traffic and is dimensionally stable and easy to clean.

ALUMINIUM PROFILE	Aluminium profile alloy 6063-T6, wall thickness up to 2.5 mm for laying directly into existing or new matwells.
UPPER	Anti-slip knurled EPDM Rubber or Neoprene, heavy-duty and UV-resistant conforming to DIN 7863.
UNDERNEATH	Base of the mat is mechanically fitted with rubber inserts for anti-slip and noise reduction.
PROFILE COLOURS	Material can be in mill finish aluminum or anodized silver, gold or bronze colors with black rubber insert.



Use in the outside area



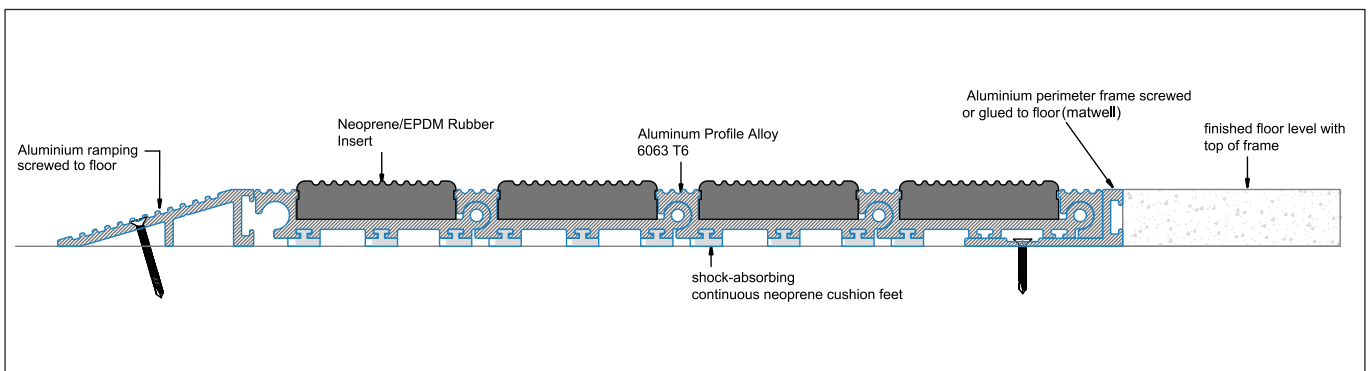
Use in the inside area



Wheelchair accessible



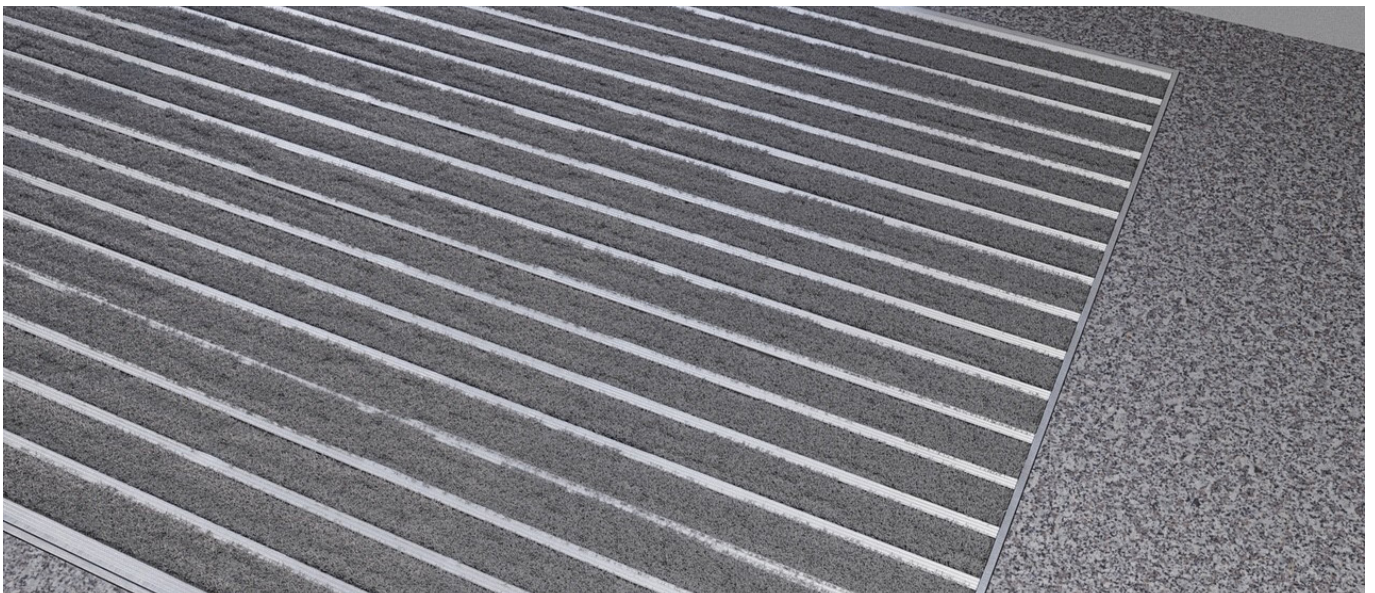
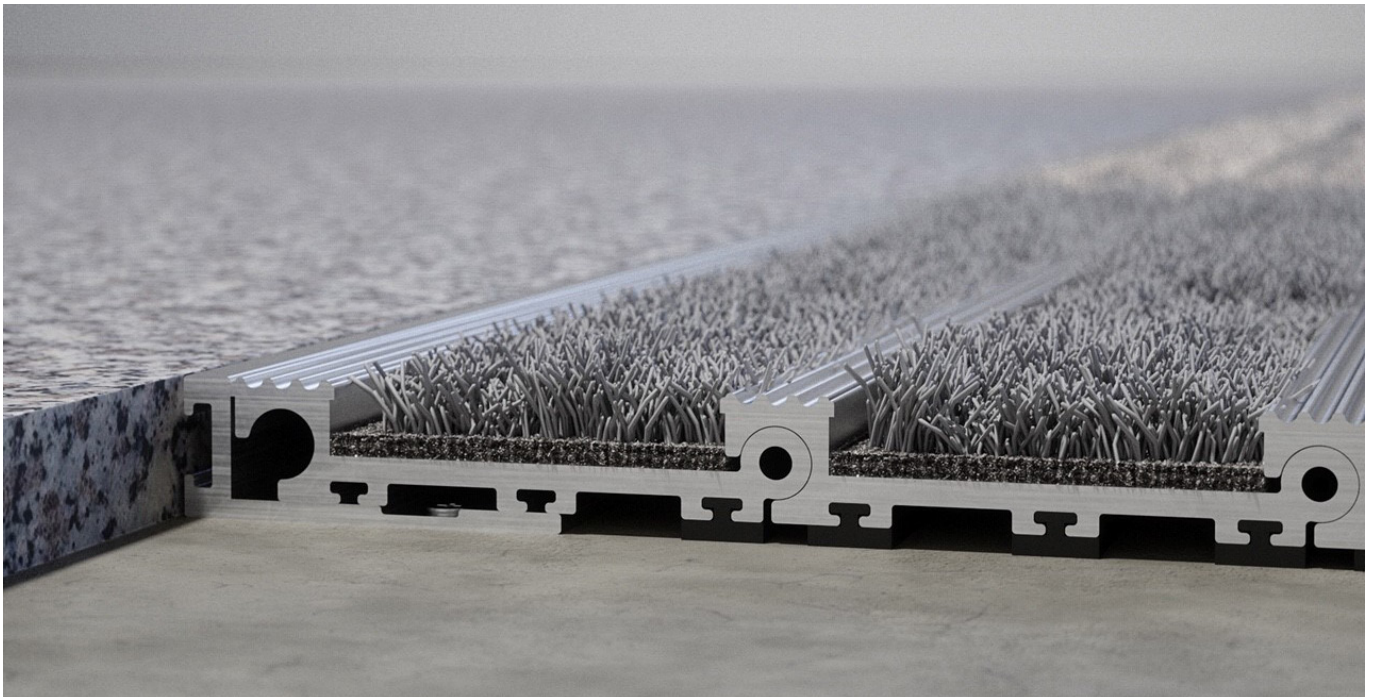
Recyclable



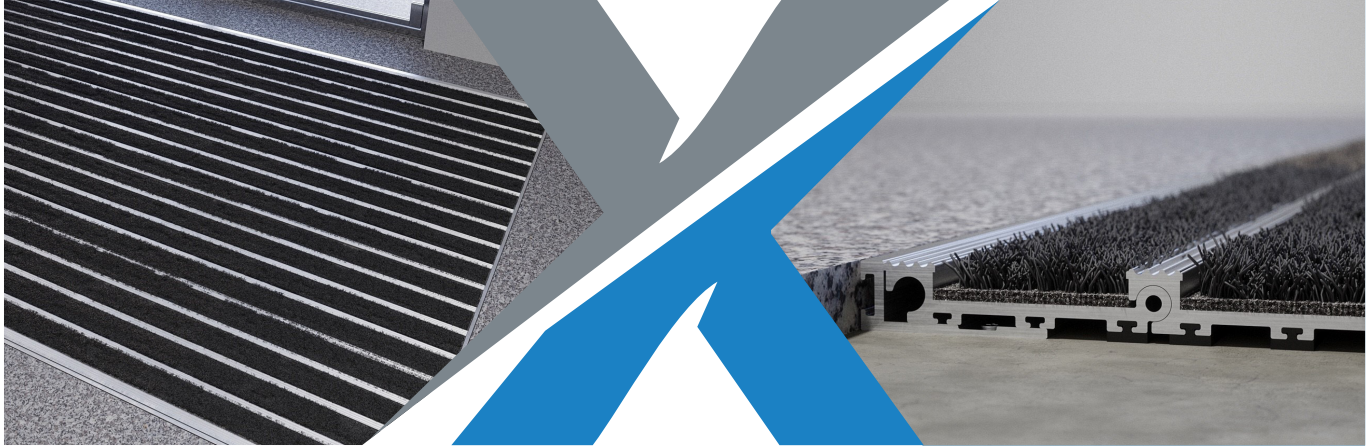
ANTI-SLIP HEAVY-DUTY

UCFM 16

Aluminum-Carpet Profile



UCFM 16



Entrance matting corrosion-resistant version for areas of heavy traffic. It prevents dirt and moisture from entering the building and is available with anti-slip knurled rubber and aluminum. This type reduces noise generated from heavy traffic and is dimensionally stable and easy to clean.

ALUMINIUM PROFILE

Aluminium profile alloy 6063-T6, wall thickness up to 2.5 mm for laying directly into existing or new matwells.

UPPER

Anti slip ribbed carpet insert, UV-resistant heavy-duty conforming to DIN 51130.

UNDERNEATH

Base of the mat is mechanically fitted with shock absorbing neoprene cushion pads for anti slip and noise reduction.

PROFILE COLOURS

Material can be in mill finish aluminum or anodized silver, gold or bronze colors with a variety of colors for carpet inserts.



Use in the outside area



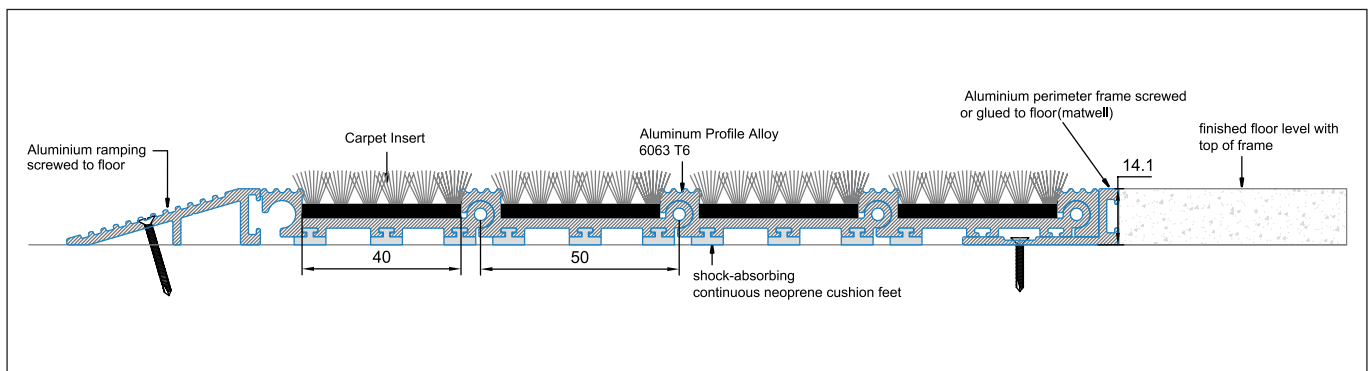
Use in the inside area



Wheelchair accessible



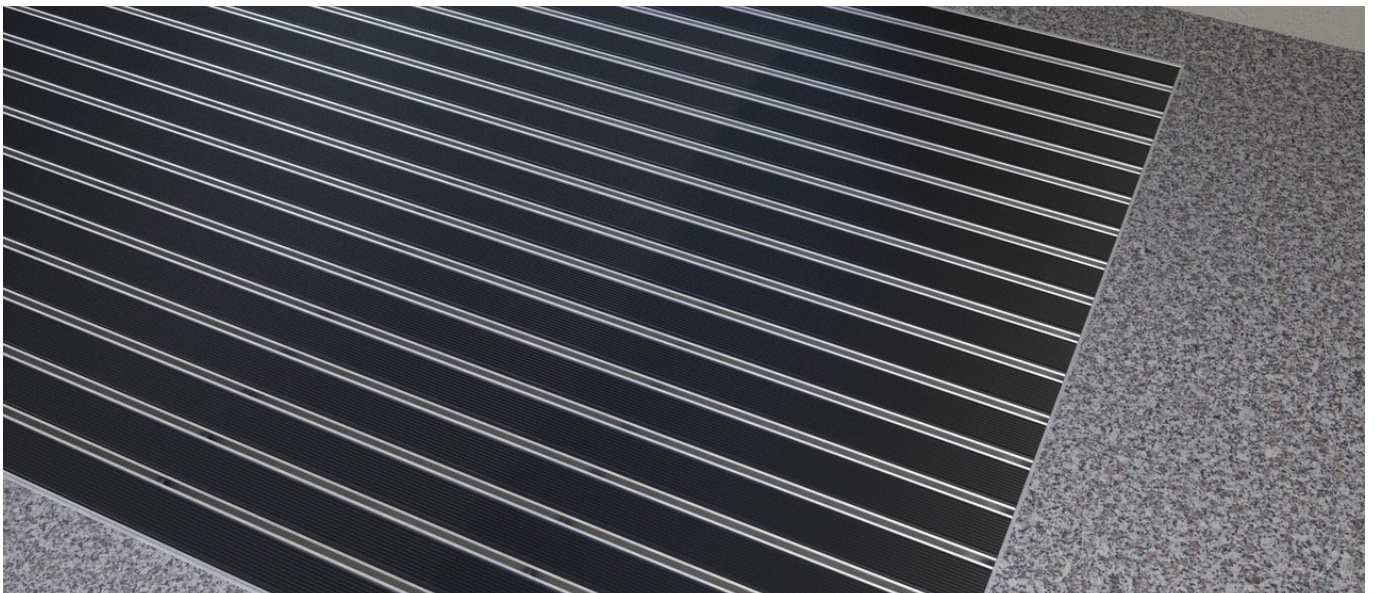
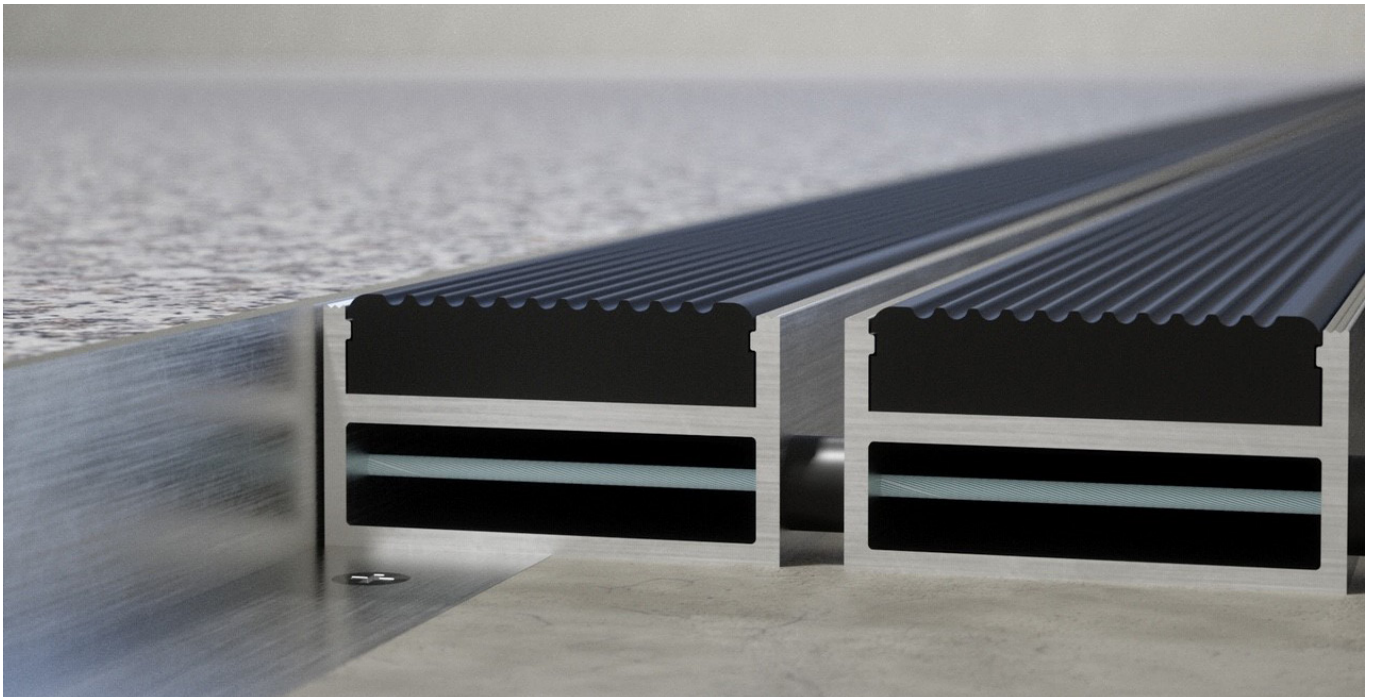
Recyclable



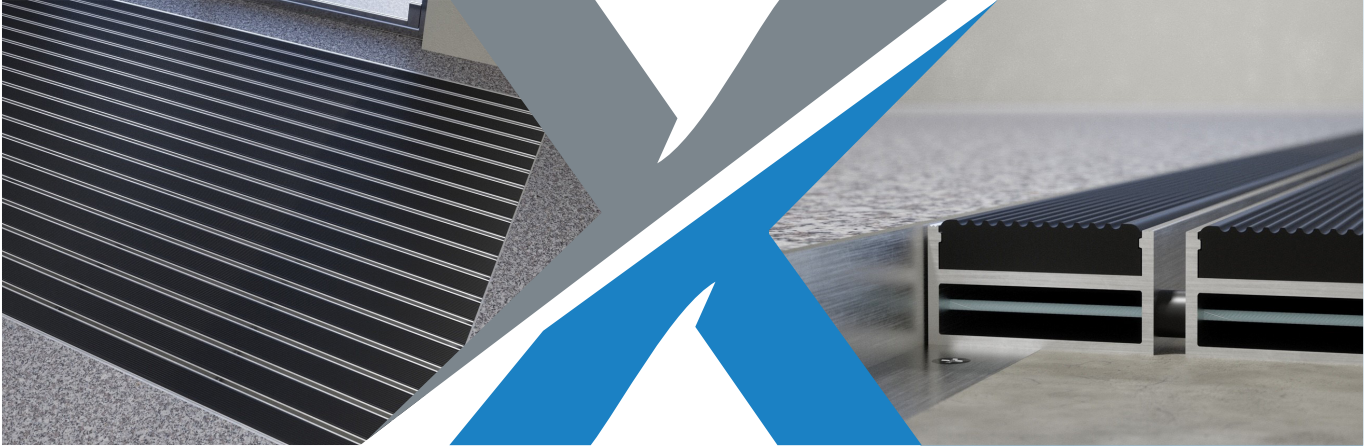
ANTI-SLIP HEAVY-DUTY

URFM 24

Aluminum-Rubber High Profile



URFM 24



High Profile entrance matting corrosion-resistant version with Neoprene or EPDM rubber inserts can be used for outside as well as inside areas with normal to heavy traffic. It prevents dirt and moisture from entering the building and is laid on a shock absorbing damping foam. This type reduces noise generated from heavy traffic and is greatly capable of collecting dirt. The panels are connected to each other through a stainless steel wire.

ALUMINIUM PROFILE

Aluminium profile alloy 6063-T6, wall thickness up to 2.5 mm for laying directly into existing or new matwells.

UPPER

Anti-slip knurled EPDM Rubber or Neoprene, heavy-duty and UV-resistant conforming to DIN 7863.

UNDERNEATH

Base of the mat is mechanically fitted with shock absorbing damping foam. panels are connected with stainless steel wire.

PROFILE COLOURS

Material can be in mill finish aluminum or anodized silver, gold or bronze colors with black rubber insert.



Use in the outside area



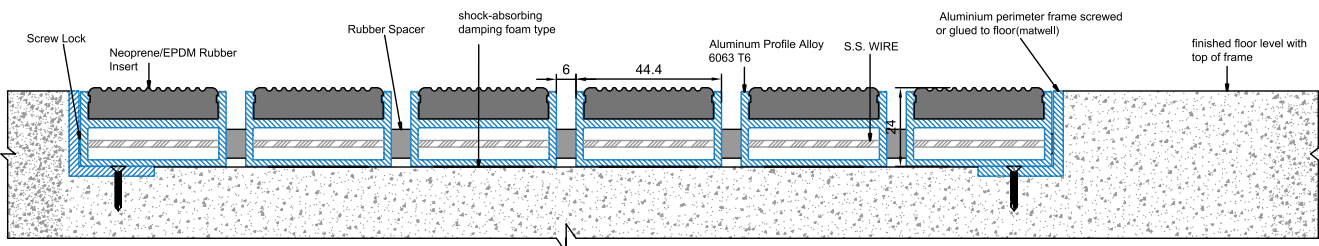
Use in the inside area



Wheelchair accessible



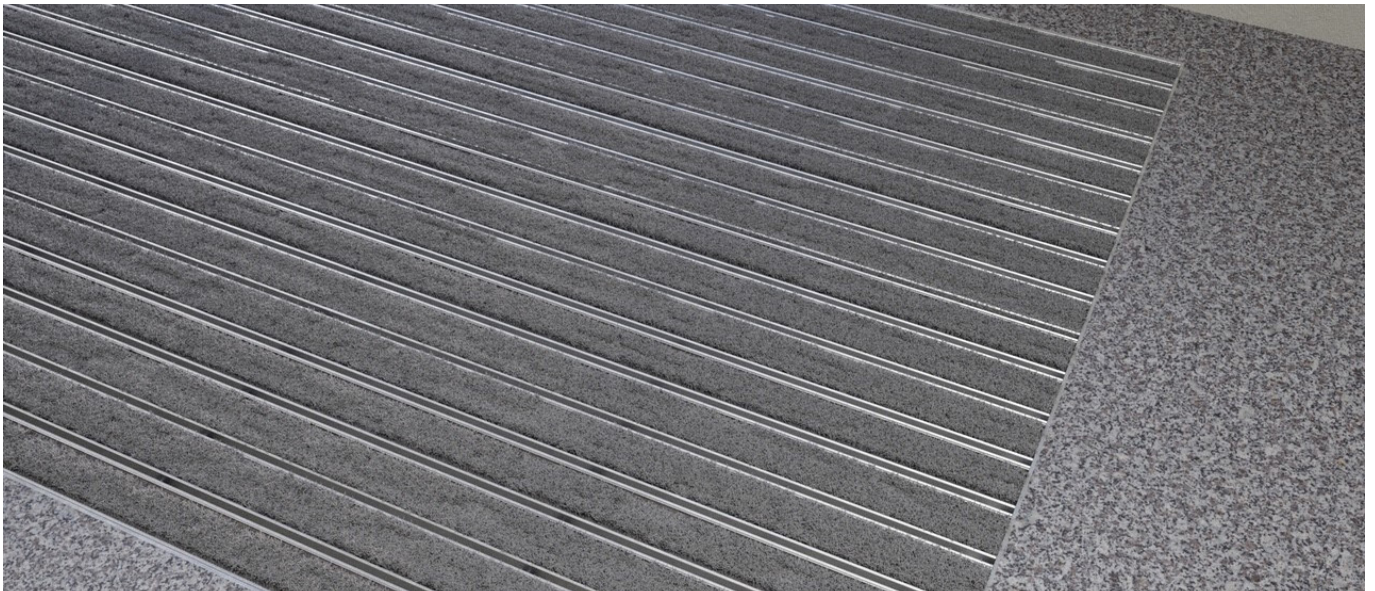
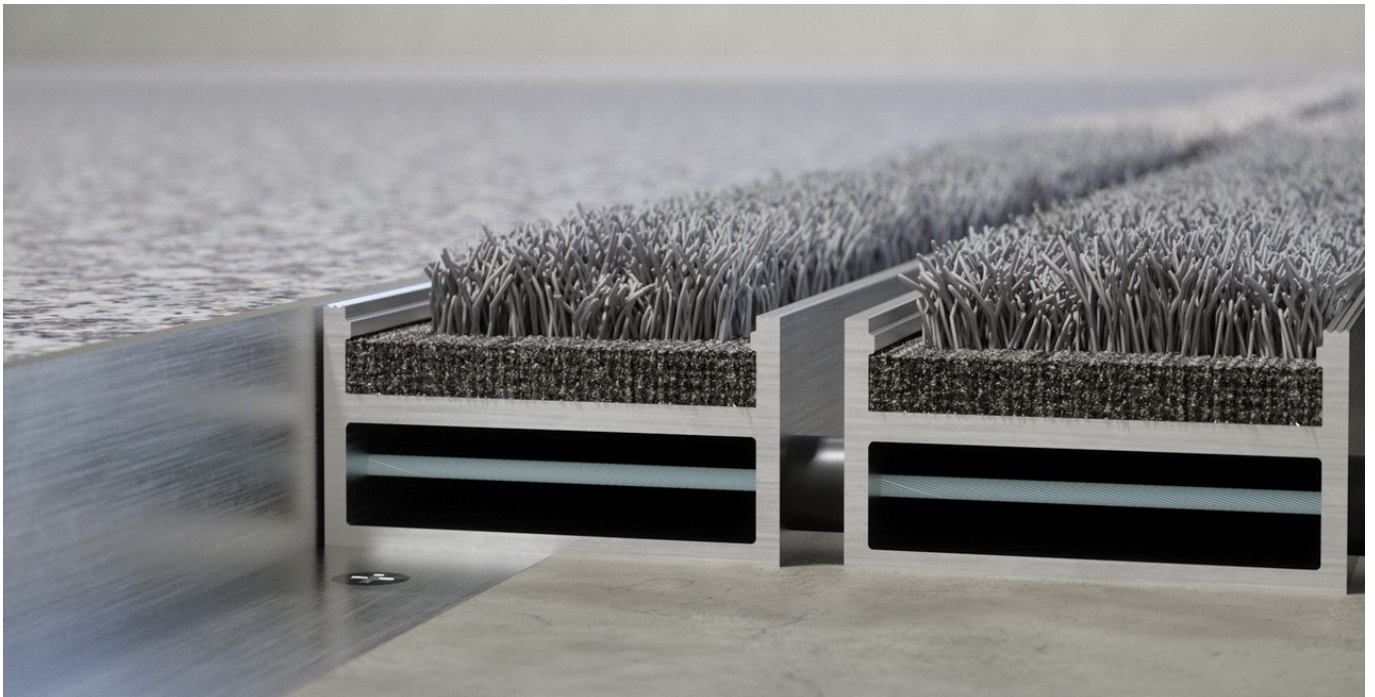
Recyclable



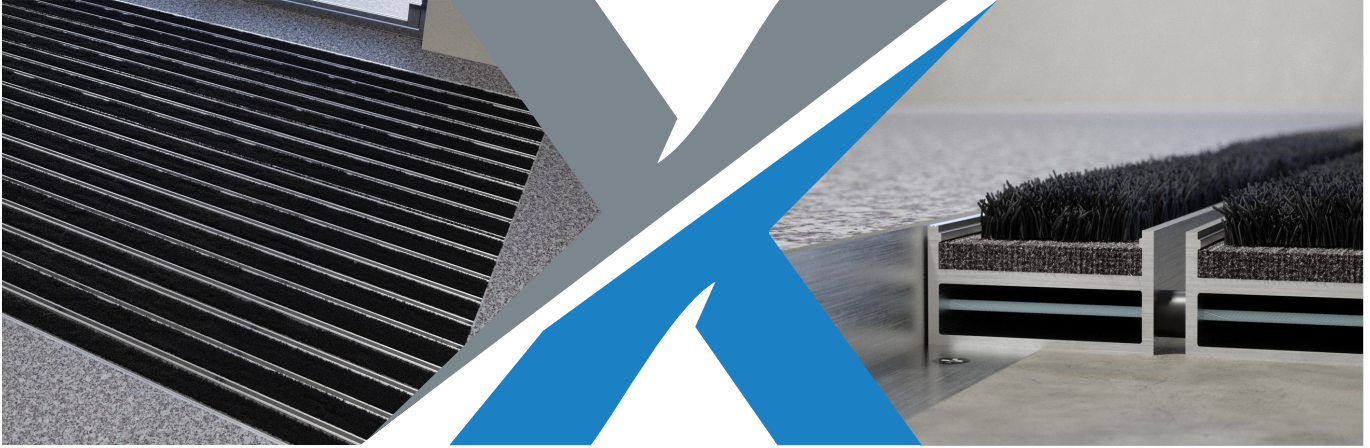
ANTI-SLIP HEAVY-DUTY

UCFM 24

Aluminum-Carpet High Profile



UCFM 24



High Profile entrance matting corrosion-resistant version can be used for outside as well as inside areas with normal to heavy traffic. It prevents dirt and moisture from entering the building and is laid on a shock absorbing damping foam. This type reduces noise generated from heavy traffic and is greatly capable of collecting dirt. The panels are connected to each other through a stainless steel wire.

ALUMINIUM PROFILE

Aluminium profile alloy 6063-T6, wall thickness up to 2.5 mm for laying directly into existing or new matwells.

UPPER

Anto slip ribbed carpet insert, UV-resistant heavy-duty conforming to DIN 51130.

UNDERNEATH

Base of the mat is mechanically fitted with shock absorbing damping foam. panels are connected with stainless steel wire.

PROFILE COLOURS

Material can be in mill finish aluminum or anodized silver, gold or bronze colors with a variety of colors for carpet inserts.



Use in the outside area



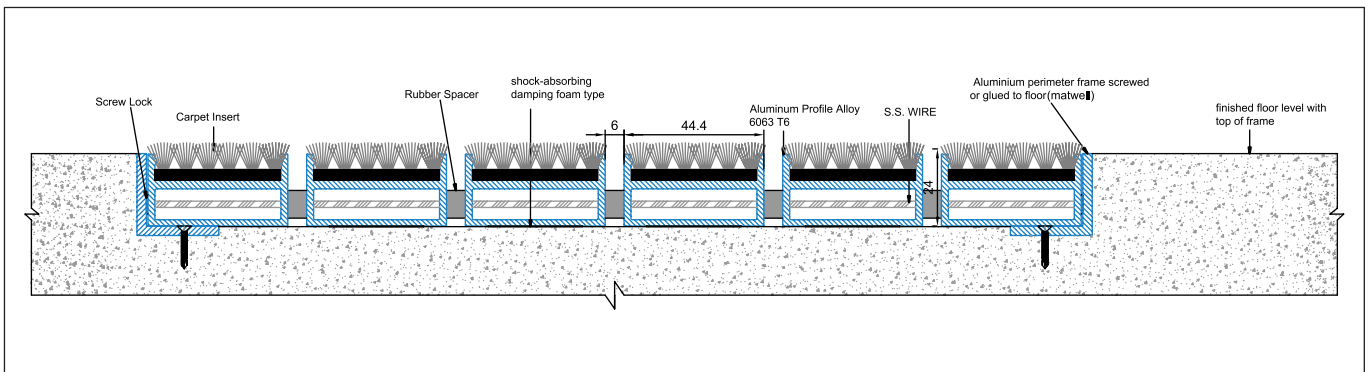
Use in the inside area



Wheelchair accessible



Recyclable



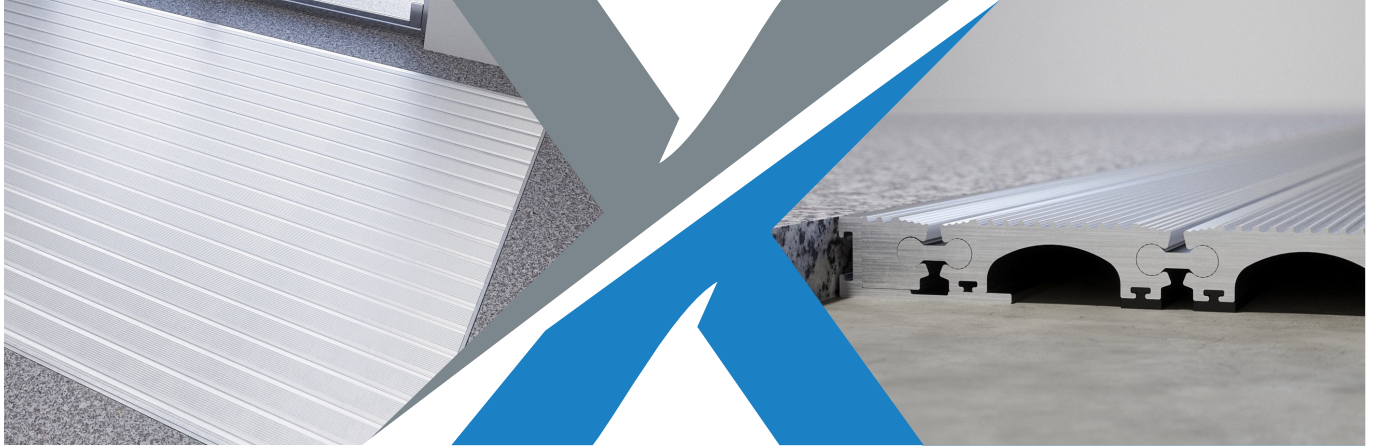
ANTI-SLIP HEAVY-DUTY

UAFM 17

Aluminum Profile



UAFM 17



Corrosion resistant all aluminum matting panel can be used for outside as well as inside areas with normal to heavy traffic. It prevents dirt and moisture from entering the building. Height of profile is 16.5 mm

ALUMINIUM PROFILE

Aluminium profile alloy 6063-T6, wall thickness up to 2.5 mm for laying directly into existing or new matwells.

UPPER

Aluminum strips alloy 6063-T6 attached through connectors. Size of each strip is 47 mm.

UNDERNEATH

Base of the mat is mechanically fitted with shock absorbing neoprene cushion pads for anti slip and noise reduction.

PROFILE COLOURS

Material can be in mill finish aluminum or anodized silver, gold or bronze colors.



Use in the outside area



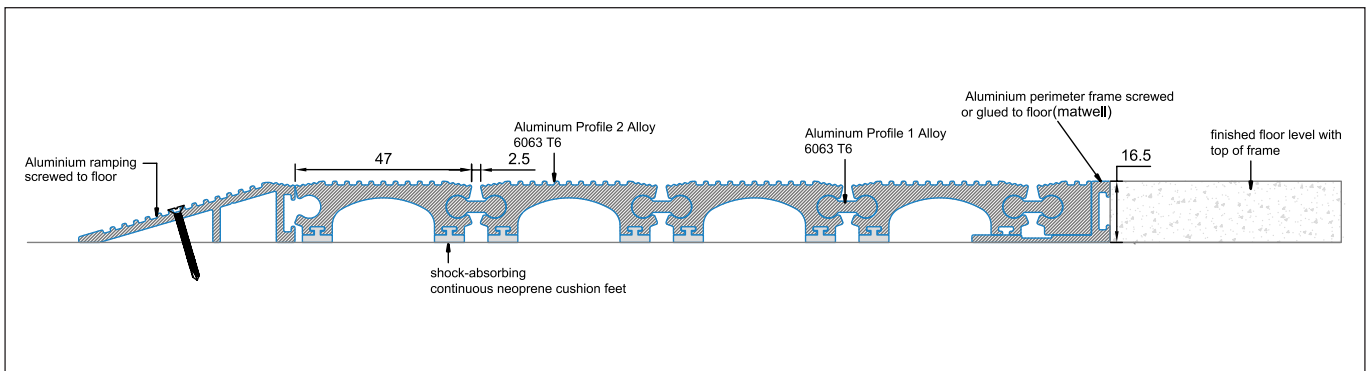
Use in the inside area



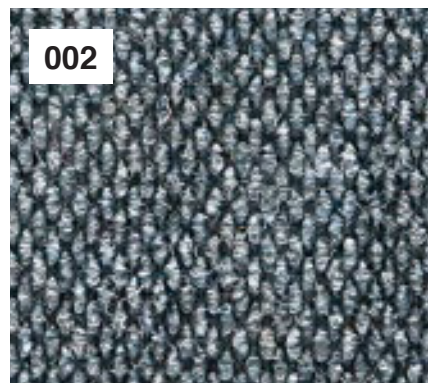
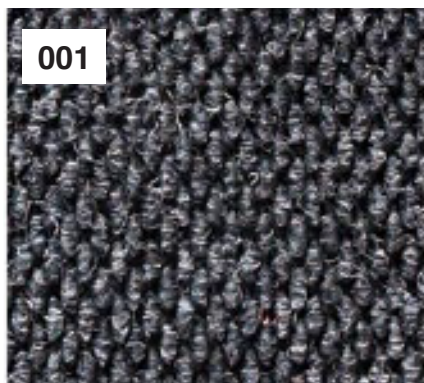
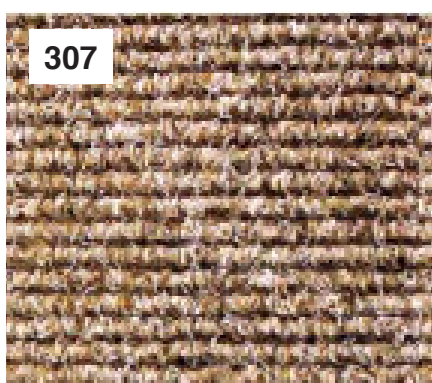
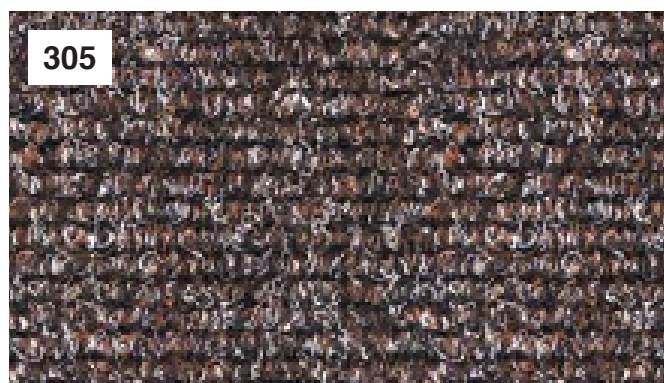
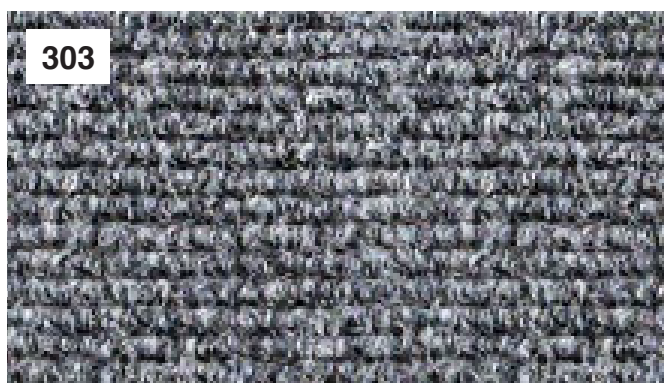
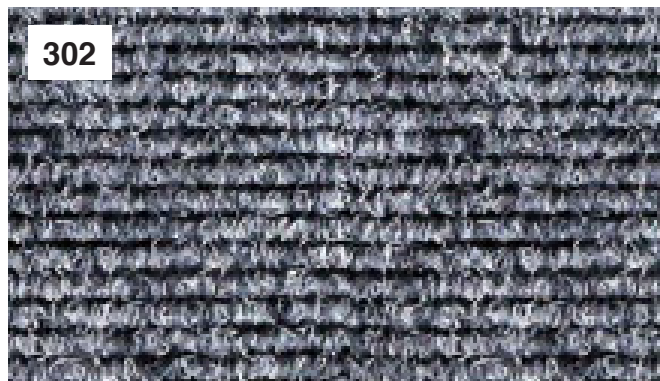
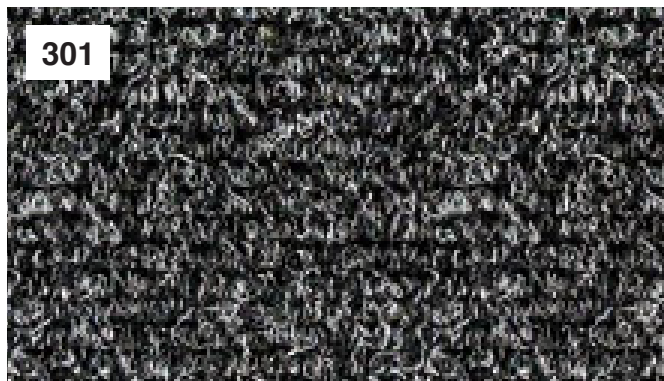
Wheelchair accessible



Recyclable



OVERVIEW OF CARPET COLORS



OVERVIEW OF CARPET COLORS

