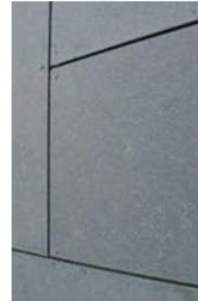
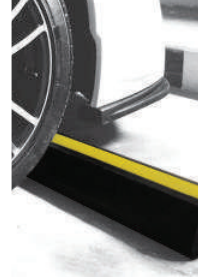
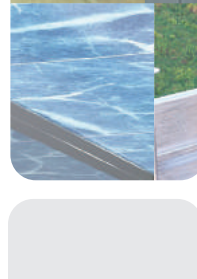
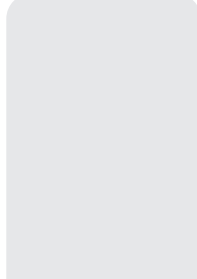
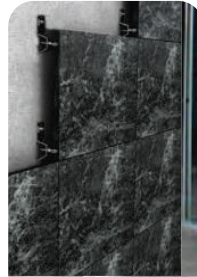
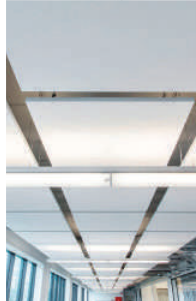
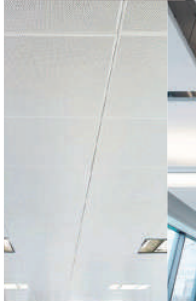
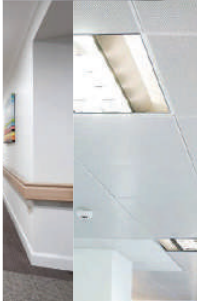
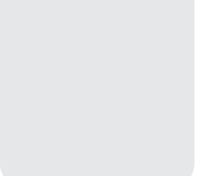
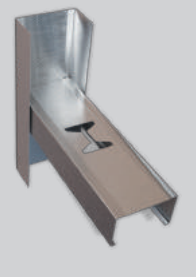




ARCHITECTURAL AND INDUSTRIAL PRODUCTS



www.unitech-ikk.com
www.ikkgroup.com



UNITECH
For Building and Construction Materials

ARCHITECTURAL AND INDUSTRIAL PRODUCTS



**NATIONAL SPECIALIZED CONSTRUCTION
TECHNOLOGIES CO.LTD.**



Architectural and Industrial Products

Index

About UNITECH	3
About Beta Contech	10
Mechanical Cladding Fixation (Stangle)	15
Waste Management System (Garbage & Linen Chutes)	20
Dry Wall & Ceiling Profiles	25
Metal Ceiling Grid Systems	27
Expansion Joint System	28
Profiles System by Nexus	30
Entrance Matting Systems by Nexus	31
Phenolic Partition Systems	32
Raised Access Floor System	35
Impact Protection Systems	39
Handrails	45
Metal Ceilings	46
Acoustical & Decorative Ceilings	47
Steel Doors	48
Gypsum System	49
Gypsum Boards & Accessories	50
Cement Boards and Accessories	51
Insulation Systems (Saudi Rockwool)	52
Insulation Systems (KIMMCO / SIIMCO)	53
Contact Information	55

ABOUT UNITECH

Unitech Introduction

Unitech is a proud Saudi company providing building and construction solutions that empower the regions' construction industry for the past 40+ years. We have been successfully providing solutions through mastering our main business activities: Design, Manufacture and Trade.



Design:

Provide Design & Engineering Solution to the construction sector, complying with international & local standards.



Manufacture:

Operating with Global Standards, we are widely recognized for our advanced light steel solutions and Hot-Dip Galvanization Facility.



Trade:

We are one of the region's largest Importer/Exporter of Building & Construction Materials.

Unitech is an ISO QMS 9001:2015 certified company and is a member of the US Green Building Council. Our experienced teams and operations are present across the Middle-East North Africa regions (MENA) and Pakistan, giving us an extensive regional network that benefits our clients and partners. We are also present in Europe via our design and engineering office in Stuttgart.

For more information, please visit: www.unitech-ikk.com

Mission & Vision

Our Vision

To be the Customer's First Choice...

Our Mission

We have the conviction to be the leader in building & construction industry through:

- A- Providing Excellence in services with Passionate & Educated sales force
- B- Strengthen culture through Unified Sense Of Purpose
- C- Developing Innovative Product Range which is Customer Centric
- D- Constantly providing Reputable and Quality services to the construction industry
- E- Attracting, Engaging, Retaining and Continuously Developing Talent

Our Strategy

Unitech's strategy continues to focus on accelerating its business throughout the region, to service the construction sector via superior products & solutions, backed up by a group of highly experienced people in the field. Unitech also aims to enhance its geographical presence in its areas of interest and where opportunities exist.

We combine a deep understanding of building and construction materials markets with a successful history of upgrading our products and developing our processes.

We have the qualified employees, the know-how and the products to service major construction projects, medium sized to mega projects taking in care our positive contribution to our societies.

We thrive towards excellence by acknowledging:



Customer Satisfaction



Partner and Supplier Relations



Employee Retention



Positive Influence on Society and Environment

Our Employees

We are a company that prides itself on its 'family' culture and we seek out high-caliber people. We are a company that has, at its core, a team philosophy that is clearly apparent each and every day - there is a real sense of being there for one another.

We believe in nurturing the skills of our team members and providing growing levels of responsibility. Our people bring unique skills, energy, expertise, experience and perspectives to our workforce.

Unitech's family of employees consists of experienced, well-motivated and dedicated team of engineers, technicians, sales executives and management staff. This team is committed to serve our customers, with the best solutions available in the market.

Our Journey

40+ Years of Excellence

Since 1979, having been set to become an independent company under the framework developed by Sheikh Isam Kabbani, Unitech started its journey of success with confidence and enthusiasm, hard work and care to detail and a commitment to become the best within its industry.

Its dedicated people could only imagine what the future could bring to this newly established entity. Unitech's journey of success has been marked with outstanding achievements and superior accomplishments. Year by year, Unitech has been acknowledged as the "First Choice for Building & Construction Material" by major construction consultants in the region, governmental authorities, well-known contracting and project development corporations.

We have obtained invaluable knowledge about the construction industry in general, providing specialized solutions to construction projects throughout MENA region. From a couple of outlets in Saudi Arabia, Unitech today is present all over the Kingdom and in several countries throughout the region providing its products and solution to various locations worldwide.



Est. 1979

THE BEGINNING

Unitech was established in the Western Region of KSA as a Sales Company selling basic construction material.

During the same year, another branch was established in the heart of the kingdoms capital, Riyadh.



1980 to 1989

AGE OF GREAT RISK

Unitech Dammam was open for business in the oil-rich eastern coast of Saudi Arabia.

Within these 10 years the idea of in-house manufacturing facility was born and Specialized Factory for Steel Products (SFSP) was established in Riyadh.



1990 to 1999

AGE OF GROWTH

Branches of Unitech were established in Makkah, Madina, Khamis Mushayt and Jubail.

The need to increase its range of products and the necessity to have production lines for mass production lead to the decision to move the SFSP Factory from Riyadh to Jeddah.

Pioneering Construction Since 1979

We are constantly evolving in order to become more flexible in our operations, more sustainable in our societies, and more innovative in conducting our business.

By delivering superior products tailored to the specific construction needs, ambitious solutions, and an outstanding customer service, we serve today's needs through developing tomorrow's markets.

Helping construction projects experience success is what fueled its days. Unitech is keen to continue offering superior products, a wide spectrum of solutions, governed by our top-notch management style.

Such aspirations require trust in our responsibilities. Our Responsibilities for the future and with this in mind we continue to target excellence with committed efforts.



2000 to 2015

AGE OF CONSTRUCTION BOOM

Qassim, Hofuf and Yanbu Branches were inaugurated in KSA and branches outside KSA were established in UAE, Egypt, Lebanon, Oman, Jordan and Germany in order to facilitate the construction boom in the Middle East. During this period SFSP state of the art facilities were launched in DIC UAE and Unitech thrived, marking some of the best years in business.



2016 to 2019

AGE OF GREAT CHANGE

This period, marked the age of great change in order to align with the economic shift in the GCC and the world in general.

Company wide right sizing initiatives were taken especially in KSA to align with the kingdoms ambitious vision 2030 and during this period the upgraded SFSP state of the art facilities were launched in JIC 3 KSA.



2020 & Beyond

NEW FRONTIER

This period marks the expansion of Unitech into the South and Central Asian territories. We aim to cater these markets and play an active role in these countries development.

During 2020, Unitech Pakistan was officially inaugurated and marked the entrance of Unitech into Asian Market.

Our Manufacturing Arm

SFSP

SFSP is a leading manufacturer and fabricator of light steel construction products in the region, servicing the construction sector through its state of the art facilities which are spread all over the MENA region. Products of SFSP are manufactured from quality raw material according to the relevant international standards to meet all kinds of construction projects requirements, such as MEP, façade, blockwork & waste management systems.

Commitment to Quality

Our commitment to quality is clearly revealed in the way we do our business; our processes, our close interaction with our clients as well as the strict product inspection procedures. To achieve this, we have implemented quality systems & processes that are continually being improved to satisfy our customer's needs.

Product Development

Product development process is substantial to the success of our business. We leverage all resources to provide up-to-date reliable products, environmentally friendly, durable to withstand the toughest weather conditions. Our engineers are constantly testing the products, seeking to present a combination of performance and quality across all our product ranges.

For more information, please visit:
www.sfsp-ikk.com

Value Chain

Our value chain starts up with the quality of the raw materials and ends up in client satisfaction. Our business practices backed up by all technologically essential business elements are supported by an efficient logistics, warehousing and delivery system that maintains a valuable supply chain for products.

The value chain is integrated in our business module, giving us strength and preserving our good reputation gained through the past 4 decades.

Engineering Specialty

Our products development engineers integrate their vast knowledge to provide the perfect solution to projects within the required specifications and time-frame.

The products development department maintains highly skilled calibers with a dedication towards efficient and reliable solutions even in the most complicated cases where delicacy and skillful approaches are indispensable.

Design and Product Safety

Our design and engineering office in Stuttgart ensures our products comply with relevant European and international standards of fabrication, taking into attention the safety factors which govern the public safety of projects.

Sustainability and Responsibility

We are constantly working hard to reduce our environmental footprints while maintaining the high quality and safety standards. We have set our targets to become three times more efficient in the next 10 years. Our responsibility towards our stakeholders is valued through our positive contributions towards our colleagues, our business partners and our communities as well.


Our Design Office



UNITECH DEUTSCHLAND is a "Design & Engineering" Office. Unitech Germany support Unitech & SFSP operations through well-informed cadre of engineers. They help our customers from conception to the completion by delivering design, engineering and project management services.

Thanks to our multidisciplinary team in Unitech Germany and their expertise, we assist you in your ambition to develop your innovation, your engineering and your organization. Our goal is to serve our clients through these elements:

- Excellent in engineering ideas and solutions
- High quality in performance
- Firmness on meeting deadlines

The background is a solid blue color with several overlapping, semi-transparent, rounded rectangular shapes in various shades of blue, creating a layered, geometric effect.

ABOUT BETA CONTECH

Beta Contech is specialized in advanced architectural and industrial products ranging from Raised Access Floorings, Architectural Expansion Joints, Building Impact Protection Systems, Toilet Partitions, and others. The company operates within the GCC and MENA countries and has a wide reputation among major contractors and consultants. The company has successfully completed major projects in the region. Beta Contech represents well-known European, American and Australian manufacturers in the region such as: Tate, Migua, Pawling, Progress Plast, SFSP and others. The company offers a variety of products, amongst are: Raised Access Floorings, Expansion Joint Systems, Handrails & Corner Guards, Speed Bumps & Bumper Guards, Entrance Mats, Rubber Tiles, Toilet Partitions, Technical Profiles, as well as Garbage & Linen Chutes. Beta Contech does not only sell the product. Its role is also to apply the product through proper application methods where required.

Mechanical Cladding Fixation (Stangle)

Brand: SFSP

Stangle Cladding Fixation includes design, calculation and production of several types of mechanical fixings and accessories used for cladding purposes. Stainless and galvanized steel are among the various materials used in the fabrication.



Aluminium System for Stone Cladding

Brand: SFSP

UNITECH provide a variety of aluminum fixing system of stone cladding installations.

Unitech systems are applicable for:

- Building external & internal cladding
- For Horizontal & vertical cladding
- Variety of type & thickness of stone cladding.



Waste Management Systems (Garbage & Linen Chutes)

Brand: SFSP

Chutes are very convenient, simple and low cost method of controlling and disposing of refuse and linen. SFSP Chutes meet the most stringent requirements of environmental health and safety. Chutes are used as original equipment in new buildings, such as: Hotels, Hospitals, High Rises and Residential Towers.



Drywall & Ceiling Profiles

Brand: SFSP

Gypsum Boards are considered among the most economic and ideal way for wall partitioning. Easy to install, saves time and money, gypsum boards can be used as a backing for wall treatments such as wall paper, fabric, tile and wood paneling or it can simply be painted. SFSP provides a complete product range for drywall and ceiling constructions. Studs, Runners, Furring Channels, Ceiling Channels, and Wall Angles are among the range of products produced according to relevant international standards to service the dry wall installers.



Architectural Expansion Joints

Brand: NEXUS | Manufactured in: SFSP

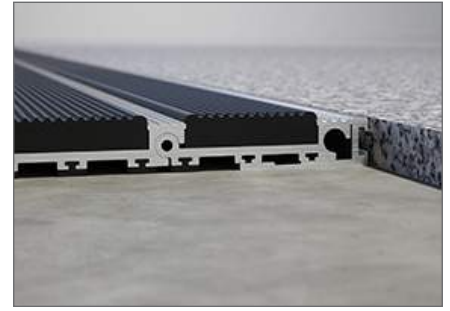
Our variety of expansion joints includes profiles for walls and floors, profiles for seismic movements, watertight profiles. Our products suit pedestrian as well as heavy load traffic areas.



Entrance Matting System by Nexus

Brand: NEXUS | Manufactured in: SFSP

Nexus Entrance matting systems provides heavy duty entrance mats, composed of aluminium profiles with carpet, brushes or rubber inserts. For any design of any shape, being round, square, oval, or any other symmetrical or asymmetrical shape, Nexus offers a variety of entrance matting profiles



Profiles by Nexus

Brand: NEXUS | Manufactured in: SFSP

Nexus offer comprehensive solutions for the construction industry ranging from Expansion Joint Covers and Fire Barriers to Entrance Matting Systems, Wall and Floor Profiles, Tactile Solutions, etc... NEXUS range of products is manufactured according to most common international standards to meet the requirements of commercial, residential, governmental, transportation, healthcare and educational projects.



Phenolic Compartment by CUBIX

Brand: Cubix Toilet Partitions

CUBIX phenolic compartment and partition systems are manufactured and customized to meet the precise needs of simple to complicated projects with its top-notch finish, quality of material and within a timely delivery. A complete solution with a wide selection of colors and textures are available.



Raised Access Flooring by PIXEL

Brand: Pixel Access Flooring

PIXEL Raised Access Flooring offers comprehensive solutions of High Tech Raised Access Flooring Systems for the construction industry. PIXEL Raised Access Flooring are manufactured according to most common international standards to meet the requirements of commercial, residential, governmental, transportation, healthcare, and educational projects.



Raised Access Floor System

Brand: Tate / PolyGroup / Apsilon

Raised Access Floorings are used for general offices, call centers, computer rooms, pumping stations, control rooms, etc. The core of the panel is either from wood, calcium sulphate, or cementitious composite providing excellent lateral stability along with easy access for low, medium and heavyduty applications with adjustable pedestals. Stringered or stringerless understructure with various types of coverings are available including highpressure laminate panels.



Impact Protection Systems

Brand: U-GUARD

U-Guard provides the most suitable way to protect your facilities from damage caused by traffic. Through a large selection of heavy duty items designed to suit most applications, U-Guard offers a set of material, each serves to provide the required shield to the facility.



Handrails

Brand: Pawling

Pawling Systems range of Handrails offer a wide variety of styles, colors and materials for all types of facilities, applications and budgets. A near endless list of product options including PVC, Wood and Stainless Steel. Or a combination of these materials to provide you with the finish and design you want.



Impact Protection Systems

Brand: Pawling

- INTERNAL | Architectural & Industrial Impact Protection System
 - EXTERNAL | Speed Bumps & Bumper Guards
 - EXTERNAL | Heavy Duty Wall and Corner Guards
-



Metal Ceilings

Brand: BMG

Metal ceilings are usually specified in modern buildings for many valuable reasons. It is considered as high performance ceiling due to the increased life span and durability. The high recyclable content also makes it one of the most valuable ceiling solutions in the new building code.



Acoustical & Decorative Ceilings

Brand: Rockfon

Rockfon is a leading provider of acoustic stone wool and metal ceiling solutions and suspension systems. Rockfon complete ceiling systems are a fast and simple way to create beautiful, comfortable spaces. Easy to install and durable, they protect people from noise and the spread of fire, while making a constructive contribution toward a sustainable future. Rockfon develops acoustic ceiling solutions directly addressing important indoor environment considerations and requirements by balancing high technical performance demands with modern design trends.



Steel Doors

Brand: BMG

Doors are a legal requirement for all commercial properties, whether industrial environments, local authority buildings, leisure, hospitality, healthcare, education or retail offices.



Gyproc System & Solutions

Brand: Gyproc

Gyproc systems have been purpose-designed by experienced technicians to meet the challenging needs of today's increasingly demanding buildings. Whether it is straight forward partitions or sophisticated shaft wall systems for high speed lift shafts - every aspect is taken into consideration, from performance to speed and ease of installation - and from safe handling to the ready availability of components across Middle East.



Mada Plus Systems

Brand: Mada

CUBIX phenolic compartment and partition systems are manufactured and customized to meet the precise needs of simple to complicated projects with its top-notch finish, quality of material and within a timely delivery. A complete solution with a wide selection of colors and textures are available.



Gypsum Boards & Accessories

Brand: Gyproc / Mada / UMI / Gboard / UBoard

PIXEL Raised Access Flooring offers comprehensive solutions of High Tech Raised Access Flooring Systems for the construction industry. PIXEL Raised Access Flooring are manufactured according to most common international standards to meet the requirements of commercial, residential, governmental, transportation, healthcare, and educational projects.



Cement Boards and Accessories

Brand: U Board

U-Boards products are manufactured according to international standards.



Insulation Systems

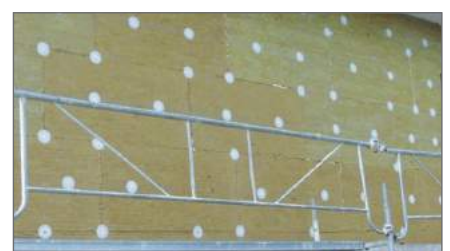
Brand: Saudi Rockwool

Buildings are subjected to different climatic conditions like hot in summer and cold in winter as well rain which have adverse effect on the building structure and their strength as well causes uncomfot to the occupant by heat gain in hot climatic conditions and Heat loss in Cold climate. External walls and Roof of the Building contribute to the heat gain and loss to external ambient and it easily disturbs the psychometrics inside of the Building.



Brand: KIMMCO / SIIMCO -ISOVER

KIMMCO-ISOVER products offer solutions to enable the construction sector to meet the increasing demand for ecofriendly and energy efficient building materials. Stone Wool (Rock Wool) insulation products play a key role in the successful development of green and fire safe building solutions, as well as efficiently insulated industrial equipment.



Mechanical Cladding Fixation (Stangle)

Brand: SFSP



Stangle Cladding Fixation includes design, calculation and production of several types of mechanical fixings and accessories used for cladding purposes. Stainless and galvanized steel are among the various materials used in the fabrication.

Standards

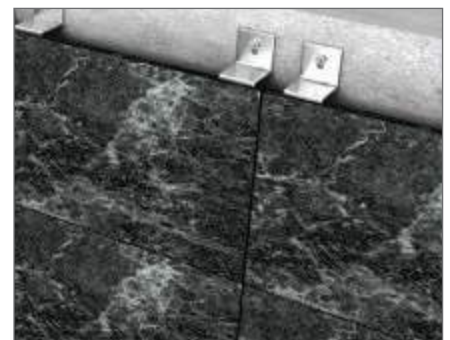
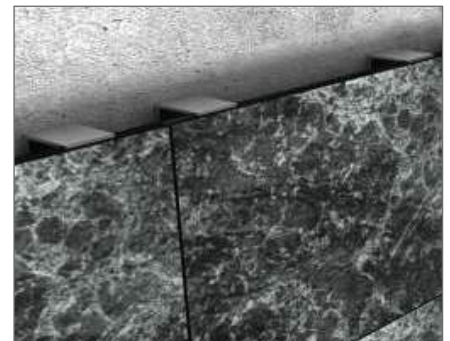
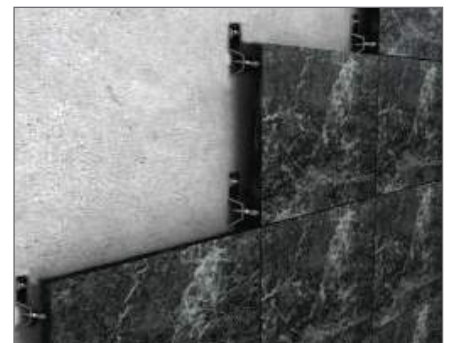
- ASTM A276 / A276M
- ASTM A666 - 15
- BS 8298-1:2010
- BS 1449-1.1:1991
- BS EN ISO 3506-1:1998
- BS 5950-1:2000
- BS EN 1991-1-4:2005+A1:2010
- BS EN 10277:2018
- DIN EN 1992-1-1: 2013
- DIN EN 1992-3: 2011
- DIN 1053-41: 2018
- DIN 18516-3: 2018
- DIN EN 1994-1-1: 2010
- DIN EN 1993-1-1: 2017-09

Material

- SS304
- SS316
- SS316L
- SS316TI
- S235JR-MG
- S235JR-HDG

Brackets

- L - Bracket (Standard & Serrated)
- L - Bracket (Standard & Serrated) Up Angle
- L - Bracket (Standard & Serrated) Down Angle
- L - Bracket (Standard & Serrated) Up and Down Angle
- Z - Bracket with Back Leg
- Omega Bracket
- Fishtail Up & Down
- Fishtail with Pin
- Load bearing and restraining corrugated stud



TYPES OF FIXINGS

Principles for the Fixing of Building Cladding

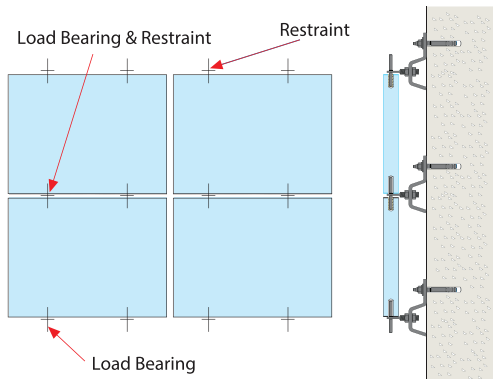
The fixing systems for building cladding are composed of several elements (angles, expansion bolts, screws, nuts, washers, etc), each of which shall present the appropriate mechanical features in respect to the requirements posed by the specific project.

Any type of cladding, once fixed, is subject to two primary types of load:

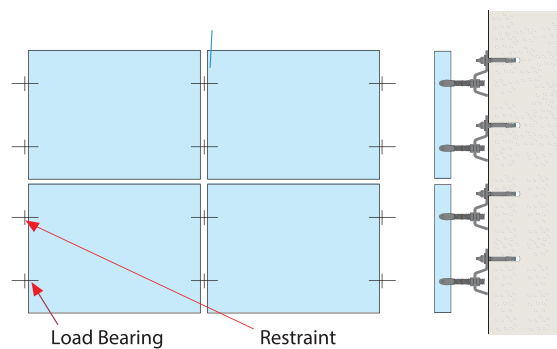
- Permanent load (the dead load), due to the weight of the cladding itself;
- Variable load (applied loads), due to the wind, thermal expansions, seismic motions, etc.

FIXING VARIATIONS

- Fixing in the horizontal joint



- Fixing in the vertical joint



L-Bracket (Standard & Serrated)

Type ST- 500 1100 With Pin

Materials: SS304, SS316, SS316L, SS316TI, S235JR-MG, S235JR-HDG



L-Bracket (Standard & Serrated)

Type ST- 500 1200 Up and Down Angle

Materials: SS304, SS316, SS316L, SS316TI, S235JR-MG, S235JR-HDG



L-Bracket

Type ST- 500 1300 Up Angle

Materials: SS304, SS316, SS316L, SS316TI, S235JR-MG, S235JR-HDG



L-Bracket

Type ST- 500 1400 Down Angle

Materials: SS304, SS316, SS316L, SS316TI, S235JR-MG, S235JR-HDG



Z-Bracket with Back Leg

Type ST- 600 1100

Horizontal Joint

Materials: SS304, SS316, SS316L, SS316TI, S235JR-MG, S235JR-HDG

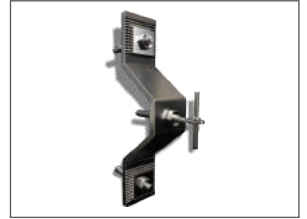


Omega Bracket

Type ST- 700 1100

Vertical Joint

Materials: SS304, SS316, SS316L, SS316TI, S235JR-MG, S235JR-HDG



Type ST- 800 1100

Fishtail Up & Down

Materials: SS304, SS316, SS316L, SS316TI, S235JR-MG, S235JR-HDG

Fixing in Concrete and solid block

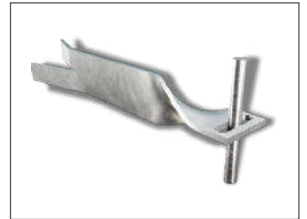


Type ST- 800 1200

Fishtail with Pin

Materials: SS304, SS316, SS316L, SS316TI, S235JR-MG, S235JR-HDG

Fixing in Concrete and solid block



Type ST- 900 1100

Load bearing and restraining corrugated stud.

Material: SS304, SS316, SS316L, SS316TI, S235JR-MG, S235JR-HDG



Aluminium System for Stone Cladding

Brand: SFSP



UNITECH provide a variety of aluminum fixing system of stone cladding installations.

Unitech systems are applicable for:

- Building external & internal cladding
- For Horizontal & vertical cladding
- Variety of type & thickness of stone cladding.

FEATURES:

Unitech aluminum systems are designed and calculated to provide a practical & safe solutions of stone cladding.

MATERIAL:

Unitech aluminum systems are produce mainly from aluminum alloy Aluminum 6082-T6 which is the most common used alloy of aluminum.

Wide range of aluminum profiles with different shapes to support different types of stone cladding.

Fasteners and anchors are produced from stainless steel 304 & 316 grades.

STONE FIXING SYSTEM-01

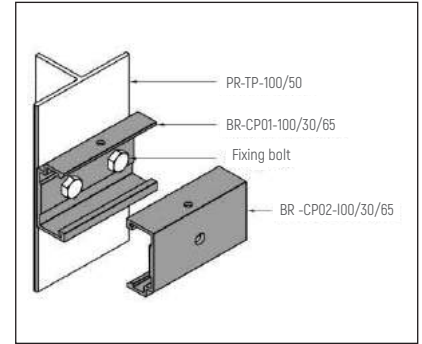
Undercut Fixing

Application

Cladding fixing system for stacked tile pattern.

Materials

Profiles & Brackets - Aluminum 6082-T6
Anchors & fasteners - SS316 & SS304



STONE FIXING SYSTEM-02

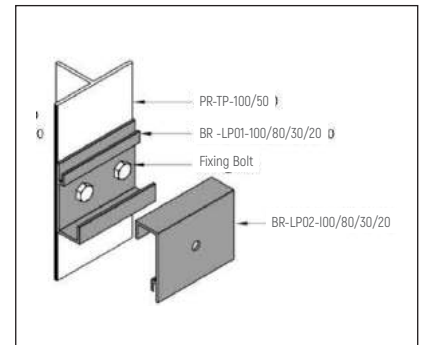
Undercut Fixing

Application

Cladding fixing system for stacked tile pattern.

Materials

Profiles & Brackets - Aluminum 6082-T6
Anchors & fasteners - SS316 & SS304



STONE FIXING SYSTEM-03

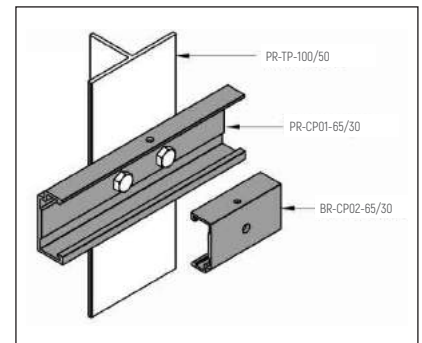
Undercut Fixing

Application

Cladding fixing system for stacked tile pattern.

Materials

Profiles & Brackets - Aluminum 6082-T6
Anchors & fasteners - SS316 & SS304



STONE FIXING SYSTEM-04

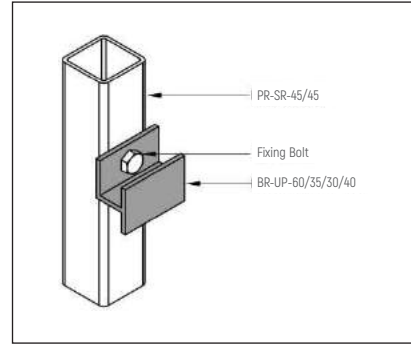
Undercut Fixing

Application

Cladding fixing system for stacked tile pattern.

Materials

Profiles & Brackets - Aluminum 6082-T6
Anchors & fasteners - SS316 & SS304



STONE FIXING SYSTEM-05

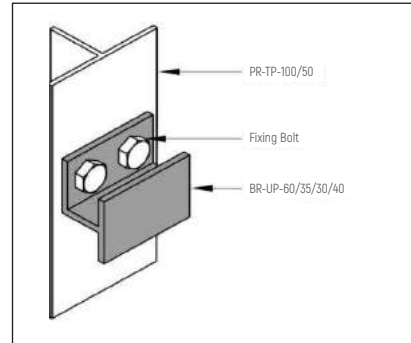
Undercut Fixing

Application

Cladding fixing system for stacked tile pattern.

Materials

Profiles & Brackets - Aluminum 6082-T6
Anchors & fasteners - SS316 & SS304



STONE FIXING SYSTEM-06

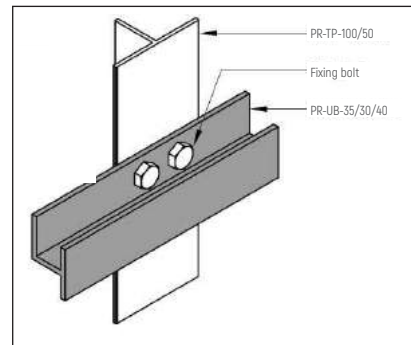
Undercut Fixing

Application

Cladding fixing system for stacked tile pattern.

Materials

Profiles & Brackets - Aluminum 6082-T6
Anchors & fasteners - SS316 & SS304



Waste Management System (Garbage & Linen Chutes)

Brand: SFSP



Chutes are very convenient, simple and low cost method of controlling and disposing of refuse and linen. SFSP Chutes meet the most stringent requirements of environmental health and safety. Chutes are used as original equipment in new buildings, such as: Hotels, Hospitals, High Rises and Residential Towers.

Finishes

- SS 304
- SS 316
- GI Galvanized Steel

SFSP provides the following material gauges

- 1.5mm (16 Gauge)
- 2.0mm (14 Gauge)
- 3.0mm (11 Gauge)

SFSP chutes are available with the following standard internal diameters

- 500mm (20")
- 550mm (22")
- 600mm (24")
- 700mm (28")
- 800mm (32")
- 900mm (36")

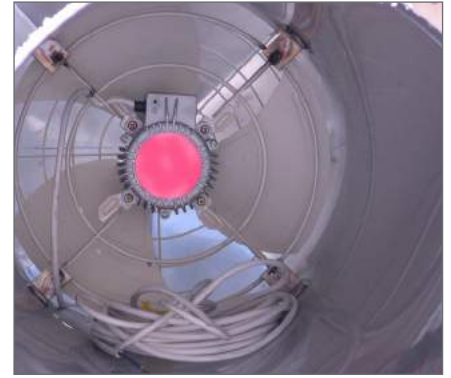
The System includes the following

- Chute Tube
- Intake Throat
- Hopper Door
- Clamp Ring & Supporting Frame
- Access Door
- Elbow
- Fire Cut Off Door
- Control Panel
- Disinfecting & Sanitizing Unit
- Solenoid Valve
- Tube with Insect Screen & Exhaust Fan
- Cleaning System & Brushing Device
- Cleaning & Fire Sprinklers
- Garbage Container Sorters
- Compactor



Vent Tube with Insect Screen & Exhaust Fan

Vents are installed at the top of the chutes, usually above roof level this ventilator maintains a smooth flow of fresh air within the refuse chute. The foul air exhaust fan helps prevent the escape of any bad odours or gases released by the garbage material.



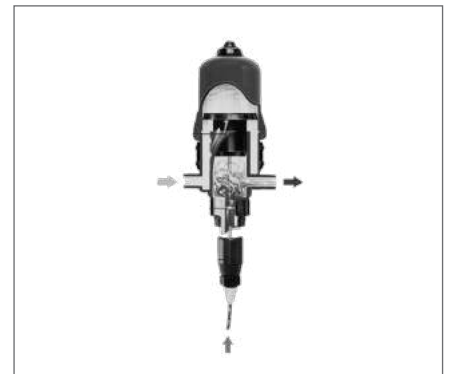
Solenoid Valve

Electrically operated valve controlling the flow of water to the sanitizing unit.



Disinfecting & Sanitizing Unit

It is part of the automatic cleaning system of the chute, the sanitizing unit mixes soap along with the water where by the interior surfaces are sprinkled with water from alternate floors by sprinklers of Capacity. It is recommended for use with every chute installation where proper operation and maintenance of the sanitizing unit reduces the immersion of strong odours and germs.



Access Door

Access door is located below the vent tube on the last floor. It is used for accessing the equipment in case of maintenance or revision of the chute. When opening the access door, the equipment located inside consists of the motor unit, solenoid valve, brush, disinfecting and sanitizing unit, designed to give manual or automatic brushing of the internal surface of chute.



Cleaning System & Brushing Device

Chute cleaning system specifically designed to clean the total vertical length of the internal surface of all chutes, where by it includes brush unit and motor unit.



CONTROL PANEL

Controls the entire automated systems within the chute; operates the cleaning system, controls the function of electromagnetic door locks with the presence of an emergency button which isolates electricity and stop all the running functions.



INTAKE THROAT

For each floor there is an intake throat for the hopper door...



HOPPER DOOR

Hopper doors are provided in the service room on each floor and are designed to eject loose or bagged refuse (discharge garbage) directly into a refuse chute or a container. Hopper doors have an effective self-sealing system.



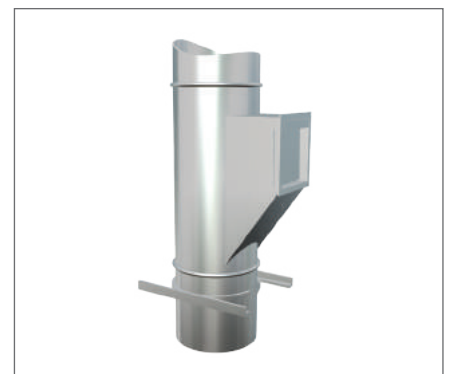
Clamp Ring & Supporting Frame

Cut, shaped and drilled from 35x35x3 mm or (other sizes are applicable for use) Mild steel angle with a rigid, welded construction. The frame holds a metal clamp band. The frame is rust proof for internal use and hot dip galvanized for external use.



Swaged Joint

Used to join certain section of duct.



Chute Tube & Sound damping

Chute Tube gives an unimpeded dumping of refuse within a chute, the best shape has proved to be circular.



Sprinklers

Automatic Fire Sprinkler Cleaning Sprinklers

Spray head located in all floors behind the door opening for cleaning issues.

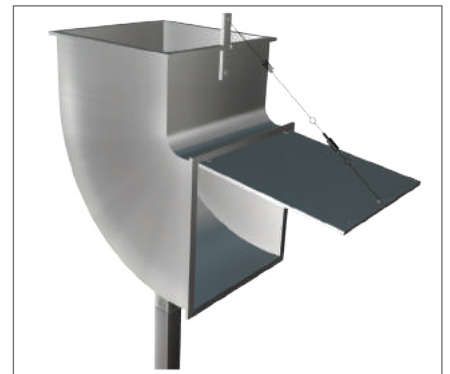
Fire Sprinkler: Glass bulb sprinklers installed for fire detection inside the chute in each floor. 1/2" IPS, 68°C (165°F). Glass Sprinklers can be used in conjunction with a normal water supply at a pressure of up to 8 bar.

Smoke Detection System: This system shall be provided by the fire alarm subcontractor.



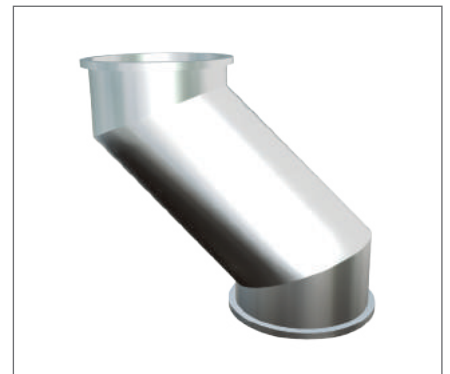
Fire Cut off Door

Fire Cut Off Door has a horizontal rolling door held by a spring on each side connected to a fusible link. In case of excessive heat (or fire) the link gets fused at 165° F (68°C) causing the door to roll shut. The discharge is 1.5 hours fire rated.



Elbow Offsets

Factory fabricated from the same material as the refuse chute, but in a heavier gauge to withstand the impact of falling bags. Offsets should not be less than 45° from the horizontal. Offsets are fabricated to all diameters of refuse and linen chutes provided by SFSP.



Garbage Container

TYPE MGB

CAPACITY: 1.1m²

MATERIAL: Hot-dip galvanized steel
(DIN 30700)

TYPE MGD 2.5

CAPACITY: 2.5 m³

MATERIAL: DIN 30738 hot-dip
galvanized steel

TYPE MGD 4.5

CAPACITY: 4.5 m³

MATERIAL: Galvanized steel

TYPE MGC

CAPACITY: 1.53m²

MATERIAL: Powder coated

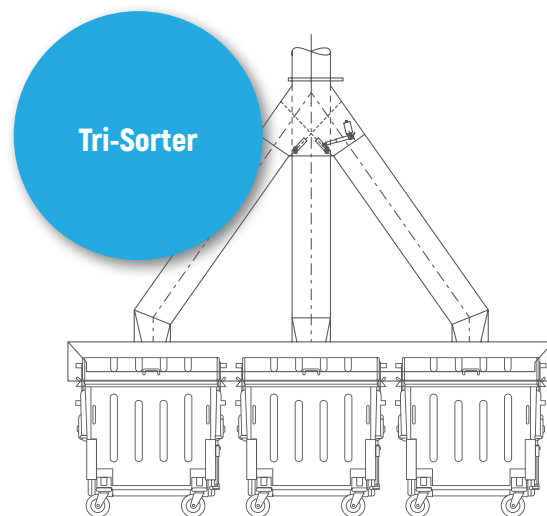
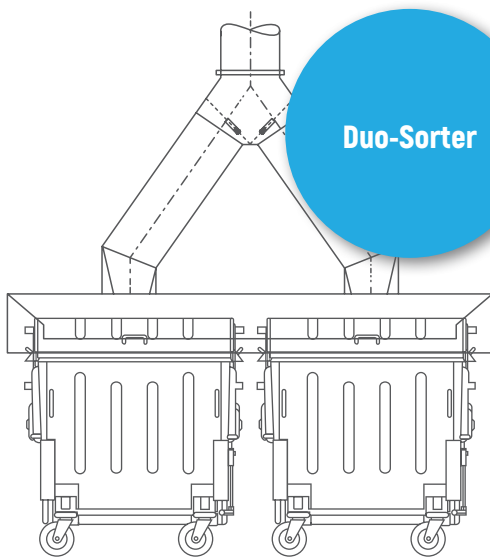


Compactors Type H 150

- 1.Operation: Automatic hydraulically operated.
- 2.Operating Pressure: 40, 000 lbs.
- 3.Compaction: Compacts refuse 15-20% of original volume.
- 4.Packaging: Packages refuse directly into heavy gauge plastic sacks or containers.
5. Capacity: 750kg/hr.
- 6.Compaction Chamber: 0.20 m³ with a machine cycle time of 40 seconds giving a theoretical compaction volume of 8 m³/hr.
- 7.Construction Compactor: Strengthened 10mm steel plate.
- 8.Compacting Ram: The compacting ram is made from 6mm plate with the face of the ram increased to 25mm plate to effectively handle the 18 ton pressure.
- 9.Compaction chamber: Shall have hardened steel shearing blades.
- 10.Hydraulic Power Pack: Pre-packed fully connected integrally mounted system to develop over 3000 PSI. Normal operating pressure 1000 PSI (Approximately).
11. Motor: 40 Second cycle. Time 4 kw-1450 RPM.
12. Pump: Pressure balanced, external oval gear type.
13. Electrical control: Housed in a keyed access cabinet.
14. Other Feature: Repeat hammer action and automatic attendant alarm.



Garbage chutes Sorters



Dry Wall & Ceiling Profiles

Brand: SFSP



Gypsum Boards are considered among the most economic and ideal way for wall partitioning. Easy to install, saves time and money, gypsum boards can be used as a backing for wall treatments such as wall paper, fabric, tile and wood paneling or it can simply be painted.

SFSP provides a complete product range for drywall and ceiling constructions. SFSP Studs, Runners, Furring Channels, Ceiling Channels, and wall Angles are among the range of products produced according to relevant standards to service the dry wall installers.

Materials

Made of :

Pre-galvanized steel complying with:

- BS 2989: Zinc grade Z2, zinc coating type G180, G120 and G275.
- ASTM C645 G90 (275 g/sqm) - G60 (180 g/sqm) - G40 (120 g/sqm)
- G20 (60 g/sqm)
- ASTM C754 G90 (275 g/sqm) - G60 (180 g/sqm) - G40 (120 g/sqm)
- G20 (60 g/sqm)
- DIN EN 10147

References:

ASTM C1047 : Standard specification for Gypsum Wallboard and Gypsum Veneer Base Accessories.

Partition Profiles

STUDS are vertical profiles inserted into the **RUNNERS**; bearing profiles of the partition; used for fixing of partition covering (Gypsum Boards).

RUNNERS are horizontal profiles to fix the partition to floor and ceiling.

Type of Profiles for Dry Wall

- Studs
- Runners
- Ceiling Channels
- Omega Channels
- Deflection Track
- Shaft Wall Track

Type of Profiles for Ceiling

- Main Ceiling Channel
- Furring channels
- Wall Channels

Studs & Runners

STUDS are vertical profiles inserted into the **RUNNERS**; bearing profiles of the partition; used for fixing of partition covering (Gypsum Boards).

RUNNERS are horizontal profiles to fix the partition to floor and ceiling.



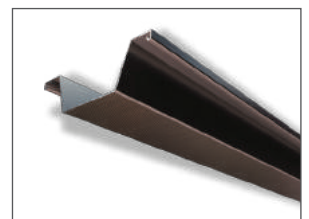
Main Ceiling Channel

The metal framing members of the ceiling grid are called main ceiling channel. Main ceiling channel is hung from above by suspension hanger. They run between the wall angles and form the support system for the suspended ceiling.



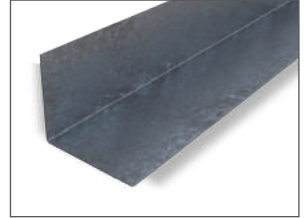
Furring channel

Furring channel: also known as cross furring. They run perpendicular to the main ceiling channel and are connected to it with a wire connection clip. Furring channels are used to support the ceiling panel (Gypsum Board)



Wall angle

This "L" shaped mouldings form the perimeter of ceiling. They ensure a finished edge where the ceiling meets the wall and establish the level of ceiling. Perimeter angles are set on all sides of the ceiling and should overlap on inside corners- Miter the wall angle on outside corners.



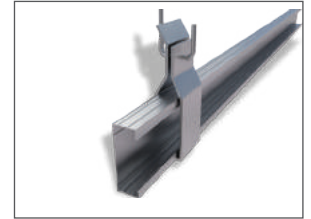
Channel Clamp

38 mm channel clamp to hold channel to ceiling by threaded rod



Channel Bracket

38mm channel bracket to hold channel to ceiling by threaded rod.



Double Spring Clip

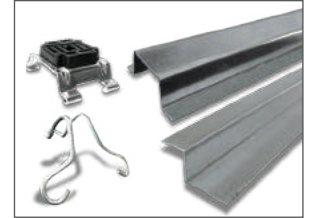
Double spring adjustable clip ceiling level.



Furring Clip

(Connecting clip)

2.5mm dia preformed wire clip to fit furring channel and main ceiling channel.



Metal Ceiling Grid Systems

Brand: SFSP



SFSP Ceiling Grid System is a practical, convenient ceiling system. It has a complete range of main c-channel sections and complementary parts so that you can adapt the modules to suit your design needs and load requirements. The design of SFSP Ceiling Grid System components ensures easy assembly, reliability, and the ability to be adjusted or replaced without damage. All components have been designed and tested by SFSP engineers to meet the requirements of ceiling grid support systems. SFSP main c-channel is cold formed on modern rolling machines from low carbon steel manufactured according to BS 6946:1988. With a continuous slot type, it provides the ability to make attachments at any point.

The Types of Ceiling Grid Systems include Standard Ceiling / Advanced / Extreme / Back To Back Ceiling Grid System

Systems

Material: S 235 JRG2
Finish : Hot Dip Galvanized, Powder Coated

C-Channel Type: Slotted or plain

Standard Ceiling Grid System

CG-100 CSS

C-Channel Type : 41x21x1.5mm
Threaded Rod : M10
Bracket Thickness : 3mm
Maximum Distance : 50 cm
Allowable Load : 40 kg/m²

CG-120 CSS

C-Channel Type : 41x21x1.5mm
Threaded Rod : M12
Bracket Thickness : 3mm
Maximum Distance : 50 cm
Allowable Load : 65 kg/m²

Advanced Ceiling Grid System

CG-1000 CAS

C-Channel Type : 41x21x2.0mm
Threaded Rod : M10
Bracket Thickness: 4 mm
Maximum Distance: 40 cm
Allowable Load : 90 kg/m²

CG-1200 CAS

C-Channel Type : 41x21x2.5mm
Threaded Rod : M12
Bracket Thickness: 4 mm
Maximum Distance: 40 cm
Allowable Load : 150 kg/m²

CG-1300 CAS

C-Channel Type : 41x41x2.0mm
Threaded Rod : M12
Bracket Thickness: 4 mm
Maximum Distance: 40 cm
Allowable Load : 245 kg/m²

Extreme Ceiling Grid System

CG-2000 CES

C-Channel Type : 41x21x2.5mm
Threaded Rod : M12
Bracket Thickness: 4 mm
Maximum Distance: 40 cm
Allowable Load : 300 kg/m²

CG-2200 CES

C-Channel Type : 41x41x2.5mm
Threaded Rod : M10
Bracket Thickness: 4 mm
Maximum Distance: 40 cm
Allowable Load : 350 kg/m²

Back To Back Ceiling Grid System

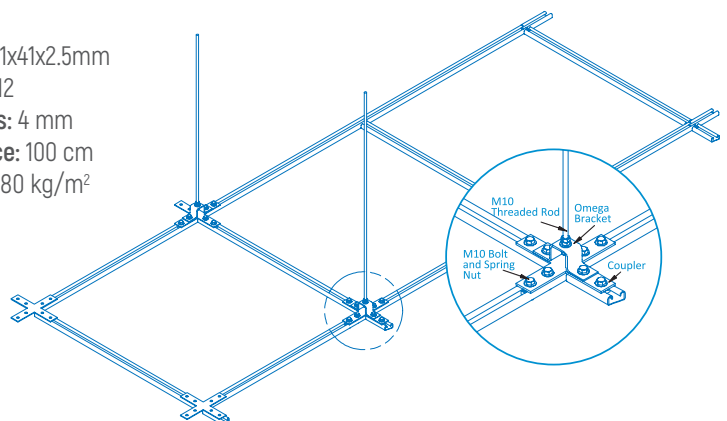
CG-3000 BES

C-Channel Type : 41x21x2.5mm
Threaded Rod : M12
Bracket Thickness: 4 mm
Maximum Distance: 100 cm
Allowable Load : 250 kg/m²

CG-3200 BES

C-Channel Type : 41x41x2.5mm
Threaded Rod : M12
Bracket Thickness: 4 mm
Maximum Distance: 100 cm
Allowable Load : 280 kg/m²

Accessories



Nexus Expansion Joint Solutions offer a comprehensive ranges of durable Expansion Joints for a wide array of applications including commercial centers, shopping malls, railway stations, airports, shopping centers, bridges, schools, hospitals, and several other areas of application. Our range of Expansion Joint Solutions are designed to safely absorb the heat-induced expansion and contraction of concrete slabs, to absorb vibration, and to allow movement due to ground settlement or earthquakes.

Expansion Joint



Wall To Corner



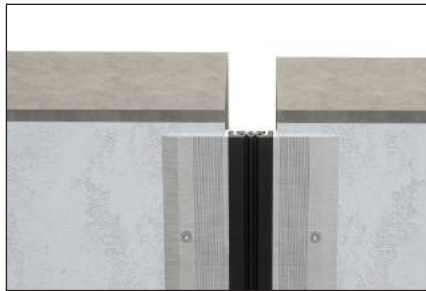
Floor To Wall



Wall To Wall



Wall To Corner



Wall To Wall;
 Ceiling To Ceiling



Floor To Floor;
 Wall To Wall



Floor To Floor;
 Floor To Wall



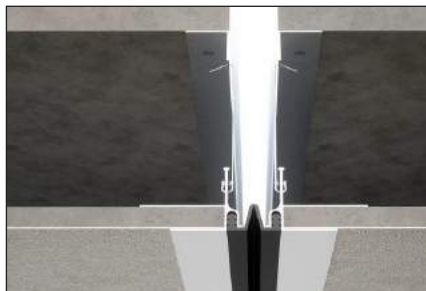
Floor To Wall;
 Wall To Corner



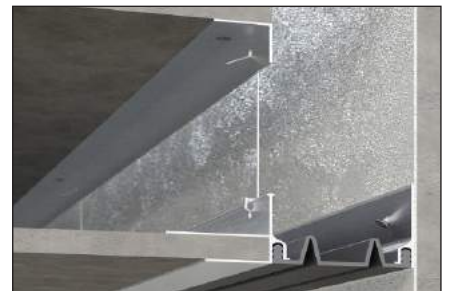
Floor To Floor; Wall To Wall;
 Ceiling To Ceiling



Floor To Wall;
 Wall To Corner; Ceiling To Wall

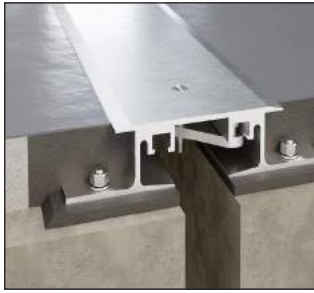


Ceiling To Ceiling;
 Gypsum Walls



Ceiling To Wall; Gypsum Wall To Corner

Seismic Expansion Joint



Floor To Floor



Floor To Wall



Wall To Wall



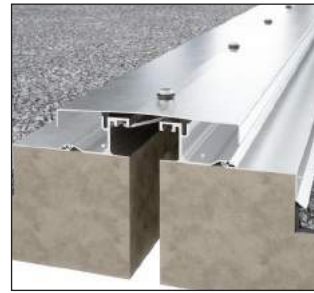
Wall To Corner



Ceiling To Ceiling; Wall To Wall



Ceiling To Wall; Wall To Corner



Roof
(Floor - Floor)



Roof
(Floor - Wall)

Water Proof Expansion Joint



Floor To Floor



Floor To Wall

Nexus Fire Barrier

Nexus Fire Barriers for vertical and horizontal expansion joint gaps with minimum movement capacity of 50% of the joint width. Manufactured in accordance with UL-2079 testing requirements.

Use:

Fire Barrier for vertical and horizontal expansion joint gaps with minimum movement capacity 50% of the joint width.

Material:

Protective lamination made of 0.05mm stainless steel AISI 304 with melting point 1400oC.

Core:

Fire blanket 128 kg/m3 density.

Product length:

Standard production length is 3 meters
Other lengths are available upon request.

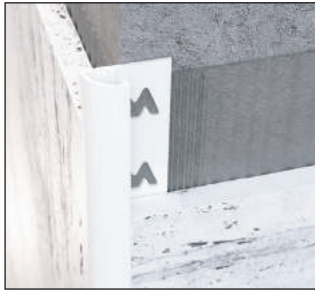
Applications

Designed for Floor & Wall Gaps
For 2 hours Fire rated requirement
Suitable for gap sizes from 50 - 350 mm.



Nexus offer comprehensive solutions for the construction industry ranging from Expansion Joint Covers and Fire Barriers to Entrance Matting Systems, Wall and Floor Profiles, Tactile Solutions, etc... NEXUS range of products is manufactured according to most common international standards to meet the requirements of commercial, residential, governmental, transportation, healthcare and educational projects.

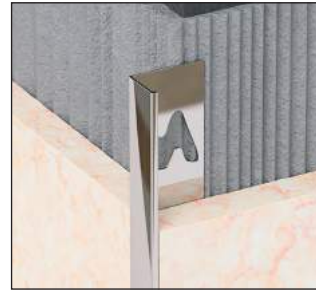
Profiles For Floors And Walls



Profiles For Walls



Profiles For Floors



Profiles For Floors/Walls

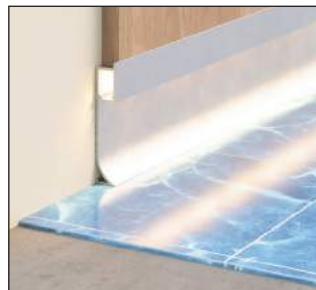


Profiles For Walls/Glass

Stair Nosing



Skirting



Movement Joint



PVC Movement Joint



Tile Movement Joints

Channels / Strips



Profiles for Walls



Profiles for Glass

Landscaping



Tactile



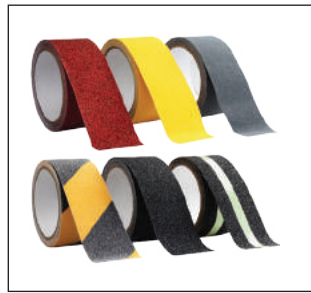
Tactile Paving

Indicator Studs & Strips

Rubber Gaskets



Anti Slip Tape



Carborundum Type

PVC type

Entrance Matting Systems by Nexus

Brand: NEXUS | Manufactured in: SFSP



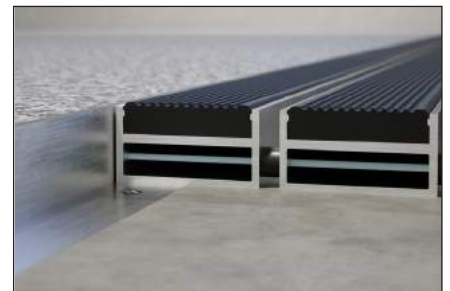
Nexus offer comprehensive solutions for the construction industry ranging from Expansion Joint Covers and Fire Barriers to Entrance Matting Systems, Wall and Floor Profiles, Tactile Solutions, etc... NEXUS range of products is manufactured according to most common international standards to meet the requirements of commercial, residential, governmental, transportation, healthcare and educational projects.



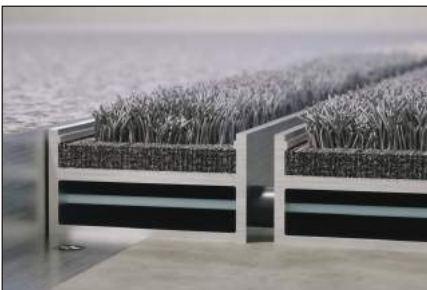
Aluminum-Rubber Profile



Aluminum-Carpet Profile



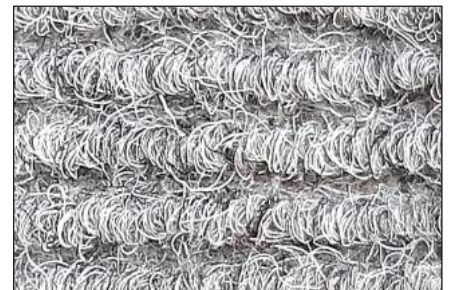
Aluminum-Rubber High Profile



Aluminum-Carpet High Profile



Aluminum Profile

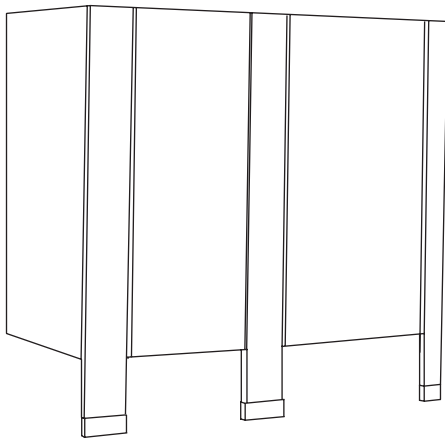


CP-DM-Carpet

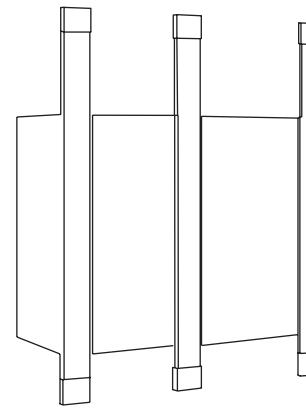
CUBIX phenolic compartment and partition systems are manufactured and customized to meet the precise needs of simple to complicated projects with its top-notch finish, quality of material and within a timely delivery. A complete solution with a wide selection of colors and textures are available. Our panels are manufactured from Black Phenolic covered with HPL panels to withstand harsh utilization conditions, while accessories are installed in stainless-steel finish; Gravity hinges, indicators Rosette, Lock set, Knob, Coat Hook, Pedestal leg, tissue holder, Stainless Steel brackets and channels, Stainless steel Strips. CUBIX phenolic compartment and partition systems provide strength, durability and design flexibility. These compartments offer 40 standard color selections and a choice of finishes. Our systems are suitable for high traffic public buildings, malls, entertainment centers, gyms and sports, educational and healthcare, sports facilities, etc..



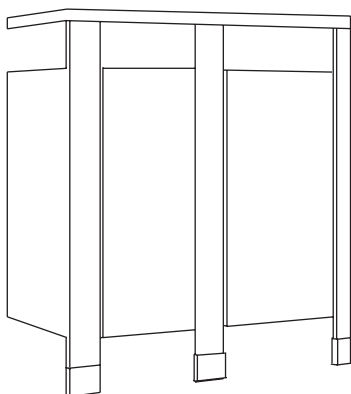
Construction Styles



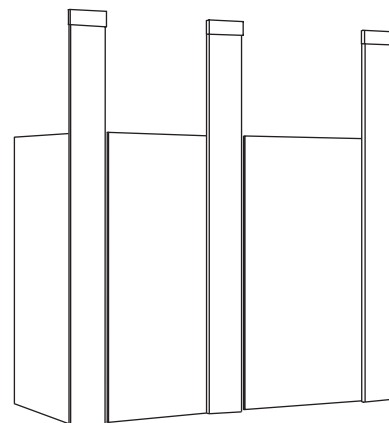
Floor mounted



Floor to ceiling



Overhead braced



Ceiling hung

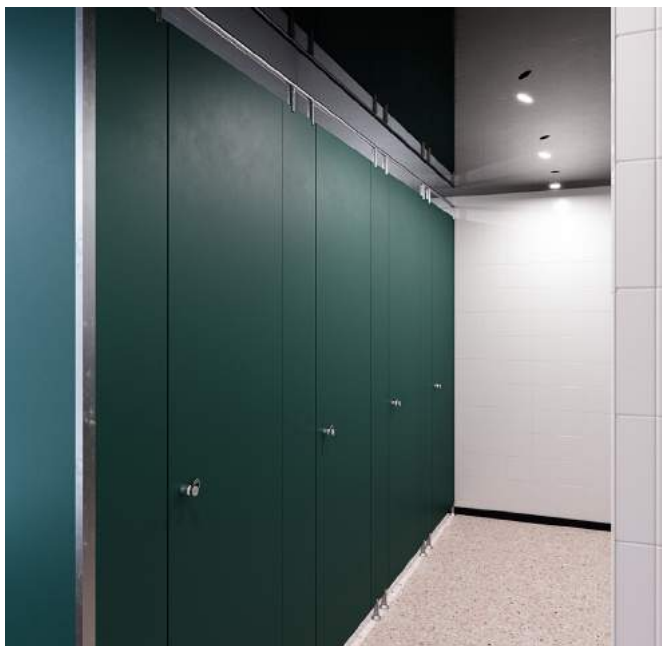
Dimensions

- Height: 2000mm Including 150mm floor clearance
- Door Size : According to site requirement, typically 600mm
- Toilet Compartment Width: According to site requirement, typically 900 mm
- Toilet Compartment Depth: According to site requirement, typically 1500 mm
- Compact Grade Laminate: 12, 13 mm

Phenolic Panels – Chemical Resistance

Solid phenolic core with melamine facing panels formed under high pressure rendering a single component section not less than 25.4 mm one inch thick. Colors must extend throughout the panel thickness. Provide exposed finish surfaces: smooth, waterproof, non-absorbent, and resistant to staining and marking with pens, pencils, or other writing devices. Solid phenolic core with melamine facing panels shall not show any sign of deterioration when immersed in the following chemicals and maintained at a temperature of 27 degrees C for a minimum of 30 days:

Acetic Acid (80 percent)	Hydrochloric Acid (40 percent)
Acetone	Hydrogen Peroxide (30 percent)
Ammonia (liquid)	Isopropyl Alcohol
Ammonia Phosphate	Lactic Acid (25 percent)
Bleach (12 percent)	Lime Sulfur
Borax	Nicotine
Brine	Potassium Bromide
Caustic Soda	Soaps
Chlorine Water	Sodium Bicarbonate
Citric Acid	Trisodium Phosphate
Copper Chloride	Urea; Urine
Core Oils	Vinegar



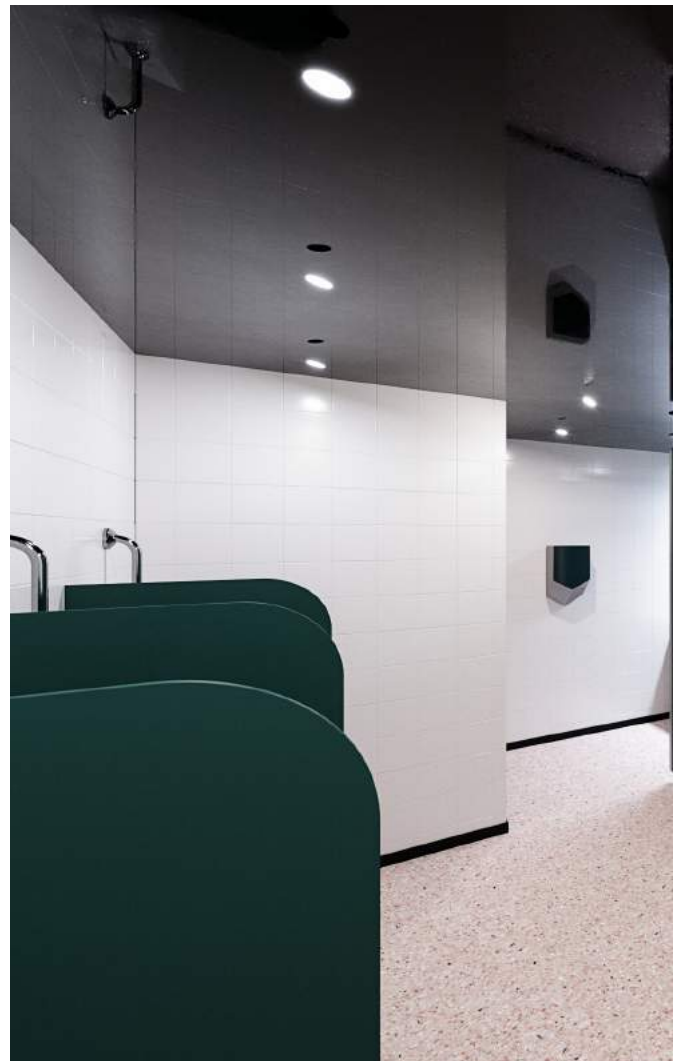
Phenolic Cubical The Best Solution

Compact laminates are Available in Various thickness 10,12,13,18,19 to 25 mm. They are Engineered to meet special requirement such as:

- Exceptional self supporting properties
- Greater dimensional Stability and flatness
- Resistance to abrasion
- Resistance to Fire
- Excellent hygiene properties
- Resistance To harmful chemicals and organic solvent
- Simple and quick assembly without the need for edging and adhesive
- In case of combustion, emits low amount of harmful gasses and fumes

PHENOLIC ADVANTAGES:

- Chemical Resistant
- Wear Resistant
- Scratch Resistant
- Impact Resistant
- Crack Resistant
- Boiling water Resistant
- Water Vapor Resistant
- Cigarette Burn Resistant
- Staining Resistant
- Easy to maintain
- Durable
- Cost effective in comparison to expensive substitutes like Stainless steel



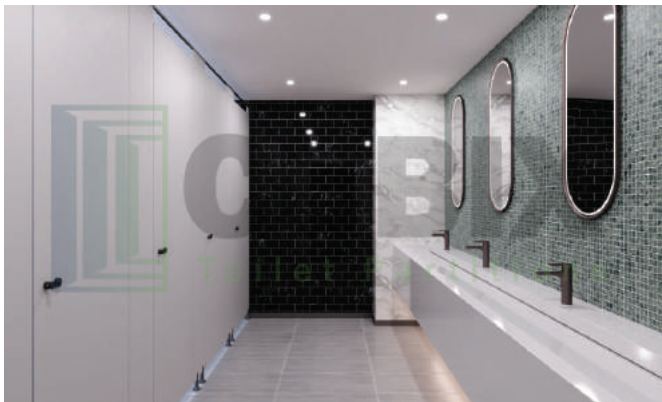
Toilet Partition



CUBIX-001 / SS 316 Hardware



CUBIX-002/ SS 316 Hardware



CUBIX-003



CUBIX-004



CUBIX-005



CUBIX-006 / ALUMINUM HARDWARE

HP Locker



HP Locker 01



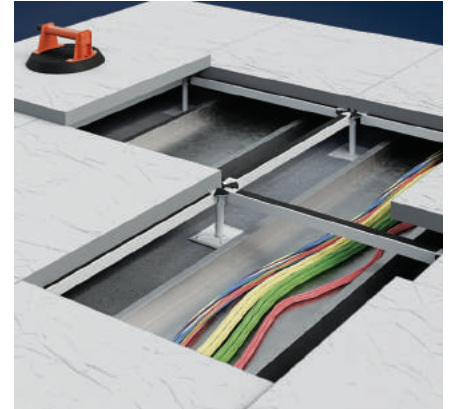
HP Locker 02

Raised Access Floor System

Brand: Pixel Access Flooring



PIXEL Raised Access Flooring offers comprehensive solutions of High Tech Raised Access Flooring Systems for the construction industry. PIXEL Raised Access Flooring are manufactured according to most common international standards to meet the requirements of commercial, residential, governmental, transportation, healthcare, and educational projects. In addition to its wide array of Raised Flooring panels and variety of finishes, PIXEL provides the technical expertise via its qualified and dedicated team of engineers and industry-experts in the field. PIXEL range of products is manufactured from high quality raw material and designed to meet all International Standards.



Scope of Application

Raised access flooring system is an elevated floor that is laid above a sub-floor, in order to leave an open space or void.

Raised floor system was commonly used in data centers and computer rooms.

Nowadays, and due to the increased application of advanced technology which requires proper cable management, Raised Flooring through their flexibility has become a key component in today's intelligent buildings and an effective solution in General Offices, Schools, Universities, Power Stations, Labs, and others.

Benefits of Raised Flooring

The most common usage for access floors is to run cables, electrical wiring and HVAC ducts. Running cables and electrical wiring through the accessible space between the panels and the sub-floor allows easy access and flexibility; wiring can be rerouted, repaired and upgraded without construction and minimal interference to the business' everyday activity. When combined with modular electrical systems and modular walls, the entire building can be reconfigured in a fraction of the time it would traditionally take.

Heating and cooling a building with a raised flooring system is also more efficient. The empty space between the panels and the sub-floor acts as a plenum chamber to dispense conditioned air evenly throughout the building.

Additionally, since warm air rises, heating the building from the access floor gap during the winter is more effective and efficient.

Raised floors are particularly useful for data centers and telecommunication facilities. Computer systems can rest on perforated tiles so that conditioned air is accessible for each unit. The equipment can then be designed to draw the cool air from below. With the increased efficiency and accessibility, access floors are an ideal alternative to suspended ceilings.

Composition

Raised Access Flooring System is a combination of panel bearing laid down on stringers and pedestals.

PANELS:

PIXEL Raised Flooring offers a variety of panels including calcium sulphate panels, cementitious steel composite Panels, and Chipboard panels as well.

Pixel panels are fabricated with bare finish, or covered with anti-static finishes such as high pressure laminate floor cover, vinyl floor covering, ceramic finish, and carpet, etc.

PEDESTALS:

PIXEL Galvanized Steel Pedestals: A vertical, adjustable part that supports the floor panels, with heights ranging from 100mm up to 2000mm. (The height of the under structure system is dictated by the volume of cables and other services to be stored beneath the raised floor). The panel is attached to the pedestal head at each corner. These pedestals are usually bonded to the sub-floor with mechanical fixings.

STRINGERS:

Stringers are horizontal pieces that connects to the pedestal heads, adding additional lateral floor support, while needed.

PIXEL Chipboard Panel

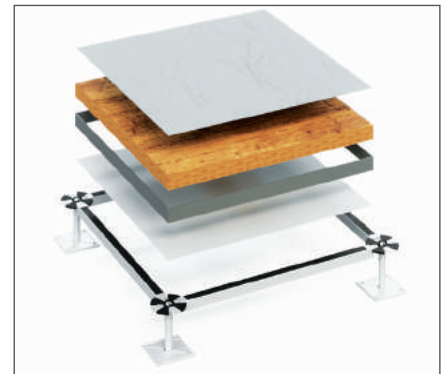
PIX-WOOD

PIX-CAL raised access flooring is made of high density chipboard core material. The top surface can be covered with multiple floor covering such as HPL, Vinyl, Carpet, Ceramic, etc. The bottom surface of the panel is covered with aluminum foil and galvanized steel sheet.

Size: 600 x 600 mm

Thickness: 35 and 38 mm

Weight: 12-14 Kg



PIXEL Steel - Cementitious Panel

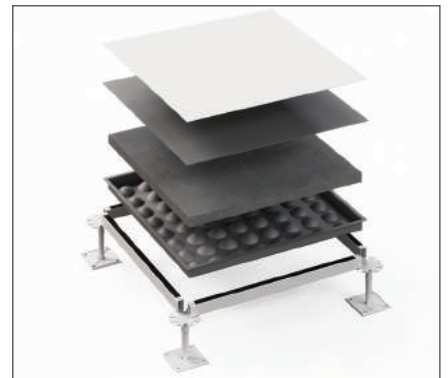
PIX-STEEL

PIX-STEEL raised access flooring consists of epoxy coated hard steel top plate formed through stamping and spot welding to deep stretched steel tray, filled with foaming cement in the middle. The combination of steel and concrete provides economic series of product grades, capable of matching the most demanding requirements. Panels are made either with bare finish (Epoxy coated), or with anti-static finishes with high pressure laminate or with vinyl, ceramic finish, and carpet, etc.

Size: 600 x 600 mm

Thickness: 35 mm

Weight: 13-15 Kg



PIXEL Calcium Sulphate Panel

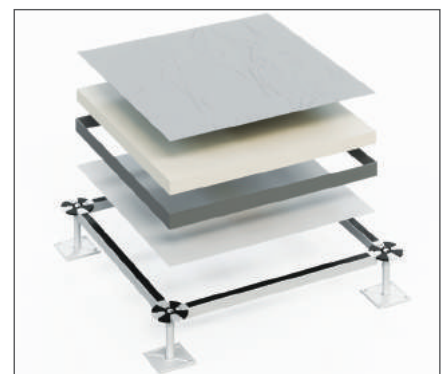
PIX-CAL

PIX-CAL raised access flooring panels are manufactured from high strength non-combustible Calcium Sulphate using environmental friendly materials: ~ 90% gypsum (calcium sulphate semi-hydrate), ~ 9% cellulose fibers. Calcium Sulphate panels can be covered with a variety of finishes including HPL, Vinyl, Carpet, Ceramic, and others. The Bottom surface is covered with Aluminum foil and galvanized steel sheet.

Size: 600 x 600 mm

Thickness: 30, 32, 38 mm

Weight: 20-26 Kg



Pixel Under-Structure System

Pedestals

Type 1: PIXPD-F
Height: 75-500 mm

Pedestal Head:
 Electro galvanized circular steel of 98mm diameter x 2.3mm thickness welded at the center to M18 threaded steel with 2 leveling and locking nuts.

Type 2: PIXPD-S
Height: 510-1200

Pedestal Head:
 Electro galvanized circular steel Dimensions: 98mm diameter x 2.3mm thickness welded at the center to M18 threaded steel with 2 leveling and locking nuts.

Type 3: PIXPD-T
Height: 1210-2000 mm

Pedestal Head:
 Electro galvanized circular steel of 98mm diameter x 2.3mm thickness welded at the center to M18 threaded steel with 2 leveling and locking nuts.



Pixel Under-Structure System

Stringers

S-shape

Electro galvanized steel square shape.
 Size: 25x25x0.9mm with polyethylene acoustic insulation.

This profile is suitable for calcium sulphate and chipboard panels.

S-shape

Electro galvanized steel rectangular shape.
 Size: 32x21x0.9mm with polyethylene acoustic insulation.

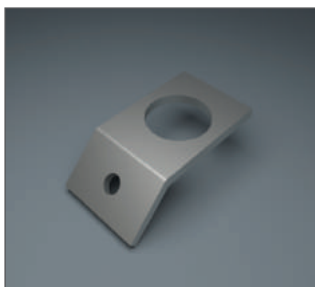
This profile is suitable for cementitious panels only.



Pixel Under-Structure System

Bracing

In order to enhance the stability and safety of raised flooring system with extremely high support heights, it is necessary to install additional bracing system on the original supporting structure to form a Seismic force-resistant structure. Pixel bracing consists of a perforated galvanized steel strip of 20mm width and 1mm thickness, bolted to a substructure from one side and connected to a turnbuckle stretching screw. A washer inserted to the pedestal is used as a connection.



Galvanized Steel Washer



Turnbuckle



Perforated Steel Strip



Through Bolt

Vinyl Covering

Thickness : 2mm
 Weight : 3980 g/m²



Anti-static HPL

High pressure laminate according to EN 438.



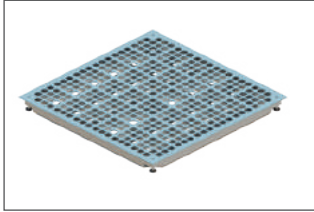
Perforated Panels

Perforated panels specially constructed to allow air flow distribution from under the raised access floor. PIXEL Raised Access Flooring offers a wide range of steel perforated panels with or without damper for regulating air flow.

- Panel size: 600x600mm.
- Load ratings are equal to non perforated panels.
- Perforation rate: From 10% up to 48%.
- Panel finishing: Epoxy coated.

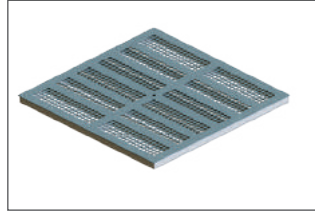
Perforated Type (PU)

This panel is applicable for all PIXEL Raised Access Flooring Panels.



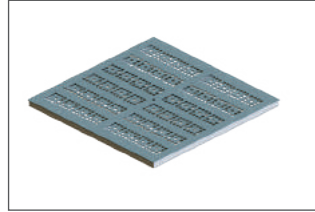
Perforated Type (CC)

These Panels are applicable for Chipboard and Calcium Sulphate panels.



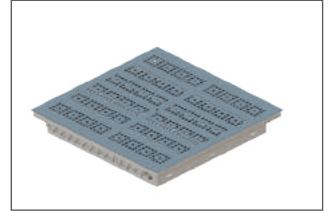
Perforated Type (CE)

These Panels are applicable for Cementious panels only.



Grills

This Panel is suitable for Calcium Sulphate and Chipboard Panels.



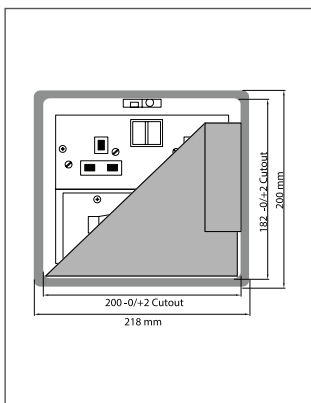
Service Power Boxes

PIXEL provides raised floor boxes for power outlets and data connections to desks and workstations within the modern office environment. Designed and manufactured according to BS EN 60670-1:2005, BS EN 60670-23:2008.

- Available as standard type or heavy duty type.
- Boxes are supplied with dividers for quick and easy configuration as 3 or 4 compartment boxes that enables connection to a range of power, voice, and data socket plates.
- The standard support plate is 3mm thick and allows high traffic volume. In the case of very heavy traffic volume, a robust steel sub-frame can be used to support the lid.
- The sub-frame doesn't restrict space for wiring and accessories. It also allows fine adjustments to be made to accommodate uneven flooring.
- PIXEL floor boxes are made from galvanized steel and is available as stainless steel finish upon request.

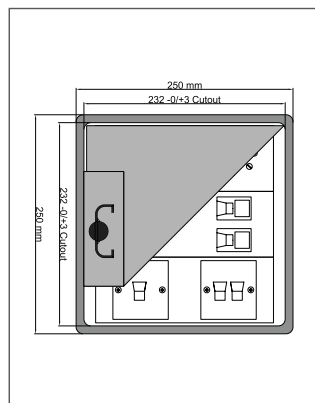
1) PBOX 200218-2

2 compartments, 75 x 175mm
Cutout size: 182 x 200mm



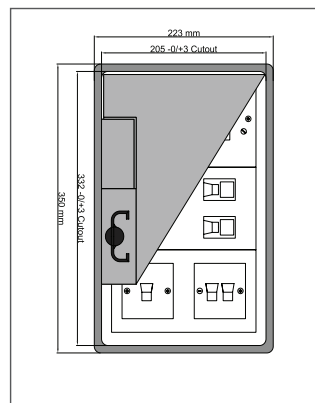
2) PBOX 250250-3

3 compartments, 75 x 205mm
Cutout size: 232 x 232mm



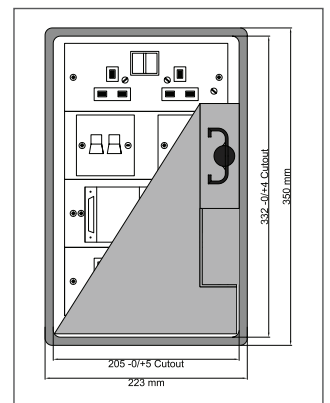
3) PBOX 350223-3

3 compartments, 100 x 180mm
Cutout size: 332 x 205mm



4) PBOX 350223-4

4 compartments, 75 x 180mm
Cutout size: 332 x 205mm



Impact Protection Systems

Brand: U-GUARD



U-Guard provides the most suitable way to protect your facilities from damage caused by traffic. Through a large selection of heavy duty items designed to suit most applications, U-Guard offers a set of material, each serves to provide the required shield to the facility.

Natural rubber, EPDM, SBR, Vinyl, and Urethane compounds are the materials used in manufacturing the distinguished products of Uguard.

Applications: Car Parks, Warehousing and Distribution Areas, Delivery & Dispatch Areas, Manufacturing Areas, Loading Docks, Parking Garages, Storage Areas, Archways & Columns, Hotel & Motel Parking Lots, Truck & Bus Terminals, etc..



Corner Guards

Accidents hurt - safety does not.



Description

Corner Guards are made from High impact resistant material. They are designed to protect the edges of columns in structures. Corner Guards relieve the tension of chipped & broken corners of pillars / columns. They are mounted into the edges of, preferably all the 4 edges of square columns of basement parking as well as the edges of the walls in industrial premises. They are suitable for medium, and heavy traffic areas & also moving trolleys. Considered to be a perfect solution for chipped edges in car parks, hospitals, nursing homes, laboratories, hotel, schools, sports areas and a multitude of other commercial properties.

Materials

They are manufactured using high impact resistant SBR Rubber. They are also available in NEOPRENE and EPDM on request. Standard color is black. Designs are available with yellow strip. They are weather resistant, abrasion resistant, crack resistant and do not stain the vehicle.

SBR - Styrene - Butadiene Rubber

Good Abrasion Resistance

Good Aging Stability

Shore of Hardness [50 _ 90]

Elongation [450 _ 500 %]

Possible Temperature [-40 up to 100 C]

EPDM - Ethylene Propylene Diene Monomer [M-Class] Rubber

Shore of Hardness [40 - 90]

Tensile Failure Stress [25 M pa]

Possible Temperature [-50 up to 150 C]



Wing Sizes

65x65 mm ; 75x75 mm ; 90x90 mm ; 100x100 mm ; 120x120 mm

Standard Lengths

1 mtr and 1.2 mtr. Other lengths are available upon request.

Installation

Clips normally come in GI (Pre Galvanized Steel), but can also be delivered in SS (Stainless Steel) and AL (Aluminum) upon request .

- 1- Clip to be fixed using 8 Screws M6 x 60 Nylon Wall plug
- 2- Rubber Corner Guard to be installed over the Metal Clip

Black with yellow strip

Type	Wing Size (mm)
CG - BY1	65
CG - BY2	75
CG - BY3	90
CG - BY4	100
CG - BY5	120

Wall Guards

Prepare and prevent, do not repair and repent.



Description

Wall Guards are designed to absorb, deflect and minimize the extent of wear, abrasion and impact from wheeled traffic such as trolleys, carts and vehicles. Wall guards are made of aluminum retainer and PVC or Rubber covers. Heavy duty rubber wall and circular profiles offer cost-effective protection for walls, circular columns in busy assembly and access areas. Wall guards are applicable by mechanical fixation or adhesive fixation to any substrate, including concrete, brickwork and block work, these robust and durable profiles can be used on both internal and external ramps by mitering on-site. It also be curved to accommodate surface variations.

Materials

Wall guards are applicable by mechanical fixation or adhesive fixation to any substrate. UV and ozone stabilizers for highly-resistant rubber/UV and ozone resistant rubber . They come black with a yellow strip.

Sizes

200 mm height x 25 mm width , 200 mm height x 50 mm width, 120 mm height x 30 mm width and other sizes upon request.

Standard Lengths

These products come in 2 mtr or 4 mtr Rolls.

Installation

They are installed to wall and column in vertical and horizontal position as per the requirement with the help of M8x80 mm size expansion bolts, at 50 cm distance from the other with washer and P.V.C. Fischer. Each 250mm.

SBR - Styrene - Butadiene Rubber

Good Abrasion Resistance

Good Aging Stability

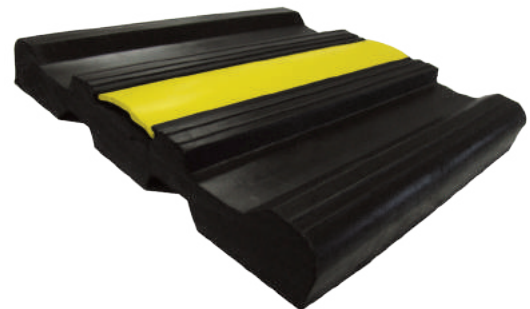
Shore of Hardness [50 _ 90]

Elongation [450 _ 500 %]

Possible Temperature [-40 up to 100 C]

Technical Table...Black

Type	Thickness (mm)	Width (mm)
WG - B1	30	120
WG - B2	25	200
WG - B3	50	200



Black with yellow strip

Type	Thickness (mm)	Width (mm)
WG- BY1	25	200
WG- BY2	50	200

WHEEL STOPS

Tomorrow is your reward for working safely today.



Description

Parking Blocks (Wheel Stop) are fabricated from premium quality Natural /EPDM rubber including: Shore of hardness: 40-90, Tensile failure stress: 25 M pa, and Possible temperature:-50 to 150 c. They have high resistance to severe impact & brutal weather conditions. Parking Blocks will help bring order to your residential and parking lots. These can be installed onto the ground of the allotted /painted Parking Slots to prevent the car from going beyond a certain limit thus protecting the wall / glass glazing structure & the car itself from damages. Solid coloring throughout means they never need painting and will retain an attractive appearance even under the harshest of conditions. These are installed with the help of epoxy & anchor bolts.

Materials

Wheel stoppers are made of high resistant extruded rubber with excellent weather resistance, crack resistance and abrasion resistance quality. It comes in black rubber with yellow strip.

EPDM - Ethylene Propylene Diene Monomer (M-Class) Rubber

Shore of Hardness [40 - 90]

Tensile Failure Stress [25 M pa]

Possible Temperature [-50 up to 150 C]

Sizes

Base width 130 mm by height of 100 mm

Base width 138 mm by height of 100 mm

Base width 150 mm by height of 150 mm

Standard Lengths

The standard length is 500 mm up to 2000 mm but the most running is 500 mm and 1800 mm

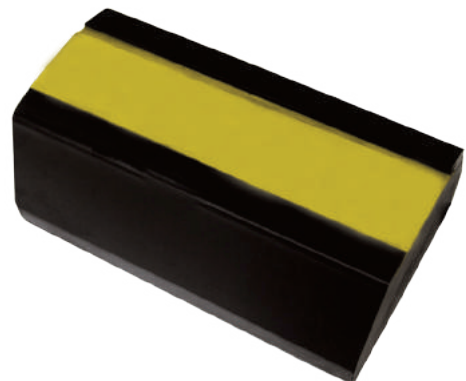
Installation

Wheel stopper can be fixed using rawl bolts by putting counter sunk in the stoppers. Our recommendation for fixing is through bolt M10 x 160 mm.

Technical Table...

Black with yellow strip

Type	Base Width (mm)	Height (mm)	Length (mm)
WS- BY1	130	100	500-2000
WS- BY2	138	100	500-2000
WS- BY3	150	150	500-2000



SPEED HUMPS

Protecting your site in your absence



Description

A speed hump is a gradual rise and fall of the pavement surface along the roadway extending across the pavement width. Speed humps cause a gentle vehicle rocking motion that causes driver discomfort, thus resulting in most vehicles slowing down to 20 kmh at each hump. Speed humps have the advantage of being self-enforcing. They are sometimes referred to as "sleeping police officers".

Materials

The speed humps are made of high impact resistance moulded rubber. They have excellent weather resistance and abrasion resistance quality.

EPDM - Ethylene Propylene Diene Monomer (M-Class) Rubber

Shore of Hardness [40 - 90]

Tensile Failure Stress [25 M pa]

Possible Temperature [-50 up to 150 C]

Sizes

400 mm width x 500 mm length x 50 mm height

400 mm width x 250 mm length x 68 mm height

460 mm width x 500 mm length x 75mm height

Standard Lengths

The standard length is 500 mm and 250 mm

Installation

Speed humps can be fixed using rawl bolts in alternate black and yellow humps with end caps. Our recommendation for fixing is through bolt M12x100 mm

Technical Table...

Black with yellow strip

Black with yellow strip

Type	Base Width (mm)	Height (mm)	Length (mm)
SH - 1	400	500	50
SH - 2	400	250	68
SH - 3	460	500	75



TRAFFIC MIRRORS

Safety does not happen by accident.



Description

Convex mirrors are commonly used for security and safety reasons to overcome sight restriction problems in visibility deficient areas. It sells high visibility for roads and highways when the speed of cars is low. It is ideal for viewing blind spots, driveways, garages, warehouses, shop, factories, schools, parking areas etc.. They are also increasingly being used in the public road environment by private individuals at sight restricted private property accesses. They are also adjusted to any angle to allow an optimal line of sight. Last but not least, they do not have normal or tough environmental conditions since they can be used widely.

Materials

U Guard convex acrylic mirrors with anti aging fiber glass mirror frame. It is made up of a composite aluminum (polyethylene). The thickness of the acrylic mirror is 2 mm. And the back side is 0.5 cm and it is 100 % UV stabilized component. It can be installed both on the wall and pole. Besides, it comes with large radius of curvature for minimum distance distortion.

Installation

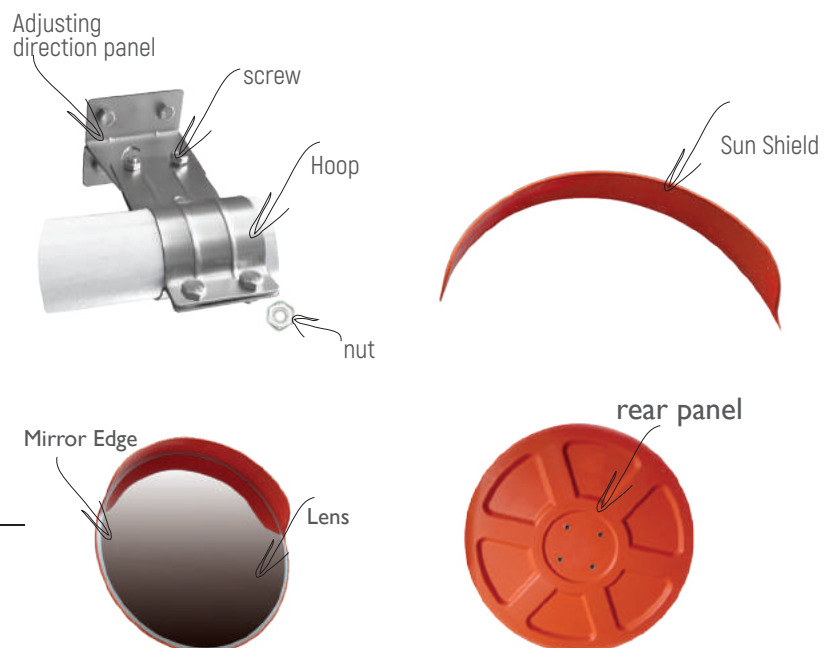
The convex mirror should be installed at a location that provides the best view of the road and the oncoming vehicles concerned. Mirrors should be positioned such that the motorist in the vehicle entering (ie. the one required to give-way) can see the opposing vehicle in approximately the center of the mirror. Ideal traffic solution for carparks and entrances.

Standard Diameter

The standard diameter is 600 mm. It also comes in 300 mm, 450 mm, 650 mm, 750 mm, 800 mm and 900 mm.

The bolt screw is M10.

The required distance of the general view is 7, 10 and 18 mtr.



Handrails
Brand: Pawling



Pawling Systems range of Handrails offer a wide variety of styles, colors and materials for all types of facilities, applications and budgets. A near endless list of product options including PVC, Wood and Stainless Steel. Or a combination of these materials to provide you with the finish and design you want.

For the PVC Handrails, we offer 70 standard colors from which to choose or we provide custom color matching. The Wood Handrails are offered in Oak, Maple, Ash and Cherry. Standard stain colors or custom matched stain at no additional charge. There is a truly incredible wealth of design possibilities with Pawling Systems products.



Impact Protection Systems
Brand: Pawling

INTERNAL | Architectural & Industrial Impact Protection System:

- Handrails: Sculpted, Flat and Cylindrical Profiles
- Wall Guards: Flat and Sculpted - Accent Rails
- Chair Rub Rails: Flush and Surface-mounted
- Corner Guards: Flush and Surface-mounted
- Vinyl Doors and Frame Guards

Material: Vinyl, Aluminum, Wood, Clear Lexan and Stainless steel



EXTERNAL | Speed Bumps & Bumper Guards

Speed Bumps and Bumper Guards are used extensively in commercial parking garages and building service areas for vehicular, human and parking safety. These profiles are designed to maximize wall surface area protection and high impact absorption.

EXTERNAL | Heavy Duty Wall and Corner Guards

Heavy duty wall and corner guards are provided to withstand heavy impacts in parking, logistics and industrial facilities. Profiles are reproduced from EPDM Rubber, Natural Rubber, Styrene-Butadiene Rubber, Recycled Plastic, and Neoprene.



Metal Ceilings

Brand: BMG



Metal ceilings are usually specified in modern buildings for many valuable reasons. It is considered as high performance ceiling due to the increased life span and durability. The high recyclable content also makes it one of the most valuable ceiling solutions in the new building code.

The metal ceiling can be produced in different shapes, colors and patterns from plain to perforated, square, rectangular, trapezoidal, wave and curve. BMG Metal Ceiling range varies from our standard products up to any custom made designs specified by the architects and designers.

Acoustic Performance

In order to improve interior sound control, perforation pattern with an open area of 16% to 22% is required. These patterns are framed with a solid border of 10mm in order to ensure maximum flatness and product stability.

As a standard feature, perforated tiles are supplied with a sound absorbing non-woven acoustic felt for enhanced acoustical properties, tested in accordance to ASTM C423a. Rockwool insulation pads of 25-50mm thick, 40-110kg/m³ density can be applied.

Finishes

The panels are finished with an electrostatically polyester powder coat (thickness of 60-120 microns) and are available in standard color RAL9010. Other colors (RAL, NCS, made to match) are available as per architect's specifications.

These panels are salt spray tested for 1000 hours corrosion protection, as per ASTM B 117-73, and Anti- Bacterial finish, as per JIS 2801:2000, is also available upon request.

Fire Classification

Surface spread of flame class 1 as per BS 476 : part 7 1997. Non-combustible material tested in accordance to BS 476 : Part 4: 1970. Class 0 material surface of composite products as per building regulations 1991.

Fire propagation tested as per BS 476 : Part 6 1989. Additionally fire rated F90 system was tested for 115 minutes fire resistance in accordance to BS 476 : Part 23:1987, Clause 5.



Acoustical & Decorative Ceilings

Brand: Rockfon



Rockfon is a leading provider of acoustic stone wool and metal ceiling solutions and suspension systems. Rockfon complete ceiling systems are a fast and simple way to create beautiful, comfortable spaces. Easy to install and durable, they protect people from noise and the spread of fire, while making a constructive contribution toward a sustainable future. Rockfon develops acoustic ceiling solutions directly addressing important indoor environment considerations and requirements by balancing high technical performance demands with modern design trends.

Rockfon stone wool panels are known for their design, aesthetics and ease of installation coupled with their key performance features of superior fire safety and humidity resistance, optimum light reflection and acoustic control. These qualities ensure that Rockfon products are among the highest-performing, most cost-effective and less labor intensive to install on the market. Rockfon specialty metal ceilings are designed and fabricated to exact specifications and the highest manufacturing standards in local production facilities. They are available in a wide-range of shapes, sizes and finishes, and exist in standard and custom configurations.

Performance Attributes of Rockfon Stone Wool Ceilings

- Sound Absorption
- Fire Safety
- Light Reflectance
- Humidity Resistance
- Clean-ability
- Hygienic
- Quick & Easy Installation

Installation Benefits

High quality results do not always require a lot of hard work. Rockfon ceiling tiles weigh less, are easy to cut with a standard utility knife, have a durable surface and edges and can even be installed before the building has been fully closed and finished. This speeds up the installation process and can contribute to the project remaining on time and on budget.

- Easy to Carry
- Easy to Cut
- No Acclimatization Necessary
- Integration of Services



Steel Doors

Brand: BMG



Doors are a legal requirement for all commercial properties, whether industrial environments, local authority buildings, leisure, hospitality, healthcare, education or retail offices.

We design every door to order, you can decide exactly which features you want it to include. From fire-rated protection and louvers to a soundproof filling, you will receive a specialist door purpose-built for your building.

Fabrication is at the core of everything we do. To make sure we're as good at it as possible, we've invested heavily into the latest manufacturing technology, so we can guarantee every door meets every customer's specifications, every time.

The benefits of error-free design mean that we can install your new door quickly, efficiently, and at your convenience, so you can sit back or concentrate on running your operations while we make your premises safe.

Steel Product Range:

- Fire rated steel Doors
- Non Fire rated steel Doors
- Insulated Doors
- Lead Lined Doors
- Acoustic Doors
- Personnel Doors
- Louvered Doors
- Glazed Doors
- Sliding Doors
- Glazed Screens
- Security Detonation Doors
- Prison Entrance Doors
- Grill / Cell Doors
- Blast Resistant Door
- Bullet Resistant Doors
- Vault Room Doors
- Burglar Resistant Doors
- Entry Gates



Gyproc systems have been purpose-designed by experienced technicians to meet the challenging needs of today's increasingly demanding buildings. Whether it is straight forward partitions or sophisticated shaft wall systems for high speed lift shafts - every aspect is taken into consideration, from performance to speed and ease of installation - and from safe handling to the ready availability of components across Middle East.

Partition & Wall Systems

Gyproc's lightweight partitions and wall system category extensively functions from a simple space division to high performance walls.

Wall Lining Systems

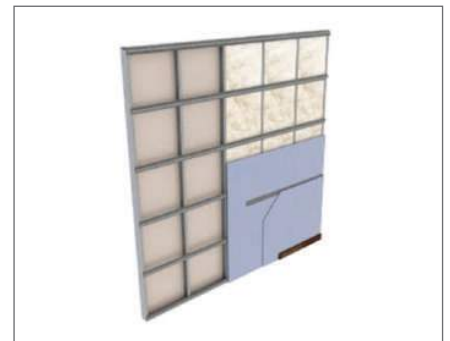
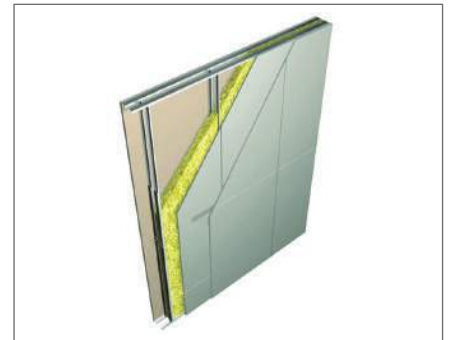
Gyproc's wall and roof lining system deals with all lining applications conforming to the thermal and sound insulation, fire protection, or impact resistance requirement.

Ceiling Systems

Gyproc's ceiling systems offers an extensive range of plasterboard ceilings suitable for all kinds of domain structures.

Finishing Systems

Gyproc's range of finishes provide everything needed to complete the wall lining, partition, floor and ceiling systems, regardless of the size and complexity of the project specification.



Mada Plus Systems

Brand: Mada



Drywall partitions are more than just a physical barrier. They are supposed to perform an array of functions ranging from fire, acoustics, impact, mold resistance and structural surety. Mada Plus Drywall systems are purposely designed to satisfy aforementioned range of projects requirements to ensure a safe and comfortable environment for the client. Each component of Mada Plus Drywall systems are thoroughly tested and system performance substantiated by internationally accredited 3rd party testing and certification agencies. The advantage of acquiring all components of a complete system from a single source (Closed system) guarantees the effectiveness of the system and ensures the performance as per the project specification.

System Selector

Mada e-selector is fast and easy tool that will assist you in selecting the most appropriate Mada Plus Drywall System for your applicatio

Gypsum Boards & Accessories

Brand: Gyproc / Mada / UMI / Gboard / UBoard

Plasterboard has become the most common dry lining material for walls and ceilings in modern building construction. Manufactured on a continuous production line, plasterboard is comprised of a specially formulated gypsum core, encased between paper liners. Plasterboard products utilise naturally occurring gypsum and paper. We supply extensive range of plasterboards, plasters, ceiling tiles and boards which are fully supported by high grade metal system components and accessories from SFSP.

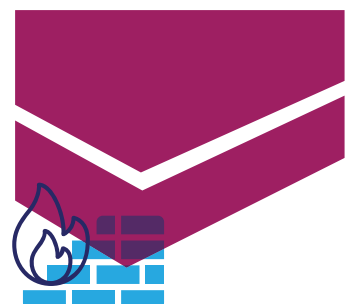
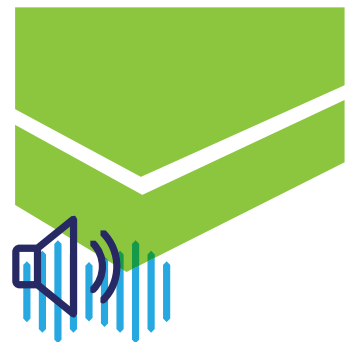
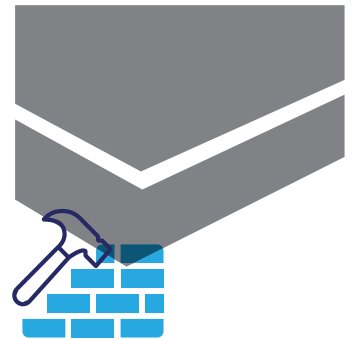
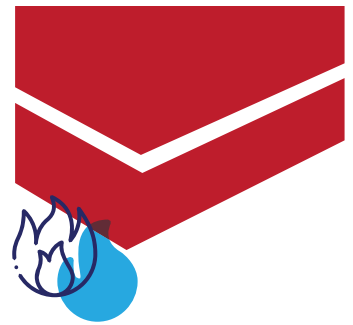
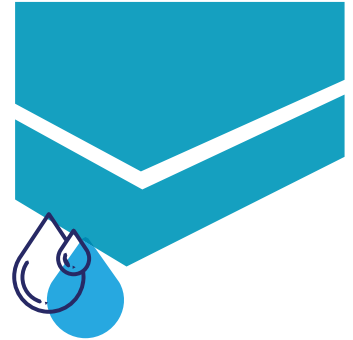
Range of Plasterboards:

- Regular Boards
- Cement Boards (External)
- Fire Resistant Plasterboard
- Moisture Resistant Plasterboard
- Fire and Moisture Resistant Plasterboard
- Impact Resistant Board
- Acoustic Boards
- Ceiling Boards
- FireStop Boards
- Shaft Wall Board

and more...

Range of Plasterboard Accessories:

- Joint Compound
- Plaster Board Adhesive
- Drywall Metal Tape for corner
- Drywall Glass Mat Tape
- Drywall Paper Tape
- Drywall Fiber Tape
- Drywall Screws



U-Boards products are manufactured according to international standards. Following is the U-Boards-Products Range:

Fiber Cement Boards

Fiber cement boards are manufactured from cellulose fiber, portland cement, quartz sand, additives and water; It is non asbestos, formaldehyde, benzene and other harmful substances and with excellent physical and chemical characteristics.

These boards are non combustible, fire and water resistant, green and environmental friendly, highly efficient and energy-saving.

Magnesium Oxide Boards

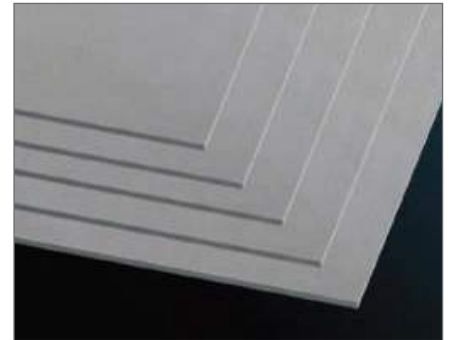
These boards are used in place of traditional gypsum drywall as wall and ceiling covering material and sheathing. It is also used in a number of other construction applications such as: Fascias, Soffit, Shaft-Liner & Area Separation, Wall Sheathing and as tile backing (backer board) or as substrates for coatings and insulated systems such as Finish Systems.

It is suitable for a wide range of general building uses and for applications that require fire resistance, mold and mildew control, as well as sound control applications and many other benefits. Magnesium oxide board are available in various sizes and thickness. It is not a paper faced material.

Calcium Silicate Boards

Calcium silicate board reinforced with selected cellulose fibers and fillers. It is 100% free from asbestos, sepiolite, inorganic fibers or formaldehyde. The board is versatile and suitable for use in a wide range of internal and semi exposed external applications in building construction projects.

Calcium silicate passive fire protection board being clad around steel structure in order to achieve a fire-resistance rating. It is an economical building board material with fireproofing property to replace concrete or block wall for the construction of non load bearing elements.



Buildings are subjected to different climatic conditions like hot in summer and cold in winter as well rain which have adverse effect on the building structure and their strength as well causes uncomfot to the occupant by heat gain in hot climatic conditions and Heat loss in Cold climate. External walls and Roof of the Building contribute to the heat gain and loss to external ambient and it easily disturbs the psychometrics inside of the Building.

In building insulation we have different dimensions to be covered majorly referred as Thermal Insulation, Acoustic Insulation and Fire Insulation. To serve the purpose market is flooded with various types of Insulation materials and the material is chosen to perform one or several functions at once. Rockwool Insulation is most suitable to perform multiple functions like Thermal Efficiency, Acoustic Comfort and Fire Safety.

Why use Rock Wool?

Rock Wool is a high performing material in the thermal insulation, acoustic insulation and fire resistance applications. Thermal insulation and energy saving (power/energy conservation) is one of our modern civilization concerns, for its positive role in conserving the environment and the national economy. Scientific research and studies proved that use of thermal insulation in buildings will dramatically reduce the heat transferred through the walls and roofs.

The open cell structure of Rock Wool makes it an ideal product as a sound absorber or acoustic insulator, with high absorbing/insulating coefficients over a wide sound frequency range, the acoustical insulation can be achieved by installing Saudi Rock Wool in wall partitions, thus providing significant improvement in their Sound Transmission Class (STC).

Due to its open cell structure, Saudi Rock Wool has superior sound absorption properties. (NRC>0.95), Using Rock Wool against sound waves decreases the sound reverberation time rooms/spaces, thus providing comfort and sound intelligibility to the occupants.

The most important characteristic of Rock Wool is its exceptional resistance against fire; Rock Wool is non-combustible and does not ignite. It is therefore internationally specified as a fire rated material.

Rock Wool restricts the fire to spread from a zone to another; it also acts asa protection for load bearing elements in steel structures and thus prevents the building from collapsing under fire conditions.



Insulation Systems

Brand: KIMMCO / SIIMCO -ISOVER

KIMMCO ISOVER
SAINT-GOBAIN

KIMMCO-ISOVER products offer solutions to enable the construction sector to meet the increasing demand for ecofriendly and energy efficient building materials. Stone Wool (Rock Wool) insulation products play a key role in the successful development of green and fire safe building solutions, as well as efficiently insulated industrial equipment.

KIMMCO-ISOVER products are made of high quality Stone Wool insulation materials in different shapes (slab, Wired Mat, roll, pipe section & loose wool) for all types of buildings (residential & non-residential) and industrial facilities.

The factory is located in Yanbu, in the western region of Saudi Arabia. In addition to Stone Wool insulation, KIMMCO-ISOVER manufactures and supplies Glass Wool insulation from its factory located in Kuwait.

What is Stone Wool?

KIMMCO-ISOVER Stone Wool products is made from volcanic rock – a natural material present in large quantities throughout the Earth. It combines mechanical resistance with good thermal performance, fire safety and high temperature suitability.

Why Insulation in Buildings?

KIMMCO-ISOVER products are application based solutions to satisfy a wide range of demanding requirements, covering various building and industry applications, to providing safety, efficiency, and thermal and acoustical comfort.

Savings & Thermal Comfort

With proper insulation, our buildings need smaller and less expensive heating and cooling devices to keep us comfortable.

Optimized Acoustic Comfort

Insulation also contributes to limiting sound pollution. In our modern world, noise has become one of the major sources of discomfort.

Excellent Fire Protection

It is crucial to have construction products that, in case of fire, don't contribute to the spread of fire and don't produce a harmful amount of smoke.

Sustainability

Buildings have a massive impact on the environment, both in their construction and throughout their life.



CONTACT INFORMATION

Contact Information

Sales Offices/Entities

KINGDOM OF SAUDI ARABIA

unitech.ksa@ikkgroup.com

Jeddah

Tel : +966 12 627 8222

Mak kah/Taif

Tel : +966 12 541 1206

Mad inah

Tel : +966 14 842 1095

Yanbu

Tel : +966 14 390 1499

Khamis Mushayt

Tel : +966 17 237 5929

Gizan

Tel : +966 17 321 6660

Riyadh

Tel : +966 11 292 8200

Qassim / Buraidah

Tel : +966 16 382 3946

Tabuk

Tel : +966 14 423 5203

Dammam

Tel : +966 13 859 0097

Hufuf

Tel : +966 13 530 1474

Jubail

Tel : +966 13 361 4390

UNITED ARAB EMIRATES

Dubai - Al Rashidiyah

unitech.dubai@ikkgroup.com

Tel : +971 4 2591 773

Abu Dhabi - Musaffah

unitech.auh@ikkgroup.com

Tel: +971 2 552 3393

BAHRAIN

Manama

unitech.bahrain@ikkgroup.com

Tel : +973 17 874 897

KUWAIT

Kuwait City

unitech.kuwait@ikkgroup.com

Tel : +965 2 4924 937

OMAN

Muscat

unitech.oman@ikkgroup.com

Tel : +968 24 591 006

QATAR

Doha

info@unitech-qatar.com m

Tel : +974 4451 3301

LEBANON

Beirut

unitech.lebanon@ikkgroup.com

Tel : +961 1 858 277

EGYPT

Cairo 6th of October City

unitech.egypt@ikkgroup.com

Tel : +20 2 3820 6477

PAKISTAN

Lahore

unitech.pakistan@ikkgroup.com

Tel : +92 42 3230157

SFSP Factories

SFSP - KSA

Specialized Factory for Steel Products

sfsp.jeddah@ikkgroup.com

3rd Industrial City / Jeddah

Tel: +966 12 637 4482

SFSP / UAE

SIGMA Factory for Steel Products

sfsp.uae@ikkgroup.com

DIC (Dubai Industrial City)

Tel : +971 4 818 1919

SFSP / EGYPT

Specialized Factory for Steel Products

sfsp.cairo@ikkgroup.com

6th of October City Giza

Tel : +20 2 3820 6477

SFSP / LEBANON

Specialized Factory for Steel Products / s.a.r.l

sfsp.lebanon@ikkgroup.com

Tanayel, Bekaa

Tel: +961 8 514 290

Engineering & Design

GERMANY

unitech.germany@ikkgroup.com

Unitech Deutschland GmbH

Stuttgart, Germany

Tel : +49 711 6868 7222

Marketing & Multimedia

Multi-D s.a.r.l

multi-d@ikkgroup.com

Multi-D

Beirut, Lebanon

Tel : +961 1 841 155

