

UNITECH
For Building and Construction Materials
PRODUCTS PROFILE

يونيتك



UNITECH | A member of the IKK Group of Companies | www.unitech-ikk.com

مجموعة شركات عصام خيرى قبالي وشركاه

UNITECH

For Building and Construction Materials

A MEMBER OF THE IKK GROUP OF COMPANIES

www.unitech-ikk.com

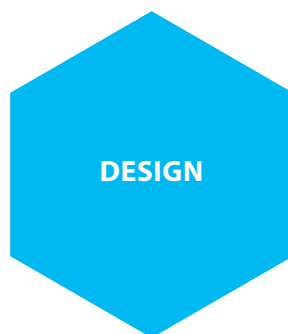
5	●	Vision - Mission - Values
6	●	Revenues
6	●	Outlets Types
7	●	Employees
8	●	Business Strategy
9	●	Our Divisions
9	●	Manufacturing Arm - SFSP
10	●	Commitment to Quality
10	●	Product Development
10	●	Value Chain
11	●	Engineering Specialty
11	●	Design and Product Safety
11	●	Sustainability and Responsibility
		Products Segmentation
12	●	A. Steel Construction Products
20	●	B. Architectural and Industrial Products
22	●	C. Specialized Building Solutions
32	●	Unitech Official Registration
34	●	The IKK Group of Companies
36	●	Contacts


INDEX

31	●	نبذة عن المجموعة
31	●	نبذة عن شركة يونيتك
33	●	مصنع التخصصات
33	●	يونيتمل
33	●	بيتا كونتك
33	●	يونييرو

UNITECH

BUILDING AND CONSTRUCTION MATERIALS
Solutions Provider





Unitech for Building and Construction Materials is a "Solutions Provider" company, specialized in the Design, Manufacturing and Trading of Building and Construction Materials in the region.

Unitech is a member of the IKK Group of Companies. It has been present in the market since 1978 and has grown to become one of the leading companies in the supply of building and construction materials.

The company is an ISO QMS 9001:2015 certified company and is a member of the US Green Building Council.

Unitech has an extensive presence covering various cities through the GCC and MENA countries: Jeddah, Riyadh, Dammam, Dubai, Abu Dhabi, Manama, Kuwait, Amman, Beirut, Cairo, and Karachi. The company is present in Europe via its design and engineering office in Stuttgart.

UNITECH **VALUES**

Unitech's core values are based on:



VISION

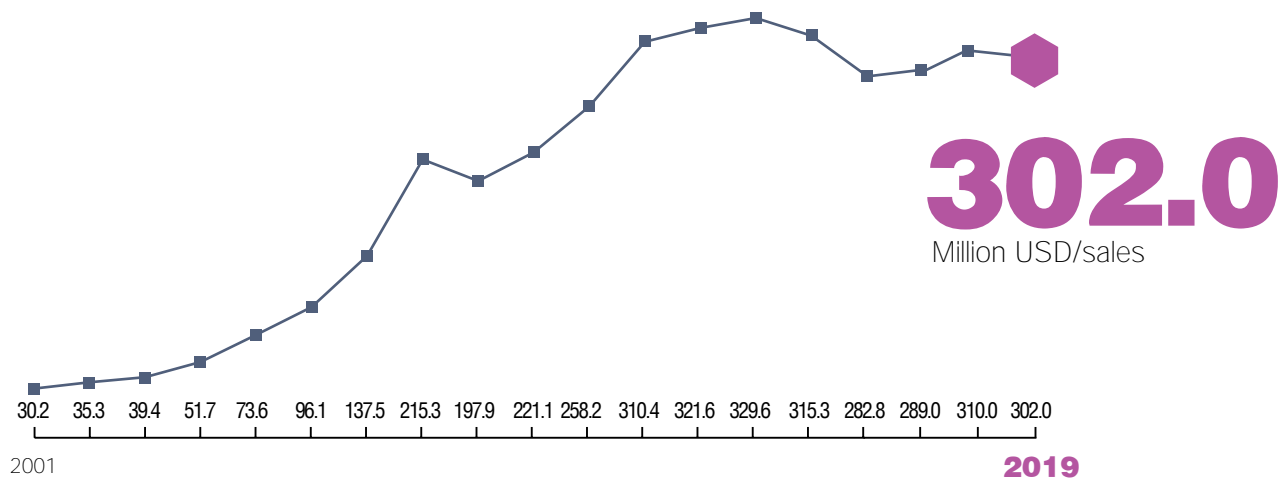
UNITECH to be the Customer's First Choice..

MISSION

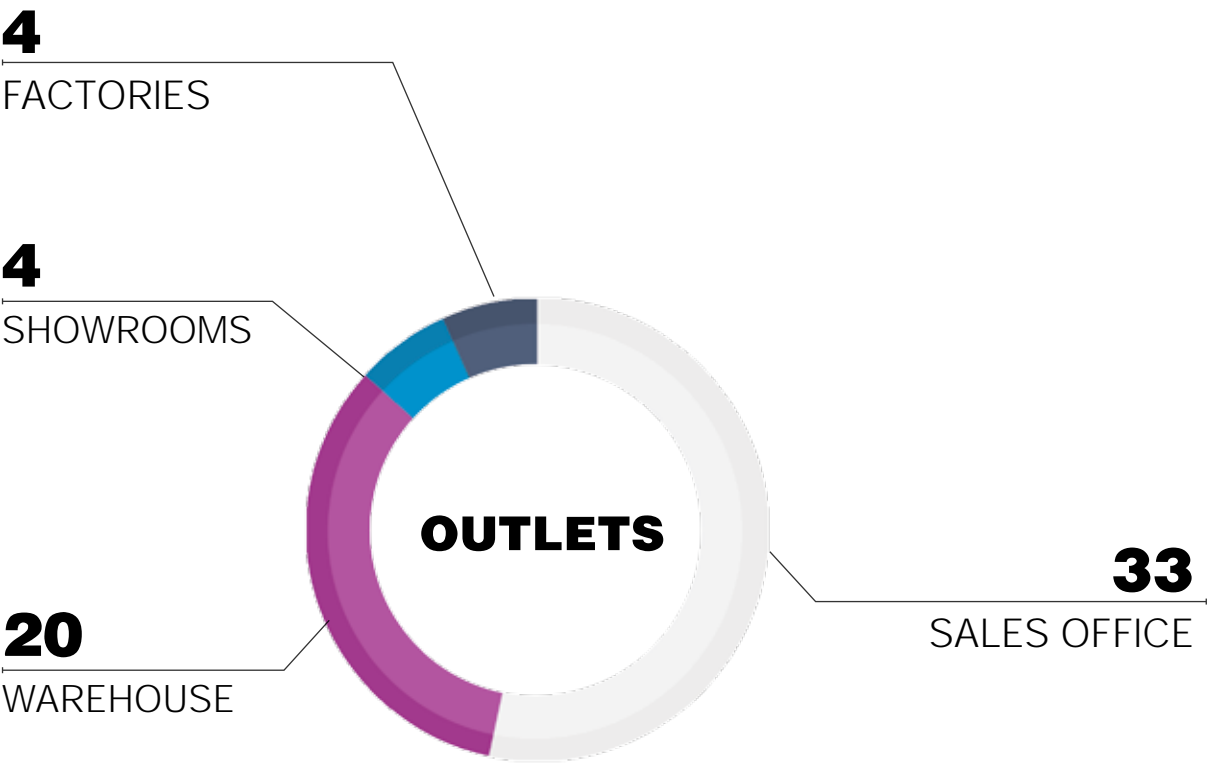
We have the conviction to be the leader in building & construction industry through:

- Providing Excellence in Services with Passionate and Educated Sales Force
- Strengthen Culture through Unified Sense of Purpose
- Innovative Product Range which is Customer Centric
- Reputable and Quality Service Company
- Attracting, Engaging and Retaining Talent

UNITECH REVENUES



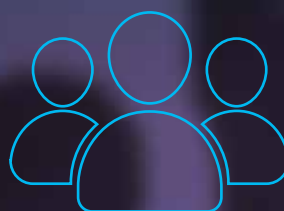
60
LOCATIONS



EMPLOYEES

Unitech's family of employees consists of experienced, well motivated and dedicated team of engineers, technicians, sales executives and management staff.

This team is committed to serve our costumers, with the best solutions available in the market.



26

NATIONALITIES

are distributed among the 1649 employees

1649

EMPLOYEES

in 2019

BUSINESS SYNERGY

- Unitech's strategy continues to focus on accelerating its business throughout the region, to service the construction sector via superior products & solutions, backed up by a highly experienced people in the field. Unitech also aims to enhance its geographical presence in its areas of interest, and where opportunities exist.
- We combine a deep understanding of building and construction materials markets with a successful history of upgrading our products and developing our processes. We have the human skills, the know-how and the product to service major construction projects, medium sized to mega projects taking in care our positive contribution to our societies

WE THRIVE TOWARDS **EXCELLENCE** BY ACKNOWLEDGING:

- Customer Satisfaction
- Employees Retention
- Partner and Supplier Relations
- Positive Influence on Society and Environment

OUR DIVISIONS

Our divisions are dedicated specialized entities, each focusing on the trading of specific segments. These divisions enjoy a vast experience in their areas of expertise combined with skilled human assets of engineers and technicians.

UNIMETAL

Unimetal is specialized in the sales of Construction Steel Products. It offers a wide variety of MEP steel solutions, façade mechanical works, blockwork products, garbage and linen chutes, and several other steel items for the construction industry.

BETA CONTECH

Betacontech is engaged in the trading and installation of several advanced architectural and industrial products; raised flooring, impact protection systems, expansion joint covers, lockers and partitions, and many other advanced products for the construction industry.

UNIPRO

Unipro is focused on the sales of specialized building products. Through its versatile range of products that suits the various needs of medium to large scale projects, Unipro provides quality products from internationally well-known manufacturers; concrete work supplies, insulation and protection materials, waterproofing products, non metallic cable management systems and several other products.



MANUFACTURING ARM - SFSP

- SFSP is a leading manufacturer and fabricator of steel construction products in the region, servicing the construction sector through its state of the art facilities which are spread all over the region
- Products of SFSP are manufactured from quality raw material according to the relevant international standards to meet the requirements of MEP, façade, blockwork and waste management projects



COMMITMENT **TO** QUALITY

Our commitment to quality is clearly revealed in the way we do our business; our processes, our close interaction with our clients as well as the strict product inspection procedures.

To achieve this, we have implemented quality systems and processes that are continually being improved to satisfy our customers' erupting needs.

PRODUCT DEVELOPMENT

Product development process is substantial to the success of our business. We leverage all resources to provide up-to-date reliable products, environmentally friendly, durable to withstand the toughest weather conditions.

Our engineers are constantly testing the products, seeking to present a combination of performance and quality for all our products.



VALUE CHAIN

- Our value chain starts up with the quality of the raw materials and never ends up in client satisfaction. Our business practices backed up by all technologically essential business elements are supported by an efficient logistics, warehousing and delivery system that maintains a valuable supply chain for products.
- The value chain is integrated in our business module, giving us the strength and preserving a good reputation gained through the past 4 decades

ENGINEERING SPECIALTY

Our products development engineers integrate their vast knowledge to provide the perfect solution to projects within the required specifications and timeframe. The product development department maintains highly skilled calibers with a dedication towards efficient and reliable solutions even in the most complicated cases where delicacy and skillful approaches are indispensable.

DESIGN AND PRODUCT **SAFETY**

Our design and engineering office in Stuttgart ensures our products comply with relevant European and international standards of fabrication, taking into attention the safety factors which governs the public safety of projects.

SUSTAINABILITY AND RESPONSIBILITY

We are working hard to reduce our environmental footprints while maintaining the high quality and safety standards. We have set our targets to become three times more efficient in the next 10 years.

Our responsibility towards our stakeholders is valued through our positive contributions towards our colleagues, our business partners and our communities as well.

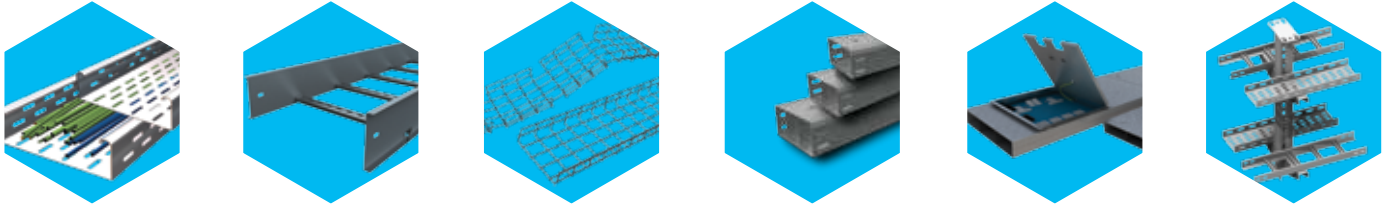


.1. MEP SOLUTIONS

- CABLE MANAGEMENT SYSTEMS
 - Cable Trays & Accessories
 - Cable Ladders (Welded & Swaged)
 - Basket Trays & Accessories
 - Cable Trunkings
 - Underfloor Trunkings
 - Cable Support Systems
- C CHANNEL STRUT SYSTEMS
- PIPE CLAMPS & HANGERS

- CABLE MANAGEMENT SYSTEMS

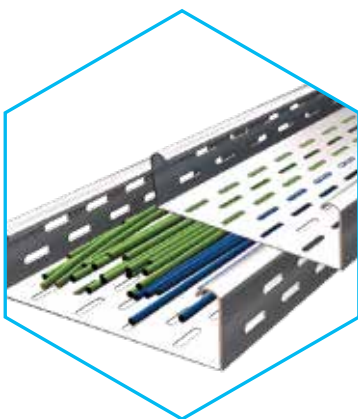
Cable Management Systems are economical wire and cable management systems designed to meet most requirements of cable and electrical wire installations and comply to international standards of fabrication and finishing.



STANDARDS

Cable Management Systems' types fittings and accessories from SFSP are manufactured in compliance with :

- IEC 61537:2006
- BS EN 61537:2007 International Electrotechnical Commission
(Cable Management, Cable Tray Systems and Cable Ladder Systems)
- SASO IEC (61537:2006) Saudi Standard
(Cable Management, Cable Tray Systems and Cable Ladder Systems)
- NEMA VE 1 - 2017 National Electrical Manufacturers Association.
(Metal Cable Tray Systems)
- NEMA VE 2 - 2013 National Electrical Manufacturers Association.
(Metal Cable Tray Installation Guide Lines)
- NEC (ANSI / NFPA 70) National Electric Code
(Metal Cable Tray Guide Lines)



Cable Trays & Accessories

Cable trays provide significant advantages in cable filling over other wiring methods, resulting in savings in the size or number of raceways required and reducing both material and labor costs

Material Thickness

1.0 mm | 1.20 mm | 1.50 mm | 2.00 mm

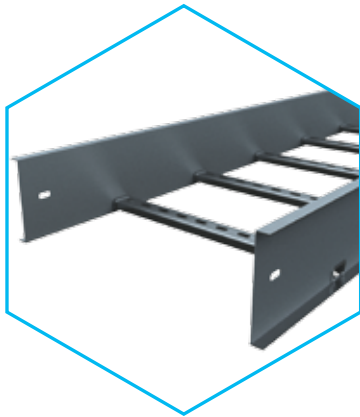
Side Heights:

50mm, 75mm, 100mm

Available Widths:

50, 100, 150, 200, 225, 300, 400, 450, 500, 600, 700, 800, 900, 1000 mm

Fittings: Bend 45°, Bend 90°, Intersection, Outside Riser Bend 45°, Inside Riser Bend 45°, Outside Riser Bend 90°, Inside Riser Bend 90°, Tee Branch, Reducer



Cable Ladders

Rung Types (Swaged And Channel)

Material Thickness

1.50 mm, 2.00 mm, 2.50 mm

Swaged Type (Aluminum & Steel)

- Rounded tubular with 25 mm diameter
- Rung standard spacing 229 mm

Channel Type (Steel)

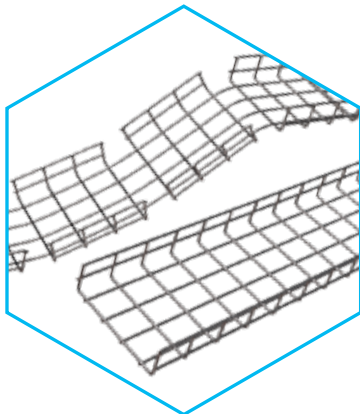
- Plain or slotted, and can be mounted upwards or downwards.
- Rung standard spacing 229 mm

Rail Types

- C-Type, Z-Type and R-Type

Side Heights: 150, 225, 300, 450, 600, 750, 900 mm

Fittings: Bend 45°, Bend 90°, Tee Branch, Horizontal Cross (Intersection), Inside Vertical Elbow (Inside Riser), Outside Vertical Elbow (Outside Riser), Straight Central Reducers, Right Hand Reducers, Left Hand Reducers.



Basket Trays & Accessories

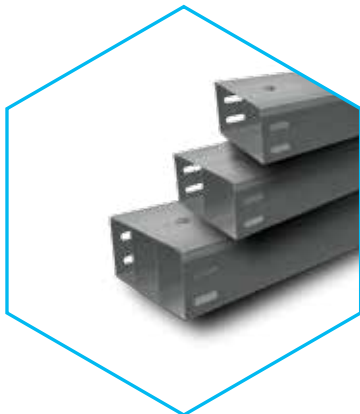
Basket Tray System enables fast and simple connections with limited need for tools. Its design allows continuous airflow, and prevents the buildup of dust, contaminants and bacterial proliferation.

Wire Ø: 4mm

Side Heights: 55mm, 80mm, 105mm, 150mm

Widths: 50, 100, 150, 200, 300, 400, 500, 600 mm

Fittings: 90° Bends, Outside Inside Bends, Vertical Inside Bends, Horizontal Tees (Cross), Reducers - Central Reducers, Left & Right Reducers



Cable Trunkings

Cable Trunkings are used to protect cables from damage and dust and are square in shape. Our cable trunkings system comes in a variety of thickness and sizes and is available in three types: Single, double, and triple compartments.

Available Thicknesses: 1 mm - 1.2 mm - 1.5 mm

Lengths: 2400 and 3000 mm

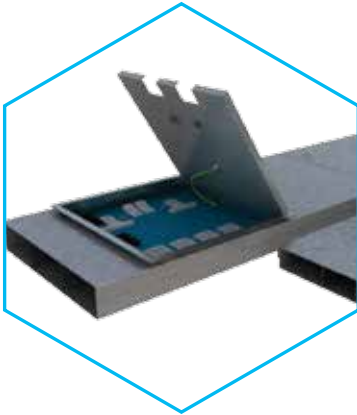
Fittings: Bend 45° Top Lid, Bend 45° Inside Lid, Bend 45° Outside Lid, Bend 90° Top Lid, Bend 90° Inside Lid, Bend 90° Outside Lid, TEE Bend Top Lid, TEE Bend Inside Lid, TEE Bend Outside Lid, Intersection, Reducers.

Dimensions:

50 x 50 mm
75 x 75 mm
100 x 50 mm
100 x 75 mm
100 x 100 mm

150 x 50 mm
150 x 75 mm
150 x 100 mm
150 x 150 mm
200 x 100 mm

300 x 100 mm
450 x 100 mm
600 x 100 mm



Underfloor Trunkings

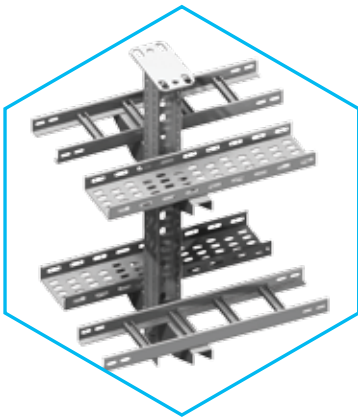
Underfloor Trunking Systems solutions incorporate a range of products for the distribution of power and data services, it is a coordinated set of containments that protect, segregate, contain, and route cables within a given environment.

Flush Floor Trunking System includes:

- Trunking
- End cap
- Junction box
- Coupler and leveling kit
- Fixing bracket and leveling for trunking
- Leveling for junction box
- Riser
- Floor box (support plate + lid and trim) Socket outlets and data socket plates to be ordered separately

Screed Floor Trunking System includes:

- Ducting
- Coupler
- junction box
- Fixing bracket
- Vertical trunking such as DLP
- Riser
- Floor box (back-box + lid and trim) Socket outlets and data socket plates to be ordered separately

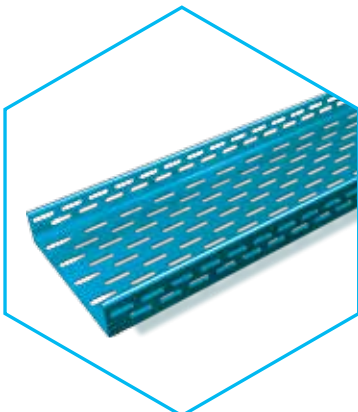


Cable Support Systems

Cable Support Systems are well designed to provide necessary support for cable trays, cable ladders and trunkings. Cable supports are manufactured according to common standards from high quality raw materials.

- Cantilever Arm Bracket 41x21x2.5 mm
- Cantilever Arm Bracket 50x20x2.5 mm
- Cantilever Arm Bracket 50x25x2.5 mm
- Cantilever Arm Bracket 41x21x2.5 mm B2B
- Cantilever Arm Bracket 41x41x2.5 mm B2B
- Cantilever Arm Bracket 50x20x2.5 mm B2B
- Cantilever Arm Bracket 50x25x2.5 mm B2B

- U-Support with welded-on head plate
- I – Support U-Support with welded-on head plate
- U Support Wall Bracket
- I-Support Wall Bracket



Fiberglass Reinforced Plastic

SFSP Fiberglass Reinforced Plastic Cable Management Systems are designed, manufactured, and tested to be installed in most harsh environmental conditions of onshore and offshore facilities for several industries including Oil and Gas, Petrochemicals, Manufacturing, Mining and others.



C CHANNEL STRUT SYSTEMS

C-channel metal framing is cold formed on modern rolling machines from low carbon steel manufactured according to BS 6946:1988. A continuous slot provides the ability to make attachments at any point.

Finishes: Pre-galvanized steel - Hot Dip Galvanized Steel - Stainless Steel

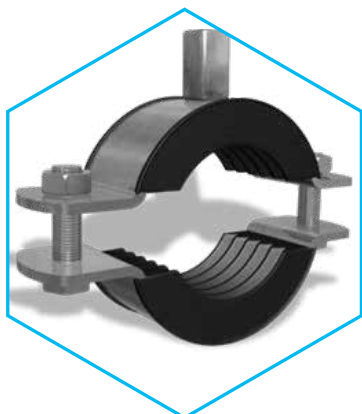
Thicknesses: 1.5, 2.0, 2.5 mm

Channel Dimensions		Thickness
Height "H"	Width "W"	
21.0 mm	41.0 mm	1.5 mm
41.0 mm	41.0 mm	1.5 mm
25.0 mm	50.0 mm	1.5 mm
21.0 mm	41.0 mm	2.0 mm
41.0 mm	41.0 mm	2.0 mm
25.0 mm	50.0 mm	2.0 mm
21.0 mm	41.0 mm	2.5 mm
41.0 mm	41.0 mm	2.5 mm
25.0 mm	50.0 mm	2.5 mm



Cantilever Arm Brackets - SCA

Cantilever Arm Bracket B2B - SCA



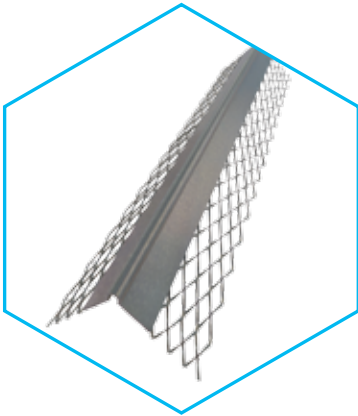
PIPE CLAMPS & HANGERS

Pipe Clamps and Hangers are used in the support of pipes and equipment are manufactured according to the highest standards of fabrication. A diversified choice of Pipe Hangers, Pipe Clamps, EMT Straps, Omega Clamps, Beam Clamps, J and U-Bolts and Threaded Accessories.

Applicable Standards

- BS 3974 Specifications for pipe hangers and support
- ASTM F 708 (standard practice for design and installation of rigid pipe hangers)
- Federal Specifications: WW-H-171 E (Hanger and Support)
- A-A-1192 A (Bracket, Pipe)
- ANSI/MSS SP-58 Pipe Hangers and Supports - Materials, Design, Manufacture, Selection, Application, and Installation
- MSS SP-69 Pipe Hangers and Support-Selection and Application
- MSS SP-77 Guidelines for Pipe Support Contractual Relationships
- MSS SP-89 Pipe Hangers and Support-Fabrication and Installation Practices
- MSS SP-90 Guidelines for Terminology for Pipe Hangers and Support
- MSS SP-127 Bracing for Piping Systems Seismic - Wind - Dynamic Design, Selection, Application

.2. BLOCKWORK AND PLASTERING SOLUTIONS



EXPANDED METALS, PLASTER BEADS

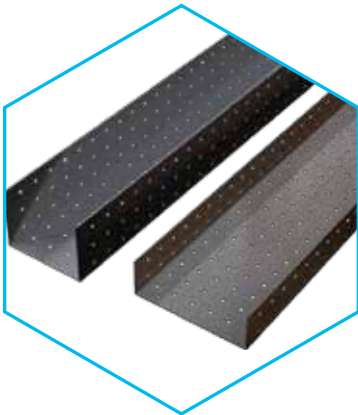
Expanded Metals help the formation of joints, protection of corners and resistance against cracks, chips and impact damage.

Relevant Standards:

- BS EN 13658 – 2
- BS EN 845-3:2003+A1:2008
- ASTM C847-18
- ASTM A 951/A 951M - 2016

Products

- ANGLE BEAD
- PLASTER STOP BEAD
- MOVEMENT BEAD
- ARCHITRAVE BEAD
- METAL SHEET LATH
- RIB LATH
- BR MESH
- WALL TIES



STEEL LINTELS

Standards:

- BS EN 845-1:2013+A1:2016
- BS EN 845-3:2013+A1:2016
- BS EN 845-2:2013+A1:2016
- ASTM A1064 / A1064M

Steel lintels offers an economical, efficient and timely effective solution when compared to ordinary lintels. Steel lintels range have safe working loads ensure the most safe application for installers, taking into account the different loading arrangements.



BLOCK LADDER REINFORCEMENTS

SFSP ladder and truss types are used for the reinforcement of brick and block masonry to give improved tensile strength to walls subjected to lateral loading e.g. wind and seismic.

Block reinforcements reduces the risk of cracking either at stress concentration around opening.



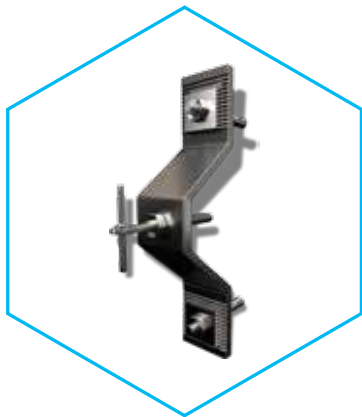
BLOCK WORK ACCESSORIES

Manufactured as per BS EN 845-1:2013+A1:2016

Frame cramps with a single 7mm diameter hole or an 8mm x 30mm vertical slot can be fixed to concrete, steelwork or masonry.

- Debonding Cavity Block Tie
- Dove Tails
- Adjustable Wall Ties
- Cavity Wall Ties
- Double Triangle Wall Ties
- Debonding Control Joints Flat Tie
- Hammer-On Section
- R2-Type Wire Tie
- Z- Type Wire Tie
- Butterfly Wall Tie
- Adjustable Head Restraint
- Partition Top Angle
- Partition Top Rod Anchors
- Sure - Tie for Steel

.3. FAÇADE WORK SOLUTIONS



MARBLE & GRANITE MECHANICAL CLADDING SYSTEMS

Stangle Cladding Fixation includes design, calculation and production of several types of mechanical fixings and accessories used for cladding purposes. Stainless and galvanized steel are among the various materials used in the fabrication.

Standards:

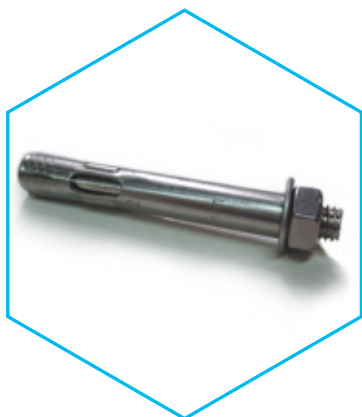
- ASTM A276 / A276M
- ASTM A666 - 15
- BS 8298-1:2010
- BS 1449-1.1:1991
- BS EN ISO 3506-1:1998
- BS 5950-1:2000
- BS EN 1991-1-4:2005+A1:2010
- BS EN 10277:2018
- DIN EN 1992-1-1: 2013
- DIN EN 1992-3: 2011
- DIN 1053-41: 2018
- DIN 18516-3: 2018
- DIN EN 1994-1-1: 2010
- DIN EN 1993-1-1: 2017-09

Material:

SS304, SS316, SS316L, SS316Ti, S235JR-MG, S235JR-HDG

Brackets:

- L-Bracket (Standard & Serrated)
- L-Bracket (Standard & Serrated) Up Angle
- L-Bracket (Standard & Serrated) Down Angle
- L-Bracket (Standard & Serrated) Up and Down Angle
- Z-Bracket with Back Leg
- Omega Bracket
- Fishtail up & down
- Fishtail with Pin
- Load bearing and restraining corrugated stud.



CONCRETE ANCHORING SYSTEMS AND ACCESSORIES

A range of concrete anchors of variable lengths and finishes with Low energy impact and power-saving assembly.

Material:

- Zinc Plated Steel.
- Stainless Steel [SS 304 (A2), SS 316 (A4)].

Anchors

- Expansion Joint Steel anchoring: Suitable for all screws or threaded bolts with metric thread, with Inside threaded anchor, allowing great flexibility.
- Drop in Anchor: Provides permanently fixed threaded socket in concrete at a low setting depth to reduce drilling time.
- Sleeve anchor: Provides optimum performance in most base material types and an effective force distribution in the drilled hole
- Through (Wedge) Anchor: Special design of the clip in stainless steel which ensures a safe hold in the hole. Torque controlled expansion.
- Shield Anchor: Force controlled expansion with flexibility inside threaded anchor. Pressed steel segment ensures consistent dimensional accuracy.



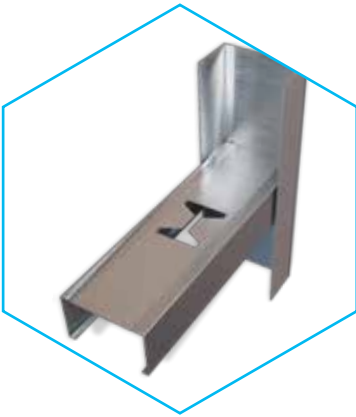
METAL FRAMING SYSTEMS

Metal framing Floor to floor system using front to back channels with support plates provides a solution for a variety of brackets according to the cavity between the panel and the backwall

A complete system is available including channels, brackets, anchors, spring nuts, and concrete anchors

For higher cavities up to 300 mm, a metal framing system back support system for adjustable large cavities is used with support brackets

.4. PARTITIONING SOLUTIONS



DRY WALL & CEILING PROFILES

Profiles for drywall and ceiling are manufactured in accordance with ASTM C1047 and ASTM-C645 requirements. They are made from:

Pre-galvanized steel complying with:
 - BS EN 10143:2006
 : steel grade Z2,
 zinc coating type G275.
 - ASTM A653-G90
 - DIN EN 10147

Types of Profiles:

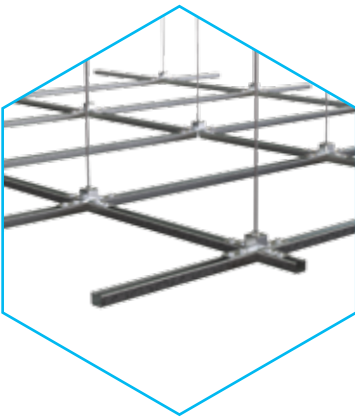
For Drywall

Studs
 Runners
 Ceiling Channels
 Omega Channels
 Deflection Track
 Shaft Wall Track

For Ceiling

Main Ceiling Channel
 Furring channels
 Wall Channels

.5. CEILING GRID SYSTEMS



METAL CEILING GRID SYSTEMS

SFSP Ceiling Grid System is a practical, convenient ceiling system. It has a complete range of main c-channel sections and complementary parts so that you can adapt the modules to suit your design needs and load requirements.

.6. WASTE MANAGEMENT SOLUTIONS



GARBAGE & LINEN CHUTES

Chutes are very convenient, simple and low cost method of controlling and disposing of refuse and linen. SFSP Chutes meet the most stringent requirements of environmental health and safety. Chutes are used as original equipment in new buildings, such as: hotels, hospitals, high rises and residential towers.

Finishes: SS 304, SS 316, GI Galvanized Steel

SFSP provides the following material gauges:

- 1.5mm (16 Gauge)
- 2.0mm (14 Gauge)
- 3.0mm (11 Gauge)

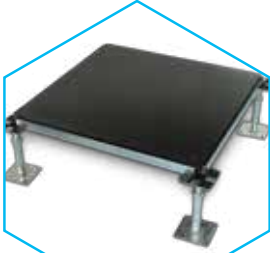
SFSP chutes are available with the following standard internal diameters:

500mm (20"), 550mm (22"), 600mm (24")
 700mm (28"), 800mm (32"), 900mm (36")

System includes:

- Chute Tube
- Intake Throat
- Hopper Door
- Clamp Ring & Supporting Frame
- Access Door
- Elbow
- Fire Cut Off Door
- Control Panel
- Disinfecting & Sanitizing Unit
- Solenoid Valve
- Tube with Insect Screen & Exhaust Fan
- Cleaning System & Brushing Device
- Cleaning & Fire Sprinklers
- Garbage Container
- Compactor

.1. FLOORING SYSTEMS



RAISED ACCESS FLOORINGS

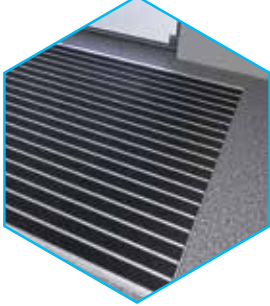
Raised Access Floorings are used for general offices, call centers, computer rooms, pumping stations, control rooms, etc. The core of the panel is either from wood, calcium sulphate, or cementitious composite providing excellent lateral stability along with easy access for low, medium and heavy-duty applications with adjustable pedestals.

Stringered or stringerless understructure with various types of coverings are available including high-pressure laminate panels.



FLOORING SOLUTIONS

Beta Contech offers high-quality floor coverings such as linoleum, LVT, carpet tiles, vinyl & entrance flooring solutions that focus on sustainable flooring, functionality & design.

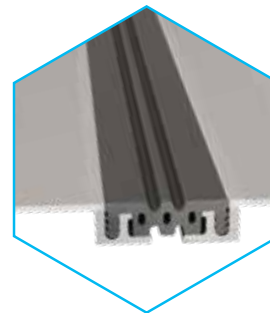


ENTRANCE MATTING SYSTEMS

Our Entrance Matting Systems provides heavy duty entrance mats composed of aluminum profiles with carpets, brushes or rubber inserts. The combined actions of these materials perform as a dirt barrier preserving the cleanliness of the facility's flooring.

Our durable matting systems provide the most suitable solution for removing, absorbing and retaining dirt and moisture.

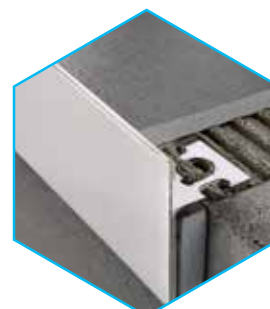
.2. ARCHITECTURAL EXPANSION JOINT SYSTEMS



A comprehensive range of durable Expansion Joint Solutions for a wide array of applications including commercial centers, shopping malls, railway stations, airports, shopping centers, bridges, schools, hospitals, and several other areas of application.

Our Expansion Joint Solutions are designed to safely absorb the heat-induced expansion and contraction of concrete slabs, to absorb vibration, and to allow movement. Our variety of expansion joints includes profiles for walls and floor, for pedestrian as well as heavy loads traffic, for seismic movements, and several other uses.

3. TECHNICAL PROFILE SYSTEMS



A vast range of profiles for walls and floors, tiles movement, separation profiles, stair nosing. Our profiles are made from PVC, aluminum, brass and stainless steel to satisfy all sorts of requirements and uses in the laying/fixing of floors in tiles, wood, carpeting, linoleum, marble, laminated wood, melamine-coated wood and others.

- WALLS & FLOORS
- STAIR NOSING

.4. BUILDING IMPACT PROTECTION SYSTEMS

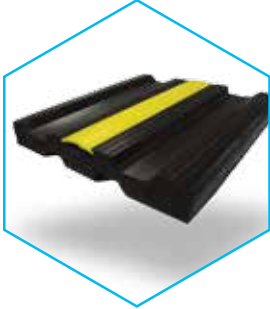


A- INTERNAL

ARCHITECTURAL & INDUSTRIAL IMPACT PROTECTION SYSTEMS:

- Handrails: sculpted, flat and cylindrical profiles
- Wall Guards: flat and sculpted - Accent Rails
- Chair Rub Rails: flush and surface-mounted
- Corner Guards: flush and surface-mounted
- Vinyl Doors and Frame Guards

Material: vinyl, aluminum, wood, clear lexan and stainless steel



B- EXTERNAL

SPEED BUMPS & BUMPER GUARDS

Speed Bumps and Bumper Guards are used extensively in commercial parking garages and building service areas for vehicular, human and parking safety. Their profiles are designed to maximize wall surface area protection and high impact absorption.

HEAVY DUTY WALL AND CORNER GUARDS

Heavy duty wall and corner guards are provided to withstand heavy impacts in parking, logistics and industrial facilities.

Profiles are produced from EPDM Rubber, Natural Rubber, Styrene-Butadiene Rubber, Recycled Plastic, and Neoprene.

.5. PARTITIONS AND LOCKERS



Phenolic compartment and partitioning systems from Beta Contech are manufactured and customized to meet the precise needs of simple to complicated projects with its top-notch finish, quality of material and within a timely delivery.

A complete solution with a wide selection of colors and textures are available. Our Solutions include Toilet Partitions, Washroom Cubicles, Urinary Screens, Dressing Rooms, Privacy Separators, and Lockers. Our panels are manufactured from Black Phenolic covered with HPL panels to withstand harsh utilization conditions, while accessories are installed in stainless-steel finish.

Our systems are suitable for high traffic public buildings, malls, entertainment centers, gyms and sports, educational and healthcare, sports facilities, etc.

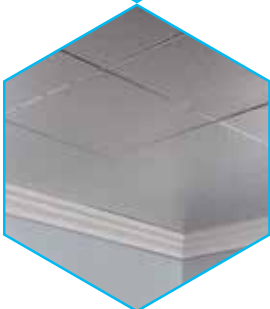
.6. CEILING TILES



ACOUSTICAL CEILING TILES

Ceiling panels and acoustic ceiling come in a variety of modular sizes for suspended ceiling systems.

Design beautiful and comfortable spaces with our wide range of acoustic ceiling tiles and wall panels to ensure an optimal indoor environment.



ALUMINUM CEILING TILES

Aluminum ceiling tiles are available in different dimensions in square shape to fit the requirement of your projects, yet, providing an easy access to ducts and electro-mechanical components with its accessible flat recessed layout of tiles. Our Aluminum ceiling tiles system is usually installed where high level of maintenance is required throughout the year. It comes with stable interlocking feature, with a durable, washable, smooth surface permitting an easy installation of required lights and ventilation.

.1. CONCRETE WORK SUPPLIES



CONCRETE ACCESSORIES

Formwork Accessories include tie rods, thru sleeves, base plates, wing nuts, anchor nuts, thru cones, water barriers, chamfers, and others.



PVC WATERSTOPS

UNITECH Waterstop (a high grade flexible polyvinyl chloride waterstop) is designed for use in any concrete structure which contains joints and is subjected to a hydrostatic load on one face of the structure. It prevents water movement through concrete joints in water reservoirs, canals, dams, sewage treatment plants, bridges, stadiums, basements, floor slabs, parking garages and similar structures.



HARDENED STEEL NAILS FOR CONCRETE

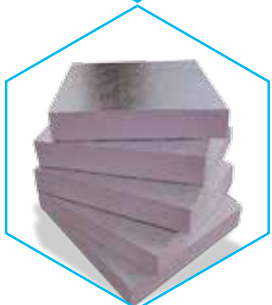
DON QUICHOTTE concrete nails is the leader in nail fixing, high hardness and flexibility. manufactured from special high carbon steel.

.2. INSULATION AND PROTECTION SOLUTIONS



GEOTEXTILES

A natural choice in designing, building and constructing works including roads and highways; ground, drainage and filtration systems; hydraulic works, waste disposal sites and water purifying plants.



EXTRUDED POLYSTYRENE THERMAL INSULATING BOARDS

Extruded Polystyrene rigid thermal insulation boards mainly used for insulating roofs, walls and floors from severe climate conditions. Insulation boards, manufactured according to ASTM C578, also help the prevention of ultraviolet rays from penetrating roofs, walls and floors.



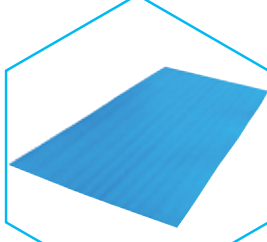
BITUMEN IMPREGNATED WOOD FIBER FILLERS & PROTECTION BOARDS

Bituboard is manufactured from highly resilient softwood fibers coated with bitumen. It is dry and clean, and cannot extrude any form of staining matter and it is resistant to moisture penetration and ice formation in the joint. It is immune to dry and wet rot, fungus and most forms of insect attack or similar forms of deterioration.



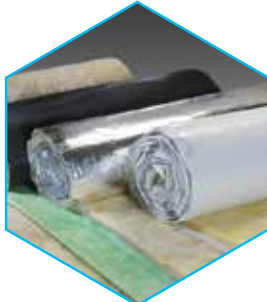
POLYETHYLENE VAPOR BARRIERS

POLIANE Polyethylene Vapor Barriers are resistant to alkalis, salts, acids and chemicals found in sub-soils; fully stable and waterproof. It resists diffusion of moisture through the wall, floor, ceiling, or roof assemblies of buildings to prevent interstitial condensation.



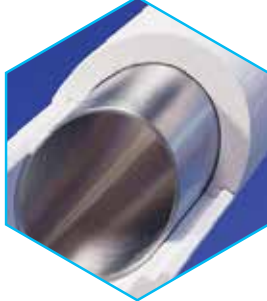
POLYPROPYLENE PROTECTION BOARDS

Poly Board is a semi flexible polypropylene based board for waterproofing membrane protection. It is extremely strong in puncture resistance. It enjoys flexibility which enables its use for tacking corners, protrusions, rounded surfaces, and uneven surfaces.



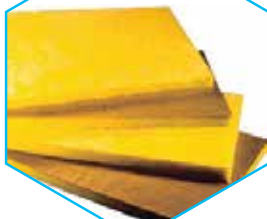
INSULATION SYSTEMS

Rockwool Blanket conforming to ASTM C553 and ASTM C665 is a lightly bonded insulating material available with or without facing. These products can be faced on one side or both sides to form a firm but flexible multi-purpose insulating materials.



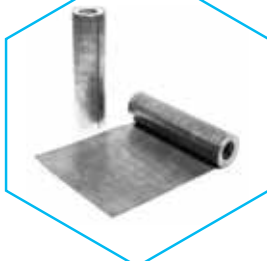
THERMAL CERAMICS

High performance thermal ceramics products significantly reduce energy consumption and emissions in a variety of high temperature processing applications, forming a fire barrier against flames.



FIBER GLASS INSULATION

Fiberglass or glass wool insulation for thermal and acoustical requirements in projects. Available in multiple dimensions and thicknesses.



RADIATION PROTECTION SHIELDS

UNITECH Lead Sheet is generally the most cost-effective radiation shielding material to protect against the effects of gamma rays and x-rays.

.3. WATERPROOFING SOLUTIONS



FLUID-APPLIED WATERPROOFING MEMBRANES

Tremproof 250GC is a rapid-curing, high-solids, VOC compliant modified polyurethane waterproofing membrane. It can be applied to damp and green concrete.



BITUMEN MODIFIED MOISTURE CURING POLYURETHANE MEMBRANES

Tremproof 60 is an effective membrane for use on concrete, wood, metal and other masonry surfaces and also can be used as an accessory waterproofing system.



TWO-COMPONENT, CEMENTITIOUS MORTAR FOR WATERPROOFINGS

Mapelastic Smart is used to protect concrete structures, renders with hairline cracks and cementitious surfaces in general which, being subject to vibrations, may suffer from cracking, and for waterproofing hydraulic projects such as channels, faces of dams and swimming pools, basins, storage tanks, balconies and terraces.



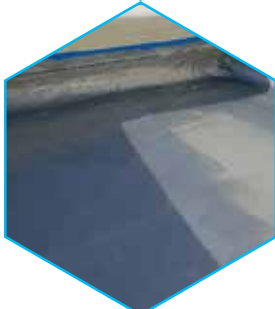
LIQUID-APPLIED POLYURETHANE WATERPROOFING MEMBRANES

Premium, liquid-applied, highly permanent elastic, cold applied and cold curing, one component polyurethane membrane used for long-lasting waterproofing. POLY TI is based on pure elastomeric hydrophobic polyurethane resins.



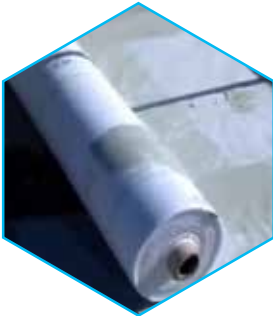
ONE COMPONENT ALIPHATIC POLYURETHANE COATINGS

Single component moisture curing extended polyurethane liquid applied elastomeric membrane for waterproofing and protection of a wide range of surfaces.



TOP COATS FOR WATERPROOFING MEMBRANES

Pigmented, color, and UV-stable, highly permanent elastic, cold applied and cold curing, one component aliphatic polyurethane coating, used as a top-coat for protection over exposed, polyurethane waterproofing coatings.



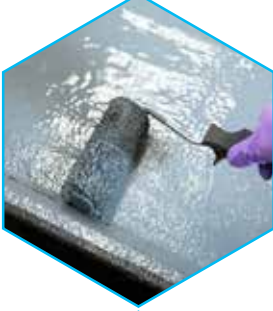
REINFORCING FABRIC FOR THE WATERPROOFING MEMBRANES

Polyester, non-woven geotextile (60-65 gr/m²). It is mainly used as a reinforcing fabric for use in combination with POLY TI liquid applied waterproofing membranes.



PRIMERS FOR LIQUID-APPLIED WATERPROOFING MEMBRANES

A transparent, rigid, deep penetrating, one component, quick drying polyurethane solvent-based primer. Used as a primer in waterproofing and sealing applications on absorbent surfaces.



WATER BASED, POLYURETHANE LIQUID APPLIED WATERPROOFING MEMBRANE

A liquid-applied, highly permanent elastic, cold applied and cold curing, water based, one component, modified polyurethane membrane used for long-lasting waterproofing.



ONE COMPONENT ALIPHATIC POLYURETHANE COATINGS

one component polyurethane high elastic self-leveling sealant for construction.



POLYURETHANE FLOOR PRIMER & COATING

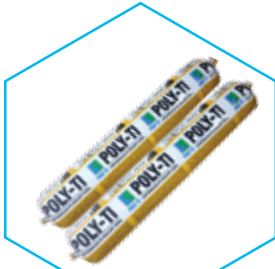
Primer is transparent and semi rigid while coating is a colored, one component, highly durable, heavy duty aromatic polyurethane for floor.



ALIPHATIC POLYURETHANE FLOOR COATING UV-STABLE

Colored, one component, highly durable, aliphatic polyurethane thin-layer floor coating. It is specially designed for use as a floor coating in external surfaces, providing high mechanical strength, high abrasion and chemical resistance.

.4. SEALANTS, ADHESIVES & CHEMICALS



ONE-PART POLYURETHANE SEALANTS

Poly TI is a high performance one-part polyurethane sealant elastomeric weather-resistant, non-sagging, and water tight with excellent adhesion properties designed for use in all types of joints, vertically and horizontally. Poly TI has a movement capability of $\pm 25\%$ of the joint width, making it ideal for joints.



TWO-PARTS POLYURETHANE SEALANTS (SELF LEVELING)

Dymeric 240 is a multi-component high performance epoxidised polyurethane sealant which provides a durable, weather tight seal in dynamically moving joints. THC-900 & THC-901 are multi-component, high performance joint sealants which on thorough mixing, provide trafficable, durable seals in dynamically moving joints.



BACKING RODS

Extruded closed cell polyethylene foam which is both flexible and compressible. Backing Rods are designed as pre-molded joint fillers for expansion joints in civil engineering and building construction works of all types. They are also suitable for all types of cold applied sealants including silicones, polysulfides, acrylics, butyl rubbers, polyurethanes, general-purpose mastics, bitumen based sealants and putties.



CONSTRUCTION SILICONE SEALANTS

Eagle seal is a prime one-part acetic moisture curing silicone sealant suitable for general construction sealing applications. Eagle seal acetoxysilicone is resistant to moisture.



GLUE FOR MARBLE & GRANITE

Eagle Mastic (2-components polyester) is a synthetic resin-based adhesive with a specific weight between 1.5 and 1.65gr/cm³. Eagle Mastic is specially formulated for use in gluing and filling of all types of marbles, stones and granites.



TILE ADHESIVES & TILE GROUTS

Unifix 401 and 402 are premixed cement based water-resistant mortars for fixing ceramics and glass tiles on walls and floors. Unigrout 201 is a cement-based, polymer-modified tile grout mortar, for filling grout joints.



SEALANTS AND LEAKAGE CONTROL

Waterproofing and protection products from Mapei for concrete structures, renders and cementitious screeds. Two-component cementitious mortar for waterproofing balconies, terraces, bathrooms and swimming pools. Also, products for plugging any source of water, even under pressure, in basements, tunnels, subways and others, and for sealing watertight rigid joints in hydraulic concrete structures, sewers, tanks and canals.



ADHESIVES

BISON provides adhesive products for sanitary ware, material repair, glass structures, glazing, glass and metal reparation, and several other uses that requires highly strong, incomparable specialized adhesion products.



JOINT SEALANTS / MASTICS

The POLY JOINT 30 is a thixotropic, permanent elastic, cold applied and cold curing, one component, low modulus polyurethane elastomer (mastic) used for chalking and joint-sealing. POLY JOINT 30 cures by reaction with ground and air moisture.



POLY TI LOW MODULUS PU JOINT SEALANT

POLY TI Low Modulus PU is a moisture-curing, one component, polyurethane-based, non-sag elastomeric sealant. It is highly resilient and has excellent recovery characteristics. It can function under wide range of temperatures.



SILICONE RUBBER MOLDING SYSTEMS

Eagle Seal Silicon Mold Making Systems are flexible, high tear-strength rubbers. They are used for mold making where it is mixed with its catalyst and then poured around a pattern to create a flexible silicone molds. Eagle Seal Silicon Mold Making Systems have excellent fluid property, good mold release property, weather resistance, thermal resistance, chemical resistance.



FIRE-STOPPING SYSTEMS

STI leads the industry in developing innovative fire protection systems that help stop the spread of fire, smoke and hot gases. STI products and systems offer innovative firestop solutions for all types of new construction and retrofit applications.

.5. MEP NON METALLIC SOLUTIONS



UPVC ELECTRICAL CONDUITS AND TRUNKINGS

High impact UPVC conduits for protection and coating of electrical wires. Our electrical conduits and trunkings are available in a variety of sizes and fittings to suit most applications.



CABLE TIES & NYLON PLUGS

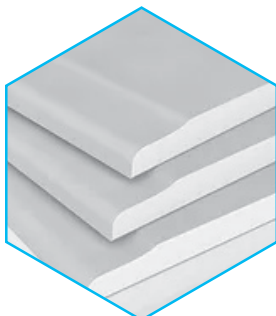
A complete range of cable ties & nylon plugs for all kinds of applications: cable ties for wiring and installation, identification cable ties, special cable ties, heat resistant cable ties, and a wide range of accessories for fixing cables and pipes on different kinds of materials. Elematic production conforms to European Standards, guarantees the application of severe quality parameters on all stages.



HEAT SHRINK TUBINGS

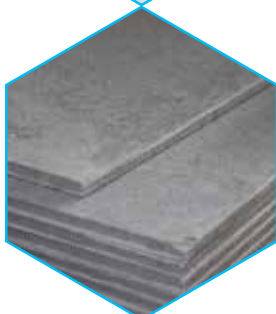
Thin wall heat shrinkable tubing in cross-linked polyolefin, self-extinguishing, flexible and strong, with chemical resistance and safety in the electrical insulation, suitable for general applications.

.6. DECORATIVE AND PARTITIONING SOLUTIONS



CEMENT BOARDS & ACCESSORIES

The strong portfolio of advantages of Fiber cement boards makes the product widely endorsed and appreciated by architects and customers worldwide. Fiber cement boards have been used in many projects and buildings as they save time, money and being aesthetically more beautiful in their appeal.



GYPSUM BOARDS & ACCESSORIES

Gypsum Boards from Unitech are designed for wall and ceiling applications to meet most general construction needs. Gypsum boards have been manufactured to perform in accordance with ASTM C1396 / C1396M - 17.



DECORATIVE BOARDS

Decorative boards made from high density fiber cement board. The surface of the plate is coated with a set of protection materials including fluorine resin, UV single and multicolor coatings.

.7. HARDWARE AND TOOLS



ELECTRICAL POWER TOOLS

AEG Electrical Power Tools comprise the following range: Hammers, drills, percussion drills and diamond drills, screwdrivers and battery tools, wall chasers, angle grinders and straight grinders, jig saws and circular saws and many more to address the most diverse applications in wood, metal, concrete and block. AEG also has its own range of innovative, high-quality accessories designed to perfectly complement AEG power tools.



PROFESSIONAL HAND TOOLS & EQUIPMENT

IRWIN TOOLS manufactures and distributes professional grade hand tools and power tool accessories worldwide for trade professionals who demand superior performance and durability on the job. IRWIN TOOLS' brand portfolio features user-preferred category leaders such as IRWIN, Vise-Grip, Marathon, Quick-Grip, Speedbor, Strait-Line, Unibit, and Hanson.



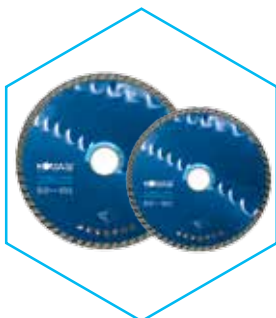
CONCRETE CORING

B+BTEC introduce a complete line of drilling systems, anchoring and saws. These machines are entirely designed, manufactured and assembled in its production facilities in the Netherlands and packed with new quality features. The B+BTEC R&D Division has developed a wide range of Bonds (the metal in which the diamond crystals are sintered) that are engineered for optimal cutting performance and blade life in Concrete, Brick, Masonry and Porothersm Brick & Blocks and are specially designed for today's construction materials.



STAINLESS STEEL CUTTING & DRILLING EQUIPMENT

Diamond3® is the premier manufacturer of Professional Equipment, Tools & Accessories for Tile, Stone, Sanitary Ware, Masonry, Concrete & Brick. Its product line includes: Stainless Steel Cutting Equipment, Drilling & Grinding Equipment, Specialty Diamond Blades, Diamond Drill (Core) Bits and Grinding Wheels.



DIAMOND CUTTING BLADES

Komasi's durable, different applications' cutters used for granite, marble, natural stone and concrete products.

C- SPECIALIZED BUILDING SOLUTIONS



ABRASIVE DISCS AND GRINDING WHEELS

Cutting and grinding discs made for universal use and various material cross sections of metal or steel and stone. They are suitable for sheet metals, profiles and general applications as well as stone.



PRESSURE WASHERS, CHAINSAWS

Pressure washers manufactured by Blackmax provides an easy and reliable use for the outdoor.

Lightweight, easy to handle chainsaws with the ultimate power and the required safety is offered with toolless top cover, chain break and a 35cm full complement bar and chain.



AIR COMPRESSORS, GENERATORS, BENDING & CUTTING MACHINES

Dynamik provide a complete range of Power generators, air compressors, bending and cutting machines.



CUTTING & GRINDING DISCS

XAKT Discs are made from high quality material to provide durability and functionality to professional worldwide. Our cutting and grinding discs are used for multiple applications including Stone, Steel, Stainless Steel, Inox, and others. XAKT discs acknowledge the highest safety requirements as set by oSa, and thus, are manufactured to conform with the specifications that ensure safe usage on various applications.



AIR SPRAY GUN

UniXakt provides quality air spray guns for medium to large jobs with excellent atomization and large cap capacity for automotive, industrial works, and assembly lines as well.

نبذة عن المجموعة

تأسست مجموعة شركات عصام خيري قباني عام ١٩٦٩ بعد افتتاح مصنع نيبرو لصناعة أنابيب البوليفينيل كلورايد والذي يعتبر اليوم من أهم مصانع صناعة الأنابيب في الشرق الأوسط، مع حجم انتاج سنوي يصل لأكثر من ٣٥٠٠٠٠ ألف طن.

مجموعة شركات عصام خيري قباني هي مجموعة متنوعة من حيث المنتجات والخدمات في عدة قطاعات ومنها التجارية، الصناعة والمقاولات. تتألف المجموعة من ٦١ شركة مستقلة، وتضم حوالي ٢٠١ فرع وصالة عرض منتشرة في ١٣ بلد لتغطي أهم المدن في المنطقة، كما يبلغ عدد الموظفين في المجموعة حوالي ١٤,٠٠٠ (إناث وذكور) في كافة المناصب.

إن رؤية مجموعة شركات عصام خيري قباني هي واضحة وهي تسعى لأن تكون المجموعة الرائدة والمنتظمة ذات الاعمال التجارية المتنوعة لتخدم العالم العربي في القطاع الصناعي، وقطاع البناء، والميدان التجاري المتخصص في خدمات الصيانة وإدارة المشاريع. وتهدف المجموعة الى التوسع بمعدل ١٥-٢٠ % سنوياً. وتصنف المجموعة من بين أكبر المجموعات المتخصصة في الشرق الأوسط.

إن مهمتنا هي تزويد العالم العربي بالخدمات الموثوقة في مجموعة متنوعة من القطاعات المتخصصة والمنتجات الحيوية والمساهمة في توفير فرص العمل لآلاف الموظفين، هذا بالإضافة الى توفير فرص التدريب لمئات من الشباب العربي والخريجين في القطاعات التقنية والهندسية. إن مجموعة أعمالنا وفلسفتنا الأساسية تتم وفقاً للأهداف التالية: توظيف وتدريب وراتب ومعاملة جيدة.

نبذة عن شركت يونيتك

تأسست شركة يونيتك عام ١٩٧٩ في جدة، المملكة العربية السعودية تجاوباً مع النهضة العمرانية والإقتصادية التي حدثت في المملكة في تلك الفترة الزمنية.

إعتمدت يونيتك منذ نشأتها خطة استراتيجية تمكنها من التغلب على تحديات السوق من خلال تقديمها مجموعة متكاملة من حلول مواد البناء المتخصصة، ومن خلال توسع إنتشارها الجغرافي في مناطق الشرق الأوسط، أوروبا وشمال أفريقيا وعمدت الى تمييز منتجاتها من حيث النوعية والجودة.

فمت يونيتك مع الوقت لتصبح واحدة من أكبر الشركات التجارية في قطاع مواد البناء في المملكة العربية السعودية، ودولة الإمارات، ومعظم بلدان الشرق الأوسط.

تعتبر يونيتك اليوم شركة رائدة توفر الخدمات والمنتجات العالية الجودة، الأعمال المتميزة وكفاءة ومهارة الموارد البشرية، مع مطابقة عملياتها لأنظمة الجودة الإدارية والبيئية.

تقدم يونيتك مجموعة متميزة ومتخصصة من منتجات الحديد وغيرها من الأدوات المتخصصة كأدوات تثبيت الواجهات الميكانيكية، أدوات حوامل الكابلات، شبك اللياسة، الحوامل الميكانيكية للحجر والرخام، واكسسوارات البلوك. كما تبذل الشركة جهداً كبيراً لتعزيز مجموعة منتجاتها، ومن هنا قامت بإنشاء مصانع التخصصات للمنتجات الحديدية (SFSP) في عدد من بلدان المنطقة، هذه المصانع تقدم مجموعة واسعة من منتجات حوامل الكابلات، أنظمة تثبيت البلوك، الشبك المعدني للياسة، أنظمة تصريف النفايات وغيرها.

بالإضافة الى شهادة ادارة الجودة ISO 9001:2015 اكتسبت مصانع الشركة شهادة نظام ادارة الجودة البيئية وأصبحت معتمدة لـ ISO 14001:2015 في إدارة البيئة، و OHSAS 45001:2018 في الإدارة المهنية وإدارة الصحة والسلامة، فضلاً عن عضوية يونيتك في المجلس الأمريكي للمباني الخضراء والتي تعبر عن توجه شركة يونيتك كشركة تعنى بالجودة والمحافظة على البيئة.

الرؤية والمهمة

الرؤية

الارتقاء بالشركة كي تكون الخيار الأول لعملائنا

المهمة

- بأن نكون الشركة الرائدة في نطاق أعمال البناء والتشييد من خلال:
- توفير خدمات مميزة من خلال فريق مبيعات ملم ومتحمس
- تعزيز ثقافة الشركة عبر توحيد القيم والأهداف
- تقديم مجموعة مبتكرة من المنتجات لإرضاء العملاء
- جذب المواهب واستقطاب الخبرات وتنميتها والحفاظ عليها

UNITECH OFFICIAL REGISTRATION

All Products Manufactured by SFSP are Solely Distributed by SFSP Sister Companies in the Following Countries

KSA

Isam Kabbani & Partners for
Building and Construction
Materials Co. Ltd.

شركة عصام قباني وشركاه لمواد الإنشاء والتعمير
المحدودة

BAHRAIN

Isam Kabbani Trading Est.

مؤسسة عصام قباني التجارية

UAE

Isam Kabbani Trading Est.

مؤسسة عصام قباني للتجارة

EGYPT

UNITECH Egypt for Building
Materials

شركة يونيتك مصر لمواد البناء

OMAN

Isam Kabbani & Partners
For Trading L.L.C.

شركة عصام قباني وشركاه للتجارة ش.م.م

KUWAIT

Hassan Kabbani Est. for General
Construction of Buildings

مؤسسة حسان قباني للمقاولات العامة للمباني

JORDAN

Jordan Build Co. For Construction
& Electrical Materials

شركة بناء الأردن لمواد الإنشاء والتعمير والكهرباء

LEBANON

UNITECH ME s.a.r.l

شركة يونيتك ميدل إيست ش.م.م

PAKISTAN

UNITECH IKK Pakistan (Pvt.) Ltd.

مصنع التخصصات للمنتجات الحديدية

هو الذراع التصنيعي ليونيتك في المملكة العربية السعودية، الإمارات العربية المتحدة، مصر ولبنان وتقوم مهمته على دعم الجهود التي تبذلها يونيتك في تعزيز التنوع في المنتجات الحديدية في السوق.

يونيمتل - UNI-METAL

تختص يونيمتل في مجال تجارة المواد الحديدية للبناء والإنشاءات، وتقوم بتسويق المنتجات الحديدية التي تصنع في مصانع التخصصات للمنتجات الحديدية ومصانع سيغما للمنتجات الحديدية في المملكة العربية السعودية، الإمارات العربية المتحدة، مصر ولبنان.

- حوامل الكابلات ومستلزماتها
- نظام سي تشانل ومستلزماته
- حوامل الأنابيب والمواسير
- التثبيت الميكانيكي للحجر والرخام
- دعائم النوافذ والأبواب واكسسوارات حوائط البلوك
- اكسسوار أعمال اللياسة
- قواطع ألواح الجبس

الشركة الوطنية المتخصصة

للتقنية العمرانية - BETA CONTECH

تؤمن الشركة مهندسين محترفين ومتخصصين في تسويق وتوفير حلول متطورة لقطاع البناء. ومن الاصناف التي تقوم الشركة بتسويقها :

- الأرضيات المستعالية
- أغطية فواصل التمدد
- بروفيل حماية الجدران والزوايا
- الحماية المطاطية للصدمات
- أنظمة الامان لمواقف السيارات
- أنظمة تصريف النفايات والغسيل

يونيبرو - UNIPRO

تقدم يونيبرو حلولاً متعددة لمواد البناء المتخصصة من خلال باقة من المواد التي تتفرع من مواد العزل ولوازم الحماية الى أنظمة حوامل الكابلات البلاستيكية وصولاً الى مواد التثبيتات الخرسانية والعديد من المواد المتخصصة.





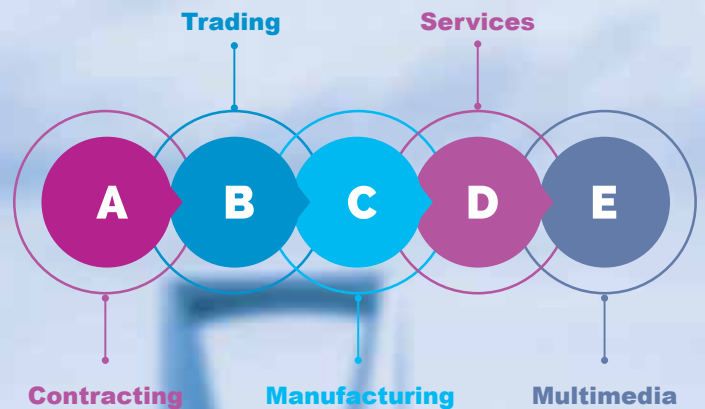
IKK GROUP OF COMPANIES

The IKK Group is a major business institution serving the Arab World in the Industrial, Construction and Trading fields. After five decades in the business, the IKK Group has become one of the leading enterprises in the Region with focus on the Construction Industry in general.

Today, the Group is a pioneer in waterproofing, weather proofing, building material supplies, construction steel products, manufacturing and the fabrication and sales of UPVC, CPVC and high density polyethylene pipes and fittings, as well as in the sales of sanitary products, accessories and many other items and technologies used in the industry. The Group is also represented in the Food, Decoration, and Multimedia business domains.

GROUP ACTIVITIES

The IKK Group is a diversified group in terms of products, services and geography



Composed of 61 companies, the IKK Group operates through 201 divisions, branches and outlets; it is spread over 13 countries, covering all major cities in the region and employing over 14,000 employees.

61
companies

14,000
Employees

201
divisions



13 countries
covering major
cities in the region





Kabbani Construction Group (KCG) is the contracting vehicle of IKK Holding, which is one of the largest and oldest business institutions in Saudi Arabia. Established in 1977 as a roofing contractor in the city of Jeddah, KCG has evolved over the years to become a leading specialized contractor in waterproofing, thermal insulation, concrete repair and protection, construction and maintenance, oil field services, industrial insulation, and infrastructure construction.

Responding to a growing concern for construction solutions, protection and environmental problems, our product range has been carefully chosen to serve today's increasing demand for advanced engineering materials and solutions.

The Company serves the entire Saudi market through its numerous branches across the Kingdom, as well as the Middle East by way of its affiliates in the UAE, Egypt, Lebanon, Kuwait, Bahrain and Oman.

KCG consists of several main divisions, each of which is independently managed to maintain business focus and specialized in its area of expertise and unique in its objective to better serve its clients.

BMC: Waterproofing & Thermal Installation

CRES: Civil Engineering Services

Inspectech: Infrastructure Management Solutions

Structural Systems: Structural Engineering Systems

SOGEC: Specialized Oil & Gas Company

COSMA: Construction Services & Maintenance

ISD: Industrial Services Division

SPD: Special Projects Division

EMCC: Electro Mechanical Contracting Company

ACMS: Airfield Construction & Maintenance Services

KAC: Kabbani Architectural Concepts

KPT OVM: Kabbani Post Tensioning

SUW: Innovative Waterproofing Solutions

Twintec: Steel Fiber Concrete Specialists

Fulaz: Metal Fabrication Services

IK Energy: Sustainable Solutions

BKS: Specialized Services



CONTACTS

KINGDOM OF SAUDI ARABIA

unitech.ksa@ikkgroup.com

Jeddah

Tel : +966 12 627 8222
Fax: +966 12 627 8722

Jeddah - Ghurab Showroom

Tel : +966 12 667 2000
Fax: +966 12 661 4306

Mak kah / Taif

Tel : +966 12 541 1206
Fax: +966 12 532 1675

Mad inah

Tel : +966 14 842 1095
Fax: +966 14 842 1090

Yanbu

Tel : +966 14 390 1499
Fax: +966 14 322 7101

Khamis Mushayt

Tel : +966 17 237 5929
Fax: +966 17 237 8783

Najran

Tel : +966 17 546 3873
Fax : +966 17 546 3873

Al -Baha

Tel : +966 17 237 5929
Fax: +966 17 237 8783

Sharorah

Tel : +966 17 532 8153
Fax: +966 17 532 8153

Gizan

Tel : +966 17 321 6660
Fax: +966 17 321 0665

Riyadh North

Tel : +966 11 415 5465
Fax: +966 11 456 6627

Riyadh South

Tel : +966 11 448 0112
Fax: +966 11 447 7421

Riyadh - West

Tel : +966 11 431 6271
Fax: +966 11 431 7642

Riyadh East

Tel : +966 11 448 0112
Fax: +966 11 447 7421

Qassim / Buraidah

Tel : +966 16 382 3946
Fax: +966 16 385 2186

Hail

Tel : +966 16 543 3931
Fax: +966 16 543 3935

Skakah / Qurayyat

Tel : +966 14 626 3904
Fax: +966 14 626 3905

Tabuk

Tel : +966 14 423 5203
Fax: +966 14 423 5203

Hafr el Batin

Tel : +966 13 729 3644
Fax: +966 13 729 3644

Dammam

Tel : +966 13 859 0097
Fax: +966 13 857 8177

Hufuf / Showroom

Tel : +966 13 586 9732
Fax: +966 13 530 7144

ENGINEERING, DESIGN, MARKETING & MULTIMEDIA,

Unitech Deutschland GmbH

GERMANY

unitech.germany@ikkgroup.com

Stuttgart

Tel : +49 711 6868 7222
Fax: +49 711 6868 7223

Multi-D s.a.r.l

LEBANON

multi-d@ikkgroup.com

Multi-D Beirut

Tel : +961 1 841 155
Fax: +961 1 841 156

BAHRAIN

unitech.bahrain@ikkgroup.com

Manama

Tel : +973 17 874 897
Fax: +973 17 789 470

KUWAIT

unitech.kuwait@ikkgroup.com

Kuwait City

Tel : +965 2 4924 937
Fax: +965 2 4924 938

UNITED ARAB EMIRATES

Dubai - Al Rashidiyah

unitech.dubai@ikkgroup.com
Tel : +971 4 2591 773
Fax : +971 4 2591 774

Abu Dhabi - Musaffah

unitech.auh@ikkgroup.com
Tel: +971 2 552 3393
Fax: +971 2 552 5499

LEBANON

unitech.lebanon@ikkgroup.com

Beirut

Tel : +961 1 858 277
Fax: +961 1 858 276

OMAN

unitech.oman@ikkgroup.com

Muscat

Tel : +968 24 591 006
Fax : +968 24 597 006

JORDAN

unitech.jordan@ikkgroup.com

Amman

Tel : +962 6 556 3030
Fax: +962 6 554 7911

Aqaba

Tel : +962 6 556 3030
Fax: +962 6 554 7911

EGYPT

unitech.egypt@ikkgroup.com

Cairo 6th of October City

Tel : +20 2 3820 6477
Fax: +20 2 3820 6036

PAKISTAN

unitech.pakistan@ikkgroup.com

Lahore - Punjab

Tel: +92 42 32301578

FACTORIES

SFSP - KSA

sfsp.jeddah@ikkgroup.com

Specialized Factory for Steel
Products -

3rd Industrial City / Jeddah

Tel: +966 12 637 4482
Fax: +966 12 636 1963

SFSP / UAE

sfsp.uae@ikkgroup.com

SIGMA Factory for Steel
Products

DIC (Dubai Industrial City)

Tel : +971 4 818 1919

SFSP / EGYPT

sfsp.cairo@ikkgroup.com

Specialized Factory for Steel
Products

6th of October City Giza

Tel : +20 2 3820 6477
Fax: +20 2 3820 6036

SFSP / LEBANON

sfsp.lebanon@ikkgroup.com

Specialized Factory for Steel
Products / s.a.r.l

Tanayel, Bekaa

Tel: +961 8 514 290
Fax: +961 8 514 291





www.unitech-ikk.com
www.sfsp-ikk.com
www.ikkgroup.com

يونيتك

