

UNITECH
For Building and Construction Materials
PRODUCTS PROFILE

يونيتك



UNITECH | A member of the IKK Group of Companies | www.unitech-ikk.com

مجموعة شركات عصام خيرى قباني وشركاه

UNITECH

For Building and Construction Materials
A MEMBER OF THE IKK GROUP OF COMPANIES

www.unitech-ikk.com

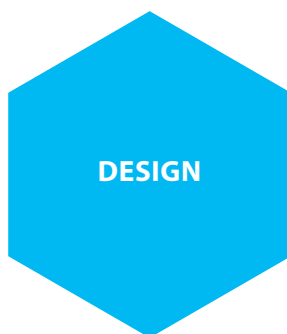
5	●	Vision - Mission - Values
6	●	Revenues
6	●	Outlets Types
7	●	Employees
8	●	Business Strategy
9	●	Our Divisions
9	●	Manufacturing Arm - SFSP
10	●	Commitment to Quality
10	●	Product Development
10	●	Value Chain
11	●	Engineering Specialty
11	●	Design and Product Safety
11	●	Sustainability and Responsibility
		Products Segmentation
12	●	A. Steel Construction Products
20	●	B. Architectural and Industrial Products
22	●	C. Specialized Building Solutions
30	●	The IKK Group of Companies
31	●	Group Activities
34	●	Unitech Official Registration
36	●	Contacts


INDEX

33	●	نبذة عن المجموعة
32	●	نبذة عن شركة يونيتك
35	●	مصنع التخصصات
35	●	يونيتمل
35	●	بيتا كونتك
35	●	يونيبرو

UNITECH

BUILDING AND CONSTRUCTION MATERIALS
Solutions Provider





Unitech for Building and Construction Materials is a "Solutions Provider" company, specialized in the Design, Manufacturing and Trading of Building and Construction Materials in the region.

Unitech is a member of the IKK Group of Companies. It has been present in the market since 1978 and has grown to become one of the leading companies in the supply of building and construction materials.

The company is an ISO QMS 9001:2015 certified company and is a member of the US Green Building Council.

Unitech has an extensive presence covering various cities through the GCC and MENA countries: Jeddah, Riyadh, Dammam, Dubai, Abu Dhabi, Manama, Kuwait, Amman, Beirut and Cairo. The company is present in Europe via its design and engineering office in Stuttgart.

UNITECH **VALUES**

Unitech's core values are based on:



VISION

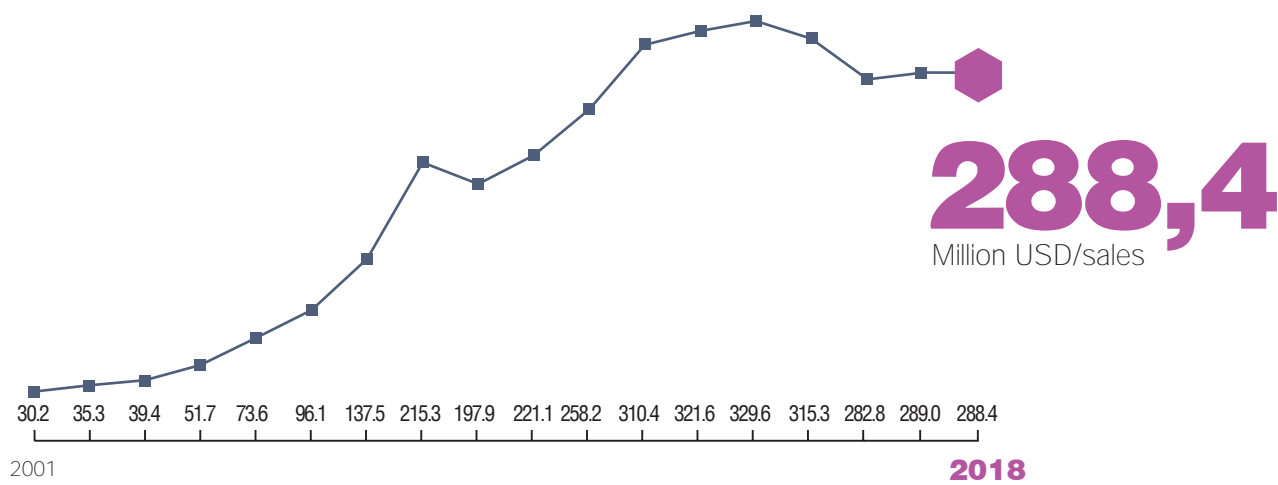
UNITECH to be the Customer's First Choice..

MISSION

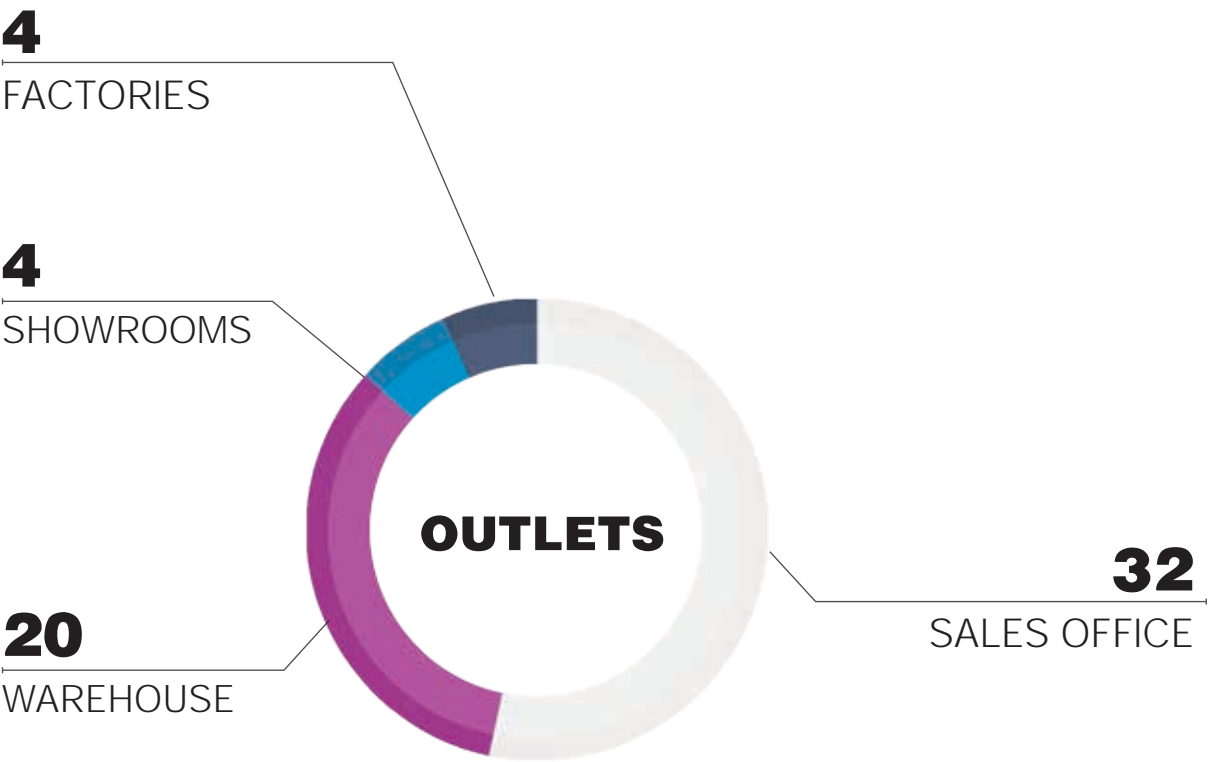
We have the conviction to be the leader in building & construction industry through:

- Providing Excellence in Services with Passionate and Educated Sales Force
- Strengthen Culture through Unified Sense of Purpose
- Innovative Product Range which is Customer Centric
- Reputable and Quality Service Company
- Attracting, Engaging and Retaining Talent

UNITECH **REVENUES**



60
LOCATIONS



EMPLOYEES

Unitech's family of employees consists of experienced, well motivated and dedicated team of engineers, technicians, sales executives and management staff.

This team is committed to serve our costumers, with the best solutions available in the market.



26

NATIONALITIES

are distributed among the 1658 employees

1658

EMPLOYEES

in 2018

BUSINESS SYNERGY

- Unitech's strategy continues to focus on accelerating its business throughout the region, to service the construction sector via superior products & solutions, backed up by a highly experienced people in the field. Unitech also aims to enhance its geographical presence in its areas of interest, and where opportunities exist.
- We combine a deep understanding of building and construction materials markets with a successful history of upgrading our products and developing our processes. We have the human skills, the know-how and the product to service major construction projects, medium sized to mega projects taking in care our positive contribution to our societies

WE THRIVE TOWARDS **EXCELLENCE** BY ACKNOWLEDGING:

- Customer Satisfaction
- Employees Retention
- Partner and Supplier Relations
- Positive Influence on Society and Environment



OUR DIVISIONS

Our divisions are dedicated specialized entities each focusing on the trading of specific segments, These divisions share a vast experience in their areas of expertise combined with skilled human assets of engineers and technicians

UNIMETAL

Unimetal is specialized in the sales of Construction steel products. It has a wide variety of MEP steel solutions, façade mechanical works, blockwork products, garbage and linen chutes, and several other steel items.

BETA CONTECH

Betacontech is engaged in the trading and installation of several advanced architectural and industrial products; raised flooring, impact protection systems, expansion joint covers, lockers and partitions, and many other advanced products for the construction industry.

UNIPRO

Unipro is focused on the sales of specialized building products. Through its versatile range of products that suits the various needs of medium to large scale projects, Unipro provides quality products from internationally well-known manufacturers; concrete work supplies, insulation and protection materials, waterproofing products, non metallic cable management systems and several other products.



MANUFACTURING ARM - SFSP

- SFSP is a leading manufacturer and fabricator of steel construction products in the region, servicing the construction sector through its state of the art facilities which are spread all over the region
- Products of SFSP are manufactured from quality raw material according to the relevant international standards to meet the requirements of MEP, façade, blockwork and waste management projects



COMMITMENT **TO** QUALITY

Our commitment to quality is clearly revealed in the way we do our business; our processes, our close interaction with our clients as well as the strict product inspection procedures.

To achieve this, we have implemented quality systems and processes that are continually being improved to satisfy our customers' erupting needs.

PRODUCT DEVELOPMENT

Product development process is substantial to the success of our business. We leverage all resources to provide up-to-date reliable products, environmentally friendly, durable to withstand the toughest weather conditions.

Our engineers are constantly testing the products, seeking to present a combination of performance and quality for all our products.

VALUE CHAIN

- Our value chain starts up with the quality of the raw materials and never ends up in client satisfaction. Our business practices backed up by all the technologically essential business elements are supported by an efficient logistics, warehousing and delivery system that maintains a value supply of products.
- The value chain is integrated in our business module, giving us the strength and preserving a good reputation gained through the past 4 decades

ENGINEERING SPECIALTY

Our products development engineers integrate their vast knowledge to provide the perfect solution to projects within the required specifications and timeframe. The product development department maintains highly skilled calibers with a dedication towards efficient and reliable solutions even in the most complicated cases where delicacy and skillful approaches are indispensable.

DESIGN AND PRODUCT **SAFETY**

Our design and engineering office in Stuttgart ensures our products comply with relevant European and international standards of fabrication, taking into attention the safety factors which governs the public safety of projects.

SUSTAINABILITY AND RESPONSIBILITY

We are working hardly to reduce our environmental footprints while maintaining the high quality and safety standards. We have set our targets to become three times more efficient in the next 10 years.

Our responsibility towards our stakeholders is valued through our positive contributions towards our colleagues, our business partners and our communities as well.

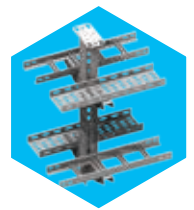
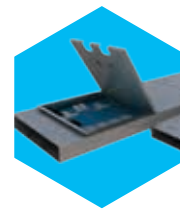
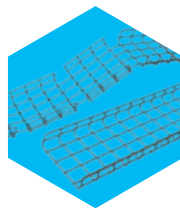
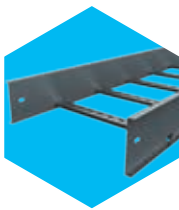


.1. MEP SOLUTIONS

- CABLE MANAGEMENT SYSTEMS
 - Cable Trays & Accessories
 - Cable Ladders (Welded & Swaged)
 - Basket Trays & Accessories
 - Cable Trunkings
 - Underfloor Trunkings
 - Cable Support Systems
- C CHANNEL STRUT SYSTEMS
- PIPE CLAMPS & HANGERS

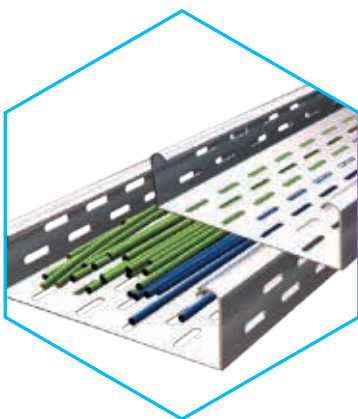
- CABLE MANAGEMENT SYSTEMS

Cable Management Systems are economical wire and cable management systems designed to meet most requirements of cable and electrical wire installations and comply to international standards of fabrication and finishing.



STANDARDS

- IEC 61537:2007
- BS EN 61537:2007
- NEMA VE 1 - 2009
- NEMA VE 2 - 2006
- NEC (ANSI / NFPA 70)



- Cable Trays & Accessories

Cable trays provide significant advantages in cable filling over other wiring methods, resulting in savings in the size or number of raceways required and reducing both material and labor costs

Material Thickness

1.0 mm | 1.20 mm | 1.50 mm | 2.00 mm

Side Heights:

50mm, 75mm, 100mm

Available Widths:

50, 100, 150, 200, 225, 300, 400, 450, 500, 600, 700, 800, 900, 1000 mm

Fittings: Bend 45°, Bend 90°, Intersection, Outside Riser Bend 45°, Inside Riser Bend 45°, Outside Riser Bend 90°, Inside Riser Bend 90°, Tee Branch, Reducer



- Cable Ladders

Rung Types (Swaged And Channel)

Material Thickness

1.50 mm, 2.00 mm, 2.50 mm

Swaged Type (Aluminum & Steel)

- Rounded tubular with 25 mm diameter
- Rung standard spacing 229 mm

Channel Type (Steel)

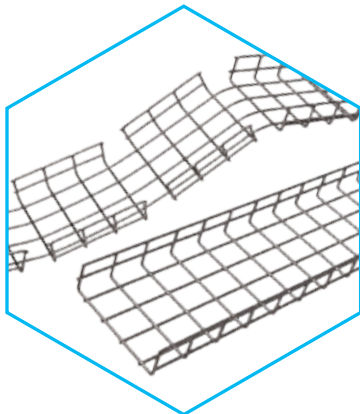
- Plain or slotted, and can be mounted upwards or downwards.
- Rung standard spacing 229 mm

Rail Types

- C-Type, Z-Type and R-Type

Side Heights: 150, 225, 300, 450, 600, 750, 900 mm

Fittings: Bend 45°, Bend 90°, Tee Branch, Horizontal Cross (Intersection), Inside Vertical Elbow (Inside Riser), Outside Vertical Elbow (Outside Riser), Straight Central Reducers, Right Hand Reducers, Left Hand Reducers.



- Basket Trays & Accessories

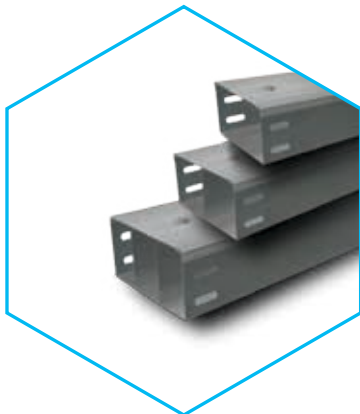
Basket Tray System enables fast and simple connections with limited need for tools. Its design allows continuous airflow, and prevents the buildup of dust, contaminants and bacterial proliferation.

Wire Ø: 4mm

Side Heights: 55mm, 80mm, 105mm, 150mm

Widths: 50, 100, 150, 200, 300, 400, 500, 600 mm

Fittings: 90° Bends, Outside Inside Bends, Vertical Inside Bends, Horizontal Tees (Cross), Reducers - Central Reducers, Left & Right Reducers



- Cable Trunkings

Cable Trunkings are used to protect cables from damage and dust and are square in shape. Our cable trunkings system comes in a variety of thickness and sizes and is available in three types: Single, double, and triple compartments.

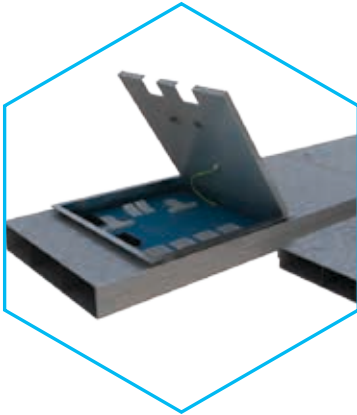
Available Thicknesses: 1 mm - 1.2 mm - 1.5 mm

Lengths: 2400 and 3000 mm

Fittings: Bend 45° Top Lid, Bend 45° Inside Lid, Bend 45° Outside Lid, Bend 90° Top Lid, Bend 90° Inside Lid, Bend 90° Outside Lid, TEE Bend Top Lid, TEE Bend Inside Lid, TEE Bend Outside Lid, Intersection, Reducers.

Dimensions:

50 x 50 mm	150 x 50 mm	300 x 100 mm
75 x 75 mm	150 x 75 mm	450 x 100 mm
100 x 50 mm	150 x 100 mm	600 x 100 mm
100 x 75 mm	150 x 150 mm	
100 x 100 mm	200 x 100 mm	



- Underfloor Trunkings

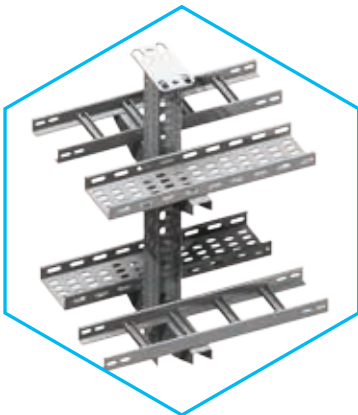
Underfloor Trunking Systems solutions incorporate a range of products for the distribution of power and data services, it is a coordinated set of containments that protect, segregate, contain, and route cables within a given environment.

Flush Floor Trunking System includes:

- Trunking
- End cap
- Junction box
- Coupler and leveling kit
- Fixing bracket and leveling for trunking
- Leveling for junction box
- Riser
- Floor box (support plate + lid and trim) Socket outlets and data sockets plates to be ordered separately

Screed Floor Trunking System includes:

- Ducting
- Coupler
- junction box
- Fixing bracket
- Vertical trunking such as DLP
- Riser
- Floor box (back-box + lid and trim) Socket outlets and data socket plates to be ordered separately



- Cable Support Systems

Cable Support Systems are well designed to provide necessary support for cable trays, cable ladders and trunkings. Cable supports are manufactured according to common standards from high quality raw materials.

- Cantilever Arm Bracket 41x21x2.5 mm
- Cantilever Arm Bracket 50x20x2.5 mm
- Cantilever Arm Bracket 50x25x2.5 mm
- Cantilever Arm Bracket 41x21x2.5 mm B2B
- Cantilever Arm Bracket 41x41x2.5 mm B2B
- Cantilever Arm Bracket 50x20x2.5 mm B2B
- Cantilever Arm Bracket 50x25x2.5 mm B2B

- U-Support with welded-on head plate
- I – Support U-Support with welded-on head plate
- U Support Wall Bracket
- I-Support Wall Bracket



- C CHANNEL STRUT SYSTEMS

C-channel metal framing is cold formed on modern rolling machines from low carbon steel manufactured according to BS 6946:1988. A continuous slot provides the ability to make attachments at any point.

Finishes: Pre-galvanized steel - Hot Dip Galvanized Steel - Stainless Steel

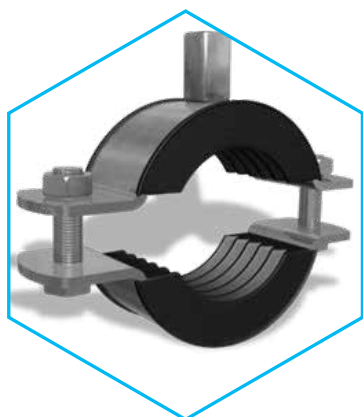
Thicknesses: 1.5, 2.0, 2.5 mm

Channel Dimensions		Thickness
Height "H"	Width "W"	
21.0 mm	41.0 mm	1.5 mm
41.0 mm	41.0 mm	1.5 mm
25.0 mm	50.0 mm	1.5 mm
21.0 mm	41.0 mm	2.0 mm
41.0 mm	41.0 mm	2.0 mm
25.0 mm	50.0 mm	2.0 mm
21.0 mm	41.0 mm	2.5 mm
41.0 mm	41.0 mm	2.5 mm
25.0 mm	50.0 mm	2.5 mm



Cantilever Arm Brackets - SCA

Cantilever Arm Bracket B2B - SCA



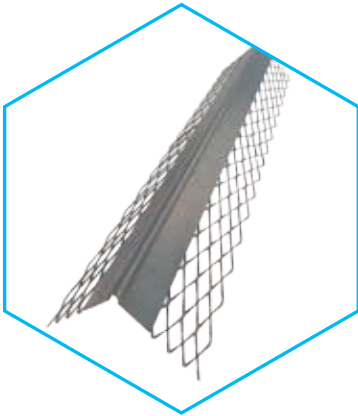
- PIPE CLAMPS & HANGERS

Pipe Clamps and Hangers are used in the support of pipes and equipment are manufactured according to the highest standards of fabrication. A diversified choice of Pipe Hangers, Pipe Clamps, EMT Straps, Omega Clamps, Beam Clamps, J and U-Bolts and Threaded Accessories.

Applicable Standards

- BS 3974
- ASTM F 708
- ANSI/MSS SP-58

.2. BLOCKWORK AND PLASTERING SOLUTIONS



- EXPANDED METALS, PLASTER BEADS

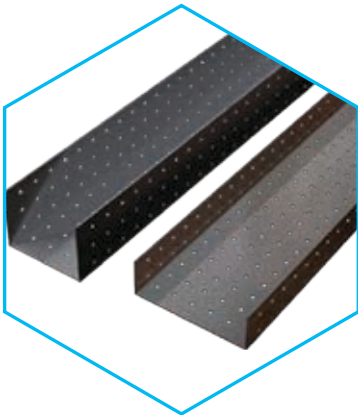
Expanded Metals help the formation of joints, protection of corners and resistance against cracks, chips and impact damage.

Relevant Standards:

- BS EN 13658 – 2
- ASTM C847
- BS EN 845-3:2003
- ASTM A 951/A 951M
- ASTM C1063

Products

- ANGLE BEAD
- PLASTER STOP BEAD
- MOVEMENT BEAD
- ARCHITRAVE BEAD
- METAL SHEET LATH
- RIB LATH
- BR MESH
- WALL TIES



- STEEL LINTELS

Standards:

- BS 5977: Part 2 :1983.
- BS EN 845-1:2003.
- BS EN 845-2:2003
- BS 845-3:2003
- ASTM A82 / ASTM A951 /
- DIN 488-1:2009-08

Steel lintels offers an economical, efficient and timely effective solution when compared to ordinary lintels. Steel lintels range have safe working loads ensure the most safe application for installers, taking into account the different loading arrangements.



- BLOCK LADDER REINFORCEMENTS

SFSP ladder and truss types are used for the reinforcement of brick and block masonry to give improved tensile strength to walls subjected to lateral loading e.g. wind and seismic.

Block reinforcements reduces the risk of cracking either at stress concentration around opening.



- BLOCK WORK ACCESSORIES

Manufactured as per BS EN 845-1

Frame cramps with a single 7mm diameter hole or an 8mm x 30mm vertical slot can be fixed to concrete, steelwork or masonry.

- Debonding Cavity Block Tie
- Dove Tails
- Adjustable Wall Ties
- Cavity Wall Ties
- Double Triangle Wall Ties
- Debonding Control Joints Flat Tie
- Hammer-On Section
- R2-Type Wire Tie
- Z- Type Wire Tie
- Butterfly Wall Tie
- Adjustable Head Restraint
- Partition Top Angle
- Partition Top Rod Anchors
- Sure - Tie for Steel

.3. FAÇADE WORK SOLUTIONS



- MARBLE & GRANITE MECHANICAL CLADDING SYSTEMS

Stangle Cladding Fixation includes design, calculation and production of several types of mechanical fixings and accessories used for cladding purposes. Stainless and galvanized steel are among the various materials used in the fabrication.

Standards:

- ASTM C1354 / C1354M – 09
- DIN 18 516
- DIN 18 800
- DIN 18 801

Material:

SS304, SS316, SS316L,
SS316TI, S235JR-MG,
S235JR-HDG

Brackets:

- L-Bracket (Standard & Serrated)
- L-Bracket (Standard & Serrated) Up Angle
- L-Bracket (Standard & Serrated) Down Angle
- L-Bracket (Standard & Serrated) Up and Down Angle
- Z-Bracket with Back Leg
- Omega Bracket
- Fishtail up & down
- Fishtail with Pin
- Load bearing and restraining corrugated stud.



- CONCRETE ANCHORING SYSTEMS AND ACCESSORIES

A range of concrete anchors of variable lengths and finishes with Low energy impact and power-saving assembly.

Material:

- Zinc Plated Steel.
- Stainless Steel [SS 304 (A2), SS 316 (A4)].

Anchors

- Expansion Joint Steel anchoring: Suitable for all screws or threaded bolts with metric thread, with Inside threaded anchor, allowing great flexibility.
- Drop in Anchor: Provides permanently fixed threaded socket in concrete at a low setting depth to reduce drilling time.
- Sleeve anchor: Provides optimum performance in most base material types and an effective force distribution in the drilled hole
- Through (Wedge) Anchor: Special design of the clip in stainless steel which ensures a safe hold in the hole. Torque controlled expansion.
- Shield Anchor: Force controlled expansion with flexibility inside threaded anchor. Pressed steel segment ensures consistent dimensional accuracy.



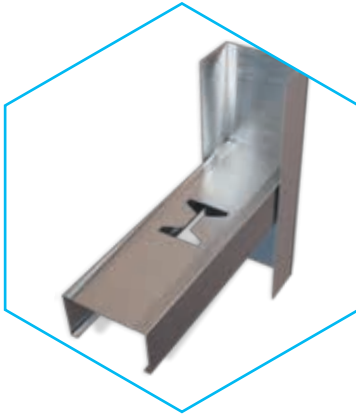
- METAL FRAMING SYSTEMS

Metal framing Floor to floor system using front to back channels with support plates provides a solution for a variety of brackets according to the cavity between the panel and the backwall

A complete system is available including channels, brackets, anchors, spring nuts, and concrete anchors

For higher cavities up to 300 mm, a metal framing system back support system for adjustable large cavities is used with support brackets

.4. PARTITIONING SOLUTIONS



- DRY WALL & CEILING PROFILES

Profiles for drywall and ceiling are manufactured in accordance with ASTM C1047 and ASTM-C645 requirements. They are made from:

Pre-galvanized steel complying with:

- BS 2989: steel grade Z2, zinc coating type G275.
- ASTM A653-G90
- DIN EN 10147

Types of Profiles:

For Drywall

Studs
Runners
Ceiling Channels
Omega Channels
Deflection Track
Shaft Wall Track

For Ceiling

Main Ceiling Channel
Furring channels
Wall Channels

.5. WASTE MANAGEMENT SOLUTIONS



- GARBAGE & LINEN CHUTES

Chutes are very convenient, simple and low cost method of controlling and disposing of refuse and linen.

SFSP Chutes meet the most stringent requirements of environmental health and safety. Chutes are used as original equipment in new buildings, such as: hotels, hospitals, high rises and residential towers.

Finishes: SS 304, SS 316, GI Galvanized Steel

SFSP provides the following material gauges:

- 1.5mm (16 Gauge)
- 2.0mm (14 Gauge)
- 3.0mm (11 Gauge)

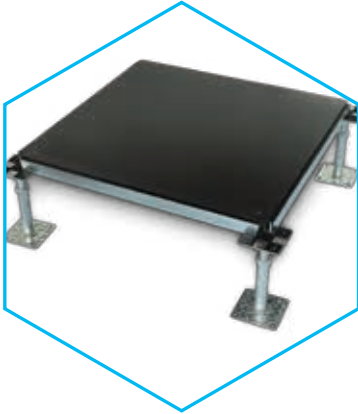
SFSP chutes are available with the following standard internal diameters:

500mm (20"), 550mm (22"), 600mm (24")
700mm (28"), 800mm (32"), 900mm (36")

System includes:

- Chute Tube
- Intake Throat
- Hopper Door
- Clamp Ring & Supporting Frame
- Access Door
- Elbow
- Fire Cut Off Door
- Control Panel
- Disinfecting & Sanitizing Unit
- Solenoid Valve
- Tube with Insect Screen & Exhaust Fan
- Cleaning System & Brushing Device
- Cleaning & Fire Sprinklers
- Garbage Container
- Compactor

.1. RAISED FLOORING



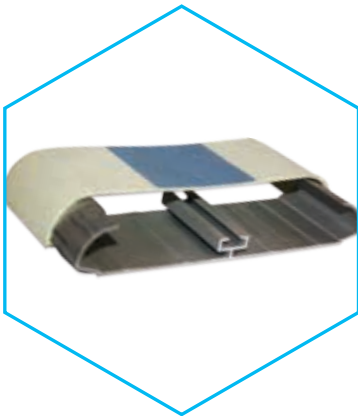
- RAISED ACCESS FLOORINGS

Beta floor raised access flooring provides a wide range of raised access floor panels and accessories including cementitious floor panels, calcium sulfate panels, wood core panels and aluminum access floor series. Our products are engineered and manufactured according to BS EN 12825 and DIN EN 13213 to suit multiple applications including computer rooms, general office environments, equipment rooms, control rooms, internet service provider rooms (ISP's), as well as several other specialized applications

Standard panel sizes: 600x600x35mm

A full range of under Structure systems are available including stringer and stringer-less pedestals of different heights, bolted stringers and several other components for the raised floor system.

.2. BUILDING IMPACT PROTECTION SYSTEMS

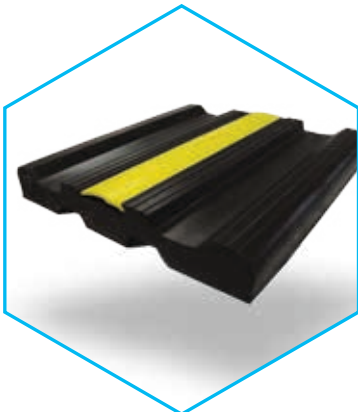


A- INTERNAL

- ARCHITECTURAL & INDUSTRIAL IMPACT PROTECTION SYSTEMS:

- Handrails: sculpted, flat and cylindrical profiles
- Wall Guards: flat and sculpted - Accent Rails
- Chair Rub Rails: flush and surface-mounted
- Corner Guards: flush and surface-mounted
- Vinyl Doors and Frame Guards

Material: vinyl, aluminum, wood, clear lexan and stainless steel



B- EXTERNAL

- SPEED BUMPS & BUMPER GUARDS

Speed Bumps and Bumper Guards are used extensively in commercial parking garages and building service areas for vehicular, human and parking safety. Their profiles are designed to maximize wall surface area protection and high impact absorption.

- HEAVY DUTY WALL AND CORNER GUARDS

Heavy duty wall and corner guards are provided to withstand heavy impacts in parking, logistics and industrial facilities.

Profiles are produced from EPDM Rubber, Natural Rubber, Styrene-Butadiene Rubber, Recycled Plastic, and Neoprene.

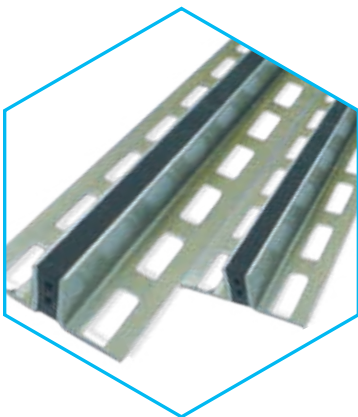
.3. ARCHITECTURAL EXPANSION JOINT SYSTEMS



Architectural joint covers for: Pedestrian Floors, Vehicular Floors, Interior and Exterior Walls, ceilings and Roofs, bituminous layers, concrete installation, coatings, sealants, large traffic loads, multi-dimensional movement. Our systems serve several applications, with different workloads. Profiles are a set of high quality material; extruded aluminum, synthetic rubber, EPDM and natural rubber, stainless steel or brass. Flexible high quality elastomeric insert.

- PEDESTRIAN FLOORS
- VEHICULAR FLOORS
- INTERIOR AND EXTERIOR WALLS
- CEILINGS AND ROOFS

.4. TECHNICAL PROFILES



Beta Contech offers a vast range of profiles produced from PVC, aluminum, brass and stainless steel to satisfy all sorts of requirements and uses in the laying/fixing of floors in tiles, wood, carpeting, linoleum, marble, laminated wood, melamine-coated wood, etc.

The profiles are suitable for various applications such as residential, commercial, hospitals, hotels, educational buildings, transportation facilities, and others

Besides being grained anti-slip or foot-strip depending on the profile and according to the model, our profiles adds elegantly refined touches in the various substrates of ceramics, marble, wooden, carpet and bare finish areas

- WALLS & FLOORS
- STAIR NOSING

.5. PARTITIONS AND LOCKERS



Beta Toilets from Beta Contech are manufactured and customized to meet the precise needs of simple to complicated projects with its top-notch finish, quality of material and within a timely delivery.

A complete solution with a wide selection of colors and textures are available. Our panels are manufactured from Black Phenolic covered with HPL panels to withstand harsh utilization conditions, while accessories come in a stainless steel finish; Gravity Hinges, Indicators Rosette, Lock set, Knob, Coat Hook, Pedestal leg, Tissue Holder.

- TOILET PARTITIONS
- LOCKERS

.1. CONCRETE WORK SUPPLIES



- CONCRETE ACCESSORIES

Formwork Accessories include tie rods, thru sleeves, base plates, wing nuts, anchor nuts, thru cones, water barriers, chamfers, and others.



- PVC WATERSTOPS

UNITECH Waterstop (a high grade flexible polyvinyl chloride waterstop) is designed for use in any concrete structure which contains joints and is subjected to a hydrostatic load on one face of the structure. It prevents water movement through concrete joints in water reservoirs, canals, dams, sewage treatment plants, bridges, stadiums, basements, floor slabs, parking garages and similar structures.



- HARDENED STEEL NAILS FOR CONCRETE

DON QUICHOTTE concrete nails is the leader in nail fixing, high hardness and flexibility. manufactured from special high carbon steel.



- ALUMINUM LEVELS

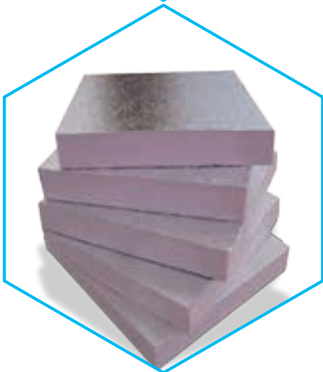
BMI stands for an innovative manufacturing technology of levels, designed for strenuous work. BMI ensures a long working period and high precision for your tasks apart from an appealing optical design. BMI worldwide patented manufacturing processes ensure constant and consistent top quality.

.2. INSULATION AND PROTECTION SOLUTIONS



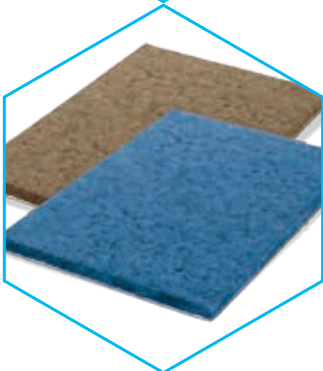
- GEOTEXTILES

A natural choice in designing, building and constructing works including roads and highways; ground, drainage and filtration systems; hydraulic works, waste disposal sites and water purifying plants.



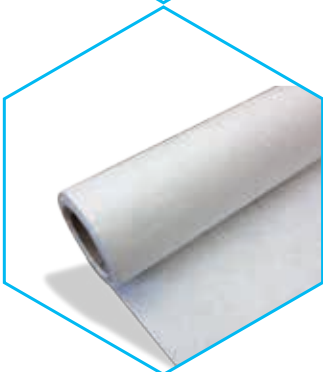
- EXTRUDED POLYSTYRENE THERMAL INSULATING BOARDS

Extruded Polystyrene rigid thermal insulation boards mainly used for insulating roofs, walls and floors from severe climate conditions. Insulation boards, manufactured according to ASTM C578, also help the prevention of ultraviolet rays from penetrating roofs, walls and floors.



- BITUMEN IMPREGNATED WOOD FIBER FILLERS & PROTECTION BOARDS

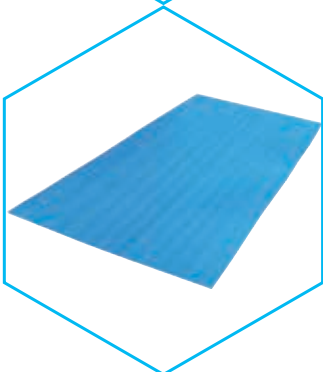
Bituboard is manufactured from highly resilient softwood fibers coated with bitumen. It is dry and clean, and cannot extrude any form of staining matter and it is resistant to moisture penetration and ice formation in the joint. It is immune to dry and wet rot, fungus and most forms of insect attack or similar forms of deterioration.



- POLYETHYLENE ROLLS

POLIANE Polyethylene Rolls.

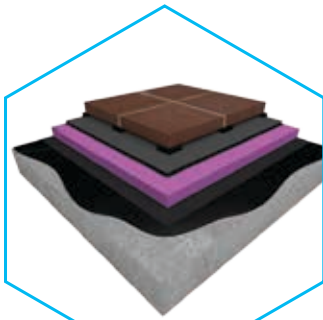
A blown polyethylene film resistant to alkalis, salts, acids and chemicals found in sub-soils; fully stable and waterproof. It is an anti-corrosive and weather resistant blown polyethylene film.



- POLYPROPYLENE PROTECTION BOARDS

Poly Board is a semi flexible polypropylene based board for waterproofing membrane protection. It is extremely strong in puncture and injury resistance. It differs from any other materials used to protect the waterproofing membrane as it enjoys flexibility which enables its use for tacking corners, protrusions, rounded surfaces, and also on uneven surfaces. Form lining boards for a smooth finish. It is not affected by minerals, oils, solvents, acids, bases and salts.

.3. WATERPROOFING SOLUTIONS



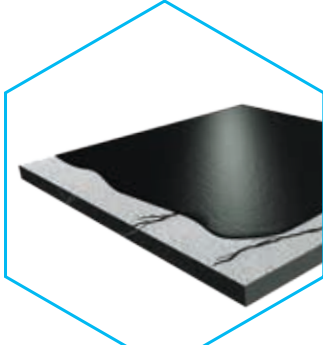
- FLUID-APPLIED WATERPROOFING MEMBRANES

Tremproof 250GC is a rapid-curing, high-solids, VOC compliant modified polyurethane waterproofing membrane. It can be applied to damp and green concrete.



- LIQUID-APPLIED POLYURETHANE WATERPROOFING MEMBRANES

Premium, liquid-applied, highly permanent elastic, cold applied and cold curing, one component polyurethane membrane used for long-lasting waterproofing. POLY TI is based on pure elastomeric hydrophobic polyurethane resins, which result in excellent mechanical, chemical, thermal UV stable and natural element resistance properties.



- ONE COMPONENT ALIPHATIC POLYURETHANE COATINGS

Single component moisture curing extended polyurethane liquid applied elastomeric membrane for waterproofing and protection of a wide range of surfaces.



- TWO-COMPONENT, CEMENTITIOUS MORTAR FOR WATERPROOFINGS

Mapelastic Smart is used to protect concrete structures, renders with hairline cracks and cementitious surfaces in general which, being subject to vibrations, may suffer from cracking, and for waterproofing hydraulic projects such as channels, faces of dams and swimming pools, basins, storage tanks, balconies and terraces. Particularly suitable for waterproofing irregular surfaces.



- BITUMEN MODIFIED MOISTURE CURING POLYURETHANE MEMBRANES

Tremproof 60 is an effective membrane for use on concrete, wood, metal and other masonry surfaces and also can be used as an accessory waterproofing system.

.4. MEP NON METALLIC SOLUTIONS



- UPVC ELECTRICAL CONDUITS AND TRUNKINGS

High impact UPVC conduits for protection and coating of electrical wires. Our electrical conduits and trunkings are available in a variety of sizes and fittings to suit most applications.



- CABLE TIES & NYLON PLUGS

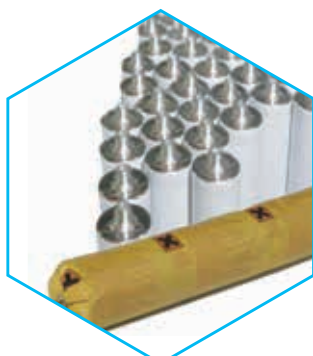
A complete range of cable ties & nylon plugs for all kinds of applications: cable ties for wiring and installation, identification cable ties, special cable ties, heat resistant cable ties, and a wide range of accessories for fixing cables and pipes on different kinds of materials. Elematic production conforms to European Standards, guarantees the application of severe quality parameters on all stages.



- HOTSHRINK TUBINGS

Thin wall heat shrinkable tubing in cross-linked polyolefin, self-extinguishing, flexible and strong, with chemical resistance and safety in the electrical insulation, suitable for general applications.

.5. SEALANTS, ADHESIVES & CHEMICALS



- ONE-PART POLYURETHANE SEALANTS

Poly TI is a high performance one-part polyurethane sealant elastomeric weather-resistant, non-sagging, and water tight with excellent adhesion properties designed for use in all types of joints, vertically and horizontally. Poly TI has a movement capability of $\pm 25\%$ of the joint width, making it ideal for joints.



- FIRE-STOPPING SYSTEMS

STI leads the industry in developing innovative fire protection systems that help stop the spread of fire, smoke and hot gases. STI products and systems offer innovative firestop solutions for all types of new construction and retrofit applications.



- TWO-PARTS POLYURETHANE SEALANTS (SELF LEVELING)

Dymeric 240 is a multi-component high performance epoxidised polyurethane sealant which provides a durable, weather tight seal in dynamically moving joints. THC-900 & THC-901 are multi-component, high performance joint sealants which on thorough mixing, provide trafficable, durable seals in dynamically moving joints.



- BACKING RODS

Extruded closed cell polyethylene foam which is both flexible and compressible. Backing Rods are designed as pre-molded joint fillers for expansion joints in civil engineering and building construction works of all types. They are also suitable for all types of cold applied sealants including silicones, polysulfides, acrylics, butyl rubbers, polyurethanes, general-purpose mastics, bitumen based sealants and putties.



- CONSTRUCTION SILICONE SEALANTS

Eagle seal is a prime one-part acetic moisture curing silicone sealant suitable for general construction sealing applications. Eagle seal acetoxysilicone is resistant to moisture. It has excellent resistance to aging, shrinkage, cracking and discoloring.



- GLUE FOR MARBLE & GRANITE

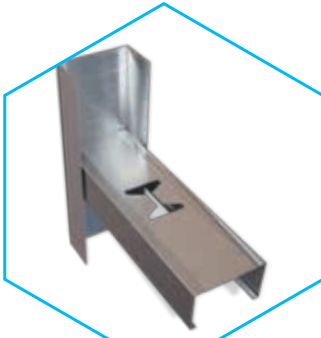
Eagle Mastic (2-components polyester) is a synthetic resin-based adhesive with a specific weight between 1.5 and 1.65 gram/cm³.



- TILE ADHESIVES & TILE GROUTS

Unifix 401 and 402 are premixed cement-based water resistant mortars for fixing ceramics and glass tiles on walls and floors, applied internally and externally on fair face concrete, bricks and blocks. UniGrout 201 is a cement-based, polymer-modified tile grout mortar, for filling grout joints of ceramic wall and floor tiles, porcelain tiles, and mosaic tiles, for walls, floors, showrooms and swimming pools. It is applied internally and externally and where heavy traffic is present.

.6. DECORATIVE AND PARTITIONING SOLUTIONS

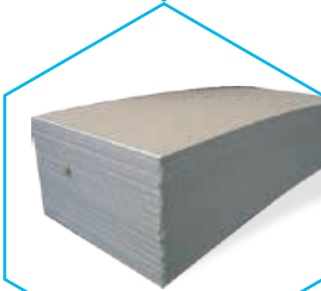


- STUDS & RUNNERS

Uni-Metal profiles for drywall and ceiling are manufactured in accordance with ASTM-C645 requirements. They are made from:

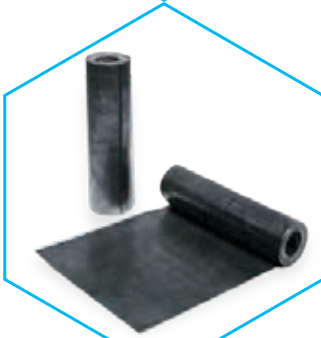
Pre-galvanized steel complying with:

- BS 2989: steel grade Z2, zinc coating type G275.
- ASTM A653-G90
- DIN EN 10147



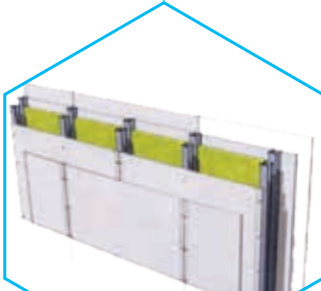
- GYPSUM BOARDS & ACCESSORIES

UNITECH Gypsum Boards are designed for wall and ceiling applications to meet most general construction needs. They are available in two different sizes. Gypsum boards have been manufactured to perform in accordance with ASTM C 36 and C 1396.



- RADIATION PROTECTION

UNITECH Lead Sheet is generally the most cost-effective radiation shielding material to protect against the effects of gamma rays and x-rays. The properties of lead shielding which make it an excellent shielding material are its density, high atomic number, high level of stability, ease of fabrication and high degree of flexibility in application. Lead Sheets are formed in accordance with ASTM B-29, B-749, BS EN 12588:2006.



- CEMENT BOARDS & ACCESSORIES

Fiber cement boards have taken the international market by storm. The strong portfolio of advantages make the product widely endorsed and appreciated by architects and customers worldwide; many of them are replacing plywood with fiber cement boards. Fiber cement boards have been used in some of the iconic buildings of our time as they save time, money and being aesthetically more beautiful in their appeal.



- DECORATIVE BOARDS

Decorative boards made from high density fiber cement board. The surface of the plate is coated with a set of protection materials including fluorine resin, UV single and multicolor coatings. The major coating materials have long service duration over different time spans. These boards can be used in the thermal insulation decoration of high-grade building's interior walls.

.7. HARDWARE AND TOOLS



- ELECTRICAL POWER TOOLS

AEG Electrical Power Tools comprise the following range: Hammers, drills, percussion drills and diamond drills, screwdrivers and battery tools, wall chasers, angle grinders and straight grinders, jig saws and circular saws and many more to address the most diverse applications in wood, metal, concrete and block.

AEG also has its own range of innovative, high-quality accessories designed to perfectly complement AEG power tools.



- ABRASIVE DISCS AND GRINDING WHEELS

Cutting and grinding discs made for universal use and various material cross sections of metal or steel and stone. They are suitable for sheet metals, profiles and general applications as well as stone.



- DIAMOND CUTTING BLADES

Komasi's durable, different applications' cutters used for granite, marble, natural stone and concrete products.



- PRESSURE WASHERS, CHAINSAWS

Pressure washers manufactured by Blackmax provides an easy and reliable use for the outdoor.

Lightweight, easy to handle chainsaws with the ultimate power and the required safety is offered with toolless top cover, chain break and a 35cm full complement bar and chain.



- CONCRETE CORING

B+BTEC introduce a complete line of drilling systems, anchoring and saws. These machines are entirely designed, manufactured and assembled in its production facilities in the Netherlands and packed with new quality features. The B+BTEC R&D Division has developed a wide range of Bonds (the metal in which the diamond crystals are sintered) that are engineered for optimal cutting performance and blade life in Concrete, Brick, Masonry and Porotherm Brick & Blocks and are specially designed for today's construction materials.



- STAINLESS STEEL CUTTING & DRILLING EQUIPMENT

Diamond3® is the premier manufacturer of Professional Equipment, Tools & Accessories for Tile, Stone, Sanitary Ware, Masonry, Concrete & Brick. Its product line includes: Stainless Steel Cutting Equipment, Drilling & Grinding Equipment, Specialty Diamond Blades, Diamond Drill (Core) Bits and Grinding Wheels.



- PROFESSIONAL HAND TOOLS & EQUIPMENT

IRWIN TOOLS manufactures and distributes professional grade hand tools and power tool accessories worldwide for trade professionals who demand superior performance and durability on the job. IRWIN TOOLS' brand portfolio features user-preferred category leaders such as IRWIN, Vise-Grip, Marathon, Quick-Grip, Speedbor, Strait-Line, Unibit, and Hanson.



- AIR COMPRESSORS, GENERATORS, BENDING & CUTTING MACHINES

Dynamik provide a complete range of Power generators, air compressors, bending and cutting machines.

IKK GROUP OF COMPANIES

The IKK Group is a major business institution serving the Arab World in the Industrial, Construction and Trading fields. After almost five decades in the business, the IKK Group has become one of the leading enterprises in the Region with focus on the Construction Industry in general.

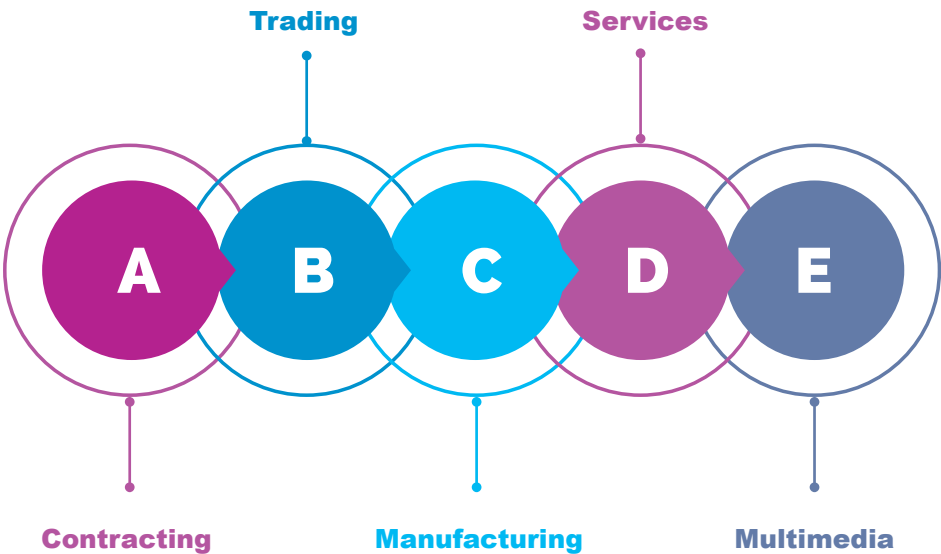
Today, the Group is a pioneer in waterproofing, weather proofing, building material supplies, construction steel products, manufacturing and the fabrication and sales of UPVC, CPVC and high density polyethylene pipes and fittings, as well as in the sales of sanitary products, accessories and many other items and technologies used in the industry. The Group is also represented in the Food, Decoration, and Multimedia business domains.



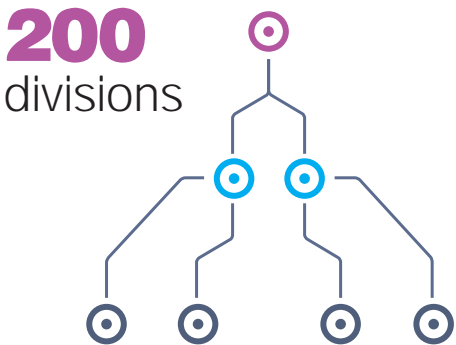
IKK Group of Companies
www.ikkgroup.com

GROUP
ACTIVITIES

The IKK Group is a diversified group in terms of products, services and geography



Composed of 60 companies, the IKK Group operates through 200 divisions, branches and outlets; it is spread over 13 countries, covering all major cities in the region and employing over 14,000 employees.



نبذة عن شركة يونيتك

تأسست شركة يونيتك عام ١٩٧٩ في جدة، المملكة العربية السعودية تجاوباً مع النهضة العمرانية والاقتصادية التي حدثت في المملكة في تلك الفترة الزمنية.

إعتمدت يونيتك منذ نشأتها خطة استراتيجية تمكّنها من التغلب على تحديات السوق من خلال تقديمها مجموعة متكاملة من حلول مواد البناء المتخصصة، ومن خلال توسع إنتشارها الجغرافي في مناطق الشرق الأوسط، أوروبا وشمال أفريقيا وعمدت الى تمييز منتجاتها من حيث النوعية والجودة.

نمت يونيتك مع الوقت لتصبح واحدة من أكبر الشركات التجارية في قطاع مواد البناء في المملكة العربية السعودية، ودولة الإمارات، ومعظم بلدان الشرق الأوسط. تُعتبر يونيتك اليوم شركة رائدة توفر الخدمات والمنتجات العالية الجودة، الأعمال المتميزة وكفاءة ومهارة الموارد البشرية، مع مطابقة عملياتها لأنظمة الجودة الإدارية والبيئية.

تقدم يونيتك مجموعة متميزة ومتخصصة من منتجات الحديد وغيرها من الأدوات المتخصصة كأدوات تثبيت الواجهات الميكانيكية، أدوات حوامل الكابلات، شبك اللياسة، الحوامل الميكانيكية للحجر والرخام، واكسسوارات البلوك. كما تبذل الشركة جهداً كبيراً لتعزيز مجموعة منتجاتها، ومن هنا قامت بإنشاء مصانع التخصصات للمنتجات الحديدية (SFSP) في عدد من بلدان المنطقة، هذه المصانع تقدم مجموعة واسعة من منتجات حوامل الكابلات، أنظمة تثبيت البلوك، الشبك المعدني للياسة، أنظمة تصريف النفايات وغيرها.

بالإضافة الى شهادة ادارة الجودة 2015: 9001، اكتسبت مصانع الشركة شهادة نظام ادارة الجودة البيئية أيزو 14001 وأصبحت معتمدة لـ ISO 14001: 2004 في إدارة البيئة، وOHSAS 18001: 2007 في الإدارة المهنية وإدارة الصحة والسلامة، فضلاً عن عضوية يونيتك في المجلس الأمريكي للمباني الخضراء والتي تعبر عن توجه شركة يونيتك كشركة تعنى بالجودة والمحافظة على البيئة.

الرؤية والمهمة

الرؤية

الارتقاء بالشركة كي تكون الخيار الأول لعملائنا

المهمة

- بأن نكون الشركة الرائدة في نطاق أعمال البناء والتشييد من خلال:
- توفير خدمات مميزة من خلال فريق مبيعات ملم ومتحمس
- تعزيز ثقافة الشركة عبر توحيد القيم والأهداف
- تقديم مجموعة مبتكرة من المنتجات لإرضاء العملاء
- جذب المواهب واستقطاب الخبرات وتنميتها والحفاظ عليها

نبذة عن المجموعة

تأسست مجموعة شركات عصام خيرى قباني عام ١٩٦٩ بعد افتتاح مصنع نيبرو لصناعة أنابيب البولي فينيل كلورايد والذي يعتبر اليوم من أهم مصانع صناعة الأنابيب في الشرق الأوسط، مع حجم إنتاج سنوي يصل لأكثر من ٣٥٠٠٠٠ ألف طن.

مجموعة شركات عصام خيرى قباني هي مجموعة متنوعة من حيث المنتجات والخدمات في عدة قطاعات ومنها التجارة، الصناعة والمقاولات. تتألف المجموعة من ٦٠ شركة مستقلة، وتضم حوالي ٢٠٠ فرع وصالة عرض منتشرة في ١٢ بلد لتغطي أهم المدن في المنطقة، كما يبلغ عدد الموظفين في المجموعة حوالي ١٤,٠٠٠ (إناث وذكور) في كافة المناصب.

إن رؤية مجموعة شركات عصام خيرى قباني هي واضحة وهي تسعى لأن تكون المجموعة الرائدة والمنتظمة ذات الاعمال التجارية المتنوعة لتخدم العالم العربي في القطاع الصناعي، وقطاع البناء، والميدان التجاري المتخصص في خدمات الصيانة وإدارة المشاريع. وتهدف المجموعة الى التوسع بمعدل ١٥ - ٢٠ % سنويا. وتصنف المجموعة من بين أكبر المجموعات المتخصصة في الشرق الأوسط.

إن مهمتنا هي تزويد العالم العربي بالخدمات الموثوقة في مجموعة متنوعة من القطاعات المتخصصة والمنتجات الحيوية والمساهمة في توفير فرص العمل لآلاف الموظفين، هذا بالإضافة الى توفير فرص التدريب لمئات من الشباب العربي والخريجين في القطاعات التقنية والهندسية. ان مجموعة أعمالنا وفلسفتنا الأساسية تتم وفقا للاهداف التالية: توظيف وتدريب وراتب ومعاملة جيدة.



UNITECH OFFICIAL REGISTRATION

All Products Manufactured by SFSP are Solely Distributed by SFSP Sister Companies in the Following Countries

KSA

Isam Kabbani & Partners for
Building and Construction
Materials Co. Ltd.

شركة عصام قباني وشركاه لمواد الإنشاء والتعمير
المحدودة

BAHRAIN

Isam Kabbani Trading Est.

مؤسسة عصام قباني التجارية

UAE

Isam Kabbani Trading Est.

مؤسسة عصام قباني للتجارة

EGYPT

UNITECH Egypt for Building
Materials

شركة يونيتك مصر لمواد البناء

OMAN

Isam Kabbani & Partners
For Trading L.L.C.

شركة عصام قباني وشركاه للتجارة ش.م.م

KUWAIT

Hassan Kabbani Est. for General
Construction of Buildings

مؤسسة حسان قباني للمقاولات العامة للمباني

JORDAN

Jordan Build Co. For Construction
& Electrical Materials

شركة بناء الأردن لمواد الإنشاء والتعمير والكهرباء

LEBANON

UNITECH ME s.a.r.l

شركة يونيتك ميدل إيست ش.م.م

مصنع التخصصات للمنتجات الحديدية

هو الذراع التصنيعي ليونيتك في المملكة العربية السعودية، الإمارات العربية المتحدة، مصر ولبنان وتقوم مهمته على دعم الجهود التي تبذلها يونيتك في تعزيز التنوع في المنتجات الحديدية في السوق.

يونيمتل - UNI-METAL

تختص يونيمتل في مجال تجارة المواد الحديدية للبناء والإنشاءات، وتقوم بتسويق المنتجات الحديدية التي تصنع في مصانع التخصصات للمنتجات الحديدية ومصانع سيغما للمنتجات الحديدية في المملكة العربية السعودية، الإمارات العربية المتحدة، مصر ولبنان.

- حوامل الكابلات ومستلزماتها
- نظام سي تشانل ومستلزماته
- حوامل الأنابيب والمواسير
- التثبيت الميكانيكي للحجر والرخام
- دعائم النوافذ والأبواب واكسسوارات حوائط البلوك
- اكسسوار أعمال الياصة
- قواطع ألواح الجبس

الشركة الوطنية المتخصصة

للتقنية العمرانية - BETA CONTECH

تؤمن الشركة مهندسين محترفين ومتخصصين في تسويق وتوفير حلول متطورة لقطاع البناء. ومن الاصناف التي تقوم الشركة بتسويقها :

- الأرضيات المستعالية
- أغطية فواصل التمدد
- بروفيل حماية الجدران والزوايا
- الحماية المطاطية للصدمات
- أنظمة الامان لمواقف السيارات
- أنظمة تصريف النفايات والغسيل

يونيبرو - UNIPRO

تقدم يونيبرو حلولاً متعددة لمواد البناء المتخصصة من خلال باقة من المواد التي تتفرع من مواد العزل ولوازم الحماية الى أنظمة حوامل الكابلات البلاستيكية وصولاً الى مواد التثبيتات الخرسانية والعديد من المواد المتخصصة.



CONTACTS

KINGDOM OF SAUDI ARABIA

unitech.ksa@ikkgroup.com

Jeddah

Tel : +966 12 627 8222
Fax: +966 12 627 8722

Jeddah - Ghurab Showroom

Tel : +966 12 667 2000
Fax: +966 12 661 4306

Mak kah / Taif

Tel : +966 12 541 1206
Fax: +966 12 532 1675

Mad inah

Tel : +966 14 842 1095
Fax: +966 14 842 1090

Yanbu

Tel : +966 14 390 1499
Fax: +966 14 322 7101

Khamis Mushayt

Tel : +966 17 237 5929
Fax: +966 17 237 8783

Najran

Tel : +966 17 546 3873
Fax : +966 17 546 3873

Al -Baha

Tel : +966 17 237 5929
Fax: +966 17 237 8783

Sharorah

Tel : +966 17 532 8153
Fax: +966 17 532 8153

Gizan

Tel : +966 17 321 6660
Fax: +966 17 321 0665

Riyadh North

Tel : +966 11 415 5465
Fax: +966 11 456 6627

Riyadh South

Tel : +966 11 448 0112
Fax: +966 11 447 7421

Riyadh - West

Tel : +966 11 431 6271
Fax: +966 11 431 7642

Riyadh East

Tel : +966 11 448 0112
Fax: +966 11 447 7421

Qassim / Buraidah

Tel : +966 16 382 3946
Fax: +966 16 385 2186

Hail

Tel : +966 16 543 3931
Fax: +966 16 543 3935

Skakah / Qurayyat

Tel : +966 14 626 3904
Fax: +966 14 626 3905

Tabuk

Tel : +966 14 423 5203
Fax: +966 14 423 5203

Hafr el Batin

Tel : +966 13 729 3644
Fax: +966 13 729 3644

Dammam

Tel : +966 13 859 0097
Fax: +966 13 857 8177

Hufuf / Showroom

Tel : +966 13 586 9732
Fax: +966 13 530 7144

ENGINEERING, DESIGN, MARKETING & MULTIMEDIA,

Unitech Deutschland GmbH

GERMANY

unitech.germany@ikkgroup.com

Stuttgart

Tel : +49 711 6868 7222
Fax: +49 711 6868 7223

Multi-D s.a.r.l

LEBANON

multi-d@ikkgroup.com

Multi-D Beirut

Tel : +961 1 841 155
Fax: +961 1 841 156

BAHRAIN

unitech.bahrain@ikkgroup.com

Manama

Tel : +973 17 874 897
Fax: +973 17 789 470

KUWAIT

unitech.kuwait@ikkgroup.com

Kuwait City

Tel : +965 2 4924 937
Fax: +965 2 4924 938

UNITED ARAB EMIRATES

Dubai - Al Rashidiyah

unitech.dubai@ikkgroup.com
Tel : +971 4 2591 773
Fax : +971 4 2591 774

Abu Dhabi - Musaffah

unitech.auh@ikkgroup.com
Tel: +971 2 552 3393
Fax: +971 2 552 5499

LEBANON

unitech.lebanon@ikkgroup.com

Beirut

Tel : +961 1 858 277
Fax: +961 1 858 276

OMAN

unitech.oman@ikkgroup.com

Muscat

Tel : +968 24 591 006
Fax : +968 24 597 006

JORDAN

unitech.jordan@ikkgroup.com

Amman

Tel : +962 6 556 3030
Fax: +962 6 554 7911

Aqaba

Tel : +962 6 556 3030
Fax: +962 6 554 7911

EGYPT

unitech.egypt@ikkgroup.com

Cairo 6th of October City

Tel : +20 2 3820 6477
Fax: +20 2 3820 6036

FACTORIES

SFSP - KSA

sfsp.jeddah@ikkgroup.com

Specialized Factory for Steel
Products -

3rd Industrial City / Jeddah

Tel: +966 12 637 4482
Fax: +966 12 636 1963

SFSP / UAE

sfsp.uae@ikkgroup.com

SIGMA Factory for Steel
Products

DIC (Dubai Industrial City)

Tel : +971 4 818 1919

SFSP / EGYPT

sfsp.cairo@ikkgroup.com

Specialized Factory for Steel
Products

6th of October City Giza

Tel : +20 2 3820 6477
Fax: +20 2 3820 6036

SFSP / LEBANON

sfsp.lebanon@ikkgroup.com

Specialized Factory for Steel
Products / s.a.r.l

Tanayel, Bekaa

Tel: +961 8 514 290
Fax: +961 8 514 291





www.unitech-ikk.com
www.sfsp-ikk.com
www.ikkgroup.com

يونيتك

